

IH 794: LINCOLN AVE TO LINCOLN MEMORIAL DR (MILWAUKEE COUNTY) CONTINUOUS (24 HOUR) CLOSURE NO DIVERSION ROUTE (MAX QUEUE METHOD)	AUGUST
	Analyzed for 2009 Construction Season

SUMMARY OF TRAFFIC MODEL OUTPUT

SUNDAY WESTBOUND DIRECTION

TIME OF DAY	FLOWS AND CAPACITY IN VEH/HR						AVERAGE SPEEDS IN MPH			
	MAIN ROUTE		SITE CAPA CITY	FLOW		AV.DEL PER VEH (MINS)	AVERAGE QUEUE (VEH)	MAIN ROUTE		SITE
	DEMAND FLOW	PCT HEAVY		MAIN ROUTE	'DIVER TED'			WITHOUT WORK ZONE	WITH WORK ZONE	
MID-1 AM	247	0.0	3000	247	0	0.36	0	70.2	58.0	49.7
1-2 AM	146	0.0	3000	146	0	0.36	0	70.2	58.0	49.7
2-3 AM	121	0.0	3000	121	0	0.36	0	70.2	58.0	49.7
3-4 AM	69	0.0	3000	69	0	0.36	0	70.2	58.0	49.7
4-5 AM	68	0.0	3000	68	0	0.36	0	70.2	58.0	49.7
5-6 AM	154	0.0	3000	154	0	0.36	0	70.2	58.0	49.7
6-7 AM	258	0.0	3000	258	0	0.36	0	70.2	58.0	49.7
7-8 AM	331	0.0	3000	331	0	0.36	0	70.2	58.0	49.7
8-9 AM	482	0.0	3000	482	0	0.36	0	70.1	58.0	49.7
9-10 AM	710	0.0	3000	710	0	0.36	0	69.9	57.9	49.7
10-11 AM	894	0.0	3000	894	0	0.35	0	69.6	57.8	49.7
11AM-NOON	1012	0.0	3000	1012	0	0.35	0	69.5	57.8	49.7
NOON-1PM	1166	0.0	3000	1166	0	0.35	0	69.3	57.7	49.7
1-2 PM	985	0.0	3000	985	0	0.35	0	69.5	57.8	49.7
2-3 PM	987	0.0	3000	987	0	0.35	0	69.5	57.8	49.7
3-4 PM	881	0.0	3000	881	0	0.35	0	69.6	57.8	49.7
4-5 PM	823	0.0	3000	823	0	0.35	0	69.7	57.8	49.7
5-6 PM	768	0.0	3000	768	0	0.35	0	69.8	57.9	49.7
6-7 PM	817	0.0	3000	817	0	0.35	0	69.7	57.8	49.7
7-8 PM	603	0.0	3000	603	0	0.36	0	70.0	57.9	49.7
8-9 PM	508	0.0	3000	508	0	0.36	0	70.1	57.9	49.7
9-10 PM	455	0.0	3000	455	0	0.36	0	70.2	58.0	49.7
10-11 PM	365	0.0	3000	365	0	0.36	0	70.2	58.0	49.7
11PM-MID	200	0.0	3000	200	0	0.36	0	70.2	58.0	49.7

----- SITE BREAKDOWN DELAYS -----

BREAKDOWN DURATION (MINS)	0
RANGE OF QUEUE DELAY - MIN (VEH-H) MAX	0.0
AV BREAKDOWNS PER DAY	0.00
AV QUEUE DELAY/DAY (VEH-H)	0.0
AV TOTAL DELAY/DAY (VEH-H)	0.0

----- SITE ACCIDENT DELAYS -----

BREAKDOWN DURATION (MINS)	0
RANGE OF QUEUE DELAY - MIN (VEH-H) MAX	0
AV BREAKDOWNS PER DAY	0
AV QUEUE DELAY/DAY (VEH-H)	0
AV TOTAL DELAY/DAY (VEH-H)	0

AVERAGE ACCIDENT NUMBERS (PIA/DAY)

MAIN ROUTE WITHOUT WORKS	0.0042
MAIN ROUTE WITH WORKS	0.0033
'DIVERSION'	0.0000

PIA: Personal Injury Accidents

IMPACTS ON ROAD USERS

ROAD USER COSTS PER DAY	\$1,127
CONGESTED HOURS PER DAY*	0

*Delays Exceeding User-Specified Maximum

IH 794: LINCOLN AVE TO LINCOLN MEMORIAL DR (MILWAUKEE COUNTY)
CONTINUOUS (24 HOUR) CLOSURE
NO DIVERSION ROUTE (MAX QUEUE METHOD)

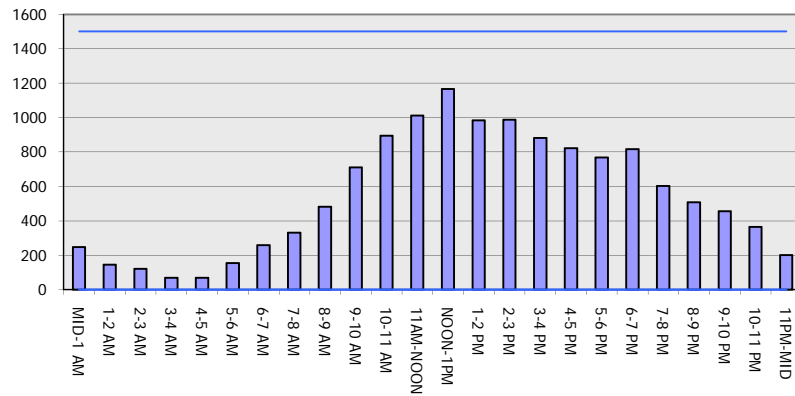
AUGUST

Analyzed for 2009
 Construction Season

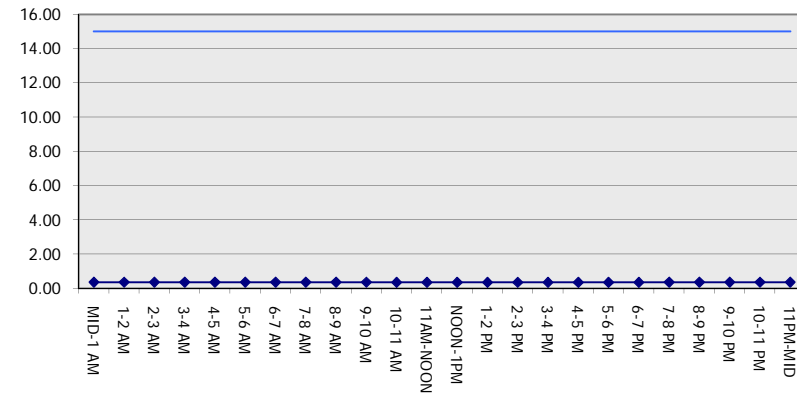
GRAPHICAL REPRESENTATION OF TRAFFIC MODEL INPUT AND OUTPUT

SUNDAY WESTBOUND DIRECTION

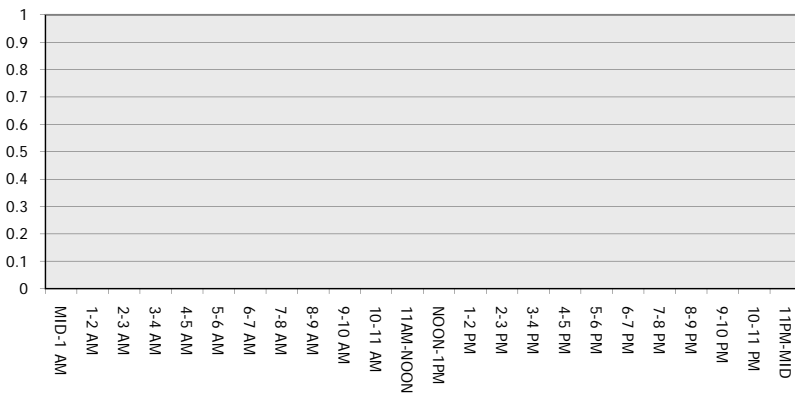
Main Route - Traffic Demand (Vehicles Per Hour)



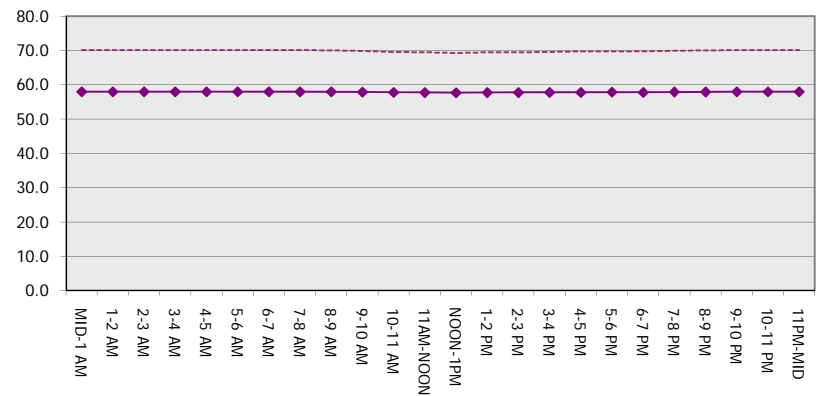
Main Route Average Delay Per Vehicle (Minutes)



Main Route - Average Queue Length (Vehicles)



Main Route - Average Speed (MPH)



IH 794: LINCOLN AVE TO LINCOLN MEMORIAL DR (MILWAUKEE COUNTY) CONTINUOUS (24 HOUR) CLOSURE NO DIVERSION ROUTE (MAX QUEUE METHOD)	AUGUST
	Analyzed for 2009 Construction Season

SUMMARY OF TRAFFIC MODEL OUTPUT

SUNDAY EASTBOUND DIRECTION

TIME OF DAY	FLOWS AND CAPACITY IN VEH/HR							AVERAGE SPEEDS IN MPH		
	MAIN ROUTE		SITE CAPA CITY	FLOW		AV.DEL PER VEH (MINS)	AVERAGE QUEUE (VEH)	MAIN ROUTE		SITE
	DEMAND FLOW	PCT HEAVY		MAIN ROUTE	'DIVER TED'			WITHOUT WORK ZONE	WITH WORK ZONE	
MID-1 AM	592	0.0	3000	592	0	0.36	0	70.0	57.9	49.7
1-2 AM	319	0.0	3000	319	0	0.36	0	70.2	58.0	49.7
2-3 AM	302	0.0	3000	302	0	0.36	0	70.2	58.0	49.7
3-4 AM	148	0.0	3000	148	0	0.36	0	70.2	58.0	49.7
4-5 AM	112	0.0	3000	112	0	0.36	0	70.2	58.0	49.7
5-6 AM	133	0.0	3000	133	0	0.36	0	70.2	58.0	49.7
6-7 AM	198	0.0	3000	198	0	0.36	0	70.2	58.0	49.7
7-8 AM	232	0.0	3000	232	0	0.36	0	70.2	58.0	49.7
8-9 AM	272	0.0	3000	272	0	0.36	0	70.2	58.0	49.7
9-10 AM	440	0.0	3000	440	0	0.36	0	70.2	58.0	49.7
10-11 AM	613	0.0	3000	613	0	0.36	0	70.0	57.9	49.7
11AM-NOON	790	0.0	3000	790	0	0.35	0	69.7	57.9	49.7
NOON-1PM	928	0.0	3000	928	0	0.35	0	69.6	57.8	49.7
1-2 PM	965	0.0	3000	965	0	0.35	0	69.6	57.8	49.7
2-3 PM	1019	0.0	3000	1019	0	0.35	0	69.5	57.8	49.7
3-4 PM	1097	0.0	3000	1097	0	0.35	0	69.4	57.7	49.7
4-5 PM	1102	0.0	3000	1102	0	0.35	0	69.4	57.7	49.7
5-6 PM	981	0.0	3000	981	0	0.35	0	69.5	57.8	49.7
6-7 PM	905	0.0	3000	905	0	0.35	0	69.6	57.8	49.7
7-8 PM	745	0.0	3000	745	0	0.35	0	69.8	57.9	49.7
8-9 PM	702	0.0	3000	702	0	0.36	0	69.9	57.9	49.7
9-10 PM	629	0.0	3000	629	0	0.36	0	69.9	57.9	49.7
10-11 PM	524	0.0	3000	524	0	0.36	0	70.1	57.9	49.7
11PM-MID	335	0.0	3000	335	0	0.36	0	70.2	58.0	49.7

----- SITE BREAKDOWN DELAYS -----	
BREAKDOWN DURATION (MINS)	0
RANGE OF QUEUE DELAY - MIN (VEH-H) MAX	0.0
AV BREAKDOWNS PER DAY	0.00
AV QUEUE DELAY/DAY (VEH-H)	0.0
AV TOTAL DELAY/DAY (VEH-H)	0.0

----- SITE ACCIDENT DELAYS -----	
BREAKDOWN DURATION (MINS)	0
RANGE OF QUEUE DELAY - MIN (VEH-H) MAX	0
AV BREAKDOWNS PER DAY	0
AV QUEUE DELAY/DAY (VEH-H)	0
AV TOTAL DELAY/DAY (VEH-H)	0

AVERAGE ACCIDENT NUMBERS (PIA/DAY)	
MAIN ROUTE WITHOUT WORKS	0.0045
MAIN ROUTE WITH WORKS	0.0036
'DIVERSION'	0.0000

PIA: Personal Injury Accidents

ECONOMIC IMPACT ON ROAD USERS	
ROAD USER COSTS PER DAY	\$1,218
CONGESTED HOURS PER DAY*	0

*Delays Exceeding User-Specified Maximum

IH 794: LINCOLN AVE TO LINCOLN MEMORIAL DR (MILWAUKEE COUNTY)
CONTINUOUS (24 HOUR) CLOSURE
NO DIVERSION ROUTE (MAX QUEUE METHOD)

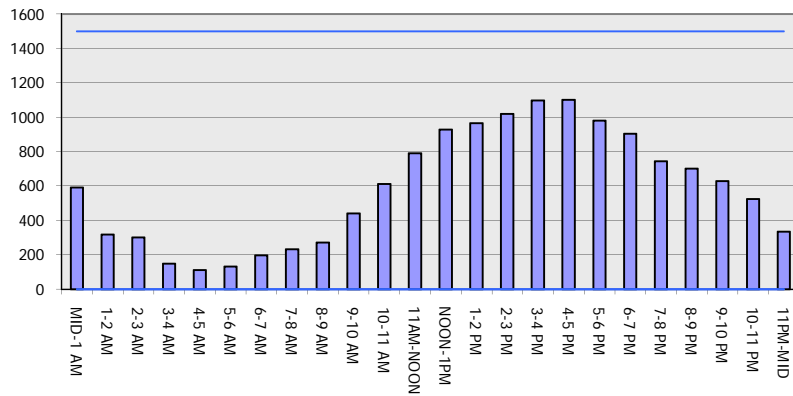
AUGUST

Analyzed for 2009
 Construction Season

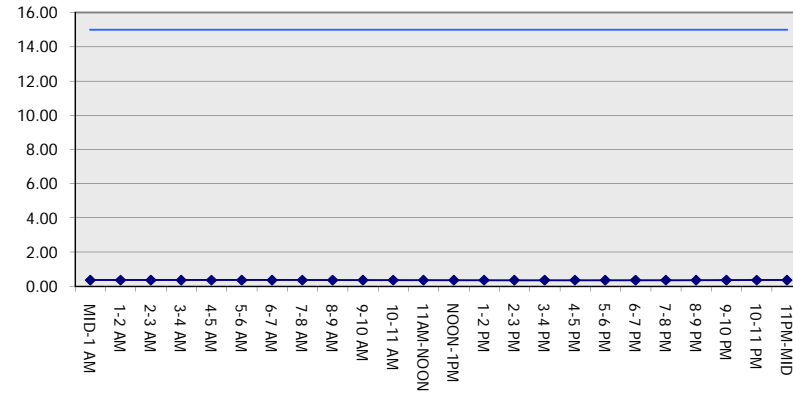
GRAPHICAL REPRESENTATION OF TRAFFIC MODEL INPUT AND OUTPUT

SUNDAY EASTBOUND DIRECTION

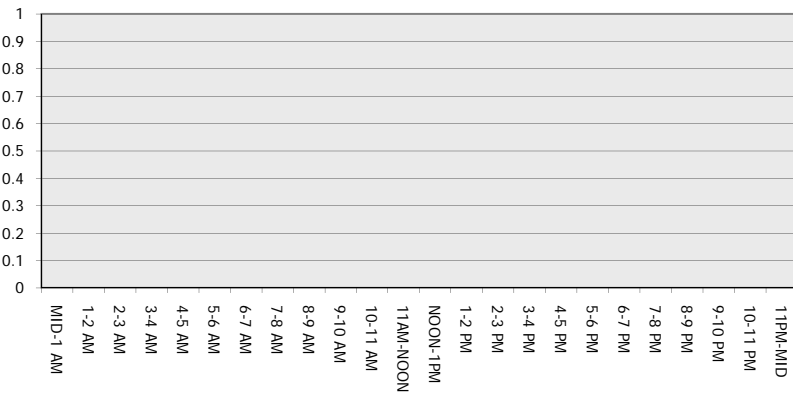
Main Route - Traffic Demand (Vehicles Per Hour)



Main Route Average Delay Per Vehicle (Minutes)



Main Route - Average Queue Length (Vehicles)



Main Route - Average Speed (MPH)

