

<b>IH 794: LINCOLN AVE TO LINCOLN MEMORIAL DR (MILWAUKEE COUNTY)</b> <b>CONTINUOUS (24 HOUR) CLOSURE</b> <b>NO DIVERSION ROUTE (MAX QUEUE METHOD)</b>	<b>AUGUST</b>
	Analyzed for 2009 Construction Season

**SUMMARY OF TRAFFIC MODEL OUTPUT**

SATURDAY WESTBOUND DIRECTION

TIME OF DAY	FLOWS AND CAPACITY IN VEH/HR						AVERAGE SPEEDS IN MPH			
	MAIN ROUTE		SITE CAPA CITY	FLOW		AV.DEL PER VEH (MINS)	AVERAGE QUEUE (VEH)	MAIN ROUTE		SITE
	DEMAND FLOW	PCT HEAVY		MAIN ROUTE	'DIVER TED'			WITHOUT WORK ZONE	WITH WORK ZONE	
MID-1 AM	287	0.0	3000	287	0	0.36	0	70.2	58.0	49.7
1-2 AM	163	0.0	3000	163	0	0.36	0	70.2	58.0	49.7
2-3 AM	153	0.0	3000	153	0	0.36	0	70.2	58.0	49.7
3-4 AM	108	0.0	3000	108	0	0.36	0	70.2	58.0	49.7
4-5 AM	133	0.0	3000	133	0	0.36	0	70.2	58.0	49.7
5-6 AM	277	0.0	3000	277	0	0.36	0	70.2	58.0	49.7
6-7 AM	480	0.0	3000	480	0	0.36	0	70.1	58.0	49.7
7-8 AM	645	0.0	3000	645	0	0.36	0	69.9	57.9	49.7
8-9 AM	840	0.0	3000	840	0	0.35	0	69.7	57.8	49.7
9-10 AM	948	0.0	3000	948	0	0.35	0	69.6	57.8	49.7
10-11 AM	1049	0.0	3000	1049	0	0.35	0	69.4	57.8	49.7
11AM-NOON	1133	0.0	3000	1133	0	0.35	0	69.3	57.7	49.7
NOON-1PM	1125	0.0	3000	1125	0	0.35	0	69.4	57.7	49.7
1-2 PM	1067	0.0	3000	1067	0	0.35	0	69.4	57.8	49.7
2-3 PM	1102	0.0	3000	1102	0	0.35	0	69.4	57.7	49.7
3-4 PM	1053	0.0	3000	1053	0	0.35	0	69.4	57.8	49.7
4-5 PM	984	0.0	3000	984	0	0.35	0	69.5	57.8	49.7
5-6 PM	963	0.0	3000	963	0	0.35	0	69.6	57.8	49.7
6-7 PM	930	0.0	3000	930	0	0.35	0	69.6	57.8	49.7
7-8 PM	806	0.0	3000	806	0	0.35	0	69.7	57.8	49.7
8-9 PM	630	0.0	3000	630	0	0.36	0	69.9	57.9	49.7
9-10 PM	569	0.0	3000	569	0	0.36	0	70.0	57.9	49.7
10-11 PM	516	0.0	3000	516	0	0.36	0	70.1	57.9	49.7
11PM-MID	386	0.0	3000	386	0	0.36	0	70.2	58.0	49.7

**\*----- SITE BREAKDOWN DELAYS -----\***

BREAKDOWN DURATION (MINS)	0
RANGE OF QUEUE DELAY - MIN (VEH-H) MAX	0.0
AV BREAKDOWNS PER DAY	0.00
AV QUEUE DELAY/DAY (VEH-H)	0.0
AV TOTAL DELAY/DAY (VEH-H)	0.0

**\*----- SITE ACCIDENT DELAYS -----\***

BREAKDOWN DURATION (MINS)	0
RANGE OF QUEUE DELAY - MIN (VEH-H) MAX	0
AV BREAKDOWNS PER DAY	0
AV QUEUE DELAY/DAY (VEH-H)	0
AV TOTAL DELAY/DAY (VEH-H)	0

**AVERAGE ACCIDENT NUMBERS (PIA/DAY)**

MAIN ROUTE WITHOUT WORKS	0.0052
MAIN ROUTE WITH WORKS	0.0041
'DIVERSION'	0.0000

PIA: Personal Injury Accidents

**IMPACTS ON ROAD USERS**

ROAD USER COSTS PER DAY	\$1,393
CONGESTED HOURS PER DAY*	0

\*Delays Exceeding User-Specified Maximum

**IH 794: LINCOLN AVE TO LINCOLN MEMORIAL DR (MILWAUKEE COUNTY)**  
**CONTINUOUS (24 HOUR) CLOSURE**  
**NO DIVERSION ROUTE (MAX QUEUE METHOD)**

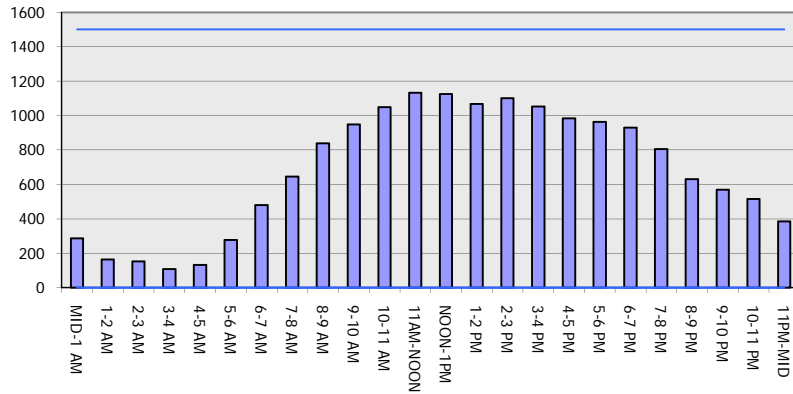
**AUGUST**

Analyzed for 2009  
 Construction Season

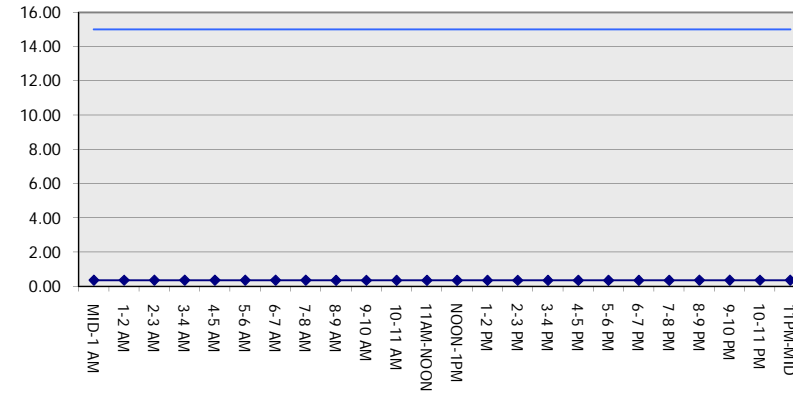
**GRAPHICAL REPRESENTATION OF TRAFFIC MODEL INPUT AND OUTPUT**

**SATURDAY WESTBOUND DIRECTION**

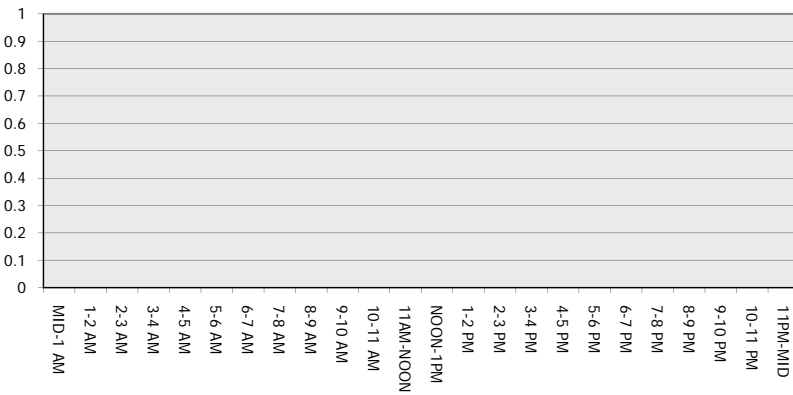
**Main Route - Traffic Demand (Vehicles Per Hour)**



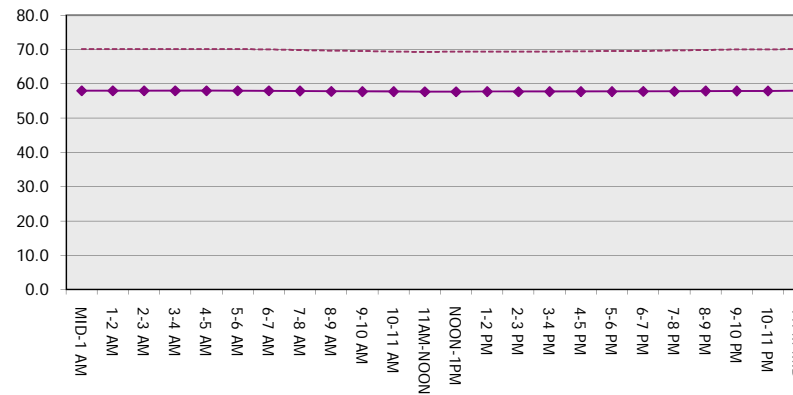
**Main Route Average Delay Per Vehicle (Minutes)**



**Main Route - Average Queue Length (Vehicles)**



**Main Route - Average Speed (MPH)**



<b>IH 794: LINCOLN AVE TO LINCOLN MEMORIAL DR (MILWAUKEE COUNTY)</b> <b>CONTINUOUS (24 HOUR) CLOSURE</b> <b>NO DIVERSION ROUTE (MAX QUEUE METHOD)</b>	<b>AUGUST</b>
	Analyzed for 2009 Construction Season

**SUMMARY OF TRAFFIC MODEL OUTPUT**

SATURDAY EASTBOUND DIRECTION

TIME OF DAY	FLOWS AND CAPACITY IN VEH/HR							AVERAGE SPEEDS IN MPH		
	MAIN ROUTE		SITE CAPA CITY	FLOW		AV.DEL PER VEH (MINS)	AVERAGE QUEUE (VEH)	MAIN ROUTE		SITE
	DEMAND FLOW	PCT HEAVY		MAIN ROUTE	'DIVER TED'			WITHOUT WORK ZONE	WITH WORK ZONE	
MID-1 AM	484	0.0	3000	484	0	0.36	0	70.1	58.0	49.7
1-2 AM	296	0.0	3000	296	0	0.36	0	70.2	58.0	49.7
2-3 AM	304	0.0	3000	304	0	0.36	0	70.2	58.0	49.7
3-4 AM	165	0.0	3000	165	0	0.36	0	70.2	58.0	49.7
4-5 AM	147	0.0	3000	147	0	0.36	0	70.2	58.0	49.7
5-6 AM	194	0.0	3000	194	0	0.36	0	70.2	58.0	49.7
6-7 AM	305	0.0	3000	305	0	0.36	0	70.2	58.0	49.7
7-8 AM	352	0.0	3000	352	0	0.36	0	70.2	58.0	49.7
8-9 AM	648	0.0	3000	648	0	0.36	0	69.9	57.9	49.7
9-10 AM	768	0.0	3000	768	0	0.35	0	69.8	57.9	49.7
10-11 AM	1031	0.0	3000	1031	0	0.35	0	69.4	57.8	49.7
11AM-NOON	1286	0.0	3000	1286	0	0.35	0	69.1	57.6	49.7
NOON-1PM	1382	0.0	3000	1382	0	0.34	0	69.0	57.6	49.7
1-2 PM	1328	0.0	3000	1328	0	0.35	0	69.1	57.6	49.7
2-3 PM	1356	0.0	3000	1356	0	0.35	0	69.1	57.6	49.7
3-4 PM	1112	0.0	3000	1112	0	0.35	0	69.4	57.7	49.7
4-5 PM	1063	0.0	3000	1063	0	0.35	0	69.4	57.8	49.7
5-6 PM	1006	0.0	3000	1006	0	0.35	0	69.5	57.8	49.7
6-7 PM	864	0.0	3000	864	0	0.35	0	69.7	57.8	49.7
7-8 PM	766	0.0	3000	766	0	0.35	0	69.8	57.9	49.7
8-9 PM	701	0.0	3000	701	0	0.36	0	69.9	57.9	49.7
9-10 PM	771	0.0	3000	771	0	0.35	0	69.8	57.9	49.7
10-11 PM	761	0.0	3000	761	0	0.35	0	69.8	57.9	49.7
11PM-MID	636	0.0	3000	636	0	0.36	0	69.9	57.9	49.7

*----- SITE BREAKDOWN DELAYS -----*	
BREAKDOWN DURATION (MINS)	0
RANGE OF QUEUE DELAY - MIN (VEH-H) MAX	0.0
AV BREAKDOWNS PER DAY	0.00
AV QUEUE DELAY/DAY (VEH-H)	0.0
AV TOTAL DELAY/DAY (VEH-H)	0.0

*----- SITE ACCIDENT DELAYS -----*	
BREAKDOWN DURATION (MINS)	0
RANGE OF QUEUE DELAY - MIN (VEH-H) MAX	0
AV BREAKDOWNS PER DAY	0
AV QUEUE DELAY/DAY (VEH-H)	0
AV TOTAL DELAY/DAY (VEH-H)	0

AVERAGE ACCIDENT NUMBERS (PIA/DAY)	
MAIN ROUTE WITHOUT WORKS	0.0056
MAIN ROUTE WITH WORKS	0.0045
'DIVERSION'	0.0000

PIA: Personal Injury Accidents

ECONOMIC IMPACT ON ROAD USERS	
ROAD USER COSTS PER DAY	\$1,506
CONGESTED HOURS PER DAY*	0

\*Delays Exceeding User-Specified Maximum

**IH 794: LINCOLN AVE TO LINCOLN MEMORIAL DR (MILWAUKEE COUNTY)  
 CONTINUOUS (24 HOUR) CLOSURE  
 NO DIVERSION ROUTE (MAX QUEUE METHOD)**

**AUGUST**  
 Analyzed for 2009  
 Construction Season

**GRAPHICAL REPRESENTATION OF TRAFFIC MODEL INPUT AND OUTPUT**  
**SATURDAY EASTBOUND DIRECTION**

