

**IH 794: IH 43 TO LINCOLN MEMORIAL DR (MILWAUKEE COUNTY)
CONTINUOUS (24 HOUR) 2 LANE CLOSURE
NO DIVERSION ROUTE (MAX QUEUE METHOD)**

OCTOBER
Analyzed for 2009
Construction Season

SUMMARY OF TRAFFIC MODEL OUTPUT
SUNDAY WESTBOUND DIRECTION

TIME OF DAY	FLOWS AND CAPACITY IN VEH/HR						AVERAGE SPEEDS IN MPH			
	MAIN ROUTE		SITE CAPA CITY	FLOW		AV.DEL PER VEH (MINS)	AVERAGE QUEUE (VEH)	MAIN ROUTE		SITE
	DEMAND FLOW	PCT HEAVY		MAIN ROUTE	'DIVER TED'			WITHOUT WORK ZONE	WITH WORK ZONE	
MID-1 AM	508	0.0	1500	508	0	0.27	0	70.1	53.3	43.5
1-2 AM	417	0.0	1500	417	0	0.26	0	70.2	53.6	43.8
2-3 AM	402	0.0	1500	402	0	0.26	0	70.2	53.6	43.9
3-4 AM	234	0.0	1500	234	0	0.25	0	70.2	54.2	44.5
4-5 AM	157	0.0	1500	157	0	0.25	0	70.2	54.3	44.8
5-6 AM	199	0.0	1500	199	0	0.25	0	70.2	54.2	44.7
6-7 AM	336	0.0	1500	336	0	0.26	0	70.2	53.8	44.2
7-8 AM	466	0.0	1500	466	0	0.27	0	70.2	53.4	43.7
8-9 AM	631	0.0	1500	631	0	0.28	0	69.9	52.8	43.0
9-10 AM	843	0.0	1500	843	0	0.29	0	69.7	52.2	42.2
10-11 AM	1151	0.0	1500	1151	0	0.33	0	69.3	50.4	40.1
11AM-NOON	1306	0.0	1500	1306	0	0.43	0	69.1	46.3	35.3
NOON-1PM	1329	0.0	1500	1329	0	0.44	0	69.1	45.8	34.7
1-2 PM	1248	0.0	1500	1248	0	0.39	0	69.2	47.8	37.0
2-3 PM	1262	0.0	1500	1262	0	0.40	0	69.2	47.4	36.6
3-4 PM	1383	0.0	1500	1383	0	0.48	0	69.0	44.5	33.4
4-5 PM	1178	0.0	1500	1178	0	0.34	0	69.2	49.6	39.1
5-6 PM	969	0.0	1500	969	0	0.30	0	69.6	51.8	41.8
6-7 PM	897	0.0	1500	897	0	0.29	0	69.6	52.0	42.0
7-8 PM	759	0.0	1500	759	0	0.28	0	69.8	52.5	42.5
8-9 PM	631	0.0	1500	631	0	0.28	0	69.9	52.8	43.0
9-10 PM	523	0.0	1500	523	0	0.27	0	70.1	53.2	43.4
10-11 PM	390	0.0	1500	390	0	0.26	0	70.2	53.7	43.9
11PM-MID	283	0.0	1500	283	0	0.26	0	70.2	54.0	44.3

----- SITE BREAKDOWN DELAYS -----

BREAKDOWN DURATION (MINS)	0
RANGE OF QUEUE DELAY - MIN (VEH-H) MAX	0.0
AV BREAKDOWNS PER DAY	0.00
AV QUEUE DELAY/DAY (VEH-H)	0.0
AV TOTAL DELAY/DAY (VEH-H)	0.0

----- SITE ACCIDENT DELAYS -----

BREAKDOWN DURATION (MINS)	0
RANGE OF QUEUE DELAY - MIN (VEH-H) MAX	0
AV BREAKDOWNS PER DAY	0
AV QUEUE DELAY/DAY (VEH-H)	0
AV TOTAL DELAY/DAY (VEH-H)	0

AVERAGE ACCIDENT NUMBERS (PIA/DAY)

MAIN ROUTE WITHOUT WORKS	0.0028
MAIN ROUTE WITH WORKS	0.0009
'DIVERSION'	0.0000

PIA: Personal Injury Accidents

IMPACTS ON ROAD USERS

ROAD USER COSTS PER DAY	\$1,672
CONGESTED HOURS PER DAY*	0

*Delays Exceeding User-Specified Maximum

**IH 794: IH 43 TO LINCOLN MEMORIAL DR (MILWAUKEE COUNTY)
 CONTINUOUS (24 HOUR) 2 LANE CLOSURE
 NO DIVERSION ROUTE (MAX QUEUE METHOD)**

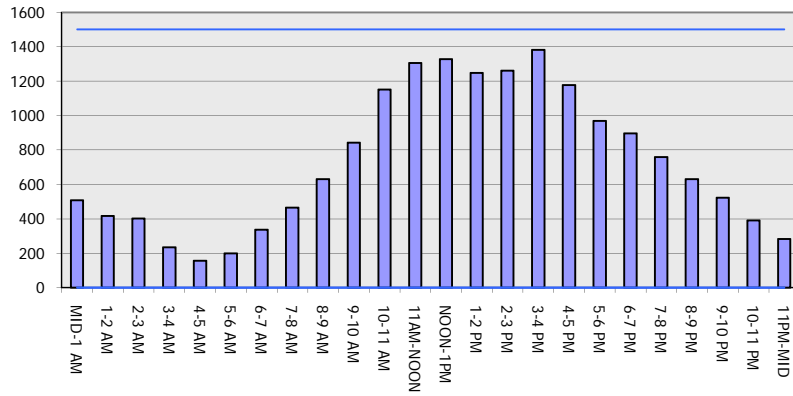
OCTOBER

Analyzed for 2009
 Construction Season

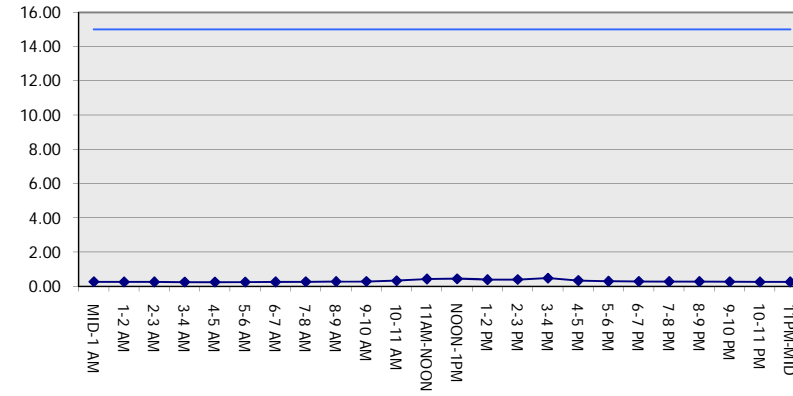
GRAPHICAL REPRESENTATION OF TRAFFIC MODEL INPUT AND OUTPUT

SUNDAY WESTBOUND DIRECTION

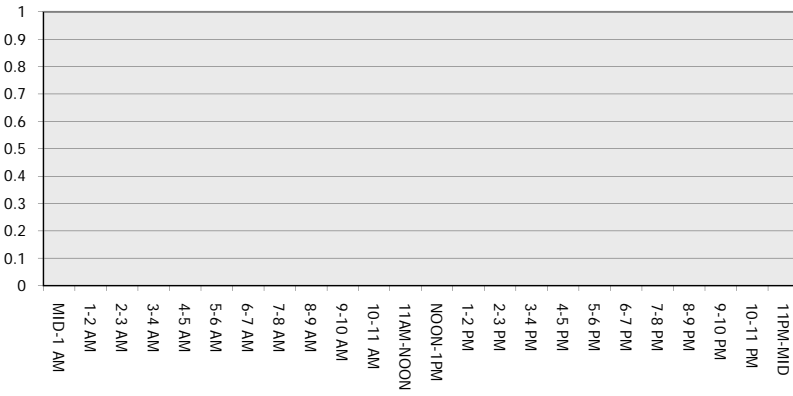
Main Route - Traffic Demand (Vehicles Per Hour)



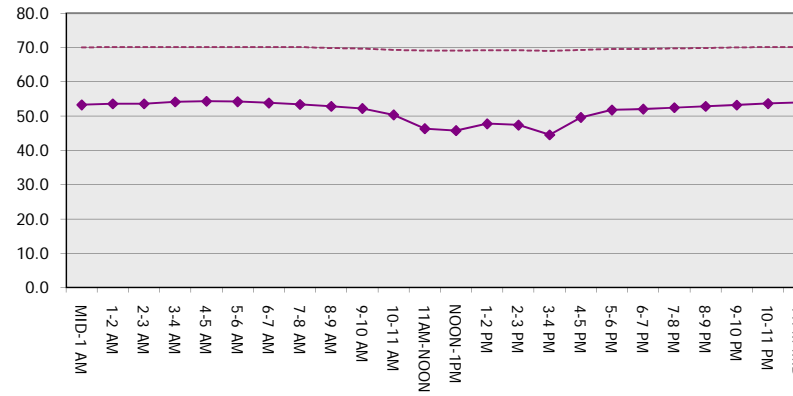
Main Route Average Delay Per Vehicle (Minutes)



Main Route - Average Queue Length (Vehicles)



Main Route - Average Speed (MPH)



IH 794: IH 43 TO LINCOLN MEMORIAL DR (MILWAUKEE COUNTY) CONTINUOUS (24 HOUR) 2 LANE CLOSURE NO DIVERSION ROUTE (MAX QUEUE METHOD)	OCTOBER
	Analyzed for 2009 Construction Season

SUMMARY OF TRAFFIC MODEL OUTPUT

SUNDAY EASTBOUND DIRECTION

TIME OF DAY	FLOWS AND CAPACITY IN VEH/HR							AVERAGE SPEEDS IN MPH		
	MAIN ROUTE		SITE CAPA CITY	FLOW		AV.DEL PER VEH (MINS)	AVERAGE QUEUE (VEH)	MAIN ROUTE		SITE
	DEMAND FLOW	PCT HEAVY		MAIN ROUTE	'DIVER TED'			WITHOUT WORK ZONE	WITH WORK ZONE	
MID-1 AM	854	0.0	1500	854	0	0.29	0	69.7	52.2	42.2
1-2 AM	498	0.0	1500	498	0	0.27	0	70.1	53.3	43.5
2-3 AM	335	0.0	1500	335	0	0.26	0	70.2	53.8	44.2
3-4 AM	227	0.0	1500	227	0	0.25	0	70.2	54.2	44.6
4-5 AM	219	0.0	1500	219	0	0.25	0	70.2	54.2	44.6
5-6 AM	402	0.0	1500	402	0	0.26	0	70.2	53.6	43.9
6-7 AM	582	0.0	1500	582	0	0.27	0	70.0	53.0	43.2
7-8 AM	829	0.0	1500	829	0	0.29	0	69.7	52.2	42.3
8-9 AM	1338	0.0	1499	1338	0	0.44	0	69.1	45.7	34.7
9-10 AM	1682	0.0	1499	1682	0	2.38	67	68.6	18.4	30.8
10-11 AM	2070	0.0	1500	1733	337	13.99+	359	68.2	5.9	30.8
11AM-NOON	2523	0.0	1500	1503	1020	16.69+	423	67.6	5.4	30.8
NOON-1PM	2675	0.0	1500	1506	1169	16.73+	424	67.4	5.4	30.8
1-2 PM	2627	0.0	1500	1501	1126	16.71+	423	67.4	5.4	30.8
2-3 PM	2406	0.0	1500	1500	906	16.68+	422	67.8	5.4	30.8
3-4 PM	2503	0.0	1499	1500	1003	16.68+	422	67.6	5.4	30.8
4-5 PM	2755	0.0	1499	1502	1252	16.80+	426	67.3	5.4	30.8
5-6 PM	2754	0.0	1500	1500	1254	16.80+	426	67.3	5.4	30.8
6-7 PM	2502	0.0	1500	1500	1002	16.68+	422	67.6	5.4	30.8
7-8 PM	2020	0.0	1500	1500	520	16.66+	421	68.2	5.4	30.8
8-9 PM	1690	0.0	1500	1500	191	16.64+	421	68.6	5.4	30.8
9-10 PM	1408	0.0	1499	1401	7	15.62+	395	69.0	5.6	30.8
10-11 PM	966	0.0	1499	966	0	1.79	119	69.6	24.2	38.2
11PM-MID	545	0.0	1500	545	0	0.27	0	70.0	53.2	43.3

+ INDICATES QUEUEING EXCEEDS USER-SPECIFIED MAXIMUM LIMIT

----- SITE BREAKDOWN DELAYS -----	
BREAKDOWN DURATION (MINS)	0
RANGE OF QUEUE DELAY - MIN (VEH-H) MAX	0.0
AV BREAKDOWNS PER DAY	0.00
AV QUEUE DELAY/DAY (VEH-H)	0.0
AV TOTAL DELAY/DAY (VEH-H)	0.0

----- SITE ACCIDENT DELAYS -----	
BREAKDOWN DURATION (MINS)	0
RANGE OF QUEUE DELAY - MIN (VEH-H) MAX	0
AV BREAKDOWNS PER DAY	0
AV QUEUE DELAY/DAY (VEH-H)	0
AV TOTAL DELAY/DAY (VEH-H)	0

AVERAGE ACCIDENT NUMBERS (PIA/DAY)	
MAIN ROUTE WITHOUT WORKS	0.0058
MAIN ROUTE WITH WORKS	0.0013
'DIVERSION'	0.0036

PIA: Personal Injury Accidents

ECONOMIC IMPACT ON ROAD USERS	
ROAD USER COSTS PER DAY	\$130,809
CONGESTED HOURS PER DAY*	12

*Delays Exceeding User-Specified Maximum

**IH 794: IH 43 TO LINCOLN MEMORIAL DR (MILWAUKEE COUNTY)
CONTINUOUS (24 HOUR) 2 LANE CLOSURE
NO DIVERSION ROUTE (MAX QUEUE METHOD)**

OCTOBER
Analyzed for 2009
Construction Season

GRAPHICAL REPRESENTATION OF TRAFFIC MODEL INPUT AND OUTPUT
SUNDAY EASTBOUND DIRECTION

