

**IH 794: IH 43 TO LINCOLN MEMORIAL DR (MILWAUKEE COUNTY)
CONTINUOUS (24 HOUR) CLOSURE
NO DIVERSION ROUTE (MAX QUEUE METHOD)**

OCTOBER
Analyzed for 2009
Construction Season

SUMMARY OF TRAFFIC MODEL OUTPUT
SUNDAY WESTBOUND DIRECTION

TIME OF DAY	FLOWS AND CAPACITY IN VEH/HR						AVERAGE SPEEDS IN MPH			
	MAIN ROUTE		SITE CAPA CITY	FLOW		AV.DEL PER VEH (MINS)	AVERAGE QUEUE (VEH)	MAIN ROUTE		SITE
	DEMAND FLOW	PCT HEAVY		MAIN ROUTE	'DIVER TED'			WITHOUT WORK ZONE	WITH WORK ZONE	
MID-1 AM	508	0.0	3000	508	0	0.18	0	70.1	57.8	49.7
1-2 AM	417	0.0	3000	417	0	0.18	0	70.2	57.9	49.7
2-3 AM	402	0.0	3000	402	0	0.18	0	70.2	57.9	49.7
3-4 AM	234	0.0	3000	234	0	0.18	0	70.2	57.9	49.7
4-5 AM	157	0.0	3000	157	0	0.18	0	70.2	57.9	49.7
5-6 AM	199	0.0	3000	199	0	0.18	0	70.2	57.9	49.7
6-7 AM	336	0.0	3000	336	0	0.18	0	70.2	57.9	49.7
7-8 AM	466	0.0	3000	466	0	0.18	0	70.2	57.9	49.7
8-9 AM	631	0.0	3000	631	0	0.18	0	69.9	57.8	49.7
9-10 AM	843	0.0	3000	843	0	0.18	0	69.7	57.7	49.7
10-11 AM	1151	0.0	3000	1151	0	0.18	0	69.3	57.6	49.7
11AM-NOON	1306	0.0	3000	1306	0	0.18	0	69.1	57.5	49.7
NOON-1PM	1329	0.0	3000	1329	0	0.17	0	69.1	57.5	49.7
1-2 PM	1248	0.0	3000	1248	0	0.18	0	69.2	57.6	49.7
2-3 PM	1262	0.0	3000	1262	0	0.18	0	69.2	57.5	49.7
3-4 PM	1383	0.0	3000	1383	0	0.17	0	69.0	57.5	49.7
4-5 PM	1178	0.0	3000	1178	0	0.18	0	69.2	57.6	49.7
5-6 PM	969	0.0	3000	969	0	0.18	0	69.6	57.6	49.7
6-7 PM	897	0.0	3000	897	0	0.18	0	69.6	57.7	49.7
7-8 PM	759	0.0	3000	759	0	0.18	0	69.8	57.8	49.7
8-9 PM	631	0.0	3000	631	0	0.18	0	69.9	57.8	49.7
9-10 PM	523	0.0	3000	523	0	0.18	0	70.1	57.8	49.7
10-11 PM	390	0.0	3000	390	0	0.18	0	70.2	57.9	49.7
11PM-MID	283	0.0	3000	283	0	0.18	0	70.2	57.9	49.7

----- SITE BREAKDOWN DELAYS -----

BREAKDOWN DURATION (MINS)	0
RANGE OF QUEUE DELAY - MIN (VEH-H) MAX	0.0
AV BREAKDOWNS PER DAY	0.00
AV QUEUE DELAY/DAY (VEH-H)	0.0
AV TOTAL DELAY/DAY (VEH-H)	0.0

----- SITE ACCIDENT DELAYS -----

BREAKDOWN DURATION (MINS)	0
RANGE OF QUEUE DELAY - MIN (VEH-H) MAX	0
AV BREAKDOWNS PER DAY	0
AV QUEUE DELAY/DAY (VEH-H)	0
AV TOTAL DELAY/DAY (VEH-H)	0

AVERAGE ACCIDENT NUMBERS (PIA/DAY)

MAIN ROUTE WITHOUT WORKS	0.0028
MAIN ROUTE WITH WORKS	0.0009
'DIVERSION'	0.0000

PIA: Personal Injury Accidents

IMPACTS ON ROAD USERS

ROAD USER COSTS PER DAY	\$776
CONGESTED HOURS PER DAY*	0

*Delays Exceeding User-Specified Maximum

**IH 794: IH 43 TO LINCOLN MEMORIAL DR (MILWAUKEE COUNTY)
CONTINUOUS (24 HOUR) CLOSURE
NO DIVERSION ROUTE (MAX QUEUE METHOD)**

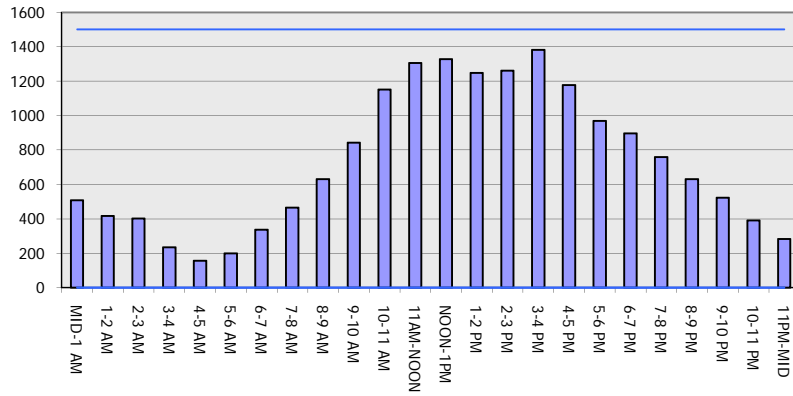
OCTOBER

Analyzed for 2009
Construction Season

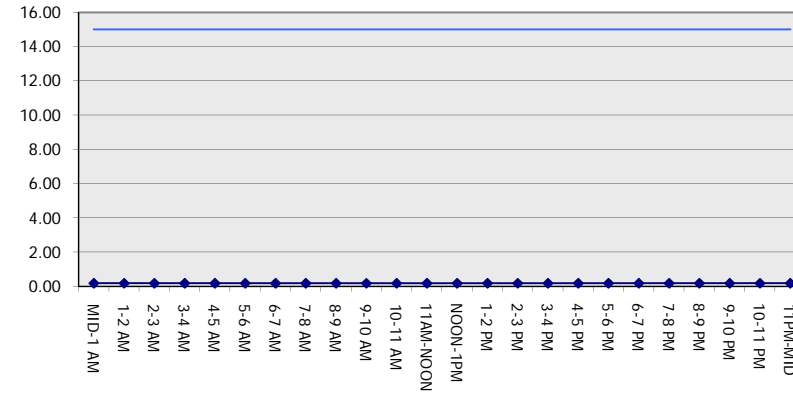
GRAPHICAL REPRESENTATION OF TRAFFIC MODEL INPUT AND OUTPUT

SUNDAY WESTBOUND DIRECTION

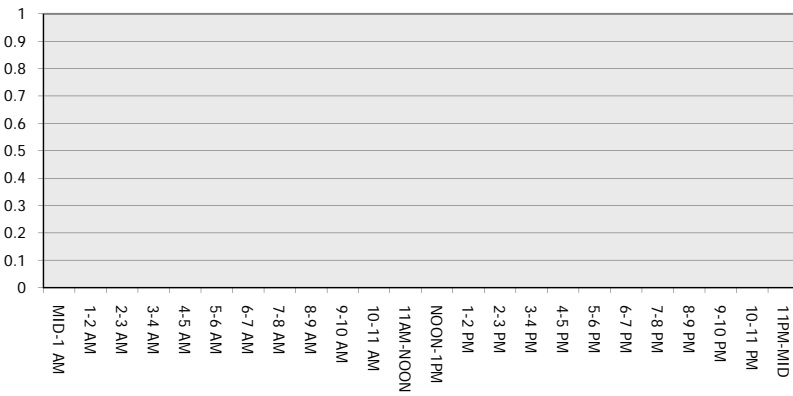
Main Route - Traffic Demand (Vehicles Per Hour)



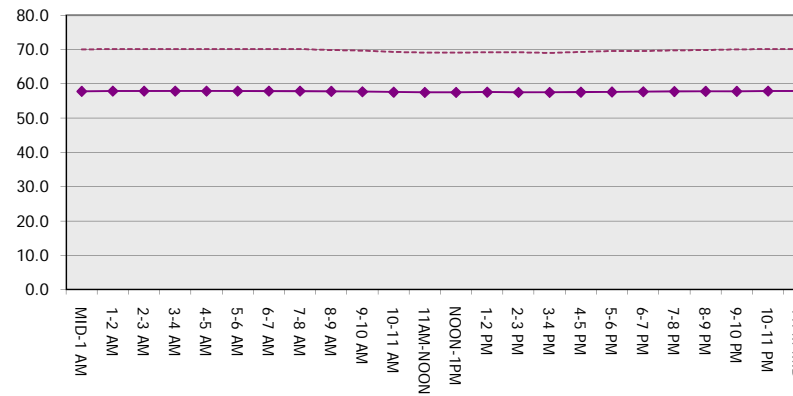
Main Route Average Delay Per Vehicle (Minutes)



Main Route - Average Queue Length (Vehicles)



Main Route - Average Speed (MPH)



IH 794: IH 43 TO LINCOLN MEMORIAL DR (MILWAUKEE COUNTY) CONTINUOUS (24 HOUR) CLOSURE NO DIVERSION ROUTE (MAX QUEUE METHOD)	OCTOBER
	Analyzed for 2009 Construction Season

SUMMARY OF TRAFFIC MODEL OUTPUT

SUNDAY EASTBOUND DIRECTION

TIME OF DAY	FLOWS AND CAPACITY IN VEH/HR						AVERAGE SPEEDS IN MPH			
	MAIN ROUTE		SITE CAPA CITY	FLOW		AV.DEL PER VEH (MINS)	AVERAGE QUEUE (VEH)	MAIN ROUTE		SITE
	DEMAND FLOW	PCT HEAVY		MAIN ROUTE	'DIVER TED'			WITHOUT WORK ZONE	WITH WORK ZONE	
MID-1 AM	854	0.0	3000	854	0	0.18	0	69.7	57.7	49.7
1-2 AM	498	0.0	3000	498	0	0.18	0	70.1	57.9	49.7
2-3 AM	335	0.0	3000	335	0	0.18	0	70.2	57.9	49.7
3-4 AM	227	0.0	3000	227	0	0.18	0	70.2	57.9	49.7
4-5 AM	219	0.0	3000	219	0	0.18	0	70.2	57.9	49.7
5-6 AM	402	0.0	3000	402	0	0.18	0	70.2	57.9	49.7
6-7 AM	582	0.0	3000	582	0	0.18	0	70.0	57.8	49.7
7-8 AM	829	0.0	3000	829	0	0.18	0	69.7	57.7	49.7
8-9 AM	1338	0.0	3000	1338	0	0.17	0	69.1	57.5	49.7
9-10 AM	1682	0.0	3000	1682	0	0.17	0	68.6	57.4	49.7
10-11 AM	2070	0.0	3000	2070	0	0.17	0	68.2	57.2	49.7
11AM-NOON	2523	0.0	3000	2523	0	0.21	0	67.6	54.6	46.3
NOON-1PM	2675	0.0	3000	2675	0	0.26	0	67.4	52.1	43.0
1-2 PM	2627	0.0	3000	2627	0	0.25	0	67.4	52.8	44.0
2-3 PM	2406	0.0	3000	2406	0	0.17	0	67.8	56.7	49.2
3-4 PM	2503	0.0	3000	2503	0	0.20	0	67.6	55.0	46.8
4-5 PM	2755	0.0	3000	2755	0	0.29	0	67.3	50.9	41.4
5-6 PM	2754	0.0	3000	2754	0	0.29	0	67.3	50.9	41.4
6-7 PM	2502	0.0	3000	2502	0	0.20	0	67.6	55.0	46.8
7-8 PM	2020	0.0	3000	2020	0	0.17	0	68.2	57.2	49.7
8-9 PM	1690	0.0	3000	1690	0	0.17	0	68.6	57.4	49.7
9-10 PM	1408	0.0	3000	1408	0	0.17	0	69.0	57.4	49.7
10-11 PM	966	0.0	3000	966	0	0.18	0	69.6	57.6	49.7
11PM-MID	545	0.0	3000	545	0	0.18	0	70.0	57.8	49.7

----- SITE BREAKDOWN DELAYS -----	
BREAKDOWN DURATION (MINS)	0
RANGE OF QUEUE DELAY - MIN (VEH-H) MAX	0.0
AV BREAKDOWNS PER DAY	0.00
AV QUEUE DELAY/DAY (VEH-H)	0.0
AV TOTAL DELAY/DAY (VEH-H)	0.0

----- SITE ACCIDENT DELAYS -----	
BREAKDOWN DURATION (MINS)	0
RANGE OF QUEUE DELAY - MIN (VEH-H) MAX	0
AV BREAKDOWNS PER DAY	0
AV QUEUE DELAY/DAY (VEH-H)	0
AV TOTAL DELAY/DAY (VEH-H)	0

AVERAGE ACCIDENT NUMBERS (PIA/DAY)	
MAIN ROUTE WITHOUT WORKS	0.0058
MAIN ROUTE WITH WORKS	0.0018
'DIVERSION'	0.0000

PIA: Personal Injury Accidents

ECONOMIC IMPACT ON ROAD USERS	
ROAD USER COSTS PER DAY	\$1,890
CONGESTED HOURS PER DAY*	0

*Delays Exceeding User-Specified Maximum

**IH 794: IH 43 TO LINCOLN MEMORIAL DR (MILWAUKEE COUNTY)
CONTINUOUS (24 HOUR) CLOSURE
NO DIVERSION ROUTE (MAX QUEUE METHOD)**

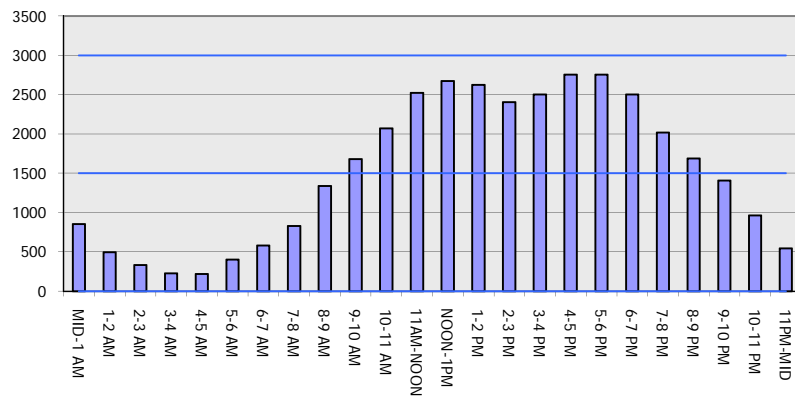
OCTOBER

Analyzed for 2009
Construction Season

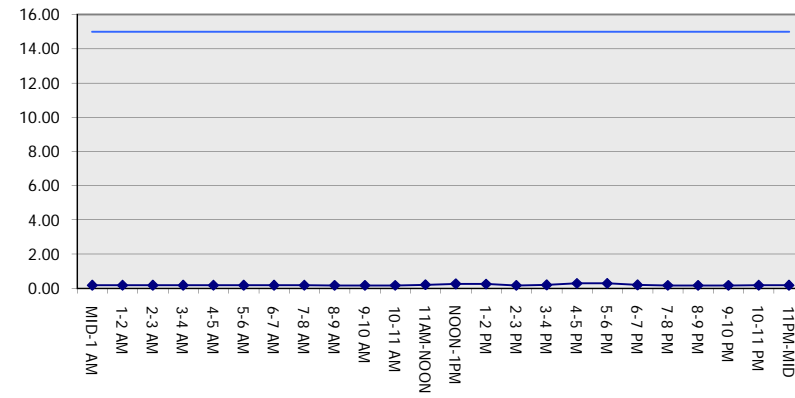
GRAPHICAL REPRESENTATION OF TRAFFIC MODEL INPUT AND OUTPUT

SUNDAY EASTBOUND DIRECTION

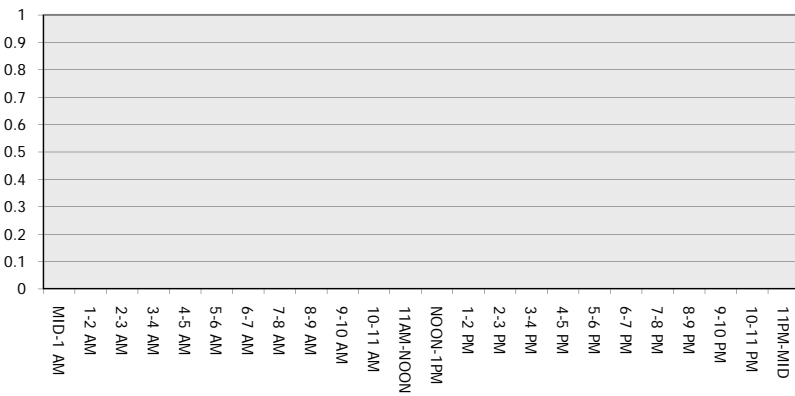
Main Route - Traffic Demand (Vehicles Per Hour)



Main Route Average Delay Per Vehicle (Minutes)



Main Route - Average Queue Length (Vehicles)



Main Route - Average Speed (MPH)

