

**IH 794: IH 43 TO LINCOLN MEMORIAL DR (MILWAUKEE COUNTY)
CONTINUOUS (24 HOUR) 2 LANE CLOSURE
NO DIVERSION ROUTE (MAX QUEUE METHOD)**

OCTOBER
Analyzed for 2009
Construction Season

SUMMARY OF TRAFFIC MODEL OUTPUT
SATURDAY WESTBOUND DIRECTION

TIME OF DAY	FLOWS AND CAPACITY IN VEH/HR						AVERAGE SPEEDS IN MPH				
	MAIN ROUTE		SITE CAPA CITY	FLOW		AV.DEL PER VEH (MINS)	AVERAGE QUEUE (VEH)	MAIN ROUTE		SITE	
	DEMAND FLOW	PCT HEAVY		MAIN ROUTE	'DIVER TED'			WITHOUT WORK ZONE	WITH WORK ZONE		
MID-1 AM	422	0.0	1500	422	0	0.27	0	70.2	53.5	43.8	
1-2 AM	396	0.0	1500	396	0	0.26	0	70.2	53.7	43.9	
2-3 AM	324	0.0	1500	324	0	0.26	0	70.2	53.8	44.2	
3-4 AM	207	0.0	1500	207	0	0.25	0	70.2	54.2	44.6	
4-5 AM	206	0.0	1500	206	0	0.25	0	70.2	54.2	44.6	
5-6 AM	307	0.0	1500	307	0	0.26	0	70.2	53.9	44.3	
6-7 AM	554	0.0	1500	554	0	0.27	0	70.0	53.2	43.3	
7-8 AM	879	0.0	1500	879	0	0.29	0	69.6	52.1	42.1	
8-9 AM	1086	0.0	1500	1086	0	0.30	0	69.4	51.4	41.4	
9-10 AM	1252	0.0	1500	1252	0	0.39	0	69.2	47.6	36.9	
10-11 AM	1456	0.0	1499	1456	0	0.53	0	68.9	43.0	31.7	
11AM-NOON	1546	0.0	1499	1546	0	1.30	21	68.8	27.6	30.8	
NOON-1PM	1503	0.0	1499	1503	0	2.48	50	68.9	17.9	30.8	
1-2 PM	1467	0.0	1499	1467	0	1.79	33	68.9	22.5	30.8	
2-3 PM	1481	0.0	1500	1481	0	0.86	8	68.9	34.6	31.0	
3-4 PM	1393	0.0	1500	1393	0	0.49	0	69.0	44.3	33.1	
4-5 PM	1303	0.0	1500	1303	0	0.43	0	69.1	46.4	35.4	
5-6 PM	1034	0.0	1500	1034	0	0.30	0	69.4	51.6	41.5	
6-7 PM	1036	0.0	1500	1036	0	0.30	0	69.4	51.6	41.5	
7-8 PM	818	0.0	1500	818	0	0.29	0	69.7	52.3	42.4	
8-9 PM	843	0.0	1500	843	0	0.29	0	69.7	52.2	42.2	
9-10 PM	849	0.0	1500	849	0	0.29	0	69.7	52.2	42.2	
10-11 PM	841	0.0	1500	841	0	0.29	0	69.7	52.2	42.2	
11PM-MID	674	0.0	1500	674	0	0.28	0	69.9	52.7	42.8	

----- SITE BREAKDOWN DELAYS -----

BREAKDOWN DURATION (MINS)	0
RANGE OF QUEUE DELAY - MIN (VEH-H) MAX	0.0
AV BREAKDOWNS PER DAY	0.00
AV QUEUE DELAY/DAY (VEH-H)	0.0
AV TOTAL DELAY/DAY (VEH-H)	0.0

----- SITE ACCIDENT DELAYS -----

BREAKDOWN DURATION (MINS)	0
RANGE OF QUEUE DELAY - MIN (VEH-H) MAX	0
AV BREAKDOWNS PER DAY	0
AV QUEUE DELAY/DAY (VEH-H)	0
AV TOTAL DELAY/DAY (VEH-H)	0

AVERAGE ACCIDENT NUMBERS (PIA/DAY)

MAIN ROUTE WITHOUT WORKS	0.0035
MAIN ROUTE WITH WORKS	0.0011
'DIVERSION'	0.0000

PIA: Personal Injury Accidents

IMPACTS ON ROAD USERS

ROAD USER COSTS PER DAY	\$4,155
CONGESTED HOURS PER DAY*	0

*Delays Exceeding User-Specified Maximum

**IH 794: IH 43 TO LINCOLN MEMORIAL DR (MILWAUKEE COUNTY)
 CONTINUOUS (24 HOUR) 2 LANE CLOSURE
 NO DIVERSION ROUTE (MAX QUEUE METHOD)**

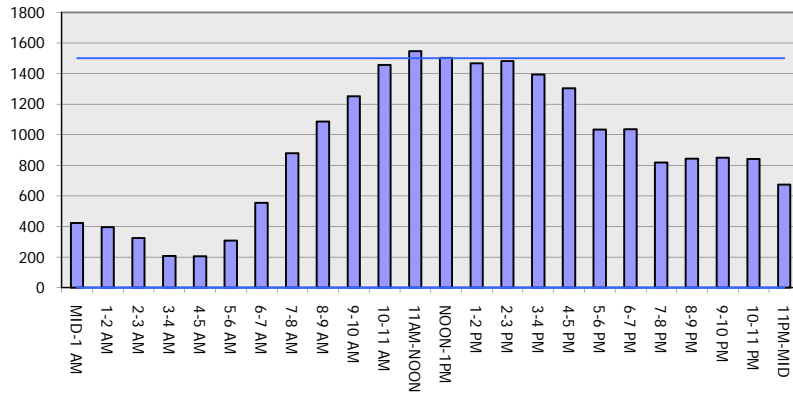
OCTOBER

Analyzed for 2009
 Construction Season

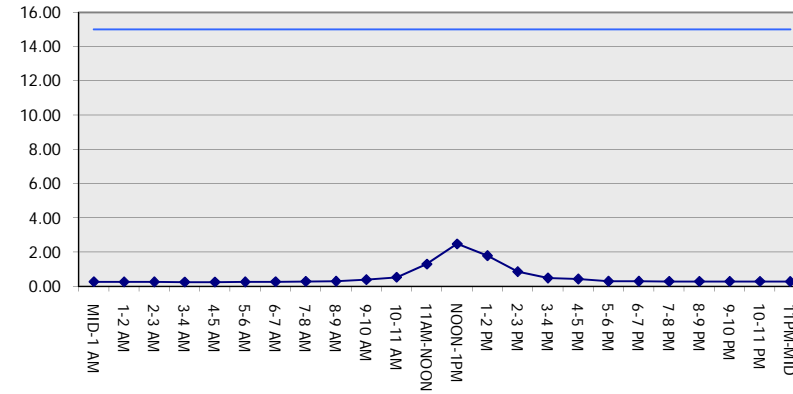
GRAPHICAL REPRESENTATION OF TRAFFIC MODEL INPUT AND OUTPUT

SATURDAY WESTBOUND DIRECTION

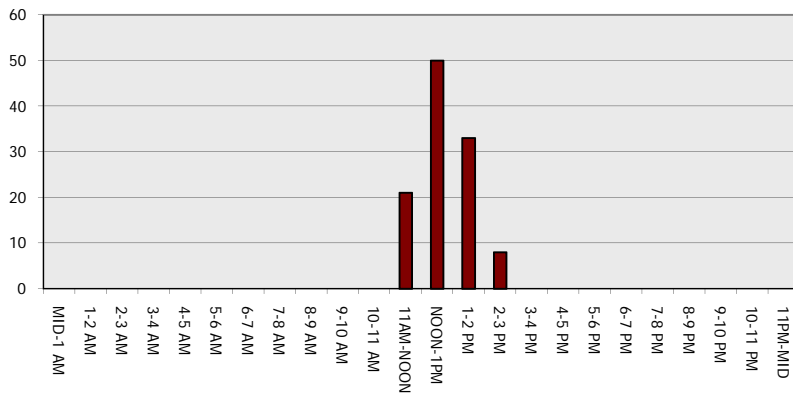
Main Route - Traffic Demand (Vehicles Per Hour)



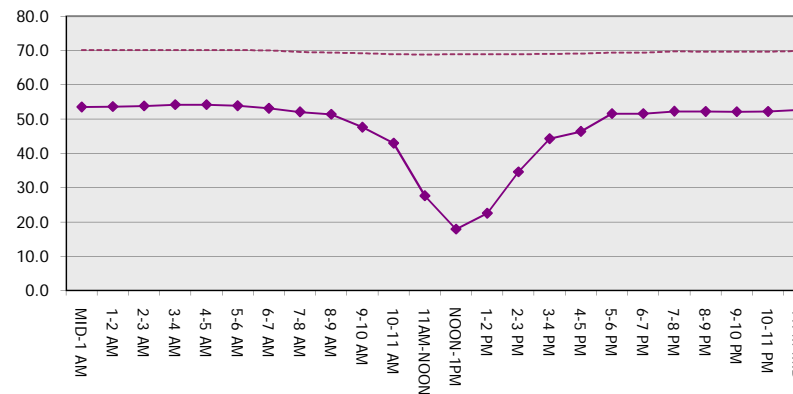
Main Route Average Delay Per Vehicle (Minutes)



Main Route - Average Queue Length (Vehicles)



Main Route - Average Speed (MPH)



IH 794: IH 43 TO LINCOLN MEMORIAL DR (MILWAUKEE COUNTY) CONTINUOUS (24 HOUR) 2 LANE CLOSURE NO DIVERSION ROUTE (MAX QUEUE METHOD)	OCTOBER
	Analyzed for 2009 Construction Season

SUMMARY OF TRAFFIC MODEL OUTPUT

SATURDAY EASTBOUND DIRECTION

TIME OF DAY	FLOWS AND CAPACITY IN VEH/HR							AVERAGE SPEEDS IN MPH			
	MAIN ROUTE		SITE CAPA CITY	FLOW		AV.DEL PER VEH (MINS)	AVERAGE QUEUE (VEH)	MAIN ROUTE		SITE	
	DEMAND FLOW	PCT HEAVY		MAIN ROUTE	'DIVER TED'			WITHOUT WORK ZONE	WITH WORK ZONE		
MID-1 AM	756	0.0	1499	756	0	1.23	95	69.8	30.0	41.3	
1-2 AM	406	0.0	1500	406	0	0.26	0	70.2	53.6	43.8	
2-3 AM	336	0.0	1500	336	0	0.26	0	70.2	53.8	44.2	
3-4 AM	270	0.0	1500	270	0	0.26	0	70.2	54.0	44.4	
4-5 AM	304	0.0	1500	304	0	0.26	0	70.2	53.9	44.3	
5-6 AM	736	0.0	1500	736	0	0.28	0	69.8	52.5	42.6	
6-7 AM	1081	0.0	1499	1081	0	0.32	0	69.4	50.5	40.3	
7-8 AM	1611	0.0	1499	1611	0	1.18	31	68.7	29.1	31.1	
8-9 AM	2196	0.0	1500	1804	393	13.42+	349	68.0	6.0	30.8	
9-10 AM	2318	0.0	1499	1499	818	16.67+	422	67.9	5.4	30.8	
10-11 AM	2563	0.0	1499	1498	1065	16.69+	423	67.6	5.4	30.8	
11AM-NOON	2760	0.0	1499	1500	1260	16.81+	426	67.3	5.4	30.8	
NOON-1PM	2910	0.0	1499	1503	1407	16.93+	429	67.1	5.4	30.8	
1-2 PM	2821	0.0	1500	1499	1322	16.86+	427	67.3	5.4	30.8	
2-3 PM	3000	0.0	1499	1503	1497	17.01+	431	67.0	5.3	30.8	
3-4 PM	3179	0.0	1499	1502	1677	17.14+	435	66.8	5.3	30.8	
4-5 PM	3311	0.0	1500	1500	1811	17.14+	435	66.6	5.3	30.8	
5-6 PM	3555	0.0	1500	1500	2055	17.14+	435	66.3	5.3	30.8	
6-7 PM	3535	0.0	1500	1500	2035	17.14+	435	66.3	5.3	30.8	
7-8 PM	2650	0.0	1500	1497	1154	16.77+	425	67.4	5.4	30.8	
8-9 PM	2133	0.0	1500	1499	633	16.66+	422	68.1	5.4	30.8	
9-10 PM	2204	0.0	1499	1499	705	16.67+	422	68.0	5.4	30.8	
10-11 PM	1998	0.0	1499	1499	499	16.66+	421	68.2	5.4	30.8	
11PM-MID	1486	0.0	1500	1415	71	15.92+	402	68.9	5.5	30.8	

+ INDICATES QUEUEING EXCEEDS USER-SPECIFIED MAXIMUM LIMIT

----- SITE BREAKDOWN DELAYS -----	
BREAKDOWN DURATION (MINS)	0
RANGE OF QUEUE DELAY - MIN (VEH-H) MAX	0.0
AV BREAKDOWNS PER DAY	0.00
AV QUEUE DELAY/DAY (VEH-H)	0.0
AV TOTAL DELAY/DAY (VEH-H)	0.0

----- SITE ACCIDENT DELAYS -----	
BREAKDOWN DURATION (MINS)	0
RANGE OF QUEUE DELAY - MIN (VEH-H) MAX	0
AV BREAKDOWNS PER DAY	0
AV QUEUE DELAY/DAY (VEH-H)	0
AV TOTAL DELAY/DAY (VEH-H)	0

AVERAGE ACCIDENT NUMBERS (PIA/DAY)	
MAIN ROUTE WITHOUT WORKS	0.0077
MAIN ROUTE WITH WORKS	0.0015
'DIVERSION'	0.0068

PIA: Personal Injury Accidents

ECONOMIC IMPACT ON ROAD USERS	
ROAD USER COSTS PER DAY	\$196,335
CONGESTED HOURS PER DAY*	16

*Delays Exceeding User-Specified Maximum

**IH 794: IH 43 TO LINCOLN MEMORIAL DR (MILWAUKEE COUNTY)
CONTINUOUS (24 HOUR) 2 LANE CLOSURE
NO DIVERSION ROUTE (MAX QUEUE METHOD)**

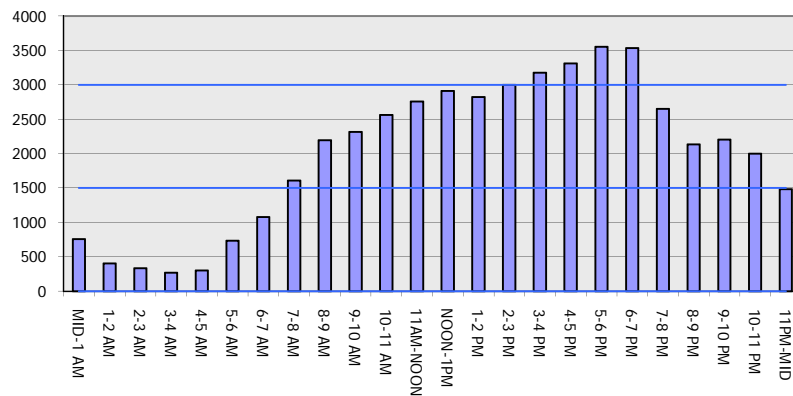
OCTOBER

Analyzed for 2009
Construction Season

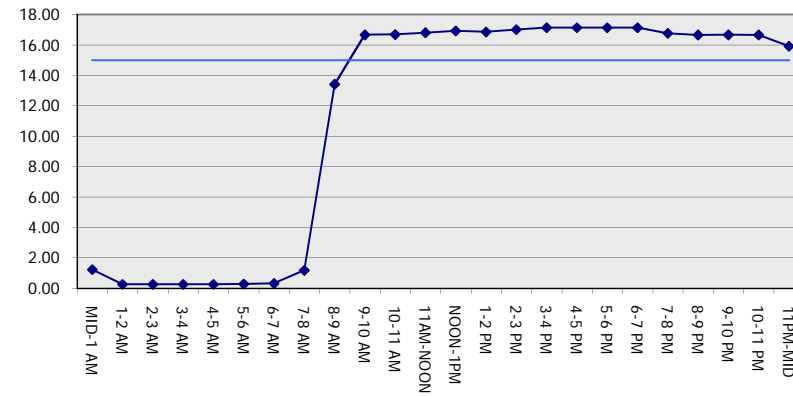
GRAPHICAL REPRESENTATION OF TRAFFIC MODEL INPUT AND OUTPUT

SATURDAY EASTBOUND DIRECTION

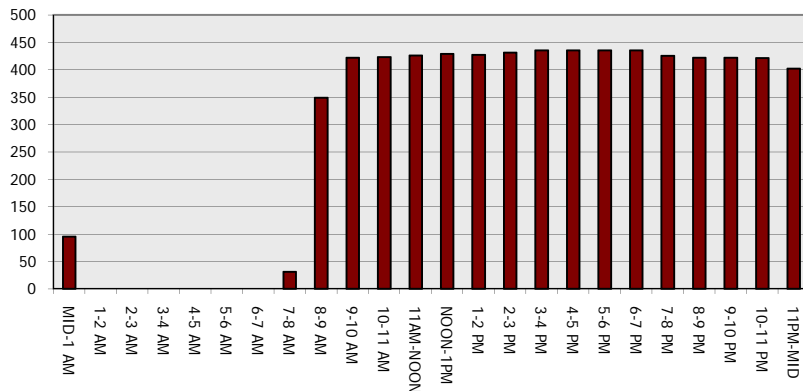
Main Route - Traffic Demand (Vehicles Per Hour)



Main Route Average Delay Per Vehicle (Minutes)



Main Route - Average Queue Length (Vehicles)



Main Route - Average Speed (MPH)

