

<b>IH 794: IH 43 TO LINCOLN MEMORIAL DR (MILWAUKEE COUNTY)                  CONTINUOUS (24 HOUR) 2 LANE CLOSURE                  NO DIVERSION ROUTE (MAX QUEUE METHOD)</b>	<b>OCTOBER</b>
	Analyzed for 2009 Construction Season

**SUMMARY OF TRAFFIC MODEL OUTPUT**

MON-THUR                  WESTBOUND DIRECTION

TIME OF DAY	FLOWS AND CAPACITY IN VEH/HR							AVERAGE SPEEDS IN MPH			
	MAIN ROUTE		SITE CAPA CITY	FLOW		AV.DEL PER VEH (MINS)	AVERAGE QUEUE (VEH)	MAIN ROUTE		SITE	
	DEMAND FLOW	PCT HEAVY		MAIN ROUTE	'DIVER TED'			WITHOUT WORK ZONE	WITH WORK ZONE		
MID-1 AM	227	0.0	1500	227	0	0.25	0	70.2	54.2	44.6	
1-2 AM	172	0.0	1500	172	0	0.25	0	70.2	54.3	44.8	
2-3 AM	139	0.0	1500	139	0	0.25	0	70.2	54.4	44.9	
3-4 AM	146	0.0	1500	146	0	0.25	0	70.2	54.4	44.9	
4-5 AM	269	0.0	1500	269	0	0.26	0	70.2	54.0	44.4	
5-6 AM	797	0.0	1500	797	0	0.29	0	69.7	52.4	42.4	
6-7 AM	2037	0.0	1499	2037	0	6.39+	210	68.2	9.9	30.8	
7-8 AM	2643	0.0	1500	1444	1199	16.93+	429	67.4	5.4	31.0	
8-9 AM	1720	0.0	1499	1434	286	16.42+	415	68.6	5.5	30.8	
9-10 AM	1197	0.0	1499	1197	0	10.58	278	69.2	6.8	32.1	
10-11 AM	1216	0.0	1500	1216	0	0.73	19	69.2	37.6	36.9	
11AM-NOON	1405	0.0	1500	1405	0	0.49	0	69.0	44.0	32.9	
NOON-1PM	1466	0.0	1499	1466	0	0.53	0	68.9	42.7	31.5	
1-2 PM	1668	0.0	1499	1668	0	2.34	64	68.7	18.7	30.8	
2-3 PM	2090	0.0	1500	1756	334	13.92+	359	68.1	5.9	30.8	
3-4 PM	2289	0.0	1499	1500	789	16.67+	422	67.9	5.4	30.8	
4-5 PM	2267	0.0	1500	1500	767	16.67+	422	67.9	5.4	30.8	
5-6 PM	2107	0.0	1500	1500	607	16.66+	422	68.1	5.4	30.8	
6-7 PM	1590	0.0	1500	1486	104	16.55+	418	68.7	5.5	30.8	
7-8 PM	1160	0.0	1499	1160	0	9.46	256	69.3	7.3	32.9	
8-9 PM	1031	0.0	1500	1031	0	0.40	5	69.4	47.3	41.5	
9-10 PM	827	0.0	1500	827	0	0.29	0	69.7	52.2	42.3	
10-11 PM	539	0.0	1500	539	0	0.27	0	70.0	53.2	43.3	
11PM-MID	366	0.0	1500	366	0	0.26	0	70.2	53.7	44.0	

+ INDICATES QUEUEING EXCEEDS USER-SPECIFIED MAXIMUM LIMIT

*----- SITE BREAKDOWN DELAYS -----*	
BREAKDOWN DURATION (MINS)	0
RANGE OF QUEUE DELAY - MIN (VEH-H) MAX	0.0
AV BREAKDOWNS PER DAY	0.00
AV QUEUE DELAY/DAY (VEH-H)	0.0
AV TOTAL DELAY/DAY (VEH-H)	0.0

*----- SITE ACCIDENT DELAYS -----*	
BREAKDOWN DURATION (MINS)	0
RANGE OF QUEUE DELAY - MIN (VEH-H) MAX	0
AV BREAKDOWNS PER DAY	0
AV QUEUE DELAY/DAY (VEH-H)	0
AV TOTAL DELAY/DAY (VEH-H)	0

AVERAGE ACCIDENT NUMBERS (PIA/DAY)	
MAIN ROUTE WITHOUT WORKS	0.0047
MAIN ROUTE WITH WORKS	0.0013
'DIVERSION'	0.0015
PIA: Personal Injury Accidents	
IMPACTS ON ROAD USERS	
ROAD USER COSTS PER DAY	\$61,401
CONGESTED HOURS PER DAY*	8

\*Delays Exceeding User-Specified Maximum

**IH 794: IH 43 TO LINCOLN MEMORIAL DR (MILWAUKEE COUNTY)  
CONTINUOUS (24 HOUR) 2 LANE CLOSURE  
NO DIVERSION ROUTE (MAX QUEUE METHOD)**

**OCTOBER**

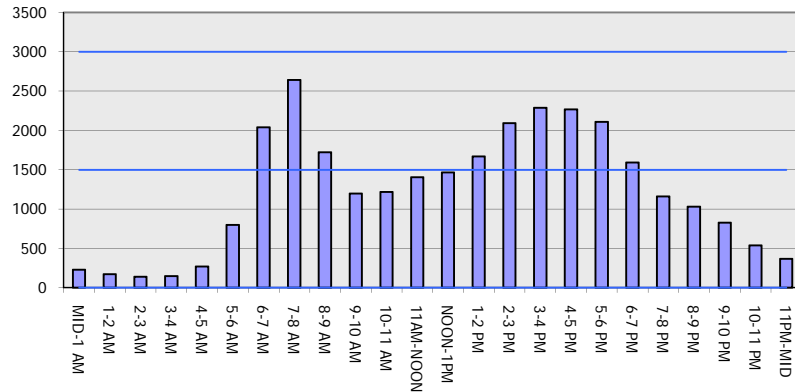
Analyzed for 2009  
Construction Season

**GRAPHICAL REPRESENTATION OF TRAFFIC MODEL INPUT AND OUTPUT**

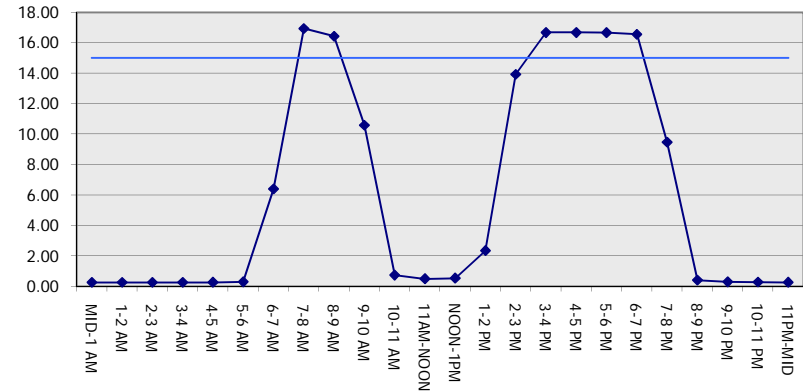
**MON-THUR**

**WESTBOUND DIRECTION**

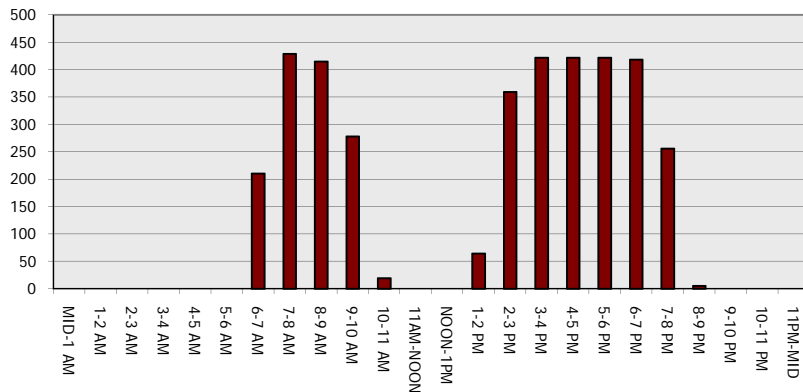
**Main Route - Traffic Demand (Vehicles Per Hour)**



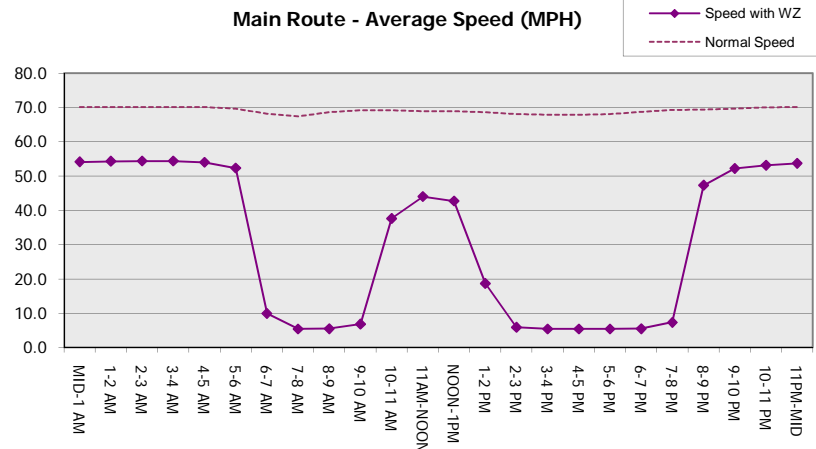
**Main Route Average Delay Per Vehicle (Minutes)**



**Main Route - Average Queue Length (Vehicles)**



**Main Route - Average Speed (MPH)**



<b>IH 794: IH 43 TO LINCOLN MEMORIAL DR (MILWAUKEE COUNTY)</b> <b>CONTINUOUS (24 HOUR) 2 LANE CLOSURE</b> <b>NO DIVERSION ROUTE (MAX QUEUE METHOD)</b>	<b>OCTOBER</b>
	Analyzed for 2009 Construction Season

**SUMMARY OF TRAFFIC MODEL OUTPUT**

MON-THUR                      EASTBOUND DIRECTION

TIME OF DAY	FLOWS AND CAPACITY IN VEH/HR							AVERAGE SPEEDS IN MPH			
	MAIN ROUTE		SITE CAPA CITY	FLOW		AV.DEL PER VEH (MINS)	AVERAGE QUEUE (VEH)	MAIN ROUTE		SITE	
	DEMAND FLOW	PCT HEAVY		MAIN ROUTE	'DIVER TED'			WITHOUT WORK ZONE	WITH WORK ZONE		
MID-1 AM	337	0.0	1500	337	0	0.26	0	70.2	53.8	44.2	
1-2 AM	232	0.0	1500	232	0	0.25	0	70.2	54.2	44.5	
2-3 AM	193	0.0	1500	193	0	0.25	0	70.2	54.3	44.7	
3-4 AM	240	0.0	1500	240	0	0.25	0	70.2	54.1	44.5	
4-5 AM	587	0.0	1500	587	0	0.27	0	70.0	53.0	43.2	
5-6 AM	2471	0.0	1499	1940	531	8.19+	252	67.7	8.3	30.8	
6-7 AM	4996	0.0	1499	1500	3496	16.88+	435	56.7	5.3	30.8	
7-8 AM	5557	0.0	1500	1500	4057	16.76+	435	52.9	5.3	30.8	
8-9 AM	5091	0.0	1500	1500	3591	16.86+	435	56.1	5.3	30.8	
9-10 AM	3358	0.0	1499	1497	1861	17.11+	434	66.6	5.3	30.8	
10-11 AM	2813	0.0	1500	1493	1320	16.86+	427	67.3	5.4	30.8	
11AM-NOON	2988	0.0	1499	1502	1486	17.00+	431	67.0	5.3	30.8	
NOON-1PM	2936	0.0	1500	1499	1436	16.96+	430	67.1	5.4	30.8	
1-2 PM	2925	0.0	1500	1500	1425	16.95+	430	67.1	5.4	30.8	
2-3 PM	3049	0.0	1499	1503	1547	17.05+	433	66.9	5.3	30.8	
3-4 PM	3449	0.0	1499	1500	1949	17.14+	435	66.4	5.3	30.8	
4-5 PM	4112	0.0	1500	1500	2612	17.05+	435	62.8	5.3	30.8	
5-6 PM	4238	0.0	1500	1500	2738	17.03+	435	61.9	5.3	30.8	
6-7 PM	3343	0.0	1500	1501	1842	17.12+	434	66.6	5.3	30.8	
7-8 PM	2321	0.0	1500	1499	822	16.67+	422	67.9	5.4	30.8	
8-9 PM	2071	0.0	1499	1499	572	16.66+	422	68.2	5.4	30.8	
9-10 PM	1758	0.0	1499	1499	259	16.64+	421	68.6	5.4	30.8	
10-11 PM	1247	0.0	1499	1247	0	13.02+	335	69.2	6.1	31.5	
11PM-MID	717	0.0	1500	717	0	0.54	23	69.9	42.9	42.6	

+ INDICATES QUEUEING EXCEEDS USER-SPECIFIED MAXIMUM LIMIT

BREAKDOWN DURATION (MINS)	0
RANGE OF QUEUE DELAY - MIN (VEH-H) MAX	0.0
AV BREAKDOWNS PER DAY	0.00
AV QUEUE DELAY/DAY (VEH-H)	0.0
AV TOTAL DELAY/DAY (VEH-H)	0.0

BREAKDOWN DURATION (MINS)	0
RANGE OF QUEUE DELAY - MIN (VEH-H) MAX	0
AV BREAKDOWNS PER DAY	0
AV QUEUE DELAY/DAY (VEH-H)	0
AV TOTAL DELAY/DAY (VEH-H)	0

MAIN ROUTE WITHOUT WORKS	0.0097
MAIN ROUTE WITH WORKS	0.0015
'DIVERSION'	0.0116

PIA: Personal Injury Accidents

ROAD USER COSTS PER DAY	\$209,637
CONGESTED HOURS PER DAY*	18

\*Delays Exceeding User-Specified Maximum

**IH 794: IH 43 TO LINCOLN MEMORIAL DR (MILWAUKEE COUNTY)  
 CONTINUOUS (24 HOUR) 2 LANE CLOSURE  
 NO DIVERSION ROUTE (MAX QUEUE METHOD)**

**OCTOBER**

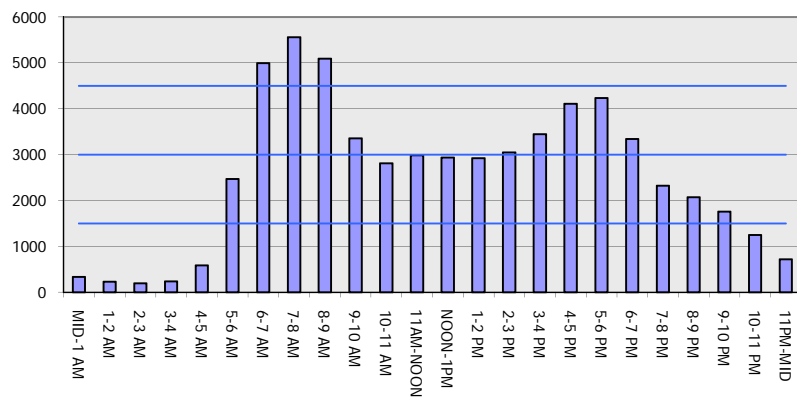
Analyzed for 2009  
 Construction Season

**GRAPHICAL REPRESENTATION OF TRAFFIC MODEL INPUT AND OUTPUT**

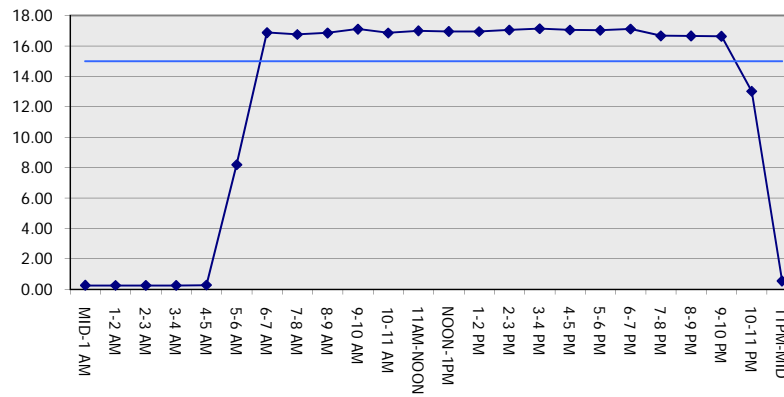
**MON-THUR**

**EASTBOUND DIRECTION**

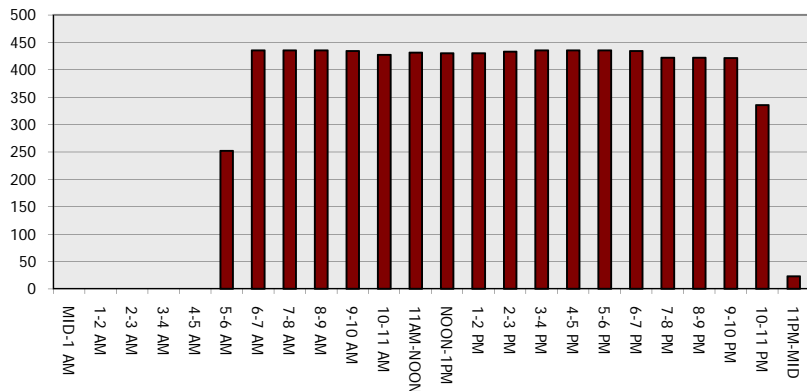
**Main Route - Traffic Demand (Vehicles Per Hour)**



**Main Route Average Delay Per Vehicle (Minutes)**



**Main Route - Average Queue Length (Vehicles)**



**Main Route - Average Speed (MPH)**

