

IH 794: IH 43 TO LINCOLN MEMORIAL DR (MILWAUKEE COUNTY) CONTINUOUS (24 HOUR) CLOSURE NO DIVERSION ROUTE (MAX QUEUE METHOD)	OCTOBER
	Analyzed for 2009 Construction Season

SUMMARY OF TRAFFIC MODEL OUTPUT

MON-THUR WESTBOUND DIRECTION

TIME OF DAY	FLOWS AND CAPACITY IN VEH/HR						AVERAGE SPEEDS IN MPH			
	MAIN ROUTE		SITE CAPA CITY	FLOW		AV.DEL PER VEH (MINS)	AVERAGE QUEUE (VEH)	MAIN ROUTE		SITE
	DEMAND FLOW	PCT HEAVY		MAIN ROUTE	'DIVER TED'			WITHOUT WORK ZONE	WITH WORK ZONE	
MID-1 AM	227	0.0	3000	227	0	0.18	0	70.2	57.9	49.7
1-2 AM	172	0.0	3000	172	0	0.18	0	70.2	57.9	49.7
2-3 AM	139	0.0	3000	139	0	0.18	0	70.2	57.9	49.7
3-4 AM	146	0.0	3000	146	0	0.18	0	70.2	57.9	49.7
4-5 AM	269	0.0	3000	269	0	0.18	0	70.2	57.9	49.7
5-6 AM	797	0.0	3000	797	0	0.18	0	69.7	57.8	49.7
6-7 AM	2037	0.0	3000	2037	0	0.17	0	68.2	57.2	49.7
7-8 AM	2643	0.0	3000	2643	0	0.25	0	67.4	52.6	43.6
8-9 AM	1720	0.0	3000	1720	0	0.17	0	68.6	57.3	49.7
9-10 AM	1197	0.0	3000	1197	0	0.18	0	69.2	57.6	49.7
10-11 AM	1216	0.0	3000	1216	0	0.18	0	69.2	57.6	49.7
11AM-NOON	1405	0.0	3000	1405	0	0.17	0	69.0	57.4	49.7
NOON-1PM	1466	0.0	3000	1466	0	0.17	0	68.9	57.4	49.7
1-2 PM	1668	0.0	3000	1668	0	0.17	0	68.7	57.4	49.7
2-3 PM	2090	0.0	3000	2090	0	0.17	0	68.1	57.2	49.7
3-4 PM	2289	0.0	3000	2289	0	0.17	0	67.9	57.1	49.7
4-5 PM	2267	0.0	3000	2267	0	0.17	0	67.9	57.1	49.7
5-6 PM	2107	0.0	3000	2107	0	0.17	0	68.1	57.2	49.7
6-7 PM	1590	0.0	3000	1590	0	0.17	0	68.7	57.4	49.7
7-8 PM	1160	0.0	3000	1160	0	0.18	0	69.3	57.6	49.7
8-9 PM	1031	0.0	3000	1031	0	0.18	0	69.4	57.6	49.7
9-10 PM	827	0.0	3000	827	0	0.18	0	69.7	57.7	49.7
10-11 PM	539	0.0	3000	539	0	0.18	0	70.0	57.8	49.7
11PM-MID	366	0.0	3000	366	0	0.18	0	70.2	57.9	49.7

----- SITE BREAKDOWN DELAYS -----	
BREAKDOWN DURATION (MINS)	0
RANGE OF QUEUE DELAY - MIN (VEH-H) MAX	0.0
AV BREAKDOWNS PER DAY	0.00
AV QUEUE DELAY/DAY (VEH-H)	0.0
AV TOTAL DELAY/DAY (VEH-H)	0.0

----- SITE ACCIDENT DELAYS -----	
BREAKDOWN DURATION (MINS)	0
RANGE OF QUEUE DELAY - MIN (VEH-H) MAX	0
AV BREAKDOWNS PER DAY	0
AV QUEUE DELAY/DAY (VEH-H)	0
AV TOTAL DELAY/DAY (VEH-H)	0

AVERAGE ACCIDENT NUMBERS (PIA/DAY)	
MAIN ROUTE WITHOUT WORKS	0.0047
MAIN ROUTE WITH WORKS	0.0015
'DIVERSION'	0.0000
PIA: Personal Injury Accidents	
IMPACTS ON ROAD USERS	
ROAD USER COSTS PER DAY	\$1,134
CONGESTED HOURS PER DAY*	0

*Delays Exceeding User-Specified Maximum

**IH 794: IH 43 TO LINCOLN MEMORIAL DR (MILWAUKEE COUNTY)
CONTINUOUS (24 HOUR) CLOSURE
NO DIVERSION ROUTE (MAX QUEUE METHOD)**

OCTOBER

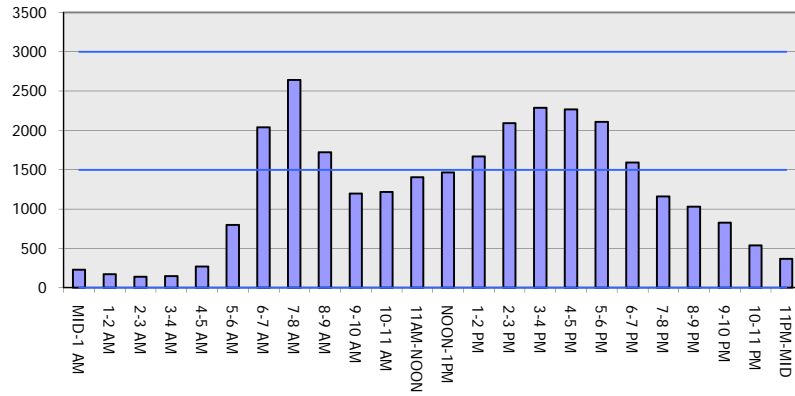
Analyzed for 2009
Construction Season

GRAPHICAL REPRESENTATION OF TRAFFIC MODEL INPUT AND OUTPUT

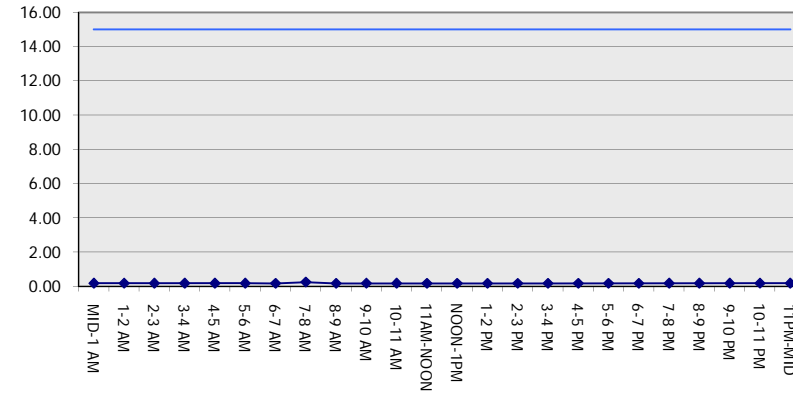
MON-THUR

WESTBOUND DIRECTION

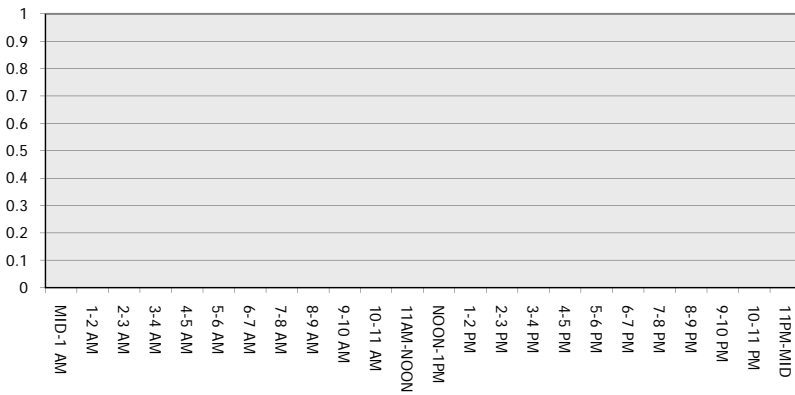
Main Route - Traffic Demand (Vehicles Per Hour)



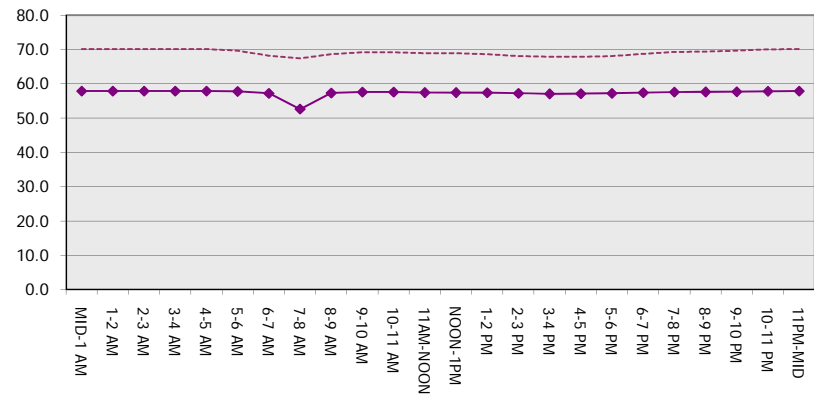
Main Route Average Delay Per Vehicle (Minutes)



Main Route - Average Queue Length (Vehicles)



Main Route - Average Speed (MPH)



**IH 794: IH 43 TO LINCOLN MEMORIAL DR (MILWAUKEE COUNTY)
CONTINUOUS (24 HOUR) CLOSURE
NO DIVERSION ROUTE (MAX QUEUE METHOD)**

OCTOBER
Analyzed for 2009
Construction Season

SUMMARY OF TRAFFIC MODEL OUTPUT
MON-THUR EASTBOUND DIRECTION

TIME OF DAY	FLOWS AND CAPACITY IN VEH/HR							AVERAGE SPEEDS IN MPH		
	MAIN ROUTE		SITE CAPA CITY	FLOW		AV.DEL PER VEH (MINS)	AVERAGE QUEUE (VEH)	MAIN ROUTE		SITE
	DEMAND FLOW	PCT HEAVY		MAIN ROUTE	'DIVER TED'			WITHOUT WORK ZONE	WITH WORK ZONE	
MID-1 AM	337	0.0	3000	337	0	0.18	0	70.2	57.9	49.7
1-2 AM	232	0.0	3000	232	0	0.18	0	70.2	57.9	49.7
2-3 AM	193	0.0	3000	193	0	0.18	0	70.2	57.9	49.7
3-4 AM	240	0.0	3000	240	0	0.18	0	70.2	57.9	49.7
4-5 AM	587	0.0	3000	587	0	0.18	0	70.0	57.8	49.7
5-6 AM	2471	0.0	2999	2471	0	0.30	2	67.7	50.6	43.5
6-7 AM	4996	0.0	3000	3885	1110	11.77+	693	56.7	9.4	37.3
7-8 AM	5557	0.0	2999	3000	2557	17.76+	995	52.9	8.1	37.3
8-9 AM	5091	0.0	3000	3071	2021	17.75+	984	56.1	8.1	37.3
9-10 AM	3358	0.0	3000	2921	437	16.84+	908	66.6	8.3	37.3
10-11 AM	2813	0.0	2999	2813	0	14.98+	805	67.3	8.5	37.3
11AM-NOON	2988	0.0	3000	2988	0	12.90	690	67.0	8.8	37.3
NOON-1PM	2936	0.0	2999	2936	0	12.31	658	67.1	8.9	37.3
1-2 PM	2925	0.0	2999	2925	0	10.94	582	67.1	9.3	37.3
2-3 PM	3049	0.0	3000	3049	0	10.47	557	66.9	9.4	37.3
3-4 PM	3449	0.0	3000	3327	123	14.33+	774	66.4	8.6	37.3
4-5 PM	4112	0.0	2999	3011	1101	17.02+	926	62.8	8.2	37.3
5-6 PM	4238	0.0	3000	2990	1248	17.24+	940	61.9	8.2	37.3
6-7 PM	3343	0.0	3000	2992	351	16.91+	912	66.6	8.3	37.3
7-8 PM	2321	0.0	2999	2321	0	11.11+	618	67.9	9.5	39.7
8-9 PM	2071	0.0	3000	2071	0	0.40	33	68.2	47.0	49.7
9-10 PM	1758	0.0	3000	1758	0	0.17	0	68.6	57.3	49.7
10-11 PM	1247	0.0	3000	1247	0	0.18	0	69.2	57.6	49.7
11PM-MID	717	0.0	3000	717	0	0.18	0	69.9	57.8	49.7

+ INDICATES QUEUEING EXCEEDS USER-SPECIFIED MAXIMUM LIMIT

----- SITE BREAKDOWN DELAYS -----	
BREAKDOWN DURATION (MINS)	0
RANGE OF QUEUE DELAY - MIN (VEH-H) MAX	0.0
AV BREAKDOWNS PER DAY	0.00
AV QUEUE DELAY/DAY (VEH-H)	0.0
AV TOTAL DELAY/DAY (VEH-H)	0.0

----- SITE ACCIDENT DELAYS -----	
BREAKDOWN DURATION (MINS)	0
RANGE OF QUEUE DELAY - MIN (VEH-H) MAX	0
AV BREAKDOWNS PER DAY	0
AV QUEUE DELAY/DAY (VEH-H)	0
AV TOTAL DELAY/DAY (VEH-H)	0

AVERAGE ACCIDENT NUMBERS (PIA/DAY)	
MAIN ROUTE WITHOUT WORKS	0.0097
MAIN ROUTE WITH WORKS	0.0026
'DIVERSION'	0.0033

PIA: Personal Injury Accidents

ECONOMIC IMPACT ON ROAD USERS	
ROAD USER COSTS PER DAY	\$163,673
CONGESTED HOURS PER DAY*	10

*Delays Exceeding User-Specified Maximum

**IH 794: IH 43 TO LINCOLN MEMORIAL DR (MILWAUKEE COUNTY)
CONTINUOUS (24 HOUR) CLOSURE
NO DIVERSION ROUTE (MAX QUEUE METHOD)**

OCTOBER

Analyzed for 2009
Construction Season

GRAPHICAL REPRESENTATION OF TRAFFIC MODEL INPUT AND OUTPUT

MON-THUR EASTBOUND DIRECTION

