

IH 794: IH 43 TO LINCOLN MEMORIAL DR (MILWAUKEE COUNTY) CONTINUOUS (24 HOUR) CLOSURE NO DIVERSION ROUTE (MAX QUEUE METHOD)	OCTOBER
	Analyzed for 2009 Construction Season

SUMMARY OF TRAFFIC MODEL OUTPUT

FRIDAY WESTBOUND DIRECTION

TIME OF DAY	FLOWS AND CAPACITY IN VEH/HR						AVERAGE SPEEDS IN MPH			
	MAIN ROUTE		SITE CAPA CITY	FLOW		AV.DEL PER VEH (MINS)	AVERAGE QUEUE (VEH)	MAIN ROUTE		SITE
	DEMAND FLOW	PCT HEAVY		MAIN ROUTE	'DIVER TED'			WITHOUT WORK ZONE	WITH WORK ZONE	
MID-1 AM	320	0.0	3000	320	0	0.18	0	70.2	57.9	49.7
1-2 AM	257	0.0	3000	257	0	0.18	0	70.2	57.9	49.7
2-3 AM	184	0.0	3000	184	0	0.18	0	70.2	57.9	49.7
3-4 AM	167	0.0	3000	167	0	0.18	0	70.2	57.9	49.7
4-5 AM	267	0.0	3000	267	0	0.18	0	70.2	57.9	49.7
5-6 AM	779	0.0	3000	779	0	0.18	0	69.7	57.8	49.7
6-7 AM	2002	0.0	3000	2002	0	0.17	0	68.2	57.2	49.7
7-8 AM	2694	0.0	3000	2694	0	0.27	0	67.4	51.8	42.5
8-9 AM	1811	0.0	3000	1811	0	0.17	0	68.5	57.3	49.7
9-10 AM	1442	0.0	3000	1442	0	0.17	0	68.9	57.4	49.7
10-11 AM	1489	0.0	3000	1489	0	0.17	0	68.9	57.4	49.7
11AM-NOON	1730	0.0	3000	1730	0	0.17	0	68.6	57.3	49.7
NOON-1PM	1727	0.0	3000	1727	0	0.17	0	68.6	57.3	49.7
1-2 PM	1812	0.0	3000	1812	0	0.17	0	68.5	57.3	49.7
2-3 PM	2150	0.0	3000	2150	0	0.17	0	68.1	57.1	49.7
3-4 PM	2214	0.0	3000	2214	0	0.17	0	68.0	57.1	49.7
4-5 PM	2121	0.0	3000	2121	0	0.17	0	68.1	57.2	49.7
5-6 PM	2023	0.0	3000	2023	0	0.17	0	68.2	57.2	49.7
6-7 PM	1469	0.0	3000	1469	0	0.17	0	68.9	57.4	49.7
7-8 PM	974	0.0	3000	974	0	0.18	0	69.6	57.6	49.7
8-9 PM	868	0.0	3000	868	0	0.18	0	69.7	57.7	49.7
9-10 PM	1040	0.0	3000	1040	0	0.18	0	69.4	57.6	49.7
10-11 PM	824	0.0	3000	824	0	0.18	0	69.7	57.7	49.7
11PM-MID	669	0.0	3000	669	0	0.18	0	69.9	57.8	49.7

----- SITE BREAKDOWN DELAYS -----	
BREAKDOWN DURATION (MINS)	0
RANGE OF QUEUE DELAY - MIN (VEH-H) MAX	0.0
AV BREAKDOWNS PER DAY	0.00
AV QUEUE DELAY/DAY (VEH-H)	0.0
AV TOTAL DELAY/DAY (VEH-H)	0.0

----- SITE ACCIDENT DELAYS -----	
BREAKDOWN DURATION (MINS)	0
RANGE OF QUEUE DELAY - MIN (VEH-H) MAX	0
AV BREAKDOWNS PER DAY	0
AV QUEUE DELAY/DAY (VEH-H)	0
AV TOTAL DELAY/DAY (VEH-H)	0

AVERAGE ACCIDENT NUMBERS (PIA/DAY)	
MAIN ROUTE WITHOUT WORKS	0.0049
MAIN ROUTE WITH WORKS	0.0016
'DIVERSION'	0.0000
PIA: Personal Injury Accidents	
IMPACTS ON ROAD USERS	
ROAD USER COSTS PER DAY	\$1,250
CONGESTED HOURS PER DAY*	0

*Delays Exceeding User-Specified Maximum

**IH 794: IH 43 TO LINCOLN MEMORIAL DR (MILWAUKEE COUNTY)
CONTINUOUS (24 HOUR) CLOSURE
NO DIVERSION ROUTE (MAX QUEUE METHOD)**

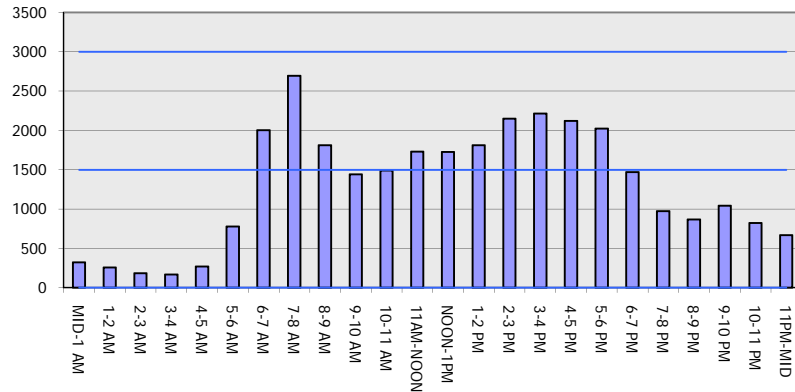
OCTOBER

Analyzed for 2009
Construction Season

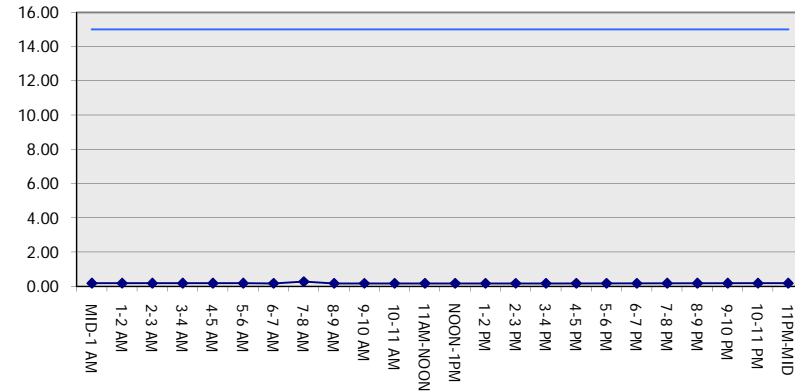
GRAPHICAL REPRESENTATION OF TRAFFIC MODEL INPUT AND OUTPUT

FRIDAY WESTBOUND DIRECTION

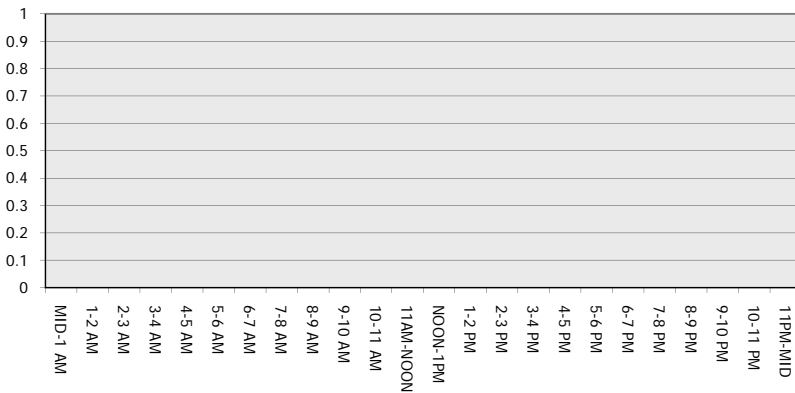
Main Route - Traffic Demand (Vehicles Per Hour)



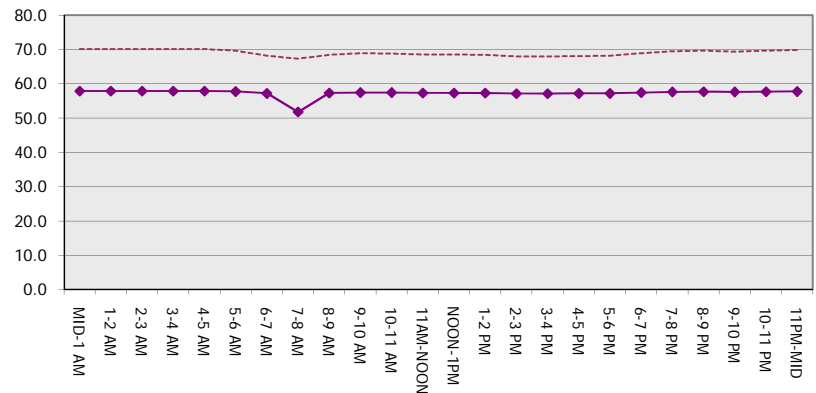
Main Route Average Delay Per Vehicle (Minutes)



Main Route - Average Queue Length (Vehicles)



Main Route - Average Speed (MPH)



IH 794: IH 43 TO LINCOLN MEMORIAL DR (MILWAUKEE COUNTY) CONTINUOUS (24 HOUR) CLOSURE NO DIVERSION ROUTE (MAX QUEUE METHOD)	OCTOBER
	Analyzed for 2009 Construction Season

SUMMARY OF TRAFFIC MODEL OUTPUT

FRIDAY EASTBOUND DIRECTION

TIME OF DAY	FLOWS AND CAPACITY IN VEH/HR						AVERAGE SPEEDS IN MPH			
	MAIN ROUTE		SITE CAPA CITY	FLOW		AV.DEL PER VEH (MINS)	AVERAGE QUEUE (VEH)	MAIN ROUTE		SITE
	DEMAND FLOW	PCT HEAVY		MAIN ROUTE	'DIVER TED'			WITHOUT WORK ZONE	WITH WORK ZONE	
MID-1 AM	442	0.0	3000	442	0	0.18	0	70.2	57.9	49.7
1-2 AM	289	0.0	3000	289	0	0.18	0	70.2	57.9	49.7
2-3 AM	218	0.0	3000	218	0	0.18	0	70.2	57.9	49.7
3-4 AM	275	0.0	3000	275	0	0.18	0	70.2	57.9	49.7
4-5 AM	568	0.0	3000	568	0	0.18	0	70.0	57.8	49.7
5-6 AM	2409	0.0	2999	2409	0	0.24	0	67.8	53.2	44.5
6-7 AM	4300	0.0	2999	4067	233	8.76+	535	61.5	10.6	37.3
7-8 AM	4823	0.0	2999	2921	1903	17.93+	989	57.9	8.1	37.3
8-9 AM	4476	0.0	3000	2954	1522	17.79+	975	60.3	8.1	37.3
9-10 AM	3106	0.0	3000	2920	185	16.76+	903	66.9	8.3	37.3
10-11 AM	2641	0.0	2999	2641	0	12.72+	684	67.4	8.9	37.3
11AM-NOON	3026	0.0	3000	3026	0	9.56	506	66.9	9.7	37.3
NOON-1PM	2930	0.0	2999	2930	0	9.24	489	67.1	9.8	37.3
1-2 PM	3173	0.0	3000	3173	0	10.02	533	66.8	9.6	37.3
2-3 PM	3291	0.0	3000	3291	0	14.04+	756	66.6	8.6	37.3
3-4 PM	3818	0.0	2999	2998	821	16.94+	917	64.8	8.2	37.3
4-5 PM	4305	0.0	2999	3044	1262	17.25+	942	61.4	8.2	37.3
5-6 PM	4676	0.0	2999	3031	1644	18.00+	990	58.9	8.1	37.3
6-7 PM	3910	0.0	3000	2927	983	17.15+	930	64.1	8.2	37.3
7-8 PM	2898	0.0	3000	2845	53	16.26+	875	67.1	8.3	37.3
8-9 PM	2309	0.0	2999	2309	0	7.45	434	67.9	11.2	40.7
9-10 PM	2473	0.0	3000	2473	0	0.26	5	67.7	52.2	47.3
10-11 PM	1974	0.0	3000	1974	0	0.17	0	68.3	57.3	49.7
11PM-MID	1332	0.0	3000	1332	0	0.17	0	69.1	57.5	49.7

+ INDICATES QUEUEING EXCEEDS USER-SPECIFIED MAXIMUM LIMIT

----- SITE BREAKDOWN DELAYS -----	
BREAKDOWN DURATION (MINS)	0
RANGE OF QUEUE DELAY - MIN (VEH-H) MAX	0.0
AV BREAKDOWNS PER DAY	0.00
AV QUEUE DELAY/DAY (VEH-H)	0.0
AV TOTAL DELAY/DAY (VEH-H)	0.0

----- SITE ACCIDENT DELAYS -----	
BREAKDOWN DURATION (MINS)	0
RANGE OF QUEUE DELAY - MIN (VEH-H) MAX	0
AV BREAKDOWNS PER DAY	0
AV QUEUE DELAY/DAY (VEH-H)	0
AV TOTAL DELAY/DAY (VEH-H)	0

AVERAGE ACCIDENT NUMBERS (PIA/DAY)	
MAIN ROUTE WITHOUT WORKS	0.0101
MAIN ROUTE WITH WORKS	0.0028
'DIVERSION'	0.0032

PIA: Personal Injury Accidents

ECONOMIC IMPACT ON ROAD USERS	
ROAD USER COSTS PER DAY	\$173,844
CONGESTED HOURS PER DAY*	11

*Delays Exceeding User-Specified Maximum

**IH 794: IH 43 TO LINCOLN MEMORIAL DR (MILWAUKEE COUNTY)
CONTINUOUS (24 HOUR) CLOSURE
NO DIVERSION ROUTE (MAX QUEUE METHOD)**

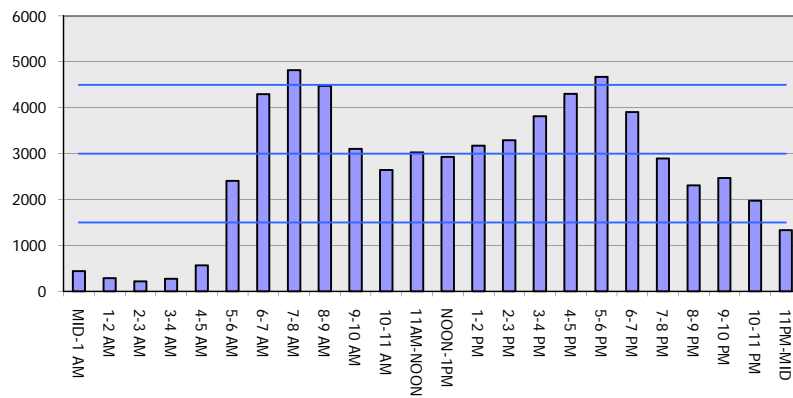
OCTOBER

Analyzed for 2009
Construction Season

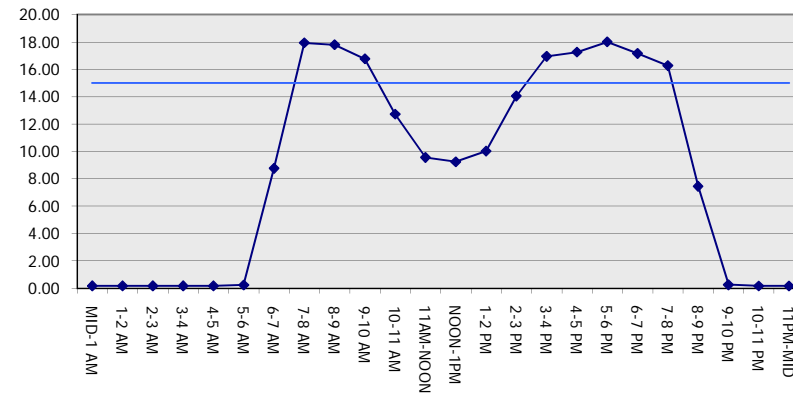
GRAPHICAL REPRESENTATION OF TRAFFIC MODEL INPUT AND OUTPUT

FRIDAY EASTBOUND DIRECTION

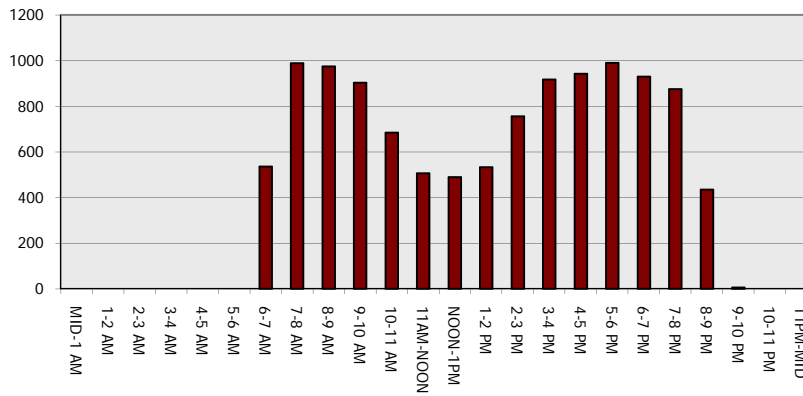
Main Route - Traffic Demand (Vehicles Per Hour)



Main Route Average Delay Per Vehicle (Minutes)



Main Route - Average Queue Length (Vehicles)



Main Route - Average Speed (MPH)

