

<b>IH 794: IH 43 TO LINCOLN MEMORIAL DR (MILWAUKEE COUNTY)                  CONTINUOUS (24 HOUR) 2 LANE CLOSURE                  NO DIVERSION ROUTE (MAX QUEUE METHOD)</b>	<b>AUGUST</b>
	Analyzed for 2009 Construction Season

**SUMMARY OF TRAFFIC MODEL OUTPUT**

MON-THUR                      WESTBOUND DIRECTION

TIME OF DAY	FLOWS AND CAPACITY IN VEH/HR							AVERAGE SPEEDS IN MPH			
	MAIN ROUTE		SITE CAPA CITY	FLOW		AV.DEL PER VEH (MINS)	AVERAGE QUEUE (VEH)	MAIN ROUTE		SITE	
	DEMAND FLOW	PCT HEAVY		MAIN ROUTE	'DIVER TED'			WITHOUT WORK ZONE	WITH WORK ZONE		
MID-1 AM	537	0.0	1500	537	0	0.27	0	70.0	53.2	43.3	
1-2 AM	399	0.0	1500	399	0	0.26	0	70.2	53.7	43.9	
2-3 AM	257	0.0	1500	257	0	0.25	0	70.2	54.0	44.5	
3-4 AM	260	0.0	1500	260	0	0.26	0	70.2	54.0	44.5	
4-5 AM	586	0.0	1500	586	0	0.27	0	70.0	53.0	43.2	
5-6 AM	1745	0.0	1499	1745	0	1.42	79	68.6	26.9	32.5	
6-7 AM	3730	0.0	1499	1526	2205	16.96+	432	65.4	5.4	32.4	
7-8 AM	4313	0.0	1500	1500	2813	16.96+	435	61.4	5.3	32.5	
8-9 AM	2959	0.0	1500	1547	1412	16.90+	428	67.1	5.4	30.8	
9-10 AM	2418	0.0	1500	1507	911	16.69+	423	67.8	5.4	30.8	
10-11 AM	2592	0.0	1500	1514	1079	16.73+	424	67.5	5.4	30.8	
11AM-NOON	2983	0.0	1500	1516	1468	16.99+	431	67.0	5.4	30.8	
NOON-1PM	2985	0.0	1500	1503	1481	17.00+	431	67.0	5.3	30.8	
1-2 PM	3312	0.0	1499	1502	1810	17.13+	435	66.6	5.3	30.8	
2-3 PM	4516	0.0	1500	1500	3016	16.98+	435	60.0	5.3	30.8	
3-4 PM	5109	0.0	1500	1500	3609	16.86+	435	56.0	5.3	30.8	
4-5 PM	5126	0.0	1500	1500	3626	16.85+	435	55.8	5.3	30.8	
5-6 PM	4488	0.0	1500	1500	2988	16.98+	435	60.2	5.3	30.8	
6-7 PM	3107	0.0	1500	1497	1609	17.01+	431	66.9	5.3	30.8	
7-8 PM	2365	0.0	1500	1499	867	16.68+	422	67.8	5.4	30.8	
8-9 PM	2196	0.0	1499	1499	697	16.67+	422	68.0	5.4	30.8	
9-10 PM	1967	0.0	1499	1499	467	16.65+	421	68.3	5.4	30.8	
10-11 PM	1455	0.0	1500	1411	44	15.89+	402	68.9	5.5	30.8	
11PM-MID	913	0.0	1499	913	0	1.66	117	69.6	25.5	38.8	

+ INDICATES QUEUEING EXCEEDS USER-SPECIFIED MAXIMUM LIMIT

BREAKDOWN DURATION (MINS)	0
RANGE OF QUEUE DELAY - MIN (VEH-H) MAX	0.0
AV BREAKDOWNS PER DAY	0.00
AV QUEUE DELAY/DAY (VEH-H)	0.0
AV TOTAL DELAY/DAY (VEH-H)	0.0

BREAKDOWN DURATION (MINS)	0
RANGE OF QUEUE DELAY - MIN (VEH-H) MAX	0
AV BREAKDOWNS PER DAY	0
AV QUEUE DELAY/DAY (VEH-H)	0
AV TOTAL DELAY/DAY (VEH-H)	0

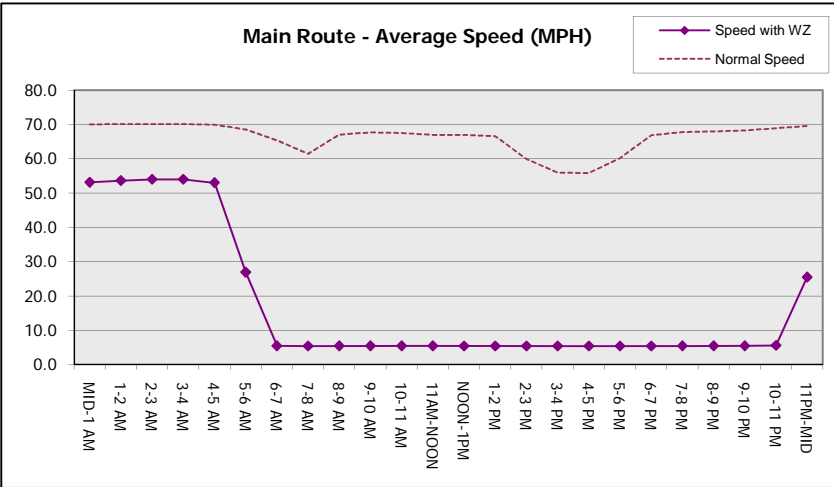
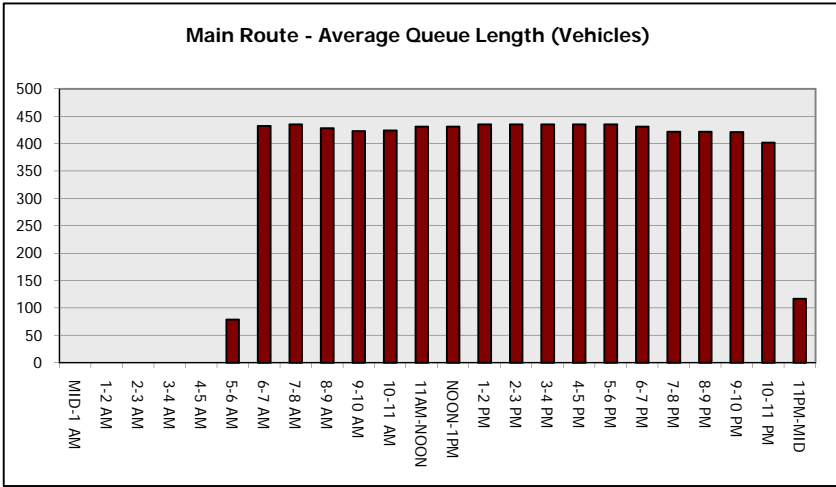
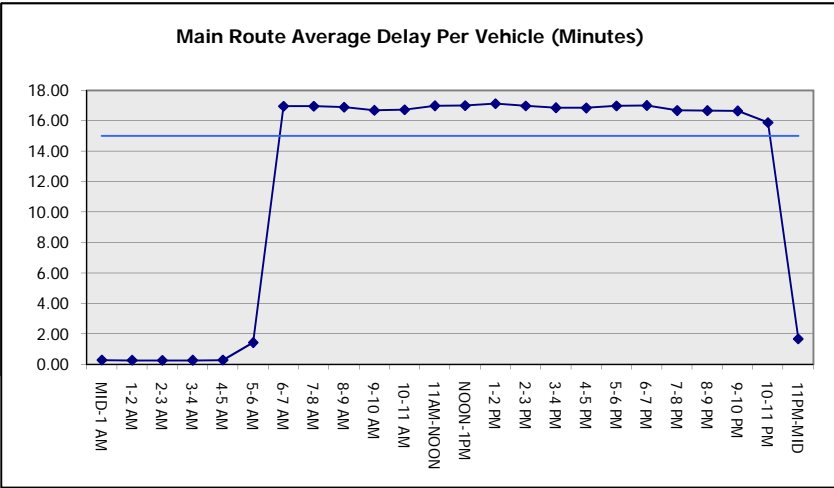
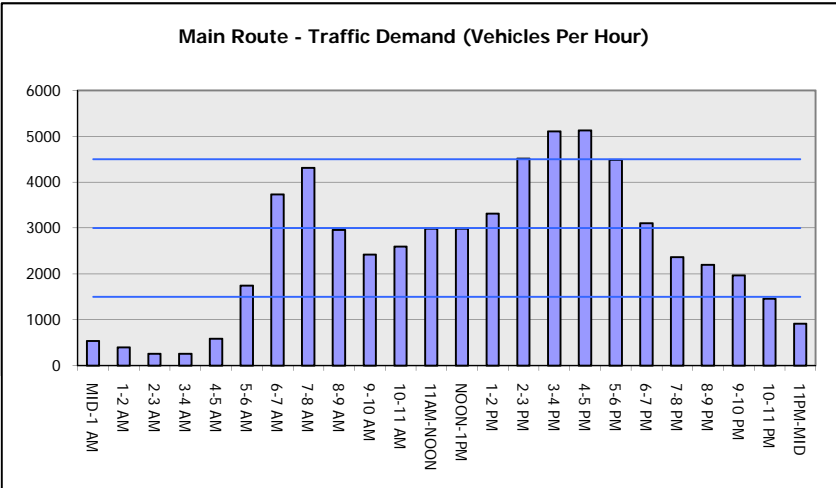
MAIN ROUTE WITHOUT WORKS	0.0096
MAIN ROUTE WITH WORKS	0.0015
'DIVERSION'	0.0111
<small>PIA: Personal Injury Accidents</small>	
<b>IMPACTS ON ROAD USERS</b>	
ROAD USER COSTS PER DAY	\$204,784
CONGESTED HOURS PER DAY*	17

\*Delays Exceeding User-Specified Maximum

**IH 794: IH 43 TO LINCOLN MEMORIAL DR (MILWAUKEE COUNTY)  
CONTINUOUS (24 HOUR) 2 LANE CLOSURE  
NO DIVERSION ROUTE (MAX QUEUE METHOD)**

**AUGUST**  
Analyzed for 2009  
Construction Season

**GRAPHICAL REPRESENTATION OF TRAFFIC MODEL INPUT AND OUTPUT**  
**MON-THUR WESTBOUND DIRECTION**



<b>IH 794: IH 43 TO LINCOLN MEMORIAL DR (MILWAUKEE COUNTY)</b> <b>CONTINUOUS (24 HOUR) 2 LANE CLOSURE</b> <b>NO DIVERSION ROUTE (MAX QUEUE METHOD)</b>	<b>AUGUST</b>
	Analyzed for 2009 Construction Season

**SUMMARY OF TRAFFIC MODEL OUTPUT**

MON-THUR                      EASTBOUND DIRECTION

TIME OF DAY	FLOWS AND CAPACITY IN VEH/HR							AVERAGE SPEEDS IN MPH		
	MAIN ROUTE		SITE CAPA CITY	FLOW		AV.DEL PER VEH (MINS)	AVERAGE QUEUE (VEH)	MAIN ROUTE		SITE
	DEMAND FLOW	PCT HEAVY		MAIN ROUTE	'DIVER TED'			WITHOUT WORK ZONE	WITH WORK ZONE	
MID-1 AM	367	0.0	1500	367	0	0.26	0	70.2	53.7	44.0
1-2 AM	244	0.0	1500	244	0	0.25	0	70.2	54.1	44.5
2-3 AM	205	0.0	1500	205	0	0.25	0	70.2	54.2	44.6
3-4 AM	287	0.0	1500	287	0	0.26	0	70.2	54.0	44.3
4-5 AM	823	0.0	1500	823	0	0.29	0	69.7	52.3	42.3
5-6 AM	2999	0.0	1499	1977	1023	12.92+	337	67.0	6.1	30.8
6-7 AM	5105	0.0	1499	1500	3605	16.86+	435	56.0	5.3	30.8
7-8 AM	5464	0.0	1500	1500	3964	16.78+	435	53.5	5.3	30.8
8-9 AM	4493	0.0	1500	1500	2993	16.98+	435	60.2	5.3	30.8
9-10 AM	3195	0.0	1499	1473	1722	17.05+	433	66.8	5.3	30.8
10-11 AM	2969	0.0	1499	1485	1483	17.00+	431	67.1	5.3	30.8
11AM-NOON	3097	0.0	1499	1500	1598	17.10+	434	66.9	5.3	30.8
NOON-1PM	3147	0.0	1499	1501	1647	17.14+	435	66.8	5.3	30.8
1-2 PM	3097	0.0	1500	1499	1598	17.10+	434	66.9	5.3	30.8
2-3 PM	3155	0.0	1499	1500	1655	17.13+	434	66.8	5.3	30.8
3-4 PM	3514	0.0	1500	1500	2014	17.14+	435	66.4	5.3	30.8
4-5 PM	4089	0.0	1500	1500	2589	17.06+	435	62.9	5.3	30.8
5-6 PM	4076	0.0	1500	1500	2576	17.06+	435	63.0	5.3	30.8
6-7 PM	3299	0.0	1500	1500	1799	17.12+	434	66.6	5.3	30.8
7-8 PM	2513	0.0	1500	1495	1018	16.70+	423	67.6	5.4	30.8
8-9 PM	2263	0.0	1499	1499	764	16.67+	422	67.9	5.4	30.8
9-10 PM	1985	0.0	1499	1499	486	16.66+	421	68.2	5.4	30.8
10-11 PM	1445	0.0	1500	1399	46	15.77+	399	68.9	5.5	30.8
11PM-MID	819	0.0	1499	819	0	1.30	97	69.7	29.1	40.4

+ INDICATES QUEUEING EXCEEDS USER-SPECIFIED MAXIMUM LIMIT

BREAKDOWN DURATION (MINS)	0
RANGE OF QUEUE DELAY - MIN (VEH-H) MAX	0.0
AV BREAKDOWNS PER DAY	0.00
AV QUEUE DELAY/DAY (VEH-H)	0.0
AV TOTAL DELAY/DAY (VEH-H)	0.0

BREAKDOWN DURATION (MINS)	0
RANGE OF QUEUE DELAY - MIN (VEH-H) MAX	0
AV BREAKDOWNS PER DAY	0
AV QUEUE DELAY/DAY (VEH-H)	0
AV TOTAL DELAY/DAY (VEH-H)	0

MAIN ROUTE WITHOUT WORKS	0.0100
MAIN ROUTE WITH WORKS	0.0015
'DIVERSION'	0.0120

PIA: Personal Injury Accidents

ROAD USER COSTS PER DAY	\$218,200
CONGESTED HOURS PER DAY*	18

\*Delays Exceeding User-Specified Maximum

**IH 794: IH 43 TO LINCOLN MEMORIAL DR (MILWAUKEE COUNTY)  
 CONTINUOUS (24 HOUR) 2 LANE CLOSURE  
 NO DIVERSION ROUTE (MAX QUEUE METHOD)**

**AUGUST**

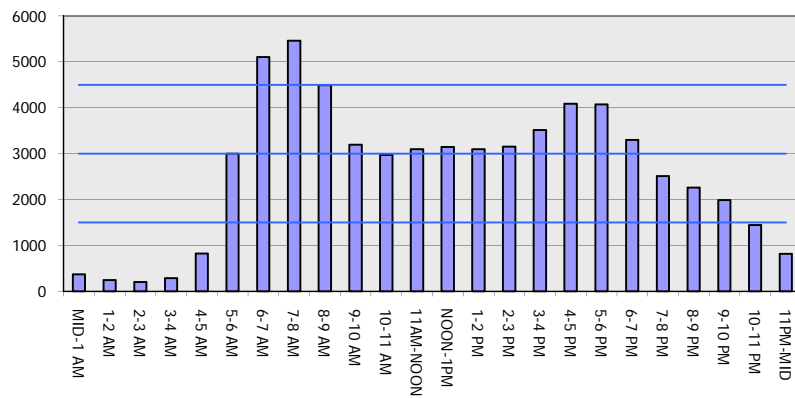
Analyzed for 2009  
 Construction Season

**GRAPHICAL REPRESENTATION OF TRAFFIC MODEL INPUT AND OUTPUT**

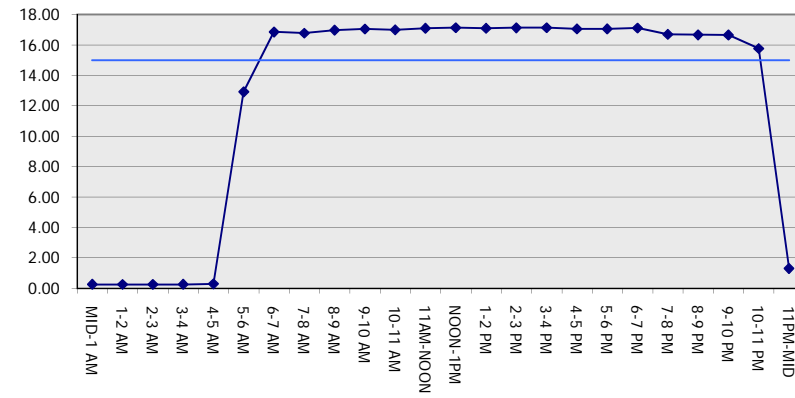
**MON-THUR**

**EASTBOUND DIRECTION**

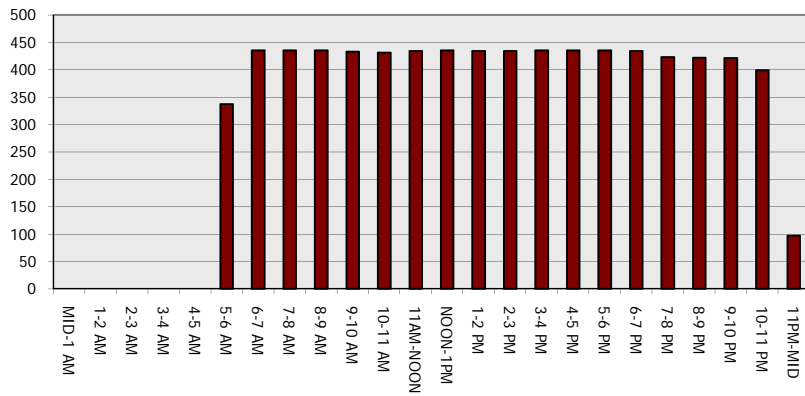
**Main Route - Traffic Demand (Vehicles Per Hour)**



**Main Route Average Delay Per Vehicle (Minutes)**



**Main Route - Average Queue Length (Vehicles)**



**Main Route - Average Speed (MPH)**

