

<b>IH 794: IH 43 TO LINCOLN MEMORIAL DR (MILWAUKEE COUNTY)                  CONTINUOUS (24 HOUR) 2 LANE CLOSURE                  NO DIVERSION ROUTE (MAX QUEUE METHOD)</b>	<b>AUGUST</b>
	Analyzed for 2009 Construction Season

**SUMMARY OF TRAFFIC MODEL OUTPUT**

FRIDAY WESTBOUND DIRECTION

TIME OF DAY	FLOWS AND CAPACITY IN VEH/HR						AVERAGE SPEEDS IN MPH				
	MAIN ROUTE		SITE CAPA CITY	FLOW		AV.DEL PER VEH (MINS)	AVERAGE QUEUE (VEH)	MAIN ROUTE		SITE	
	DEMAND FLOW	PCT HEAVY		MAIN ROUTE	'DIVER TED'			WITHOUT WORK ZONE	WITH WORK ZONE		
MID-1 AM	889	0.0	1499	889	0	2.66	181	69.6	19.6	37.6	
1-2 AM	823	0.0	1500	823	0	0.29	0	69.7	52.3	42.3	
2-3 AM	449	0.0	1500	449	0	0.27	0	70.2	53.5	43.7	
3-4 AM	347	0.0	1500	347	0	0.26	0	70.2	53.8	44.1	
4-5 AM	569	0.0	1500	569	0	0.27	0	70.0	53.1	43.2	
5-6 AM	1501	0.0	1499	1501	0	1.04	43	68.9	31.5	35.3	
6-7 AM	3326	0.0	1500	1819	1507	15.97+	409	66.6	5.5	30.8	
7-8 AM	4266	0.0	1499	1500	2766	17.02+	435	61.7	5.3	30.8	
8-9 AM	3159	0.0	1499	1460	1699	17.01+	432	66.8	5.3	30.8	
9-10 AM	2730	0.0	1499	1480	1251	16.81+	426	67.3	5.4	30.8	
10-11 AM	3037	0.0	1499	1500	1537	17.04+	432	66.9	5.3	30.8	
11AM-NOON	3727	0.0	1500	1500	2227	17.12+	435	65.4	5.3	30.8	
NOON-1PM	3812	0.0	1500	1500	2312	17.10+	435	64.8	5.3	30.8	
1-2 PM	3953	0.0	1500	1500	2453	17.08+	435	63.8	5.3	30.8	
2-3 PM	4516	0.0	1500	1500	3016	16.98+	435	60.0	5.3	30.8	
3-4 PM	4822	0.0	1500	1500	3322	16.92+	435	57.9	5.3	30.8	
4-5 PM	4886	0.0	1500	1500	3386	16.91+	435	57.5	5.3	30.8	
5-6 PM	3989	0.0	1500	1500	2489	17.07+	435	63.6	5.3	30.8	
6-7 PM	2858	0.0	1500	1498	1360	16.90+	428	67.2	5.4	30.8	
7-8 PM	2158	0.0	1500	1499	659	16.66+	422	68.1	5.4	30.8	
8-9 PM	2166	0.0	1499	1499	666	16.67+	422	68.1	5.4	30.8	
9-10 PM	2353	0.0	1499	1499	853	16.68+	422	67.8	5.4	30.8	
10-11 PM	2442	0.0	1499	1499	943	16.68+	422	67.7	5.4	30.8	
11PM-MID	2049	0.0	1500	1499	549	16.66+	421	68.2	5.4	30.8	

+ INDICATES QUEUEING EXCEEDS USER-SPECIFIED MAXIMUM LIMIT

*----- SITE BREAKDOWN DELAYS -----*	
BREAKDOWN DURATION (MINS)	0
RANGE OF QUEUE DELAY - MIN	0.0
(VEH-H) MAX	0.0
AV BREAKDOWNS PER DAY	0.00
AV QUEUE DELAY/DAY (VEH-H)	0.0
AV TOTAL DELAY/DAY (VEH-H)	0.0

*----- SITE ACCIDENT DELAYS -----*	
BREAKDOWN DURATION (MINS)	0
RANGE OF QUEUE DELAY - MIN	0
(VEH-H) MAX	0
AV BREAKDOWNS PER DAY	0
AV QUEUE DELAY/DAY (VEH-H)	0
AV TOTAL DELAY/DAY (VEH-H)	0

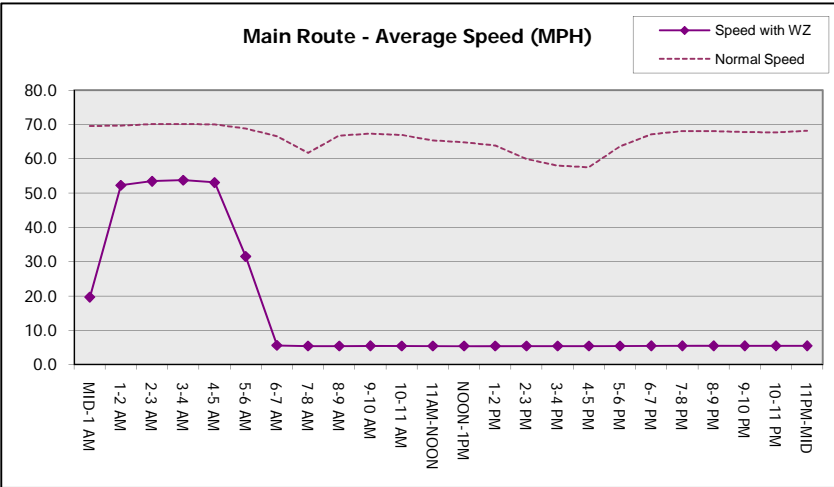
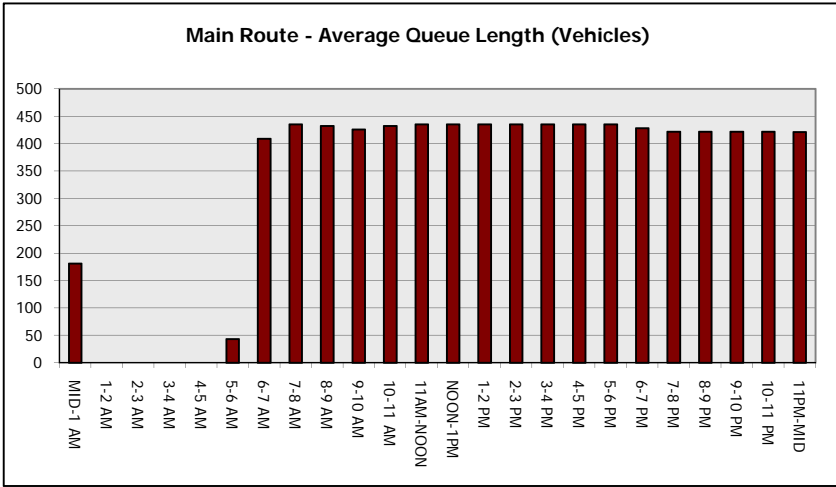
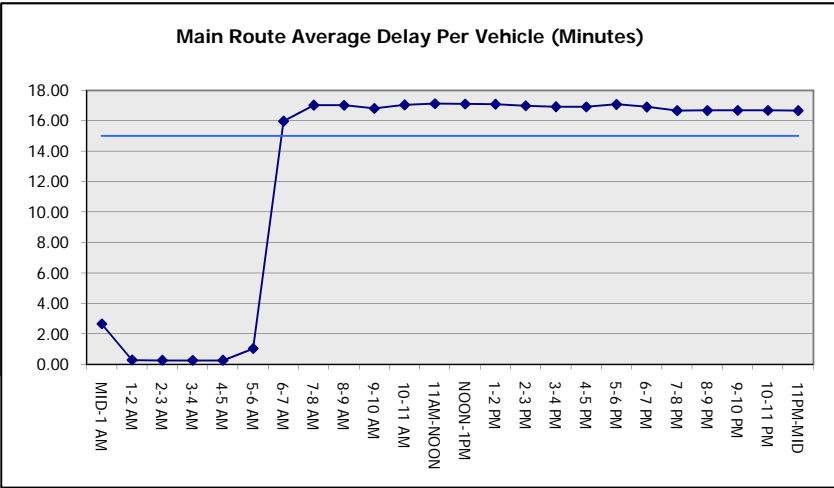
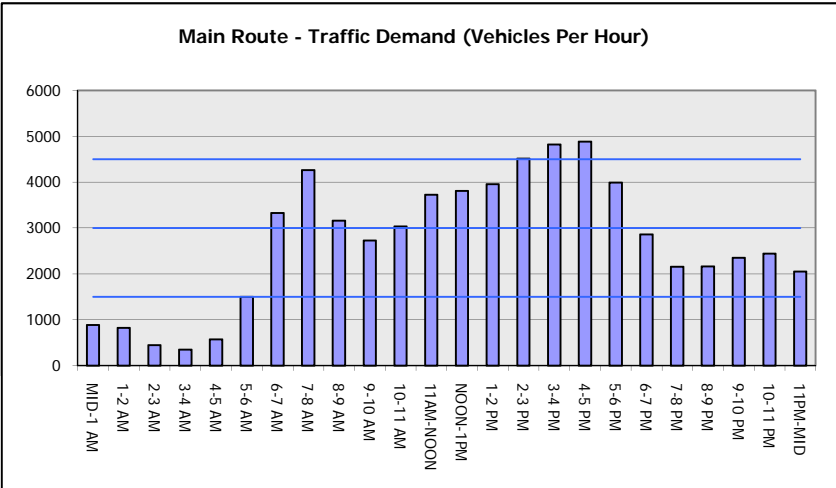
AVERAGE ACCIDENT NUMBERS (PIA/DAY)	
MAIN ROUTE WITHOUT WORKS	0.0103
MAIN ROUTE WITH WORKS	0.0016
'DIVERSION'	0.0122
PIA: Personal Injury Accidents	
<b>IMPACTS ON ROAD USERS</b>	
ROAD USER COSTS PER DAY	\$228,129
CONGESTED HOURS PER DAY*	18

\*Delays Exceeding User-Specified Maximum

**IH 794: IH 43 TO LINCOLN MEMORIAL DR (MILWAUKEE COUNTY)  
CONTINUOUS (24 HOUR) 2 LANE CLOSURE  
NO DIVERSION ROUTE (MAX QUEUE METHOD)**

**AUGUST**  
Analyzed for 2009  
Construction Season

**GRAPHICAL REPRESENTATION OF TRAFFIC MODEL INPUT AND OUTPUT**  
**FRIDAY WESTBOUND DIRECTION**



<b>IH 794: IH 43 TO LINCOLN MEMORIAL DR (MILWAUKEE COUNTY)</b> <b>CONTINUOUS (24 HOUR) 2 LANE CLOSURE</b> <b>NO DIVERSION ROUTE (MAX QUEUE METHOD)</b>	<b>AUGUST</b>
	Analyzed for 2009 Construction Season

**SUMMARY OF TRAFFIC MODEL OUTPUT**

FRIDAY EASTBOUND DIRECTION

TIME OF DAY	FLOWS AND CAPACITY IN VEH/HR							AVERAGE SPEEDS IN MPH		
	MAIN ROUTE		SITE CAPA CITY	FLOW		AV.DEL PER VEH (MINS)	AVERAGE QUEUE (VEH)	MAIN ROUTE		SITE
	DEMAND FLOW	PCT HEAVY		MAIN ROUTE	'DIVER TED'			WITHOUT WORK ZONE	WITH WORK ZONE	
MID-1 AM	637	0.0	1500	637	0	0.87	63	69.9	35.6	42.7
1-2 AM	424	0.0	1500	424	0	0.27	0	70.2	53.5	43.8
2-3 AM	307	0.0	1500	307	0	0.26	0	70.2	53.9	44.3
3-4 AM	361	0.0	1500	361	0	0.26	0	70.2	53.7	44.0
4-5 AM	832	0.0	1500	832	0	0.29	0	69.7	52.2	42.3
5-6 AM	2668	0.0	1499	1866	802	10.87+	299	67.4	6.8	30.8
6-7 AM	4733	0.0	1499	1500	3233	16.92+	435	58.5	5.3	31.2
7-8 AM	5414	0.0	1500	1500	3914	16.78+	435	53.8	5.3	31.2
8-9 AM	4312	0.0	1500	1500	2812	17.00+	435	61.4	5.3	31.2
9-10 AM	3187	0.0	1500	1537	1650	16.97+	430	66.8	5.4	30.8
10-11 AM	3078	0.0	1500	1522	1556	17.04+	432	66.9	5.3	30.8
11AM-NOON	3270	0.0	1500	1500	1770	17.14+	435	66.7	5.3	30.8
NOON-1PM	3292	0.0	1500	1500	1792	17.14+	435	66.6	5.3	30.8
1-2 PM	3412	0.0	1500	1500	1912	17.14+	435	66.5	5.3	30.8
2-3 PM	3506	0.0	1500	1500	2006	17.14+	435	66.4	5.3	30.8
3-4 PM	3871	0.0	1500	1500	2371	17.09+	435	64.4	5.3	30.8
4-5 PM	4148	0.0	1500	1500	2648	17.05+	435	62.5	5.3	30.8
5-6 PM	3971	0.0	1500	1500	2471	17.08+	435	63.7	5.3	30.8
6-7 PM	3782	0.0	1500	1500	2282	17.11+	435	65.0	5.3	30.8
7-8 PM	2904	0.0	1500	1503	1400	16.93+	429	67.1	5.4	30.8
8-9 PM	2644	0.0	1500	1498	1146	16.72+	423	67.4	5.4	30.8
9-10 PM	2601	0.0	1499	1499	1102	16.70+	423	67.5	5.4	30.8
10-11 PM	2203	0.0	1500	1500	703	16.67+	422	68.0	5.4	30.8
11PM-MID	1457	0.0	1500	1381	77	15.51+	392	68.9	5.6	30.8

+ INDICATES QUEUEING EXCEEDS USER-SPECIFIED MAXIMUM LIMIT

BREAKDOWN DURATION (MINS)	0
RANGE OF QUEUE DELAY - MIN (VEH-H) MAX	0.0
AV BREAKDOWNS PER DAY	0.00
AV QUEUE DELAY/DAY (VEH-H)	0.0
AV TOTAL DELAY/DAY (VEH-H)	0.0

BREAKDOWN DURATION (MINS)	0
RANGE OF QUEUE DELAY - MIN (VEH-H) MAX	0
AV BREAKDOWNS PER DAY	0
AV QUEUE DELAY/DAY (VEH-H)	0
AV TOTAL DELAY/DAY (VEH-H)	0

MAIN ROUTE WITHOUT WORKS	0.0107
MAIN ROUTE WITH WORKS	0.0016
'DIVERSION'	0.0131

PIA: Personal Injury Accidents

ROAD USER COSTS PER DAY	\$240,600
CONGESTED HOURS PER DAY*	19

\*Delays Exceeding User-Specified Maximum

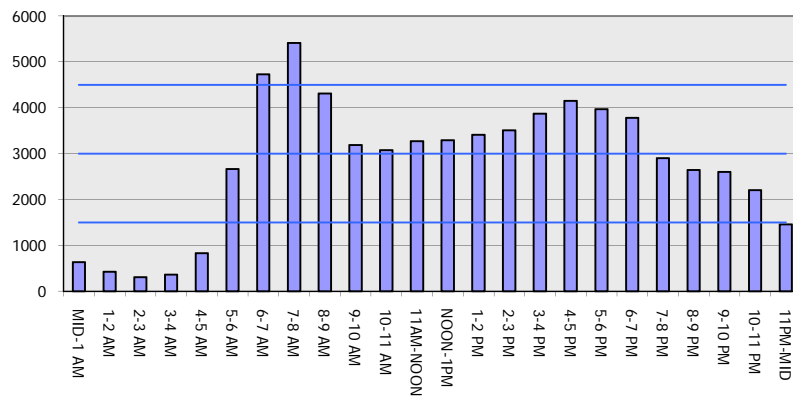
**IH 794: IH 43 TO LINCOLN MEMORIAL DR (MILWAUKEE COUNTY)  
 CONTINUOUS (24 HOUR) 2 LANE CLOSURE  
 NO DIVERSION ROUTE (MAX QUEUE METHOD)**

**AUGUST**

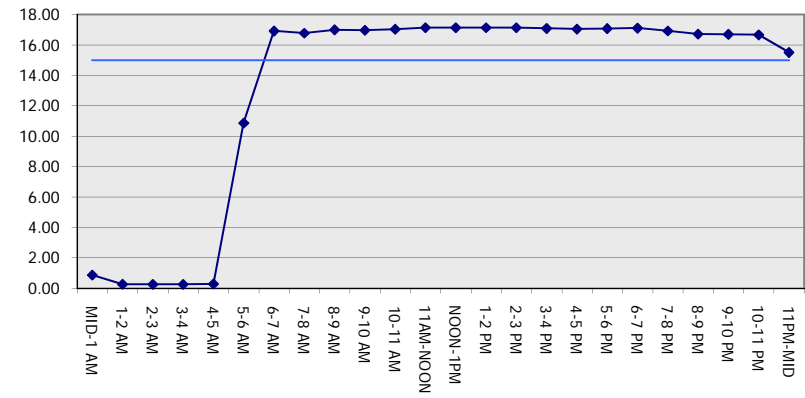
Analyzed for 2009  
 Construction Season

**GRAPHICAL REPRESENTATION OF TRAFFIC MODEL INPUT AND OUTPUT**  
**FRIDAY EASTBOUND DIRECTION**

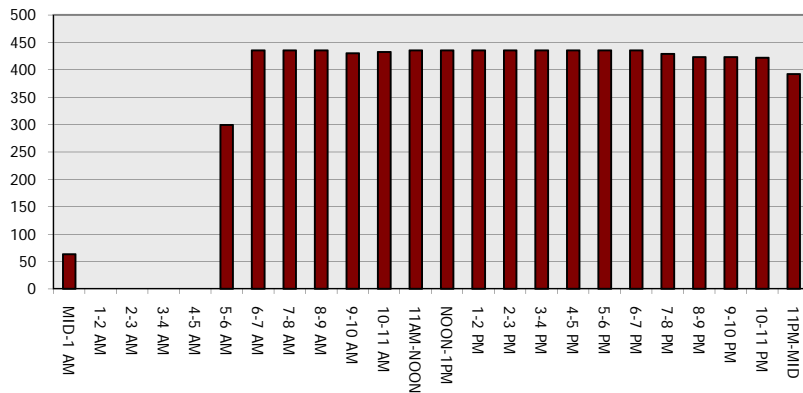
**Main Route - Traffic Demand (Vehicles Per Hour)**



**Main Route Average Delay Per Vehicle (Minutes)**



**Main Route - Average Queue Length (Vehicles)**



**Main Route - Average Speed (MPH)**

