

IH 794: IH 43 TO LINCOLN MEMORIAL DR (MILWAUKEE COUNTY) CONTINUOUS (24 HOUR) CLOSURE NO DIVERSION ROUTE (MAX QUEUE METHOD)	AUGUST
	Analyzed for 2009 Construction Season

SUMMARY OF TRAFFIC MODEL OUTPUT

FRIDAY WESTBOUND DIRECTION

TIME OF DAY	FLOWS AND CAPACITY IN VEH/HR						AVERAGE SPEEDS IN MPH			
	MAIN ROUTE		SITE CAPA CITY	FLOW		AV.DEL PER VEH (MINS)	AVERAGE QUEUE (VEH)	MAIN ROUTE		SITE
	DEMAND FLOW	PCT HEAVY		MAIN ROUTE	'DIVER TED'			WITHOUT WORK ZONE	WITH WORK ZONE	
MID-1 AM	889	0.0	3000	889	0	0.18	0	69.6	57.7	49.7
1-2 AM	823	0.0	3000	823	0	0.18	0	69.7	57.7	49.7
2-3 AM	449	0.0	3000	449	0	0.18	0	70.2	57.9	49.7
3-4 AM	347	0.0	3000	347	0	0.18	0	70.2	57.9	49.7
4-5 AM	569	0.0	3000	569	0	0.18	0	70.0	57.8	49.7
5-6 AM	1501	0.0	3000	1501	0	0.17	0	68.9	57.4	49.7
6-7 AM	3326	0.0	2999	3326	0	1.06	83	66.6	31.4	37.4
7-8 AM	4266	0.0	3000	3604	662	14.51+	804	61.7	8.6	37.3
8-9 AM	3159	0.0	3000	2942	217	16.81+	906	66.8	8.3	37.3
9-10 AM	2730	0.0	2999	2730	0	13.96+	750	67.3	8.7	37.3
10-11 AM	3037	0.0	3000	3037	0	11.24	599	66.9	9.2	37.3
11AM-NOON	3727	0.0	3000	3299	428	15.92+	862	65.4	8.4	37.3
NOON-1PM	3812	0.0	2999	2983	829	16.95+	918	64.8	8.2	37.3
1-2 PM	3953	0.0	2999	2994	960	16.94+	919	63.8	8.2	37.3
2-3 PM	4516	0.0	2999	3070	1446	17.66+	968	60.0	8.1	37.3
3-4 PM	4822	0.0	3000	3000	1822	18.04+	995	57.9	8.1	37.3
4-5 PM	4886	0.0	3000	3000	1886	18.02+	995	57.5	8.1	37.3
5-6 PM	3989	0.0	3000	2937	1052	17.23+	936	63.6	8.2	37.3
6-7 PM	2858	0.0	2999	2790	68	15.96+	859	67.2	8.4	37.3
7-8 PM	2158	0.0	2999	2158	0	3.48	329	68.1	18.5	44.5
8-9 PM	2166	0.0	3000	2166	0	0.17	0	68.1	57.1	49.7
9-10 PM	2353	0.0	3000	2353	0	0.17	0	67.8	57.1	49.7
10-11 PM	2442	0.0	3000	2442	0	0.18	0	67.7	56.0	48.3
11PM-MID	2049	0.0	3000	2049	0	0.17	0	68.2	57.2	49.7

+ INDICATES QUEUEING EXCEEDS USER-SPECIFIED MAXIMUM LIMIT

----- SITE BREAKDOWN DELAYS -----	
BREAKDOWN DURATION (MINS)	0
RANGE OF QUEUE DELAY - MIN (VEH-H) MAX	0.0
AV BREAKDOWNS PER DAY	0.00
AV QUEUE DELAY/DAY (VEH-H)	0.0
AV TOTAL DELAY/DAY (VEH-H)	0.0

----- SITE ACCIDENT DELAYS -----	
BREAKDOWN DURATION (MINS)	0
RANGE OF QUEUE DELAY - MIN (VEH-H) MAX	0
AV BREAKDOWNS PER DAY	0
AV QUEUE DELAY/DAY (VEH-H)	0
AV TOTAL DELAY/DAY (VEH-H)	0

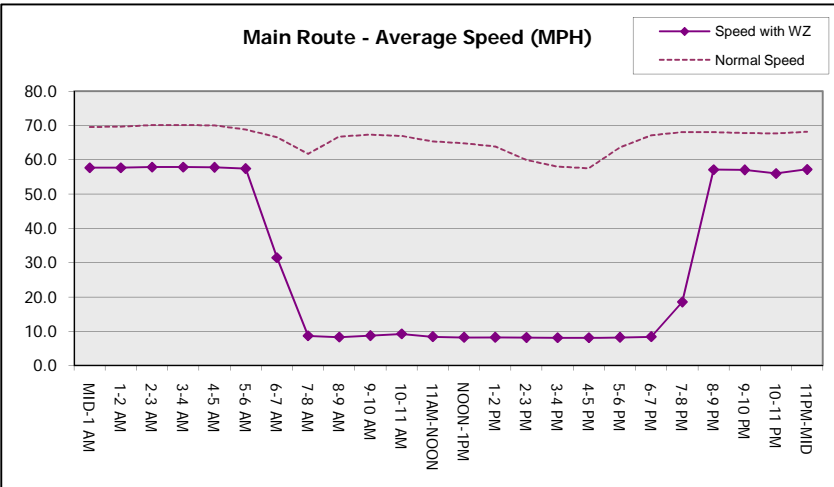
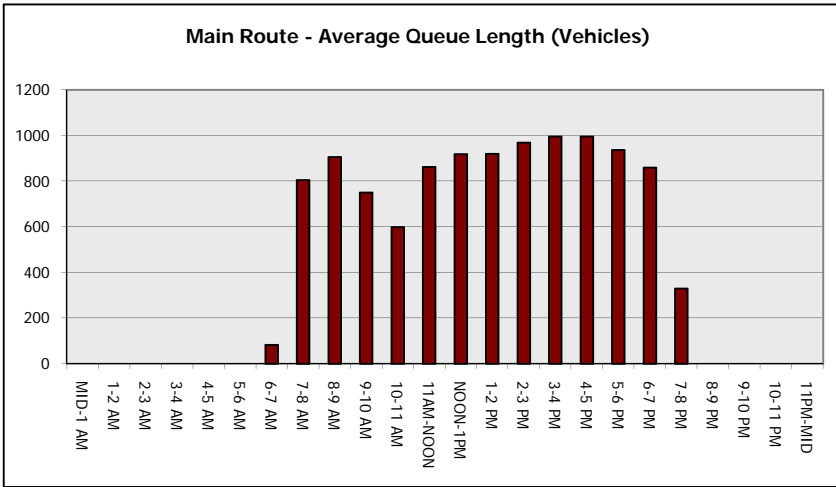
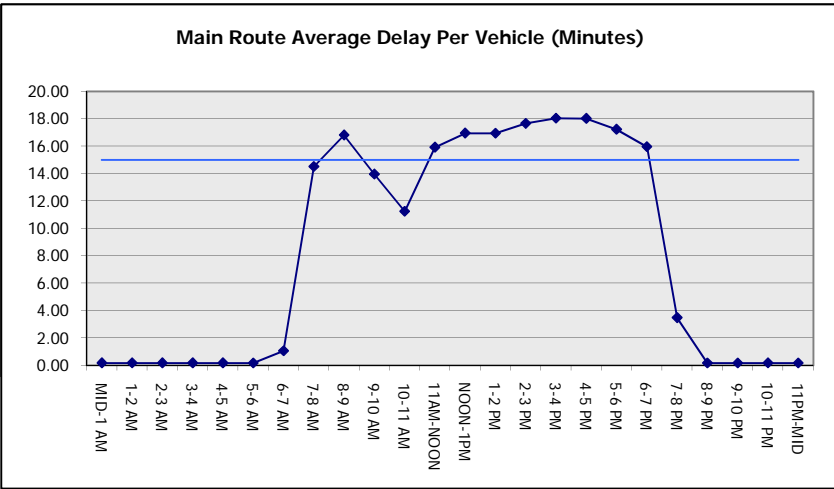
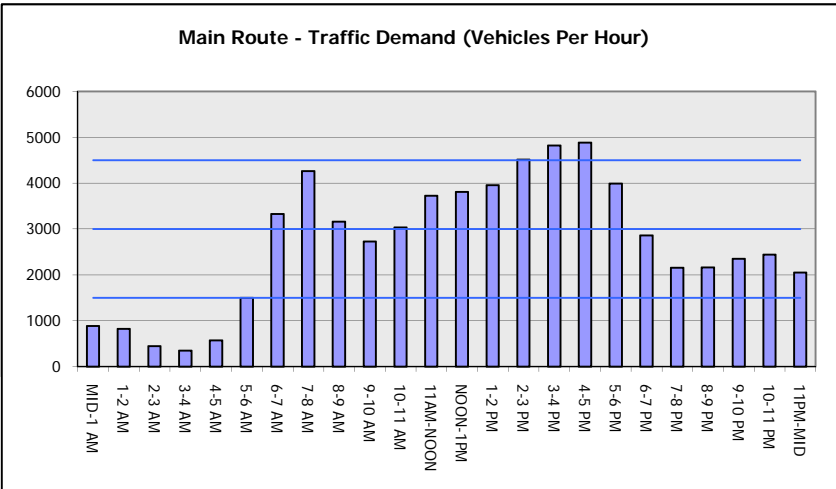
AVERAGE ACCIDENT NUMBERS (PIA/DAY)	
MAIN ROUTE WITHOUT WORKS	0.0103
MAIN ROUTE WITH WORKS	0.0028
'DIVERSION'	0.0035
PIA: Personal Injury Accidents	
IMPACTS ON ROAD USERS	
ROAD USER COSTS PER DAY	\$170,657
CONGESTED HOURS PER DAY*	11

*Delays Exceeding User-Specified Maximum

**IH 794: IH 43 TO LINCOLN MEMORIAL DR (MILWAUKEE COUNTY)
CONTINUOUS (24 HOUR) CLOSURE
NO DIVERSION ROUTE (MAX QUEUE METHOD)**

AUGUST
Analyzed for 2009
Construction Season

GRAPHICAL REPRESENTATION OF TRAFFIC MODEL INPUT AND OUTPUT
FRIDAY WESTBOUND DIRECTION



IH 794: IH 43 TO LINCOLN MEMORIAL DR (MILWAUKEE COUNTY) CONTINUOUS (24 HOUR) CLOSURE NO DIVERSION ROUTE (MAX QUEUE METHOD)	AUGUST
	Analyzed for 2009 Construction Season

SUMMARY OF TRAFFIC MODEL OUTPUT

FRIDAY EASTBOUND DIRECTION

TIME OF DAY	FLOWS AND CAPACITY IN VEH/HR						AVERAGE SPEEDS IN MPH			
	MAIN ROUTE		SITE CAPA CITY	FLOW		AV.DEL PER VEH (MINS)	AVERAGE QUEUE (VEH)	MAIN ROUTE		SITE
	DEMAND FLOW	PCT HEAVY		MAIN ROUTE	'DIVER TED'			WITHOUT WORK ZONE	WITH WORK ZONE	
MID-1 AM	637	0.0	3000	637	0	0.18	0	69.9	57.8	49.7
1-2 AM	424	0.0	3000	424	0	0.18	0	70.2	57.9	49.7
2-3 AM	307	0.0	3000	307	0	0.18	0	70.2	57.9	49.7
3-4 AM	361	0.0	3000	361	0	0.18	0	70.2	57.9	49.7
4-5 AM	832	0.0	3000	832	0	0.18	0	69.7	57.7	49.7
5-6 AM	2668	0.0	2999	2668	0	0.48	19	67.4	43.8	43.5
6-7 AM	4733	0.0	3000	3847	886	11.73+	690	58.5	9.4	37.3
7-8 AM	5414	0.0	2999	3000	2414	17.82+	995	53.8	8.1	37.3
8-9 AM	4312	0.0	3000	3008	1304	17.45+	954	61.4	8.1	37.3
9-10 AM	3187	0.0	3000	2967	220	16.85+	908	66.8	8.3	37.3
10-11 AM	3078	0.0	2999	3005	73	16.86+	909	66.9	8.3	37.3
11AM-NOON	3270	0.0	3000	3004	266	16.89+	911	66.7	8.3	37.3
NOON-1PM	3292	0.0	3000	3002	290	16.90+	911	66.6	8.3	37.3
1-2 PM	3412	0.0	3000	3002	411	16.92+	913	66.5	8.3	37.3
2-3 PM	3506	0.0	3000	3001	504	16.93+	914	66.4	8.3	37.3
3-4 PM	3871	0.0	2999	3003	867	16.94+	918	64.4	8.2	37.3
4-5 PM	4148	0.0	3000	3013	1135	16.99+	925	62.5	8.2	37.3
5-6 PM	3971	0.0	3000	2995	976	16.94+	919	63.7	8.2	37.3
6-7 PM	3782	0.0	2999	2996	786	16.94+	917	65.0	8.2	37.3
7-8 PM	2904	0.0	3000	2869	35	16.29+	877	67.1	8.3	37.3
8-9 PM	2644	0.0	2999	2644	0	11.54+	620	67.4	9.2	37.3
9-10 PM	2601	0.0	3000	2601	0	4.35	246	67.5	13.9	39.1
10-11 PM	2203	0.0	3000	2203	0	0.18	0	68.0	56.5	49.7
11PM-MID	1457	0.0	3000	1457	0	0.17	0	68.9	57.4	49.7

+ INDICATES QUEUEING EXCEEDS USER-SPECIFIED MAXIMUM LIMIT

----- SITE BREAKDOWN DELAYS -----	
BREAKDOWN DURATION (MINS)	0
RANGE OF QUEUE DELAY - MIN (VEH-H) MAX	0.0
AV BREAKDOWNS PER DAY	0.00
AV QUEUE DELAY/DAY (VEH-H)	0.0
AV TOTAL DELAY/DAY (VEH-H)	0.0

----- SITE ACCIDENT DELAYS -----	
BREAKDOWN DURATION (MINS)	0
RANGE OF QUEUE DELAY - MIN (VEH-H) MAX	0
AV BREAKDOWNS PER DAY	0
AV QUEUE DELAY/DAY (VEH-H)	0
AV TOTAL DELAY/DAY (VEH-H)	0

AVERAGE ACCIDENT NUMBERS (PIA/DAY)	
MAIN ROUTE WITHOUT WORKS	0.0107
MAIN ROUTE WITH WORKS	0.0029
'DIVERSION'	0.0037

PIA: Personal Injury Accidents

ECONOMIC IMPACT ON ROAD USERS	
ROAD USER COSTS PER DAY	\$206,328
CONGESTED HOURS PER DAY*	15

*Delays Exceeding User-Specified Maximum

**IH 794: IH 43 TO LINCOLN MEMORIAL DR (MILWAUKEE COUNTY)
CONTINUOUS (24 HOUR) CLOSURE
NO DIVERSION ROUTE (MAX QUEUE METHOD)**

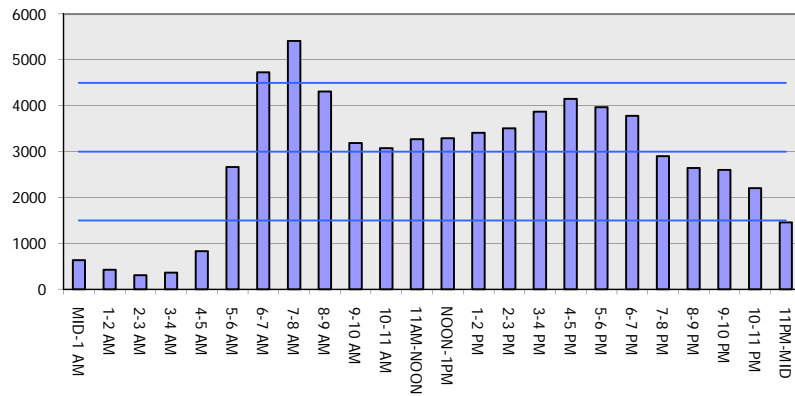
AUGUST

Analyzed for 2009
Construction Season

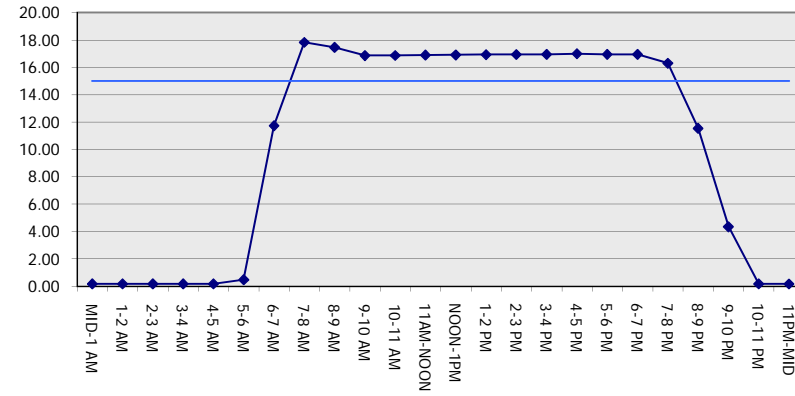
GRAPHICAL REPRESENTATION OF TRAFFIC MODEL INPUT AND OUTPUT

FRIDAY EASTBOUND DIRECTION

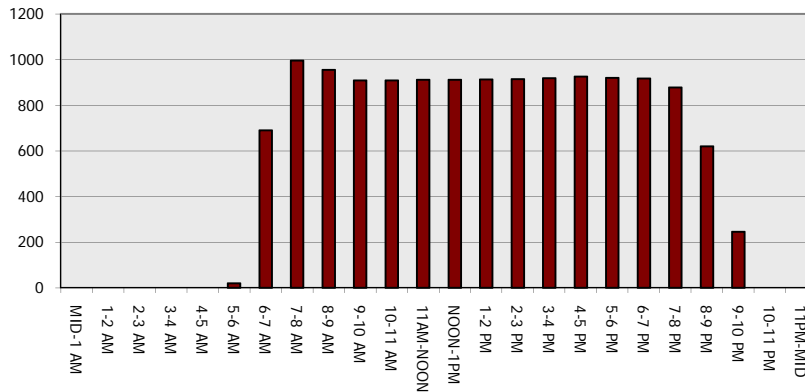
Main Route - Traffic Demand (Vehicles Per Hour)



Main Route Average Delay Per Vehicle (Minutes)



Main Route - Average Queue Length (Vehicles)



Main Route - Average Speed (MPH)

