

IH 43/894: HALE INTERCHANGE TO STH 27 (MILWAUKEE COUNTY) CONTINUOUS (24 HOUR) CLOSURE NO DIVERSION ROUTE (MAX QUEUE METHOD)	OCTOBER
	Analyzed for 2009 Construction Season

SUMMARY OF TRAFFIC MODEL OUTPUT

SATURDAY SOUTHBOUND DIRECTION

TIME OF DAY	FLOWS AND CAPACITY IN VEH/HR						AVERAGE SPEEDS IN MPH			
	MAIN ROUTE		SITE CAPA CITY	FLOW		AV.DEL PER VEH (MINS)	AVERAGE QUEUE (VEH)	MAIN ROUTE		SITE
	DEMAND FLOW	PCT HEAVY		MAIN ROUTE	'DIVER TED'			WITHOUT WORK ZONE	WITH WORK ZONE	
MID-1 AM	1049	0.0	3000	1049	0	0.35	0	69.4	63.5	49.7
1-2 AM	616	0.0	3000	616	0	0.36	0	70.0	63.8	49.7
2-3 AM	566	0.0	3000	566	0	0.36	0	70.0	63.8	49.7
3-4 AM	475	0.0	3000	475	0	0.36	0	70.2	63.9	49.7
4-5 AM	607	0.0	3000	607	0	0.36	0	70.0	63.8	49.7
5-6 AM	1034	0.0	3000	1034	0	0.35	0	69.4	63.5	49.7
6-7 AM	1688	0.0	3000	1688	0	0.34	0	68.6	63.0	49.7
7-8 AM	2500	0.0	2999	2500	0	0.43	0	67.6	60.8	46.1
8-9 AM	3289	0.0	2999	3289	0	2.41	108	66.6	41.0	37.3
9-10 AM	3651	0.0	3000	3603	49	10.65+	584	65.9	17.7	37.3
10-11 AM	4012	0.0	3000	2997	1015	15.06+	801	63.5	13.5	37.3
11AM-NOON	4313	0.0	2999	2997	1316	14.92+	801	61.4	13.5	37.3
NOON-1PM	4526	0.0	2999	2997	1529	14.82+	801	59.9	13.5	37.3
1-2 PM	3977	0.0	3000	2997	979	15.07+	801	63.7	13.5	37.3
2-3 PM	3904	0.0	2999	2998	906	15.10+	801	64.2	13.5	37.3
3-4 PM	4301	0.0	2999	2997	1304	14.93+	801	61.5	13.5	37.3
4-5 PM	4145	0.0	2999	2997	1148	15.00+	801	62.5	13.5	37.3
5-6 PM	4085	0.0	2999	2997	1087	15.02+	801	63.0	13.5	37.3
6-7 PM	3547	0.0	3000	2947	600	15.12+	795	66.3	13.6	37.3
7-8 PM	2841	0.0	2999	2812	30	14.31+	750	67.2	14.2	37.3
8-9 PM	2286	0.0	2999	2286	0	4.36	295	67.9	31.6	43.4
9-10 PM	2190	0.0	3000	2190	0	0.33	0	68.0	62.5	49.7
10-11 PM	1879	0.0	3000	1879	0	0.34	0	68.4	62.8	49.7
11PM-MID	1513	0.0	3000	1513	0	0.34	0	68.9	63.1	49.7

+ INDICATES QUEUEING EXCEEDS USER-SPECIFIED MAXIMUM LIMIT

----- SITE BREAKDOWN DELAYS -----	
BREAKDOWN DURATION (MINS)	0
RANGE OF QUEUE DELAY - MIN	0.0
(VEH-H) MAX	0.0
AV BREAKDOWNS PER DAY	0.00
AV QUEUE DELAY/DAY (VEH-H)	0.0
AV TOTAL DELAY/DAY (VEH-H)	0.0

----- SITE ACCIDENT DELAYS -----	
BREAKDOWN DURATION (MINS)	0
RANGE OF QUEUE DELAY - MIN	0
(VEH-H) MAX	0
AV BREAKDOWNS PER DAY	0
AV QUEUE DELAY/DAY (VEH-H)	0
AV TOTAL DELAY/DAY (VEH-H)	0

AVERAGE ACCIDENT NUMBERS (PIA/DAY)	
MAIN ROUTE WITHOUT WORKS	0.0431
MAIN ROUTE WITH WORKS	0.0328
'DIVERSION'	0.0158
PIA: Personal Injury Accidents	
IMPACTS ON ROAD USERS	
ROAD USER COSTS PER DAY	\$183,186
CONGESTED HOURS PER DAY*	11

*Delays Exceeding User-Specified Maximum

**IH 43/894: HALE INTERCHANGE TO STH 27 (MILWAUKEE COUNTY)
CONTINUOUS (24 HOUR) CLOSURE
NO DIVERSION ROUTE (MAX QUEUE METHOD)**

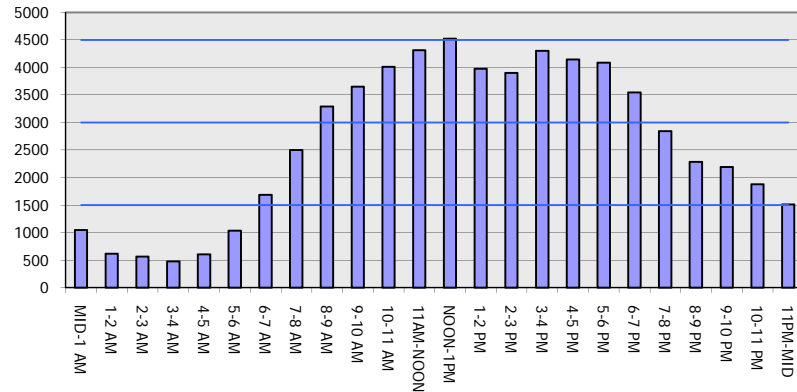
OCTOBER

Analyzed for 2009
Construction Season

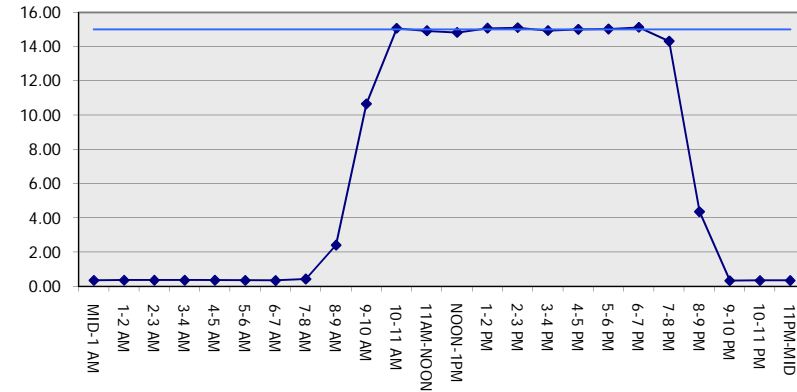
GRAPHICAL REPRESENTATION OF TRAFFIC MODEL INPUT AND OUTPUT

SATURDAY SOUTHBOUND DIRECTION

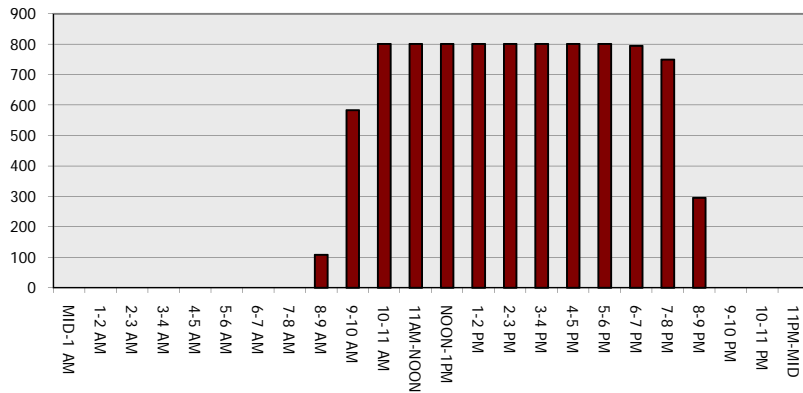
Main Route - Traffic Demand (Vehicles Per Hour)



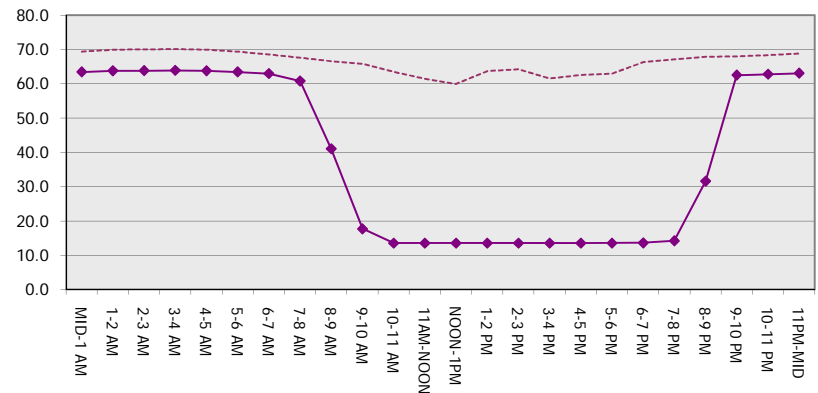
Main Route Average Delay Per Vehicle (Minutes)



Main Route - Average Queue Length (Vehicles)



Main Route - Average Speed (MPH)



IH 43/894: HALE INTERCHANGE TO STH 27 (MILWAUKEE COUNTY) CONTINUOUS (24 HOUR) CLOSURE NO DIVERSION ROUTE (MAX QUEUE METHOD)	OCTOBER
	Analyzed for 2009 Construction Season

SUMMARY OF TRAFFIC MODEL OUTPUT

SATURDAY NORTHBOUND DIRECTION

TIME OF DAY	FLOWS AND CAPACITY IN VEH/HR						AVERAGE SPEEDS IN MPH			
	MAIN ROUTE		SITE CAPA CITY	FLOW		AV.DEL PER VEH (MINS)	AVERAGE QUEUE (VEH)	MAIN ROUTE		SITE
	DEMAND FLOW	PCT HEAVY		MAIN ROUTE	'DIVER TED'			WITHOUT WORK ZONE	WITH WORK ZONE	
MID-1 AM	854	0.0	3000	854	0	0.35	0	69.7	63.6	49.7
1-2 AM	504	0.0	3000	504	0	0.36	0	70.1	63.9	49.7
2-3 AM	459	0.0	3000	459	0	0.36	0	70.2	63.9	49.7
3-4 AM	409	0.0	3000	409	0	0.36	0	70.2	63.9	49.7
4-5 AM	602	0.0	3000	602	0	0.36	0	70.0	63.8	49.7
5-6 AM	1137	0.0	3000	1137	0	0.35	0	69.3	63.4	49.7
6-7 AM	1549	0.0	3000	1549	0	0.34	0	68.8	63.0	49.7
7-8 AM	1976	0.0	3000	1976	0	0.34	0	68.2	62.7	49.7
8-9 AM	2579	0.0	2999	2579	0	0.45	0	67.5	60.4	45.2
9-10 AM	3074	0.0	2999	3074	0	1.11	24	66.9	52.0	37.6
10-11 AM	3549	0.0	3000	3549	0	6.25	341	66.3	25.5	37.3
11AM-NOON	4063	0.0	2999	3101	962	14.83+	790	63.1	13.7	37.3
NOON-1PM	4274	0.0	3000	3003	1271	14.94+	801	61.7	13.5	37.3
1-2 PM	3614	0.0	3000	3000	614	15.22+	801	66.1	13.5	37.3
2-3 PM	4085	0.0	3000	3002	1083	15.02+	801	63.0	13.5	37.3
3-4 PM	4319	0.0	3000	3003	1317	14.92+	801	61.4	13.5	37.3
4-5 PM	4263	0.0	3000	3003	1260	14.94+	801	61.7	13.5	37.3
5-6 PM	4135	0.0	3000	3002	1133	15.00+	801	62.6	13.5	37.3
6-7 PM	3730	0.0	3000	3000	729	15.17+	801	65.4	13.5	37.3
7-8 PM	3015	0.0	3000	2973	42	14.86+	779	67.0	13.8	37.3
8-9 PM	2561	0.0	2999	2561	0	10.11	536	67.6	18.5	37.6
9-10 PM	2325	0.0	2999	2325	0	1.38	75	67.8	49.8	46.3
10-11 PM	1779	0.0	3000	1779	0	0.34	0	68.5	62.8	49.7
11PM-MID	1370	0.0	3000	1370	0	0.34	0	69.1	63.2	49.7

+ INDICATES QUEUEING EXCEEDS USER-SPECIFIED MAXIMUM LIMIT

----- SITE BREAKDOWN DELAYS -----	
BREAKDOWN DURATION (MINS)	0
RANGE OF QUEUE DELAY - MIN (VEH-H) MAX	0.0
AV BREAKDOWNS PER DAY	0.00
AV QUEUE DELAY/DAY (VEH-H)	0.0
AV TOTAL DELAY/DAY (VEH-H)	0.0

----- SITE ACCIDENT DELAYS -----	
BREAKDOWN DURATION (MINS)	0
RANGE OF QUEUE DELAY - MIN (VEH-H) MAX	0
AV BREAKDOWNS PER DAY	0
AV QUEUE DELAY/DAY (VEH-H)	0
AV TOTAL DELAY/DAY (VEH-H)	0

AVERAGE ACCIDENT NUMBERS (PIA/DAY)	
MAIN ROUTE WITHOUT WORKS	0.0412
MAIN ROUTE WITH WORKS	0.0320
'DIVERSION'	0.0133

PIA: Personal Injury Accidents

ECONOMIC IMPACT ON ROAD USERS	
ROAD USER COSTS PER DAY	\$165,538
CONGESTED HOURS PER DAY*	9

*Delays Exceeding User-Specified Maximum

**IH 43/894: HALE INTERCHANGE TO STH 27 (MILWAUKEE COUNTY)
 CONTINUOUS (24 HOUR) CLOSURE
 NO DIVERSION ROUTE (MAX QUEUE METHOD)**

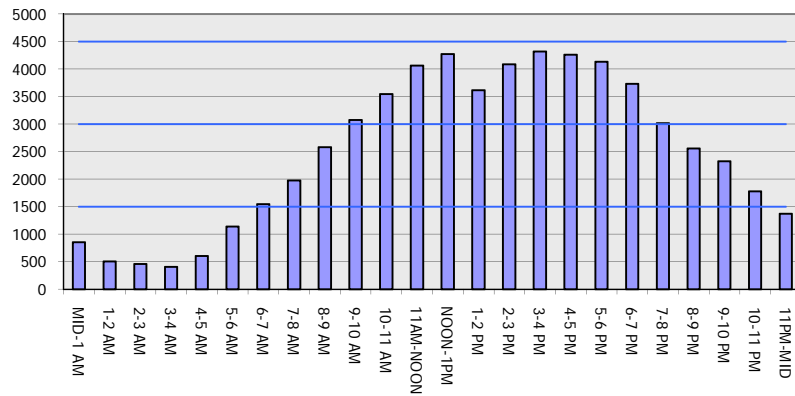
OCTOBER

Analyzed for 2009
 Construction Season

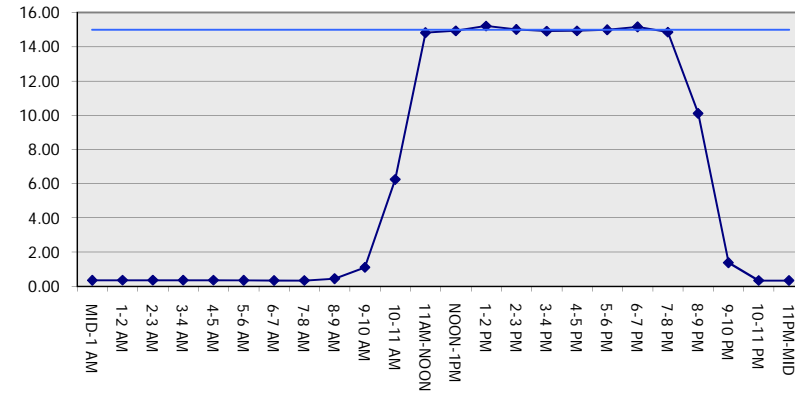
GRAPHICAL REPRESENTATION OF TRAFFIC MODEL INPUT AND OUTPUT

SATURDAY NORTHBOUND DIRECTION

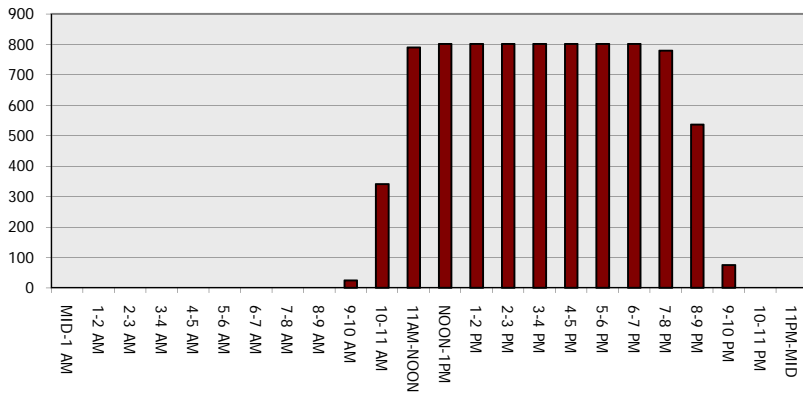
Main Route - Traffic Demand (Vehicles Per Hour)



Main Route Average Delay Per Vehicle (Minutes)



Main Route - Average Queue Length (Vehicles)



Main Route - Average Speed (MPH)

