

<b>IH 43/894: HALE INTERCHANGE TO STH 27 (MILWAUKEE COUNTY)                  CONTINUOUS (24 HOUR) CLOSURE                  NO DIVERSION ROUTE (MAX QUEUE METHOD)</b>	<b>OCTOBER</b>
	Analyzed for 2009 Construction Season

**SUMMARY OF TRAFFIC MODEL OUTPUT**

MON-THUR                  SOUTHBOUND DIRECTION

TIME OF DAY	FLOWS AND CAPACITY IN VEH/HR							AVERAGE SPEEDS IN MPH		
	MAIN ROUTE		SITE CAPA CITY	FLOW		AV.DEL PER VEH (MINS)	AVERAGE QUEUE (VEH)	MAIN ROUTE		SITE
	DEMAND FLOW	PCT HEAVY		MAIN ROUTE	'DIVER TED'			WITHOUT WORK ZONE	WITH WORK ZONE	
MID-1 AM	662	0.0	3000	662	0	0.36	0	69.9	63.8	49.7
1-2 AM	428	0.0	3000	428	0	0.36	0	70.2	63.9	49.7
2-3 AM	396	0.0	3000	396	0	0.36	0	70.2	63.9	49.7
3-4 AM	484	0.0	3000	484	0	0.36	0	70.1	63.9	49.7
4-5 AM	955	0.0	3000	955	0	0.35	0	69.6	63.5	49.7
5-6 AM	2525	0.0	2999	2525	0	0.51	0	67.6	59.6	43.7
6-7 AM	4504	0.0	2999	3623	881	9.02+	554	60.1	19.4	38.4
7-8 AM	4698	0.0	3000	3016	1682	14.63+	800	58.7	13.6	39.1
8-9 AM	3955	0.0	3000	3091	864	14.90+	791	63.8	13.7	37.3
9-10 AM	3541	0.0	3000	3022	519	15.18+	798	66.3	13.5	37.3
10-11 AM	3505	0.0	2999	3000	505	15.23+	801	66.4	13.5	37.3
11AM-NOON	3600	0.0	3000	3000	599	15.22+	801	66.3	13.5	37.3
NOON-1PM	3769	0.0	3000	3001	768	15.15+	801	65.1	13.5	37.3
1-2 PM	3987	0.0	3000	3002	985	15.06+	801	63.6	13.5	37.3
2-3 PM	4596	0.0	3000	3002	1594	14.78+	801	59.4	13.5	37.3
3-4 PM	5418	0.0	3000	3000	2418	14.34+	801	53.8	13.5	37.3
4-5 PM	5668	0.0	3000	3000	2668	14.18+	801	52.2	13.5	37.3
5-6 PM	5222	0.0	3000	3000	2222	14.45+	801	55.2	13.5	37.3
6-7 PM	4262	0.0	3000	3002	1260	14.94+	801	61.7	13.5	37.3
7-8 PM	2858	0.0	3000	2858	0	14.28+	748	67.2	14.2	37.3
8-9 PM	2319	0.0	2999	2319	0	4.59	301	67.9	30.7	42.8
9-10 PM	2156	0.0	3000	2156	0	0.33	0	68.1	62.6	49.7
10-11 PM	1582	0.0	3000	1582	0	0.34	0	68.7	63.0	49.7
11PM-MID	1041	0.0	3000	1041	0	0.35	0	69.4	63.5	49.7

+ INDICATES QUEUEING EXCEEDS USER-SPECIFIED MAXIMUM LIMIT

*----- SITE BREAKDOWN DELAYS -----*	
BREAKDOWN DURATION (MINS)	0
RANGE OF QUEUE DELAY - MIN (VEH-H) MAX	0.0
AV BREAKDOWNS PER DAY	0.00
AV QUEUE DELAY/DAY (VEH-H)	0.0
AV TOTAL DELAY/DAY (VEH-H)	0.0

*----- SITE ACCIDENT DELAYS -----*	
BREAKDOWN DURATION (MINS)	0
RANGE OF QUEUE DELAY - MIN (VEH-H) MAX	0
AV BREAKDOWNS PER DAY	0
AV QUEUE DELAY/DAY (VEH-H)	0
AV TOTAL DELAY/DAY (VEH-H)	0

AVERAGE ACCIDENT NUMBERS (PIA/DAY)	
MAIN ROUTE WITHOUT WORKS	0.0494
MAIN ROUTE WITH WORKS	0.0341
'DIVERSION'	0.0269
PIA: Personal Injury Accidents	
IMPACTS ON ROAD USERS	
ROAD USER COSTS PER DAY	\$189,801
CONGESTED HOURS PER DAY*	14

\*Delays Exceeding User-Specified Maximum

**IH 43/894: HALE INTERCHANGE TO STH 27 (MILWAUKEE COUNTY)  
CONTINUOUS (24 HOUR) CLOSURE  
NO DIVERSION ROUTE (MAX QUEUE METHOD)**

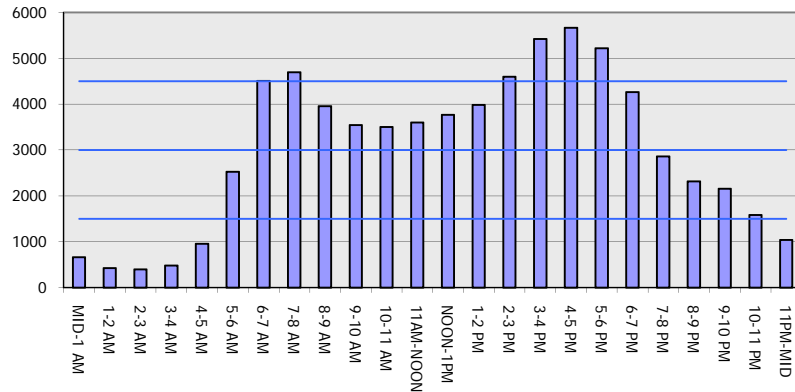
**OCTOBER**

Analyzed for 2009  
Construction Season

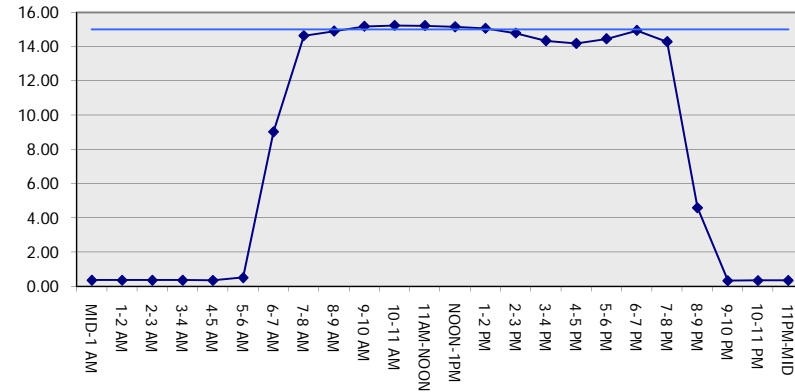
**GRAPHICAL REPRESENTATION OF TRAFFIC MODEL INPUT AND OUTPUT**

**MON-THUR SOUTHBOUND DIRECTION**

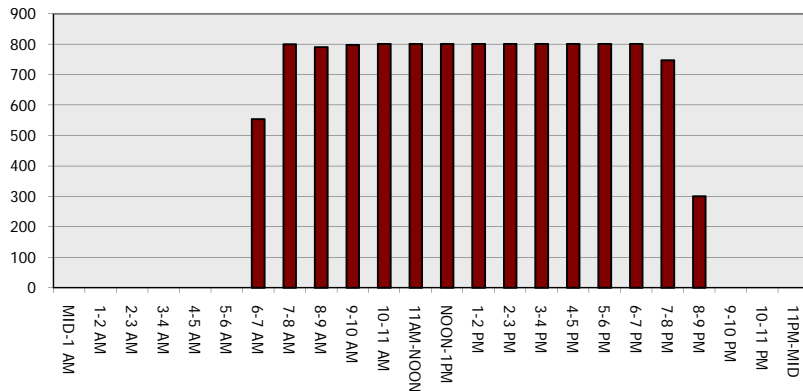
**Main Route - Traffic Demand (Vehicles Per Hour)**



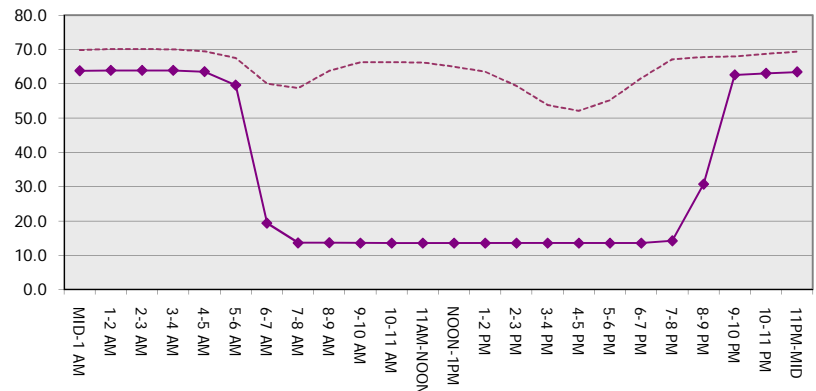
**Main Route Average Delay Per Vehicle (Minutes)**



**Main Route - Average Queue Length (Vehicles)**



**Main Route - Average Speed (MPH)**



<b>IH 43/894: HALE INTERCHANGE TO STH 27 (MILWAUKEE COUNTY)                  CONTINUOUS (24 HOUR) CLOSURE                  NO DIVERSION ROUTE (MAX QUEUE METHOD)</b>	<b>OCTOBER</b>
	Analyzed for 2009 Construction Season

**SUMMARY OF TRAFFIC MODEL OUTPUT**

MON-THUR                      NORTHBOUND DIRECTION

TIME OF DAY	FLOWS AND CAPACITY IN VEH/HR							AVERAGE SPEEDS IN MPH			
	MAIN ROUTE		SITE CAPA CITY	FLOW		AV.DEL PER VEH (MINS)	AVERAGE QUEUE (VEH)	MAIN ROUTE		SITE	
	DEMAND FLOW	PCT HEAVY		MAIN ROUTE	'DIVER TED'			WITHOUT WORK ZONE	WITH WORK ZONE		
MID-1 AM	527	0.0	3000	527	0	0.36	0	70.0	63.8	49.7	
1-2 AM	361	0.0	3000	361	0	0.36	0	70.2	63.9	49.7	
2-3 AM	372	0.0	3000	372	0	0.36	0	70.2	63.9	49.7	
3-4 AM	514	0.0	3000	514	0	0.36	0	70.1	63.9	49.7	
4-5 AM	1052	0.0	3000	1052	0	0.35	0	69.4	63.5	49.7	
5-6 AM	2650	0.0	2999	2650	0	0.83	21	67.4	55.4	43.5	
6-7 AM	5221	0.0	3000	3924	1297	11.52+	674	55.2	16.0	38.6	
7-8 AM	5609	0.0	3000	2997	2613	14.11+	801	52.5	13.6	39.7	
8-9 AM	4669	0.0	2999	2907	1762	14.56+	794	58.9	13.7	38.4	
9-10 AM	3563	0.0	2999	2919	643	15.08+	793	66.3	13.6	37.3	
10-11 AM	3344	0.0	3000	3000	344	15.24+	801	66.6	13.5	37.3	
11AM-NOON	3440	0.0	3000	3000	440	15.23+	801	66.4	13.5	37.3	
NOON-1PM	3670	0.0	3000	3000	670	15.19+	801	65.8	13.5	37.3	
1-2 PM	3857	0.0	3000	3000	858	15.12+	801	64.5	13.5	37.3	
2-3 PM	4445	0.0	2999	2998	1447	14.86+	801	60.5	13.5	37.3	
3-4 PM	4986	0.0	3000	3000	1986	14.58+	801	56.8	13.5	37.3	
4-5 PM	5365	0.0	3000	3000	2365	14.37+	801	54.2	13.5	37.3	
5-6 PM	5451	0.0	3000	3000	2451	14.31+	801	53.6	13.5	37.3	
6-7 PM	4177	0.0	3000	2999	1179	14.98+	801	62.3	13.5	37.3	
7-8 PM	3064	0.0	3000	2915	148	15.08+	791	66.9	13.7	37.3	
8-9 PM	2585	0.0	2999	2585	0	10.64	562	67.5	17.8	37.4	
9-10 PM	2207	0.0	3000	2207	0	1.41	81	68.0	49.6	46.9	
10-11 PM	1513	0.0	3000	1513	0	0.34	0	68.9	63.1	49.7	
11PM-MID	1072	0.0	3000	1072	0	0.35	0	69.4	63.4	49.7	

+ INDICATES QUEUEING EXCEEDS USER-SPECIFIED MAXIMUM LIMIT

BREAKDOWN DURATION (MINS)	0
RANGE OF QUEUE DELAY - MIN (VEH-H) MAX	0.0
AV BREAKDOWNS PER DAY	0.00
AV QUEUE DELAY/DAY (VEH-H)	0.0
AV TOTAL DELAY/DAY (VEH-H)	0.0

BREAKDOWN DURATION (MINS)	0
RANGE OF QUEUE DELAY - MIN (VEH-H) MAX	0
AV BREAKDOWNS PER DAY	0
AV QUEUE DELAY/DAY (VEH-H)	0
AV TOTAL DELAY/DAY (VEH-H)	0

MAIN ROUTE WITHOUT WORKS	0.0504
MAIN ROUTE WITH WORKS	0.0343
'DIVERSION'	0.0288

PIA: Personal Injury Accidents

ROAD USER COSTS PER DAY	\$200,269
CONGESTED HOURS PER DAY*	14

\*Delays Exceeding User-Specified Maximum

**IH 43/894: HALE INTERCHANGE TO STH 27 (MILWAUKEE COUNTY)  
CONTINUOUS (24 HOUR) CLOSURE  
NO DIVERSION ROUTE (MAX QUEUE METHOD)**

**OCTOBER**

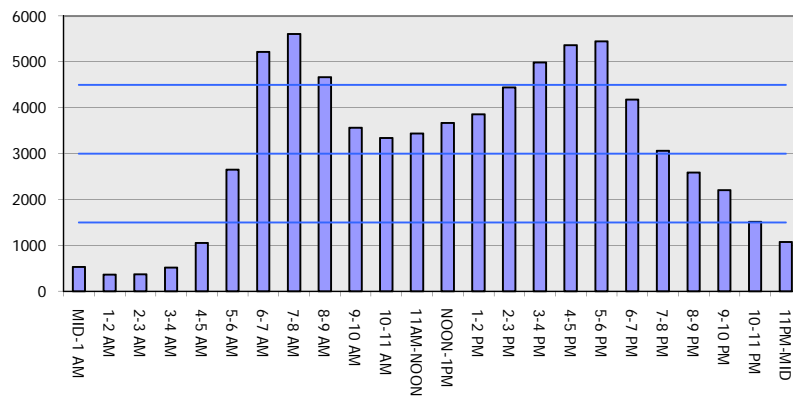
Analyzed for 2009  
Construction Season

**GRAPHICAL REPRESENTATION OF TRAFFIC MODEL INPUT AND OUTPUT**

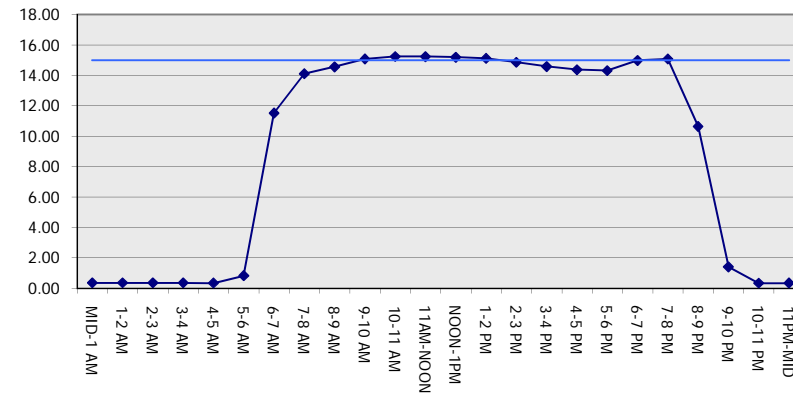
**MON-THUR**

**NORTHBOUND DIRECTION**

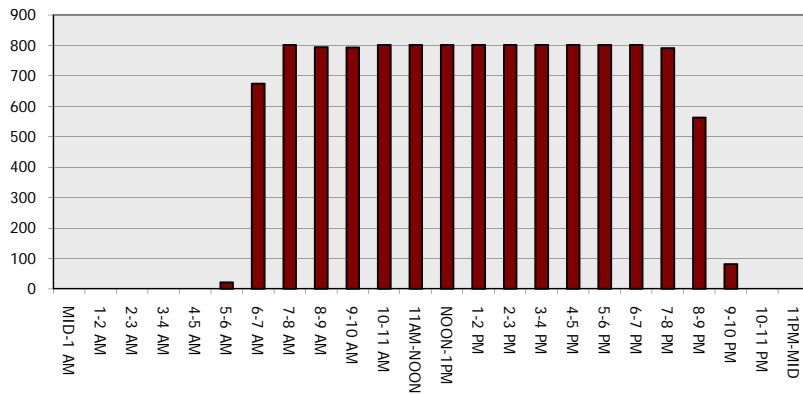
**Main Route - Traffic Demand (Vehicles Per Hour)**



**Main Route Average Delay Per Vehicle (Minutes)**



**Main Route - Average Queue Length (Vehicles)**



**Main Route - Average Speed (MPH)**

