

IH 43/894: HALE INTERCHANGE TO STH 27 (MILWAUKEE COUNTY) CONTINUOUS (24 HOUR) CLOSURE NO DIVERSION ROUTE (MAX QUEUE METHOD)	OCTOBER
	Analyzed for 2009 Construction Season

SUMMARY OF TRAFFIC MODEL OUTPUT

FRIDAY SOUTHBOUND DIRECTION

TIME OF DAY	FLOWS AND CAPACITY IN VEH/HR						AVERAGE SPEEDS IN MPH			
	MAIN ROUTE		SITE CAPA CITY	FLOW		AV.DEL PER VEH (MINS)	AVERAGE QUEUE (VEH)	MAIN ROUTE		SITE
	DEMAND FLOW	PCT HEAVY		MAIN ROUTE	'DIVER TED'			WITHOUT WORK ZONE	WITH WORK ZONE	
MID-1 AM	862	0.0	3000	862	0	0.35	0	69.7	63.6	49.7
1-2 AM	540	0.0	3000	540	0	0.36	0	70.0	63.8	49.7
2-3 AM	525	0.0	3000	525	0	0.36	0	70.1	63.8	49.7
3-4 AM	580	0.0	3000	580	0	0.36	0	70.0	63.8	49.7
4-5 AM	987	0.0	3000	987	0	0.35	0	69.5	63.5	49.7
5-6 AM	2516	0.0	2999	2516	0	0.50	0	67.6	59.8	44.0
6-7 AM	4286	0.0	2999	3828	458	8.06+	501	61.5	21.1	37.3
7-8 AM	4643	0.0	3000	2999	1644	14.76+	801	59.1	13.5	37.3
8-9 AM	4066	0.0	2999	2999	1067	15.03+	801	63.1	13.5	37.3
9-10 AM	3739	0.0	3000	3000	739	15.17+	801	65.3	13.5	37.3
10-11 AM	4024	0.0	3000	2999	1025	15.05+	801	63.3	13.5	37.3
11AM-NOON	4345	0.0	3000	2998	1347	14.90+	801	61.2	13.5	37.3
NOON-1PM	4553	0.0	3000	2999	1555	14.81+	801	59.7	13.5	37.3
1-2 PM	4874	0.0	3000	3000	1874	14.64+	801	57.6	13.5	37.3
2-3 PM	5417	0.0	3000	3000	2417	14.34+	801	53.8	13.5	37.3
3-4 PM	5638	0.0	3000	3000	2638	14.20+	801	52.4	13.5	37.3
4-5 PM	5732	0.0	3000	3000	2732	14.14+	801	51.7	13.5	37.3
5-6 PM	5456	0.0	3000	3000	2456	14.31+	801	53.6	13.5	37.3
6-7 PM	4726	0.0	3000	2999	1727	14.72+	801	58.6	13.5	37.3
7-8 PM	3494	0.0	3000	3000	494	15.23+	801	66.4	13.5	37.3
8-9 PM	2772	0.0	2999	2767	5	13.87+	727	67.3	14.6	37.3
9-10 PM	2688	0.0	3000	2688	0	8.80	454	67.4	20.4	37.3
10-11 PM	2042	0.0	3000	2042	0	0.92	47	68.2	54.9	49.4
11PM-MID	1494	0.0	3000	1494	0	0.34	0	68.9	63.1	49.7

+ INDICATES QUEUEING EXCEEDS USER-SPECIFIED MAXIMUM LIMIT

----- SITE BREAKDOWN DELAYS -----	
BREAKDOWN DURATION (MINS)	0
RANGE OF QUEUE DELAY - MIN (VEH-H) MAX	0.0
AV BREAKDOWNS PER DAY	0.00
AV QUEUE DELAY/DAY (VEH-H)	0.0
AV TOTAL DELAY/DAY (VEH-H)	0.0

----- SITE ACCIDENT DELAYS -----	
BREAKDOWN DURATION (MINS)	0
RANGE OF QUEUE DELAY - MIN (VEH-H) MAX	0
AV BREAKDOWNS PER DAY	0
AV QUEUE DELAY/DAY (VEH-H)	0
AV TOTAL DELAY/DAY (VEH-H)	0

AVERAGE ACCIDENT NUMBERS (PIA/DAY)	
MAIN ROUTE WITHOUT WORKS	0.0547
MAIN ROUTE WITH WORKS	0.0357
'DIVERSION'	0.0351
<small>PIA: Personal Injury Accidents</small>	
IMPACTS ON ROAD USERS	
ROAD USER COSTS PER DAY	\$223,698
CONGESTED HOURS PER DAY*	15

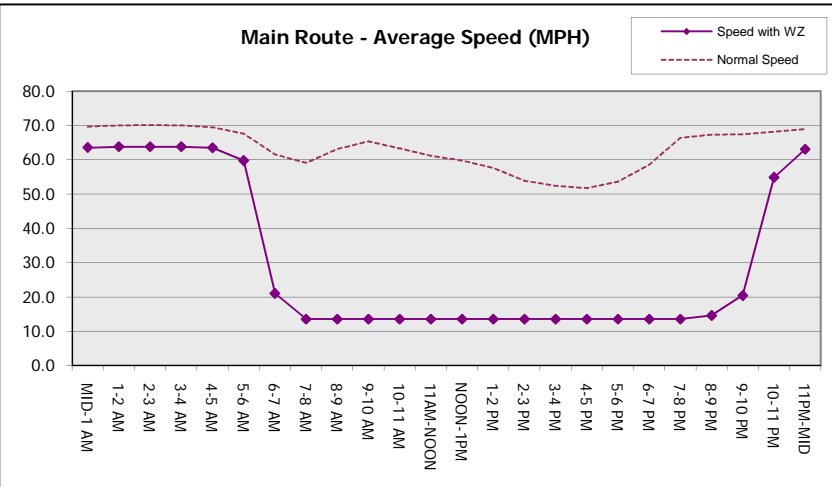
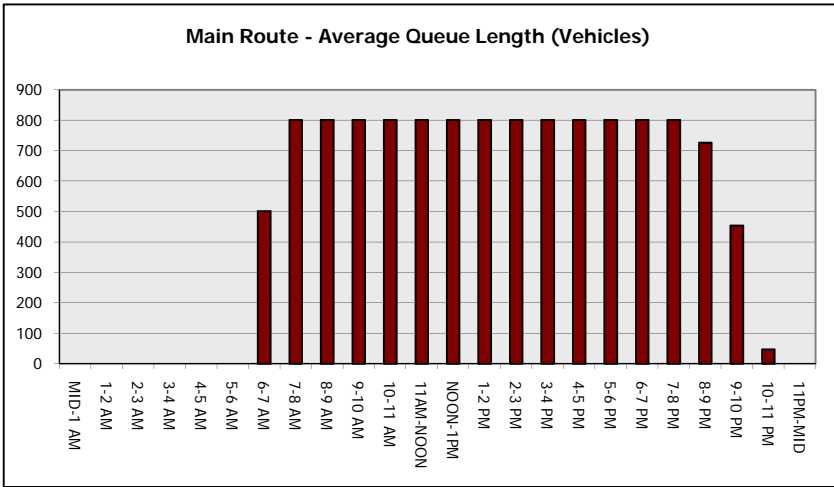
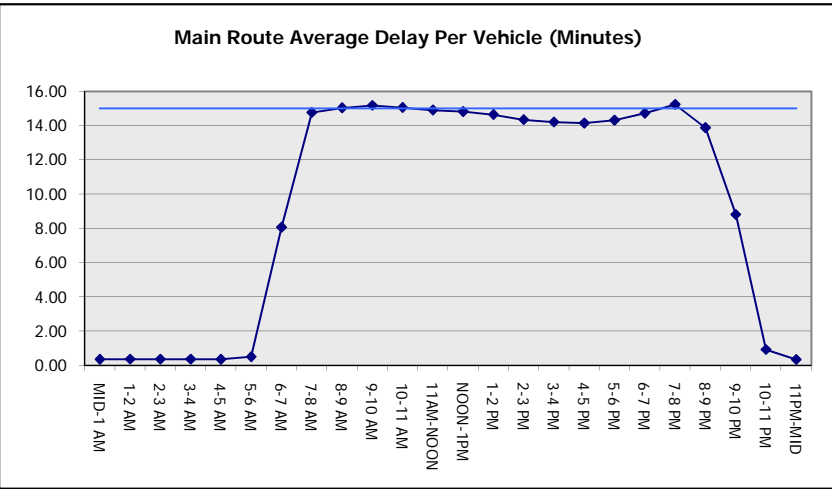
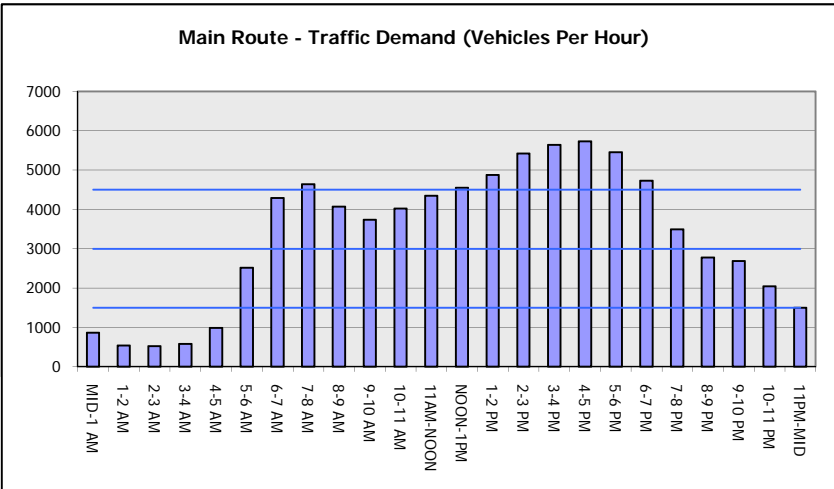
*Delays Exceeding User-Specified Maximum

**IH 43/894: HALE INTERCHANGE TO STH 27 (MILWAUKEE COUNTY)
CONTINUOUS (24 HOUR) CLOSURE
NO DIVERSION ROUTE (MAX QUEUE METHOD)**

OCTOBER
Analyzed for 2009
Construction Season

GRAPHICAL REPRESENTATION OF TRAFFIC MODEL INPUT AND OUTPUT

FRIDAY SOUTHBOUND DIRECTION



IH 43/894: HALE INTERCHANGE TO STH 27 (MILWAUKEE COUNTY) CONTINUOUS (24 HOUR) CLOSURE NO DIVERSION ROUTE (MAX QUEUE METHOD)	OCTOBER
	Analyzed for 2009 Construction Season

SUMMARY OF TRAFFIC MODEL OUTPUT

FRIDAY NORTHBOUND DIRECTION

TIME OF DAY	FLOWS AND CAPACITY IN VEH/HR							AVERAGE SPEEDS IN MPH			
	MAIN ROUTE		SITE CAPA CITY	FLOW		AV.DEL PER VEH (MINS)	AVERAGE QUEUE (VEH)	MAIN ROUTE		SITE	
	DEMAND FLOW	PCT HEAVY		MAIN ROUTE	'DIVER TED'			WITHOUT WORK ZONE	WITH WORK ZONE		
MID-1 AM	646	0.0	3000	646	0	0.36	0	69.9	63.8	49.7	
1-2 AM	428	0.0	3000	428	0	0.36	0	70.2	63.9	49.7	
2-3 AM	442	0.0	3000	442	0	0.36	0	70.2	63.9	49.7	
3-4 AM	568	0.0	3000	568	0	0.36	0	70.0	63.8	49.7	
4-5 AM	1040	0.0	3000	1040	0	0.35	0	69.4	63.5	49.7	
5-6 AM	2441	0.0	2999	2441	0	0.49	0	67.7	59.9	44.2	
6-7 AM	4760	0.0	2999	3697	1063	9.53+	574	58.3	18.5	37.3	
7-8 AM	5386	0.0	3000	3001	2385	14.35+	801	54.1	13.5	37.3	
8-9 AM	4381	0.0	3000	3003	1378	14.89+	801	60.9	13.5	37.3	
9-10 AM	3735	0.0	3000	3034	701	15.10+	797	65.3	13.5	37.3	
10-11 AM	3746	0.0	2999	3001	745	15.16+	801	65.3	13.5	37.3	
11AM-NOON	3897	0.0	3000	3002	895	15.10+	801	64.2	13.5	37.3	
NOON-1PM	4286	0.0	3000	3003	1283	14.93+	801	61.5	13.5	37.3	
1-2 PM	4453	0.0	3000	3003	1450	14.85+	801	60.4	13.5	37.3	
2-3 PM	4926	0.0	3000	3001	1925	14.62+	801	57.2	13.5	37.3	
3-4 PM	5403	0.0	3000	3000	2403	14.34+	801	54.0	13.5	37.3	
4-5 PM	5582	0.0	3000	3000	2582	14.23+	801	52.7	13.5	37.3	
5-6 PM	5569	0.0	3000	3000	2569	14.24+	801	52.8	13.5	37.3	
6-7 PM	4540	0.0	3000	3002	1537	14.81+	801	59.9	13.5	37.3	
7-8 PM	3464	0.0	3000	3046	418	15.13+	795	66.4	13.6	37.3	
8-9 PM	2840	0.0	3000	2840	0	14.11+	739	67.2	14.3	37.3	
9-10 PM	2613	0.0	2999	2613	0	8.85	464	67.5	20.4	37.7	
10-11 PM	2007	0.0	3000	2007	0	0.78	35	68.2	56.6	49.7	
11PM-MID	1457	0.0	3000	1457	0	0.34	0	68.9	63.2	49.7	

+ INDICATES QUEUEING EXCEEDS USER-SPECIFIED MAXIMUM LIMIT

BREAKDOWN DURATION (MINS)	0
RANGE OF QUEUE DELAY - MIN (VEH-H) MAX	0.0
AV BREAKDOWNS PER DAY	0.00
AV QUEUE DELAY/DAY (VEH-H)	0.0
AV TOTAL DELAY/DAY (VEH-H)	0.0

BREAKDOWN DURATION (MINS)	0
RANGE OF QUEUE DELAY - MIN (VEH-H) MAX	0
AV BREAKDOWNS PER DAY	0
AV QUEUE DELAY/DAY (VEH-H)	0
AV TOTAL DELAY/DAY (VEH-H)	0

MAIN ROUTE WITHOUT WORKS	0.0538
MAIN ROUTE WITH WORKS	0.0354
'DIVERSION'	0.0338

PIA: Personal Injury Accidents

ROAD USER COSTS PER DAY	\$222,312
CONGESTED HOURS PER DAY*	15

*Delays Exceeding User-Specified Maximum

**IH 43/894: HALE INTERCHANGE TO STH 27 (MILWAUKEE COUNTY)
CONTINUOUS (24 HOUR) CLOSURE
NO DIVERSION ROUTE (MAX QUEUE METHOD)**

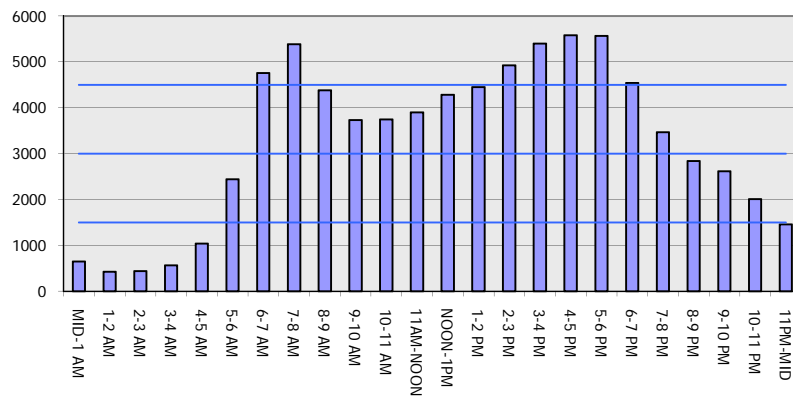
OCTOBER

Analyzed for 2009
Construction Season

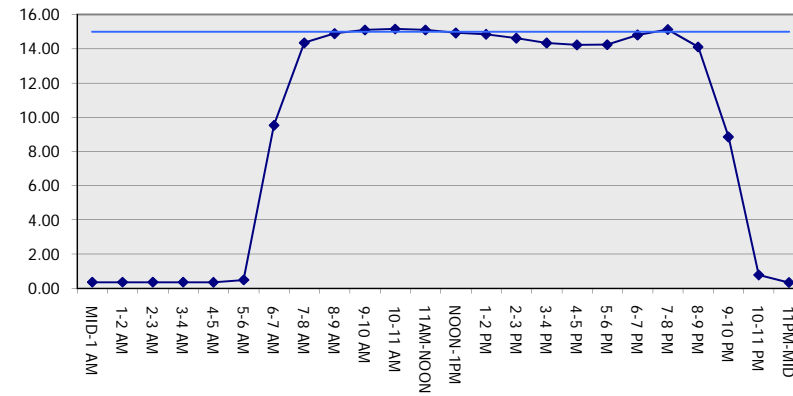
GRAPHICAL REPRESENTATION OF TRAFFIC MODEL INPUT AND OUTPUT

FRIDAY NORTHBOUND DIRECTION

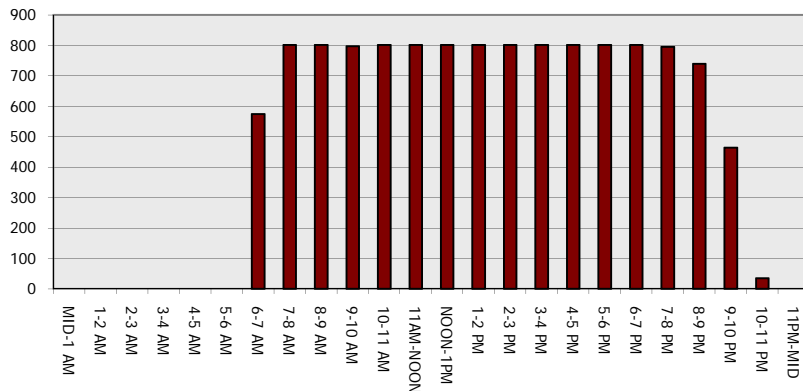
Main Route - Traffic Demand (Vehicles Per Hour)



Main Route Average Delay Per Vehicle (Minutes)



Main Route - Average Queue Length (Vehicles)



Main Route - Average Speed (MPH)

