

IH 43/894: HALE INTERCHANGE TO STH 27 (MILWAUKEE COUNTY) CONTINUOUS (24 HOUR) CLOSURE NO DIVERSION ROUTE (MAX QUEUE METHOD)	AUGUST
	Analyzed for 2009 Construction Season

SUMMARY OF TRAFFIC MODEL OUTPUT

SUNDAY SOUTHBOUND DIRECTION

TIME OF DAY	FLOWS AND CAPACITY IN VEH/HR						AVERAGE SPEEDS IN MPH			
	MAIN ROUTE		SITE CAPA CITY	FLOW		AV.DEL PER VEH (MINS)	AVERAGE QUEUE (VEH)	MAIN ROUTE		SITE
	DEMAND FLOW	PCT HEAVY		MAIN ROUTE	'DIVER TED'			WITHOUT WORK ZONE	WITH WORK ZONE	
MID-1 AM	1048	0.0	3000	1048	0	0.35	0	69.4	63.5	49.7
1-2 AM	616	0.0	3000	616	0	0.36	0	70.0	63.8	49.7
2-3 AM	457	0.0	3000	457	0	0.36	0	70.2	63.9	49.7
3-4 AM	282	0.0	3000	282	0	0.36	0	70.2	63.9	49.7
4-5 AM	302	0.0	3000	302	0	0.36	0	70.2	63.9	49.7
5-6 AM	540	0.0	3000	540	0	0.36	0	70.0	63.8	49.7
6-7 AM	905	0.0	3000	905	0	0.35	0	69.6	63.6	49.7
7-8 AM	1166	0.0	3000	1166	0	0.35	0	69.3	63.3	49.7
8-9 AM	1743	0.0	3000	1743	0	0.34	0	68.6	62.9	49.7
9-10 AM	2566	0.0	2999	2566	0	0.45	0	67.6	60.5	45.5
10-11 AM	3286	0.0	2999	3286	0	2.56	116	66.6	40.1	37.3
11AM-NOON	3427	0.0	2999	3427	0	9.23	488	66.4	19.7	37.3
NOON-1PM	3642	0.0	2999	3041	601	15.12+	796	66.0	13.6	37.3
1-2 PM	3977	0.0	3000	3002	975	15.07+	801	63.7	13.5	37.3
2-3 PM	3881	0.0	3000	3001	880	15.11+	801	64.3	13.5	37.3
3-4 PM	3951	0.0	3000	3001	950	15.08+	801	63.8	13.5	37.3
4-5 PM	3827	0.0	3000	3001	827	15.13+	801	64.7	13.5	37.3
5-6 PM	3511	0.0	3000	3000	511	15.23+	801	66.4	13.5	37.3
6-7 PM	3124	0.0	3000	3046	79	15.15+	795	66.9	13.6	37.3
7-8 PM	2778	0.0	2999	2778	0	13.68+	717	67.3	14.7	37.3
8-9 PM	2360	0.0	2999	2360	0	4.54	290	67.8	30.9	42.4
9-10 PM	1953	0.0	3000	1953	0	0.34	0	68.3	62.7	49.7
10-11 PM	1482	0.0	3000	1482	0	0.34	0	68.9	63.1	49.7
11PM-MID	920	0.0	3000	920	0	0.35	0	69.6	63.5	49.7

+ INDICATES QUEUEING EXCEEDS USER-SPECIFIED MAXIMUM LIMIT

----- SITE BREAKDOWN DELAYS -----	
BREAKDOWN DURATION (MINS)	0
RANGE OF QUEUE DELAY - MIN (VEH-H) MAX	0.0
AV BREAKDOWNS PER DAY	0.00
AV QUEUE DELAY/DAY (VEH-H)	0.0
AV TOTAL DELAY/DAY (VEH-H)	0.0

----- SITE ACCIDENT DELAYS -----	
BREAKDOWN DURATION (MINS)	0
RANGE OF QUEUE DELAY - MIN (VEH-H) MAX	0
AV BREAKDOWNS PER DAY	0
AV QUEUE DELAY/DAY (VEH-H)	0
AV TOTAL DELAY/DAY (VEH-H)	0

AVERAGE ACCIDENT NUMBERS (PIA/DAY)	
MAIN ROUTE WITHOUT WORKS	0.0354
MAIN ROUTE WITH WORKS	0.0290
'DIVERSION'	0.0076
PIA: Personal Injury Accidents	
IMPACTS ON ROAD USERS	
ROAD USER COSTS PER DAY	\$137,171
CONGESTED HOURS PER DAY*	8

*Delays Exceeding User-Specified Maximum

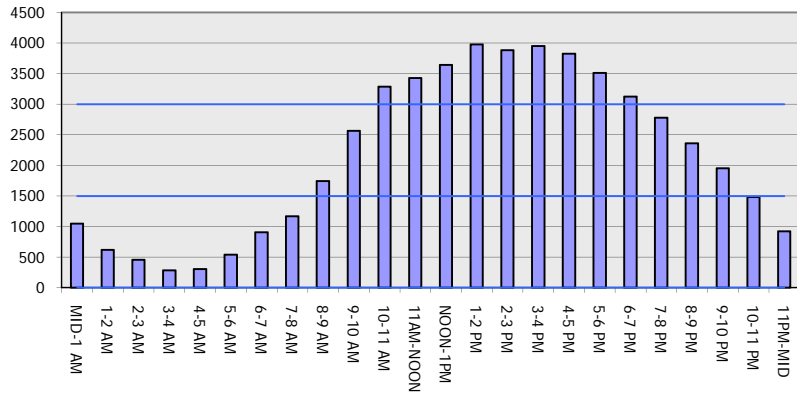
**IH 43/894: HALE INTERCHANGE TO STH 27 (MILWAUKEE COUNTY)
CONTINUOUS (24 HOUR) CLOSURE
NO DIVERSION ROUTE (MAX QUEUE METHOD)**

AUGUST
Analyzed for 2009
Construction Season

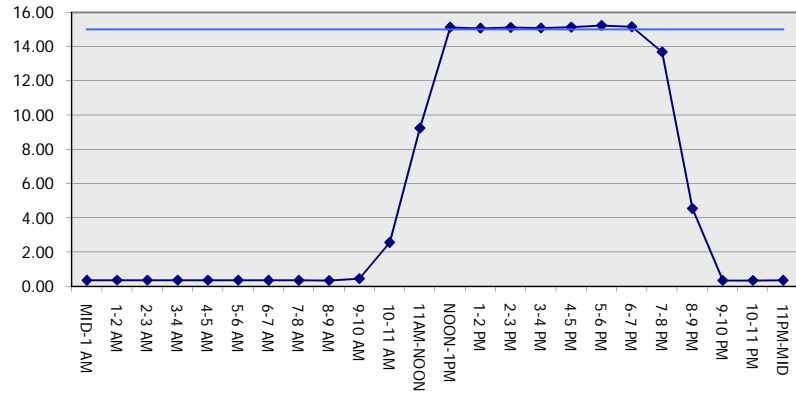
GRAPHICAL REPRESENTATION OF TRAFFIC MODEL INPUT AND OUTPUT

SUNDAY SOUTHBOUND DIRECTION

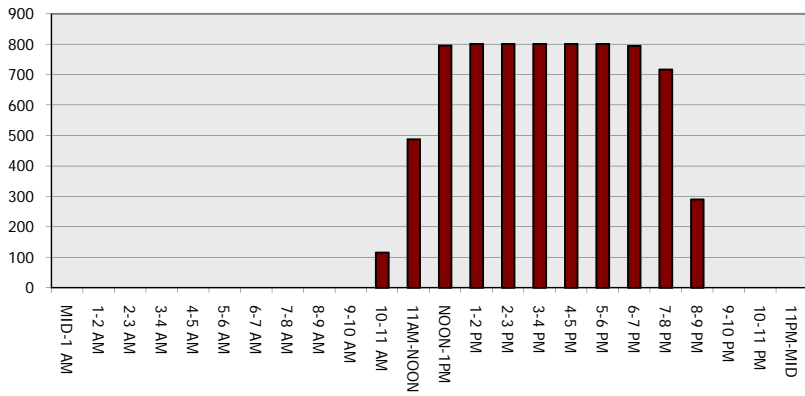
Main Route - Traffic Demand (Vehicles Per Hour)



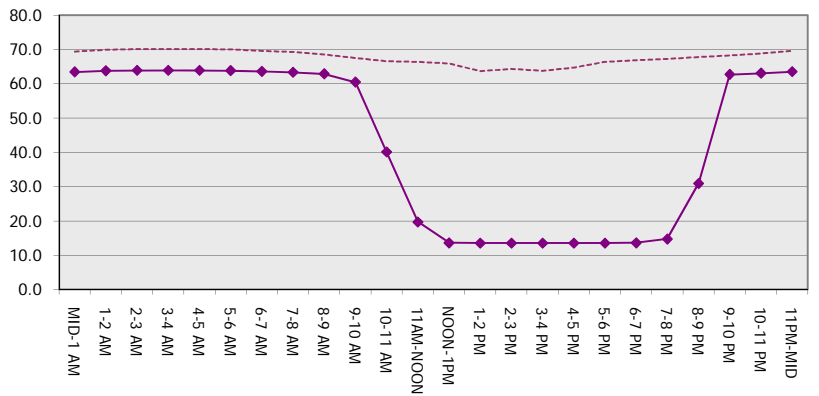
Main Route Average Delay Per Vehicle (Minutes)



Main Route - Average Queue Length (Vehicles)



Main Route - Average Speed (MPH)



IH 43/894: HALE INTERCHANGE TO STH 27 (MILWAUKEE COUNTY) CONTINUOUS (24 HOUR) CLOSURE NO DIVERSION ROUTE (MAX QUEUE METHOD)	AUGUST
	Analyzed for 2009 Construction Season

SUMMARY OF TRAFFIC MODEL OUTPUT

SUNDAY NORTHBOUND DIRECTION

TIME OF DAY	FLOWS AND CAPACITY IN VEH/HR							AVERAGE SPEEDS IN MPH		
	MAIN ROUTE		SITE CAPA CITY	FLOW		AV.DEL PER VEH (MINS)	AVERAGE QUEUE (VEH)	MAIN ROUTE		SITE
	DEMAND FLOW	PCT HEAVY		MAIN ROUTE	'DIVER TED'			WITHOUT WORK ZONE	WITH WORK ZONE	
MID-1 AM	953	0.0	3000	953	0	0.35	0	69.6	63.5	49.7
1-2 AM	566	0.0	3000	566	0	0.36	0	70.0	63.8	49.7
2-3 AM	453	0.0	3000	453	0	0.36	0	70.2	63.9	49.7
3-4 AM	327	0.0	3000	327	0	0.36	0	70.2	63.9	49.7
4-5 AM	428	0.0	3000	428	0	0.36	0	70.2	63.9	49.7
5-6 AM	719	0.0	3000	719	0	0.36	0	69.9	63.7	49.7
6-7 AM	904	0.0	3000	904	0	0.35	0	69.6	63.6	49.7
7-8 AM	1127	0.0	3000	1127	0	0.35	0	69.3	63.4	49.7
8-9 AM	1583	0.0	3000	1583	0	0.34	0	68.7	63.0	49.7
9-10 AM	2411	0.0	2999	2411	0	0.40	0	67.8	61.4	47.2
10-11 AM	3041	0.0	2999	3041	0	1.09	24	66.9	52.2	38.2
11AM-NOON	3671	0.0	3000	3671	0	6.99	396	65.8	23.7	37.3
NOON-1PM	4247	0.0	2999	3002	1245	14.95+	801	61.9	13.5	37.3
1-2 PM	4333	0.0	3000	3002	1330	14.91+	801	61.2	13.5	37.3
2-3 PM	4595	0.0	3000	3001	1594	14.79+	801	59.5	13.5	37.3
3-4 PM	4544	0.0	3000	3002	1542	14.81+	801	59.8	13.5	37.3
4-5 PM	4517	0.0	3000	3002	1515	14.82+	801	60.0	13.5	37.3
5-6 PM	4433	0.0	3000	3002	1431	14.86+	801	60.5	13.5	37.3
6-7 PM	3867	0.0	3000	3000	867	15.11+	801	64.5	13.5	37.3
7-8 PM	3217	0.0	3000	3018	199	15.21+	798	66.8	13.5	37.3
8-9 PM	2817	0.0	2999	2817	0	14.12+	740	67.3	14.3	37.3
9-10 PM	2171	0.0	2999	2171	0	3.58	267	68.1	35.0	44.5
10-11 PM	1445	0.0	3000	1445	0	0.34	0	68.9	63.2	49.7
11PM-MID	999	0.0	3000	999	0	0.35	0	69.5	63.5	49.7

+ INDICATES QUEUEING EXCEEDS USER-SPECIFIED MAXIMUM LIMIT

----- SITE BREAKDOWN DELAYS -----	
BREAKDOWN DURATION (MINS)	0
RANGE OF QUEUE DELAY - MIN (VEH-H) MAX	0.0
AV BREAKDOWNS PER DAY	0.00
AV QUEUE DELAY/DAY (VEH-H)	0.0
AV TOTAL DELAY/DAY (VEH-H)	0.0

----- SITE ACCIDENT DELAYS -----	
BREAKDOWN DURATION (MINS)	0
RANGE OF QUEUE DELAY - MIN (VEH-H) MAX	0
AV BREAKDOWNS PER DAY	0
AV QUEUE DELAY/DAY (VEH-H)	0
AV TOTAL DELAY/DAY (VEH-H)	0

AVERAGE ACCIDENT NUMBERS (PIA/DAY)	
MAIN ROUTE WITHOUT WORKS	0.0393
MAIN ROUTE WITH WORKS	0.0295
'DIVERSION'	0.0154

PIA: Personal Injury Accidents

ECONOMIC IMPACT ON ROAD USERS	
ROAD USER COSTS PER DAY	\$164,992
CONGESTED HOURS PER DAY*	9

*Delays Exceeding User-Specified Maximum

**IH 43/894: HALE INTERCHANGE TO STH 27 (MILWAUKEE COUNTY)
CONTINUOUS (24 HOUR) CLOSURE
NO DIVERSION ROUTE (MAX QUEUE METHOD)**

AUGUST
Analyzed for 2009
Construction Season

GRAPHICAL REPRESENTATION OF TRAFFIC MODEL INPUT AND OUTPUT
SUNDAY NORTHBOUND DIRECTION

