

IH 94: CTH Y/LAYTON AVE TO CTH ZZ/COLLEGE AVE (MILWAUKEE COUNTY) CONTINUOUS (24 HOUR) 2 LANE CLOSURE NO DIVERSION ROUTE (MAX QUEUE METHOD)	OCTOBER
	Analyzed for 2009 Construction Season

SUMMARY OF TRAFFIC MODEL OUTPUT

SUNDAY WESTBOUND DIRECTION

TIME OF DAY	FLOWS AND CAPACITY IN VEH/HR						AVERAGE SPEEDS IN MPH				
	MAIN ROUTE		SITE CAPA CITY	FLOW		AV.DEL PER VEH (MINS)	AVERAGE QUEUE (VEH)	MAIN ROUTE		SITE	
	DEMAND FLOW	PCT HEAVY		MAIN ROUTE	'DIVER TED'			WITHOUT WORK ZONE	WITH WORK ZONE		
MID-1 AM	1339	0.0	1500	1339	0	8.45	203	70.2	11.9	32.9	
1-2 AM	736	0.0	1500	736	0	0.62	8	70.2	51.5	45.8	
2-3 AM	617	0.0	1500	617	0	0.45	0	70.2	55.6	46.4	
3-4 AM	411	0.0	1500	411	0	0.42	0	70.2	56.3	47.3	
4-5 AM	444	0.0	1500	444	0	0.42	0	70.2	56.2	47.2	
5-6 AM	651	0.0	1500	651	0	0.45	0	70.2	55.5	46.3	
6-7 AM	1160	0.0	1499	1160	0	0.60	0	70.2	52.0	41.7	
7-8 AM	1482	0.0	1499	1482	0	1.29	11	70.2	40.1	34.1	
8-9 AM	2066	0.0	1500	1909	157	9.51+	262	69.5	11.3	32.4	
9-10 AM	2835	0.0	1500	1481	1354	16.88+	416	68.5	7.5	32.5	
10-11 AM	3672	0.0	1499	1500	2172	17.00+	420	67.1	7.5	32.5	
11AM-NOON	4276	0.0	1499	1500	2776	16.86+	420	63.0	7.5	32.5	
NOON-1PM	4629	0.0	1500	1500	3129	16.77+	420	60.5	7.5	32.5	
1-2 PM	4652	0.0	1499	1500	3152	16.76+	420	60.4	7.5	32.5	
2-3 PM	4606	0.0	1500	1500	3106	16.77+	420	60.7	7.5	32.5	
3-4 PM	4895	0.0	1500	1500	3395	16.69+	420	58.7	7.5	32.5	
4-5 PM	4872	0.0	1500	1500	3372	16.70+	420	58.9	7.5	32.5	
5-6 PM	4769	0.0	1500	1500	3269	16.73+	420	59.6	7.5	32.5	
6-7 PM	4268	0.0	1500	1500	2768	16.86+	420	63.0	7.5	32.5	
7-8 PM	3651	0.0	1499	1500	2151	17.00+	420	67.2	7.5	32.5	
8-9 PM	2836	0.0	1499	1488	1348	16.85+	415	68.5	7.5	32.5	
9-10 PM	2564	0.0	1499	1496	1068	16.76+	412	68.9	7.6	32.5	
10-11 PM	1886	0.0	1500	1499	387	16.73+	411	69.7	7.6	32.5	
11PM-MID	1344	0.0	1499	1344	0	14.64+	359	70.2	8.2	32.5	

+ INDICATES QUEUEING EXCEEDS USER-SPECIFIED MAXIMUM LIMIT

----- SITE BREAKDOWN DELAYS -----	
BREAKDOWN DURATION (MINS)	0
RANGE OF QUEUE DELAY - MIN (VEH-H) MAX	0.0
AV BREAKDOWNS PER DAY	0.00
AV QUEUE DELAY/DAY (VEH-H)	0.0
AV TOTAL DELAY/DAY (VEH-H)	0.0

----- SITE ACCIDENT DELAYS -----	
BREAKDOWN DURATION (MINS)	0
RANGE OF QUEUE DELAY - MIN (VEH-H) MAX	0
AV BREAKDOWNS PER DAY	0
AV QUEUE DELAY/DAY (VEH-H)	0
AV TOTAL DELAY/DAY (VEH-H)	0

AVERAGE ACCIDENT NUMBERS (PIA/DAY)	
MAIN ROUTE WITHOUT WORKS	0.0206
MAIN ROUTE WITH WORKS	0.0078
'DIVERSION'	0.0248
<small>PIA: Personal Injury Accidents</small>	
IMPACTS ON ROAD USERS	
ROAD USER COSTS PER DAY	\$267,905
CONGESTED HOURS PER DAY*	16

*Delays Exceeding User-Specified Maximum

IH 94: CTH Y/LAYTON AVE TO CTH ZZ/COLLEGE AVE (MILWAUKEE COUNTY)
CONTINUOUS (24 HOUR) 2 LANE CLOSURE
NO DIVERSION ROUTE (MAX QUEUE METHOD)

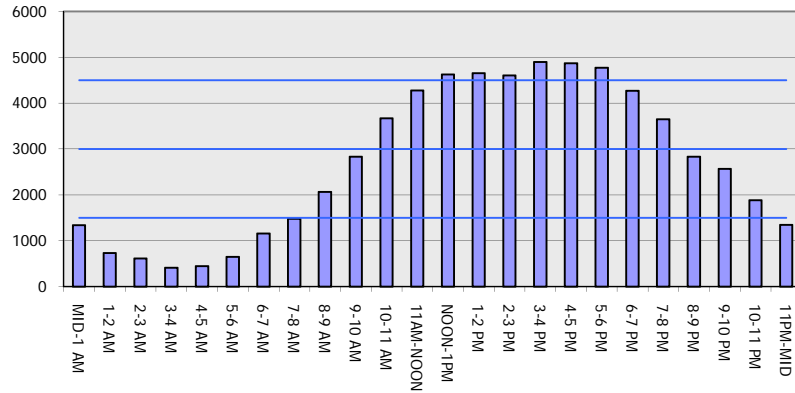
OCTOBER

Analyzed for 2009
 Construction Season

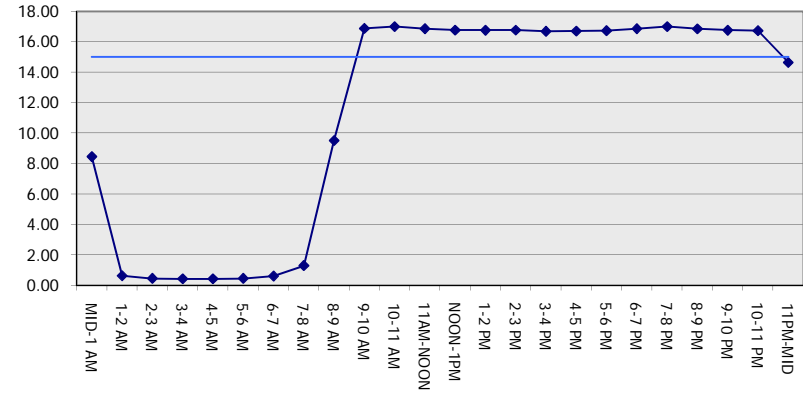
GRAPHICAL REPRESENTATION OF TRAFFIC MODEL INPUT AND OUTPUT

SUNDAY WESTBOUND DIRECTION

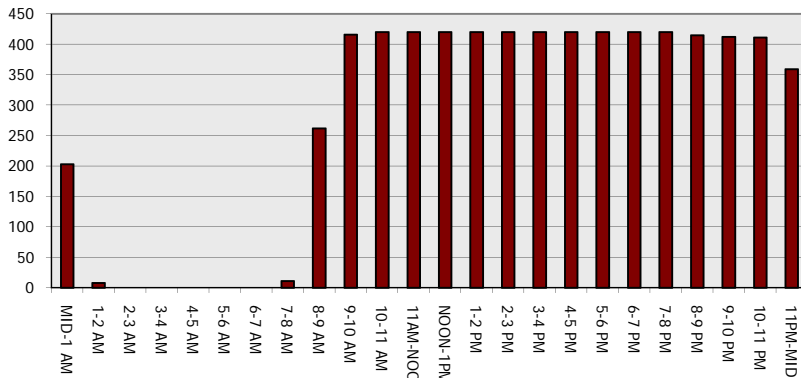
Main Route - Traffic Demand (Vehicles Per Hour)



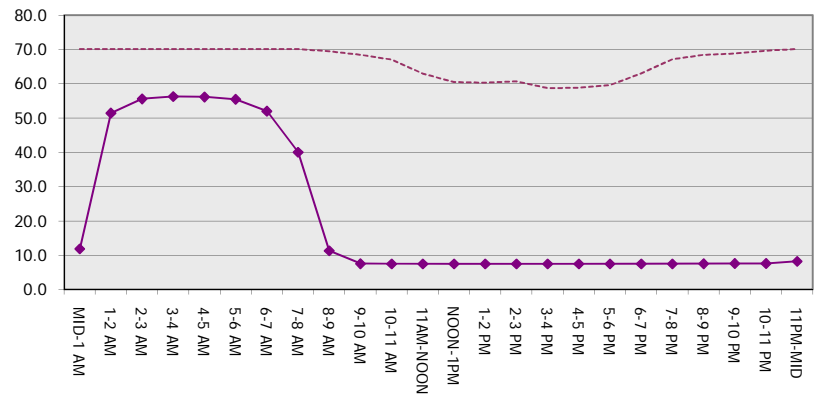
Main Route Average Delay Per Vehicle (Minutes)



Main Route - Average Queue Length (Vehicles)



Main Route - Average Speed (MPH)



IH 94: CTH Y/LAYTON AVE TO CTH ZZ/COLLEGE AVE (MILWAUKEE COUNTY) CONTINUOUS (24 HOUR) 2 LANE CLOSURE NO DIVERSION ROUTE (MAX QUEUE METHOD)	OCTOBER
	Analyzed for 2009 Construction Season

SUMMARY OF TRAFFIC MODEL OUTPUT

SUNDAY EASTBOUND DIRECTION

TIME OF DAY	FLOWS AND CAPACITY IN VEH/HR							AVERAGE SPEEDS IN MPH			
	MAIN ROUTE		SITE CAPA CITY	FLOW		AV.DEL PER VEH (MINS)	AVERAGE QUEUE (VEH)	MAIN ROUTE		SITE	
	DEMAND FLOW	PCT HEAVY		MAIN ROUTE	'DIVER TED'			WITHOUT WORK ZONE	WITH WORK ZONE		
MID-1 AM	1333	0.0	1500	1333	0	3.18	77	70.2	24.5	34.3	
1-2 AM	903	0.0	1500	903	0	0.48	0	70.2	54.8	45.2	
2-3 AM	968	0.0	1500	968	0	0.49	0	70.2	54.6	44.9	
3-4 AM	607	0.0	1500	607	0	0.44	0	70.2	55.7	46.5	
4-5 AM	654	0.0	1500	654	0	0.45	0	70.2	55.5	46.3	
5-6 AM	899	0.0	1500	899	0	0.48	0	70.2	54.8	45.2	
6-7 AM	1335	0.0	1499	1335	0	0.79	0	70.2	48.1	36.9	
7-8 AM	1692	0.0	1499	1692	0	2.89	66	69.9	26.0	32.5	
8-9 AM	2283	0.0	1500	1777	507	15.04+	374	69.2	8.1	32.5	
9-10 AM	3392	0.0	1499	1486	1906	16.97+	419	67.8	7.5	32.5	
10-11 AM	4161	0.0	1500	1500	2661	16.88+	420	63.7	7.5	32.5	
11AM-NOON	4548	0.0	1500	1500	3048	16.79+	420	61.1	7.5	32.5	
NOON-1PM	5161	0.0	1500	1500	3661	16.62+	420	56.9	7.5	32.5	
1-2 PM	5397	0.0	1500	1500	3897	16.54+	420	55.3	7.5	32.5	
2-3 PM	5435	0.0	1500	1500	3935	16.53+	420	55.0	7.5	32.5	
3-4 PM	5591	0.0	1500	1500	4091	16.48+	420	54.0	7.5	32.5	
4-5 PM	5511	0.0	1500	1500	4011	16.51+	420	54.5	7.5	32.5	
5-6 PM	4908	0.0	1500	1500	3408	16.69+	420	58.6	7.5	32.5	
6-7 PM	4595	0.0	1500	1500	3095	16.78+	420	60.8	7.5	32.5	
7-8 PM	3848	0.0	1500	1500	2348	16.96+	420	65.9	7.5	32.5	
8-9 PM	2813	0.0	1499	1481	1332	16.86+	415	68.6	7.5	32.5	
9-10 PM	2282	0.0	1499	1498	784	16.73+	411	69.2	7.6	32.5	
10-11 PM	1637	0.0	1499	1456	181	16.56+	406	70.0	7.6	32.5	
11PM-MID	1258	0.0	1499	1258	0	11.23	279	70.2	9.7	32.8	

+ INDICATES QUEUEING EXCEEDS USER-SPECIFIED MAXIMUM LIMIT

----- SITE BREAKDOWN DELAYS -----	
BREAKDOWN DURATION (MINS)	0
RANGE OF QUEUE DELAY - MIN (VEH-H) MAX	0.0
AV BREAKDOWNS PER DAY	0.00
AV QUEUE DELAY/DAY (VEH-H)	0.0
AV TOTAL DELAY/DAY (VEH-H)	0.0

----- SITE ACCIDENT DELAYS -----	
BREAKDOWN DURATION (MINS)	0
RANGE OF QUEUE DELAY - MIN (VEH-H) MAX	0
AV BREAKDOWNS PER DAY	0
AV QUEUE DELAY/DAY (VEH-H)	0
AV TOTAL DELAY/DAY (VEH-H)	0

AVERAGE ACCIDENT NUMBERS (PIA/DAY)	
MAIN ROUTE WITHOUT WORKS	0.0227
MAIN ROUTE WITH WORKS	0.0082
'DIVERSION'	0.0287

PIA: Personal Injury Accidents

ECONOMIC IMPACT ON ROAD USERS	
ROAD USER COSTS PER DAY	\$290,212
CONGESTED HOURS PER DAY*	15

*Delays Exceeding User-Specified Maximum

IH 94: CTH Y/LAYTON AVE TO CTH ZZ/COLLEGE AVE (MILWAUKEE COUNTY)
CONTINUOUS (24 HOUR) 2 LANE CLOSURE
NO DIVERSION ROUTE (MAX QUEUE METHOD)

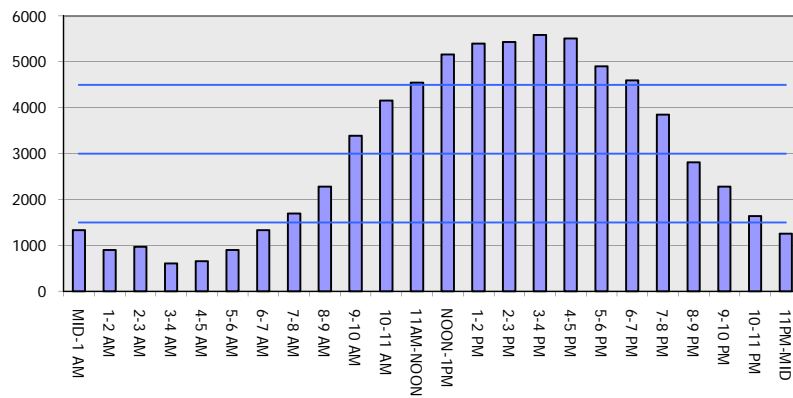
OCTOBER

Analyzed for 2009
 Construction Season

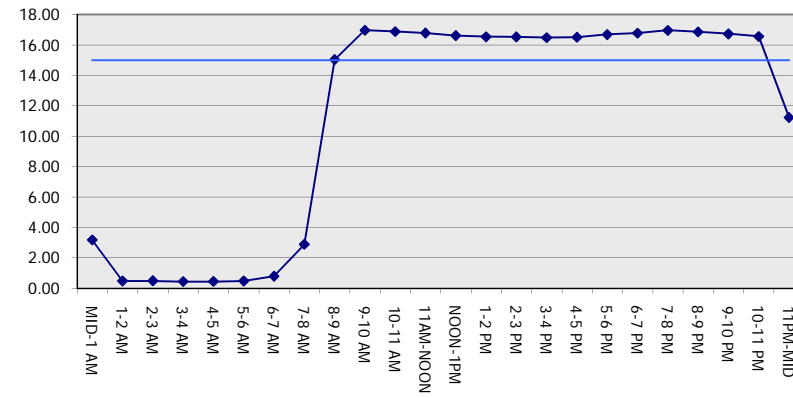
GRAPHICAL REPRESENTATION OF TRAFFIC MODEL INPUT AND OUTPUT

SUNDAY EASTBOUND DIRECTION

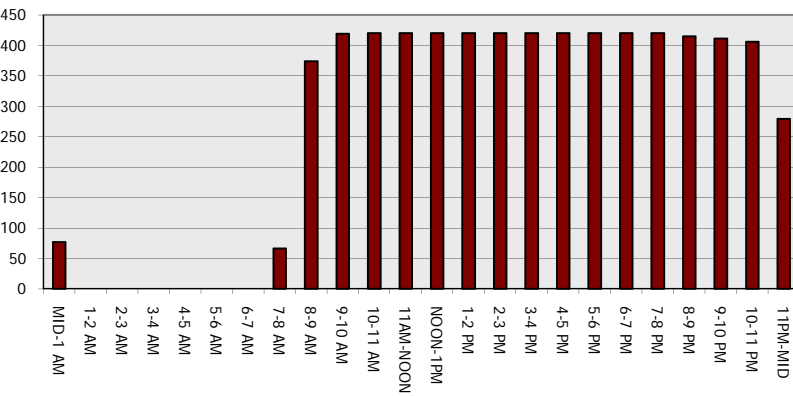
Main Route - Traffic Demand (Vehicles Per Hour)



Main Route Average Delay Per Vehicle (Minutes)



Main Route - Average Queue Length (Vehicles)



Main Route - Average Speed (MPH)

