

IH 94: CTH Y/LAYTON AVE TO CTH ZZ/COLLEGE AVE (MILWAUKEE COUNTY) CONTINUOUS (24 HOUR) CLOSURE NO DIVERSION ROUTE (MAX QUEUE METHOD)	OCTOBER
	Analyzed for 2009 Construction Season

SUMMARY OF TRAFFIC MODEL OUTPUT

SUNDAY WESTBOUND DIRECTION

TIME OF DAY	FLOWS AND CAPACITY IN VEH/HR						AVERAGE SPEEDS IN MPH			
	MAIN ROUTE		SITE CAPA CITY	FLOW		AV.DEL PER VEH (MINS)	AVERAGE QUEUE (VEH)	MAIN ROUTE		SITE
	DEMAND FLOW	PCT HEAVY		MAIN ROUTE	'DIVER TED'			WITHOUT WORK ZONE	WITH WORK ZONE	
MID-1 AM	1339	0.0	3000	1339	0	0.36	0	70.2	58.0	49.7
1-2 AM	736	0.0	3000	736	0	0.36	0	70.2	58.0	49.7
2-3 AM	617	0.0	3000	617	0	0.36	0	70.2	58.0	49.7
3-4 AM	411	0.0	3000	411	0	0.36	0	70.2	58.0	49.7
4-5 AM	444	0.0	3000	444	0	0.36	0	70.2	58.0	49.7
5-6 AM	651	0.0	3000	651	0	0.36	0	70.2	58.0	49.7
6-7 AM	1160	0.0	3000	1160	0	0.36	0	70.2	58.0	49.7
7-8 AM	1482	0.0	3000	1482	0	0.36	0	70.2	58.0	49.7
8-9 AM	2066	0.0	2999	2066	0	0.35	0	69.5	57.8	49.7
9-10 AM	2835	0.0	2999	2835	0	0.71	4	68.5	48.8	40.1
10-11 AM	3672	0.0	3000	3672	0	5.32	308	67.1	18.4	36.9
11AM-NOON	4276	0.0	2999	3235	1042	16.81+	897	63.0	10.1	36.9
NOON-1PM	4629	0.0	3000	3034	1596	17.60+	947	60.5	9.9	36.9
1-2 PM	4652	0.0	3000	2996	1656	17.73+	955	60.4	9.9	36.9
2-3 PM	4606	0.0	3000	2999	1607	17.64+	949	60.7	9.9	36.9
3-4 PM	4895	0.0	2999	3000	1895	17.74+	961	58.7	9.9	36.9
4-5 PM	4872	0.0	2999	3000	1872	17.75+	961	58.9	9.9	36.9
5-6 PM	4769	0.0	3000	3007	1762	17.76+	959	59.6	9.9	36.9
6-7 PM	4268	0.0	3000	2935	1333	17.19+	917	63.0	10.0	36.9
7-8 PM	3651	0.0	3000	2996	655	16.85+	887	67.2	10.1	36.9
8-9 PM	2836	0.0	2999	2825	11	15.92+	834	68.5	10.4	36.9
9-10 PM	2564	0.0	2999	2564	0	10.10	528	68.9	12.6	37.4
10-11 PM	1886	0.0	3000	1886	0	0.73	41	69.7	48.9	49.7
11PM-MID	1344	0.0	3000	1344	0	0.36	0	70.2	58.0	49.7

+ INDICATES QUEUEING EXCEEDS USER-SPECIFIED MAXIMUM LIMIT

----- SITE BREAKDOWN DELAYS -----	
BREAKDOWN DURATION (MINS)	0
RANGE OF QUEUE DELAY - MIN (VEH-H) MAX	0.0
AV BREAKDOWNS PER DAY	0.00
AV QUEUE DELAY/DAY (VEH-H)	0.0
AV TOTAL DELAY/DAY (VEH-H)	0.0

----- SITE ACCIDENT DELAYS -----	
BREAKDOWN DURATION (MINS)	0
RANGE OF QUEUE DELAY - MIN (VEH-H) MAX	0
AV BREAKDOWNS PER DAY	0
AV QUEUE DELAY/DAY (VEH-H)	0
AV TOTAL DELAY/DAY (VEH-H)	0

AVERAGE ACCIDENT NUMBERS (PIA/DAY)	
MAIN ROUTE WITHOUT WORKS	0.0206
MAIN ROUTE WITH WORKS	0.0129
'DIVERSION'	0.0099
<small>PIA: Personal Injury Accidents</small>	
IMPACTS ON ROAD USERS	
ROAD USER COSTS PER DAY	\$227,167
CONGESTED HOURS PER DAY*	10

*Delays Exceeding User-Specified Maximum

**IH 94: CTH Y/LAYTON AVE TO CTH ZZ/COLLEGE AVE (MILWAUKEE COUNTY)
CONTINUOUS (24 HOUR) CLOSURE
NO DIVERSION ROUTE (MAX QUEUE METHOD)**

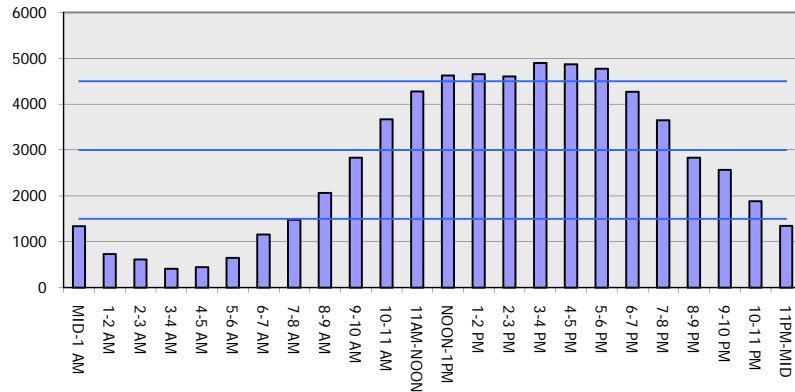
OCTOBER

Analyzed for 2009
Construction Season

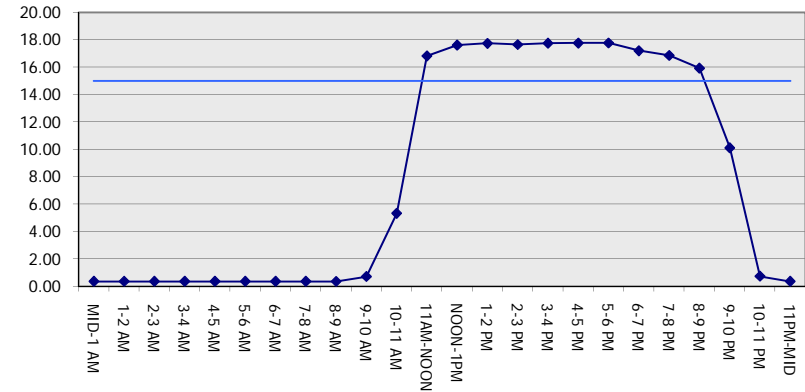
GRAPHICAL REPRESENTATION OF TRAFFIC MODEL INPUT AND OUTPUT

SUNDAY WESTBOUND DIRECTION

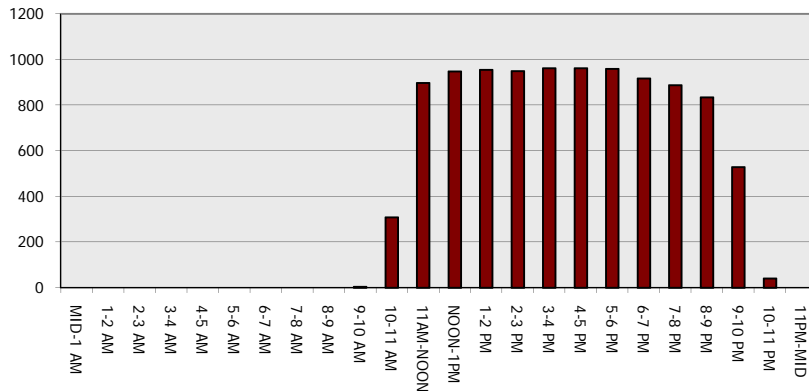
Main Route - Traffic Demand (Vehicles Per Hour)



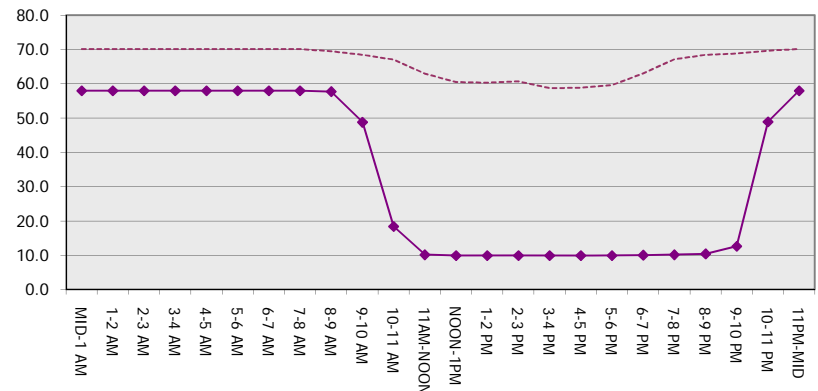
Main Route Average Delay Per Vehicle (Minutes)



Main Route - Average Queue Length (Vehicles)



Main Route - Average Speed (MPH)



IH 94: CTH Y/LAYTON AVE TO CTH ZZ/COLLEGE AVE (MILWAUKEE COUNTY) CONTINUOUS (24 HOUR) CLOSURE NO DIVERSION ROUTE (MAX QUEUE METHOD)	OCTOBER
	Analyzed for 2009 Construction Season

SUMMARY OF TRAFFIC MODEL OUTPUT

SUNDAY EASTBOUND DIRECTION

TIME OF DAY	FLOWS AND CAPACITY IN VEH/HR							AVERAGE SPEEDS IN MPH		
	MAIN ROUTE		SITE CAPA CITY	FLOW		AV.DEL PER VEH (MINS)	AVERAGE QUEUE (VEH)	MAIN ROUTE		SITE
	DEMAND FLOW	PCT HEAVY		MAIN ROUTE	'DIVER TED'			WITHOUT WORK ZONE	WITH WORK ZONE	
MID-1 AM	1333	0.0	3000	1333	0	0.36	0	70.2	58.0	49.7
1-2 AM	903	0.0	3000	903	0	0.36	0	70.2	58.0	49.7
2-3 AM	968	0.0	3000	968	0	0.36	0	70.2	58.0	49.7
3-4 AM	607	0.0	3000	607	0	0.36	0	70.2	58.0	49.7
4-5 AM	654	0.0	3000	654	0	0.36	0	70.2	58.0	49.7
5-6 AM	899	0.0	3000	899	0	0.36	0	70.2	58.0	49.7
6-7 AM	1335	0.0	3000	1335	0	0.36	0	70.2	58.0	49.7
7-8 AM	1692	0.0	3000	1692	0	0.36	0	69.9	57.9	49.7
8-9 AM	2283	0.0	2999	2283	0	0.39	0	69.2	56.4	48.0
9-10 AM	3392	0.0	2999	3392	0	2.60	137	67.8	27.6	36.9
10-11 AM	4161	0.0	3000	3522	639	14.44+	778	63.7	10.8	36.9
11AM-NOON	4548	0.0	3000	3044	1504	17.44+	936	61.1	9.9	36.9
NOON-1PM	5161	0.0	2999	3000	2161	17.62+	961	56.9	9.9	36.9
1-2 PM	5397	0.0	3000	3000	2397	17.52+	961	55.3	9.9	36.9
2-3 PM	5435	0.0	3000	3000	2435	17.50+	961	55.0	9.9	36.9
3-4 PM	5591	0.0	3000	3000	2591	17.42+	961	54.0	9.9	36.9
4-5 PM	5511	0.0	3000	3000	2511	17.46+	961	54.5	9.9	36.9
5-6 PM	4908	0.0	3000	3000	1908	17.73+	961	58.6	9.9	36.9
6-7 PM	4595	0.0	3000	2973	1623	17.65+	949	60.8	9.9	36.9
7-8 PM	3848	0.0	3000	2966	882	16.90+	893	65.9	10.1	36.9
8-9 PM	2813	0.0	2999	2782	32	15.75+	825	68.6	10.4	36.9
9-10 PM	2282	0.0	2999	2282	0	5.29	357	69.2	19.2	42.4
10-11 PM	1637	0.0	3000	1637	0	0.36	0	70.0	57.9	49.7
11PM-MID	1258	0.0	3000	1258	0	0.36	0	70.2	58.0	49.7

+ INDICATES QUEUEING EXCEEDS USER-SPECIFIED MAXIMUM LIMIT

----- SITE BREAKDOWN DELAYS -----	
BREAKDOWN DURATION (MINS)	0
RANGE OF QUEUE DELAY - MIN (VEH-H) MAX	0.0
AV BREAKDOWNS PER DAY	0.00
AV QUEUE DELAY/DAY (VEH-H)	0.0
AV TOTAL DELAY/DAY (VEH-H)	0.0

----- SITE ACCIDENT DELAYS -----	
BREAKDOWN DURATION (MINS)	0
RANGE OF QUEUE DELAY - MIN (VEH-H) MAX	0
AV BREAKDOWNS PER DAY	0
AV QUEUE DELAY/DAY (VEH-H)	0
AV TOTAL DELAY/DAY (VEH-H)	0

AVERAGE ACCIDENT NUMBERS (PIA/DAY)	
MAIN ROUTE WITHOUT WORKS	0.0227
MAIN ROUTE WITH WORKS	0.0133
'DIVERSION'	0.0138

PIA: Personal Injury Accidents

ECONOMIC IMPACT ON ROAD USERS	
ROAD USER COSTS PER DAY	\$257,913
CONGESTED HOURS PER DAY*	11

*Delays Exceeding User-Specified Maximum

IH 94: CTH Y/LAYTON AVE TO CTH ZZ/COLLEGE AVE (MILWAUKEE COUNTY)
CONTINUOUS (24 HOUR) CLOSURE
NO DIVERSION ROUTE (MAX QUEUE METHOD)

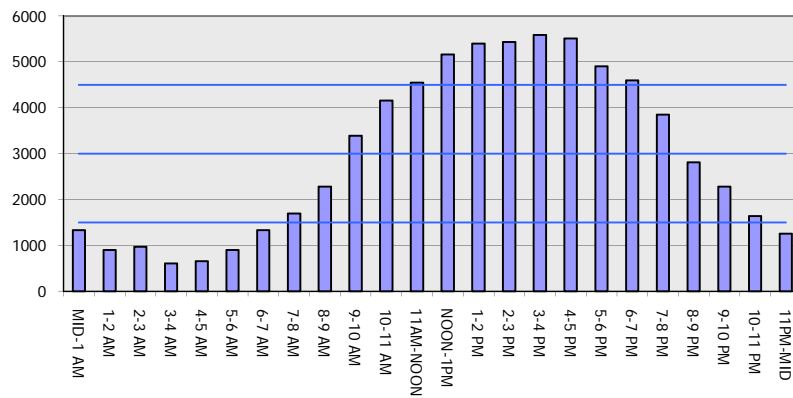
OCTOBER

Analyzed for 2009
 Construction Season

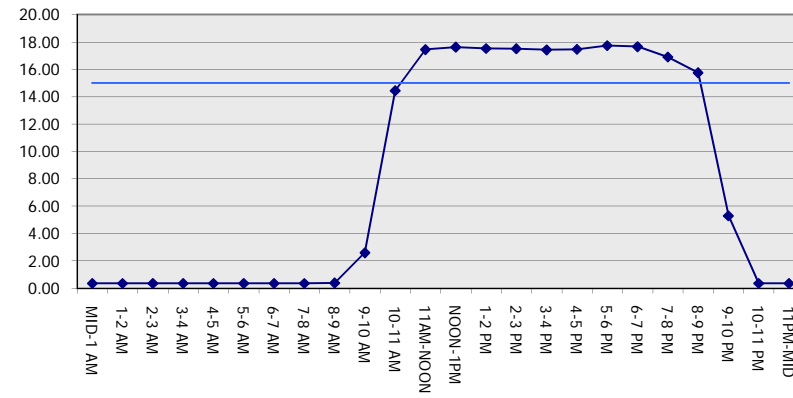
GRAPHICAL REPRESENTATION OF TRAFFIC MODEL INPUT AND OUTPUT

SUNDAY EASTBOUND DIRECTION

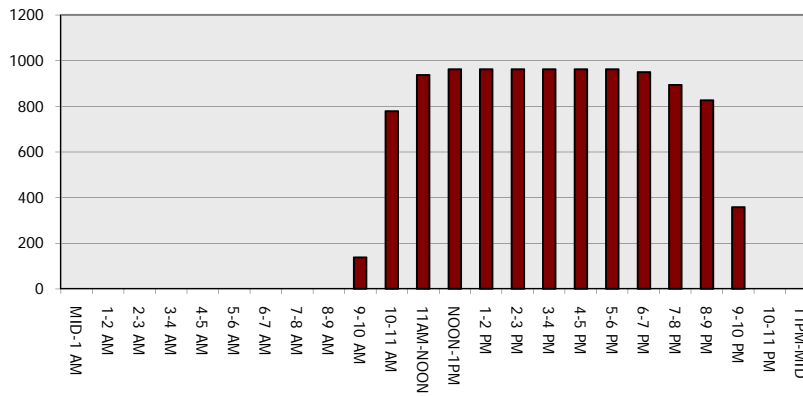
Main Route - Traffic Demand (Vehicles Per Hour)



Main Route Average Delay Per Vehicle (Minutes)



Main Route - Average Queue Length (Vehicles)



Main Route - Average Speed (MPH)

