

<b>IH 94: CTH Y/LAYTON AVE TO CTH ZZ/COLLEGE AVE (MILWAUKEE COUNTY)</b> <b>CONTINUOUS (24 HOUR) CLOSURE</b> <b>NO DIVERSION ROUTE (MAX QUEUE METHOD)</b>	<b>OCTOBER</b>
	Analyzed for 2009 Construction Season

**SUMMARY OF TRAFFIC MODEL OUTPUT**

SATURDAY WESTBOUND DIRECTION

TIME OF DAY	FLOWS AND CAPACITY IN VEH/HR						AVERAGE SPEEDS IN MPH			
	MAIN ROUTE		SITE CAPA CITY	FLOW		AV.DEL PER VEH (MINS)	AVERAGE QUEUE (VEH)	MAIN ROUTE		SITE
	DEMAND FLOW	PCT HEAVY		MAIN ROUTE	'DIVER TED'			WITHOUT WORK ZONE	WITH WORK ZONE	
MID-1 AM	1336	0.0	3000	1336	0	0.36	0	70.2	58.0	49.7
1-2 AM	752	0.0	3000	752	0	0.36	0	70.2	58.0	49.7
2-3 AM	664	0.0	3000	664	0	0.36	0	70.2	58.0	49.7
3-4 AM	607	0.0	3000	607	0	0.36	0	70.2	58.0	49.7
4-5 AM	760	0.0	3000	760	0	0.36	0	70.2	58.0	49.7
5-6 AM	1258	0.0	3000	1258	0	0.36	0	70.2	58.0	49.7
6-7 AM	1988	0.0	3000	1988	0	0.35	0	69.6	57.8	49.7
7-8 AM	2737	0.0	2999	2737	0	0.58	0	68.6	51.5	41.6
8-9 AM	3601	0.0	2999	3601	0	4.50	258	67.6	20.3	36.9
9-10 AM	4067	0.0	2999	3298	769	16.22+	863	64.4	10.2	36.9
10-11 AM	4453	0.0	2999	3043	1410	17.28+	925	61.7	10.0	36.9
11AM-NOON	4814	0.0	2999	3011	1802	17.74+	959	59.3	9.9	36.9
NOON-1PM	4993	0.0	3000	3000	1993	17.70+	961	58.1	9.9	36.9
1-2 PM	4791	0.0	3000	3001	1790	17.78+	961	59.4	9.9	36.9
2-3 PM	4874	0.0	3000	3000	1874	17.75+	961	58.9	9.9	36.9
3-4 PM	5022	0.0	3000	3000	2022	17.68+	961	57.9	9.9	36.9
4-5 PM	4968	0.0	3000	3000	1968	17.71+	961	58.2	9.9	36.9
5-6 PM	5041	0.0	3000	3000	2041	17.68+	961	57.7	9.9	36.9
6-7 PM	4512	0.0	3000	2963	1549	17.55+	942	61.4	9.9	36.9
7-8 PM	3665	0.0	3000	2986	679	16.85+	887	67.1	10.1	36.9
8-9 PM	2946	0.0	2999	2891	55	16.32+	855	68.4	10.2	36.9
9-10 PM	2810	0.0	3000	2810	0	13.68+	711	68.6	11.0	36.9
10-11 PM	2532	0.0	2999	2532	0	7.43	393	68.9	14.8	38.5
11PM-MID	2057	0.0	3000	2057	0	0.49	11	69.5	54.2	49.7

+ INDICATES QUEUEING EXCEEDS USER-SPECIFIED MAXIMUM LIMIT

*----- SITE BREAKDOWN DELAYS -----*	
BREAKDOWN DURATION (MINS)	0
RANGE OF QUEUE DELAY - MIN (VEH-H) MAX	0.0
AV BREAKDOWNS PER DAY	0.00
AV QUEUE DELAY/DAY (VEH-H)	0.0
AV TOTAL DELAY/DAY (VEH-H)	0.0

*----- SITE ACCIDENT DELAYS -----*	
BREAKDOWN DURATION (MINS)	0
RANGE OF QUEUE DELAY - MIN (VEH-H) MAX	0
AV BREAKDOWNS PER DAY	0
AV QUEUE DELAY/DAY (VEH-H)	0
AV TOTAL DELAY/DAY (VEH-H)	0

AVERAGE ACCIDENT NUMBERS (PIA/DAY)	
MAIN ROUTE WITHOUT WORKS	0.0240
MAIN ROUTE WITH WORKS	0.0145
'DIVERSION'	0.0132
PIA: Personal Injury Accidents	
IMPACTS ON ROAD USERS	
ROAD USER COSTS PER DAY	\$284,414
CONGESTED HOURS PER DAY*	13

\*Delays Exceeding User-Specified Maximum

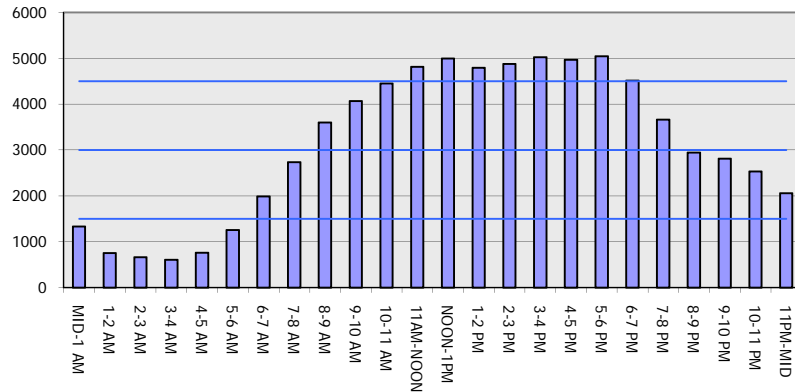
**IH 94: CTH Y/LAYTON AVE TO CTH ZZ/COLLEGE AVE (MILWAUKEE COUNTY)  
CONTINUOUS (24 HOUR) CLOSURE  
NO DIVERSION ROUTE (MAX QUEUE METHOD)**

**OCTOBER**

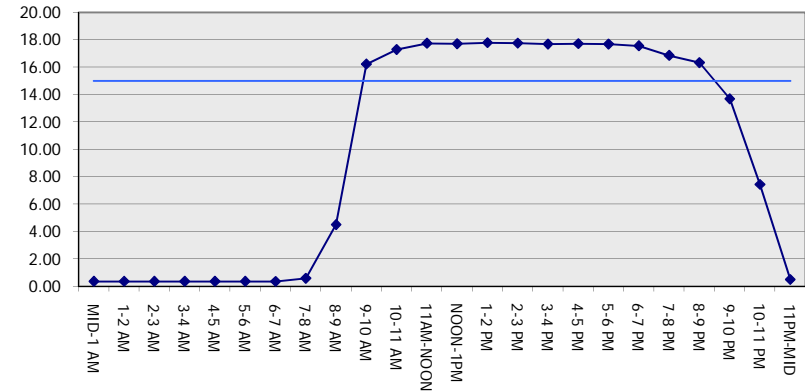
Analyzed for 2009  
Construction Season

**GRAPHICAL REPRESENTATION OF TRAFFIC MODEL INPUT AND OUTPUT**  
**SATURDAY WESTBOUND DIRECTION**

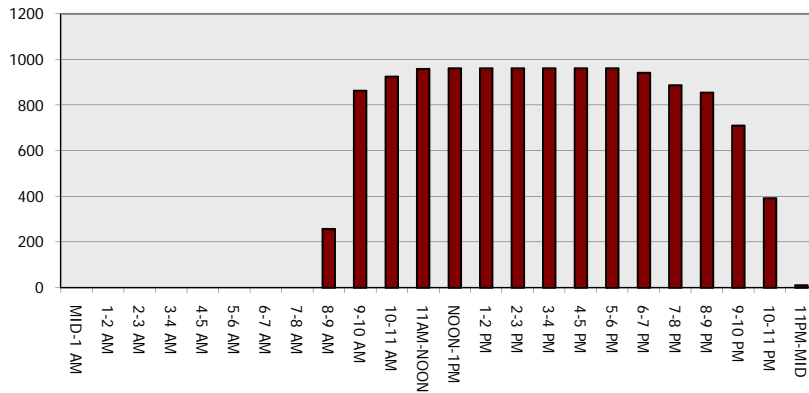
**Main Route - Traffic Demand (Vehicles Per Hour)**



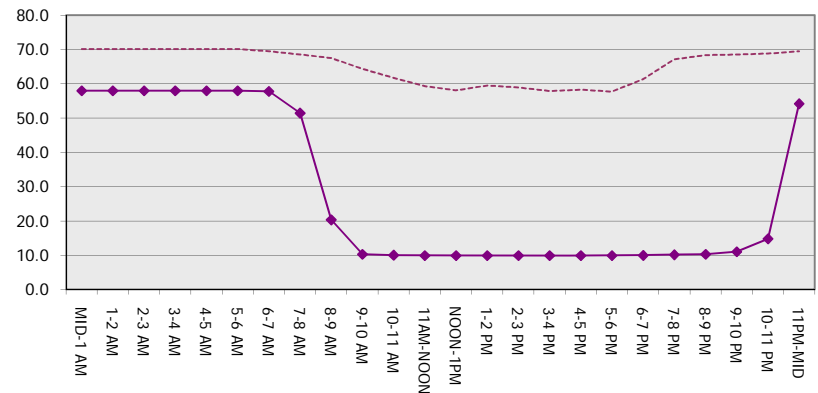
**Main Route Average Delay Per Vehicle (Minutes)**



**Main Route - Average Queue Length (Vehicles)**



**Main Route - Average Speed (MPH)**



<b>IH 94: CTH Y/LAYTON AVE TO CTH ZZ/COLLEGE AVE (MILWAUKEE COUNTY)</b> <b>CONTINUOUS (24 HOUR) CLOSURE</b> <b>NO DIVERSION ROUTE (MAX QUEUE METHOD)</b>	<b>OCTOBER</b>
	Analyzed for 2009 Construction Season

**SUMMARY OF TRAFFIC MODEL OUTPUT**

SATURDAY EASTBOUND DIRECTION

TIME OF DAY	FLOWS AND CAPACITY IN VEH/HR							AVERAGE SPEEDS IN MPH		
	MAIN ROUTE		SITE CAPA CITY	FLOW		AV.DEL PER VEH (MINS)	AVERAGE QUEUE (VEH)	MAIN ROUTE		SITE
	DEMAND FLOW	PCT HEAVY		MAIN ROUTE	'DIVER TED'			WITHOUT WORK ZONE	WITH WORK ZONE	
MID-1 AM	1277	0.0	3000	1277	0	0.36	0	70.2	58.0	49.7
1-2 AM	848	0.0	3000	848	0	0.36	0	70.2	58.0	49.7
2-3 AM	805	0.0	3000	805	0	0.36	0	70.2	58.0	49.7
3-4 AM	743	0.0	3000	743	0	0.36	0	70.2	58.0	49.7
4-5 AM	935	0.0	3000	935	0	0.36	0	70.2	58.0	49.7
5-6 AM	1589	0.0	3000	1589	0	0.36	0	70.0	57.9	49.7
6-7 AM	2169	0.0	3000	2169	0	0.35	0	69.4	57.7	49.7
7-8 AM	2511	0.0	2999	2511	0	0.44	0	68.9	55.1	46.2
8-9 AM	3306	0.0	2999	3306	0	2.15	101	67.9	30.6	36.9
9-10 AM	4155	0.0	3000	3607	547	13.47+	735	63.8	11.2	36.9
10-11 AM	4514	0.0	3000	3037	1477	17.39+	933	61.3	9.9	36.9
11AM-NOON	5010	0.0	2999	3000	2010	17.69+	961	57.9	9.9	36.9
NOON-1PM	5221	0.0	3000	3000	2221	17.60+	961	56.5	9.9	36.9
1-2 PM	4686	0.0	3000	3005	1681	17.76+	957	60.2	9.9	36.9
2-3 PM	5061	0.0	2999	3000	2061	17.67+	961	57.6	9.9	36.9
3-4 PM	5087	0.0	3000	3000	2087	17.66+	961	57.4	9.9	36.9
4-5 PM	4750	0.0	3000	3002	1748	17.77+	959	59.7	9.9	36.9
5-6 PM	4526	0.0	3000	2968	1558	17.56+	943	61.2	9.9	36.9
6-7 PM	3902	0.0	3000	2971	932	16.88+	893	65.5	10.1	36.9
7-8 PM	3241	0.0	3000	2994	247	16.82+	883	68.0	10.1	36.9
8-9 PM	2736	0.0	2999	2736	0	14.89+	779	68.6	10.6	36.9
9-10 PM	2596	0.0	2999	2596	0	8.38	433	68.8	13.8	37.2
10-11 PM	2474	0.0	3000	2474	0	1.09	57	69.0	42.4	45.0
11PM-MID	1860	0.0	3000	1860	0	0.35	0	69.7	57.8	49.7

+ INDICATES QUEUEING EXCEEDS USER-SPECIFIED MAXIMUM LIMIT

*----- SITE BREAKDOWN DELAYS -----*	
BREAKDOWN DURATION (MINS)	0
RANGE OF QUEUE DELAY - MIN (VEH-H) MAX	0.0
AV BREAKDOWNS PER DAY	0.00
AV QUEUE DELAY/DAY (VEH-H)	0.0
AV TOTAL DELAY/DAY (VEH-H)	0.0

*----- SITE ACCIDENT DELAYS -----*	
BREAKDOWN DURATION (MINS)	0
RANGE OF QUEUE DELAY - MIN (VEH-H) MAX	0
AV BREAKDOWNS PER DAY	0
AV QUEUE DELAY/DAY (VEH-H)	0
AV TOTAL DELAY/DAY (VEH-H)	0

AVERAGE ACCIDENT NUMBERS (PIA/DAY)	
MAIN ROUTE WITHOUT WORKS	0.0236
MAIN ROUTE WITH WORKS	0.0145
'DIVERSION'	0.0122

PIA: Personal Injury Accidents

ECONOMIC IMPACT ON ROAD USERS	
ROAD USER COSTS PER DAY	\$261,256
CONGESTED HOURS PER DAY*	12

\*Delays Exceeding User-Specified Maximum

**IH 94: CTH Y/LAYTON AVE TO CTH ZZ/COLLEGE AVE (MILWAUKEE COUNTY)**  
**CONTINUOUS (24 HOUR) CLOSURE**  
**NO DIVERSION ROUTE (MAX QUEUE METHOD)**

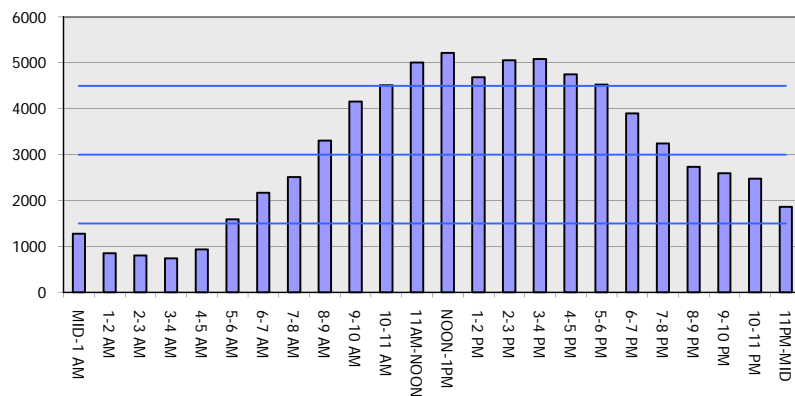
**OCTOBER**

Analyzed for 2009  
 Construction Season

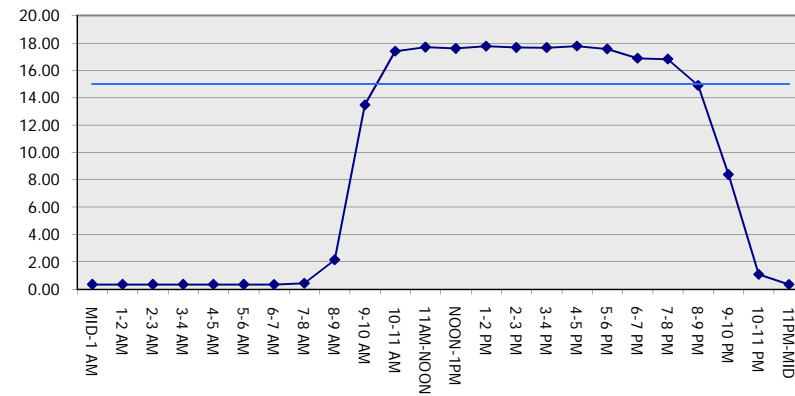
**GRAPHICAL REPRESENTATION OF TRAFFIC MODEL INPUT AND OUTPUT**

**SATURDAY EASTBOUND DIRECTION**

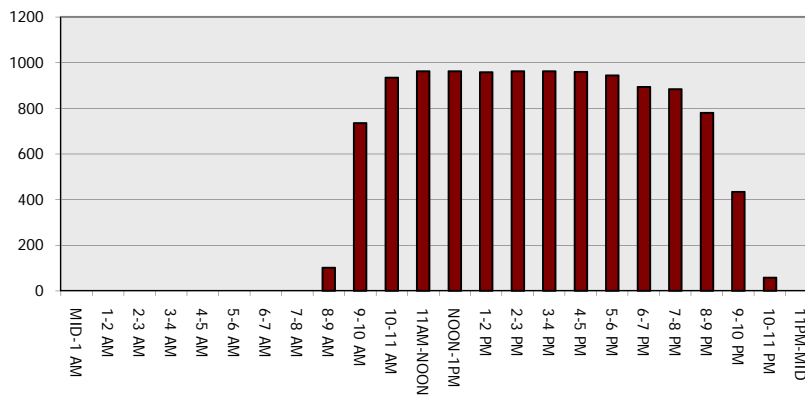
**Main Route - Traffic Demand (Vehicles Per Hour)**



**Main Route Average Delay Per Vehicle (Minutes)**



**Main Route - Average Queue Length (Vehicles)**



**Main Route - Average Speed (MPH)**

