

<b>IH 94: CTH Y/LAYTON AVE TO CTH ZZ/COLLEGE AVE (MILWAUKEE COUNTY)</b> <b>CONTINUOUS (24 HOUR) CLOSURE</b> <b>NO DIVERSION ROUTE (MAX QUEUE METHOD)</b>	<b>OCTOBER</b>
	Analyzed for 2009 Construction Season

**SUMMARY OF TRAFFIC MODEL OUTPUT**

MON-THUR                      WESTBOUND DIRECTION

TIME OF DAY	FLOWS AND CAPACITY IN VEH/HR						AVERAGE SPEEDS IN MPH			
	MAIN ROUTE		SITE CAPA CITY	FLOW		AV.DEL PER VEH (MINS)	AVERAGE QUEUE (VEH)	MAIN ROUTE		SITE
	DEMAND FLOW	PCT HEAVY		MAIN ROUTE	'DIVER TED'			WITHOUT WORK ZONE	WITH WORK ZONE	
MID-1 AM	915	0.0	3000	915	0	0.36	0	70.2	58.0	49.7
1-2 AM	550	0.0	3000	550	0	0.36	0	70.2	58.0	49.7
2-3 AM	531	0.0	3000	531	0	0.36	0	70.2	58.0	49.7
3-4 AM	611	0.0	3000	611	0	0.36	0	70.2	58.0	49.7
4-5 AM	1026	0.0	3000	1026	0	0.36	0	70.2	58.0	49.7
5-6 AM	2788	0.0	2999	2788	0	1.00	42	68.6	43.6	43.3
6-7 AM	5457	0.0	3000	3854	1603	14.30+	812	54.9	10.7	36.9
7-8 AM	6096	0.0	2999	3000	3096	17.16+	961	50.5	9.9	36.9
8-9 AM	5064	0.0	2999	2940	2123	17.58+	956	57.6	9.9	36.9
9-10 AM	4214	0.0	2999	2932	1283	17.13+	913	63.3	10.1	36.9
10-11 AM	4073	0.0	2999	2997	1077	16.80+	892	64.3	10.1	36.9
11AM-NOON	4101	0.0	3000	3001	1100	16.81+	892	64.1	10.1	36.9
NOON-1PM	4244	0.0	3000	3017	1227	16.98+	905	63.2	10.1	36.9
1-2 PM	4402	0.0	3000	3023	1378	17.23+	922	62.1	10.0	36.9
2-3 PM	4910	0.0	2999	3014	1896	17.69+	959	58.6	9.9	36.9
3-4 PM	5499	0.0	3000	3000	2499	17.47+	961	54.6	9.9	36.9
4-5 PM	5212	0.0	3000	3000	2212	17.60+	961	56.6	9.9	36.9
5-6 PM	5026	0.0	3000	3000	2026	17.68+	961	57.8	9.9	36.9
6-7 PM	4244	0.0	3000	2958	1287	17.20+	917	63.2	10.0	36.9
7-8 PM	3112	0.0	3000	2936	176	16.71+	877	68.2	10.2	36.9
8-9 PM	2552	0.0	2999	2552	0	12.17+	637	68.9	11.6	36.9
9-10 PM	2507	0.0	3000	2507	0	2.59	174	68.9	28.2	41.7
10-11 PM	1971	0.0	3000	1971	0	0.35	0	69.6	57.8	49.7
11PM-MID	1391	0.0	3000	1391	0	0.36	0	70.2	58.0	49.7

+ INDICATES QUEUEING EXCEEDS USER-SPECIFIED MAXIMUM LIMIT

*----- SITE BREAKDOWN DELAYS -----*	
BREAKDOWN DURATION (MINS)	0
RANGE OF QUEUE DELAY - MIN (VEH-H) MAX	0.0
AV BREAKDOWNS PER DAY	0.00
AV QUEUE DELAY/DAY (VEH-H)	0.0
AV TOTAL DELAY/DAY (VEH-H)	0.0

*----- SITE ACCIDENT DELAYS -----*	
BREAKDOWN DURATION (MINS)	0
RANGE OF QUEUE DELAY - MIN (VEH-H) MAX	0
AV BREAKDOWNS PER DAY	0
AV QUEUE DELAY/DAY (VEH-H)	0
AV TOTAL DELAY/DAY (VEH-H)	0

AVERAGE ACCIDENT NUMBERS (PIA/DAY)	
MAIN ROUTE WITHOUT WORKS	0.0256
MAIN ROUTE WITH WORKS	0.0145
'DIVERSION'	0.0169
<small>PIA: Personal Injury Accidents</small>	
IMPACTS ON ROAD USERS	
ROAD USER COSTS PER DAY	\$254,147
CONGESTED HOURS PER DAY*	15

\*Delays Exceeding User-Specified Maximum

**IH 94: CTH Y/LAYTON AVE TO CTH ZZ/COLLEGE AVE (MILWAUKEE COUNTY)  
CONTINUOUS (24 HOUR) CLOSURE  
NO DIVERSION ROUTE (MAX QUEUE METHOD)**

**OCTOBER**

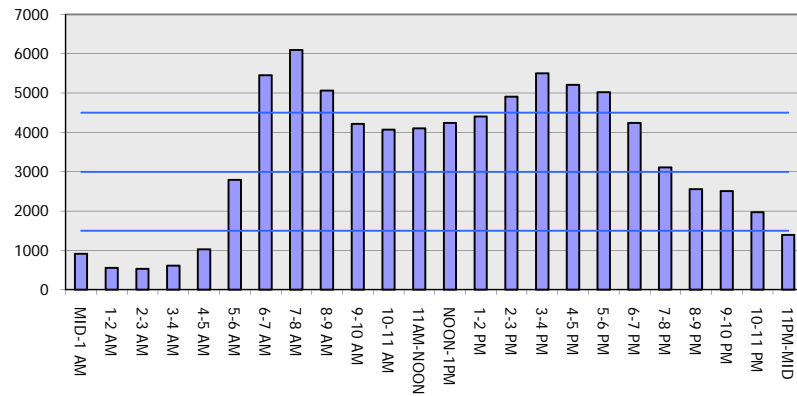
Analyzed for 2009  
Construction Season

**GRAPHICAL REPRESENTATION OF TRAFFIC MODEL INPUT AND OUTPUT**

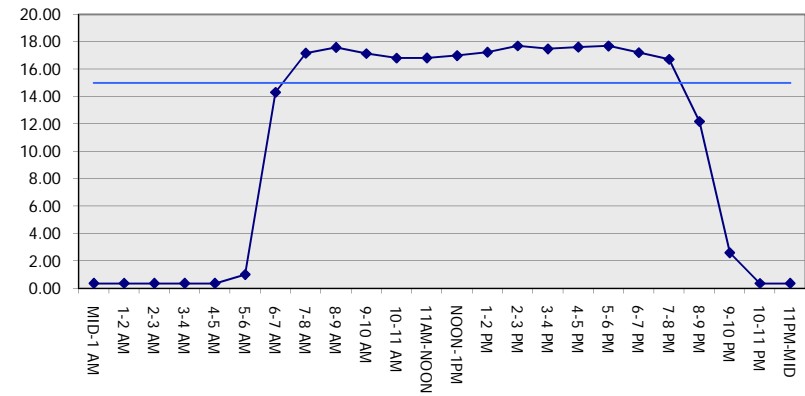
**MON-THUR**

**WESTBOUND DIRECTION**

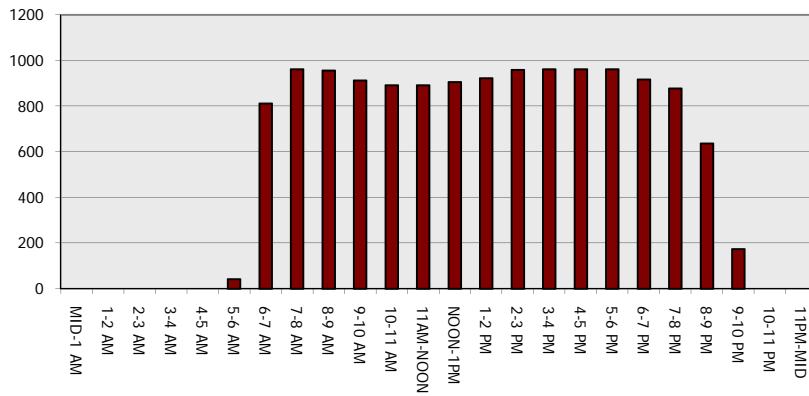
**Main Route - Traffic Demand (Vehicles Per Hour)**



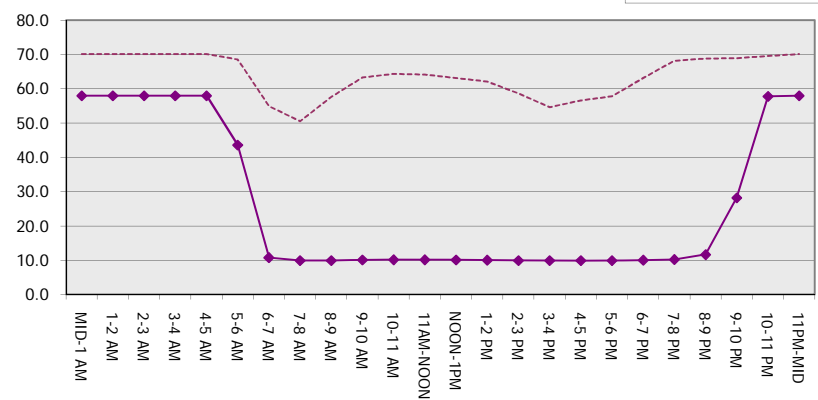
**Main Route Average Delay Per Vehicle (Minutes)**



**Main Route - Average Queue Length (Vehicles)**



**Main Route - Average Speed (MPH)**



<b>IH 94: CTH Y/LAYTON AVE TO CTH ZZ/COLLEGE AVE (MILWAUKEE COUNTY)</b> <b>CONTINUOUS (24 HOUR) CLOSURE</b> <b>NO DIVERSION ROUTE (MAX QUEUE METHOD)</b>	<b>OCTOBER</b>
	Analyzed for 2009 Construction Season

**SUMMARY OF TRAFFIC MODEL OUTPUT**

MON-THUR                      EASTBOUND DIRECTION

TIME OF DAY	FLOWS AND CAPACITY IN VEH/HR							AVERAGE SPEEDS IN MPH			
	MAIN ROUTE		SITE CAPA CITY	FLOW		AV.DEL PER VEH (MINS)	AVERAGE QUEUE (VEH)	MAIN ROUTE		SITE	
	DEMAND FLOW	PCT HEAVY		MAIN ROUTE	'DIVER TED'			WITHOUT WORK ZONE	WITH WORK ZONE		
MID-1 AM	820	0.0	3000	820	0	0.36	0	70.2	58.0	49.7	
1-2 AM	599	0.0	3000	599	0	0.36	0	70.2	58.0	49.7	
2-3 AM	587	0.0	3000	587	0	0.36	0	70.2	58.0	49.7	
3-4 AM	755	0.0	3000	755	0	0.36	0	70.2	58.0	49.7	
4-5 AM	1406	0.0	3000	1406	0	0.36	0	70.2	58.0	49.7	
5-6 AM	3065	0.0	2999	3065	0	1.33	67	68.2	38.9	40.6	
6-7 AM	5212	0.0	3000	3563	1648	15.16+	849	56.6	10.6	38.2	
7-8 AM	4721	0.0	2999	3119	1602	17.44+	940	59.9	9.9	36.9	
8-9 AM	4529	0.0	3000	2976	1553	17.55+	942	61.2	9.9	36.9	
9-10 AM	4032	0.0	3000	2966	1067	16.89+	896	64.6	10.1	36.9	
10-11 AM	3862	0.0	3000	2998	865	16.83+	889	65.8	10.1	36.9	
11AM-NOON	4142	0.0	2999	3012	1130	16.86+	896	63.8	10.1	36.9	
NOON-1PM	4470	0.0	3000	3038	1432	17.31+	928	61.6	10.0	36.9	
1-2 PM	4769	0.0	3000	3010	1759	17.69+	955	59.6	9.9	36.9	
2-3 PM	5563	0.0	3000	3000	2563	17.44+	961	54.2	9.9	36.9	
3-4 PM	6140	0.0	3000	3000	3140	17.13+	961	50.2	9.9	36.9	
4-5 PM	6543	0.0	3000	3000	3543	16.89+	961	47.4	9.9	36.9	
5-6 PM	6596	0.0	3000	3000	3596	16.86+	961	47.1	9.9	36.9	
6-7 PM	5145	0.0	3000	3000	2145	17.63+	961	57.0	9.9	36.9	
7-8 PM	3667	0.0	3000	2954	712	16.93+	892	67.1	10.1	36.9	
8-9 PM	2971	0.0	2999	2896	75	16.39+	859	68.4	10.2	36.9	
9-10 PM	2693	0.0	2999	2693	0	13.02+	678	68.7	11.2	36.9	
10-11 PM	2046	0.0	2999	2046	0	1.67	153	69.5	35.9	46.7	
11PM-MID	1400	0.0	3000	1400	0	0.36	0	70.2	58.0	49.7	

+ INDICATES QUEUEING EXCEEDS USER-SPECIFIED MAXIMUM LIMIT

BREAKDOWN DURATION (MINS)	0
RANGE OF QUEUE DELAY - MIN (VEH-H) MAX	0.0
AV BREAKDOWNS PER DAY	0.00
AV QUEUE DELAY/DAY (VEH-H)	0.0
AV TOTAL DELAY/DAY (VEH-H)	0.0

BREAKDOWN DURATION (MINS)	0
RANGE OF QUEUE DELAY - MIN (VEH-H) MAX	0
AV BREAKDOWNS PER DAY	0
AV QUEUE DELAY/DAY (VEH-H)	0
AV TOTAL DELAY/DAY (VEH-H)	0

MAIN ROUTE WITHOUT WORKS	0.0273
MAIN ROUTE WITH WORKS	0.0149
'DIVERSION'	0.0198

PIA: Personal Injury Accidents

ROAD USER COSTS PER DAY	\$279,329
CONGESTED HOURS PER DAY*	16

\*Delays Exceeding User-Specified Maximum

**IH 94: CTH Y/LAYTON AVE TO CTH ZZ/COLLEGE AVE (MILWAUKEE COUNTY)**  
**CONTINUOUS (24 HOUR) CLOSURE**  
**NO DIVERSION ROUTE (MAX QUEUE METHOD)**

**OCTOBER**

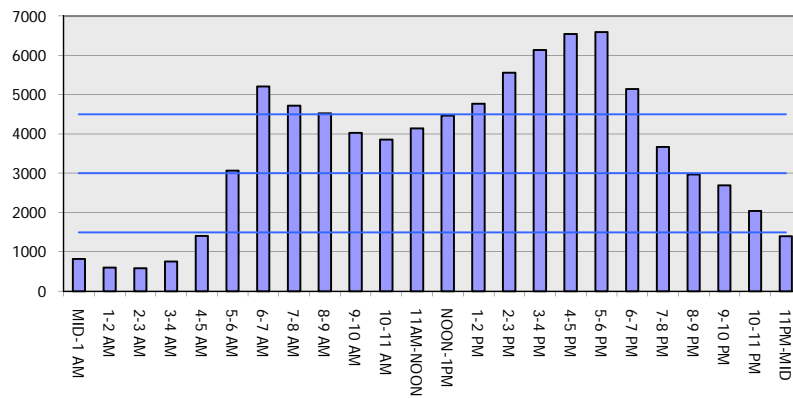
Analyzed for 2009  
 Construction Season

**GRAPHICAL REPRESENTATION OF TRAFFIC MODEL INPUT AND OUTPUT**

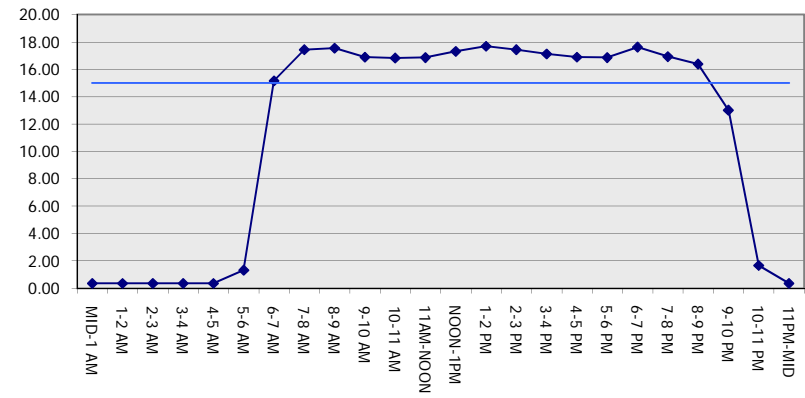
**MON-THUR**

**EASTBOUND DIRECTION**

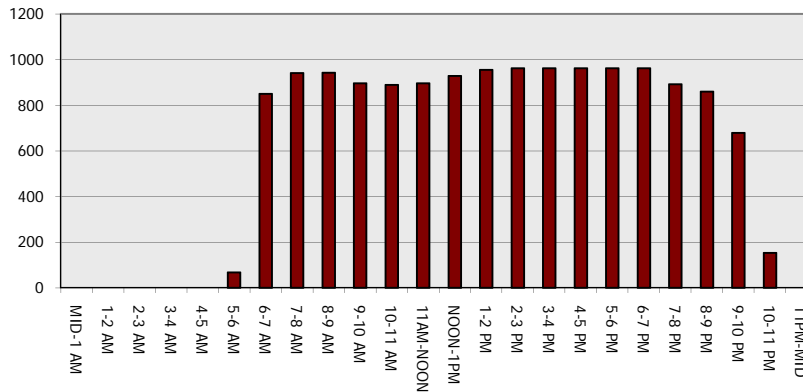
**Main Route - Traffic Demand (Vehicles Per Hour)**



**Main Route Average Delay Per Vehicle (Minutes)**



**Main Route - Average Queue Length (Vehicles)**



**Main Route - Average Speed (MPH)**

