

<b>IH 94: CTH Y/LAYTON AVE TO CTH ZZ/COLLEGE AVE (MILWAUKEE COUNTY)</b> <b>CONTINUOUS (24 HOUR) 2 LANE CLOSURE</b> <b>NO DIVERSION ROUTE (MAX QUEUE METHOD)</b>	<b>OCTOBER</b>
	Analyzed for 2009 Construction Season

**SUMMARY OF TRAFFIC MODEL OUTPUT**

FRIDAY WESTBOUND DIRECTION

TIME OF DAY	FLOWS AND CAPACITY IN VEH/HR							AVERAGE SPEEDS IN MPH			
	MAIN ROUTE		SITE CAPA CITY	FLOW		AV.DEL PER VEH (MINS)	AVERAGE QUEUE (VEH)	MAIN ROUTE		SITE	
	DEMAND FLOW	PCT HEAVY		MAIN ROUTE	'DIVER TED'			WITHOUT WORK ZONE	WITH WORK ZONE		
MID-1 AM	1105	0.0	1499	1105	0	8.48	250	70.2	12.4	37.6	
1-2 AM	708	0.0	1500	708	0	0.46	0	70.2	55.3	46.0	
2-3 AM	663	0.0	1500	663	0	0.45	0	70.2	55.5	46.2	
3-4 AM	758	0.0	1500	758	0	0.46	0	70.2	55.2	45.8	
4-5 AM	1042	0.0	1499	1042	0	0.60	0	70.2	51.9	41.7	
5-6 AM	2850	0.0	1499	1897	954	11.84+	309	68.5	9.6	32.5	
6-7 AM	5495	0.0	1500	1500	3995	16.51+	420	54.6	7.5	32.5	
7-8 AM	6130	0.0	1500	1500	4630	16.28+	420	50.3	7.5	32.5	
8-9 AM	5164	0.0	1500	1500	3664	16.61+	420	56.9	7.5	32.5	
9-10 AM	4513	0.0	1500	1500	3013	16.80+	420	61.4	7.5	32.5	
10-11 AM	4746	0.0	1500	1500	3246	16.73+	420	59.7	7.5	32.5	
11AM-NOON	4993	0.0	1500	1500	3493	16.67+	420	58.1	7.5	32.5	
NOON-1PM	5232	0.0	1500	1500	3732	16.59+	420	56.4	7.5	32.5	
1-2 PM	5267	0.0	1500	1500	3767	16.58+	420	56.2	7.5	32.5	
2-3 PM	6037	0.0	1500	1500	4537	16.32+	420	50.9	7.5	32.5	
3-4 PM	6316	0.0	1500	1500	4816	16.21+	420	49.0	7.5	32.5	
4-5 PM	5962	0.0	1500	1500	4462	16.35+	420	51.4	7.5	32.5	
5-6 PM	6013	0.0	1500	1500	4513	16.33+	420	51.1	7.5	32.5	
6-7 PM	5406	0.0	1500	1500	3906	16.54+	420	55.2	7.5	32.5	
7-8 PM	4551	0.0	1500	1500	3051	16.79+	420	61.0	7.5	32.5	
8-9 PM	3632	0.0	1500	1500	2132	17.01+	420	67.4	7.5	32.5	
9-10 PM	3430	0.0	1500	1502	1928	17.01+	420	67.8	7.5	32.5	
10-11 PM	2726	0.0	1500	1506	1220	16.80+	414	68.6	7.5	32.5	
11PM-MID	2077	0.0	1500	1500	577	16.73+	411	69.4	7.6	32.5	

+ INDICATES QUEUEING EXCEEDS USER-SPECIFIED MAXIMUM LIMIT

*----- SITE BREAKDOWN DELAYS -----*	
BREAKDOWN DURATION (MINS)	0
RANGE OF QUEUE DELAY - MIN (VEH-H) MAX	0.0
AV BREAKDOWNS PER DAY	0.00
AV QUEUE DELAY/DAY (VEH-H)	0.0
AV TOTAL DELAY/DAY (VEH-H)	0.0

*----- SITE ACCIDENT DELAYS -----*	
BREAKDOWN DURATION (MINS)	0
RANGE OF QUEUE DELAY - MIN (VEH-H) MAX	0
AV BREAKDOWNS PER DAY	0
AV QUEUE DELAY/DAY (VEH-H)	0
AV TOTAL DELAY/DAY (VEH-H)	0

AVERAGE ACCIDENT NUMBERS (PIA/DAY)	
MAIN ROUTE WITHOUT WORKS	0.0302
MAIN ROUTE WITH WORKS	0.0084
'DIVERSION'	0.0455
PIA: Personal Injury Accidents	
IMPACTS ON ROAD USERS	
ROAD USER COSTS PER DAY	\$334,256
CONGESTED HOURS PER DAY*	19

\*Delays Exceeding User-Specified Maximum

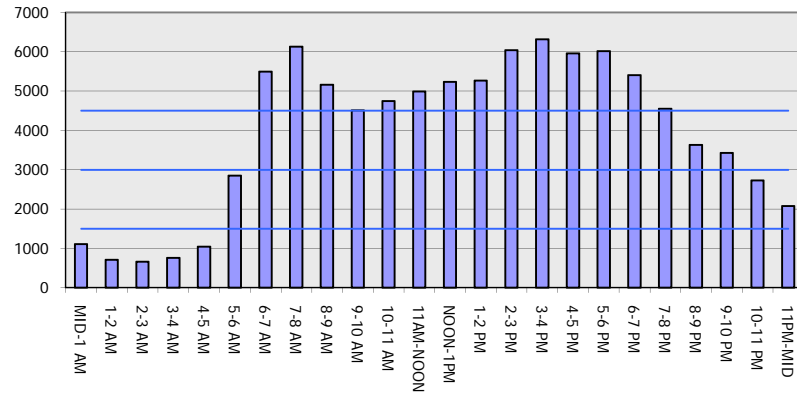
**IH 94: CTH Y/LAYTON AVE TO CTH ZZ/COLLEGE AVE (MILWAUKEE COUNTY)**  
**CONTINUOUS (24 HOUR) 2 LANE CLOSURE**  
**NO DIVERSION ROUTE (MAX QUEUE METHOD)**

**OCTOBER**

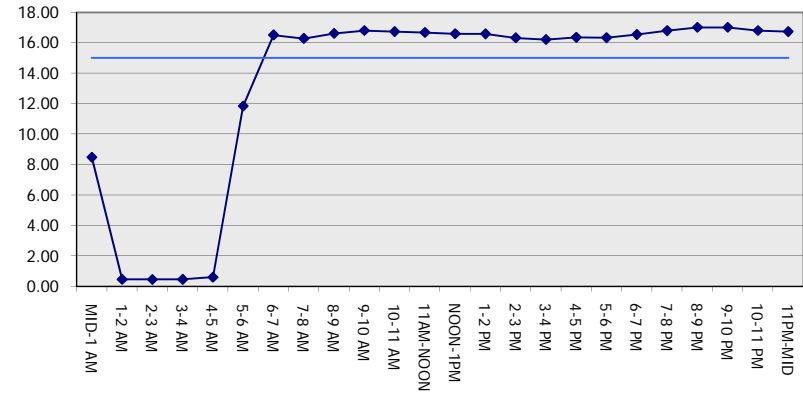
Analyzed for 2009  
 Construction Season

**GRAPHICAL REPRESENTATION OF TRAFFIC MODEL INPUT AND OUTPUT**  
**FRIDAY WESTBOUND DIRECTION**

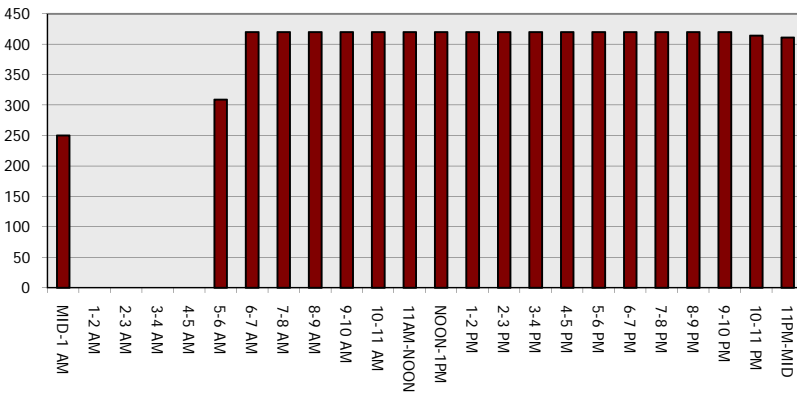
**Main Route - Traffic Demand (Vehicles Per Hour)**



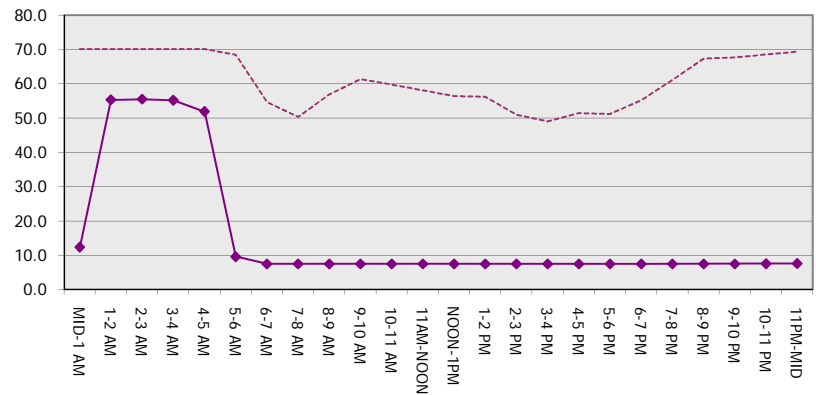
**Main Route Average Delay Per Vehicle (Minutes)**



**Main Route - Average Queue Length (Vehicles)**



**Main Route - Average Speed (MPH)**



<b>IH 94: CTH Y/LAYTON AVE TO CTH ZZ/COLLEGE AVE (MILWAUKEE COUNTY)</b> <b>CONTINUOUS (24 HOUR) 2 LANE CLOSURE</b> <b>NO DIVERSION ROUTE (MAX QUEUE METHOD)</b>	<b>OCTOBER</b>
	Analyzed for 2009 Construction Season

**SUMMARY OF TRAFFIC MODEL OUTPUT**

FRIDAY EASTBOUND DIRECTION

TIME OF DAY	FLOWS AND CAPACITY IN VEH/HR						AVERAGE SPEEDS IN MPH			
	MAIN ROUTE		SITE CAPA CITY	FLOW		AV.DEL PER VEH (MINS)	AVERAGE QUEUE (VEH)	MAIN ROUTE		SITE
	DEMAND FLOW	PCT HEAVY		MAIN ROUTE	'DIVER TED'			WITHOUT WORK ZONE	WITH WORK ZONE	
MID-1 AM	964	0.0	1499	964	0	4.10	190	70.2	21.2	39.2
1-2 AM	708	0.0	1500	708	0	0.46	0	70.2	55.4	46.0
2-3 AM	687	0.0	1500	687	0	0.45	0	70.2	55.5	46.1
3-4 AM	901	0.0	1499	901	0	0.48	0	70.2	54.8	45.2
4-5 AM	1481	0.0	1499	1481	0	1.50	29	70.2	37.4	36.3
5-6 AM	2968	0.0	1500	1766	1202	14.97+	385	68.4	8.2	36.8
6-7 AM	5007	0.0	1499	1500	3507	16.66+	420	57.9	7.5	32.5
7-8 AM	4952	0.0	1499	1500	3452	16.68+	420	58.3	7.5	32.5
8-9 AM	4378	0.0	1499	1500	2878	16.83+	420	62.2	7.5	32.5
9-10 AM	4159	0.0	1500	1500	2659	16.89+	420	63.8	7.5	32.5
10-11 AM	4258	0.0	1499	1500	2758	16.86+	420	63.1	7.5	32.5
11AM-NOON	4590	0.0	1499	1500	3090	16.78+	420	60.8	7.5	32.5
NOON-1PM	5007	0.0	1500	1500	3507	16.66+	420	57.9	7.5	32.5
1-2 PM	5351	0.0	1500	1500	3851	16.56+	420	55.6	7.5	32.5
2-3 PM	6128	0.0	1499	1500	4628	16.29+	420	50.3	7.5	32.5
3-4 PM	6497	0.0	1500	1500	4997	16.14+	420	47.8	7.5	32.5
4-5 PM	6978	0.0	1499	1500	5478	15.91+	420	44.5	7.5	32.5
5-6 PM	6824	0.0	1500	1500	5324	15.99+	420	45.5	7.5	32.5
6-7 PM	5376	0.0	1499	1500	3876	16.55+	420	55.5	7.5	32.5
7-8 PM	4040	0.0	1499	1500	2540	16.91+	420	64.6	7.5	32.5
8-9 PM	3146	0.0	1500	1515	1631	16.94+	418	68.1	7.5	32.5
9-10 PM	3053	0.0	1500	1510	1543	16.93+	417	68.2	7.5	32.5
10-11 PM	2530	0.0	1500	1501	1029	16.75+	412	68.9	7.6	32.5
11PM-MID	1854	0.0	1500	1500	354	16.73+	411	69.7	7.6	32.5

+ INDICATES QUEUEING EXCEEDS USER-SPECIFIED MAXIMUM LIMIT

*----- SITE BREAKDOWN DELAYS -----*	
BREAKDOWN DURATION (MINS)	0
RANGE OF QUEUE DELAY - MIN (VEH-H) MAX	0.0
AV BREAKDOWNS PER DAY	0.00
AV QUEUE DELAY/DAY (VEH-H)	0.0
AV TOTAL DELAY/DAY (VEH-H)	0.0

*----- SITE ACCIDENT DELAYS -----*	
BREAKDOWN DURATION (MINS)	0
RANGE OF QUEUE DELAY - MIN (VEH-H) MAX	0
AV BREAKDOWNS PER DAY	0
AV QUEUE DELAY/DAY (VEH-H)	0
AV TOTAL DELAY/DAY (VEH-H)	0

AVERAGE ACCIDENT NUMBERS (PIA/DAY)	
MAIN ROUTE WITHOUT WORKS	0.0292
MAIN ROUTE WITH WORKS	0.0085
'DIVERSION'	0.0430

PIA: Personal Injury Accidents

ECONOMIC IMPACT ON ROAD USERS	
ROAD USER COSTS PER DAY	\$322,259
CONGESTED HOURS PER DAY*	19

\*Delays Exceeding User-Specified Maximum

**IH 94: CTH Y/LAYTON AVE TO CTH ZZ/COLLEGE AVE (MILWAUKEE COUNTY)**  
**CONTINUOUS (24 HOUR) 2 LANE CLOSURE**  
**NO DIVERSION ROUTE (MAX QUEUE METHOD)**

**OCTOBER**

Analyzed for 2009  
 Construction Season

**GRAPHICAL REPRESENTATION OF TRAFFIC MODEL INPUT AND OUTPUT**  
**FRIDAY EASTBOUND DIRECTION**

