

<b>IH 43/94: BECHER ST TO MITCHELL INTERCHANGE (MILWAUKEE COUNTY)</b> <b>CONTINUOUS (24 HOUR) 2 LANE CLOSURE</b> <b>NO DIVERSION ROUTE (MAX QUEUE METHOD)</b>	<b>OCTOBER</b>
	Analyzed for 2009 Construction Season

**SUMMARY OF TRAFFIC MODEL OUTPUT**

SUNDAY WESTBOUND DIRECTION

TIME OF DAY	FLOWS AND CAPACITY IN VEH/HR						AVERAGE SPEEDS IN MPH			
	MAIN ROUTE		SITE CAPA CITY	FLOW		AV.DEL PER VEH (MINS)	AVERAGE QUEUE (VEH)	MAIN ROUTE		SITE
	DEMAND FLOW	PCT HEAVY		MAIN ROUTE	'DIVER TED'			WITHOUT WORK ZONE	WITH WORK ZONE	
MID-1 AM	1105	0.0	1500	1105	0	0.60	0	69.4	57.9	41.3
1-2 AM	838	0.0	1500	838	0	0.57	0	69.7	58.6	42.2
2-3 AM	897	0.0	1500	897	0	0.58	0	69.6	58.4	42.0
3-4 AM	483	0.0	1500	483	0	0.53	0	70.1	59.6	43.6
4-5 AM	440	0.0	1500	440	0	0.53	0	70.2	59.7	43.7
5-6 AM	519	0.0	1500	519	0	0.53	0	70.1	59.4	43.4
6-7 AM	785	0.0	1500	785	0	0.56	0	69.7	58.7	42.4
7-8 AM	1034	0.0	1499	1034	0	0.59	0	69.4	58.1	41.5
8-9 AM	1504	0.0	1499	1504	0	1.59	19	68.9	45.2	32.5
9-10 AM	2246	0.0	1500	1786	460	11.93+	310	67.9	14.0	30.8
10-11 AM	2897	0.0	1500	1500	1397	16.30+	400	67.1	10.8	30.8
11AM-NOON	3528	0.0	1500	1500	2028	16.26+	400	66.3	10.8	30.8
NOON-1PM	3822	0.0	1500	1500	2322	16.18+	400	64.8	10.8	30.8
1-2 PM	3923	0.0	1500	1500	2423	16.15+	400	64.0	10.8	30.8
2-3 PM	3927	0.0	1500	1500	2427	16.15+	400	64.0	10.8	30.8
3-4 PM	3931	0.0	1500	1500	2431	16.14+	400	64.0	10.8	30.8
4-5 PM	3741	0.0	1500	1500	2241	16.21+	400	65.3	10.8	30.8
5-6 PM	3464	0.0	1500	1500	1964	16.26+	400	66.4	10.8	30.8
6-7 PM	3086	0.0	1500	1500	1586	16.29+	400	66.9	10.8	30.8
7-8 PM	2674	0.0	1500	1500	1174	16.31+	400	67.4	10.8	30.8
8-9 PM	1877	0.0	1500	1513	364	16.30+	398	68.4	10.8	30.8
9-10 PM	1634	0.0	1499	1525	108	16.16+	394	68.7	10.9	30.8
10-11 PM	1212	0.0	1499	1212	0	10.97	279	69.2	15.0	32.2
11PM-MID	915	0.0	1500	915	0	0.85	11	69.6	54.3	41.9

+ INDICATES QUEUEING EXCEEDS USER-SPECIFIED MAXIMUM LIMIT

*----- SITE BREAKDOWN DELAYS -----*	
BREAKDOWN DURATION (MINS)	0
RANGE OF QUEUE DELAY - MIN (VEH-H) MAX	0.0
AV BREAKDOWNS PER DAY	0.00
AV QUEUE DELAY/DAY (VEH-H)	0.0
AV TOTAL DELAY/DAY (VEH-H)	0.0

*----- SITE ACCIDENT DELAYS -----*	
BREAKDOWN DURATION (MINS)	0
RANGE OF QUEUE DELAY - MIN (VEH-H) MAX	0
AV BREAKDOWNS PER DAY	0
AV QUEUE DELAY/DAY (VEH-H)	0
AV TOTAL DELAY/DAY (VEH-H)	0

AVERAGE ACCIDENT NUMBERS (PIA/DAY)	
MAIN ROUTE WITHOUT WORKS	0.0281
MAIN ROUTE WITH WORKS	0.0145
'DIVERSION'	0.0270
PIA: Personal Injury Accidents	
IMPACTS ON ROAD USERS	
ROAD USER COSTS PER DAY	\$186,564
CONGESTED HOURS PER DAY*	13

\*Delays Exceeding User-Specified Maximum

**IH 43/94: BECHER ST TO MITCHELL INTERCHANGE (MILWAUKEE COUNTY)**  
**CONTINUOUS (24 HOUR) 2 LANE CLOSURE**  
**NO DIVERSION ROUTE (MAX QUEUE METHOD)**

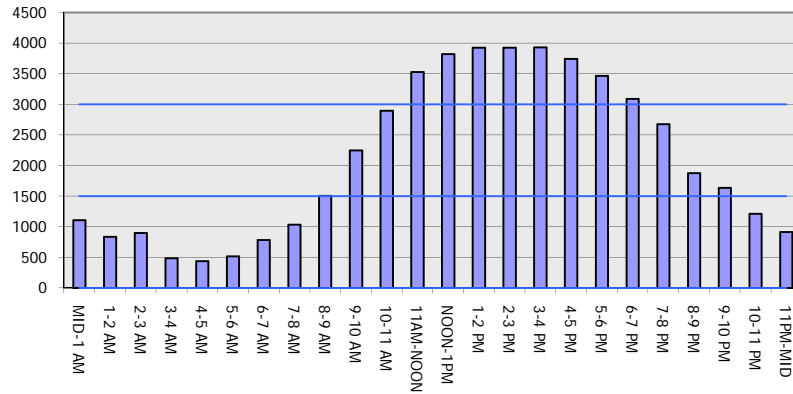
**OCTOBER**

Analyzed for 2009  
 Construction Season

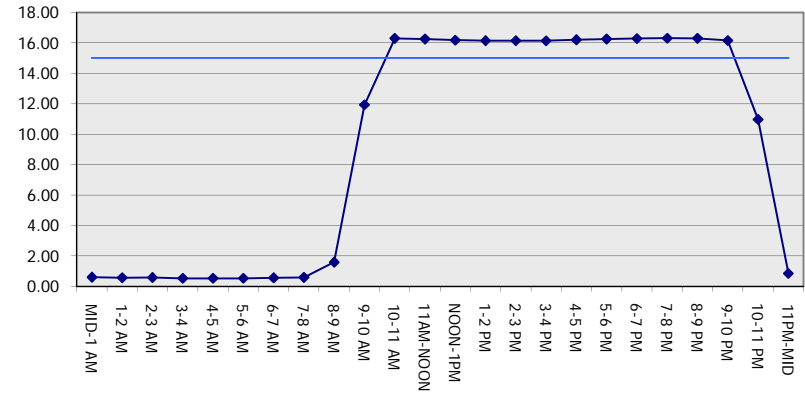
**GRAPHICAL REPRESENTATION OF TRAFFIC MODEL INPUT AND OUTPUT**

**SUNDAY WESTBOUND DIRECTION**

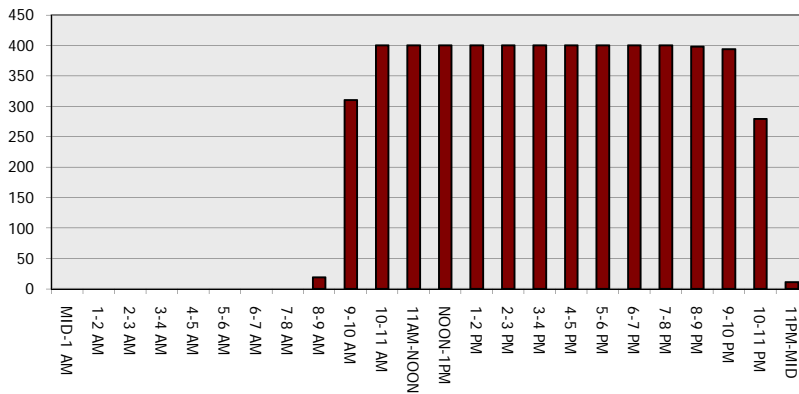
**Main Route - Traffic Demand (Vehicles Per Hour)**



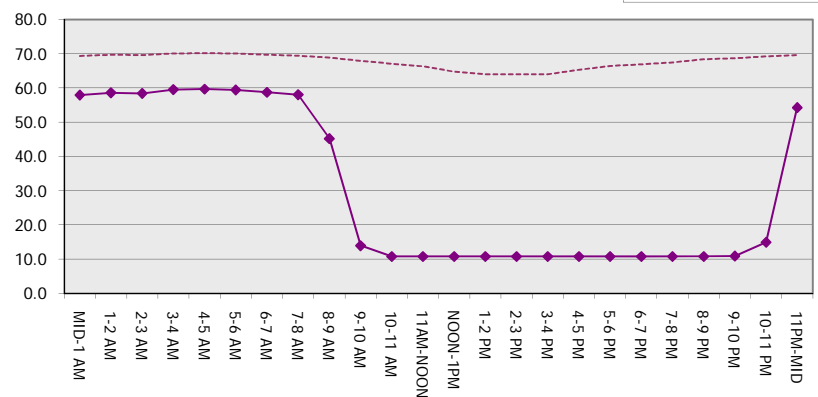
**Main Route Average Delay Per Vehicle (Minutes)**



**Main Route - Average Queue Length (Vehicles)**



**Main Route - Average Speed (MPH)**



<b>IH 43/94: BECHER ST TO MITCHELL INTERCHANGE (MILWAUKEE COUNTY)</b> <b>CONTINUOUS (24 HOUR) 2 LANE CLOSURE</b> <b>NO DIVERSION ROUTE (MAX QUEUE METHOD)</b>	<b>OCTOBER</b>
	Analyzed for 2009 Construction Season

**SUMMARY OF TRAFFIC MODEL OUTPUT**

SUNDAY EASTBOUND DIRECTION

TIME OF DAY	FLOWS AND CAPACITY IN VEH/HR							AVERAGE SPEEDS IN MPH			
	MAIN ROUTE		SITE CAPA CITY	FLOW		AV.DEL PER VEH (MINS)	AVERAGE QUEUE (VEH)	MAIN ROUTE		SITE	
	DEMAND FLOW	PCT HEAVY		MAIN ROUTE	'DIVER TED'			WITHOUT WORK ZONE	WITH WORK ZONE		
MID-1 AM	990	0.0	1500	990	0	0.59	0	69.5	58.2	41.7	
1-2 AM	547	0.0	1500	547	0	0.54	0	70.0	59.4	43.3	
2-3 AM	457	0.0	1500	457	0	0.53	0	70.2	59.6	43.7	
3-4 AM	291	0.0	1500	291	0	0.51	0	70.2	60.0	44.3	
4-5 AM	294	0.0	1500	294	0	0.51	0	70.2	60.0	44.3	
5-6 AM	464	0.0	1500	464	0	0.53	0	70.2	59.6	43.7	
6-7 AM	793	0.0	1500	793	0	0.56	0	69.7	58.7	42.4	
7-8 AM	1085	0.0	1499	1085	0	0.63	0	69.4	57.4	40.5	
8-9 AM	1520	0.0	1499	1520	0	1.57	16	68.9	45.5	31.8	
9-10 AM	1992	0.0	1500	1872	120	9.98+	265	68.2	16.1	30.8	
10-11 AM	2395	0.0	1500	1500	895	16.33+	400	67.8	10.8	30.8	
11AM-NOON	2748	0.0	1500	1500	1248	16.31+	400	67.3	10.8	30.8	
NOON-1PM	3073	0.0	1500	1500	1573	16.29+	400	66.9	10.8	30.8	
1-2 PM	3136	0.0	1500	1500	1636	16.28+	400	66.8	10.8	30.8	
2-3 PM	3153	0.0	1500	1500	1653	16.28+	400	66.8	10.8	30.8	
3-4 PM	3318	0.0	1500	1500	1818	16.27+	400	66.6	10.8	30.8	
4-5 PM	3366	0.0	1500	1500	1866	16.27+	400	66.6	10.8	30.8	
5-6 PM	3325	0.0	1500	1500	1825	16.27+	400	66.6	10.8	30.8	
6-7 PM	3132	0.0	1500	1500	1632	16.28+	400	66.8	10.8	30.8	
7-8 PM	2600	0.0	1500	1500	1100	16.32+	400	67.5	10.8	30.8	
8-9 PM	2023	0.0	1500	1500	523	16.35+	400	68.2	10.8	30.8	
9-10 PM	1718	0.0	1499	1462	256	16.21+	395	68.6	10.9	30.8	
10-11 PM	1266	0.0	1499	1266	0	12.38	307	69.2	13.6	31.2	
11PM-MID	927	0.0	1500	927	0	1.15	25	69.6	50.4	41.7	

+ INDICATES QUEUEING EXCEEDS USER-SPECIFIED MAXIMUM LIMIT

*----- SITE BREAKDOWN DELAYS -----*	
BREAKDOWN DURATION (MINS)	0
RANGE OF QUEUE DELAY - MIN (VEH-H) MAX	0.0
AV BREAKDOWNS PER DAY	0.00
AV QUEUE DELAY/DAY (VEH-H)	0.0
AV TOTAL DELAY/DAY (VEH-H)	0.0

*----- SITE ACCIDENT DELAYS -----*	
BREAKDOWN DURATION (MINS)	0
RANGE OF QUEUE DELAY - MIN (VEH-H) MAX	0
AV BREAKDOWNS PER DAY	0
AV QUEUE DELAY/DAY (VEH-H)	0
AV TOTAL DELAY/DAY (VEH-H)	0

AVERAGE ACCIDENT NUMBERS (PIA/DAY)	
MAIN ROUTE WITHOUT WORKS	0.0248
MAIN ROUTE WITH WORKS	0.0140
'DIVERSION'	0.0208

PIA: Personal Injury Accidents

ECONOMIC IMPACT ON ROAD USERS	
ROAD USER COSTS PER DAY	\$165,477
CONGESTED HOURS PER DAY*	13

\*Delays Exceeding User-Specified Maximum

**IH 43/94: BECHER ST TO MITCHELL INTERCHANGE (MILWAUKEE COUNTY)**  
**CONTINUOUS (24 HOUR) 2 LANE CLOSURE**  
**NO DIVERSION ROUTE (MAX QUEUE METHOD)**

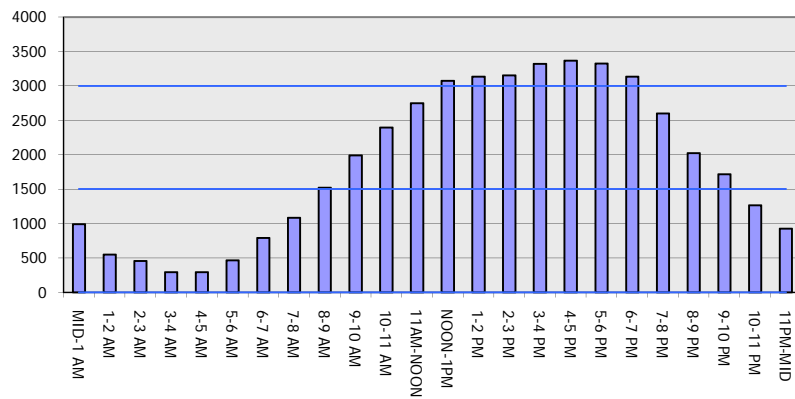
**OCTOBER**

Analyzed for 2009  
 Construction Season

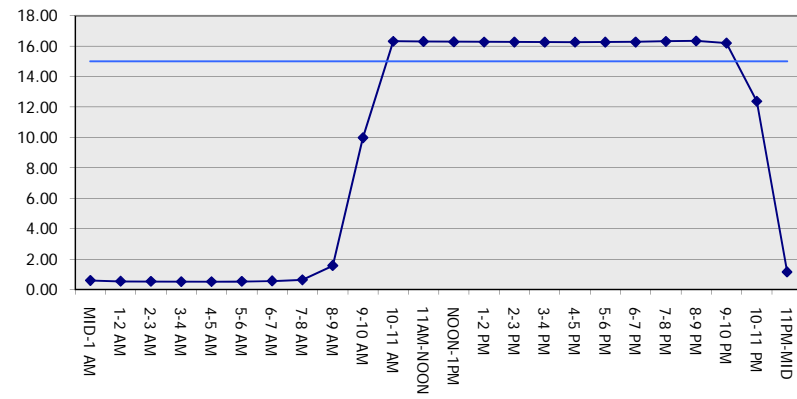
**GRAPHICAL REPRESENTATION OF TRAFFIC MODEL INPUT AND OUTPUT**

**SUNDAY EASTBOUND DIRECTION**

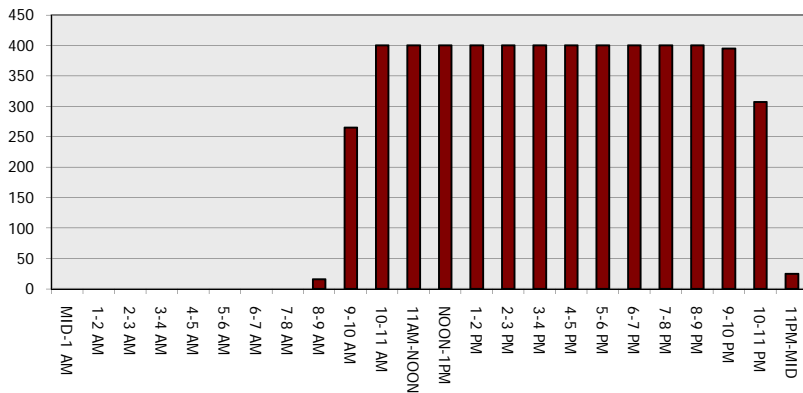
**Main Route - Traffic Demand (Vehicles Per Hour)**



**Main Route Average Delay Per Vehicle (Minutes)**



**Main Route - Average Queue Length (Vehicles)**



**Main Route - Average Speed (MPH)**

