

**IH 94: STH 181 TO USH 41 (MILWAUKEE COUNTY)
CONTINUOUS (24 HOUR) 2 LANE CLOSURE
NO DIVERSION ROUTE (MAX QUEUE METHOD)**

OCTOBER

Analyzed for 2009
Construction Season

SUMMARY OF TRAFFIC MODEL OUTPUT

SATURDAY WESTBOUND DIRECTION

TIME OF DAY	FLOWS AND CAPACITY IN VEH/HR						AVERAGE SPEEDS IN MPH				
	MAIN ROUTE		SITE CAPA CITY	FLOW		AV.DEL PER VEH (MINS)	AVERAGE QUEUE (VEH)	MAIN ROUTE		SITE	
	DEMAND FLOW	PCT HEAVY		MAIN ROUTE	'DIVER TED'			WITHOUT WORK ZONE	WITH WORK ZONE		
MID-1 AM	1438	0.0	1499	1402	36	15.73+	384	68.9	8.4	30.8	
1-2 AM	1048	0.0	1499	1048	0	3.04	122	69.4	28.1	37.6	
2-3 AM	986	0.0	1500	986	0	0.59	0	69.5	54.2	41.7	
3-4 AM	615	0.0	1500	615	0	0.55	0	70.0	55.3	43.1	
4-5 AM	586	0.0	1500	586	0	0.54	0	70.0	55.4	43.2	
5-6 AM	935	0.0	1499	935	0	0.58	0	69.6	54.3	41.9	
6-7 AM	1550	0.0	1499	1550	0	1.76	27	68.8	37.3	32.1	
7-8 AM	2312	0.0	1500	1814	498	13.24+	336	67.9	9.6	30.8	
8-9 AM	3007	0.0	1499	1495	1511	16.59+	407	67.0	8.1	30.8	
9-10 AM	3390	0.0	1499	1500	1890	16.61+	408	66.5	8.1	30.8	
10-11 AM	3679	0.0	1500	1500	2179	16.58+	408	65.7	8.1	30.8	
11AM-NOON	4004	0.0	1500	1500	2504	16.50+	408	63.5	8.1	30.8	
NOON-1PM	4383	0.0	1500	1500	2883	16.40+	408	60.9	8.1	30.8	
1-2 PM	4220	0.0	1500	1500	2720	16.44+	408	62.0	8.1	30.8	
2-3 PM	4372	0.0	1500	1500	2872	16.40+	408	61.0	8.1	30.8	
3-4 PM	4226	0.0	1500	1500	2726	16.44+	408	62.0	8.1	30.8	
4-5 PM	4052	0.0	1500	1500	2552	16.49+	408	63.2	8.1	30.8	
5-6 PM	3713	0.0	1500	1500	2213	16.57+	408	65.5	8.1	30.8	
6-7 PM	3347	0.0	1500	1500	1847	16.61+	408	66.6	8.1	30.8	
7-8 PM	2769	0.0	1499	1497	1273	16.56+	406	67.3	8.1	30.8	
8-9 PM	2299	0.0	1499	1500	799	16.54+	405	67.9	8.1	30.8	
9-10 PM	2488	0.0	1500	1499	989	16.54+	405	67.6	8.1	30.8	
10-11 PM	3024	0.0	1499	1497	1527	16.60+	407	67.0	8.1	30.8	
11PM-MID	2091	0.0	1500	1500	591	16.55+	405	68.1	8.1	30.8	

+ INDICATES QUEUEING EXCEEDS USER-SPECIFIED MAXIMUM LIMIT

----- SITE BREAKDOWN DELAYS -----	
BREAKDOWN DURATION (MINS)	0
RANGE OF QUEUE DELAY - MIN (VEH-H) MAX	0.0
AV BREAKDOWNS PER DAY	0.00
AV QUEUE DELAY/DAY (VEH-H)	0.0
AV TOTAL DELAY/DAY (VEH-H)	0.0

----- SITE ACCIDENT DELAYS -----	
BREAKDOWN DURATION (MINS)	0
RANGE OF QUEUE DELAY - MIN (VEH-H) MAX	0
AV BREAKDOWNS PER DAY	0
AV QUEUE DELAY/DAY (VEH-H)	0
AV TOTAL DELAY/DAY (VEH-H)	0

AVERAGE ACCIDENT NUMBERS (PIA/DAY)	
MAIN ROUTE WITHOUT WORKS	0.0246
MAIN ROUTE WITH WORKS	0.0104
'DIVERSION'	0.0279
PIA: Personal Injury Accidents	
IMPACTS ON ROAD USERS	
ROAD USER COSTS PER DAY	\$264,426
CONGESTED HOURS PER DAY*	18

*Delays Exceeding User-Specified Maximum

**IH 94: STH 181 TO USH 41 (MILWAUKEE COUNTY)
CONTINUOUS (24 HOUR) 2 LANE CLOSURE
NO DIVERSION ROUTE (MAX QUEUE METHOD)**

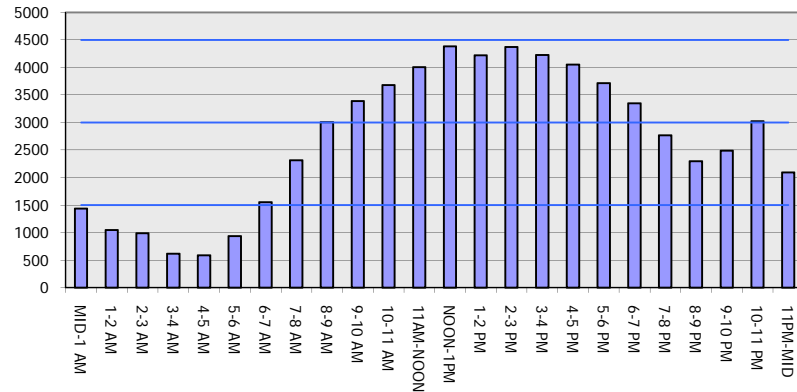
OCTOBER

Analyzed for 2009
Construction Season

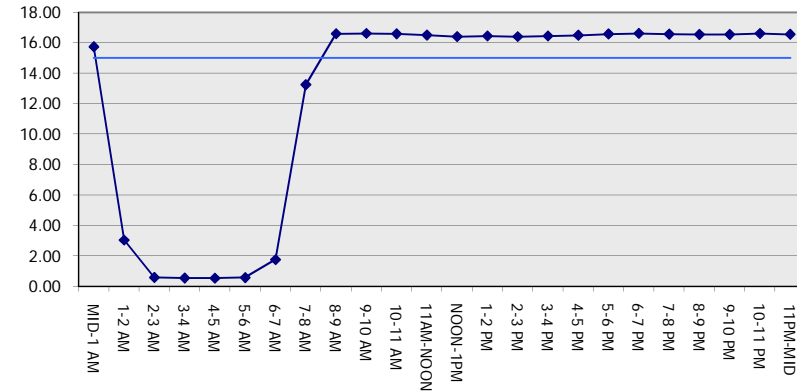
GRAPHICAL REPRESENTATION OF TRAFFIC MODEL INPUT AND OUTPUT

SATURDAY WESTBOUND DIRECTION

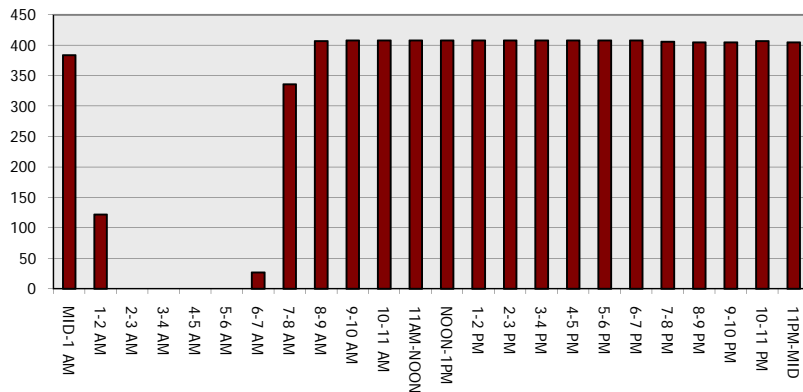
Main Route - Traffic Demand (Vehicles Per Hour)



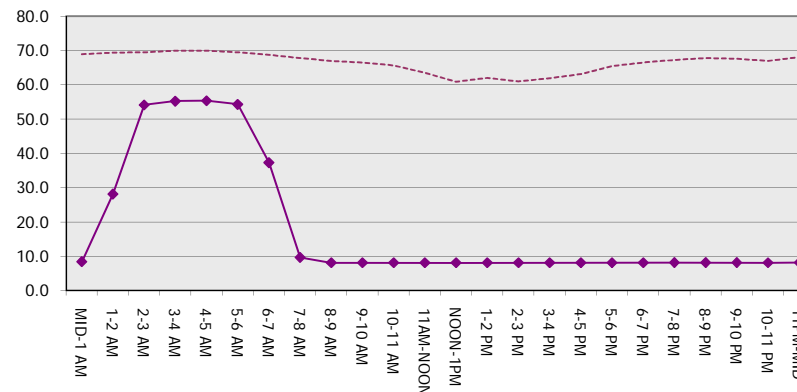
Main Route Average Delay Per Vehicle (Minutes)



Main Route - Average Queue Length (Vehicles)



Main Route - Average Speed (MPH)



IH 94: STH 181 TO USH 41 (MILWAUKEE COUNTY) CONTINUOUS (24 HOUR) 2 LANE CLOSURE NO DIVERSION ROUTE (MAX QUEUE METHOD)	OCTOBER
	Analyzed for 2009 Construction Season

SUMMARY OF TRAFFIC MODEL OUTPUT

SATURDAY EASTBOUND DIRECTION

TIME OF DAY	FLOWS AND CAPACITY IN VEH/HR							AVERAGE SPEEDS IN MPH			
	MAIN ROUTE		SITE CAPA CITY	FLOW		AV.DEL PER VEH (MINS)	AVERAGE QUEUE (VEH)	MAIN ROUTE		SITE	
	DEMAND FLOW	PCT HEAVY		MAIN ROUTE	'DIVER TED'			WITHOUT WORK ZONE	WITH WORK ZONE		
MID-1 AM	1259	0.0	1499	1223	36	12.84+	324	69.2	9.8	31.9	
1-2 AM	606	0.0	1500	606	0	0.81	14	70.0	50.1	43.0	
2-3 AM	653	0.0	1500	653	0	0.55	0	69.9	55.2	42.9	
3-4 AM	347	0.0	1500	347	0	0.51	0	70.2	56.1	44.1	
4-5 AM	399	0.0	1500	399	0	0.52	0	70.2	56.0	43.9	
5-6 AM	780	0.0	1500	780	0	0.56	0	69.7	54.8	42.5	
6-7 AM	1398	0.0	1499	1398	0	1.10	5	69.0	45.1	33.8	
7-8 AM	1956	0.0	1500	1956	0	7.48	214	68.3	15.2	30.8	
8-9 AM	2553	0.0	1500	1491	1062	16.58+	406	67.6	8.1	30.8	
9-10 AM	2942	0.0	1499	1488	1454	16.59+	407	67.1	8.1	30.8	
10-11 AM	3458	0.0	1499	1496	1961	16.59+	407	66.4	8.1	30.8	
11AM-NOON	3968	0.0	1499	1500	2468	16.51+	408	63.7	8.1	30.8	
NOON-1PM	4098	0.0	1500	1500	2598	16.48+	408	62.8	8.1	30.8	
1-2 PM	4104	0.0	1500	1500	2604	16.48+	408	62.8	8.1	30.8	
2-3 PM	4177	0.0	1500	1500	2677	16.46+	408	62.3	8.1	30.8	
3-4 PM	4296	0.0	1500	1500	2796	16.42+	408	61.5	8.1	30.8	
4-5 PM	4348	0.0	1500	1500	2848	16.41+	408	61.2	8.1	30.8	
5-6 PM	4609	0.0	1500	1500	3109	16.33+	408	59.4	8.1	30.8	
6-7 PM	4507	0.0	1500	1500	3007	16.36+	408	60.1	8.1	30.8	
7-8 PM	3926	0.0	1500	1500	2426	16.52+	408	64.0	8.1	30.8	
8-9 PM	2940	0.0	1499	1490	1450	16.58+	406	67.1	8.1	30.8	
9-10 PM	2663	0.0	1499	1494	1169	16.56+	406	67.4	8.1	30.8	
10-11 PM	2555	0.0	1499	1496	1059	16.55+	405	67.6	8.1	30.8	
11PM-MID	1995	0.0	1499	1499	496	16.55+	405	68.2	8.1	30.8	

+ INDICATES QUEUEING EXCEEDS USER-SPECIFIED MAXIMUM LIMIT

----- SITE BREAKDOWN DELAYS -----	
BREAKDOWN DURATION (MINS)	0
RANGE OF QUEUE DELAY - MIN (VEH-H) MAX	0.0
AV BREAKDOWNS PER DAY	0.00
AV QUEUE DELAY/DAY (VEH-H)	0.0
AV TOTAL DELAY/DAY (VEH-H)	0.0

----- SITE ACCIDENT DELAYS -----	
BREAKDOWN DURATION (MINS)	0
RANGE OF QUEUE DELAY - MIN (VEH-H) MAX	0
AV BREAKDOWNS PER DAY	0
AV QUEUE DELAY/DAY (VEH-H)	0
AV TOTAL DELAY/DAY (VEH-H)	0

AVERAGE ACCIDENT NUMBERS (PIA/DAY)	
MAIN ROUTE WITHOUT WORKS	0.0246
MAIN ROUTE WITH WORKS	0.0099
'DIVERSION'	0.0294

PIA: Personal Injury Accidents

ECONOMIC IMPACT ON ROAD USERS	
ROAD USER COSTS PER DAY	\$265,912
CONGESTED HOURS PER DAY*	17

*Delays Exceeding User-Specified Maximum

**IH 94: STH 181 TO USH 41 (MILWAUKEE COUNTY)
 CONTINUOUS (24 HOUR) 2 LANE CLOSURE
 NO DIVERSION ROUTE (MAX QUEUE METHOD)**

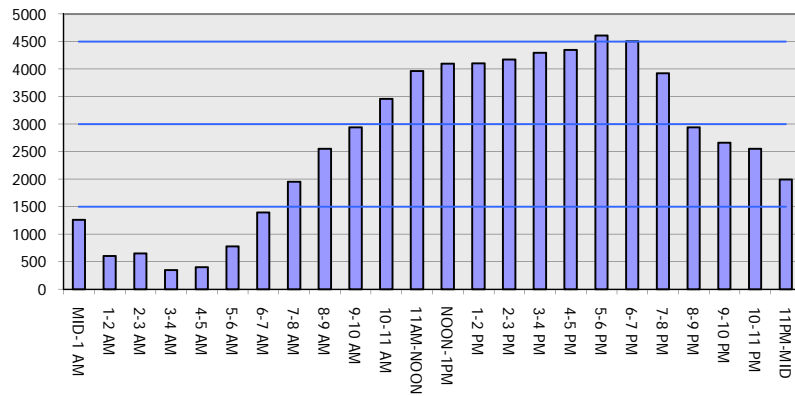
OCTOBER

Analyzed for 2009
 Construction Season

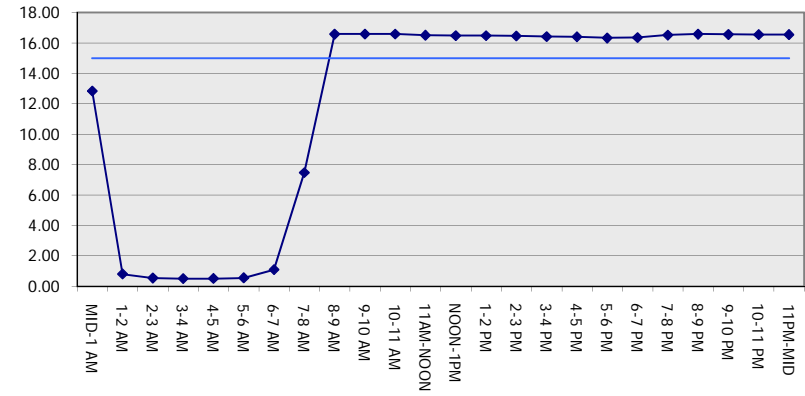
GRAPHICAL REPRESENTATION OF TRAFFIC MODEL INPUT AND OUTPUT

SATURDAY EASTBOUND DIRECTION

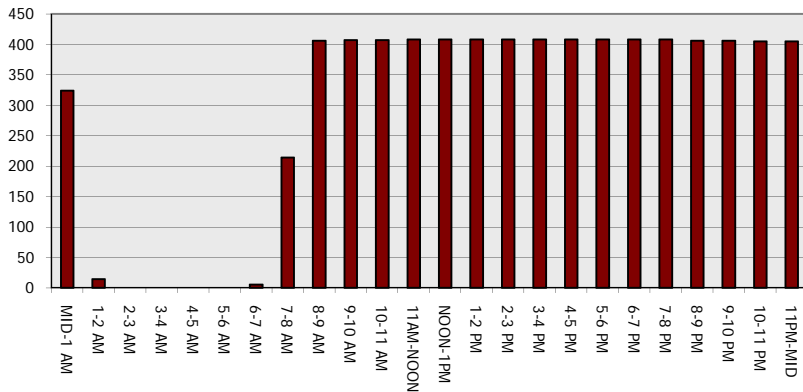
Main Route - Traffic Demand (Vehicles Per Hour)



Main Route Average Delay Per Vehicle (Minutes)



Main Route - Average Queue Length (Vehicles)



Main Route - Average Speed (MPH)

