

<b>IH 94: STH 181 TO USH 41 (MILWAUKEE COUNTY)                  CONTINUOUS (24 HOUR) 2 LANE CLOSURE                  NO DIVERSION ROUTE (MAX QUEUE METHOD)</b>	<b>OCTOBER</b>
	Analyzed for 2009 Construction Season

**SUMMARY OF TRAFFIC MODEL OUTPUT**

MON-THUR                  WESTBOUND DIRECTION

TIME OF DAY	FLOWS AND CAPACITY IN VEH/HR							AVERAGE SPEEDS IN MPH			
	MAIN ROUTE		SITE CAPA CITY	FLOW		AV.DEL PER VEH (MINS)	AVERAGE QUEUE (VEH)	MAIN ROUTE		SITE	
	DEMAND FLOW	PCT HEAVY		MAIN ROUTE	'DIVER TED'			WITHOUT WORK ZONE	WITH WORK ZONE		
MID-1 AM	662	0.0	1500	662	0	0.91	19	69.9	48.5	42.8	
1-2 AM	419	0.0	1500	419	0	0.52	0	70.2	55.9	43.8	
2-3 AM	332	0.0	1500	332	0	0.51	0	70.2	56.1	44.2	
3-4 AM	383	0.0	1500	383	0	0.52	0	70.2	56.0	44.0	
4-5 AM	710	0.0	1500	710	0	0.56	0	69.9	55.0	42.7	
5-6 AM	2179	0.0	1499	2117	62	5.90+	211	68.0	18.3	30.8	
6-7 AM	4398	0.0	1500	1298	3100	15.79+	399	60.8	8.3	35.1	
7-8 AM	5803	0.0	1500	1500	4303	15.92+	408	51.2	8.1	30.8	
8-9 AM	4964	0.0	1500	1500	3464	16.22+	408	56.9	8.1	30.8	
9-10 AM	3791	0.0	1500	1500	2291	16.56+	408	65.0	8.1	30.8	
10-11 AM	3677	0.0	1500	1500	2177	16.58+	408	65.8	8.1	30.8	
11AM-NOON	4109	0.0	1500	1500	2609	16.47+	408	62.8	8.1	30.8	
NOON-1PM	4390	0.0	1500	1500	2890	16.40+	408	60.9	8.1	30.8	
1-2 PM	4636	0.0	1500	1500	3136	16.33+	408	59.2	8.1	30.8	
2-3 PM	5724	0.0	1500	1500	4224	15.95+	408	51.7	8.1	30.8	
3-4 PM	6293	0.0	1500	1500	4793	15.71+	408	47.9	8.1	30.8	
4-5 PM	5721	0.0	1500	1500	4221	15.96+	408	51.8	8.1	30.8	
5-6 PM	5476	0.0	1500	1500	3976	16.05+	408	53.5	8.1	30.8	
6-7 PM	4916	0.0	1500	1500	3416	16.24+	408	57.3	8.1	30.8	
7-8 PM	3455	0.0	1500	1500	1955	16.61+	408	66.4	8.1	30.8	
8-9 PM	2838	0.0	1500	1498	1340	16.57+	406	67.2	8.1	30.8	
9-10 PM	2456	0.0	1500	1500	957	16.54+	405	67.7	8.1	30.8	
10-11 PM	1804	0.0	1500	1500	304	16.55+	404	68.5	8.1	30.8	
11PM-MID	1259	0.0	1499	1259	0	13.05+	326	69.2	9.7	31.5	

+ INDICATES QUEUEING EXCEEDS USER-SPECIFIED MAXIMUM LIMIT

*----- SITE BREAKDOWN DELAYS -----*	
BREAKDOWN DURATION (MINS)	0
RANGE OF QUEUE DELAY - MIN (VEH-H) MAX	0.0
AV BREAKDOWNS PER DAY	0.00
AV QUEUE DELAY/DAY (VEH-H)	0.0
AV TOTAL DELAY/DAY (VEH-H)	0.0

*----- SITE ACCIDENT DELAYS -----*	
BREAKDOWN DURATION (MINS)	0
RANGE OF QUEUE DELAY - MIN (VEH-H) MAX	0
AV BREAKDOWNS PER DAY	0
AV QUEUE DELAY/DAY (VEH-H)	0
AV TOTAL DELAY/DAY (VEH-H)	0

AVERAGE ACCIDENT NUMBERS (PIA/DAY)	
MAIN ROUTE WITHOUT WORKS	0.0307
MAIN ROUTE WITH WORKS	0.0098
'DIVERSION'	0.0435
PIA: Personal Injury Accidents	
IMPACTS ON ROAD USERS	
ROAD USER COSTS PER DAY	\$269,806
CONGESTED HOURS PER DAY*	19

\*Delays Exceeding User-Specified Maximum

**IH 94: STH 181 TO USH 41 (MILWAUKEE COUNTY)  
CONTINUOUS (24 HOUR) 2 LANE CLOSURE  
NO DIVERSION ROUTE (MAX QUEUE METHOD)**

**OCTOBER**

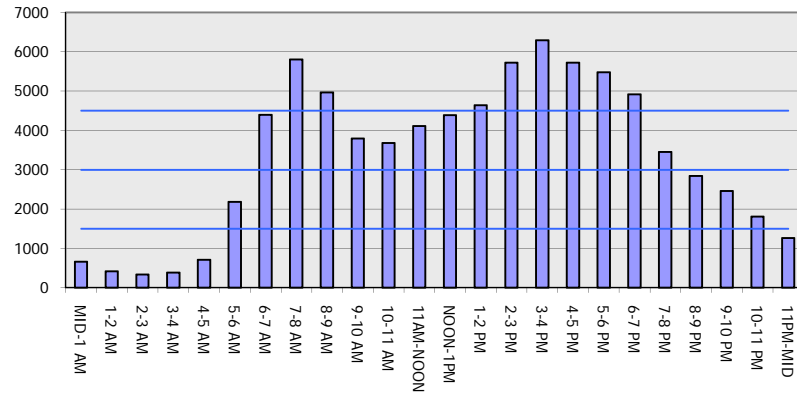
Analyzed for 2009  
Construction Season

**GRAPHICAL REPRESENTATION OF TRAFFIC MODEL INPUT AND OUTPUT**

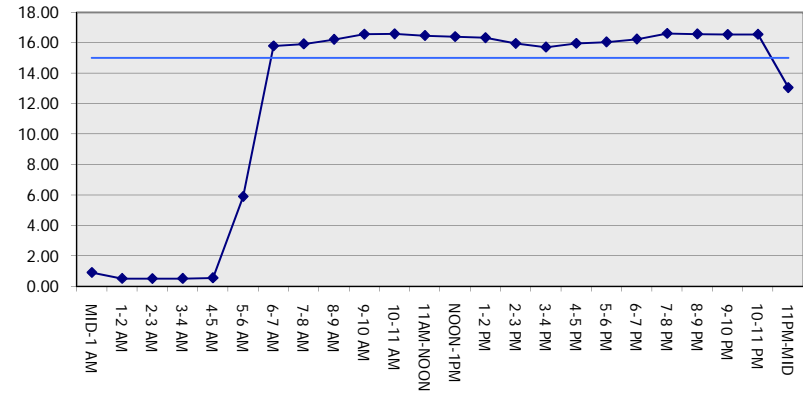
**MON-THUR**

**WESTBOUND DIRECTION**

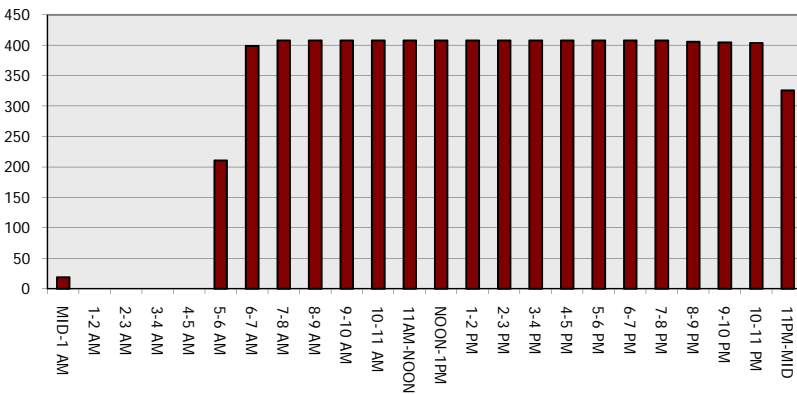
**Main Route - Traffic Demand (Vehicles Per Hour)**



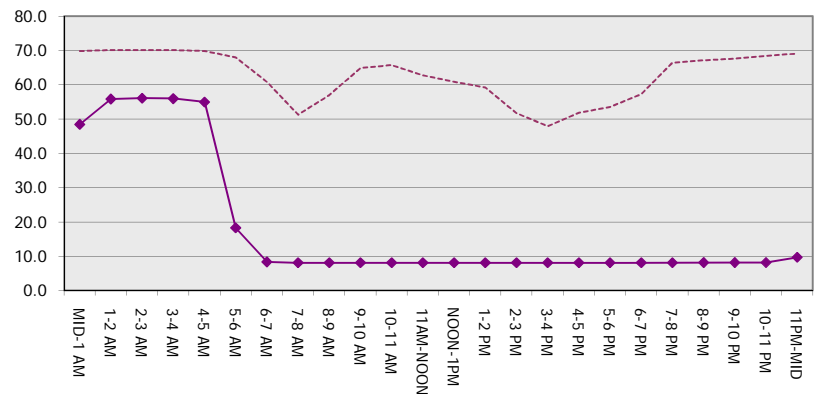
**Main Route Average Delay Per Vehicle (Minutes)**



**Main Route - Average Queue Length (Vehicles)**



**Main Route - Average Speed (MPH)**



<b>IH 94: STH 181 TO USH 41 (MILWAUKEE COUNTY)</b> <b>CONTINUOUS (24 HOUR) 2 LANE CLOSURE</b> <b>NO DIVERSION ROUTE (MAX QUEUE METHOD)</b>	<b>OCTOBER</b>
	Analyzed for 2009 Construction Season

**SUMMARY OF TRAFFIC MODEL OUTPUT**

MON-THUR                      EASTBOUND DIRECTION

TIME OF DAY	FLOWS AND CAPACITY IN VEH/HR							AVERAGE SPEEDS IN MPH			
	MAIN ROUTE		SITE CAPA CITY	FLOW		AV.DEL PER VEH (MINS)	AVERAGE QUEUE (VEH)	MAIN ROUTE		SITE	
	DEMAND FLOW	PCT HEAVY		MAIN ROUTE	'DIVER TED'			WITHOUT WORK ZONE	WITH WORK ZONE		
MID-1 AM	576	0.0	1500	576	0	0.85	17	70.0	49.6	43.1	
1-2 AM	354	0.0	1500	354	0	0.52	0	70.2	56.1	44.1	
2-3 AM	314	0.0	1500	314	0	0.51	0	70.2	56.2	44.2	
3-4 AM	360	0.0	1500	360	0	0.52	0	70.2	56.1	44.0	
4-5 AM	582	0.0	1500	582	0	0.54	0	70.0	55.4	43.2	
5-6 AM	2208	0.0	1499	2191	17	4.88+	204	68.0	21.0	30.8	
6-7 AM	5229	0.0	1500	1062	4167	15.21+	399	55.1	8.5	39.2	
7-8 AM	5735	0.0	1500	1500	4235	15.62+	408	51.7	8.3	37.4	
8-9 AM	5010	0.0	1500	1501	3509	15.88+	408	56.6	8.3	37.4	
9-10 AM	4378	0.0	1500	1510	2868	16.07+	407	60.9	8.2	36.6	
10-11 AM	3789	0.0	1500	1512	2277	16.26+	407	65.0	8.2	35.5	
11AM-NOON	3997	0.0	1500	1510	2487	16.26+	407	63.5	8.2	34.7	
NOON-1PM	4115	0.0	1500	1506	2609	16.26+	407	62.7	8.2	34.2	
1-2 PM	4154	0.0	1500	1503	2650	16.27+	407	62.5	8.2	34.0	
2-3 PM	4688	0.0	1499	1500	3188	16.13+	408	58.8	8.1	34.0	
3-4 PM	5043	0.0	1500	1500	3543	16.02+	408	56.4	8.1	34.0	
4-5 PM	5029	0.0	1500	1500	3529	16.03+	408	56.5	8.1	34.0	
5-6 PM	5160	0.0	1500	1500	3660	15.98+	408	55.6	8.1	34.0	
6-7 PM	4476	0.0	1500	1500	2976	16.20+	408	60.3	8.1	34.0	
7-8 PM	3443	0.0	1500	1512	1931	16.43+	407	66.4	8.1	33.2	
8-9 PM	2845	0.0	1500	1513	1333	16.49+	406	67.2	8.1	32.3	
9-10 PM	2688	0.0	1500	1512	1176	16.54+	406	67.4	8.1	31.5	
10-11 PM	1957	0.0	1500	1578	379	16.20+	396	68.3	8.2	30.9	
11PM-MID	1257	0.0	1499	1257	0	13.24+	332	69.2	9.6	31.8	

+ INDICATES QUEUEING EXCEEDS USER-SPECIFIED MAXIMUM LIMIT

BREAKDOWN DURATION (MINS)	0
RANGE OF QUEUE DELAY - MIN (VEH-H) MAX	0.0
AV BREAKDOWNS PER DAY	0.00
AV QUEUE DELAY/DAY (VEH-H)	0.0
AV TOTAL DELAY/DAY (VEH-H)	0.0

BREAKDOWN DURATION (MINS)	0
RANGE OF QUEUE DELAY - MIN (VEH-H) MAX	0
AV BREAKDOWNS PER DAY	0
AV QUEUE DELAY/DAY (VEH-H)	0
AV TOTAL DELAY/DAY (VEH-H)	0

MAIN ROUTE WITHOUT WORKS	0.0295
MAIN ROUTE WITH WORKS	0.0097
'DIVERSION'	0.0411

PIA: Personal Injury Accidents

ROAD USER COSTS PER DAY	\$257,605
CONGESTED HOURS PER DAY*	19

\*Delays Exceeding User-Specified Maximum

**IH 94: STH 181 TO USH 41 (MILWAUKEE COUNTY)  
CONTINUOUS (24 HOUR) 2 LANE CLOSURE  
NO DIVERSION ROUTE (MAX QUEUE METHOD)**

**OCTOBER**

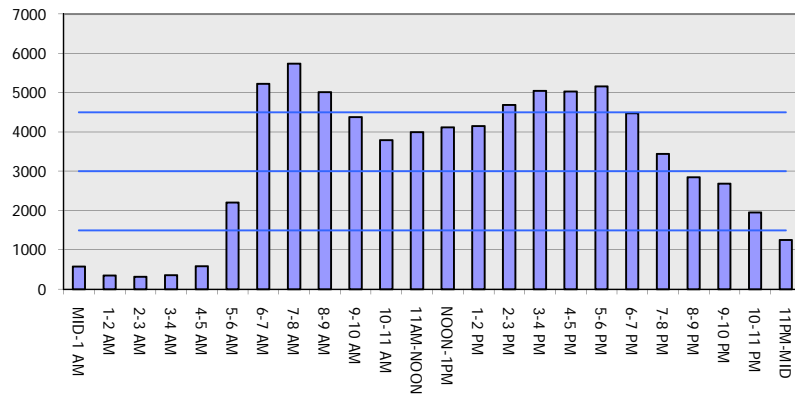
Analyzed for 2009  
Construction Season

**GRAPHICAL REPRESENTATION OF TRAFFIC MODEL INPUT AND OUTPUT**

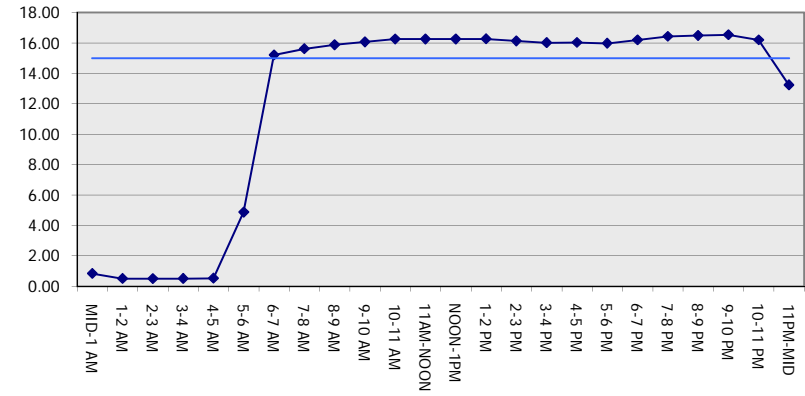
**MON-THUR**

**EASTBOUND DIRECTION**

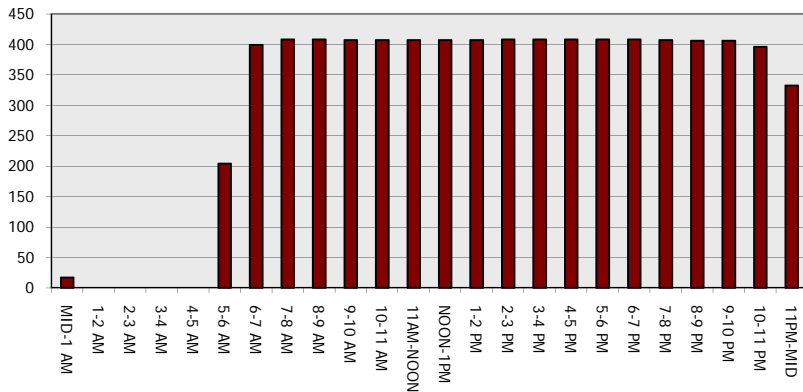
**Main Route - Traffic Demand (Vehicles Per Hour)**



**Main Route Average Delay Per Vehicle (Minutes)**



**Main Route - Average Queue Length (Vehicles)**



**Main Route - Average Speed (MPH)**

