

<b>IH 94: STH 181 TO USH 41 (MILWAUKEE COUNTY)                  CONTINUOUS (24 HOUR) 2 LANE CLOSURE                  NO DIVERSION ROUTE (MAX QUEUE METHOD)</b>	<b>AUGUST</b>
	Analyzed for 2009 Construction Season

**SUMMARY OF TRAFFIC MODEL OUTPUT**

SUNDAY WESTBOUND DIRECTION

TIME OF DAY	FLOWS AND CAPACITY IN VEH/HR							AVERAGE SPEEDS IN MPH			
	MAIN ROUTE		SITE CAPA CITY	FLOW		AV.DEL PER VEH (MINS)	AVERAGE QUEUE (VEH)	MAIN ROUTE		SITE	
	DEMAND FLOW	PCT HEAVY		MAIN ROUTE	'DIVER TED'			WITHOUT WORK ZONE	WITH WORK ZONE		
MID-1 AM	2150	0.0	1500	1815	335	13.62+	344	68.1	9.4	30.8	
1-2 AM	1412	0.0	1499	1329	83	14.64+	357	69.0	8.8	30.8	
2-3 AM	1138	0.0	1499	1138	0	3.51	123	69.3	25.7	36.0	
3-4 AM	592	0.0	1500	592	0	0.54	0	70.0	55.4	43.2	
4-5 AM	383	0.0	1500	383	0	0.52	0	70.2	56.0	44.0	
5-6 AM	455	0.0	1500	455	0	0.53	0	70.2	55.8	43.7	
6-7 AM	854	0.0	1500	854	0	0.57	0	69.7	54.6	42.2	
7-8 AM	1075	0.0	1499	1075	0	0.61	0	69.4	53.7	41.0	
8-9 AM	1391	0.0	1499	1391	0	1.03	3	69.0	46.1	33.8	
9-10 AM	2152	0.0	1500	1924	228	8.78+	249	68.1	13.4	30.8	
10-11 AM	3009	0.0	1500	1493	1516	16.59+	407	67.0	8.1	30.8	
11AM-NOON	3471	0.0	1499	1500	1971	16.61+	408	66.4	8.1	30.8	
NOON-1PM	4010	0.0	1500	1500	2510	16.50+	408	63.5	8.1	30.8	
1-2 PM	4105	0.0	1500	1500	2605	16.48+	408	62.8	8.1	30.8	
2-3 PM	4011	0.0	1500	1500	2511	16.50+	408	63.5	8.1	30.8	
3-4 PM	4306	0.0	1500	1500	2806	16.42+	408	61.4	8.1	30.8	
4-5 PM	4146	0.0	1500	1500	2646	16.46+	408	62.5	8.1	30.8	
5-6 PM	3329	0.0	1500	1498	1831	16.61+	407	66.6	8.1	30.8	
6-7 PM	2954	0.0	1499	1494	1460	16.59+	407	67.1	8.1	30.8	
7-8 PM	2385	0.0	1500	1499	886	16.54+	405	67.8	8.1	30.8	
8-9 PM	2083	0.0	1499	1499	584	16.55+	405	68.1	8.1	30.8	
9-10 PM	1955	0.0	1499	1500	455	16.55+	405	68.3	8.1	30.8	
10-11 PM	1505	0.0	1499	1447	58	16.20+	395	68.9	8.3	30.8	
11PM-MID	1258	0.0	1499	1258	0	9.22	226	69.2	12.7	31.0	

+ INDICATES QUEUEING EXCEEDS USER-SPECIFIED MAXIMUM LIMIT

*----- SITE BREAKDOWN DELAYS -----*	
BREAKDOWN DURATION (MINS)	0
RANGE OF QUEUE DELAY - MIN (VEH-H) MAX	0.0
AV BREAKDOWNS PER DAY	0.00
AV QUEUE DELAY/DAY (VEH-H)	0.0
AV TOTAL DELAY/DAY (VEH-H)	0.0

*----- SITE ACCIDENT DELAYS -----*	
BREAKDOWN DURATION (MINS)	0
RANGE OF QUEUE DELAY - MIN (VEH-H) MAX	0
AV BREAKDOWNS PER DAY	0
AV QUEUE DELAY/DAY (VEH-H)	0
AV TOTAL DELAY/DAY (VEH-H)	0

AVERAGE ACCIDENT NUMBERS (PIA/DAY)	
MAIN ROUTE WITHOUT WORKS	0.0207
MAIN ROUTE WITH WORKS	0.0100
'DIVERSION'	0.0199
<small>PIA: Personal Injury Accidents</small>	
IMPACTS ON ROAD USERS	
ROAD USER COSTS PER DAY	\$212,835
CONGESTED HOURS PER DAY*	16

\*Delays Exceeding User-Specified Maximum

**IH 94: STH 181 TO USH 41 (MILWAUKEE COUNTY)  
CONTINUOUS (24 HOUR) 2 LANE CLOSURE  
NO DIVERSION ROUTE (MAX QUEUE METHOD)**

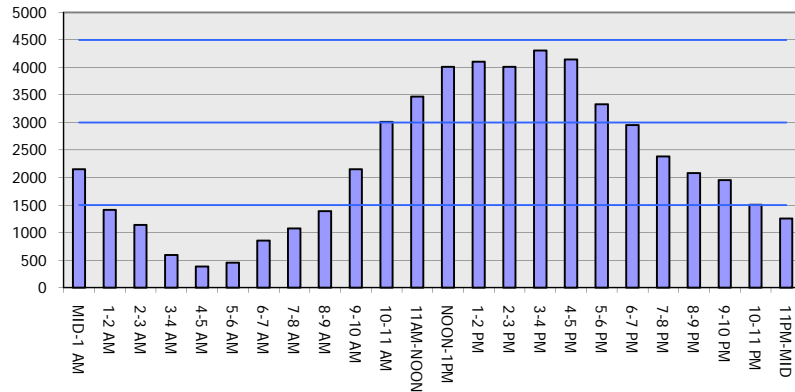
**AUGUST**

Analyzed for 2009  
Construction Season

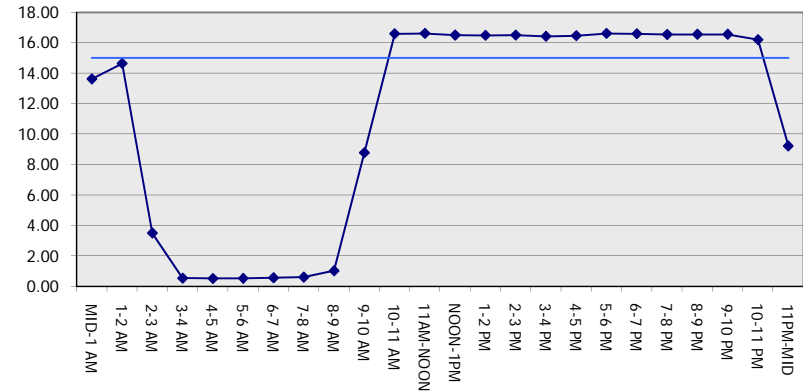
**GRAPHICAL REPRESENTATION OF TRAFFIC MODEL INPUT AND OUTPUT**

**SUNDAY WESTBOUND DIRECTION**

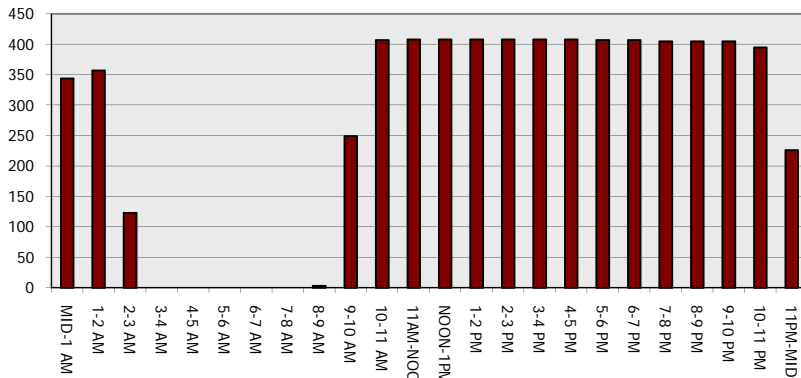
**Main Route - Traffic Demand (Vehicles Per Hour)**



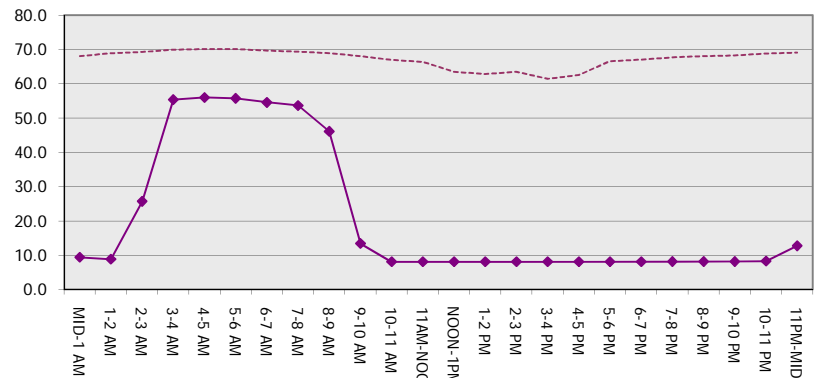
**Main Route Average Delay Per Vehicle (Minutes)**



**Main Route - Average Queue Length (Vehicles)**



**Main Route - Average Speed (MPH)**



<b>IH 94: STH 181 TO USH 41 (MILWAUKEE COUNTY)</b> <b>CONTINUOUS (24 HOUR) 2 LANE CLOSURE</b> <b>NO DIVERSION ROUTE (MAX QUEUE METHOD)</b>	<b>AUGUST</b>
	Analyzed for 2009 Construction Season

**SUMMARY OF TRAFFIC MODEL OUTPUT**

SUNDAY EASTBOUND DIRECTION

TIME OF DAY	FLOWS AND CAPACITY IN VEH/HR							AVERAGE SPEEDS IN MPH		
	MAIN ROUTE		SITE CAPA CITY	FLOW		AV.DEL PER VEH (MINS)	AVERAGE QUEUE (VEH)	MAIN ROUTE		SITE
	DEMAND FLOW	PCT HEAVY		MAIN ROUTE	'DIVER TED'			WITHOUT WORK ZONE	WITH WORK ZONE	
MID-1 AM	1231	0.0	1500	1231	0	0.75	0	69.2	50.9	37.5
1-2 AM	715	0.0	1500	715	0	0.56	0	69.9	55.0	42.7
2-3 AM	677	0.0	1500	677	0	0.55	0	69.9	55.1	42.8
3-4 AM	367	0.0	1500	367	0	0.52	0	70.2	56.0	44.0
4-5 AM	301	0.0	1500	301	0	0.51	0	70.2	56.2	44.3
5-6 AM	437	0.0	1500	437	0	0.53	0	70.2	55.8	43.7
6-7 AM	749	0.0	1500	749	0	0.56	0	69.8	54.9	42.6
7-8 AM	1159	0.0	1499	1159	0	0.68	0	69.3	52.1	39.1
8-9 AM	1542	0.0	1499	1542	0	1.72	25	68.8	37.8	32.1
9-10 AM	2450	0.0	1500	1873	577	13.70+	348	67.7	9.3	30.8
10-11 AM	3088	0.0	1499	1489	1599	16.58+	407	66.9	8.1	30.8
11AM-NOON	4096	0.0	1499	1500	2596	16.48+	408	62.8	8.1	30.8
NOON-1PM	3953	0.0	1500	1500	2453	16.51+	408	63.8	8.1	30.8
1-2 PM	3854	0.0	1500	1500	2354	16.54+	408	64.5	8.1	30.8
2-3 PM	3829	0.0	1500	1500	2329	16.55+	408	64.7	8.1	30.8
3-4 PM	3843	0.0	1500	1500	2343	16.54+	408	64.6	8.1	30.8
4-5 PM	3805	0.0	1500	1500	2305	16.55+	408	64.8	8.1	30.8
5-6 PM	3506	0.0	1499	1496	2010	16.59+	407	66.4	8.1	30.8
6-7 PM	3601	0.0	1499	1498	2102	16.60+	408	66.3	8.1	30.8
7-8 PM	2859	0.0	1499	1490	1369	16.58+	406	67.2	8.1	30.8
8-9 PM	2520	0.0	1499	1496	1024	16.55+	405	67.6	8.1	30.8
9-10 PM	2185	0.0	1499	1499	687	16.54+	405	68.0	8.1	30.8
10-11 PM	1586	0.0	1499	1442	144	16.32+	398	68.7	8.2	30.8
11PM-MID	1090	0.0	1499	1090	0	5.72	190	69.4	18.4	35.1

+ INDICATES QUEUEING EXCEEDS USER-SPECIFIED MAXIMUM LIMIT

*----- SITE BREAKDOWN DELAYS -----*	
BREAKDOWN DURATION (MINS)	0
RANGE OF QUEUE DELAY - MIN (VEH-H) MAX	0.0
AV BREAKDOWNS PER DAY	0.00
AV QUEUE DELAY/DAY (VEH-H)	0.0
AV TOTAL DELAY/DAY (VEH-H)	0.0

*----- SITE ACCIDENT DELAYS -----*	
BREAKDOWN DURATION (MINS)	0
RANGE OF QUEUE DELAY - MIN (VEH-H) MAX	0
AV BREAKDOWNS PER DAY	0
AV QUEUE DELAY/DAY (VEH-H)	0
AV TOTAL DELAY/DAY (VEH-H)	0

AVERAGE ACCIDENT NUMBERS (PIA/DAY)	
MAIN ROUTE WITHOUT WORKS	0.0204
MAIN ROUTE WITH WORKS	0.0093
'DIVERSION'	0.0211

PIA: Personal Injury Accidents

ECONOMIC IMPACT ON ROAD USERS	
ROAD USER COSTS PER DAY	\$208,233
CONGESTED HOURS PER DAY*	14

\*Delays Exceeding User-Specified Maximum

**IH 94: STH 181 TO USH 41 (MILWAUKEE COUNTY)  
 CONTINUOUS (24 HOUR) 2 LANE CLOSURE  
 NO DIVERSION ROUTE (MAX QUEUE METHOD)**

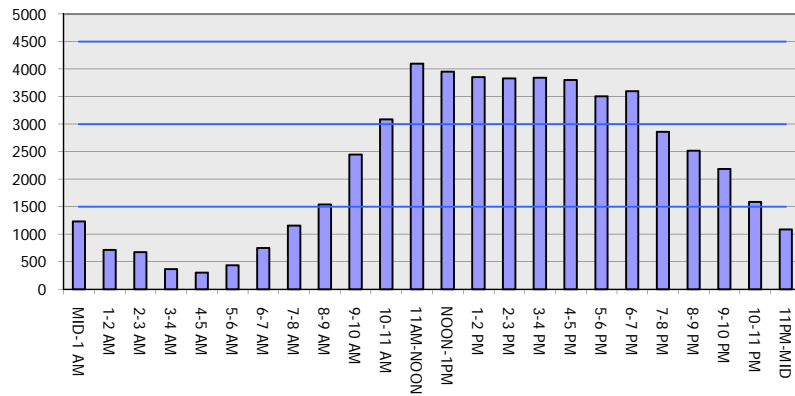
**AUGUST**

Analyzed for 2009  
 Construction Season

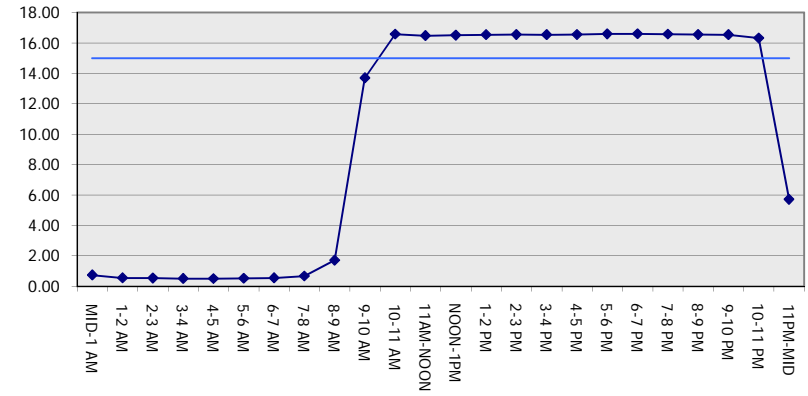
**GRAPHICAL REPRESENTATION OF TRAFFIC MODEL INPUT AND OUTPUT**

**SUNDAY EASTBOUND DIRECTION**

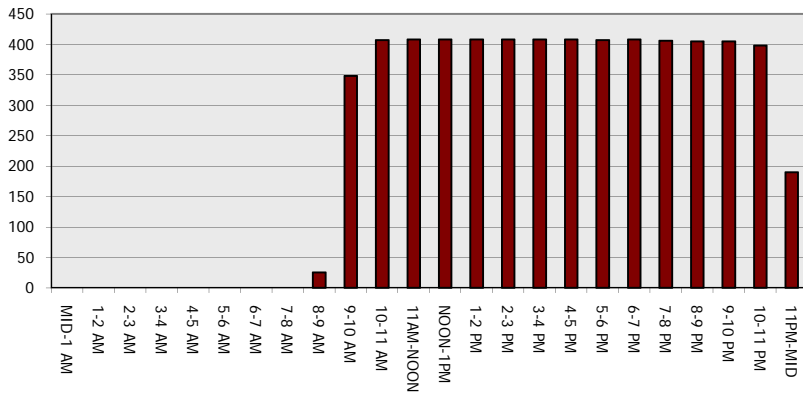
**Main Route - Traffic Demand (Vehicles Per Hour)**



**Main Route Average Delay Per Vehicle (Minutes)**



**Main Route - Average Queue Length (Vehicles)**



**Main Route - Average Speed (MPH)**

