

**IH 94: STH 181 TO USH 41 (MILWAUKEE COUNTY)
CONTINUOUS (24 HOUR) CLOSURE
NO DIVERSION ROUTE (MAX QUEUE METHOD)**

MAY
Analyzed for 2009
Construction Season

SUMMARY OF TRAFFIC MODEL OUTPUT
SUNDAY WESTBOUND DIRECTION

TIME OF DAY	FLOWS AND CAPACITY IN VEH/HR						AVERAGE SPEEDS IN MPH				
	MAIN ROUTE		SITE CAPA CITY	FLOW		AV.DEL PER VEH (MINS)	AVERAGE QUEUE (VEH)	MAIN ROUTE		SITE	
	DEMAND FLOW	PCT HEAVY		MAIN ROUTE	'DIVER TED'			WITHOUT WORK ZONE	WITH WORK ZONE		
MID-1 AM	1409	0.0	3000	1409	0	0.34	0	69.0	59.2	49.7	
1-2 AM	1072	0.0	3000	1072	0	0.35	0	69.4	59.4	49.7	
2-3 AM	1135	0.0	3000	1135	0	0.35	0	69.3	59.4	49.7	
3-4 AM	528	0.0	3000	528	0	0.36	0	70.0	59.7	49.7	
4-5 AM	409	0.0	3000	409	0	0.36	0	70.2	59.7	49.7	
5-6 AM	522	0.0	3000	522	0	0.36	0	70.1	59.7	49.7	
6-7 AM	888	0.0	3000	888	0	0.35	0	69.6	59.5	49.7	
7-8 AM	1130	0.0	3000	1130	0	0.35	0	69.3	59.4	49.7	
8-9 AM	1548	0.0	3000	1548	0	0.34	0	68.8	59.1	49.7	
9-10 AM	2313	0.0	2999	2313	0	0.36	0	67.9	58.0	48.4	
10-11 AM	2918	0.0	2999	2918	0	0.80	9	67.1	48.9	39.2	
11AM-NOON	3557	0.0	3000	3557	0	5.04	282	66.3	20.6	37.3	
NOON-1PM	3956	0.0	2999	3320	636	15.92+	849	63.8	10.9	37.3	
1-2 PM	3799	0.0	2999	2986	813	16.60+	880	64.9	10.7	37.3	
2-3 PM	3951	0.0	2999	2992	959	16.57+	881	63.8	10.6	37.3	
3-4 PM	4056	0.0	2999	2992	1064	16.56+	882	63.2	10.6	37.3	
4-5 PM	4369	0.0	2999	3016	1353	16.85+	905	61.0	10.6	37.3	
5-6 PM	3419	0.0	3000	2991	428	16.62+	876	66.5	10.7	37.3	
6-7 PM	2716	0.0	2999	2716	0	14.84+	780	67.4	11.2	37.3	
7-8 PM	2378	0.0	2999	2378	0	5.01	316	67.8	21.0	41.5	
8-9 PM	2010	0.0	3000	2010	0	0.33	0	68.2	58.9	49.7	
9-10 PM	1810	0.0	3000	1810	0	0.34	0	68.5	59.0	49.7	
10-11 PM	1398	0.0	3000	1398	0	0.34	0	69.0	59.2	49.7	
11PM-MID	906	0.0	3000	906	0	0.35	0	69.6	59.5	49.7	

+ INDICATES QUEUEING EXCEEDS USER-SPECIFIED MAXIMUM LIMIT

----- SITE BREAKDOWN DELAYS -----	
BREAKDOWN DURATION (MINS)	0
RANGE OF QUEUE DELAY - MIN (VEH-H) MAX	0.0
AV BREAKDOWNS PER DAY	0.00
AV QUEUE DELAY/DAY (VEH-H)	0.0
AV TOTAL DELAY/DAY (VEH-H)	0.0

----- SITE ACCIDENT DELAYS -----	
BREAKDOWN DURATION (MINS)	0
RANGE OF QUEUE DELAY - MIN (VEH-H) MAX	0
AV BREAKDOWNS PER DAY	0
AV QUEUE DELAY/DAY (VEH-H)	0
AV TOTAL DELAY/DAY (VEH-H)	0

AVERAGE ACCIDENT NUMBERS (PIA/DAY)	
MAIN ROUTE WITHOUT WORKS	0.0199
MAIN ROUTE WITH WORKS	0.0148
'DIVERSION'	0.0046
PIA: Personal Injury Accidents	
IMPACTS ON ROAD USERS	
ROAD USER COSTS PER DAY	\$132,187
CONGESTED HOURS PER DAY*	7

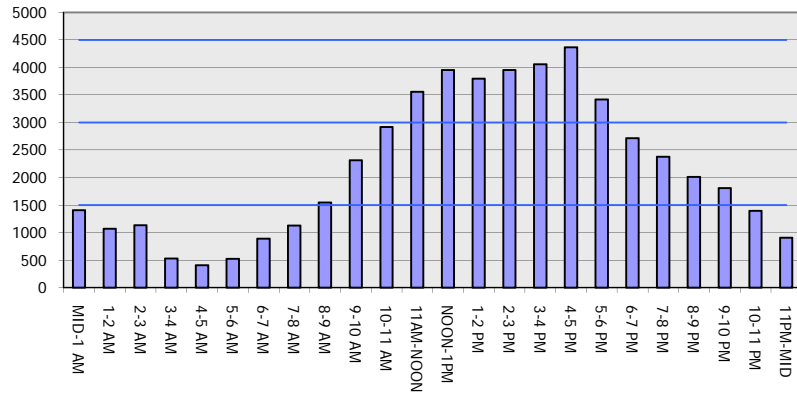
*Delays Exceeding User-Specified Maximum

**IH 94: STH 181 TO USH 41 (MILWAUKEE COUNTY)
CONTINUOUS (24 HOUR) CLOSURE
NO DIVERSION ROUTE (MAX QUEUE METHOD)**

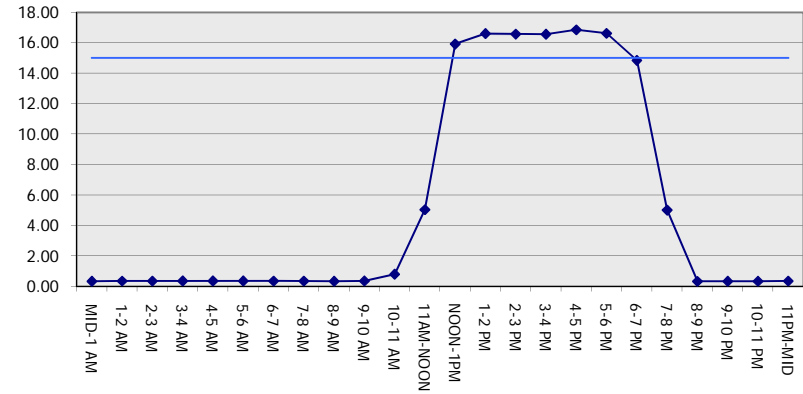
MAY
Analyzed for 2009
Construction Season

GRAPHICAL REPRESENTATION OF TRAFFIC MODEL INPUT AND OUTPUT
SUNDAY WESTBOUND DIRECTION

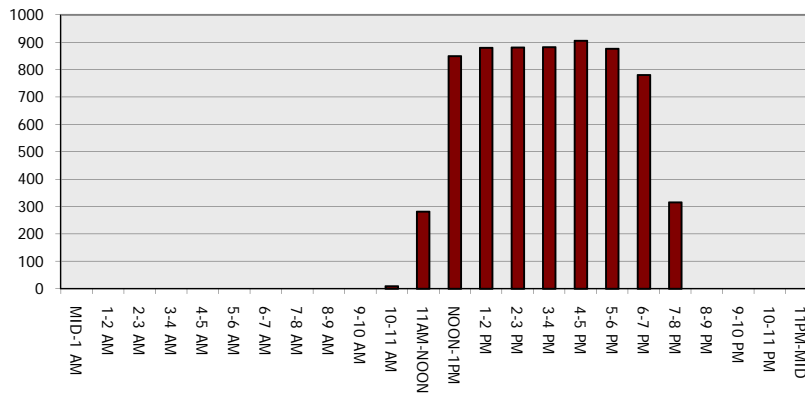
Main Route - Traffic Demand (Vehicles Per Hour)



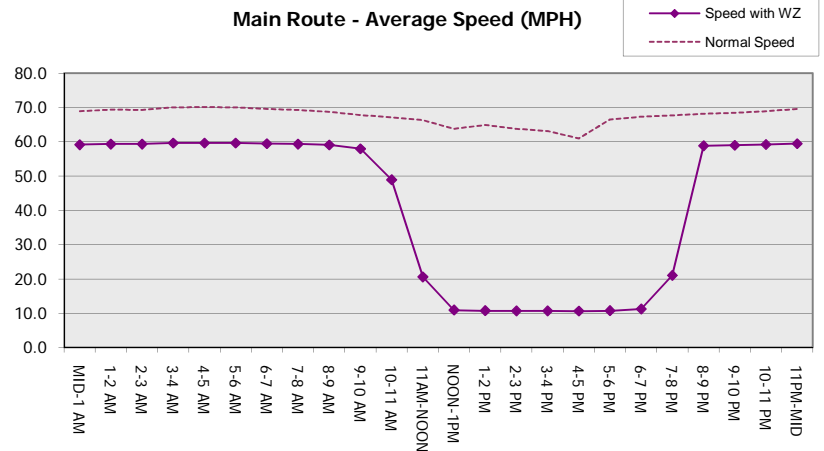
Main Route Average Delay Per Vehicle (Minutes)



Main Route - Average Queue Length (Vehicles)



Main Route - Average Speed (MPH)



IH 94: STH 181 TO USH 41 (MILWAUKEE COUNTY) CONTINUOUS (24 HOUR) CLOSURE NO DIVERSION ROUTE (MAX QUEUE METHOD)	MAY
	Analyzed for 2009 Construction Season

SUMMARY OF TRAFFIC MODEL OUTPUT

SUNDAY EASTBOUND DIRECTION

TIME OF DAY	FLOWS AND CAPACITY IN VEH/HR						AVERAGE SPEEDS IN MPH			
	MAIN ROUTE		SITE CAPA CITY	FLOW		AV.DEL PER VEH (MINS)	AVERAGE QUEUE (VEH)	MAIN ROUTE		SITE
	DEMAND FLOW	PCT HEAVY		MAIN ROUTE	'DIVER TED'			WITHOUT WORK ZONE	WITH WORK ZONE	
MID-1 AM	1153	0.0	3000	1153	0	0.35	0	69.3	59.4	49.7
1-2 AM	692	0.0	3000	692	0	0.36	0	69.9	59.6	49.7
2-3 AM	547	0.0	3000	547	0	0.36	0	70.0	59.7	49.7
3-4 AM	345	0.0	3000	345	0	0.36	0	70.2	59.7	49.7
4-5 AM	264	0.0	3000	264	0	0.36	0	70.2	59.7	49.7
5-6 AM	413	0.0	3000	413	0	0.36	0	70.2	59.7	49.7
6-7 AM	789	0.0	3000	789	0	0.35	0	69.7	59.6	49.7
7-8 AM	1160	0.0	3000	1160	0	0.35	0	69.3	59.4	49.7
8-9 AM	1823	0.0	3000	1823	0	0.34	0	68.5	59.0	49.7
9-10 AM	2431	0.0	2999	2431	0	0.39	0	67.7	57.1	47.2
10-11 AM	3094	0.0	2999	3094	0	1.21	35	66.9	42.8	38.0
11AM-NOON	3980	0.0	3000	3804	176	10.36+	590	63.7	13.4	37.3
NOON-1PM	3644	0.0	3000	2970	674	16.63+	879	66.0	10.7	37.3
1-2 PM	3830	0.0	2999	2984	847	16.59+	880	64.7	10.7	37.3
2-3 PM	3753	0.0	2999	2991	763	16.61+	879	65.2	10.7	37.3
3-4 PM	3733	0.0	2999	2995	738	16.61+	879	65.3	10.7	37.3
4-5 PM	3700	0.0	2999	2997	703	16.61+	879	65.6	10.7	37.3
5-6 PM	3549	0.0	3000	2998	552	16.63+	877	66.3	10.7	37.3
6-7 PM	3496	0.0	2999	2998	497	16.62+	877	66.4	10.7	37.3
7-8 PM	3102	0.0	3000	2988	113	16.57+	873	66.9	10.7	37.3
8-9 PM	2649	0.0	2999	2649	0	13.61+	714	67.4	11.6	37.3
9-10 PM	2377	0.0	2999	2377	0	3.26	238	67.8	27.1	43.1
10-11 PM	1819	0.0	3000	1819	0	0.34	0	68.5	59.0	49.7
11PM-MID	1036	0.0	3000	1036	0	0.35	0	69.4	59.4	49.7

+ INDICATES QUEUEING EXCEEDS USER-SPECIFIED MAXIMUM LIMIT

----- SITE BREAKDOWN DELAYS -----	
BREAKDOWN DURATION (MINS)	0
RANGE OF QUEUE DELAY - MIN (VEH-H) MAX	0.0
AV BREAKDOWNS PER DAY	0.00
AV QUEUE DELAY/DAY (VEH-H)	0.0
AV TOTAL DELAY/DAY (VEH-H)	0.0

----- SITE ACCIDENT DELAYS -----	
BREAKDOWN DURATION (MINS)	0
RANGE OF QUEUE DELAY - MIN (VEH-H) MAX	0
AV BREAKDOWNS PER DAY	0
AV QUEUE DELAY/DAY (VEH-H)	0
AV TOTAL DELAY/DAY (VEH-H)	0

AVERAGE ACCIDENT NUMBERS (PIA/DAY)	
MAIN ROUTE WITHOUT WORKS	0.0204
MAIN ROUTE WITH WORKS	0.0153
'DIVERSION'	0.0045

PIA: Personal Injury Accidents

ECONOMIC IMPACT ON ROAD USERS	
ROAD USER COSTS PER DAY	\$161,642
CONGESTED HOURS PER DAY*	10

*Delays Exceeding User-Specified Maximum

**IH 94: STH 181 TO USH 41 (MILWAUKEE COUNTY)
CONTINUOUS (24 HOUR) CLOSURE
NO DIVERSION ROUTE (MAX QUEUE METHOD)**

MAY
Analyzed for 2009
Construction Season

GRAPHICAL REPRESENTATION OF TRAFFIC MODEL INPUT AND OUTPUT
SUNDAY EASTBOUND DIRECTION

