

<b>IH 94: STH 20 TO STH 50 (RACINE AND KENOSHA COUNTIES)                  CONTINUOUS (24 HOUR) CLOSURE                  NO DIVERSION ROUTE (MAX QUEUE METHOD)</b>	<b>OCTOBER</b>
	Analyzed for 2009 Construction Season

**SUMMARY OF TRAFFIC MODEL OUTPUT**

FRIDAY WESTBOUND DIRECTION

TIME OF DAY	FLOWS AND CAPACITY IN VEH/HR						AVERAGE SPEEDS IN MPH			
	MAIN ROUTE		SITE CAPA CITY	FLOW		AV.DEL PER VEH (MINS)	AVERAGE QUEUE (VEH)	MAIN ROUTE		SITE
	DEMAND FLOW	PCT HEAVY		MAIN ROUTE	'DIVER TED'			WITHOUT WORK ZONE	WITH WORK ZONE	
MID-1 AM	522	0.0	3000	522	0	0.36	0	70.2	67.6	49.7
1-2 AM	407	0.0	3000	407	0	0.36	0	70.2	67.6	49.7
2-3 AM	400	0.0	3000	400	0	0.36	0	70.2	67.6	49.7
3-4 AM	451	0.0	3000	451	0	0.36	0	70.2	67.6	49.7
4-5 AM	759	0.0	3000	759	0	0.36	0	70.2	67.6	49.7
5-6 AM	1358	0.0	3000	1358	0	0.36	0	70.2	67.6	49.7
6-7 AM	1963	0.0	3000	1963	0	0.35	0	69.6	67.1	49.7
7-8 AM	2203	0.0	3000	2203	0	0.35	0	69.3	66.8	49.7
8-9 AM	2150	0.0	3000	2150	0	0.35	0	69.4	66.9	49.7
9-10 AM	2271	0.0	3000	2271	0	0.35	0	69.2	66.8	49.7
10-11 AM	2429	0.0	3000	2429	0	0.39	0	69.0	66.3	47.9
11AM-NOON	2442	0.0	3000	2442	0	0.40	0	69.0	66.2	47.6
NOON-1PM	2641	0.0	3000	2641	0	0.53	0	68.7	65.1	43.1
1-2 PM	2774	0.0	3000	2774	0	0.62	0	68.6	64.5	40.6
2-3 PM	2874	0.0	2999	2874	0	0.68	0	68.5	63.9	38.9
3-4 PM	2971	0.0	2999	2971	0	0.76	1	68.4	63.3	37.4
4-5 PM	3181	0.0	3000	3181	0	2.25	85	68.1	55.1	36.9
5-6 PM	3255	0.0	3000	3255	0	6.60	327	68.0	40.3	36.9
6-7 PM	2703	0.0	2999	2703	0	6.63	332	68.7	40.5	37.9
7-8 PM	1951	0.0	3000	1951	0	0.54	11	69.6	65.8	49.7
8-9 PM	1409	0.0	3000	1409	0	0.36	0	70.2	67.6	49.7
9-10 PM	1272	0.0	3000	1272	0	0.36	0	70.2	67.6	49.7
10-11 PM	1083	0.0	3000	1083	0	0.36	0	70.2	67.6	49.7
11PM-MID	830	0.0	3000	830	0	0.36	0	70.2	67.6	49.7

*----- SITE BREAKDOWN DELAYS -----*	
BREAKDOWN DURATION (MINS)	0
RANGE OF QUEUE DELAY - MIN (VEH-H) MAX	0.0
AV BREAKDOWNS PER DAY	0.00
AV QUEUE DELAY/DAY (VEH-H)	0.0
AV TOTAL DELAY/DAY (VEH-H)	0.0

*----- SITE ACCIDENT DELAYS -----*	
BREAKDOWN DURATION (MINS)	0
RANGE OF QUEUE DELAY - MIN (VEH-H) MAX	0
AV BREAKDOWNS PER DAY	0
AV QUEUE DELAY/DAY (VEH-H)	0
AV TOTAL DELAY/DAY (VEH-H)	0

AVERAGE ACCIDENT NUMBERS (PIA/DAY)	
MAIN ROUTE WITHOUT WORKS	0.0768
MAIN ROUTE WITH WORKS	0.0739
'DIVERSION'	0.0000
PIA: Personal Injury Accidents	
IMPACTS ON ROAD USERS	
ROAD USER COSTS PER DAY	\$13,782
CONGESTED HOURS PER DAY*	0

\*Delays Exceeding User-Specified Maximum

**IH 94: STH 20 TO STH 50 (RACINE AND KENOSHA COUNTIES)  
CONTINUOUS (24 HOUR) CLOSURE  
NO DIVERSION ROUTE (MAX QUEUE METHOD)**

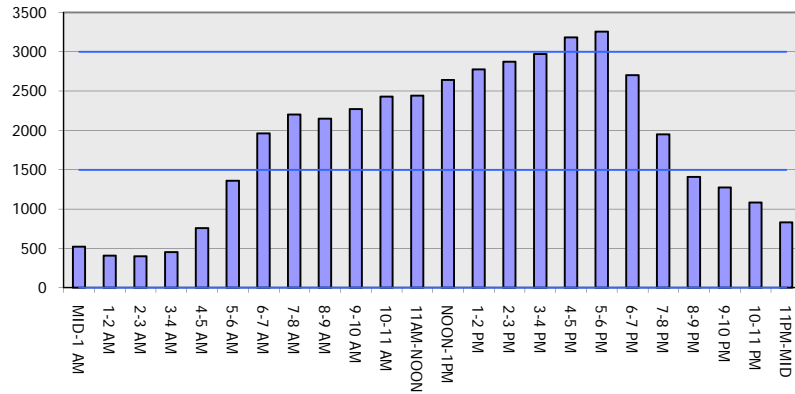
**OCTOBER**

Analyzed for 2009  
Construction Season

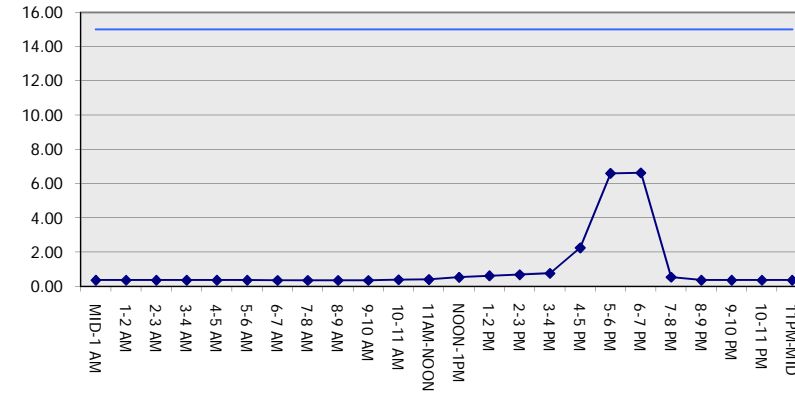
**GRAPHICAL REPRESENTATION OF TRAFFIC MODEL INPUT AND OUTPUT**

**FRIDAY WESTBOUND DIRECTION**

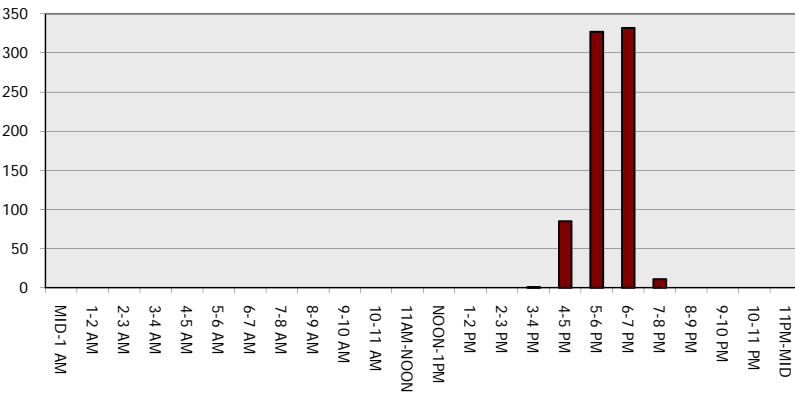
**Main Route - Traffic Demand (Vehicles Per Hour)**



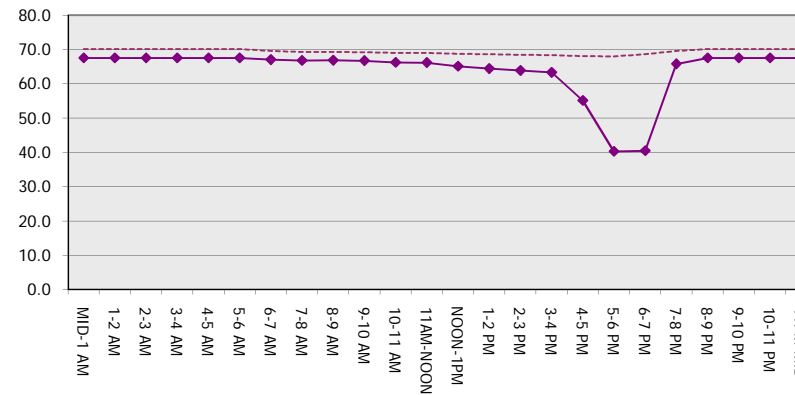
**Main Route Average Delay Per Vehicle (Minutes)**



**Main Route - Average Queue Length (Vehicles)**



**Main Route - Average Speed (MPH)**



<b>IH 94: STH 20 TO STH 50 (RACINE AND KENOSHA COUNTIES)                  CONTINUOUS (24 HOUR) CLOSURE                  NO DIVERSION ROUTE (MAX QUEUE METHOD)</b>	<b>OCTOBER</b>
	Analyzed for 2009 Construction Season

**SUMMARY OF TRAFFIC MODEL OUTPUT**

FRIDAY EASTBOUND DIRECTION

TIME OF DAY	FLOWS AND CAPACITY IN VEH/HR							AVERAGE SPEEDS IN MPH		
	MAIN ROUTE		SITE CAPA CITY	FLOW		AV.DEL PER VEH (MINS)	AVERAGE QUEUE (VEH)	MAIN ROUTE		SITE
	DEMAND FLOW	PCT HEAVY		MAIN ROUTE	'DIVER TED'			WITHOUT WORK ZONE	WITH WORK ZONE	
MID-1 AM	568	0.0	3000	568	0	0.36	0	70.2	67.6	49.7
1-2 AM	456	0.0	3000	456	0	0.36	0	70.2	67.6	49.7
2-3 AM	398	0.0	3000	398	0	0.36	0	70.2	67.6	49.7
3-4 AM	457	0.0	3000	457	0	0.36	0	70.2	67.6	49.7
4-5 AM	628	0.0	3000	628	0	0.36	0	70.2	67.6	49.7
5-6 AM	1311	0.0	3000	1311	0	0.36	0	70.2	67.6	49.7
6-7 AM	2078	0.0	3000	2078	0	0.35	0	69.4	66.9	49.7
7-8 AM	2249	0.0	3000	2249	0	0.35	0	69.2	66.8	49.7
8-9 AM	2035	0.0	3000	2035	0	0.35	0	69.5	67.0	49.7
9-10 AM	2131	0.0	3000	2131	0	0.35	0	69.4	66.9	49.7
10-11 AM	2444	0.0	3000	2444	0	0.40	0	69.0	66.2	47.6
11AM-NOON	2550	0.0	3000	2550	0	0.47	0	68.9	65.6	45.1
NOON-1PM	2577	0.0	3000	2577	0	0.49	0	68.8	65.5	44.5
1-2 PM	2789	0.0	2999	2789	0	0.62	0	68.6	64.3	40.4
2-3 PM	3183	0.0	2999	3183	0	2.11	78	68.1	55.8	36.9
3-4 PM	3206	0.0	2999	3206	0	5.84	283	68.1	42.4	36.9
4-5 PM	3256	0.0	3000	3256	0	<b>10.09</b>	519	68.0	33.2	36.9
5-6 PM	3144	0.0	2999	3144	0	<b>14.02+</b>	731	68.1	27.7	36.9
6-7 PM	2807	0.0	2999	2807	0	<b>13.68+</b>	711	68.6	28.1	36.9
7-8 PM	2537	0.0	2999	2537	0	7.34	381	68.9	38.8	38.4
8-9 PM	2265	0.0	3000	2265	0	0.60	14	69.2	65.1	48.9
9-10 PM	1681	0.0	3000	1681	0	0.36	0	69.9	67.4	49.7
10-11 PM	1254	0.0	3000	1254	0	0.36	0	70.2	67.6	49.7
11PM-MID	973	0.0	3000	973	0	0.36	0	70.2	67.6	49.7

+ INDICATES QUEUEING EXCEEDS USER-SPECIFIED MAXIMUM LIMIT

*----- SITE BREAKDOWN DELAYS -----*	
BREAKDOWN DURATION (MINS)	0
RANGE OF QUEUE DELAY - MIN (VEH-H) MAX	0.0
AV BREAKDOWNS PER DAY	0.00
AV QUEUE DELAY/DAY (VEH-H)	0.0
AV TOTAL DELAY/DAY (VEH-H)	0.0

*----- SITE ACCIDENT DELAYS -----*	
BREAKDOWN DURATION (MINS)	0
RANGE OF QUEUE DELAY - MIN (VEH-H) MAX	0
AV BREAKDOWNS PER DAY	0
AV QUEUE DELAY/DAY (VEH-H)	0
AV TOTAL DELAY/DAY (VEH-H)	0

AVERAGE ACCIDENT NUMBERS (PIA/DAY)	
MAIN ROUTE WITHOUT WORKS	0.0815
MAIN ROUTE WITH WORKS	0.0784
'DIVERSION'	0.0000

PIA: Personal Injury Accidents

ECONOMIC IMPACT ON ROAD USERS	
ROAD USER COSTS PER DAY	\$37,596
CONGESTED HOURS PER DAY*	2

\*Delays Exceeding User-Specified Maximum

**IH 94: STH 20 TO STH 50 (RACINE AND KENOSHA COUNTIES)  
 CONTINUOUS (24 HOUR) CLOSURE  
 NO DIVERSION ROUTE (MAX QUEUE METHOD)**

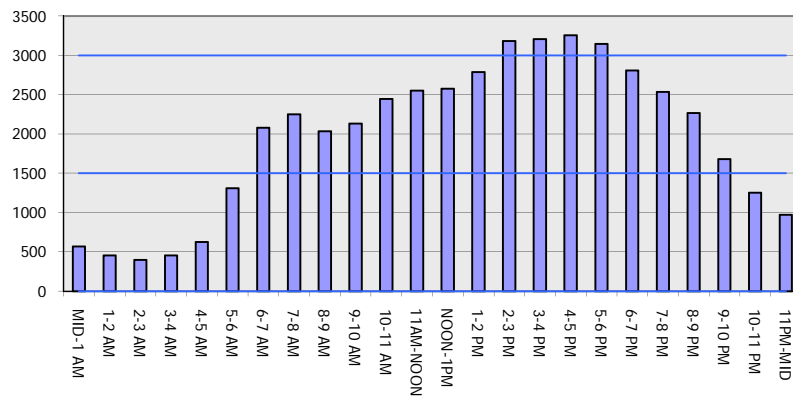
**OCTOBER**

Analyzed for 2009  
 Construction Season

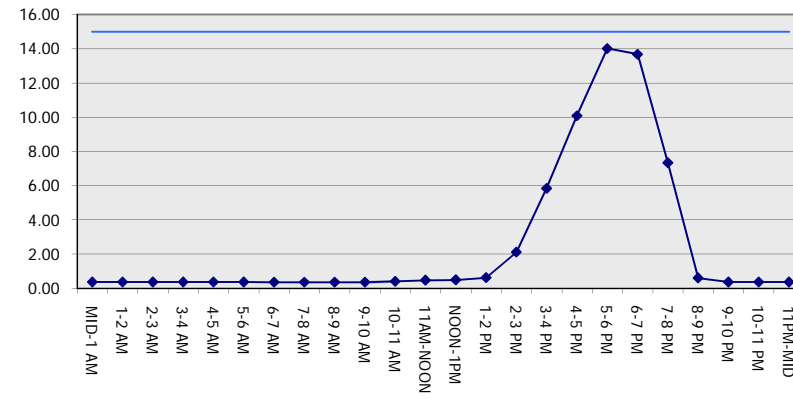
**GRAPHICAL REPRESENTATION OF TRAFFIC MODEL INPUT AND OUTPUT**

**FRIDAY EASTBOUND DIRECTION**

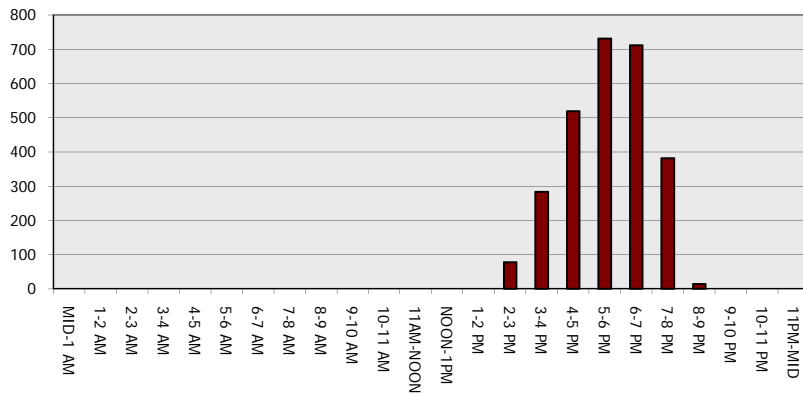
**Main Route - Traffic Demand (Vehicles Per Hour)**



**Main Route Average Delay Per Vehicle (Minutes)**



**Main Route - Average Queue Length (Vehicles)**



**Main Route - Average Speed (MPH)**

