

**IH 94: STH 50 TO STATE LINE (KENOSHA COUNTY)
CONTINUOUS (24 HOUR) CLOSURE
NO DIVERSION ROUTE (MAX QUEUE METHOD)**

OCTOBER

Analyzed for 2009
Construction Season

SUMMARY OF TRAFFIC MODEL OUTPUT

SATURDAY WESTBOUND DIRECTION

TIME OF DAY	FLOWS AND CAPACITY IN VEH/HR						AVERAGE SPEEDS IN MPH			
	MAIN ROUTE		SITE CAPA CITY	FLOW		AV.DEL PER VEH (MINS)	AVERAGE QUEUE (VEH)	MAIN ROUTE		SITE
	DEMAND FLOW	PCT HEAVY		MAIN ROUTE	'DIVER TED'			WITHOUT WORK ZONE	WITH WORK ZONE	
MID-1 AM	737	0.0	3000	737	0	0.36	0	70.2	64.8	49.7
1-2 AM	479	0.0	3000	479	0	0.36	0	70.2	64.8	49.7
2-3 AM	366	0.0	3000	366	0	0.36	0	70.2	64.8	49.7
3-4 AM	330	0.0	3000	330	0	0.36	0	70.2	64.8	49.7
4-5 AM	413	0.0	3000	413	0	0.36	0	70.2	64.8	49.7
5-6 AM	674	0.0	3000	674	0	0.36	0	70.2	64.8	49.7
6-7 AM	1009	0.0	3000	1009	0	0.36	0	70.2	64.8	49.7
7-8 AM	1398	0.0	3000	1398	0	0.36	0	70.2	64.8	49.7
8-9 AM	1937	0.0	3000	1937	0	0.35	0	69.6	64.5	49.7
9-10 AM	2471	0.0	3000	2471	0	0.42	0	69.0	63.0	46.9
10-11 AM	2853	0.0	2999	2853	0	0.67	0	68.5	59.6	39.2
11AM-NOON	3093	0.0	2999	3093	0	1.44	39	68.2	51.6	36.9
NOON-1PM	3086	0.0	2999	3086	0	3.27	139	68.2	39.4	36.9
1-2 PM	2998	0.0	2999	2998	0	3.98	177	68.3	36.1	36.9
2-3 PM	3123	0.0	3000	3123	0	5.06	238	68.2	32.0	36.9
3-4 PM	2991	0.0	2999	2991	0	6.21	299	68.3	28.6	36.9
4-5 PM	3006	0.0	3000	3006	0	6.17	297	68.3	28.8	36.9
5-6 PM	2889	0.0	2999	2889	0	5.42	257	68.4	30.9	36.9
6-7 PM	2500	0.0	3000	2500	0	1.11	43	68.9	55.1	44.8
7-8 PM	2089	0.0	3000	2089	0	0.35	0	69.4	64.3	49.7
8-9 PM	1865	0.0	3000	1865	0	0.35	0	69.7	64.5	49.7
9-10 PM	1654	0.0	3000	1654	0	0.36	0	70.0	64.7	49.7
10-11 PM	1585	0.0	3000	1585	0	0.36	0	70.0	64.8	49.7
11PM-MID	1238	0.0	3000	1238	0	0.36	0	70.2	64.8	49.7

----- SITE BREAKDOWN DELAYS -----

BREAKDOWN DURATION (MINS)	0
RANGE OF QUEUE DELAY - MIN (VEH-H) MAX	0.0
AV BREAKDOWNS PER DAY	0.00
AV QUEUE DELAY/DAY (VEH-H)	0.0
AV TOTAL DELAY/DAY (VEH-H)	0.0

----- SITE ACCIDENT DELAYS -----

BREAKDOWN DURATION (MINS)	0
RANGE OF QUEUE DELAY - MIN (VEH-H) MAX	0
AV BREAKDOWNS PER DAY	0
AV QUEUE DELAY/DAY (VEH-H)	0
AV TOTAL DELAY/DAY (VEH-H)	0

AVERAGE ACCIDENT NUMBERS (PIA/DAY)

MAIN ROUTE WITHOUT WORKS	0.0364
MAIN ROUTE WITH WORKS	0.0334
'DIVERSION'	0.0000

PIA: Personal Injury Accidents

IMPACTS ON ROAD USERS

ROAD USER COSTS PER DAY	\$28,689
CONGESTED HOURS PER DAY*	0

*Delays Exceeding User-Specified Maximum

**IH 94: STH 50 TO STATE LINE (KENOSHA COUNTY)
CONTINUOUS (24 HOUR) CLOSURE
NO DIVERSION ROUTE (MAX QUEUE METHOD)**

OCTOBER

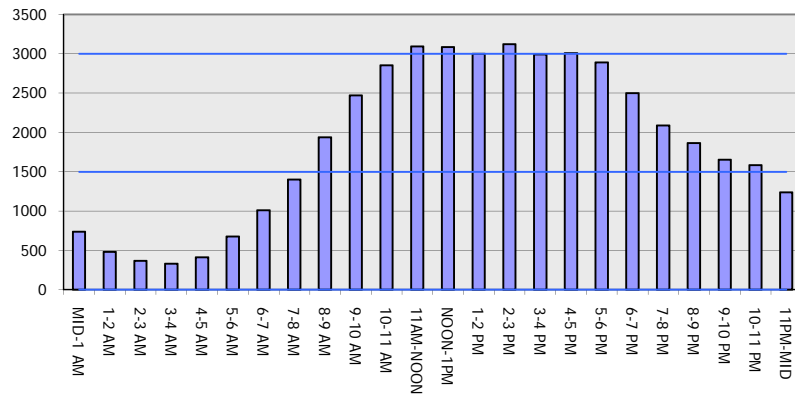
Analyzed for 2009
Construction Season

GRAPHICAL REPRESENTATION OF TRAFFIC MODEL INPUT AND OUTPUT

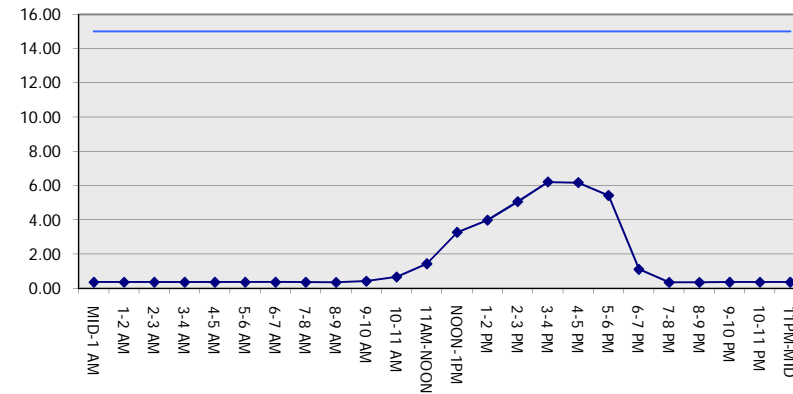
SATURDAY

WESTBOUND DIRECTION

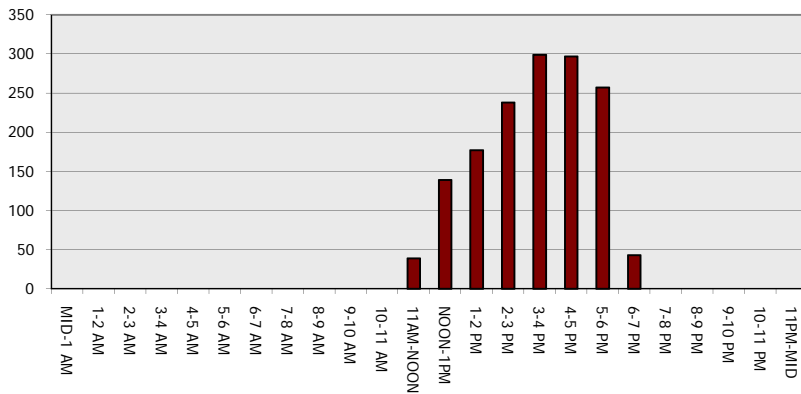
Main Route - Traffic Demand (Vehicles Per Hour)



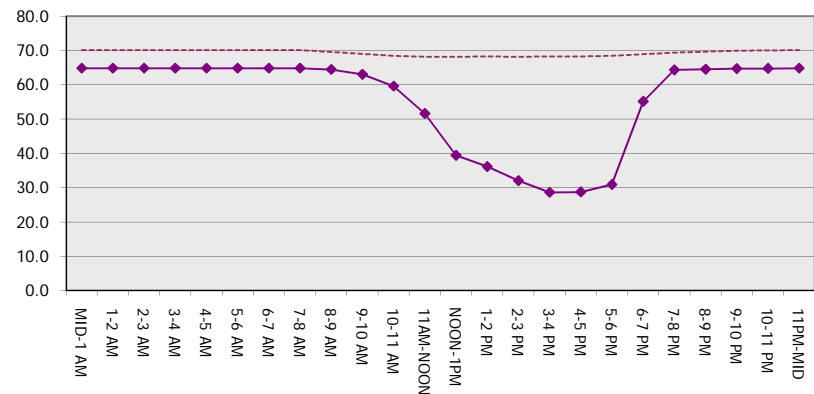
Main Route Average Delay Per Vehicle (Minutes)



Main Route - Average Queue Length (Vehicles)



Main Route - Average Speed (MPH)



IH 94: STH 50 TO STATE LINE (KENOSHA COUNTY) CONTINUOUS (24 HOUR) CLOSURE NO DIVERSION ROUTE (MAX QUEUE METHOD)	OCTOBER
	Analyzed for 2009 Construction Season

SUMMARY OF TRAFFIC MODEL OUTPUT

SATURDAY EASTBOUND DIRECTION

TIME OF DAY	FLOWS AND CAPACITY IN VEH/HR							AVERAGE SPEEDS IN MPH		
	MAIN ROUTE		SITE CAPA CITY	FLOW		AV.DEL PER VEH (MINS)	AVERAGE QUEUE (VEH)	MAIN ROUTE		SITE
	DEMAND FLOW	PCT HEAVY		MAIN ROUTE	'DIVER TED'			WITHOUT WORK ZONE	WITH WORK ZONE	
MID-1 AM	532	0.0	3000	532	0	0.36	0	70.2	64.8	49.7
1-2 AM	413	0.0	3000	413	0	0.36	0	70.2	64.8	49.7
2-3 AM	366	0.0	3000	366	0	0.36	0	70.2	64.8	49.7
3-4 AM	386	0.0	3000	386	0	0.36	0	70.2	64.8	49.7
4-5 AM	475	0.0	3000	475	0	0.36	0	70.2	64.8	49.7
5-6 AM	754	0.0	3000	754	0	0.36	0	70.2	64.8	49.7
6-7 AM	1038	0.0	3000	1038	0	0.36	0	70.2	64.8	49.7
7-8 AM	1391	0.0	3000	1391	0	0.36	0	70.2	64.8	49.7
8-9 AM	1849	0.0	3000	1849	0	0.35	0	69.7	64.5	49.7
9-10 AM	2562	0.0	3000	2562	0	0.48	0	68.9	62.2	44.8
10-11 AM	2828	0.0	3000	2828	0	0.65	0	68.5	59.8	39.6
11AM-NOON	2902	0.0	3000	2902	0	0.70	0	68.4	59.2	38.4
NOON-1PM	2882	0.0	3000	2882	0	0.69	0	68.4	59.4	38.7
1-2 PM	2804	0.0	3000	2804	0	0.63	0	68.6	60.0	40.1
2-3 PM	2897	0.0	3000	2897	0	0.70	0	68.4	59.2	38.5
3-4 PM	2907	0.0	3000	2907	0	0.70	0	68.4	59.1	38.3
4-5 PM	2836	0.0	3000	2836	0	0.66	0	68.5	59.7	39.5
5-6 PM	2655	0.0	3000	2655	0	0.54	0	68.7	61.4	42.8
6-7 PM	2173	0.0	3000	2173	0	0.35	0	69.4	64.3	49.7
7-8 PM	1782	0.0	3000	1782	0	0.35	0	69.8	64.6	49.7
8-9 PM	1481	0.0	3000	1481	0	0.36	0	70.2	64.8	49.7
9-10 PM	1332	0.0	3000	1332	0	0.36	0	70.2	64.8	49.7
10-11 PM	1109	0.0	3000	1109	0	0.36	0	70.2	64.8	49.7
11PM-MID	874	0.0	3000	874	0	0.36	0	70.2	64.8	49.7

----- SITE BREAKDOWN DELAYS -----	
BREAKDOWN DURATION (MINS)	0
RANGE OF QUEUE DELAY - MIN (VEH-H) MAX	0.0
AV BREAKDOWNS PER DAY	0.00
AV QUEUE DELAY/DAY (VEH-H)	0.0
AV TOTAL DELAY/DAY (VEH-H)	0.0

----- SITE ACCIDENT DELAYS -----	
BREAKDOWN DURATION (MINS)	0
RANGE OF QUEUE DELAY - MIN (VEH-H) MAX	0
AV BREAKDOWNS PER DAY	0
AV QUEUE DELAY/DAY (VEH-H)	0
AV TOTAL DELAY/DAY (VEH-H)	0

AVERAGE ACCIDENT NUMBERS (PIA/DAY)	
MAIN ROUTE WITHOUT WORKS	0.0335
MAIN ROUTE WITH WORKS	0.0307
'DIVERSION'	0.0000

PIA: Personal Injury Accidents

ECONOMIC IMPACT ON ROAD USERS	
ROAD USER COSTS PER DAY	\$5,907
CONGESTED HOURS PER DAY*	0

*Delays Exceeding User-Specified Maximum

**IH 94: STH 50 TO STATE LINE (KENOSHA COUNTY)
CONTINUOUS (24 HOUR) CLOSURE
NO DIVERSION ROUTE (MAX QUEUE METHOD)**

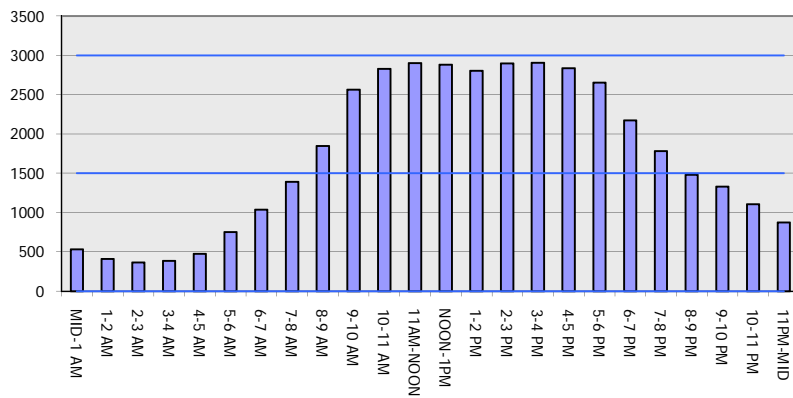
OCTOBER

Analyzed for 2009
Construction Season

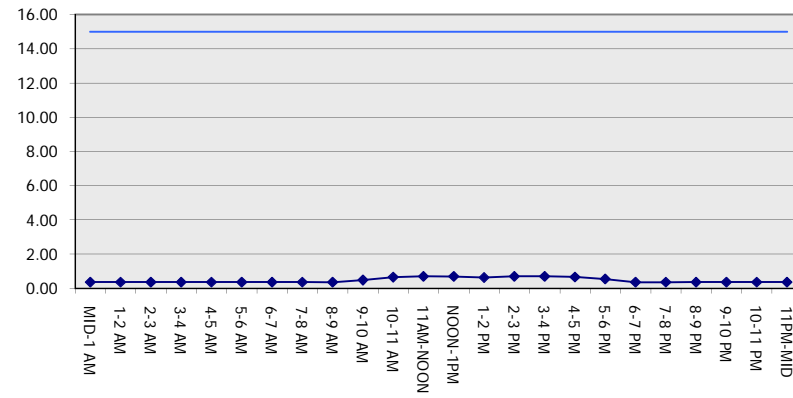
GRAPHICAL REPRESENTATION OF TRAFFIC MODEL INPUT AND OUTPUT

SATURDAY EASTBOUND DIRECTION

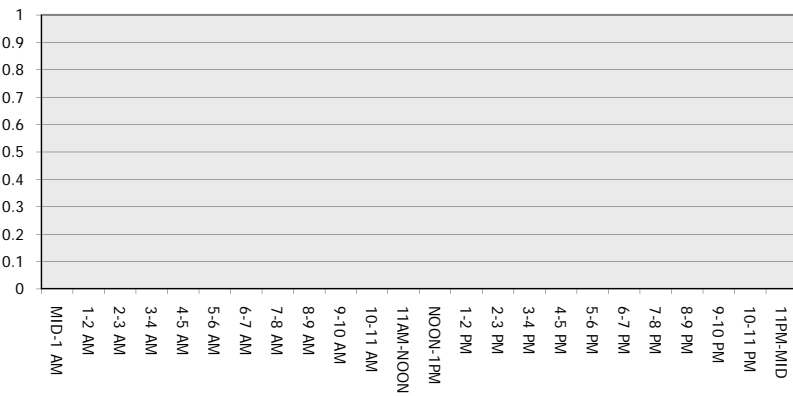
Main Route - Traffic Demand (Vehicles Per Hour)



Main Route Average Delay Per Vehicle (Minutes)



Main Route - Average Queue Length (Vehicles)



Main Route - Average Speed (MPH)

