

<b>IH 94: STH 35 N TO CARMICHAEL RD (ST CROIX COUNTY)</b> <b>NIGHTTIME CLOSURE</b> <b>DIVERSION ROUTE: STH 35 - COULEE RD - CARMICHAEL RD</b>	<b>AUGUST</b>
	Analyzed for 2009 Construction Season

**SUMMARY OF TRAFFIC MODEL OUTPUT**

**FRIDAY WESTBOUND DIRECTION**

TIME OF DAY	FLOWS AND CAPACITY IN VEH/HR						AVERAGE SPEEDS IN MPH								
	MAIN ROUTE		ALTERNATE ROUTE		SITE CAPA CITY	FLOW MAIN ROUTE	FLOW DIVER -TING	TOTAL DIVN FLOW	AV.DEL PER VEH (MINS)	AVERAGE QUEUE (VEH)	MAIN ROUTE		ALTERNATE ROUTE		
	DEMAND FLOW	PCT HEAVY	NORMAL FLOW	PCT HEAVY							WITHOUT WORK ZN	WITH WORK ZN	SITE	WITHOUT WORK ZN	WITH WORK ZN
MID-1 AM	639	0.0	75	0.0	3000	639	0	75	0.36	0	69.9	55.5	49.7	19.3	19.3
1-2 AM	532	0.0	63	0.0	3000	532	0	63	0.36	0	70.0	55.5	49.7	19.4	19.4
2-3 AM	554	0.0	65	0.0	3000	554	0	65	0.36	0	70.0	55.5	49.7	19.4	19.4
3-4 AM	643	0.0	75	0.0	3000	643	0	75	0.36	0	69.9	55.5	49.7	19.3	19.3
4-5 AM	1072	0.0	127	0.0	3000	1072	0	127	0.35	0	69.4	55.4	49.7	18.9	18.9
5-6 AM	1706	0.0	201	0.0	OFF	1706	0	201	0.00	0	68.6	68.6	68.6	18.3	18.3
6-7 AM	1991	0.0	234	0.0	OFF	1991	0	234	0.00	0	68.2	68.2	68.2	18.0	18.0
7-8 AM	2127	0.0	250	0.0	OFF	2127	0	250	0.00	0	68.1	68.1	68.1	17.9	17.9
8-9 AM	2072	0.0	244	0.0	OFF	2072	0	244	0.00	0	68.2	68.2	68.2	17.9	17.9
9-10 AM	2248	0.0	265	0.0	OFF	2248	0	265	0.00	0	67.9	67.9	67.9	17.8	17.8
10-11 AM	2619	0.0	309	0.0	OFF	2619	0	309	0.00	0	67.5	67.5	67.5	17.5	17.5
11A-NOON	2882	0.0	339	0.0	OFF	2882	0	339	0.00	0	67.1	67.1	67.1	17.2	17.2
NOON-1PM	2996	0.0	353	0.0	OFF	2996	0	353	0.00	0	67.0	67.0	67.0	17.1	17.1
1-2 PM	3470	0.0	408	0.0	OFF	3470	0	408	0.00	0	66.4	66.4	66.4	16.6	16.6
2-3 PM	3691	0.0	434	0.0	OFF	3691	0	434	0.00	0	65.6	65.6	65.6	16.5	16.5
3-4 PM	3698	0.0	435	0.0	OFF	3698	0	435	0.00	0	65.6	65.6	65.6	16.5	16.5
4-5 PM	3542	0.0	418	0.0	OFF	3542	0	418	0.00	0	66.3	66.3	66.3	16.6	16.6
5-6 PM	3398	0.0	400	0.0	OFF	3398	0	400	0.00	0	66.5	66.5	66.5	16.7	16.7
6-7 PM	3131	0.0	368	0.0	OFF	3131	0	368	0.00	0	66.8	66.8	66.8	17.0	17.0
7-8 PM	2620	0.0	309	0.0	3000	2620	0	309	0.48	0	67.5	50.4	44.1	17.5	17.5
8-9 PM	2195	0.0	258	0.0	3000	2195	0	258	0.33	0	68.0	55.0	49.7	17.8	17.8
9-10 PM	2059	0.0	243	0.0	3000	2059	0	243	0.33	0	68.2	55.1	49.7	17.9	17.9
10-11 PM	1545	0.0	182	0.0	3000	1545	0	182	0.34	0	68.8	55.2	49.7	18.4	18.4
11PM-MID	1022	0.0	120	0.0	3000	1022	0	120	0.35	0	69.5	55.4	49.7	18.9	18.9

"OFF" INDICATES NO ROAD WORK (ALL LANES OPEN TO TRAFFIC)

*----- SITE BREAKDOWN DELAYS -----*	
BREAKDOWN DURATION (MINS)	0
RANGE OF QUEUE DELAY - MIN (VEH-H) MAX	0.0
RANGE OF DIVN DELAY - MIN (VEH-H) MAX	0.0
AV BREAKDOWNS PER DAY	0.00
AV QUEUE DELAY/DAY (VEH-H)	0.0
AV DIVN DELAY/DAY (VEH-H)	0.0
AV TOTAL DELAY/DAY (VEH-H)	0.0

*----- SITE ACCIDENT DELAYS -----*	
ACCIDENT DURATION (MINS)	0
RANGE OF QUEUE DELAY - MIN (VEH-H) MAX	0.0
RANGE OF DIVN DELAY - MIN (VEH-H) MAX	0.0
AV ACCIDENTS PER DAY	0.00
AV QUEUE DELAY/DAY (VEH-H)	0.0
AV DIVN DELAY/DAY (VEH-H)	0.0
AV TOTAL DELAY/DAY (VEH-H)	0.0

AVERAGE ACCIDENT NUMBERS (PIA/DAY)	
MAIN ROUTE WITHOUT WORKS	0.0133
MAIN ROUTE WITH WORKS	0.0125
DIVERSION	0.0201

PIA: Personal Injury Accidents

IMPACTS ON ROAD USERS	
ROAD USER COSTS PER DAY ( DOLLARS)	\$1,059
CONGESTED HOURS PER DAY*	0

\*Delays Exceeding 15 Minutes

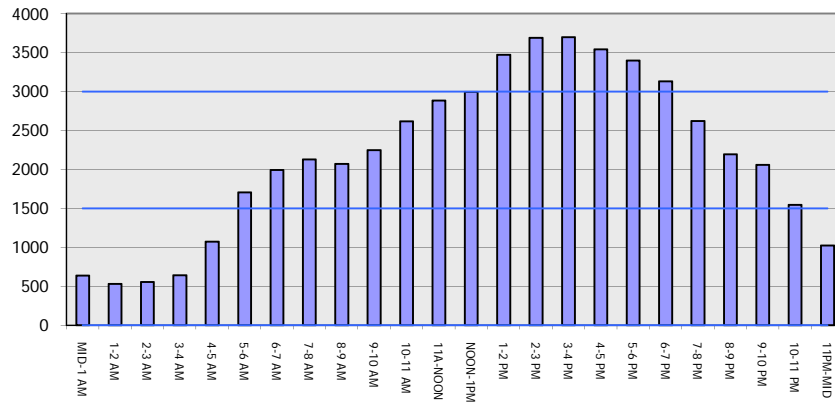
**IH 94: STH 35 N TO CARMICHAEL RD (ST CROIX COUNTY)**  
**NIGHTTIME CLOSURE**  
**DIVERSION ROUTE: STH 35 - COULEE RD - CARMICHAEL RD**

**AUGUST**  
 Analyzed for 2009  
 Construction Season

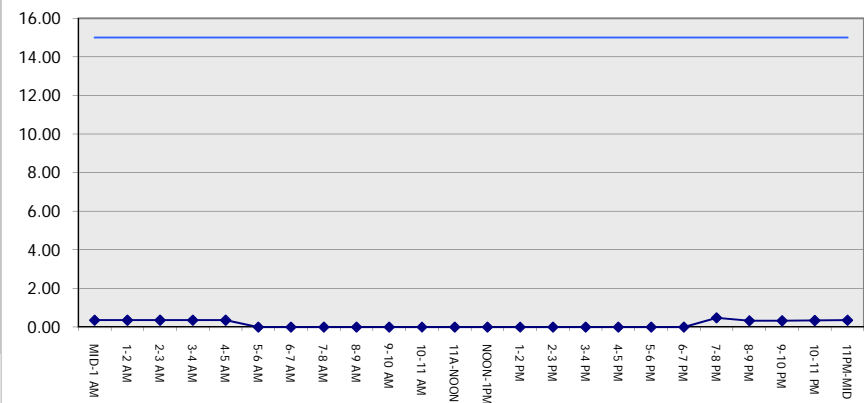
**GRAPHICAL REPRESENTATION OF TRAFFIC MODEL INPUT AND OUTPUT**

**FRIDAY WESTBOUND DIRECTION**

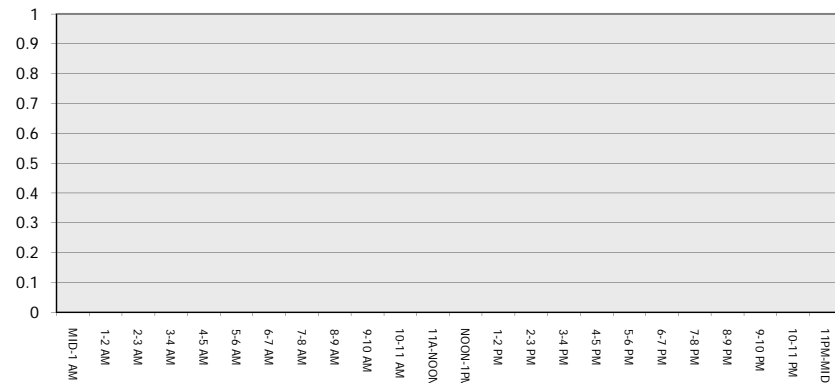
**Main Route - Traffic Demand (Vehicles Per Hour)**



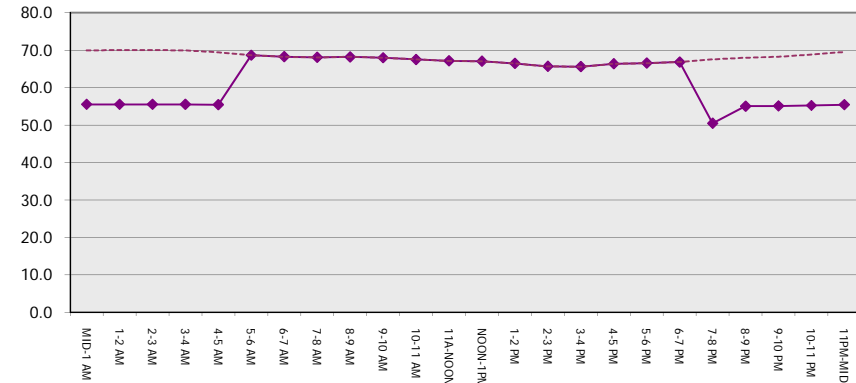
**Main Route Average Delay Per Vehicle (Minutes)**



**Main Route - Average Queue Length (Vehicles)**



**Main Route - Average Speed (MPH)**



<b>IH 94: STH 35 N TO CARMICHAEL RD (ST CROIX COUNTY)</b> <b>NIGHTTIME CLOSURE</b> <b>DIVERSION ROUTE: STH 35 - COULEE RD - CARMICHAEL RD</b>	<b>AUGUST</b>
	Analyzed for 2009 Construction Season

**SUMMARY OF TRAFFIC MODEL OUTPUT**

FRIDAY EASTBOUND DIRECTION

TIME OF DAY	FLOWS AND CAPACITY IN VEH/HR								AVERAGE SPEEDS IN MPH						
	MAIN		DIVERSION		SITE CAPA CITY	FLOW MAIN ROUTE	FLOW DIVER -TING	TOTAL DIVN FLOW	AV.DEL PER VEH (MINS)	AVERAGE QUEUE (VEH)	MAIN ROUTE		SITE	ALTERNATE ROUTE	
	DEMAND FLOW	PCT HEAVY	NORMAL FLOW	PCT HEAVY							WITHOUT WORK ZN	WITH WORK ZN		WITHOUT WORK ZN	WITH WORK ZN
MID-1 AM	720	0.0	85	0.0	3000	720	0	85	0.36	0	69.9	55.5	49.7	19.2	19.2
1-2 AM	467	0.0	55	0.0	3000	467	0	55	0.36	0	70.2	55.5	49.7	19.4	19.4
2-3 AM	411	0.0	48	0.0	3000	411	0	48	0.36	0	70.2	55.6	49.7	19.5	19.5
3-4 AM	409	0.0	48	0.0	3000	409	0	48	0.36	0	70.2	55.6	49.7	19.5	19.5
4-5 AM	516	0.0	61	0.0	3000	516	0	61	0.36	0	70.1	55.5	49.7	19.4	19.4
5-6 AM	869	0.0	103	0.0	OFF	869	0	103	0.00	0	69.7	69.7	69.7	19.1	19.1
6-7 AM	1450	0.0	171	0.0	OFF	1450	0	171	0.00	0	68.9	68.9	68.9	18.5	18.5
7-8 AM	2128	0.0	250	0.0	OFF	2128	0	250	0.00	0	68.1	68.1	68.1	17.9	17.9
8-9 AM	2536	0.0	298	0.0	OFF	2536	0	298	0.00	0	67.6	67.6	67.6	17.5	17.5
9-10 AM	3242	0.0	382	0.0	OFF	3242	0	382	0.00	0	66.7	66.7	66.7	16.9	16.9
10-11 AM	3986	0.0	470	0.0	OFF	3986	0	470	0.00	0	63.7	63.7	63.7	16.1	16.1
11A-NOON	4044	0.0	476	0.0	OFF	4044	0	476	0.00	0	63.2	63.2	63.2	16.1	16.1
NOON-1PM	4038	0.0	475	0.0	OFF	4038	0	475	0.00	0	63.3	63.3	63.3	16.1	16.1
1-2 PM	4670	0.0	550	0.0	OFF	4670	0	550	0.00	0	58.9	58.9	58.9	15.5	15.5
2-3 PM	4846	0.0	570	0.0	OFF	4846	0	570	0.00	0	57.8	57.8	57.8	15.4	15.4
3-4 PM	4695	0.0	553	0.0	OFF	4695	0	553	0.00	0	58.8	58.8	58.8	15.5	15.5
4-5 PM	4759	0.0	560	0.0	OFF	4759	0	560	0.00	0	58.4	58.4	58.4	15.5	15.5
5-6 PM	4566	0.0	538	0.0	OFF	4566	0	538	0.00	0	59.7	59.7	59.7	15.6	15.6
6-7 PM	4359	0.0	513	0.0	OFF	4359	0	513	0.00	0	61.1	61.1	61.1	15.8	15.8
7-8 PM	3132	0.0	368	0.0	2999	3132	0	368	3.07	133	66.8	21.5	37.3	17.0	17.1
8-9 PM	2207	0.0	260	0.0	3000	2207	0	260	0.51	14	68.0	50.1	49.0	17.8	17.8
9-10 PM	1634	0.0	193	0.0	3000	1634	0	193	0.34	0	68.7	55.2	49.7	18.4	18.4
10-11 PM	1394	0.0	164	0.0	3000	1394	0	164	0.34	0	69.0	55.3	49.7	18.6	18.6
11PM-MID	1051	0.0	123	0.0	3000	1051	0	123	0.35	0	69.4	55.4	49.7	18.9	18.9

"OFF" INDICATES NO ROAD WORK (ALL LANES OPEN TO TRAFFIC)

*----- SITE BREAKDOWN DELAYS -----*	
BREAKDOWN DURATION (MINS)	0
RANGE OF QUEUE DELAY - MIN	0.0
(VEH-H) MAX	0.0
RANGE OF DIVN DELAY - MIN	0.0
(VEH-H) MAX	0.0
AV BREAKDOWNS PER DAY	0.00
AV QUEUE DELAY/DAY (VEH-H)	0.0
AV DIVN DELAY/DAY (VEH-H)	0.0
AV TOTAL DELAY/DAY (VEH-H)	0.0

*----- SITE ACCIDENT DELAYS -----*	
ACCIDENT DURATION (MINS)	0
RANGE OF QUEUE DELAY - MIN	0.0
(VEH-H) MAX	0.0
RANGE OF DIVN DELAY - MIN	0.0
(VEH-H) MAX	0.0
AV ACCIDENTS PER DAY	0.00
AV QUEUE DELAY/DAY (VEH-H)	0.0
AV DIVN DELAY/DAY (VEH-H)	0.0
AV TOTAL DELAY/DAY (VEH-H)	0.0

AVERAGE ACCIDENT NUMBERS (PIA/DAY)	
MAIN ROUTE WITHOUT WORKS	0.0158
MAIN ROUTE WITH WORKS	0.0150
DIVERSION	0.0239

PIA: Personal Injury Accidents

IMPACTS ON ROAD USERS	
ROAD USER COSTS PER DAY ( DOLLARS)	\$2,894
CONGESTED HOURS PER DAY*	0

\*Delays Exceeding 15 Minutes

**IH 94: STH 35 N TO CARMICHAEL RD (ST CROIX COUNTY)  
NIGHTTIME CLOSURE  
DIVERSION ROUTE: STH 35 - COULEE RD - CARMICHAEL RD**

**AUGUST**  
Analyzed for 2009  
Construction Season

**GRAPHICAL REPRESENTATION OF TRAFFIC MODEL INPUT AND OUTPUT**  
**FRIDAY EASTBOUND DIRECTION**

