

IH 94: STH 35 N TO CARMICHAEL RD (ST CROIX COUNTY) NIGHTTIME 2 LANE CLOSURE DIVERSION ROUTE: STH 35 - COULEE RD - CARMICHAEL RD	MAY
	Analyzed for 2009 Construction Season

SUMMARY OF TRAFFIC MODEL OUTPUT

SUNDAY WESTBOUND DIRECTION

TIME OF DAY	FLOWS AND CAPACITY IN VEH/HR								AVERAGE SPEEDS IN MPH						
	MAIN ROUTE		ALTERNATE ROUTE		SITE CAPA CITY	FLOW MAIN ROUTE	FLOW DIVER -TING	TOTAL DIVN FLOW	AV.DEL PER VEH (MINS)	AVERAGE QUEUE (VEH)	MAIN ROUTE		ALTERNATE ROUTE		
	DEMAND FLOW	PCT HEAVY	NORMAL FLOW	PCT HEAVY							WITHOUT WORK ZN	WITH WORK ZN	SITE	WITHOUT WORK ZN	WITH WORK ZN
MID-1 AM	373	0.0	44	0.0	1500	373	0	44	0.52	0	70.2	50.9	44.0	19.5	19.5
1-2 AM	309	0.0	37	0.0	1500	309	0	37	0.51	0	70.2	51.0	44.3	19.6	19.6
2-3 AM	223	0.0	26	0.0	1500	223	0	26	0.50	0	70.2	51.4	44.6	19.7	19.7
3-4 AM	224	0.0	26	0.0	1500	224	0	26	0.50	0	70.2	51.4	44.6	19.7	19.7
4-5 AM	247	0.0	29	0.0	1500	247	0	29	0.50	0	70.2	51.3	44.5	19.6	19.6
5-6 AM	325	0.0	39	0.0	1500	325	0	39	0.51	0	70.2	51.0	44.2	19.6	19.6
6-7 AM	464	0.0	54	0.0	1500	464	0	54	0.53	0	70.2	50.5	43.7	19.4	19.4
7-8 AM	719	0.0	85	0.0	1500	719	0	85	0.56	0	69.9	49.7	42.7	19.2	19.2
8-9 AM	1115	0.0	131	0.0	1499	1115	0	131	0.66	0	69.4	46.9	39.7	18.8	18.8
9-10 AM	1562	0.0	184	0.0	OFF	1562	0	184	0.00	0	68.8	68.8	68.8	18.4	18.4
10-11 AM	2110	0.0	248	0.0	OFF	2110	0	248	0.00	0	68.1	68.1	68.1	17.9	17.9
11A-NOON	2614	0.0	308	0.0	OFF	2614	0	308	0.00	0	67.5	67.5	67.5	17.5	17.5
NOON-1PM	2826	0.0	333	0.0	OFF	2826	0	333	0.00	0	67.2	67.2	67.2	17.3	17.3
1-2 PM	3134	0.0	369	0.0	OFF	3134	0	369	0.00	0	66.8	66.8	66.8	17.0	17.0
2-3 PM	3598	0.0	424	0.0	OFF	3598	0	424	0.00	0	66.3	66.3	66.3	16.5	16.5
3-4 PM	3979	0.0	469	0.0	OFF	3979	0	469	0.00	0	63.7	63.7	63.7	16.2	16.2
4-5 PM	4085	0.0	481	0.0	OFF	4085	0	481	0.00	0	63.0	63.0	63.0	16.1	16.1
5-6 PM	4004	0.0	472	0.0	OFF	4004	0	472	0.00	0	63.5	63.5	63.5	16.1	16.1
6-7 PM	3631	0.0	428	0.0	OFF	3631	0	428	0.00	0	66.1	66.1	66.1	16.5	16.5
7-8 PM	3166	0.0	372	0.0	1499	1967	1200	1572	15.64	395	66.8	7.3	30.8	17.0	11.6
8-9 PM	2756	0.0	324	0.0	1499	1501	1254	1579	19.63	486	67.3	6.4	30.8	17.3	9.7
9-10 PM	2128	0.0	250	0.0	1499	1283	845	1095	13.86	340	68.1	7.7	30.8	17.9	12.4
10-11 PM	1584	0.0	186	0.0	1500	1399	186	372	8.42	193	68.7	10.4	30.8	18.4	17.4
11PM-MID	904	0.0	107	0.0	1500	904	0	107	1.04	25	69.6	39.7	41.3	19.0	19.0

"OFF" INDICATES NO ROAD WORK (ALL LANES OPEN TO TRAFFIC)

----- SITE BREAKDOWN DELAYS -----	
BREAKDOWN DURATION (MINS)	0
RANGE OF QUEUE DELAY - MIN	0.0
(VEH-H) MAX	0.0
RANGE OF DIVN DELAY - MIN	0.0
(VEH-H) MAX	0.0
AV BREAKDOWNS PER DAY	0.00
AV QUEUE DELAY/DAY (VEH-H)	0.0
AV DIVN DELAY/DAY (VEH-H)	0.0
AV TOTAL DELAY/DAY (VEH-H)	0.0

----- SITE ACCIDENT DELAYS -----	
ACCIDENT DURATION (MINS)	0
RANGE OF QUEUE DELAY - MIN	0.0
(VEH-H) MAX	0.0
RANGE OF DIVN DELAY - MIN	0.0
(VEH-H) MAX	0.0
AV ACCIDENTS PER DAY	0.00
AV QUEUE DELAY/DAY (VEH-H)	0.0
AV DIVN DELAY/DAY (VEH-H)	0.0
AV TOTAL DELAY/DAY (VEH-H)	0.0

AVERAGE ACCIDENT NUMBERS (PIA/DAY)	
MAIN ROUTE WITHOUT WORKS	0.0117
MAIN ROUTE WITH WORKS	0.0101
DIVERSION	0.0291

PIA: Personal Injury Accidents

IMPACTS ON ROAD USERS	
ROAD USER COSTS PER DAY (DOLLARS)	\$42,375
CONGESTED HOURS PER DAY*	2

*Delays Exceeding 15 Minutes

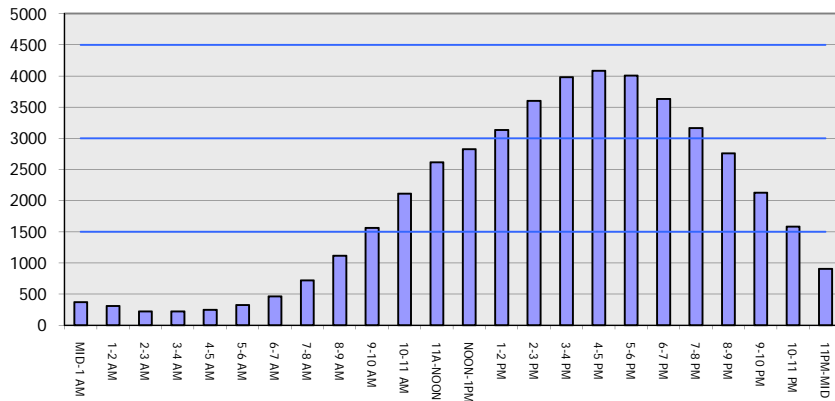
IH 94: STH 35 N TO CARMICHAEL RD (ST CROIX COUNTY)
NIGHTTIME 2 LANE CLOSURE
DIVERSION ROUTE: STH 35 - COULEE RD - CARMICHAEL RD

MAY
 Analyzed for 2009
 Construction Season

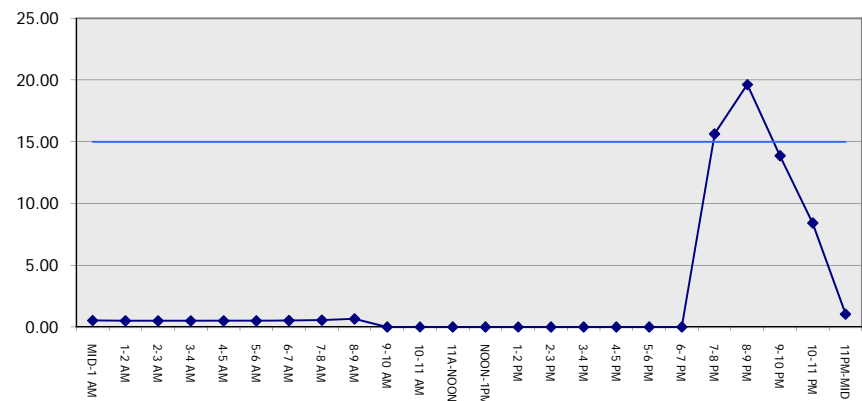
GRAPHICAL REPRESENTATION OF TRAFFIC MODEL INPUT AND OUTPUT

SUNDAY WESTBOUND DIRECTION

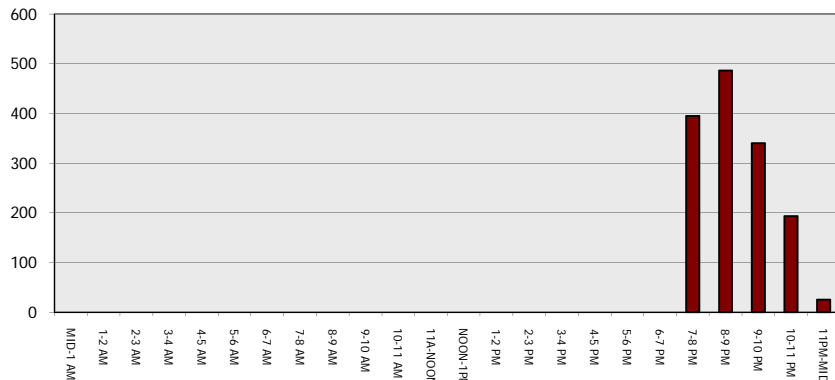
Main Route - Traffic Demand (Vehicles Per Hour)



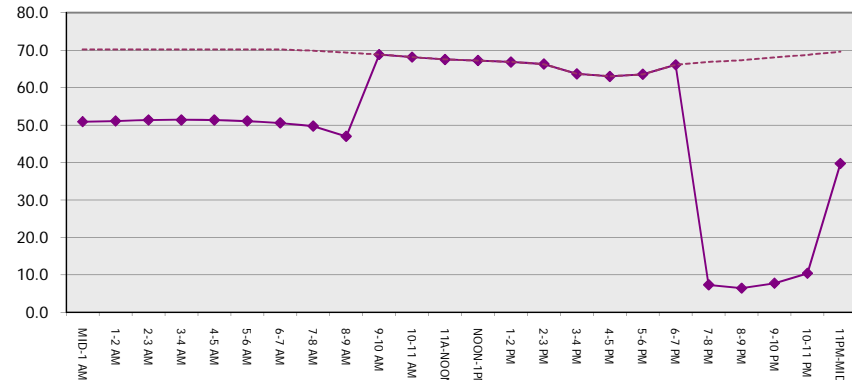
Main Route Average Delay Per Vehicle (Minutes)



Main Route - Average Queue Length (Vehicles)



Main Route - Average Speed (MPH)



IH 94: STH 35 N TO CARMICHAEL RD (ST CROIX COUNTY) NIGHTTIME 2 LANE CLOSURE DIVERSION ROUTE: STH 35 - COULEE RD - CARMICHAEL RD	MAY
	Analyzed for 2009 Construction Season

SUMMARY OF TRAFFIC MODEL OUTPUT	
SUNDAY	EASTBOUND DIRECTION

TIME OF DAY	FLOWS AND CAPACITY IN VEH/HR								AVERAGE SPEEDS IN MPH						
	MAIN		DIVERSION		SITE CAPA CITY	FLOW MAIN ROUTE	FLOW DIVER -TING	TOTAL DIVN FLOW	AV.DEL PER VEH (MINS)	AVERAGE QUEUE (VEH)	MAIN ROUTE		SITE	ALTERNATE ROUTE	
	DEMAND FLOW	PCT HEAVY	NORMAL FLOW	PCT HEAVY							WITHOUT WORK ZN	WITH WORK ZN		WITHOUT WORK ZN	WITH WORK ZN
MID-1 AM	364	0.0	43	0.0	1500	364	0	43	0.52	0	70.2	50.9	44.0	19.6	19.6
1-2 AM	236	0.0	28	0.0	1500	236	0	28	0.50	0	70.2	51.3	44.5	19.6	19.6
2-3 AM	193	0.0	23	0.0	1500	193	0	23	0.50	0	70.2	51.5	44.7	19.7	19.7
3-4 AM	176	0.0	21	0.0	1500	176	0	21	0.49	0	70.2	51.5	44.8	19.7	19.7
4-5 AM	218	0.0	26	0.0	1500	218	0	26	0.50	0	70.2	51.4	44.6	19.7	19.7
5-6 AM	336	0.0	40	0.0	1500	336	0	40	0.51	0	70.2	51.0	44.2	19.6	19.6
6-7 AM	615	0.0	72	0.0	1500	615	0	72	0.55	0	70.0	50.1	43.1	19.3	19.3
7-8 AM	980	0.0	115	0.0	1499	980	0	115	0.58	0	69.5	48.8	41.7	18.9	18.9
8-9 AM	1469	0.0	173	0.0	1499	1469	0	173	1.37	14	68.9	34.7	32.8	18.5	18.5
9-10 AM	2127	0.0	250	0.0	OFF	2127	0	250	0.01	0	68.1	67.8	67.8	17.9	17.9
10-11 AM	2758	0.0	324	0.0	OFF	2758	0	324	0.00	0	67.3	67.3	67.3	17.3	17.3
11A-NOON	2937	0.0	345	0.0	OFF	2937	0	345	0.00	0	67.1	67.1	67.1	17.1	17.1
NOON-1PM	3032	0.0	357	0.0	OFF	3032	0	357	0.00	0	66.9	66.9	66.9	17.1	17.1
1-2 PM	3053	0.0	360	0.0	OFF	3053	0	360	0.00	0	66.9	66.9	66.9	17.0	17.0
2-3 PM	2996	0.0	353	0.0	OFF	2996	0	353	0.00	0	67.0	67.0	67.0	17.1	17.1
3-4 PM	2944	0.0	346	0.0	OFF	2944	0	346	0.00	0	67.1	67.1	67.1	17.1	17.1
4-5 PM	2906	0.0	342	0.0	OFF	2906	0	342	0.00	0	67.1	67.1	67.1	17.2	17.2
5-6 PM	2634	0.0	310	0.0	OFF	2634	0	310	0.00	0	67.4	67.4	67.4	17.5	17.5
6-7 PM	2238	0.0	264	0.0	OFF	2238	0	264	0.00	0	67.9	67.9	67.9	17.8	17.8
7-8 PM	1876	0.0	221	0.0	1499	1710	166	386	7.19	168	68.4	11.6	30.8	18.1	17.1
8-9 PM	1448	0.0	171	0.0	1499	1392	56	227	7.24	163	68.9	11.4	30.8	18.5	18.3
9-10 PM	1087	0.0	128	0.0	1500	1087	0	128	0.98	15	69.4	40.6	39.7	18.9	18.9
10-11 PM	768	0.0	90	0.0	1500	768	0	90	0.56	0	69.8	49.5	42.5	19.2	19.2
11PM-MID	621	0.0	73	0.0	1500	621	0	73	0.55	0	70.0	50.0	43.0	19.3	19.3

"OFF" INDICATES NO ROAD WORK (ALL LANES OPEN TO TRAFFIC)

----- SITE BREAKDOWN DELAYS -----	
BREAKDOWN DURATION (MINS)	0
RANGE OF QUEUE DELAY - MIN	0.0
(VEH-H) MAX	0.0
RANGE OF DIVN DELAY - MIN	0.0
(VEH-H) MAX	0.0
AV BREAKDOWNS PER DAY	0.00
AV QUEUE DELAY/DAY (VEH-H)	0.0
AV DIVN DELAY/DAY (VEH-H)	0.0
AV TOTAL DELAY/DAY (VEH-H)	0.0

----- SITE ACCIDENT DELAYS -----	
ACCIDENT DURATION (MINS)	0
RANGE OF QUEUE DELAY - MIN	0.0
(VEH-H) MAX	0.0
RANGE OF DIVN DELAY - MIN	0.0
(VEH-H) MAX	0.0
AV ACCIDENTS PER DAY	0.00
AV QUEUE DELAY/DAY (VEH-H)	0.0
AV DIVN DELAY/DAY (VEH-H)	0.0
AV TOTAL DELAY/DAY (VEH-H)	0.0

AVERAGE ACCIDENT NUMBERS (PIA/DAY)	
MAIN ROUTE WITHOUT WORKS	0.0097
MAIN ROUTE WITH WORKS	0.0089
DIVERSION	0.0153

PIA: Personal Injury Accidents

IMPACTS ON ROAD USERS	
ROAD USER COSTS PER DAY (DOLLARS)	\$8,360
CONGESTED HOURS PER DAY*	0

*Delays Exceeding 15 Minutes

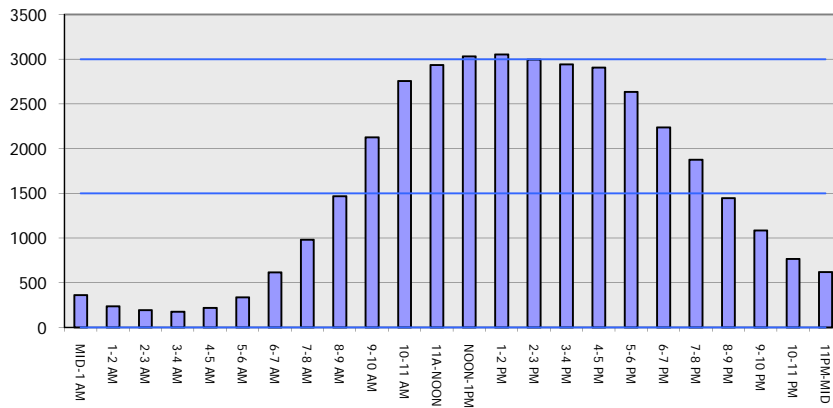
IH 94: STH 35 N TO CARMICHAEL RD (ST CROIX COUNTY)
NIGHTTIME 2 LANE CLOSURE
DIVERSION ROUTE: STH 35 - COULEE RD - CARMICHAEL RD

MAY
 Analyzed for 2009
 Construction Season

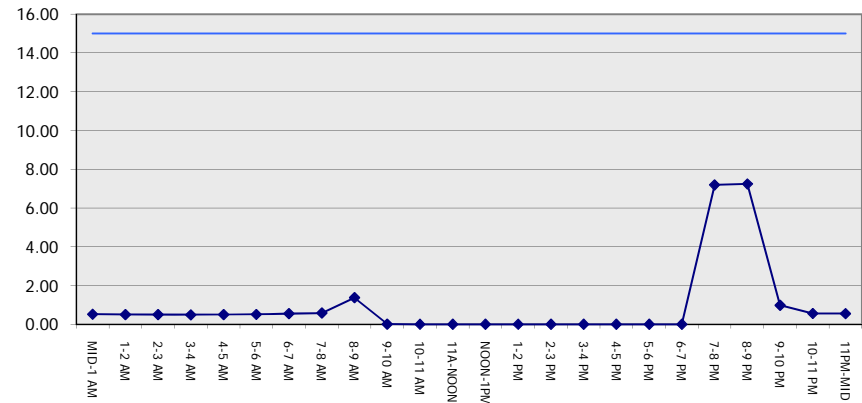
GRAPHICAL REPRESENTATION OF TRAFFIC MODEL INPUT AND OUTPUT

SUNDAY EASTBOUND DIRECTION

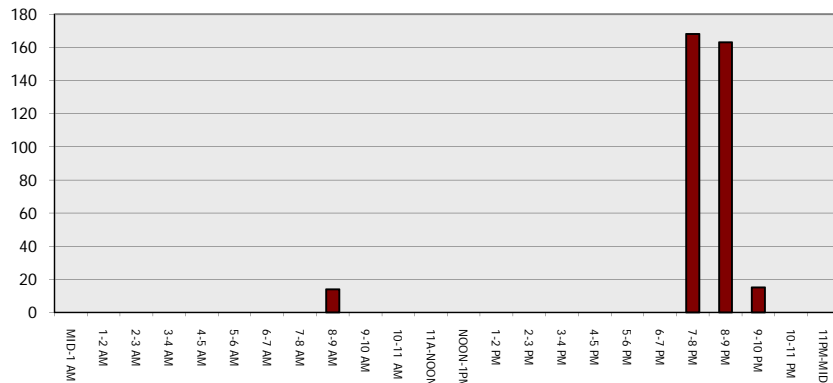
Main Route - Traffic Demand (Vehicles Per Hour)



Main Route Average Delay Per Vehicle (Minutes)



Main Route - Average Queue Length (Vehicles)



Main Route - Average Speed (MPH)

