

IH 94: STH 35 N TO CARMICHAEL RD (ST CROIX COUNTY) NIGHTTIME 2 LANE CLOSURE DIVERSION ROUTE: STH 35 - COULEE RD - CARMICHAEL RD	MAY
	Analyzed for 2009 Construction Season

SUMMARY OF TRAFFIC MODEL OUTPUT

MON-THUR WESTBOUND DIRECTION

TIME OF DAY	FLOWS AND CAPACITY IN VEH/HR						AVERAGE SPEEDS IN MPH								
	MAIN ROUTE		ALTERNATE ROUTE		SITE CAPA CITY	FLOW MAIN ROUTE	FLOW DIVER -TING	TOTAL DIVN FLOW	AV.DEL PER VEH (MINS)	AVERAGE QUEUE (VEH)	MAIN ROUTE		ALTERNATE ROUTE		
	DEMAND FLOW	PCT HEAVY	NORMAL FLOW	PCT HEAVY							WITHOUT WORK ZN	WITH WORK ZN	SITE	WITHOUT WORK ZN	WITH WORK ZN
MID-1 AM	492	0.0	58	0.0	1500	492	0	58	0.53	0	70.1	50.5	43.5	19.4	19.4
1-2 AM	425	0.0	50	0.0	1500	425	0	50	0.52	0	70.2	50.7	43.8	19.5	19.5
2-3 AM	454	0.0	53	0.0	1500	454	0	53	0.53	0	70.2	50.6	43.7	19.4	19.4
3-4 AM	651	0.0	76	0.0	1500	651	0	76	0.55	0	69.9	49.9	42.9	19.3	19.3
4-5 AM	1197	0.0	141	0.0	1499	1197	0	141	0.74	0	69.2	45.1	37.7	18.8	18.8
5-6 AM	1988	0.0	234	0.0	OFF	1988	0	234	0.00	0	68.2	68.2	68.2	18.0	18.0
6-7 AM	2174	0.0	256	0.0	OFF	2174	0	256	0.00	0	68.1	68.1	68.1	17.9	17.9
7-8 AM	2135	0.0	251	0.0	OFF	2135	0	251	0.00	0	68.1	68.1	68.1	17.9	17.9
8-9 AM	1916	0.0	226	0.0	OFF	1916	0	226	0.00	0	68.4	68.4	68.4	18.1	18.1
9-10 AM	1929	0.0	227	0.0	OFF	1929	0	227	0.00	0	68.3	68.3	68.3	18.1	18.1
10-11 AM	2002	0.0	235	0.0	OFF	2002	0	235	0.00	0	68.2	68.2	68.2	18.0	18.0
11A-NOON	2080	0.0	245	0.0	OFF	2080	0	245	0.00	0	68.1	68.1	68.1	17.9	17.9
NOON-1PM	2197	0.0	258	0.0	OFF	2197	0	258	0.00	0	68.0	68.0	68.0	17.8	17.8
1-2 PM	2403	0.0	282	0.0	OFF	2403	0	282	0.00	0	67.8	67.8	67.8	17.6	17.6
2-3 PM	2496	0.0	294	0.0	OFF	2496	0	294	0.00	0	67.6	67.6	67.6	17.6	17.6
3-4 PM	2664	0.0	314	0.0	OFF	2664	0	314	0.00	0	67.4	67.4	67.4	17.4	17.4
4-5 PM	2692	0.0	317	0.0	OFF	2692	0	317	0.00	0	67.4	67.4	67.4	17.4	17.4
5-6 PM	2317	0.0	273	0.0	OFF	2317	0	273	0.00	0	67.9	67.9	67.9	17.7	17.7
6-7 PM	1987	0.0	234	0.0	OFF	1987	0	234	0.00	0	68.2	68.2	68.2	18.0	18.0
7-8 PM	1705	0.0	201	0.0	1499	1705	0	201	5.06	117	68.6	15.1	30.8	18.3	18.4
8-9 PM	1496	0.0	176	0.0	1499	1439	57	232	7.71	173	68.9	10.9	30.8	18.5	18.3
9-10 PM	1200	0.0	141	0.0	1499	1200	0	141	1.64	45	69.2	31.7	36.9	18.8	18.8
10-11 PM	903	0.0	107	0.0	1500	903	0	107	0.58	0	69.6	49.1	42.0	19.0	19.0
11PM-MID	594	0.0	70	0.0	1500	594	0	70	0.54	0	70.0	50.1	43.2	19.3	19.3

"OFF" INDICATES NO ROAD WORK (ALL LANES OPEN TO TRAFFIC)

----- SITE BREAKDOWN DELAYS -----	
BREAKDOWN DURATION (MINS)	0
RANGE OF QUEUE DELAY - MIN (VEH-H) MAX	0.0
RANGE OF DIVN DELAY - MIN (VEH-H) MAX	0.0
AV BREAKDOWNS PER DAY	0.00
AV QUEUE DELAY/DAY (VEH-H)	0.0
AV DIVN DELAY/DAY (VEH-H)	0.0
AV TOTAL DELAY/DAY (VEH-H)	0.0

----- SITE ACCIDENT DELAYS -----	
ACCIDENT DURATION (MINS)	0
RANGE OF QUEUE DELAY - MIN (VEH-H) MAX	0.0
RANGE OF DIVN DELAY - MIN (VEH-H) MAX	0.0
AV ACCIDENTS PER DAY	0.00
AV QUEUE DELAY/DAY (VEH-H)	0.0
AV DIVN DELAY/DAY (VEH-H)	0.0
AV TOTAL DELAY/DAY (VEH-H)	0.0

AVERAGE ACCIDENT NUMBERS (PIA/DAY)	
MAIN ROUTE WITHOUT WORKS	0.0102
MAIN ROUTE WITH WORKS	0.0096
DIVERSION	0.0156

PIA: Personal Injury Accidents

IMPACTS ON ROAD USERS	
ROAD USER COSTS PER DAY (DOLLARS)	\$6,005
CONGESTED HOURS PER DAY*	0

*Delays Exceeding 15 Minutes

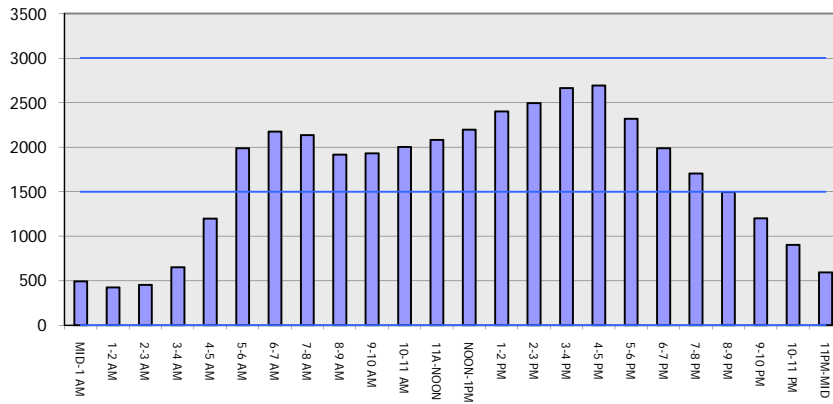
IH 94: STH 35 N TO CARMICHAEL RD (ST CROIX COUNTY)
NIGHTTIME 2 LANE CLOSURE
DIVERSION ROUTE: STH 35 - COULEE RD - CARMICHAEL RD

MAY
 Analyzed for 2009
 Construction Season

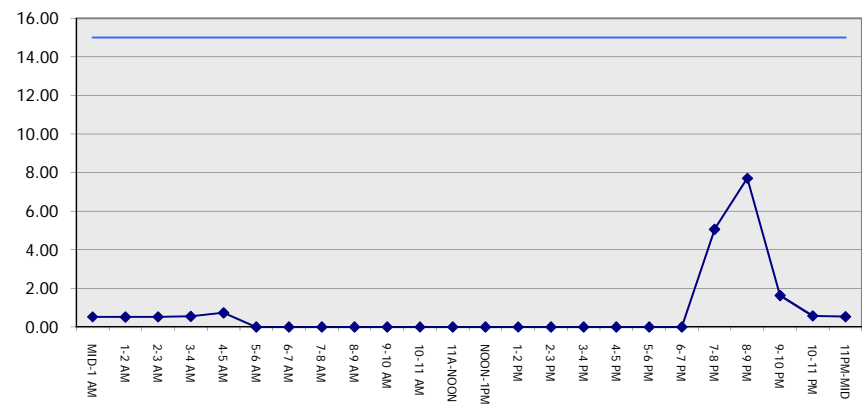
GRAPHICAL REPRESENTATION OF TRAFFIC MODEL INPUT AND OUTPUT

MON-THUR WESTBOUND DIRECTION

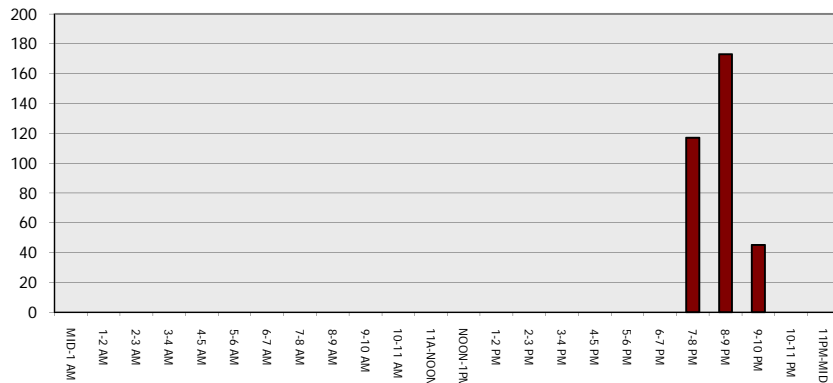
Main Route - Traffic Demand (Vehicles Per Hour)



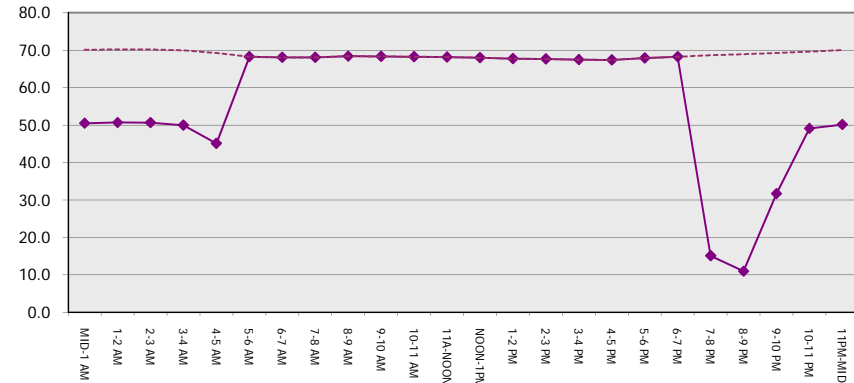
Main Route Average Delay Per Vehicle (Minutes)



Main Route - Average Queue Length (Vehicles)



Main Route - Average Speed (MPH)



IH 94: STH 35 N TO CARMICHAEL RD (ST CROIX COUNTY) NIGHTTIME 2 LANE CLOSURE DIVERSION ROUTE: STH 35 - COULEE RD - CARMICHAEL RD	MAY
	Analyzed for 2009 Construction Season

SUMMARY OF TRAFFIC MODEL OUTPUT

MON-THUR EASTBOUND DIRECTION

TIME OF DAY	FLOWS AND CAPACITY IN VEH/HR								AVERAGE SPEEDS IN MPH							
	MAIN		DIVERSION		SITE CAPA CITY	FLOW MAIN ROUTE	FLOW DIVER -TING	TOTAL DIVN FLOW	AV.DEL PER VEH (MINS)	AVERAGE QUEUE (VEH)	MAIN ROUTE		SITE	ALTERNATE ROUTE		
	DEMAND FLOW	PCT HEAVY	NORMAL FLOW	PCT HEAVY							WITHOUT WORK ZN	WITH WORK ZN		WITHOUT WORK ZN	WITH WORK ZN	
MID-1 AM	455	0.0	53	0.0	1500	455	0	53	0.53	0	70.2	50.6	43.7	19.4	19.4	
1-2 AM	325	0.0	39	0.0	1500	325	0	39	0.51	0	70.2	51.0	44.2	19.6	19.6	
2-3 AM	284	0.0	33	0.0	1500	284	0	33	0.51	0	70.2	51.2	44.3	19.6	19.6	
3-4 AM	327	0.0	39	0.0	1500	327	0	39	0.51	0	70.2	51.0	44.2	19.6	19.6	
4-5 AM	491	0.0	58	0.0	1500	491	0	58	0.53	0	70.1	50.5	43.5	19.4	19.4	
5-6 AM	855	0.0	100	0.0	OFF	855	0	100	0.00	0	69.7	69.7	69.7	19.1	19.1	
6-7 AM	1437	0.0	169	0.0	OFF	1437	0	169	0.00	0	68.9	68.9	68.9	18.6	18.6	
7-8 AM	1694	0.0	200	0.0	OFF	1694	0	200	0.00	0	68.6	68.6	68.6	18.3	18.3	
8-9 AM	1879	0.0	221	0.0	OFF	1879	0	221	0.00	0	68.4	68.4	68.4	18.1	18.1	
9-10 AM	2223	0.0	262	0.0	OFF	2223	0	262	0.00	0	68.0	68.0	68.0	17.8	17.8	
10-11 AM	2324	0.0	274	0.0	OFF	2324	0	274	0.00	0	67.9	67.9	67.9	17.7	17.7	
11A-NOON	2311	0.0	272	0.0	OFF	2311	0	272	0.00	0	67.9	67.9	67.9	17.8	17.8	
NOON-1PM	2338	0.0	275	0.0	OFF	2338	0	275	0.00	0	67.8	67.8	67.8	17.7	17.7	
1-2 PM	2466	0.0	291	0.0	OFF	2466	0	291	0.00	0	67.7	67.7	67.7	17.6	17.6	
2-3 PM	2681	0.0	316	0.0	OFF	2681	0	316	0.00	0	67.4	67.4	67.4	17.4	17.4	
3-4 PM	3014	0.0	355	0.0	OFF	3014	0	355	0.00	0	67.0	67.0	67.0	17.1	17.1	
4-5 PM	2831	0.0	334	0.0	OFF	2831	0	334	0.00	0	67.2	67.2	67.2	17.3	17.3	
5-6 PM	2374	0.0	279	0.0	OFF	2374	0	279	0.00	0	67.8	67.8	67.8	17.7	17.7	
6-7 PM	2067	0.0	244	0.0	OFF	2067	0	244	0.00	0	68.2	68.2	68.2	17.9	17.9	
7-8 PM	1708	0.0	201	0.0	1499	1696	12	213	5.37	124	68.6	14.4	30.8	18.3	18.3	
8-9 PM	1338	0.0	158	0.0	1499	1325	13	171	5.16	120	69.1	14.8	32.0	18.6	18.6	
9-10 PM	1146	0.0	135	0.0	1500	1146	0	135	0.67	0	69.3	46.6	39.9	18.8	18.8	
10-11 PM	917	0.0	108	0.0	1500	917	0	108	0.58	0	69.6	49.0	42.0	19.0	19.0	
11PM-MID	587	0.0	69	0.0	1500	587	0	69	0.54	0	70.0	50.1	43.2	19.3	19.3	

"OFF" INDICATES NO ROAD WORK (ALL LANES OPEN TO TRAFFIC)

----- SITE BREAKDOWN DELAYS -----	
BREAKDOWN DURATION (MINS)	0
RANGE OF QUEUE DELAY - MIN	0.0
(VEH-H) MAX	0.0
RANGE OF DIVN DELAY - MIN	0.0
(VEH-H) MAX	0.0
AV BREAKDOWNS PER DAY	0.00
AV QUEUE DELAY/DAY (VEH-H)	0.0
AV DIVN DELAY/DAY (VEH-H)	0.0
AV TOTAL DELAY/DAY (VEH-H)	0.0

----- SITE ACCIDENT DELAYS -----	
ACCIDENT DURATION (MINS)	0
RANGE OF QUEUE DELAY - MIN	0.0
(VEH-H) MAX	0.0
RANGE OF DIVN DELAY - MIN	0.0
(VEH-H) MAX	0.0
AV ACCIDENTS PER DAY	0.00
AV QUEUE DELAY/DAY (VEH-H)	0.0
AV DIVN DELAY/DAY (VEH-H)	0.0
AV TOTAL DELAY/DAY (VEH-H)	0.0

AVERAGE ACCIDENT NUMBERS (PIA/DAY)	
MAIN ROUTE WITHOUT WORKS	0.0097
MAIN ROUTE WITH WORKS	0.0092
DIVERSION	0.0147

PIA: Personal Injury Accidents

IMPACTS ON ROAD USERS	
ROAD USER COSTS PER DAY (DOLLARS)	\$4,496
CONGESTED HOURS PER DAY*	0

*Delays Exceeding 15 Minutes

**IH 94: STH 35 N TO CARMICHAEL RD (ST CROIX COUNTY)
 NIGHTTIME 2 LANE CLOSURE
 DIVERSION ROUTE: STH 35 - COULEE RD - CARMICHAEL RD**

MAY
 Analyzed for 2009
 Construction Season

GRAPHICAL REPRESENTATION OF TRAFFIC MODEL INPUT AND OUTPUT
MON-THUR EASTBOUND DIRECTION

