

<b>IH 94: STH 35 N TO CARMICHAEL RD (ST CROIX COUNTY)</b> <b>NIGHTTIME 2 LANE CLOSURE</b> <b>DIVERSION ROUTE: STH 35 - COULEE RD - CARMICHAEL RD</b>	<b>MAY</b>
	Analyzed for 2009 Construction Season

**SUMMARY OF TRAFFIC MODEL OUTPUT**

**FRIDAY WESTBOUND DIRECTION**

TIME OF DAY	FLOWS AND CAPACITY IN VEH/HR										AVERAGE SPEEDS IN MPH				
	MAIN ROUTE		ALTERNATE ROUTE		SITE CAPA CITY	FLOW MAIN ROUTE	FLOW DIVER -TING	TOTAL DIVN FLOW	AV.DEL PER VEH (MINS)	AVERAGE QUEUE (VEH)	MAIN ROUTE		ALTERNATE ROUTE		
	DEMAND FLOW	PCT HEAVY	NORMAL FLOW	PCT HEAVY							WITHOUT WORK ZN	WITH WORK ZN	SITE	WITHOUT WORK ZN	WITH WORK ZN
MID-1 AM	601	0.0	71	0.0	1500	601	0	71	0.54	0	70.0	50.1	43.1	19.3	19.3
1-2 AM	561	0.0	66	0.0	1500	561	0	66	0.54	0	70.0	50.2	43.3	19.4	19.4
2-3 AM	545	0.0	64	0.0	1500	545	0	64	0.54	0	70.0	50.3	43.3	19.4	19.4
3-4 AM	619	0.0	73	0.0	1500	619	0	73	0.55	0	70.0	50.0	43.0	19.3	19.3
4-5 AM	1011	0.0	119	0.0	1499	1011	0	119	0.61	0	69.5	48.3	41.1	18.9	18.9
5-6 AM	1738	0.0	205	0.0	OFF	1738	0	205	0.00	0	68.6	68.6	68.6	18.3	18.3
6-7 AM	2322	0.0	273	0.0	OFF	2322	0	273	0.00	0	67.9	67.9	67.9	17.7	17.7
7-8 AM	2308	0.0	272	0.0	OFF	2308	0	272	0.00	0	67.9	67.9	67.9	17.8	17.8
8-9 AM	2116	0.0	249	0.0	OFF	2116	0	249	0.00	0	68.1	68.1	68.1	17.9	17.9
9-10 AM	2189	0.0	257	0.0	OFF	2189	0	257	0.00	0	68.0	68.0	68.0	17.8	17.8
10-11 AM	2271	0.0	267	0.0	OFF	2271	0	267	0.00	0	67.9	67.9	67.9	17.8	17.8
11A-NOON	2476	0.0	292	0.0	OFF	2476	0	292	0.00	0	67.6	67.6	67.6	17.6	17.6
NOON-1PM	2770	0.0	326	0.0	OFF	2770	0	326	0.00	0	67.3	67.3	67.3	17.3	17.3
1-2 PM	3096	0.0	364	0.0	OFF	3096	0	364	0.00	0	66.9	66.9	66.9	17.0	17.0
2-3 PM	3193	0.0	376	0.0	OFF	3193	0	376	0.00	0	66.8	66.8	66.8	16.9	16.9
3-4 PM	3387	0.0	399	0.0	OFF	3387	0	399	0.00	0	66.5	66.5	66.5	16.8	16.8
4-5 PM	3423	0.0	403	0.0	OFF	3423	0	403	0.00	0	66.5	66.5	66.5	16.7	16.7
5-6 PM	3277	0.0	386	0.0	OFF	3277	0	386	0.00	0	66.6	66.6	66.6	16.8	16.8
6-7 PM	2855	0.0	336	0.0	OFF	2855	0	336	0.00	0	67.2	67.2	67.2	17.2	17.2
7-8 PM	2369	0.0	279	0.0	1499	1834	535	814	11.41	283	67.8	8.7	30.8	17.7	14.4
8-9 PM	2157	0.0	254	0.0	1500	1438	719	973	12.53	300	68.1	8.1	30.8	17.9	13.2
9-10 PM	1833	0.0	216	0.0	1500	1434	400	615	9.88	231	68.4	9.4	30.8	18.2	15.7
10-11 PM	1467	0.0	173	0.0	1500	1404	63	235	7.39	166	68.9	11.2	30.8	18.5	18.3
11PM-MID	956	0.0	113	0.0	1500	956	0	113	0.86	13	69.6	42.8	41.5	19.0	19.0

"OFF" INDICATES NO ROAD WORK (ALL LANES OPEN TO TRAFFIC)

*----- SITE BREAKDOWN DELAYS -----*	
BREAKDOWN DURATION (MINS)	0
RANGE OF QUEUE DELAY - MIN (VEH-H) MAX	0.0
RANGE OF DIVN DELAY - MIN (VEH-H) MAX	0.0
AV BREAKDOWNS PER DAY	0.00
AV QUEUE DELAY/DAY (VEH-H)	0.0
AV DIVN DELAY/DAY (VEH-H)	0.0
AV TOTAL DELAY/DAY (VEH-H)	0.0

*----- SITE ACCIDENT DELAYS -----*	
ACCIDENT DURATION (MINS)	0
RANGE OF QUEUE DELAY - MIN (VEH-H) MAX	0.0
RANGE OF DIVN DELAY - MIN (VEH-H) MAX	0.0
AV ACCIDENTS PER DAY	0.00
AV QUEUE DELAY/DAY (VEH-H)	0.0
AV DIVN DELAY/DAY (VEH-H)	0.0
AV TOTAL DELAY/DAY (VEH-H)	0.0

AVERAGE ACCIDENT NUMBERS (PIA/DAY)	
MAIN ROUTE WITHOUT WORKS	0.0126
MAIN ROUTE WITH WORKS	0.0115
DIVERSION	0.0246

PIA: Personal Injury Accidents

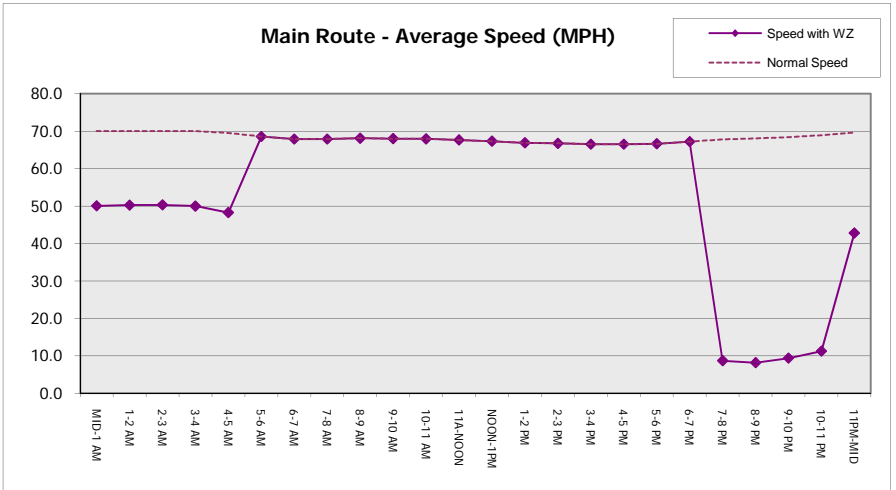
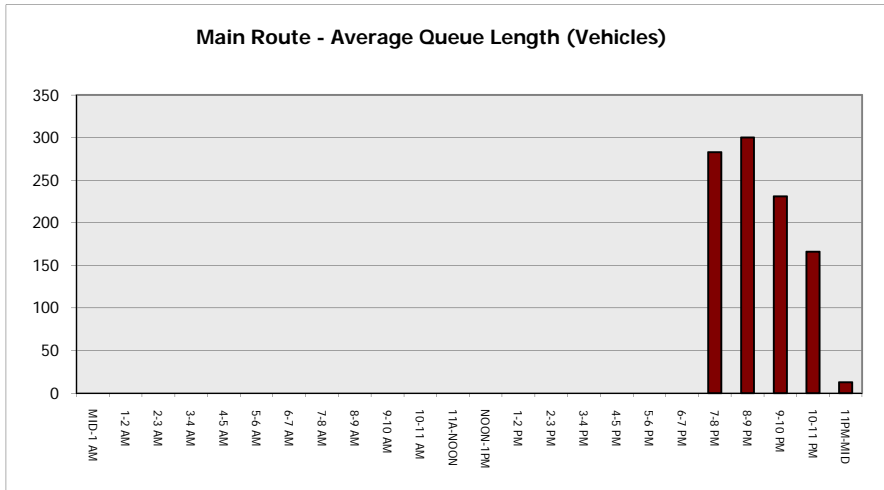
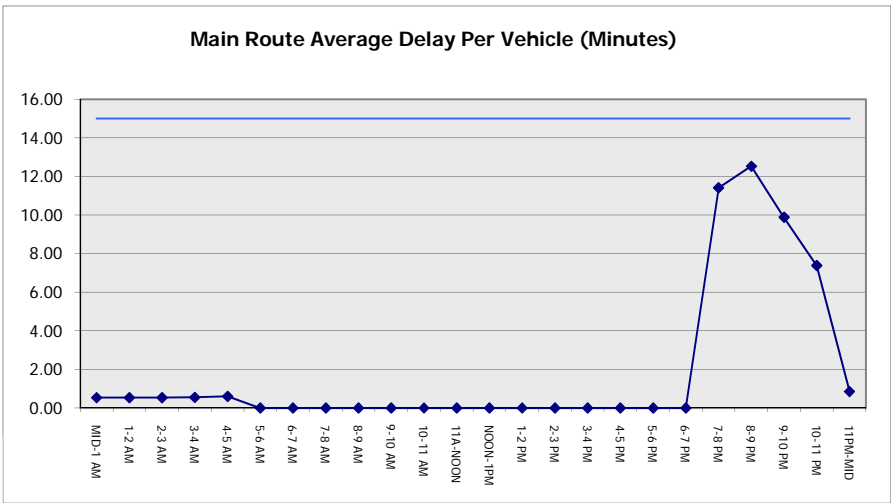
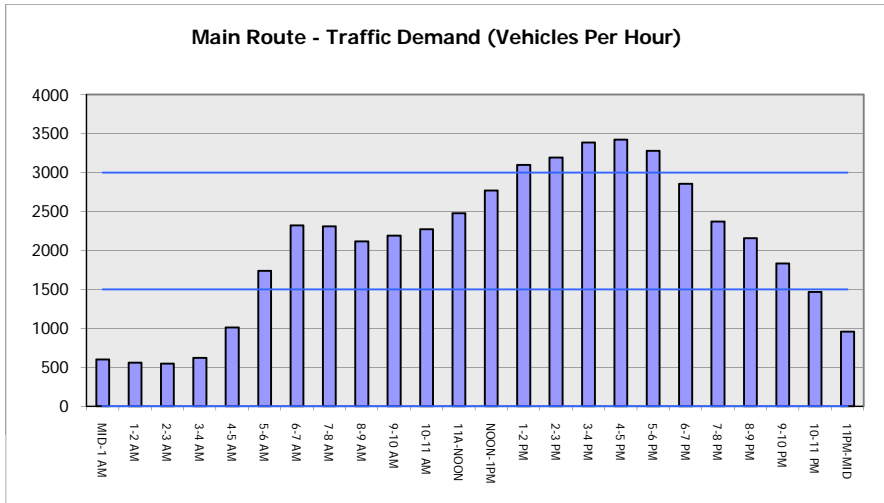
IMPACTS ON ROAD USERS	
ROAD USER COSTS PER DAY ( DOLLARS)	\$21,525
CONGESTED HOURS PER DAY*	0

\*Delays Exceeding 15 Minutes

**IH 94: STH 35 N TO CARMICHAEL RD (ST CROIX COUNTY)**  
**NIGHTTIME 2 LANE CLOSURE**  
**DIVERSION ROUTE: STH 35 - COULEE RD - CARMICHAEL RD**

**MAY**  
 Analyzed for 2009  
 Construction Season

**GRAPHICAL REPRESENTATION OF TRAFFIC MODEL INPUT AND OUTPUT**  
**FRIDAY WESTBOUND DIRECTION**



<b>IH 94: STH 35 N TO CARMICHAEL RD (ST CROIX COUNTY) NIGHTTIME 2 LANE CLOSURE DIVERSION ROUTE: STH 35 - COULEE RD - CARMICHAEL RD</b>	<b>MAY</b> Analyzed for 2009 Construction Season
--	--

<b>SUMMARY OF TRAFFIC MODEL OUTPUT</b>	
FRIDAY	EASTBOUND DIRECTION

TIME OF DAY	FLOWS AND CAPACITY IN VEH/HR								AVERAGE SPEEDS IN MPH							
	MAIN		DIVERSION		SITE CAPA CITY	FLOW MAIN ROUTE	FLOW DIVER -TING	TOTAL DIVN FLOW	AV.DEL PER VEH (MINS)	AVERAGE QUEUE (VEH)	MAIN ROUTE		SITE	ALTERNATE ROUTE		
	DEMAND FLOW	PCT HEAVY	NORMAL FLOW	PCT HEAVY							WITHOUT WORK ZN	WITH WORK ZN		WITHOUT WORK ZN	WITH WORK ZN	
MID-1 AM	581	0.0	68	0.0	1500	581	0	68	0.54	0	70.0	50.2	43.2	19.3	19.3	
1-2 AM	378	0.0	44	0.0	1500	378	0	44	0.52	0	70.2	50.9	44.0	19.5	19.5	
2-3 AM	369	0.0	44	0.0	1500	369	0	44	0.52	0	70.2	50.9	44.0	19.5	19.5	
3-4 AM	358	0.0	42	0.0	1500	358	0	42	0.52	0	70.2	50.9	44.0	19.6	19.6	
4-5 AM	533	0.0	63	0.0	1500	533	0	63	0.54	0	70.0	50.3	43.4	19.4	19.4	
5-6 AM	827	0.0	97	0.0	OFF	827	0	97	0.00	0	69.7	69.7	69.7	19.1	19.1	
6-7 AM	1397	0.0	164	0.0	OFF	1397	0	164	0.00	0	69.0	69.0	69.0	18.6	18.6	
7-8 AM	2093	0.0	246	0.0	OFF	2093	0	246	0.00	0	68.1	68.1	68.1	17.9	17.9	
8-9 AM	2361	0.0	278	0.0	OFF	2361	0	278	0.00	0	67.8	67.8	67.8	17.7	17.7	
9-10 AM	2945	0.0	346	0.0	OFF	2945	0	346	0.00	0	67.1	67.1	67.1	17.1	17.1	
10-11 AM	3261	0.0	384	0.0	OFF	3261	0	384	0.00	0	66.7	66.7	66.7	16.8	16.8	
11A-NOON	3399	0.0	400	0.0	OFF	3399	0	400	0.00	0	66.5	66.5	66.5	16.7	16.7	
NOON-1PM	3609	0.0	425	0.0	OFF	3609	0	425	0.00	0	66.2	66.2	66.2	16.5	16.5	
1-2 PM	4152	0.0	489	0.0	OFF	4152	0	489	0.00	0	62.5	62.5	62.5	16.0	16.0	
2-3 PM	4184	0.0	493	0.0	OFF	4184	0	493	0.00	0	62.3	62.3	62.3	16.0	16.0	
3-4 PM	4599	0.0	542	0.0	OFF	4599	0	542	0.00	0	59.4	59.4	59.4	15.6	15.6	
4-5 PM	4687	0.0	551	0.0	OFF	4687	0	551	0.00	0	58.8	58.8	58.8	15.5	15.5	
5-6 PM	4501	0.0	529	0.0	OFF	4501	0	529	0.00	0	60.1	60.1	60.1	15.7	15.7	
6-7 PM	4318	0.0	508	0.0	OFF	4318	0	508	0.00	0	61.4	61.4	61.4	15.9	15.9	
7-8 PM	3003	0.0	354	0.0	1499	1928	1075	1429	15.64	394	67.0	7.3	30.8	17.1	11.6	
8-9 PM	2013	0.0	236	0.0	1499	1291	722	958	12.51	305	68.2	8.2	30.9	18.0	13.4	
9-10 PM	1486	0.0	175	0.0	1500	1405	81	256	7.62	172	68.9	11.0	30.8	18.5	18.1	
10-11 PM	1221	0.0	143	0.0	1499	1221	0	143	1.54	36	69.2	32.8	36.5	18.8	18.8	
11PM-MID	917	0.0	108	0.0	1500	917	0	108	0.58	0	69.6	49.0	42.0	19.0	19.0	

"OFF" INDICATES NO ROAD WORK (ALL LANES OPEN TO TRAFFIC)

*----- SITE BREAKDOWN DELAYS -----*	
BREAKDOWN DURATION (MINS)	0
RANGE OF QUEUE DELAY - MIN	0.0
(VEH-H) MAX	0.0
RANGE OF DIVN DELAY - MIN	0.0
(VEH-H) MAX	0.0
AV BREAKDOWNS PER DAY	0.00
AV QUEUE DELAY/DAY (VEH-H)	0.0
AV DIVN DELAY/DAY (VEH-H)	0.0
AV TOTAL DELAY/DAY (VEH-H)	0.0

*----- SITE ACCIDENT DELAYS -----*	
ACCIDENT DURATION (MINS)	0
RANGE OF QUEUE DELAY - MIN	0.0
(VEH-H) MAX	0.0
RANGE OF DIVN DELAY - MIN	0.0
(VEH-H) MAX	0.0
AV ACCIDENTS PER DAY	0.00
AV QUEUE DELAY/DAY (VEH-H)	0.0
AV DIVN DELAY/DAY (VEH-H)	0.0
AV TOTAL DELAY/DAY (VEH-H)	0.0

AVERAGE ACCIDENT NUMBERS (PIA/DAY)	
MAIN ROUTE WITHOUT WORKS	0.0145
MAIN ROUTE WITH WORKS	0.0135
DIVERSION	0.0281

PIA: Personal Injury Accidents

IMPACTS ON ROAD USERS	
ROAD USER COSTS PER DAY ( DOLLARS)	\$21,864
CONGESTED HOURS PER DAY*	1

\*Delays Exceeding 15 Minutes

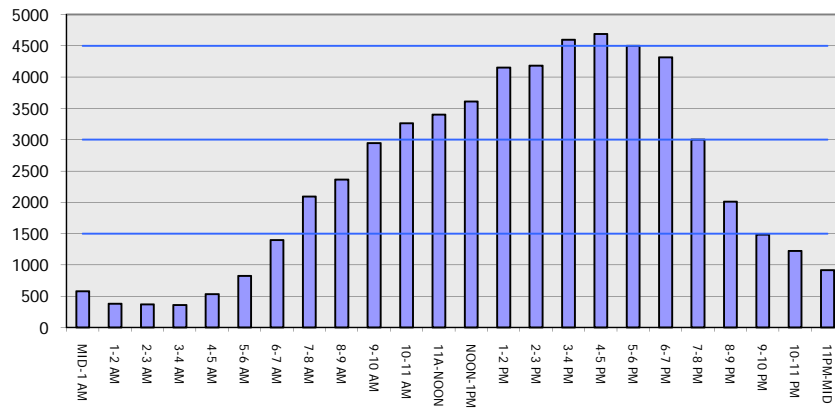
**IH 94: STH 35 N TO CARMICHAEL RD (ST CROIX COUNTY)**  
**NIGHTTIME 2 LANE CLOSURE**  
**DIVERSION ROUTE: STH 35 - COULEE RD - CARMICHAEL RD**

**MAY**  
 Analyzed for 2009  
 Construction Season

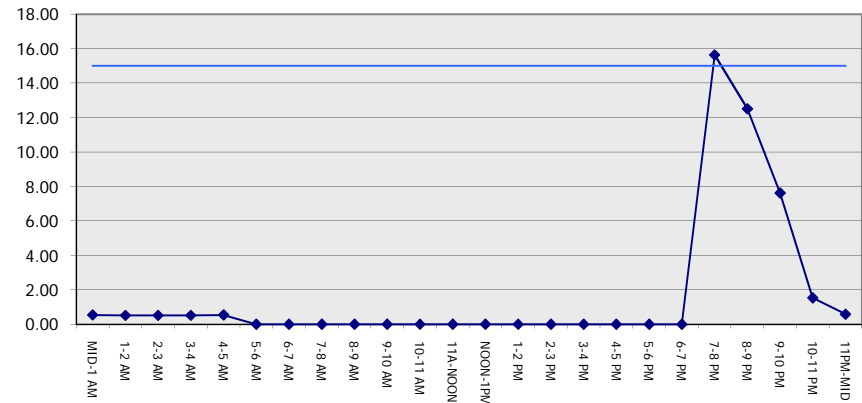
**GRAPHICAL REPRESENTATION OF TRAFFIC MODEL INPUT AND OUTPUT**

**FRIDAY EASTBOUND DIRECTION**

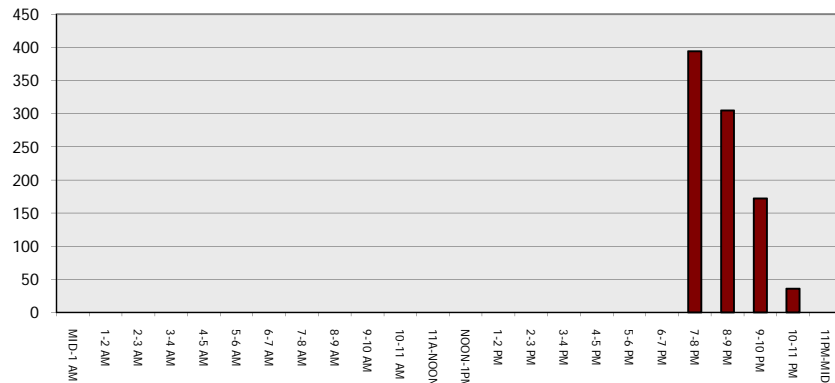
**Main Route - Traffic Demand (Vehicles Per Hour)**



**Main Route Average Delay Per Vehicle (Minutes)**



**Main Route - Average Queue Length (Vehicles)**



**Main Route - Average Speed (MPH)**

