

IH 94: CARMICHAEL RD TO STH 35 S (ST CROIX COUNTY) NIGHTTIME 2 LANE CLOSURE DIVERSION ROUTE: CARMICHAEL RD - STAGELINE RD - USH 12	AUGUST
	Analyzed for 2009 Construction Season

SUMMARY OF TRAFFIC MODEL OUTPUT

FRIDAY WESTBOUND DIRECTION

TIME OF DAY	FLOWS AND CAPACITY IN VEH/HR								AVERAGE SPEEDS IN MPH						
	MAIN ROUTE		ALTERNATE ROUTE		SITE CAPA CITY	FLOW MAIN ROUTE	FLOW DIVER -TING	TOTAL DIVN FLOW	AV.DEL PER VEH (MINS)	AVERAGE QUEUE (VEH)	MAIN ROUTE		ALTERNATE ROUTE		
	DEMAND FLOW	PCT HEAVY	NORMAL FLOW	PCT HEAVY							WITHOUT WORK ZN	WITH WORK ZN	SITE	WITHOUT WORK ZN	WITH WORK ZN
MID-1 AM	559	0.0	37	0.0	1500	559	0	37	0.54	0	70.0	47.1	43.3	19.6	19.6
1-2 AM	465	0.0	30	0.0	1500	465	0	30	0.53	0	70.2	47.5	43.7	19.7	19.7
2-3 AM	484	0.0	32	0.0	1500	484	0	32	0.53	0	70.1	47.4	43.6	19.7	19.7
3-4 AM	563	0.0	37	0.0	1500	563	0	37	0.54	0	70.0	47.1	43.3	19.6	19.6
4-5 AM	937	0.0	62	0.0	1499	937	0	62	0.58	0	69.6	45.8	41.9	19.5	19.5
5-6 AM	1492	0.0	98	0.0	OFF	1492	0	98	0.00	0	68.9	68.9	68.9	19.3	19.3
6-7 AM	1741	0.0	116	0.0	OFF	1741	0	116	0.00	0	68.6	68.6	68.6	19.1	19.1
7-8 AM	1859	0.0	123	0.0	OFF	1859	0	123	0.00	0	68.4	68.4	68.4	19.1	19.1
8-9 AM	1812	0.0	120	0.0	OFF	1812	0	120	0.00	0	68.5	68.5	68.5	19.1	19.1
9-10 AM	1965	0.0	130	0.0	OFF	1965	0	130	0.00	0	68.3	68.3	68.3	19.1	19.1
10-11 AM	2288	0.0	151	0.0	OFF	2288	0	151	0.00	0	67.9	67.9	67.9	18.9	18.9
11A-NOON	2520	0.0	166	0.0	OFF	2520	0	166	0.00	0	67.6	67.6	67.6	18.8	18.8
NOON-1PM	2619	0.0	173	0.0	OFF	2619	0	173	0.00	0	67.5	67.5	67.5	18.8	18.8
1-2 PM	3033	0.0	201	0.0	OFF	3033	0	201	0.00	0	66.9	66.9	66.9	18.6	18.6
2-3 PM	3226	0.0	214	0.0	OFF	3226	0	214	0.00	0	66.7	66.7	66.7	18.6	18.6
3-4 PM	3232	0.0	214	0.0	OFF	3232	0	214	0.00	0	66.7	66.7	66.7	18.6	18.6
4-5 PM	3097	0.0	205	0.0	OFF	3097	0	205	0.00	0	66.9	66.9	66.9	18.6	18.6
5-6 PM	2970	0.0	197	0.0	OFF	2970	0	197	0.00	0	67.1	67.1	67.1	18.6	18.6
6-7 PM	2737	0.0	182	0.0	OFF	2737	0	182	0.00	0	67.3	67.3	67.3	18.8	18.8
7-8 PM	2291	0.0	151	0.0	1499	1723	568	719	9.20	218	67.9	9.1	31.3	18.9	16.6
8-9 PM	1919	0.0	128	0.0	1500	1463	456	584	8.58	196	68.4	9.4	30.8	19.1	17.3
9-10 PM	1799	0.0	119	0.0	1500	1488	312	431	8.03	181	68.5	9.8	30.8	19.1	18.1
10-11 PM	1351	0.0	90	0.0	1499	1337	14	104	4.94	113	69.1	13.6	32.4	19.3	19.6
11PM-MID	894	0.0	59	0.0	1500	893	0	60	0.58	0	69.6	45.9	42.0	19.5	19.5

"OFF" INDICATES NO ROAD WORK (ALL LANES OPEN TO TRAFFIC)

----- SITE BREAKDOWN DELAYS -----	
BREAKDOWN DURATION (MINS)	0
RANGE OF QUEUE DELAY - MIN	0.0
(VEH-H) MAX	0.0
RANGE OF DIVN DELAY - MIN	0.0
(VEH-H) MAX	0.0
AV BREAKDOWNS PER DAY	0.00
AV QUEUE DELAY/DAY (VEH-H)	0.0
AV DIVN DELAY/DAY (VEH-H)	0.0
AV TOTAL DELAY/DAY (VEH-H)	0.0

----- SITE ACCIDENT DELAYS -----	
ACCIDENT DURATION (MINS)	0
RANGE OF QUEUE DELAY - MIN	0.0
(VEH-H) MAX	0.0
RANGE OF DIVN DELAY - MIN	0.0
(VEH-H) MAX	0.0
AV ACCIDENTS PER DAY	0.00
AV QUEUE DELAY/DAY (VEH-H)	0.0
AV DIVN DELAY/DAY (VEH-H)	0.0
AV TOTAL DELAY/DAY (VEH-H)	0.0

AVERAGE ACCIDENT NUMBERS (PIA/DAY)	
MAIN ROUTE WITHOUT WORKS	0.0095
MAIN ROUTE WITH WORKS	0.0085
DIVERSION	0.0134

PIA: Personal Injury Accidents

IMPACTS ON ROAD USERS	
ROAD USER COSTS PER DAY (DOLLARS)	\$15,066
CONGESTED HOURS PER DAY*	0

*Delays Exceeding 15 Minutes

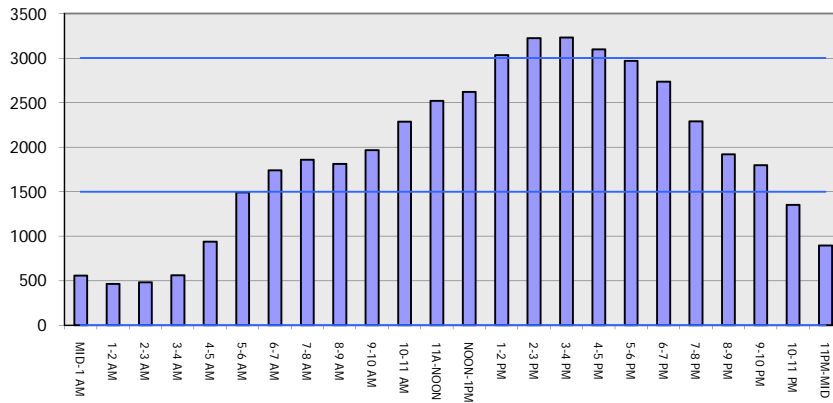
IH 94: CARMICHAEL RD TO STH 35 S (ST CROIX COUNTY)
NIGHTTIME 2 LANE CLOSURE
DIVERSION ROUTE: CARMICHAEL RD - STAGELINE RD - USH 12

AUGUST
 Analyzed for 2009
 Construction Season

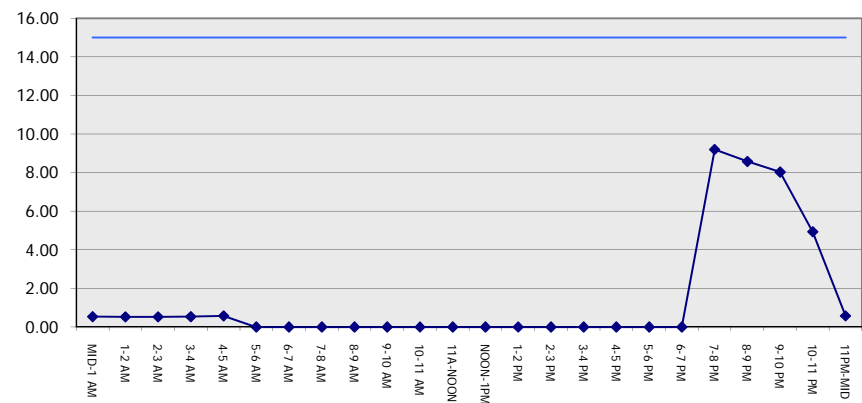
GRAPHICAL REPRESENTATION OF TRAFFIC MODEL INPUT AND OUTPUT

FRIDAY WESTBOUND DIRECTION

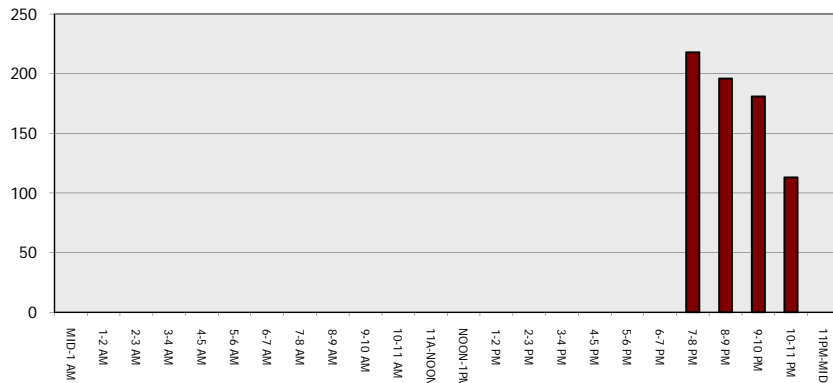
Main Route - Traffic Demand (Vehicles Per Hour)



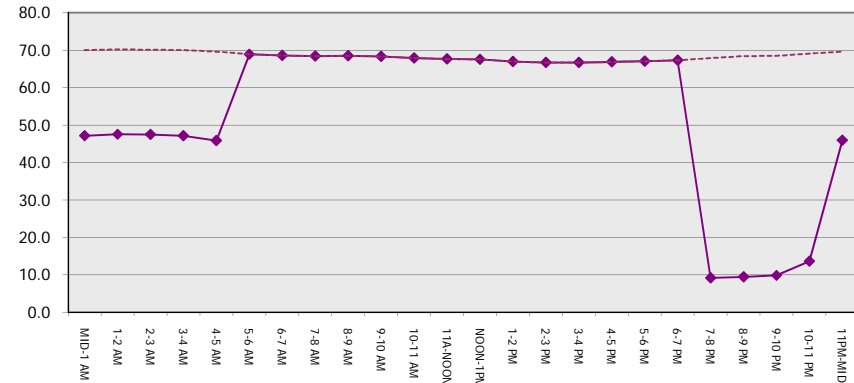
Main Route Average Delay Per Vehicle (Minutes)



Main Route - Average Queue Length (Vehicles)



Main Route - Average Speed (MPH)



IH 94: CARMICHAEL RD TO STH 35 S (ST CROIX COUNTY) NIGHTTIME 2 LANE CLOSURE DIVERSION ROUTE: CARMICHAEL RD - STAGELINE RD - USH 12	AUGUST
	Analyzed for 2009 Construction Season

SUMMARY OF TRAFFIC MODEL OUTPUT

FRIDAY EASTBOUND DIRECTION

TIME OF DAY	FLOWS AND CAPACITY IN VEH/HR								AVERAGE SPEEDS IN MPH							
	MAIN		DIVERSION		SITE CAPA CITY	FLOW MAIN ROUTE	FLOW DIVER -TING	TOTAL DIVN FLOW	AV.DEL PER VEH (MINS)	AVERAGE QUEUE (VEH)	MAIN ROUTE		SITE	ALTERNATE ROUTE		
	DEMAND FLOW	PCT HEAVY	NORMAL FLOW	PCT HEAVY							WITHOUT WORK ZN	WITH WORK ZN		WITHOUT WORK ZN	WITH WORK ZN	
MID-1 AM	629	0.0	42	0.0	1500	629	0	42	0.55	0	69.9	46.9	43.0	19.6	19.6	
1-2 AM	409	0.0	27	0.0	1500	409	0	27	0.52	0	70.2	47.7	43.8	19.7	19.7	
2-3 AM	358	0.0	24	0.0	1500	358	0	24	0.52	0	70.2	47.9	44.0	19.7	19.7	
3-4 AM	357	0.0	24	0.0	1500	357	0	24	0.52	0	70.2	47.9	44.0	19.7	19.7	
4-5 AM	451	0.0	30	0.0	1500	451	0	30	0.53	0	70.2	47.6	43.7	19.7	19.7	
5-6 AM	759	0.0	51	0.0	OFF	759	0	51	0.00	0	69.8	69.8	69.8	19.6	19.6	
6-7 AM	1267	0.0	84	0.0	OFF	1267	0	84	0.00	0	69.2	69.2	69.2	19.4	19.4	
7-8 AM	1860	0.0	123	0.0	OFF	1860	0	123	0.00	0	68.4	68.4	68.4	19.1	19.1	
8-9 AM	2217	0.0	147	0.0	OFF	2217	0	147	0.00	0	68.0	68.0	68.0	18.9	18.9	
9-10 AM	2834	0.0	188	0.0	OFF	2834	0	188	0.00	0	67.2	67.2	67.2	18.7	18.7	
10-11 AM	3485	0.0	230	0.0	OFF	3485	0	230	0.00	0	66.4	66.4	66.4	18.4	18.4	
11A-NOON	3534	0.0	235	0.0	OFF	3534	0	235	0.00	0	66.3	66.3	66.3	18.4	18.4	
NOON-1PM	3530	0.0	233	0.0	OFF	3530	0	233	0.00	0	66.3	66.3	66.3	18.4	18.4	
1-2 PM	4083	0.0	270	0.0	OFF	4083	0	270	0.00	0	63.0	63.0	63.0	18.2	18.2	
2-3 PM	4236	0.0	281	0.0	OFF	4236	0	281	0.00	0	61.9	61.9	61.9	18.1	18.1	
3-4 PM	4104	0.0	271	0.0	OFF	4104	0	271	0.00	0	62.8	62.8	62.8	18.2	18.2	
4-5 PM	4160	0.0	276	0.0	OFF	4160	0	276	0.00	0	62.4	62.4	62.4	18.1	18.1	
5-6 PM	3991	0.0	265	0.0	OFF	3991	0	265	0.00	0	63.6	63.6	63.6	18.3	18.3	
6-7 PM	3810	0.0	252	0.0	OFF	3810	0	252	0.00	0	64.8	64.8	64.8	18.3	18.3	
7-8 PM	2738	0.0	182	0.0	1499	1781	957	1139	11.44	279	67.3	8.0	30.8	18.8	14.2	
8-9 PM	1929	0.0	128	0.0	1500	1395	534	662	8.91	206	68.3	9.3	30.9	19.1	16.8	
9-10 PM	1428	0.0	94	0.0	1500	1399	29	123	6.24	137	68.9	11.6	31.0	19.3	19.7	
10-11 PM	1218	0.0	81	0.0	1500	1218	0	81	1.03	12	69.2	36.1	37.4	19.4	19.4	
11PM-MID	918	0.0	61	0.0	1500	918	0	61	0.58	0	69.6	45.9	42.0	19.5	19.5	

"OFF" INDICATES NO ROAD WORK (ALL LANES OPEN TO TRAFFIC)

----- SITE BREAKDOWN DELAYS -----	
BREAKDOWN DURATION (MINS)	0
RANGE OF QUEUE DELAY - MIN	0.0
(VEH-H) MAX	0.0
RANGE OF DIVN DELAY - MIN	0.0
(VEH-H) MAX	0.0
AV BREAKDOWNS PER DAY	0.00
AV QUEUE DELAY/DAY (VEH-H)	0.0
AV DIVN DELAY/DAY (VEH-H)	0.0
AV TOTAL DELAY/DAY (VEH-H)	0.0

----- SITE ACCIDENT DELAYS -----	
ACCIDENT DURATION (MINS)	0
RANGE OF QUEUE DELAY - MIN	0.0
(VEH-H) MAX	0.0
RANGE OF DIVN DELAY - MIN	0.0
(VEH-H) MAX	0.0
AV ACCIDENTS PER DAY	0.00
AV QUEUE DELAY/DAY (VEH-H)	0.0
AV DIVN DELAY/DAY (VEH-H)	0.0
AV TOTAL DELAY/DAY (VEH-H)	0.0

AVERAGE ACCIDENT NUMBERS (PIA/DAY)	
MAIN ROUTE WITHOUT WORKS	0.0112
MAIN ROUTE WITH WORKS	0.0103
DIVERSION	0.0156

PIA: Personal Injury Accidents

IMPACTS ON ROAD USERS	
ROAD USER COSTS PER DAY (DOLLARS)	\$14,953
CONGESTED HOURS PER DAY*	0

*Delays Exceeding 15 Minutes

IH 94: CARMICHAEL RD TO STH 35 S (ST CROIX COUNTY)
NIGHTTIME 2 LANE CLOSURE
DIVERSION ROUTE: CARMICHAEL RD - STAGELINE RD - USH 12

AUGUST
 Analyzed for 2009
 Construction Season

GRAPHICAL REPRESENTATION OF TRAFFIC MODEL INPUT AND OUTPUT
FRIDAY EASTBOUND DIRECTION

