

<b>IH 94: CARMICHAEL RD TO STH 35 S (ST CROIX COUNTY)</b> <b>NIGHTTIME 2 LANE CLOSURE</b> <b>DIVERSION ROUTE: CARMICHAEL RD - STAGELINE RD - USH 12</b>	<b>MAY</b>
	Analyzed for 2009 Construction Season

**SUMMARY OF TRAFFIC MODEL OUTPUT**

SUNDAY WESTBOUND DIRECTION

TIME OF DAY	FLOWS AND CAPACITY IN VEH/HR								AVERAGE SPEEDS IN MPH						
	MAIN ROUTE		ALTERNATE ROUTE		SITE CAPA CITY	FLOW MAIN ROUTE	FLOW DIVER -TING	TOTAL DIVN FLOW	AV.DEL PER VEH (MINS)	AVERAGE QUEUE (VEH)	MAIN ROUTE		ALTERNATE ROUTE		
	DEMAND FLOW	PCT HEAVY	NORMAL FLOW	PCT HEAVY							WITHOUT WORK ZN	WITH WORK ZN	SITE	WITHOUT WORK ZN	WITH WORK ZN
MID-1 AM	326	0.0	22	0.0	1500	326	0	22	0.51	0	70.2	48.0	44.2	19.7	19.7
1-2 AM	270	0.0	18	0.0	1500	270	0	18	0.51	0	70.2	48.2	44.4	19.7	19.7
2-3 AM	196	0.0	13	0.0	1500	196	0	13	0.50	0	70.2	48.5	44.7	19.8	19.8
3-4 AM	197	0.0	13	0.0	1500	197	0	13	0.50	0	70.2	48.5	44.7	19.8	19.8
4-5 AM	216	0.0	14	0.0	1500	216	0	14	0.50	0	70.2	48.4	44.6	19.8	19.8
5-6 AM	285	0.0	18	0.0	1500	285	0	18	0.51	0	70.2	48.2	44.3	19.7	19.7
6-7 AM	406	0.0	27	0.0	1500	406	0	27	0.52	0	70.2	47.7	43.8	19.7	19.7
7-8 AM	628	0.0	42	0.0	1500	628	0	42	0.55	0	69.9	46.9	43.0	19.6	19.6
8-9 AM	975	0.0	65	0.0	1500	975	0	65	0.58	0	69.6	45.7	41.8	19.5	19.5
9-10 AM	1365	0.0	91	0.0	OFF	1365	0	91	0.00	0	69.1	69.1	69.1	19.3	19.3
10-11 AM	1845	0.0	122	0.0	OFF	1845	0	122	0.00	0	68.4	68.4	68.4	19.1	19.1
11A-NOON	2284	0.0	151	0.0	OFF	2284	0	151	0.00	0	67.9	67.9	67.9	18.9	18.9
NOON-1PM	2470	0.0	163	0.0	OFF	2470	0	163	0.00	0	67.7	67.7	67.7	18.9	18.9
1-2 PM	2739	0.0	182	0.0	OFF	2739	0	182	0.00	0	67.3	67.3	67.3	18.8	18.8
2-3 PM	3145	0.0	209	0.0	OFF	3145	0	209	0.00	0	66.8	66.8	66.8	18.6	18.6
3-4 PM	3477	0.0	230	0.0	OFF	3477	0	230	0.00	0	66.4	66.4	66.4	18.4	18.4
4-5 PM	3570	0.0	237	0.0	OFF	3570	0	237	0.00	0	66.3	66.3	66.3	18.4	18.4
5-6 PM	3500	0.0	232	0.0	OFF	3500	0	232	0.00	0	66.4	66.4	66.4	18.4	18.4
6-7 PM	3174	0.0	210	0.0	OFF	3174	0	210	0.00	0	66.8	66.8	66.8	18.6	18.6
7-8 PM	2768	0.0	184	0.0	1499	1817	951	1135	11.48	283	67.3	8.0	30.8	18.8	14.2
8-9 PM	2409	0.0	160	0.0	1500	1421	988	1148	11.33	269	67.8	8.0	30.8	18.9	14.1
9-10 PM	1860	0.0	123	0.0	1500	1436	425	548	8.46	193	68.4	9.5	30.8	19.1	17.5
10-11 PM	1385	0.0	92	0.0	1500	1358	26	118	5.57	126	69.0	12.5	32.0	19.3	19.6
11PM-MID	790	0.0	52	0.0	1500	790	0	52	0.59	0	69.7	45.7	42.4	19.6	19.6

"OFF" INDICATES NO ROAD WORK (ALL LANES OPEN TO TRAFFIC)

*----- SITE BREAKDOWN DELAYS -----*	
BREAKDOWN DURATION (MINS)	0
RANGE OF QUEUE DELAY - MIN	0.0
(VEH-H) MAX	0.0
RANGE OF DIVN DELAY - MIN	0.0
(VEH-H) MAX	0.0
AV BREAKDOWNS PER DAY	0.00
AV QUEUE DELAY/DAY (VEH-H)	0.0
AV DIVN DELAY/DAY (VEH-H)	0.0
AV TOTAL DELAY/DAY (VEH-H)	0.0

*----- SITE ACCIDENT DELAYS -----*	
ACCIDENT DURATION (MINS)	0
RANGE OF QUEUE DELAY - MIN	0.0
(VEH-H) MAX	0.0
RANGE OF DIVN DELAY - MIN	0.0
(VEH-H) MAX	0.0
AV ACCIDENTS PER DAY	0.00
AV QUEUE DELAY/DAY (VEH-H)	0.0
AV DIVN DELAY/DAY (VEH-H)	0.0
AV TOTAL DELAY/DAY (VEH-H)	0.0

AVERAGE ACCIDENT NUMBERS (PIA/DAY)	
MAIN ROUTE WITHOUT WORKS	0.0083
MAIN ROUTE WITH WORKS	0.0071
DIVERSION	0.0154

PIA: Personal Injury Accidents

IMPACTS ON ROAD USERS	
ROAD USER COSTS PER DAY ( DOLLARS)	\$23,855
CONGESTED HOURS PER DAY*	0

\*Delays Exceeding 15 Minutes

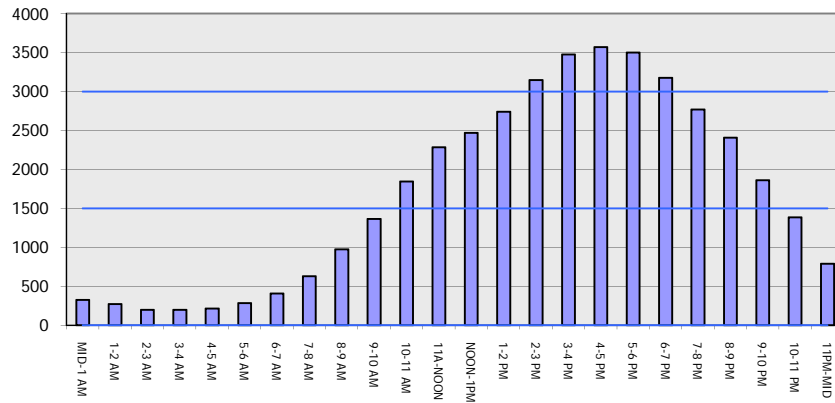
**IH 94: CARMICHAEL RD TO STH 35 S (ST CROIX COUNTY)**  
**NIGHTTIME 2 LANE CLOSURE**  
**DIVERSION ROUTE: CARMICHAEL RD - STAGELINE RD - USH 12**

**MAY**  
 Analyzed for 2009  
 Construction Season

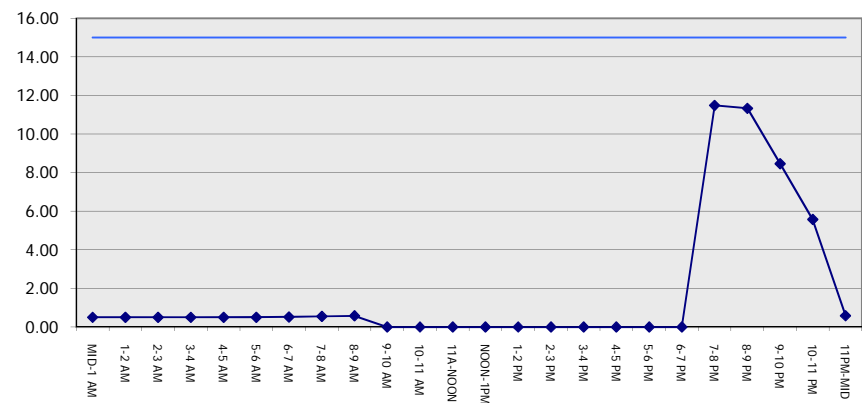
**GRAPHICAL REPRESENTATION OF TRAFFIC MODEL INPUT AND OUTPUT**

**SUNDAY WESTBOUND DIRECTION**

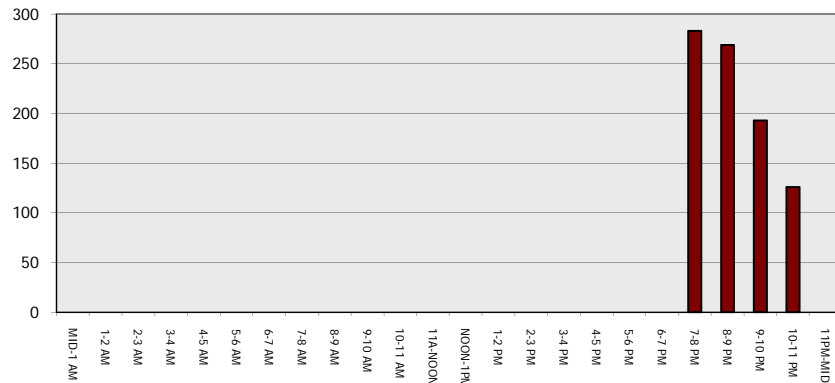
**Main Route - Traffic Demand (Vehicles Per Hour)**



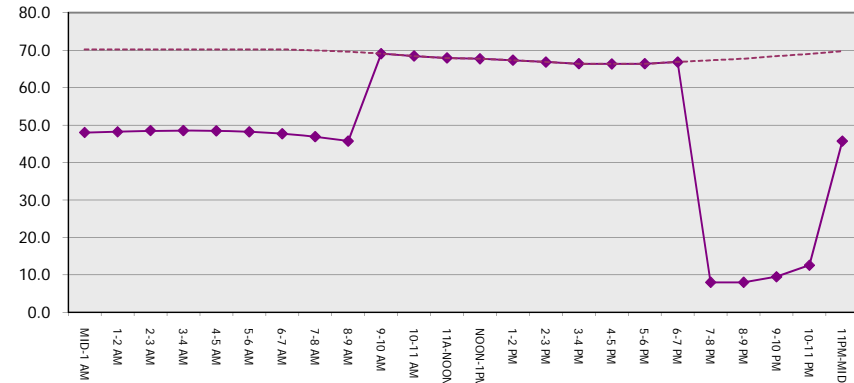
**Main Route Average Delay Per Vehicle (Minutes)**



**Main Route - Average Queue Length (Vehicles)**



**Main Route - Average Speed (MPH)**



<b>IH 94: CARMICHAEL RD TO STH 35 S (ST CROIX COUNTY)</b> <b>NIGHTTIME 2 LANE CLOSURE</b> <b>DIVERSION ROUTE: CARMICHAEL RD - STAGELINE RD - USH 12</b>	<b>MAY</b>
	Analyzed for 2009 Construction Season

**SUMMARY OF TRAFFIC MODEL OUTPUT**

SUNDAY EASTBOUND DIRECTION

TIME OF DAY	FLOWS AND CAPACITY IN VEH/HR								AVERAGE SPEEDS IN MPH						
	MAIN		DIVERSION		SITE CAPA CITY	FLOW MAIN ROUTE	FLOW DIVER -TING	TOTAL DIVN FLOW	AV.DEL PER VEH (MINS)	AVERAGE QUEUE (VEH)	MAIN ROUTE		SITE	ALTERNATE ROUTE	
	DEMAND FLOW	PCT HEAVY	NORMAL FLOW	PCT HEAVY							WITHOUT WORK ZN	WITH WORK ZN		WITHOUT WORK ZN	WITH WORK ZN
MID-1 AM	318	0.0	21	0.0	1500	318	0	21	0.51	0	70.2	48.1	44.2	19.7	19.7
1-2 AM	206	0.0	14	0.0	1500	206	0	14	0.50	0	70.2	48.4	44.6	19.8	19.8
2-3 AM	168	0.0	11	0.0	1500	168	0	11	0.49	0	70.2	48.6	44.8	19.8	19.8
3-4 AM	154	0.0	10	0.0	1500	154	0	10	0.49	0	70.2	48.6	44.8	19.8	19.8
4-5 AM	190	0.0	13	0.0	1500	190	0	13	0.50	0	70.2	48.5	44.7	19.8	19.8
5-6 AM	293	0.0	19	0.0	1500	293	0	19	0.51	0	70.2	48.1	44.3	19.7	19.7
6-7 AM	537	0.0	36	0.0	1500	537	0	36	0.54	0	70.0	47.3	43.3	19.6	19.6
7-8 AM	856	0.0	56	0.0	1500	856	0	56	0.57	0	69.7	46.1	42.2	19.5	19.5
8-9 AM	1285	0.0	85	0.0	1499	1285	0	85	0.80	0	69.1	40.4	36.3	19.3	19.3
9-10 AM	1859	0.0	123	0.0	OFF	1859	0	123	0.00	0	68.4	68.4	68.4	19.1	19.1
10-11 AM	2411	0.0	160	0.0	OFF	2411	0	160	0.00	0	67.8	67.8	67.8	18.9	18.9
11A-NOON	2566	0.0	170	0.0	OFF	2566	0	170	0.00	0	67.6	67.6	67.6	18.8	18.8
NOON-1PM	2650	0.0	175	0.0	OFF	2650	0	175	0.00	0	67.4	67.4	67.4	18.8	18.8
1-2 PM	2669	0.0	177	0.0	OFF	2669	0	177	0.00	0	67.4	67.4	67.4	18.8	18.8
2-3 PM	2619	0.0	173	0.0	OFF	2619	0	173	0.00	0	67.5	67.5	67.5	18.8	18.8
3-4 PM	2574	0.0	171	0.0	OFF	2574	0	171	0.00	0	67.6	67.6	67.6	18.8	18.8
4-5 PM	2540	0.0	169	0.0	OFF	2540	0	169	0.00	0	67.6	67.6	67.6	18.8	18.8
5-6 PM	2302	0.0	153	0.0	OFF	2302	0	153	0.00	0	67.9	67.9	67.9	18.9	18.9
6-7 PM	1957	0.0	130	0.0	OFF	1957	0	130	0.00	0	68.3	68.3	68.3	19.1	19.1
7-8 PM	1640	0.0	108	0.0	1499	1640	0	108	4.32	91	68.7	14.8	30.8	19.2	19.4
8-9 PM	1266	0.0	84	0.0	1499	1266	0	84	2.10	58	69.2	24.6	34.8	19.4	19.5
9-10 PM	950	0.0	63	0.0	1500	950	0	63	0.58	0	69.6	45.8	41.9	19.5	19.5
10-11 PM	671	0.0	44	0.0	1500	671	0	44	0.55	0	69.9	46.8	42.8	19.6	19.6
11PM-MID	543	0.0	36	0.0	1500	543	0	36	0.54	0	70.0	47.2	43.3	19.6	19.6

"OFF" INDICATES NO ROAD WORK (ALL LANES OPEN TO TRAFFIC)

*----- SITE BREAKDOWN DELAYS -----*	
BREAKDOWN DURATION (MINS)	0
RANGE OF QUEUE DELAY - MIN	0.0
(VEH-H) MAX	0.0
RANGE OF DIVN DELAY - MIN	0.0
(VEH-H) MAX	0.0
AV BREAKDOWNS PER DAY	0.00
AV QUEUE DELAY/DAY (VEH-H)	0.0
AV DIVN DELAY/DAY (VEH-H)	0.0
AV TOTAL DELAY/DAY (VEH-H)	0.0

*----- SITE ACCIDENT DELAYS -----*	
ACCIDENT DURATION (MINS)	0
RANGE OF QUEUE DELAY - MIN	0.0
(VEH-H) MAX	0.0
RANGE OF DIVN DELAY - MIN	0.0
(VEH-H) MAX	0.0
AV ACCIDENTS PER DAY	0.00
AV QUEUE DELAY/DAY (VEH-H)	0.0
AV DIVN DELAY/DAY (VEH-H)	0.0
AV TOTAL DELAY/DAY (VEH-H)	0.0

AVERAGE ACCIDENT NUMBERS (PIA/DAY)	
MAIN ROUTE WITHOUT WORKS	0.0069
MAIN ROUTE WITH WORKS	0.0063
DIVERSION	0.0067

PIA: Personal Injury Accidents

IMPACTS ON ROAD USERS	
ROAD USER COSTS PER DAY ( DOLLARS)	\$3,775
CONGESTED HOURS PER DAY*	0

\*Delays Exceeding 15 Minutes

**IH 94: CARMICHAEL RD TO STH 35 S (ST CROIX COUNTY)**  
**NIGHTTIME 2 LANE CLOSURE**  
**DIVERSION ROUTE: CARMICHAEL RD - STAGELINE RD - USH 12**

**MAY**  
 Analyzed for 2009  
 Construction Season

**GRAPHICAL REPRESENTATION OF TRAFFIC MODEL INPUT AND OUTPUT**  
**SUNDAY EASTBOUND DIRECTION**

