

IH 94: CARMICHAEL RD TO STH 35 S (ST CROIX COUNTY) NIGHTTIME 2 LANE CLOSURE DIVERSION ROUTE: CARMICHAEL RD - STAGELINE RD - USH 12	MAY
	Analyzed for 2009 Construction Season

SUMMARY OF TRAFFIC MODEL OUTPUT

FRIDAY WESTBOUND DIRECTION

TIME OF DAY	FLOWS AND CAPACITY IN VEH/HR										AVERAGE SPEEDS IN MPH				
	MAIN ROUTE		ALTERNATE ROUTE		SITE CAPA CITY	FLOW MAIN ROUTE	FLOW DIVER -TING	TOTAL DIVN FLOW	AV.DEL PER VEH (MINS)	AVERAGE QUEUE (VEH)	MAIN ROUTE		ALTERNATE ROUTE		
	DEMAND FLOW	PCT HEAVY	NORMAL FLOW	PCT HEAVY							WITHOUT WORK ZN	WITH WORK ZN	SITE	WITHOUT WORK ZN	WITH WORK ZN
MID-1 AM	526	0.0	35	0.0	1500	526	0	35	0.54	0	70.0	47.3	43.4	19.7	19.7
1-2 AM	490	0.0	32	0.0	1500	490	0	32	0.53	0	70.1	47.4	43.5	19.7	19.7
2-3 AM	476	0.0	31	0.0	1500	476	0	31	0.53	0	70.1	47.4	43.6	19.7	19.7
3-4 AM	540	0.0	36	0.0	1500	540	0	36	0.54	0	70.0	47.3	43.3	19.6	19.6
4-5 AM	884	0.0	58	0.0	1500	884	0	58	0.57	0	69.6	46.0	42.1	19.5	19.5
5-6 AM	1518	0.0	101	0.0	OFF	1518	0	101	0.00	0	68.9	68.9	68.9	19.3	19.3
6-7 AM	2030	0.0	134	0.0	OFF	2030	0	134	0.00	0	68.2	68.2	68.2	19.1	19.1
7-8 AM	2017	0.0	134	0.0	OFF	2017	0	134	0.00	0	68.2	68.2	68.2	19.1	19.1
8-9 AM	1850	0.0	122	0.0	OFF	1850	0	122	0.00	0	68.4	68.4	68.4	19.1	19.1
9-10 AM	1913	0.0	127	0.0	OFF	1913	0	127	0.00	0	68.4	68.4	68.4	19.1	19.1
10-11 AM	1985	0.0	132	0.0	OFF	1985	0	132	0.00	0	68.2	68.2	68.2	19.1	19.1
11A-NOON	2164	0.0	144	0.0	OFF	2164	0	144	0.00	0	68.1	68.1	68.1	19.0	19.0
NOON-1PM	2422	0.0	160	0.0	OFF	2422	0	160	0.00	0	67.8	67.8	67.8	18.9	18.9
1-2 PM	2706	0.0	180	0.0	OFF	2706	0	180	0.00	0	67.4	67.4	67.4	18.8	18.8
2-3 PM	2791	0.0	185	0.0	OFF	2791	0	185	0.00	0	67.3	67.3	67.3	18.8	18.8
3-4 PM	2960	0.0	196	0.0	OFF	2960	0	196	0.00	0	67.1	67.1	67.1	18.6	18.6
4-5 PM	2992	0.0	198	0.0	OFF	2992	0	198	0.00	0	67.0	67.0	67.0	18.6	18.6
5-6 PM	2864	0.0	189	0.0	OFF	2864	0	189	0.00	0	67.2	67.2	67.2	18.7	18.7
6-7 PM	2495	0.0	166	0.0	OFF	2495	0	166	0.00	0	67.6	67.6	67.6	18.8	18.8
7-8 PM	2070	0.0	137	0.0	1499	1698	372	510	8.36	196	68.2	9.6	31.6	19.0	17.8
8-9 PM	1885	0.0	125	0.0	1500	1485	400	526	8.37	190	68.4	9.6	30.8	19.1	17.6
9-10 PM	1602	0.0	106	0.0	1500	1474	128	234	7.42	165	68.7	10.3	30.8	19.2	19.3
10-11 PM	1282	0.0	85	0.0	1499	1282	0	85	2.72	77	69.1	20.9	34.1	19.3	19.6
11PM-MID	836	0.0	55	0.0	1500	836	0	55	0.57	0	69.7	46.2	42.3	19.5	19.5

"OFF" INDICATES NO ROAD WORK (ALL LANES OPEN TO TRAFFIC)

----- SITE BREAKDOWN DELAYS -----	
BREAKDOWN DURATION (MINS)	0
RANGE OF QUEUE DELAY - MIN	0.0
(VEH-H) MAX	0.0
RANGE OF DIVN DELAY - MIN	0.0
(VEH-H) MAX	0.0
AV BREAKDOWNS PER DAY	0.00
AV QUEUE DELAY/DAY (VEH-H)	0.0
AV DIVN DELAY/DAY (VEH-H)	0.0
AV TOTAL DELAY/DAY (VEH-H)	0.0

----- SITE ACCIDENT DELAYS -----	
ACCIDENT DURATION (MINS)	0
RANGE OF QUEUE DELAY - MIN	0.0
(VEH-H) MAX	0.0
RANGE OF DIVN DELAY - MIN	0.0
(VEH-H) MAX	0.0
AV ACCIDENTS PER DAY	0.00
AV QUEUE DELAY/DAY (VEH-H)	0.0
AV DIVN DELAY/DAY (VEH-H)	0.0
AV TOTAL DELAY/DAY (VEH-H)	0.0

AVERAGE ACCIDENT NUMBERS (PIA/DAY)	
MAIN ROUTE WITHOUT WORKS	0.0089
MAIN ROUTE WITH WORKS	0.0081
DIVERSION	0.0115

PIA: Personal Injury Accidents

IMPACTS ON ROAD USERS	
ROAD USER COSTS PER DAY (DOLLARS)	\$12,653
CONGESTED HOURS PER DAY*	0

*Delays Exceeding 15 Minutes

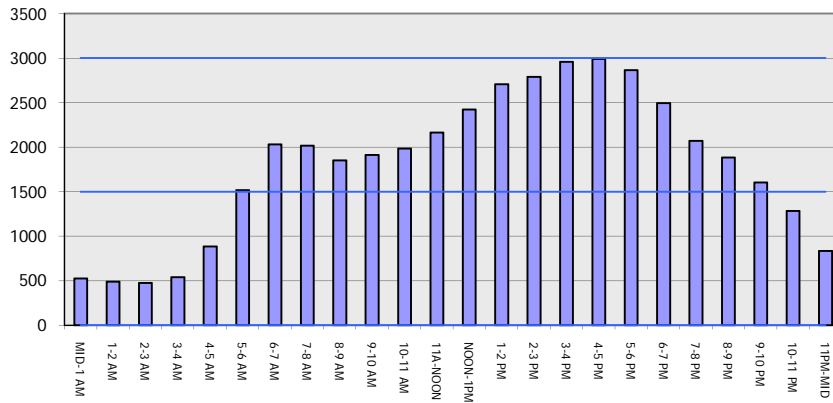
IH 94: CARMICHAEL RD TO STH 35 S (ST CROIX COUNTY)
NIGHTTIME 2 LANE CLOSURE
DIVERSION ROUTE: CARMICHAEL RD - STAGELINE RD - USH 12

MAY
 Analyzed for 2009
 Construction Season

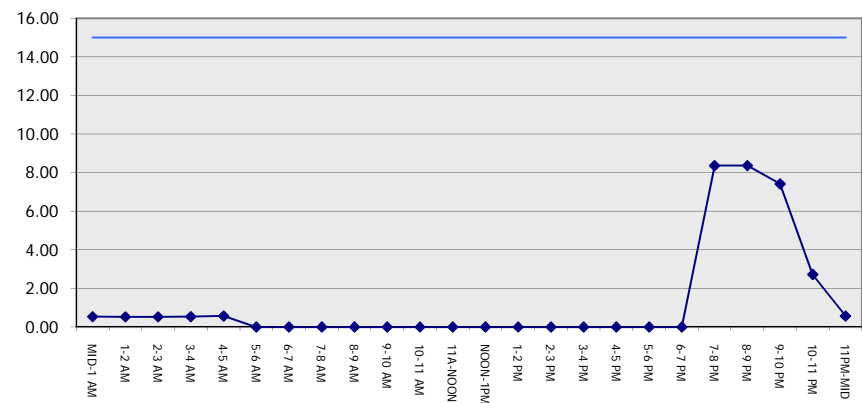
GRAPHICAL REPRESENTATION OF TRAFFIC MODEL INPUT AND OUTPUT

FRIDAY WESTBOUND DIRECTION

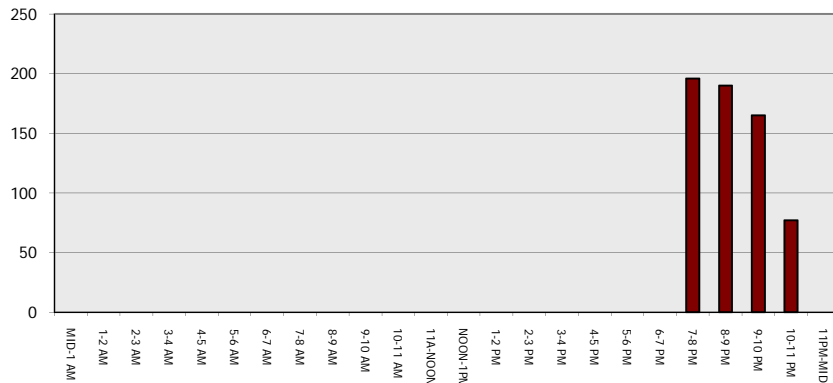
Main Route - Traffic Demand (Vehicles Per Hour)



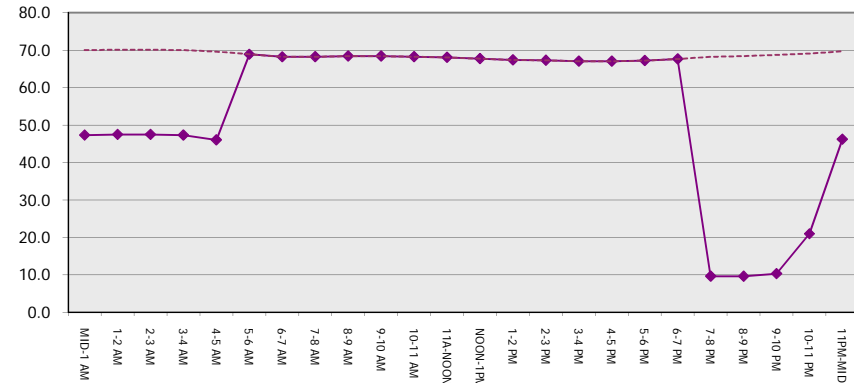
Main Route Average Delay Per Vehicle (Minutes)



Main Route - Average Queue Length (Vehicles)



Main Route - Average Speed (MPH)



IH 94: CARMICHAEL RD TO STH 35 S (ST CROIX COUNTY) NIGHTTIME 2 LANE CLOSURE DIVERSION ROUTE: CARMICHAEL RD - STAGELINE RD - USH 12	MAY
	Analyzed for 2009 Construction Season

SUMMARY OF TRAFFIC MODEL OUTPUT

FRIDAY EASTBOUND DIRECTION

TIME OF DAY	FLOWS AND CAPACITY IN VEH/HR								AVERAGE SPEEDS IN MPH						
	MAIN		DIVERSION		SITE CAPA CITY	FLOW MAIN ROUTE	FLOW DIVER -TING	TOTAL DIVN FLOW	AV.DEL PER VEH (MINS)	AVERAGE QUEUE (VEH)	MAIN ROUTE		SITE	ALTERNATE ROUTE	
	DEMAND FLOW	PCT HEAVY	NORMAL FLOW	PCT HEAVY							WITHOUT WORK ZN	WITH WORK ZN		WITHOUT WORK ZN	WITH WORK ZN
MID-1 AM	508	0.0	34	0.0	1500	508	0	34	0.53	0	70.1	47.3	43.5	19.7	19.7
1-2 AM	329	0.0	22	0.0	1500	329	0	22	0.51	0	70.2	48.0	44.2	19.7	19.7
2-3 AM	322	0.0	22	0.0	1500	322	0	22	0.51	0	70.2	48.0	44.2	19.7	19.7
3-4 AM	313	0.0	21	0.0	1500	313	0	21	0.51	0	70.2	48.1	44.2	19.7	19.7
4-5 AM	466	0.0	31	0.0	1500	466	0	31	0.53	0	70.2	47.5	43.7	19.7	19.7
5-6 AM	723	0.0	48	0.0	OFF	723	0	48	0.00	0	69.9	69.9	69.9	19.6	19.6
6-7 AM	1221	0.0	81	0.0	OFF	1221	0	81	0.00	0	69.2	69.2	69.2	19.4	19.4
7-8 AM	1829	0.0	121	0.0	OFF	1829	0	121	0.00	0	68.4	68.4	68.4	19.1	19.1
8-9 AM	2064	0.0	136	0.0	OFF	2064	0	136	0.00	0	68.2	68.2	68.2	19.0	19.0
9-10 AM	2575	0.0	171	0.0	OFF	2575	0	171	0.00	0	67.6	67.6	67.6	18.8	18.8
10-11 AM	2851	0.0	189	0.0	OFF	2851	0	189	0.00	0	67.2	67.2	67.2	18.7	18.7
11A-NOON	2971	0.0	197	0.0	OFF	2971	0	197	0.00	0	67.1	67.1	67.1	18.6	18.6
NOON-1PM	3155	0.0	209	0.0	OFF	3155	0	209	0.00	0	66.8	66.8	66.8	18.6	18.6
1-2 PM	3629	0.0	240	0.0	OFF	3629	0	240	0.00	0	66.1	66.1	66.1	18.4	18.4
2-3 PM	3657	0.0	242	0.0	OFF	3657	0	242	0.00	0	65.9	65.9	65.9	18.4	18.4
3-4 PM	4020	0.0	266	0.0	OFF	4020	0	266	0.00	0	63.4	63.4	63.4	18.2	18.2
4-5 PM	4097	0.0	272	0.0	OFF	4097	0	272	0.00	0	62.8	62.8	62.8	18.2	18.2
5-6 PM	3934	0.0	261	0.0	OFF	3934	0	261	0.00	0	64.0	64.0	64.0	18.3	18.3
6-7 PM	3774	0.0	250	0.0	OFF	3774	0	250	0.00	0	65.1	65.1	65.1	18.3	18.3
7-8 PM	2625	0.0	174	0.0	1499	1755	870	1044	10.84	262	67.4	8.3	31.2	18.8	14.7
8-9 PM	1759	0.0	117	0.0	1500	1406	353	470	8.19	187	68.6	9.7	31.0	19.1	17.9
9-10 PM	1299	0.0	87	0.0	1499	1299	0	87	3.13	85	69.1	19.0	33.5	19.3	19.6
10-11 PM	1068	0.0	70	0.0	1500	1068	0	70	0.59	0	69.4	45.4	41.4	19.4	19.4
11PM-MID	802	0.0	53	0.0	1500	802	0	53	0.57	0	69.7	46.3	42.4	19.6	19.6

"OFF" INDICATES NO ROAD WORK (ALL LANES OPEN TO TRAFFIC)

----- SITE BREAKDOWN DELAYS -----	
BREAKDOWN DURATION (MINS)	0
RANGE OF QUEUE DELAY - MIN	0.0
(VEH-H) MAX	0.0
RANGE OF DIVN DELAY - MIN	0.0
(VEH-H) MAX	0.0
AV BREAKDOWNS PER DAY	0.00
AV QUEUE DELAY/DAY (VEH-H)	0.0
AV DIVN DELAY/DAY (VEH-H)	0.0
AV TOTAL DELAY/DAY (VEH-H)	0.0

----- SITE ACCIDENT DELAYS -----	
ACCIDENT DURATION (MINS)	0
RANGE OF QUEUE DELAY - MIN	0.0
(VEH-H) MAX	0.0
RANGE OF DIVN DELAY - MIN	0.0
(VEH-H) MAX	0.0
AV ACCIDENTS PER DAY	0.00
AV QUEUE DELAY/DAY (VEH-H)	0.0
AV DIVN DELAY/DAY (VEH-H)	0.0
AV TOTAL DELAY/DAY (VEH-H)	0.0

AVERAGE ACCIDENT NUMBERS (PIA/DAY)	
MAIN ROUTE WITHOUT WORKS	0.0103
MAIN ROUTE WITH WORKS	0.0095
DIVERSION	0.0138

PIA: Personal Injury Accidents

IMPACTS ON ROAD USERS	
ROAD USER COSTS PER DAY (DOLLARS)	\$12,277
CONGESTED HOURS PER DAY*	0

*Delays Exceeding 15 Minutes

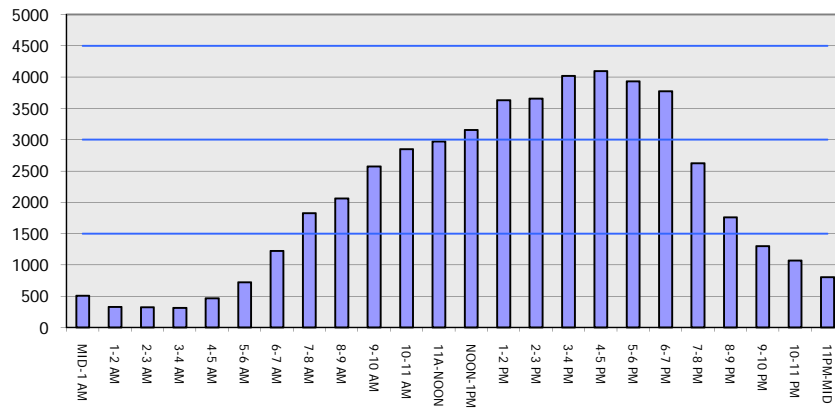
IH 94: CARMICHAEL RD TO STH 35 S (ST CROIX COUNTY)
NIGHTTIME 2 LANE CLOSURE
DIVERSION ROUTE: CARMICHAEL RD - STAGELINE RD - USH 12

MAY
 Analyzed for 2009
 Construction Season

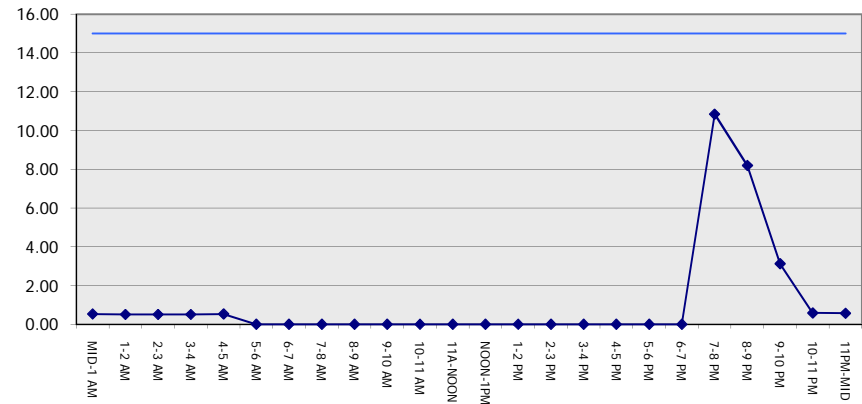
GRAPHICAL REPRESENTATION OF TRAFFIC MODEL INPUT AND OUTPUT

FRIDAY EASTBOUND DIRECTION

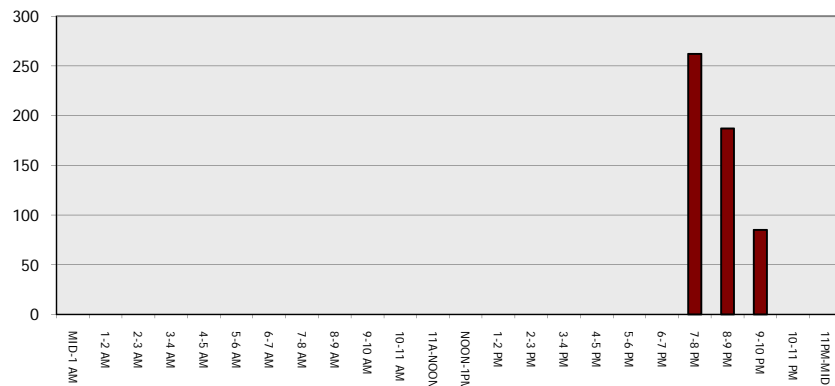
Main Route - Traffic Demand (Vehicles Per Hour)



Main Route Average Delay Per Vehicle (Minutes)



Main Route - Average Queue Length (Vehicles)



Main Route - Average Speed (MPH)

