

IH 94: MN 96 TO STH 35 N NIGHTTIME CLOSURE NO DIVERSION ROUTE (MAX QUEUE METHOD)	OCTOBER
	Analyzed for 2009 Construction Season

SUMMARY OF TRAFFIC MODEL OUTPUT

SUNDAY WESTBOUND DIRECTION

TIME OF DAY	FLOWS AND CAPACITY IN VEH/HR						AVERAGE SPEEDS IN MPH				
	MAIN ROUTE		SITE CAPA CITY	FLOW		AV.DEL PER VEH (MINS)	AVERAGE QUEUE (VEH)	MAIN ROUTE		SITE	
	DEMAND FLOW	PCT HEAVY		MAIN ROUTE	'DIVER TED'			WITHOUT WORK ZONE	WITH WORK ZONE		
MID-1 AM	497	0.0	3000	497	0	0.18	0	70.1	57.9	49.7	
1-2 AM	379	0.0	3000	379	0	0.18	0	70.2	57.9	49.7	
2-3 AM	326	0.0	3000	326	0	0.18	0	70.2	57.9	49.7	
3-4 AM	315	0.0	3000	315	0	0.18	0	70.2	57.9	49.7	
4-5 AM	316	0.0	3000	316	0	0.18	0	70.2	57.9	49.7	
5-6 AM	407	0.0	3000	407	0	0.18	0	70.2	57.9	49.7	
6-7 AM	533	0.0	3000	533	0	0.18	0	70.0	57.8	49.7	
7-8 AM	757	0.0	3000	757	0	0.18	0	69.8	57.8	49.7	
8-9 AM	1183	0.0	3000	1183	0	0.18	0	69.2	57.6	49.7	
9-10 AM	1895	0.0	OFF	1895	0	0.00	0	68.4	68.4	68.4	
10-11 AM	2684	0.0	OFF	2684	0	0.00	0	67.4	67.4	67.4	
11AM-NOON	3505	0.0	OFF	3505	0	0.00	0	66.4	66.4	66.4	
NOON-1PM	3921	0.0	OFF	3921	0	0.00	0	64.1	64.1	64.1	
1-2 PM	4503	0.0	OFF	4503	0	0.00	0	60.1	60.1	60.1	
2-3 PM	5120	0.0	OFF	5120	0	0.00	0	55.9	55.9	55.9	
3-4 PM	5705	0.0	OFF	5705	0	0.00	0	51.9	51.9	51.9	
4-5 PM	5894	0.0	OFF	5894	0	0.00	0	50.6	50.6	50.6	
5-6 PM	5620	0.0	OFF	5620	0	0.00	0	52.5	52.5	52.5	
6-7 PM	4940	0.0	OFF	4940	0	0.00	0	57.1	57.1	57.1	
7-8 PM	4540	0.0	2999	4540	0	13.68	808	59.9	9.1	37.3	
8-9 PM	3705	0.0	3000	3705	0	35.64+	1951	65.5	7.2	37.3	
9-10 PM	2664	0.0	3000	2664	0	39.19+	2138	67.4	7.1	37.3	
10-11 PM	1764	0.0	3000	1764	0	24.49	1342	68.6	7.7	38.0	
11PM-MID	1039	0.0	3000	1039	0	0.70	126	69.4	41.0	49.7	

"OFF" INDICATES NO ROAD WORK (ALL LANES OPEN TO TRAFFIC) + INDICATES QUEUEING EXCEEDS USER-SPECIFIED MAXIMUM LIMIT

----- SITE BREAKDOWN DELAYS -----	
BREAKDOWN DURATION (MINS)	0
RANGE OF QUEUE DELAY - MIN (VEH-H) MAX	0.0
AV BREAKDOWNS PER DAY	0.00
AV QUEUE DELAY/DAY (VEH-H)	0.0
AV TOTAL DELAY/DAY (VEH-H)	0.0

----- SITE ACCIDENT DELAYS -----	
BREAKDOWN DURATION (MINS)	0
RANGE OF QUEUE DELAY - MIN (VEH-H) MAX	0
AV BREAKDOWNS PER DAY	0
AV QUEUE DELAY/DAY (VEH-H)	0
AV TOTAL DELAY/DAY (VEH-H)	0

AVERAGE ACCIDENT NUMBERS (PIA/DAY)	
MAIN ROUTE WITHOUT WORKS	0.0099
MAIN ROUTE WITH WORKS	0.0079
'DIVERSION'	0.0000
PIA: Personal Injury Accidents	
IMPACTS ON ROAD USERS	
ROAD USER COSTS PER DAY	\$92,109
CONGESTED HOURS PER DAY*	2

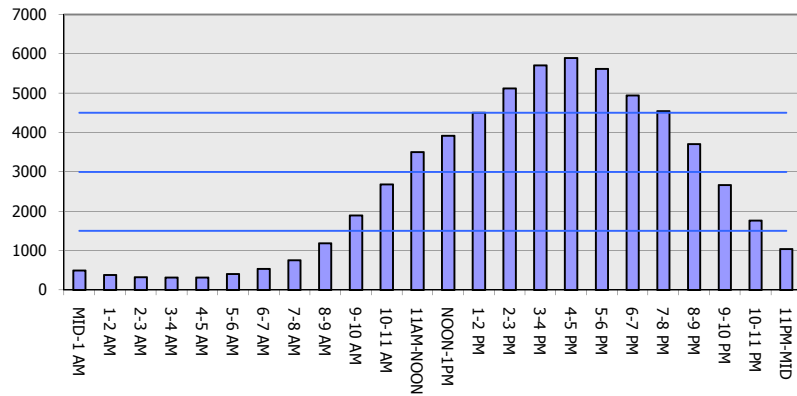
*Delays Exceeding User-Specified Maximum

**IH 94: MN 96 TO STH 35 N
NIGHTTIME CLOSURE
NO DIVERSION ROUTE (MAX QUEUE METHOD)**

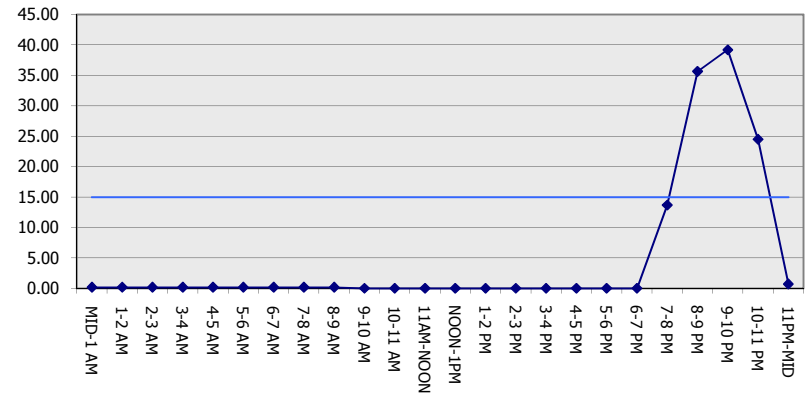
OCTOBER
Analyzed for 2009
Construction Season

GRAPHICAL REPRESENTATION OF TRAFFIC MODEL INPUT AND OUTPUT
SUNDAY WESTBOUND DIRECTION

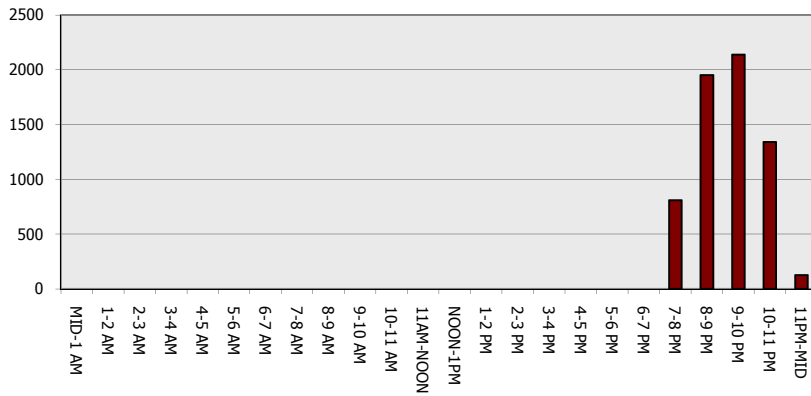
Main Route - Traffic Demand (Vehicles Per Hour)



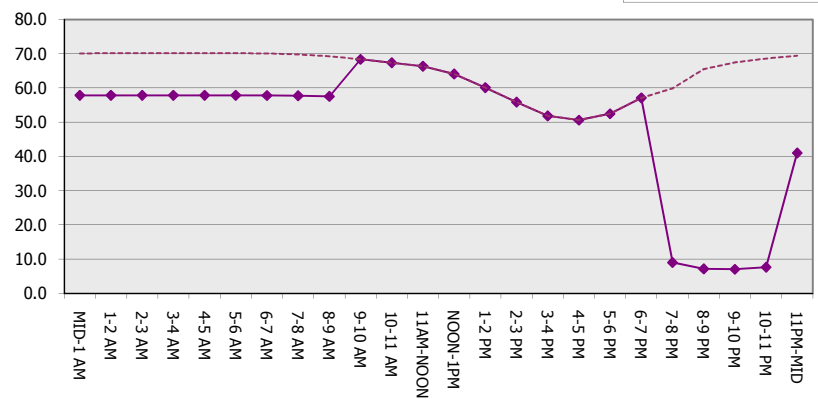
Main Route Average Delay Per Vehicle (Minutes)



Main Route - Average Queue Length (Vehicles)



Main Route - Average Speed (MPH)



IH 94: MN 96 TO STH 35 N NIGHTTIME CLOSURE NO DIVERSION ROUTE (MAX QUEUE METHOD)	OCTOBER
	Analyzed for 2009 Construction Season

SUMMARY OF TRAFFIC MODEL OUTPUT

SUNDAY EASTBOUND DIRECTION

TIME OF DAY	FLOWS AND CAPACITY IN VEH/HR						AVERAGE SPEEDS IN MPH			
	MAIN ROUTE		SITE CAPA CITY	FLOW		AV.DEL PER VEH (MINS)	AVERAGE QUEUE (VEH)	MAIN ROUTE		SITE
	DEMAND FLOW	PCT HEAVY		MAIN ROUTE	'DIVER TED'			WITHOUT WORK ZONE	WITH WORK ZONE	
MID-1 AM	573	0.0	3000	573	0	0.18	0	70.0	57.8	49.7
1-2 AM	358	0.0	3000	358	0	0.18	0	70.2	57.9	49.7
2-3 AM	298	0.0	3000	298	0	0.18	0	70.2	57.9	49.7
3-4 AM	247	0.0	3000	247	0	0.18	0	70.2	57.9	49.7
4-5 AM	307	0.0	3000	307	0	0.18	0	70.2	57.9	49.7
5-6 AM	424	0.0	3000	424	0	0.18	0	70.2	57.9	49.7
6-7 AM	735	0.0	3000	735	0	0.18	0	69.8	57.8	49.7
7-8 AM	1186	0.0	3000	1186	0	0.18	0	69.2	57.6	49.7
8-9 AM	1790	0.0	3000	1790	0	0.17	0	68.5	57.3	49.7
9-10 AM	2749	0.0	OFF	2749	0	0.00	0	67.3	67.3	67.3
10-11 AM	3663	0.0	OFF	3663	0	0.00	0	65.8	65.8	65.8
11AM-NOON	4182	0.0	OFF	4182	0	0.00	0	62.3	62.3	62.3
NOON-1PM	4306	0.0	OFF	4306	0	0.00	0	61.4	61.4	61.4
1-2 PM	4365	0.0	OFF	4365	0	0.00	0	61.0	61.0	61.0
2-3 PM	4341	0.0	OFF	4341	0	0.00	0	61.2	61.2	61.2
3-4 PM	4280	0.0	OFF	4280	0	0.00	0	61.6	61.6	61.6
4-5 PM	4179	0.0	OFF	4179	0	0.00	0	62.3	62.3	62.3
5-6 PM	3705	0.0	OFF	3705	0	0.00	0	65.5	65.5	65.5
6-7 PM	2977	0.0	OFF	2977	0	0.00	0	67.0	67.0	67.0
7-8 PM	2592	0.0	3000	2592	0	0.23	0	67.5	53.5	44.7
8-9 PM	1757	0.0	3000	1757	0	0.17	0	68.6	57.3	49.7
9-10 PM	1311	0.0	3000	1311	0	0.17	0	69.1	57.5	49.7
10-11 PM	986	0.0	3000	986	0	0.18	0	69.5	57.6	49.7
11PM-MID	648	0.0	3000	648	0	0.18	0	69.9	57.8	49.7

"OFF" INDICATES NO ROAD WORK (ALL LANES OPEN TO TRAFFIC)

----- SITE BREAKDOWN DELAYS -----	
BREAKDOWN DURATION (MINS)	0
RANGE OF QUEUE DELAY - MIN (VEH-H) MAX	0.0
AV BREAKDOWNS PER DAY	0.00
AV QUEUE DELAY/DAY (VEH-H)	0.0
AV TOTAL DELAY/DAY (VEH-H)	0.0

----- SITE ACCIDENT DELAYS -----	
BREAKDOWN DURATION (MINS)	0
RANGE OF QUEUE DELAY - MIN (VEH-H) MAX	0
AV BREAKDOWNS PER DAY	0
AV QUEUE DELAY/DAY (VEH-H)	0
AV TOTAL DELAY/DAY (VEH-H)	0

AVERAGE ACCIDENT NUMBERS (PIA/DAY)	
MAIN ROUTE WITHOUT WORKS	0.0083
MAIN ROUTE WITH WORKS	0.0068
'DIVERSION'	0.0000

PIA: Personal Injury Accidents

ECONOMIC IMPACT ON ROAD USERS	
ROAD USER COSTS PER DAY	\$660
CONGESTED HOURS PER DAY*	0

*Delays Exceeding User-Specified Maximum

**IH 94: MN 96 TO STH 35 N
NIGHTTIME CLOSURE
NO DIVERSION ROUTE (MAX QUEUE METHOD)**

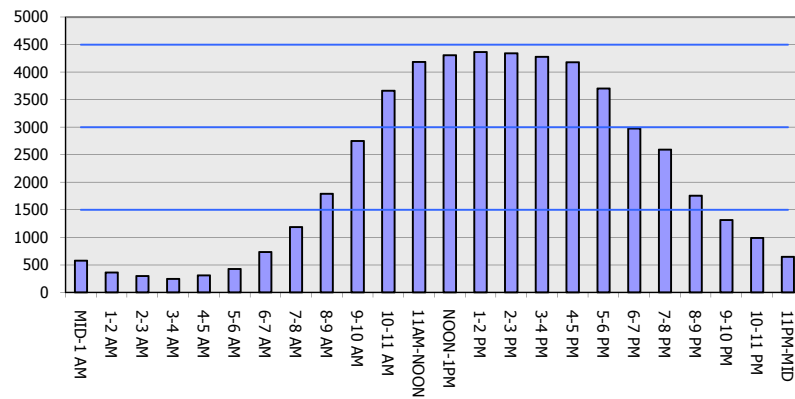
OCTOBER

Analyzed for 2009
Construction Season

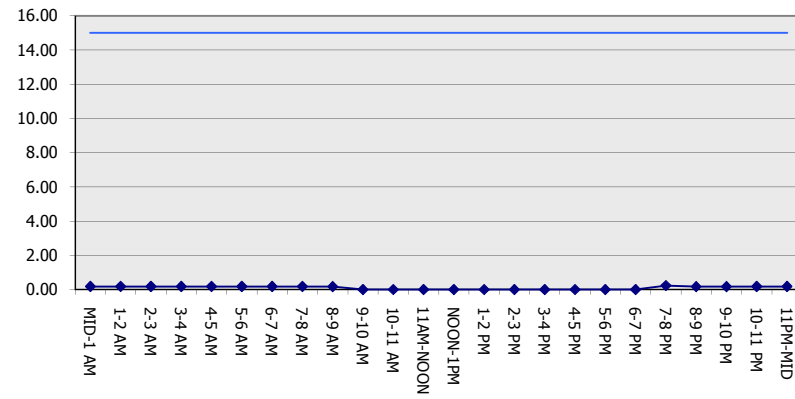
GRAPHICAL REPRESENTATION OF TRAFFIC MODEL INPUT AND OUTPUT

SUNDAY EASTBOUND DIRECTION

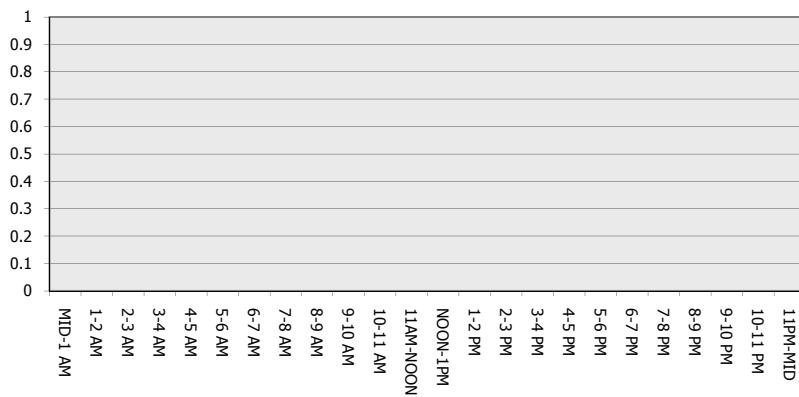
Main Route - Traffic Demand (Vehicles Per Hour)



Main Route Average Delay Per Vehicle (Minutes)



Main Route - Average Queue Length (Vehicles)



Main Route - Average Speed (MPH)

