

**IH 94: MN 96 TO STH 35 N  
NIGHTTIME CLOSURE  
NO DIVERSION ROUTE (MAX QUEUE METHOD)**

**OCTOBER**  
Analyzed for 2009  
Construction Season

**SUMMARY OF TRAFFIC MODEL OUTPUT**

SATURDAY WESTBOUND DIRECTION

TIME OF DAY	FLOWS AND CAPACITY IN VEH/HR						AVERAGE SPEEDS IN MPH			
	MAIN ROUTE		SITE CAPA CITY	FLOW		AV.DEL PER VEH (MINS)	AVERAGE QUEUE (VEH)	MAIN ROUTE		SITE
	DEMAND FLOW	PCT HEAVY		MAIN ROUTE	'DIVER TED'			WITHOUT WORK ZONE	WITH WORK ZONE	
MID-1 AM	739	0.0	3000	739	0	0.18	0	69.8	57.8	49.7
1-2 AM	552	0.0	3000	552	0	0.18	0	70.0	57.8	49.7
2-3 AM	503	0.0	3000	503	0	0.18	0	70.1	57.8	49.7
3-4 AM	497	0.0	3000	497	0	0.18	0	70.1	57.9	49.7
4-5 AM	605	0.0	3000	605	0	0.18	0	70.0	57.8	49.7
5-6 AM	791	0.0	3000	791	0	0.18	0	69.7	57.8	49.7
6-7 AM	954	0.0	3000	954	0	0.18	0	69.6	57.7	49.7
7-8 AM	1418	0.0	3000	1418	0	0.17	0	69.0	57.4	49.7
8-9 AM	1926	0.0	OFF	1926	0	0.00	0	68.3	68.3	68.3
9-10 AM	2678	0.0	OFF	2678	0	0.00	0	67.4	67.4	67.4
10-11 AM	3197	0.0	OFF	3197	0	0.00	0	66.8	66.8	66.8
11AM-NOON	3354	0.0	OFF	3354	0	0.00	0	66.6	66.6	66.6
NOON-1PM	3130	0.0	OFF	3130	0	0.00	0	66.8	66.8	66.8
1-2 PM	3041	0.0	OFF	3041	0	0.00	0	66.9	66.9	66.9
2-3 PM	3168	0.0	OFF	3168	0	0.00	0	66.8	66.8	66.8
3-4 PM	3206	0.0	OFF	3206	0	0.00	0	66.8	66.8	66.8
4-5 PM	3312	0.0	OFF	3312	0	0.00	0	66.6	66.6	66.6
5-6 PM	2942	0.0	OFF	2942	0	0.00	0	67.1	67.1	67.1
6-7 PM	2512	0.0	3000	2512	0	0.21	0	67.6	54.8	46.5
7-8 PM	2356	0.0	3000	2356	0	0.17	0	67.8	57.1	49.7
8-9 PM	1924	0.0	3000	1924	0	0.17	0	68.4	57.3	49.7
9-10 PM	1737	0.0	3000	1737	0	0.17	0	68.6	57.3	49.7
10-11 PM	1312	0.0	3000	1312	0	0.17	0	69.1	57.5	49.7
11PM-MID	847	0.0	3000	847	0	0.18	0	69.7	57.7	49.7

"OFF" INDICATES NO ROAD WORK (ALL LANES OPEN TO TRAFFIC)

*----- SITE BREAKDOWN DELAYS -----*	
BREAKDOWN DURATION (MINS)	0
RANGE OF QUEUE DELAY - MIN (VEH-H) MAX	0.0
AV BREAKDOWNS PER DAY	0.00
AV QUEUE DELAY/DAY (VEH-H)	0.0
AV TOTAL DELAY/DAY (VEH-H)	0.0

*----- SITE ACCIDENT DELAYS -----*	
BREAKDOWN DURATION (MINS)	0
RANGE OF QUEUE DELAY - MIN (VEH-H) MAX	0
AV BREAKDOWNS PER DAY	0
AV QUEUE DELAY/DAY (VEH-H)	0
AV TOTAL DELAY/DAY (VEH-H)	0

AVERAGE ACCIDENT NUMBERS (PIA/DAY)	
MAIN ROUTE WITHOUT WORKS	0.0074
MAIN ROUTE WITH WORKS	0.0056
'DIVERSION'	0.0000
PIA: Personal Injury Accidents	
IMPACTS ON ROAD USERS	
ROAD USER COSTS PER DAY	\$675
CONGESTED HOURS PER DAY*	0

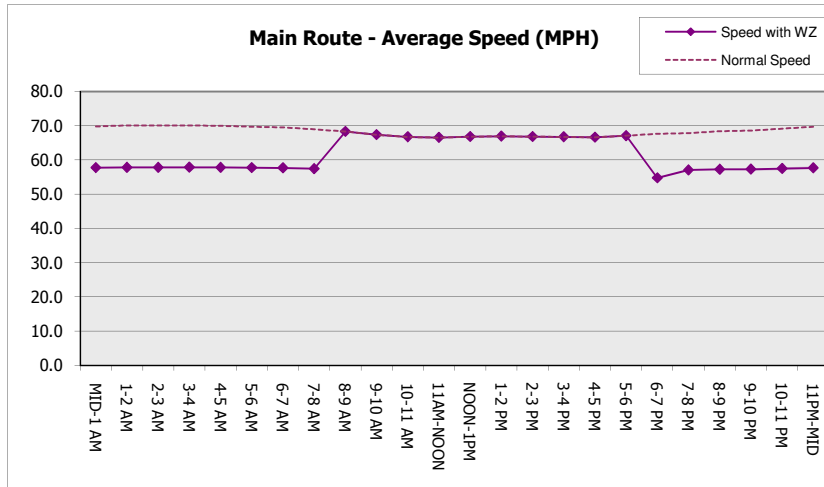
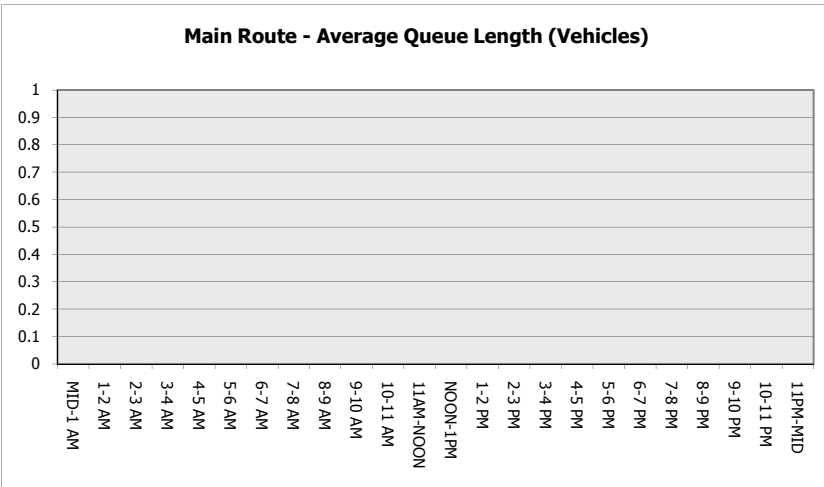
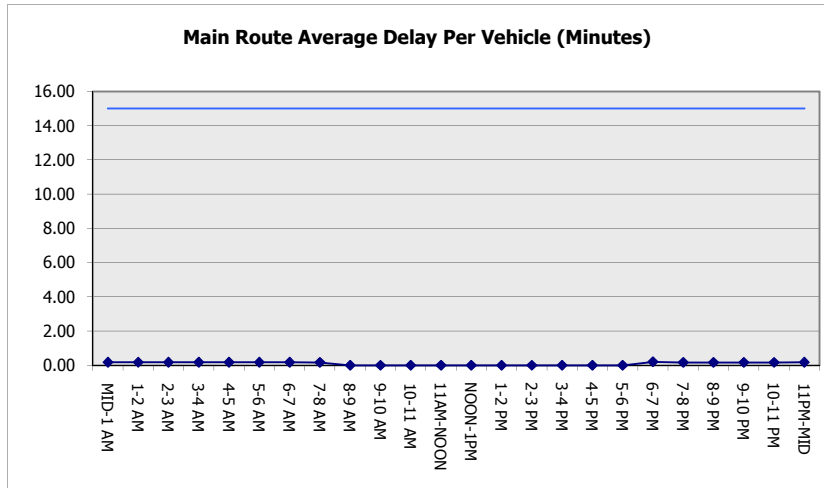
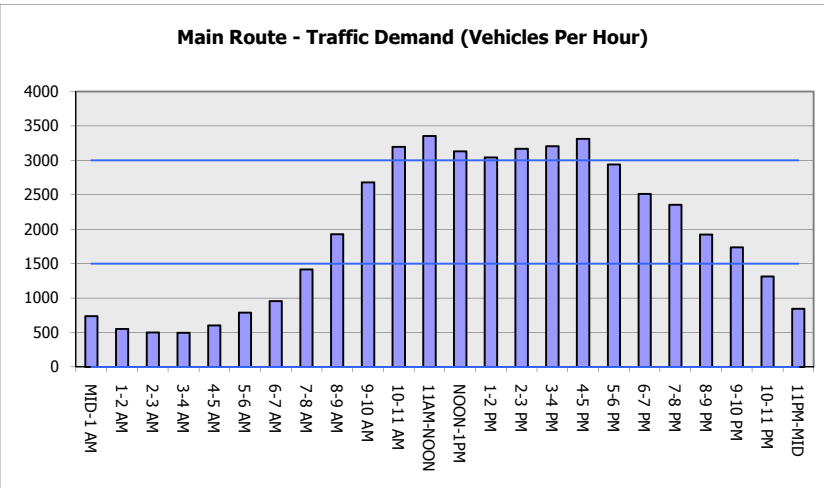
\*Delays Exceeding User-Specified Maximum

**IH 94: MN 96 TO STH 35 N  
NIGHTTIME CLOSURE  
NO DIVERSION ROUTE (MAX QUEUE METHOD)**

**OCTOBER**

Analyzed for 2009  
Construction Season

**GRAPHICAL REPRESENTATION OF TRAFFIC MODEL INPUT AND OUTPUT**  
**SATURDAY WESTBOUND DIRECTION**



<b>IH 94: MN 96 TO STH 35 N NIGHTTIME CLOSURE NO DIVERSION ROUTE (MAX QUEUE METHOD)</b>	<b>OCTOBER</b> Analyzed for 2009 Construction Season
---	--

**SUMMARY OF TRAFFIC MODEL OUTPUT**

SATURDAY EASTBOUND DIRECTION

TIME OF DAY	FLOWS AND CAPACITY IN VEH/HR						AVERAGE SPEEDS IN MPH			
	MAIN ROUTE		SITE CAPA CITY	FLOW		AV.DEL PER VEH (MINS)	AVERAGE QUEUE (VEH)	MAIN ROUTE		SITE
	DEMAND FLOW	PCT HEAVY		MAIN ROUTE	'DIVER TED'			WITHOUT WORK ZONE	WITH WORK ZONE	
MID-1 AM	784	0.0	3000	784	0	0.18	0	69.7	57.8	49.7
1-2 AM	498	0.0	3000	498	0	0.18	0	70.1	57.9	49.7
2-3 AM	380	0.0	3000	380	0	0.18	0	70.2	57.9	49.7
3-4 AM	406	0.0	3000	406	0	0.18	0	70.2	57.9	49.7
4-5 AM	512	0.0	3000	512	0	0.18	0	70.1	57.8	49.7
5-6 AM	766	0.0	3000	766	0	0.18	0	69.8	57.8	49.7
6-7 AM	1306	0.0	3000	1306	0	0.18	0	69.1	57.5	49.7
7-8 AM	2031	0.0	3000	2031	0	0.17	0	68.2	57.2	49.7
8-9 AM	2756	0.0	OFF	2756	0	0.00	0	67.3	67.3	67.3
9-10 AM	3475	0.0	OFF	3475	0	0.00	0	66.4	66.4	66.4
10-11 AM	3841	0.0	OFF	3841	0	0.00	0	64.6	64.6	64.6
11AM-NOON	3723	0.0	OFF	3723	0	0.00	0	65.5	65.5	65.5
NOON-1PM	3371	0.0	OFF	3371	0	0.00	0	66.6	66.6	66.6
1-2 PM	3224	0.0	OFF	3224	0	0.00	0	66.8	66.8	66.8
2-3 PM	3183	0.0	OFF	3183	0	0.00	0	66.8	66.8	66.8
3-4 PM	3086	0.0	OFF	3086	0	0.00	0	66.9	66.9	66.9
4-5 PM	3097	0.0	OFF	3097	0	0.00	0	66.9	66.9	66.9
5-6 PM	2825	0.0	OFF	2825	0	0.00	0	67.3	67.3	67.3
6-7 PM	2370	0.0	3000	2370	0	0.17	0	67.8	57.1	49.7
7-8 PM	2025	0.0	3000	2025	0	0.17	0	68.2	57.2	49.7
8-9 PM	1659	0.0	3000	1659	0	0.17	0	68.7	57.4	49.7
9-10 PM	1403	0.0	3000	1403	0	0.17	0	69.0	57.4	49.7
10-11 PM	1171	0.0	3000	1171	0	0.18	0	69.3	57.6	49.7
11PM-MID	859	0.0	3000	859	0	0.18	0	69.7	57.7	49.7

**"OFF" INDICATES NO ROAD WORK (ALL LANES OPEN TO TRAFFIC)**

*----- SITE BREAKDOWN DELAYS -----*	
BREAKDOWN DURATION (MINS)	0
RANGE OF QUEUE DELAY - MIN (VEH-H) MAX	0.0
AV BREAKDOWNS PER DAY	0.00
AV QUEUE DELAY/DAY (VEH-H)	0.0
AV TOTAL DELAY/DAY (VEH-H)	0.0

*----- SITE ACCIDENT DELAYS -----*	
BREAKDOWN DURATION (MINS)	0
RANGE OF QUEUE DELAY - MIN (VEH-H) MAX	0
AV BREAKDOWNS PER DAY	0
AV QUEUE DELAY/DAY (VEH-H)	0
AV TOTAL DELAY/DAY (VEH-H)	0

AVERAGE ACCIDENT NUMBERS (PIA/DAY)	
MAIN ROUTE WITHOUT WORKS	0.0078
MAIN ROUTE WITH WORKS	0.0060
'DIVERSION'	0.0000

PIA: Personal Injury Accidents

ECONOMIC IMPACT ON ROAD USERS	
ROAD USER COSTS PER DAY	\$633
CONGESTED HOURS PER DAY*	0

\*Delays Exceeding User-Specified Maximum

**IH 94: MN 96 TO STH 35 N  
NIGHTTIME CLOSURE  
NO DIVERSION ROUTE (MAX QUEUE METHOD)**

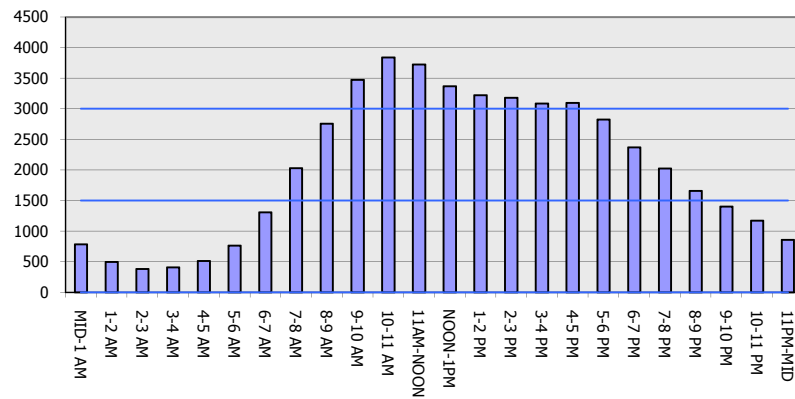
**OCTOBER**

Analyzed for 2009  
Construction Season

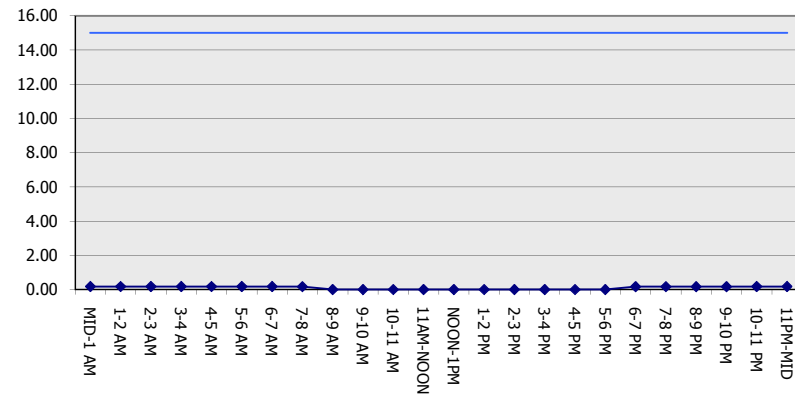
**GRAPHICAL REPRESENTATION OF TRAFFIC MODEL INPUT AND OUTPUT**

**SATURDAY EASTBOUND DIRECTION**

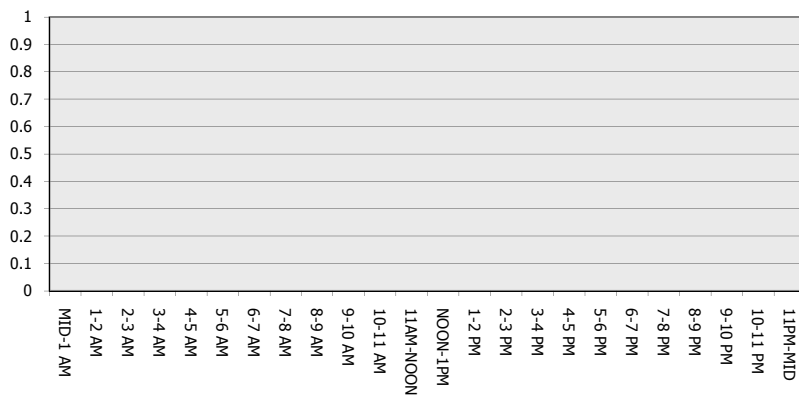
**Main Route - Traffic Demand (Vehicles Per Hour)**



**Main Route Average Delay Per Vehicle (Minutes)**



**Main Route - Average Queue Length (Vehicles)**



**Main Route - Average Speed (MPH)**

