

IH 94: MN 96 TO STH 35 N NIGHTTIME 2 LANE CLOSURE NO DIVERSION ROUTE (MAX QUEUE METHOD)	OCTOBER
	Analyzed for 2009 Construction Season

SUMMARY OF TRAFFIC MODEL OUTPUT

MON-THUR WESTBOUND DIRECTION

TIME OF DAY	FLOWS AND CAPACITY IN VEH/HR						AVERAGE SPEEDS IN MPH			
	MAIN ROUTE		SITE CAPA CITY	FLOW		AV.DEL PER VEH (MINS)	AVERAGE QUEUE (VEH)	MAIN ROUTE		SITE
	DEMAND FLOW	PCT HEAVY		MAIN ROUTE	'DIVER TED'			WITHOUT WORK ZONE	WITH WORK ZONE	
MID-1 AM	592	0.0	1500	592	0	0.27	0	70.0	53.0	43.2
1-2 AM	548	0.0	1500	548	0	0.27	0	70.0	53.2	43.3
2-3 AM	588	0.0	1500	588	0	0.27	0	70.0	53.0	43.2
3-4 AM	783	0.0	1500	783	0	0.29	0	69.7	52.4	42.5
4-5 AM	1416	0.0	1499	1416	0	0.81	15	69.0	35.8	34.5
5-6 AM	2467	0.0	OFF	2467	0	0.01	0	67.7	67.1	67.1
6-7 AM	2795	0.0	OFF	2795	0	0.00	0	67.3	67.3	67.3
7-8 AM	2673	0.0	OFF	2673	0	0.00	0	67.4	67.4	67.4
8-9 AM	2450	0.0	OFF	2450	0	0.00	0	67.7	67.7	67.7
9-10 AM	2311	0.0	OFF	2311	0	0.00	0	67.9	67.9	67.9
10-11 AM	2382	0.0	OFF	2382	0	0.00	0	67.8	67.8	67.8
11AM-NOON	2471	0.0	OFF	2471	0	0.00	0	67.7	67.7	67.7
NOON-1PM	2520	0.0	OFF	2520	0	0.00	0	67.6	67.6	67.6
1-2 PM	2770	0.0	OFF	2770	0	0.00	0	67.3	67.3	67.3
2-3 PM	2815	0.0	OFF	2815	0	0.00	0	67.3	67.3	67.3
3-4 PM	2987	0.0	OFF	2987	0	0.00	0	67.0	67.0	67.0
4-5 PM	3005	0.0	OFF	3005	0	0.00	0	67.0	67.0	67.0
5-6 PM	2780	0.0	OFF	2780	0	0.00	0	67.3	67.3	67.3
6-7 PM	2315	0.0	OFF	2315	0	0.00	0	67.9	67.9	67.9
7-8 PM	1903	0.0	1499	1903	0	8.13	224	68.4	8.0	30.8
8-9 PM	1585	0.0	1499	1585	0	18.22	463	68.7	5.2	30.8
9-10 PM	1347	0.0	1499	1347	0	16.91	430	69.1	5.4	30.8
10-11 PM	1004	0.0	1499	1004	0	2.06	130	69.5	22.2	37.8
11PM-MID	705	0.0	1500	705	0	0.28	0	69.9	52.7	42.7

"OFF" INDICATES NO ROAD WORK (ALL LANES OPEN TO TRAFFIC)

----- SITE BREAKDOWN DELAYS -----	
BREAKDOWN DURATION (MINS)	0
RANGE OF QUEUE DELAY - MIN (VEH-H) MAX	0.0
AV BREAKDOWNS PER DAY	0.00
AV QUEUE DELAY/DAY (VEH-H)	0.0
AV TOTAL DELAY/DAY (VEH-H)	0.0

----- SITE ACCIDENT DELAYS -----	
BREAKDOWN DURATION (MINS)	0
RANGE OF QUEUE DELAY - MIN (VEH-H) MAX	0
AV BREAKDOWNS PER DAY	0
AV QUEUE DELAY/DAY (VEH-H)	0
AV TOTAL DELAY/DAY (VEH-H)	0

AVERAGE ACCIDENT NUMBERS (PIA/DAY)	
MAIN ROUTE WITHOUT WORKS	0.0075
MAIN ROUTE WITH WORKS	0.0064
'DIVERSION'	0.0000
<small>PIA: Personal Injury Accidents</small>	
IMPACTS ON ROAD USERS	
ROAD USER COSTS PER DAY	\$17,247
CONGESTED HOURS PER DAY*	0

*Delays Exceeding User-Specified Maximum

**IH 94: MN 96 TO STH 35 N
NIGHTTIME 2 LANE CLOSURE
NO DIVERSION ROUTE (MAX QUEUE METHOD)**

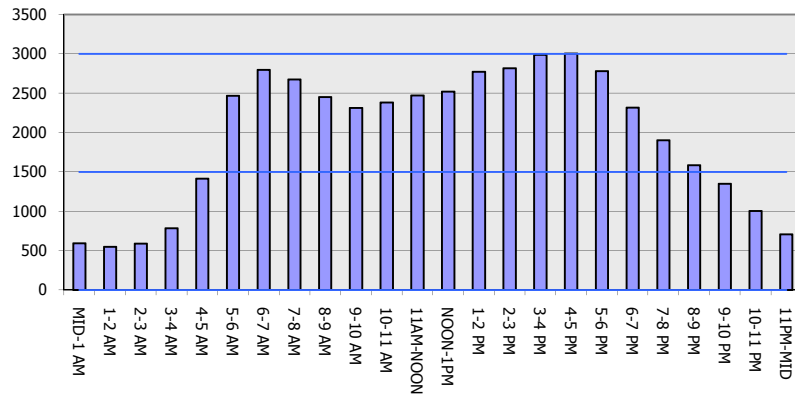
OCTOBER

Analyzed for 2009
Construction Season

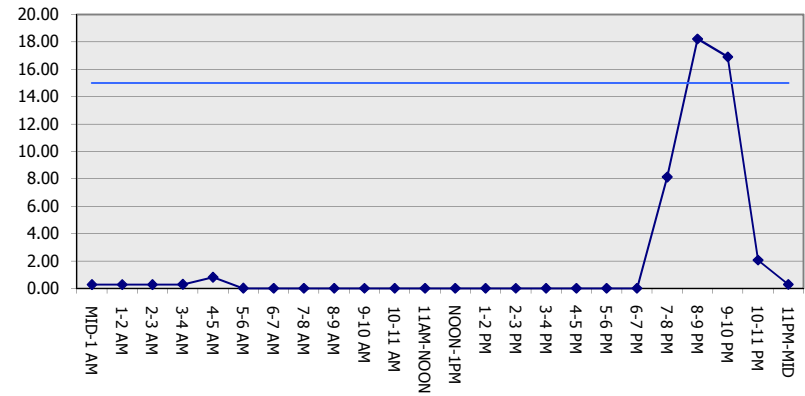
GRAPHICAL REPRESENTATION OF TRAFFIC MODEL INPUT AND OUTPUT

MON-THUR WESTBOUND DIRECTION

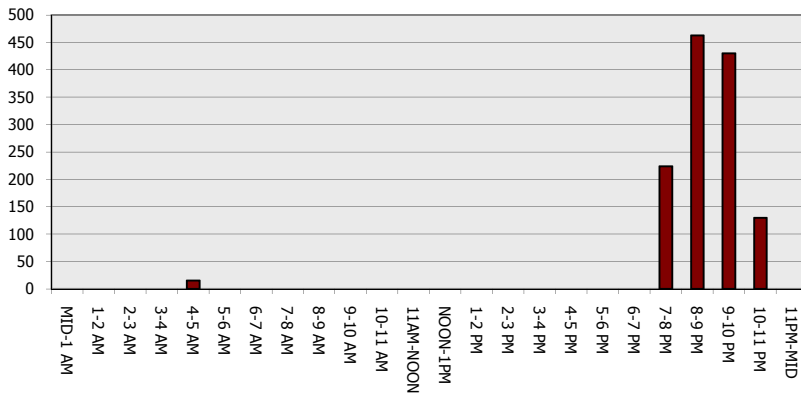
Main Route - Traffic Demand (Vehicles Per Hour)



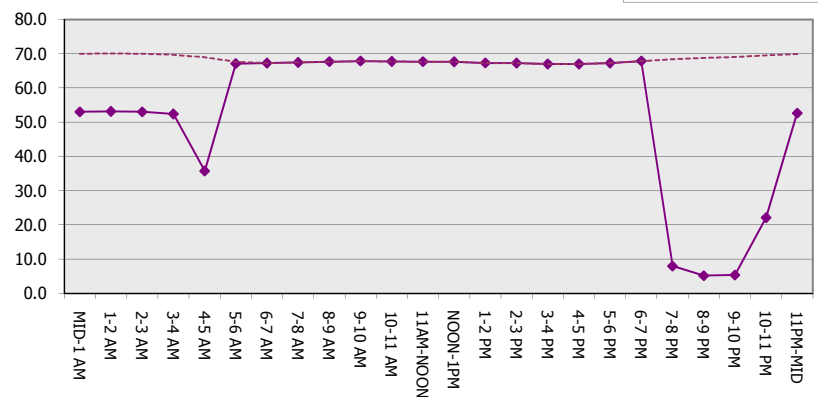
Main Route Average Delay Per Vehicle (Minutes)



Main Route - Average Queue Length (Vehicles)



Main Route - Average Speed (MPH)



IH 94: MN 96 TO STH 35 N NIGHTTIME 2 LANE CLOSURE NO DIVERSION ROUTE (MAX QUEUE METHOD)	OCTOBER Analyzed for 2009 Construction Season
--	--

SUMMARY OF TRAFFIC MODEL OUTPUT
MON-THUR EASTBOUND DIRECTION

TIME OF DAY	FLOWS AND CAPACITY IN VEH/HR						AVERAGE SPEEDS IN MPH			
	MAIN ROUTE		SITE CAPA CITY	FLOW		AV.DEL PER VEH (MINS)	AVERAGE QUEUE (VEH)	MAIN ROUTE		SITE
	DEMAND FLOW	PCT HEAVY		MAIN ROUTE	'DIVER TED'			WITHOUT WORK ZONE	WITH WORK ZONE	
MID-1 AM	604	0.0	1500	604	0	0.28	0	70.0	53.0	43.1
1-2 AM	408	0.0	1500	408	0	0.26	0	70.2	53.6	43.8
2-3 AM	365	0.0	1500	365	0	0.26	0	70.2	53.7	44.0
3-4 AM	416	0.0	1500	416	0	0.26	0	70.2	53.6	43.8
4-5 AM	588	0.0	1500	588	0	0.27	0	70.0	53.0	43.2
5-6 AM	1010	0.0	OFF	1010	0	0.00	0	69.5	69.5	69.5
6-7 AM	1717	0.0	OFF	1717	0	0.00	0	68.6	68.6	68.6
7-8 AM	2251	0.0	OFF	2251	0	0.00	0	67.9	67.9	67.9
8-9 AM	2359	0.0	OFF	2359	0	0.00	0	67.8	67.8	67.8
9-10 AM	2706	0.0	OFF	2706	0	0.00	0	67.4	67.4	67.4
10-11 AM	2883	0.0	OFF	2883	0	0.00	0	67.1	67.1	67.1
11AM-NOON	2828	0.0	OFF	2828	0	0.00	0	67.2	67.2	67.2
NOON-1PM	2798	0.0	OFF	2798	0	0.00	0	67.3	67.3	67.3
1-2 PM	2991	0.0	OFF	2991	0	0.00	0	67.0	67.0	67.0
2-3 PM	3281	0.0	OFF	3281	0	0.00	0	66.6	66.6	66.6
3-4 PM	3638	0.0	OFF	3638	0	0.00	0	66.0	66.0	66.0
4-5 PM	3579	0.0	OFF	3579	0	0.00	0	66.3	66.3	66.3
5-6 PM	2934	0.0	OFF	2934	0	0.00	0	67.1	67.1	67.1
6-7 PM	2523	0.0	OFF	2523	0	0.00	0	67.6	67.6	67.6
7-8 PM	1931	0.0	1499	1931	0	8.86	244	68.3	7.6	30.8
8-9 PM	1603	0.0	1499	1603	0	19.56	498	68.7	5.1	30.8
9-10 PM	1416	0.0	1499	1416	0	19.85	505	69.0	5.1	30.8
10-11 PM	1171	0.0	1499	1171	0	11.57	305	69.3	6.5	32.3
11PM-MID	776	0.0	1500	776	0	0.44	11	69.7	46.3	42.4

"OFF" INDICATES NO ROAD WORK (ALL LANES OPEN TO TRAFFIC)

----- SITE BREAKDOWN DELAYS -----	
BREAKDOWN DURATION (MINS)	0
RANGE OF QUEUE DELAY - MIN (VEH-H) MAX	0.0
AV BREAKDOWNS PER DAY	0.00
AV QUEUE DELAY/DAY (VEH-H)	0.0
AV TOTAL DELAY/DAY (VEH-H)	0.0

----- SITE ACCIDENT DELAYS -----	
BREAKDOWN DURATION (MINS)	0
RANGE OF QUEUE DELAY - MIN (VEH-H) MAX	0
AV BREAKDOWNS PER DAY	0
AV QUEUE DELAY/DAY (VEH-H)	0
AV TOTAL DELAY/DAY (VEH-H)	0

AVERAGE ACCIDENT NUMBERS (PIA/DAY)	
MAIN ROUTE WITHOUT WORKS	0.0074
MAIN ROUTE WITH WORKS	0.0064
'DIVERSION'	0.0000

PIA: Personal Injury Accidents

ECONOMIC IMPACT ON ROAD USERS	
ROAD USER COSTS PER DAY	\$22,048
CONGESTED HOURS PER DAY*	0

*Delays Exceeding User-Specified Maximum

**IH 94: MN 96 TO STH 35 N
NIGHTTIME 2 LANE CLOSURE
NO DIVERSION ROUTE (MAX QUEUE METHOD)**

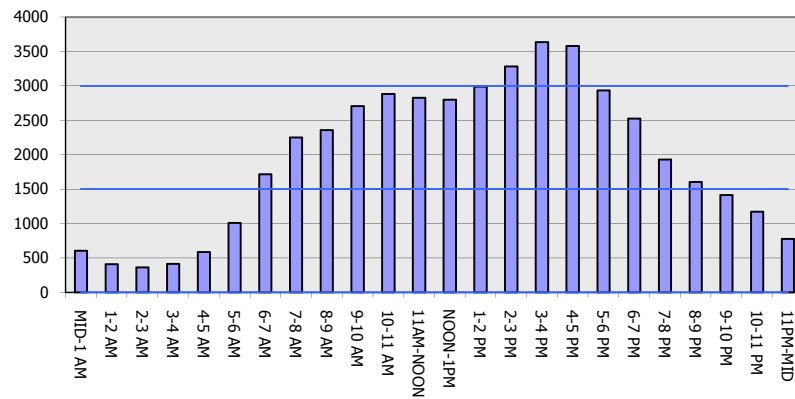
OCTOBER

Analyzed for 2009
Construction Season

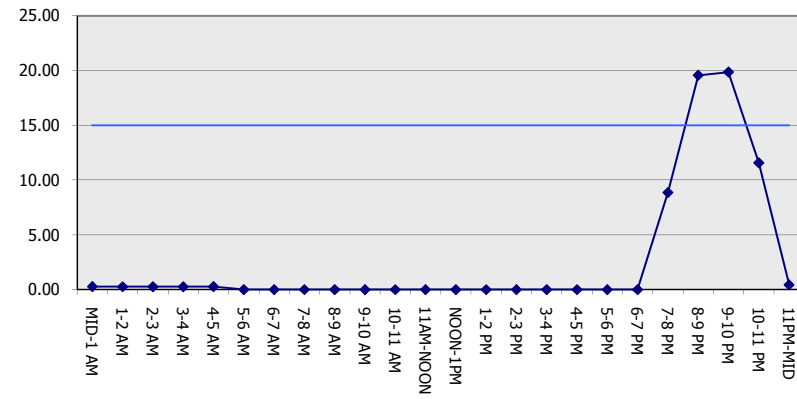
GRAPHICAL REPRESENTATION OF TRAFFIC MODEL INPUT AND OUTPUT

MON-THUR EASTBOUND DIRECTION

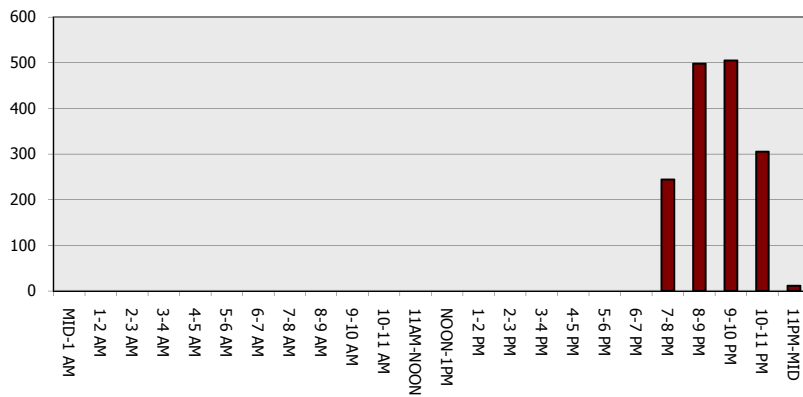
Main Route - Traffic Demand (Vehicles Per Hour)



Main Route Average Delay Per Vehicle (Minutes)



Main Route - Average Queue Length (Vehicles)



Main Route - Average Speed (MPH)

