

IH 94: MN 96 TO STH 35 N NIGHTTIME CLOSURE NO DIVERSION ROUTE (MAX QUEUE METHOD)	OCTOBER
	Analyzed for 2009 Construction Season

SUMMARY OF TRAFFIC MODEL OUTPUT

MON-THUR WESTBOUND DIRECTION

TIME OF DAY	FLOWS AND CAPACITY IN VEH/HR						AVERAGE SPEEDS IN MPH			
	MAIN ROUTE		SITE CAPA CITY	FLOW		AV.DEL PER VEH (MINS)	AVERAGE QUEUE (VEH)	MAIN ROUTE		SITE
	DEMAND FLOW	PCT HEAVY		MAIN ROUTE	'DIVER TED'			WITHOUT WORK ZONE	WITH WORK ZONE	
MID-1 AM	592	0.0	3000	592	0	0.18	0	70.0	57.8	49.7
1-2 AM	548	0.0	3000	548	0	0.18	0	70.0	57.8	49.7
2-3 AM	588	0.0	3000	588	0	0.18	0	70.0	57.8	49.7
3-4 AM	783	0.0	3000	783	0	0.18	0	69.7	57.8	49.7
4-5 AM	1416	0.0	3000	1416	0	0.17	0	69.0	57.4	49.7
5-6 AM	2467	0.0	OFF	2467	0	0.00	0	67.7	67.7	67.7
6-7 AM	2795	0.0	OFF	2795	0	0.00	0	67.3	67.3	67.3
7-8 AM	2673	0.0	OFF	2673	0	0.00	0	67.4	67.4	67.4
8-9 AM	2450	0.0	OFF	2450	0	0.00	0	67.7	67.7	67.7
9-10 AM	2311	0.0	OFF	2311	0	0.00	0	67.9	67.9	67.9
10-11 AM	2382	0.0	OFF	2382	0	0.00	0	67.8	67.8	67.8
11AM-NOON	2471	0.0	OFF	2471	0	0.00	0	67.7	67.7	67.7
NOON-1PM	2520	0.0	OFF	2520	0	0.00	0	67.6	67.6	67.6
1-2 PM	2770	0.0	OFF	2770	0	0.00	0	67.3	67.3	67.3
2-3 PM	2815	0.0	OFF	2815	0	0.00	0	67.3	67.3	67.3
3-4 PM	2987	0.0	OFF	2987	0	0.00	0	67.0	67.0	67.0
4-5 PM	3005	0.0	OFF	3005	0	0.00	0	67.0	67.0	67.0
5-6 PM	2780	0.0	OFF	2780	0	0.00	0	67.3	67.3	67.3
6-7 PM	2315	0.0	OFF	2315	0	0.00	0	67.9	67.9	67.9
7-8 PM	1903	0.0	3000	1903	0	0.17	0	68.4	57.3	49.7
8-9 PM	1585	0.0	3000	1585	0	0.17	0	68.7	57.4	49.7
9-10 PM	1347	0.0	3000	1347	0	0.17	0	69.1	57.5	49.7
10-11 PM	1004	0.0	3000	1004	0	0.18	0	69.5	57.6	49.7
11PM-MID	705	0.0	3000	705	0	0.18	0	69.9	57.8	49.7

"OFF" INDICATES NO ROAD WORK (ALL LANES OPEN TO TRAFFIC)

----- SITE BREAKDOWN DELAYS -----	
BREAKDOWN DURATION (MINS)	0
RANGE OF QUEUE DELAY - MIN (VEH-H) MAX	0.0
AV BREAKDOWNS PER DAY	0.00
AV QUEUE DELAY/DAY (VEH-H)	0.0
AV TOTAL DELAY/DAY (VEH-H)	0.0

----- SITE ACCIDENT DELAYS -----	
BREAKDOWN DURATION (MINS)	0
RANGE OF QUEUE DELAY - MIN (VEH-H) MAX	0
AV BREAKDOWNS PER DAY	0
AV QUEUE DELAY/DAY (VEH-H)	0
AV TOTAL DELAY/DAY (VEH-H)	0

AVERAGE ACCIDENT NUMBERS (PIA/DAY)	
MAIN ROUTE WITHOUT WORKS	0.0075
MAIN ROUTE WITH WORKS	0.0064
'DIVERSION'	0.0000
<small>PIA: Personal Injury Accidents</small>	
IMPACTS ON ROAD USERS	
ROAD USER COSTS PER DAY	\$354
CONGESTED HOURS PER DAY*	0

*Delays Exceeding User-Specified Maximum

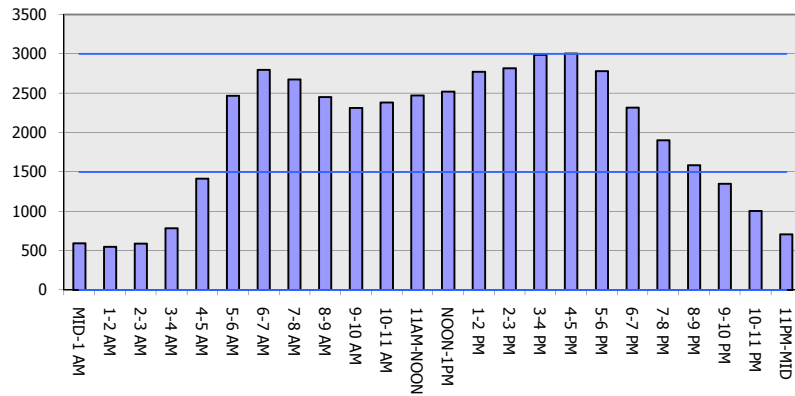
**IH 94: MN 96 TO STH 35 N
NIGHTTIME CLOSURE
NO DIVERSION ROUTE (MAX QUEUE METHOD)**

OCTOBER

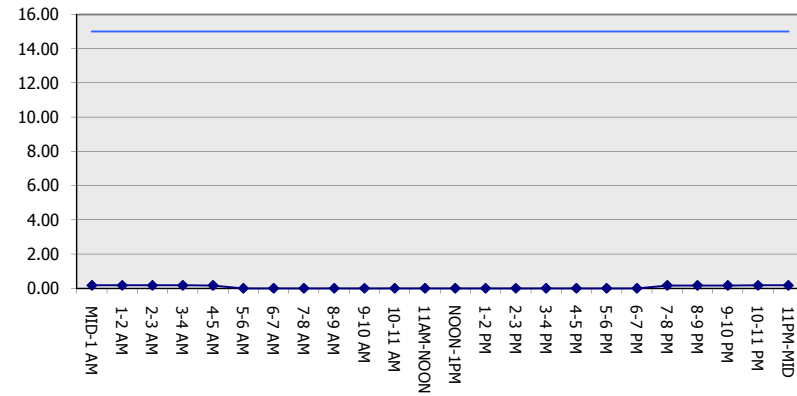
Analyzed for 2009
Construction Season

GRAPHICAL REPRESENTATION OF TRAFFIC MODEL INPUT AND OUTPUT
MON-THUR WESTBOUND DIRECTION

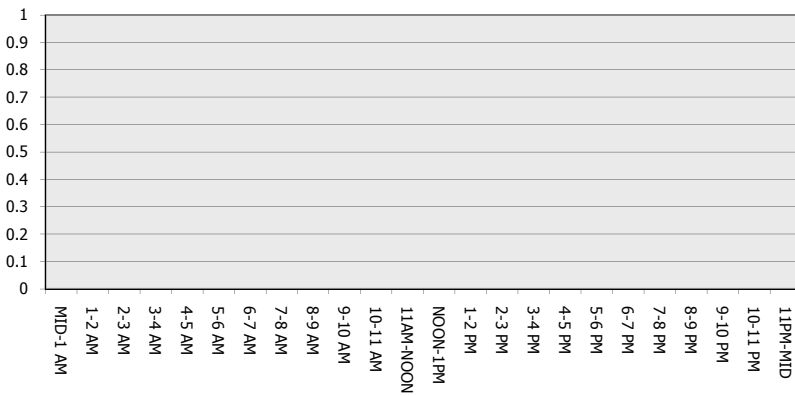
Main Route - Traffic Demand (Vehicles Per Hour)



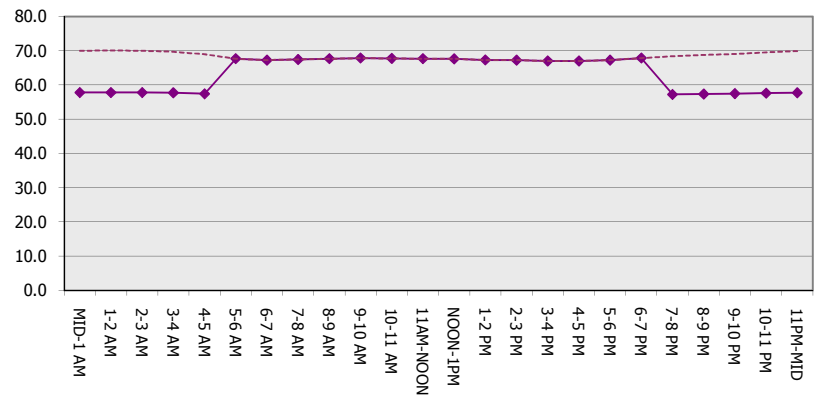
Main Route Average Delay Per Vehicle (Minutes)



Main Route - Average Queue Length (Vehicles)



Main Route - Average Speed (MPH)



IH 94: MN 96 TO STH 35 N NIGHTTIME CLOSURE NO DIVERSION ROUTE (MAX QUEUE METHOD)	OCTOBER
	Analyzed for 2009 Construction Season

SUMMARY OF TRAFFIC MODEL OUTPUT

MON-THUR EASTBOUND DIRECTION

TIME OF DAY	FLOWS AND CAPACITY IN VEH/HR						AVERAGE SPEEDS IN MPH			
	MAIN ROUTE		SITE CAPA CITY	FLOW		AV.DEL PER VEH (MINS)	AVERAGE QUEUE (VEH)	MAIN ROUTE		SITE
	DEMAND FLOW	PCT HEAVY		MAIN ROUTE	'DIVER TED'			WITHOUT WORK ZONE	WITH WORK ZONE	
MID-1 AM	604	0.0	3000	604	0	0.18	0	70.0	57.8	49.7
1-2 AM	408	0.0	3000	408	0	0.18	0	70.2	57.9	49.7
2-3 AM	365	0.0	3000	365	0	0.18	0	70.2	57.9	49.7
3-4 AM	416	0.0	3000	416	0	0.18	0	70.2	57.9	49.7
4-5 AM	588	0.0	3000	588	0	0.18	0	70.0	57.8	49.7
5-6 AM	1010	0.0	OFF	1010	0	0.00	0	69.5	69.5	69.5
6-7 AM	1717	0.0	OFF	1717	0	0.00	0	68.6	68.6	68.6
7-8 AM	2251	0.0	OFF	2251	0	0.00	0	67.9	67.9	67.9
8-9 AM	2359	0.0	OFF	2359	0	0.00	0	67.8	67.8	67.8
9-10 AM	2706	0.0	OFF	2706	0	0.00	0	67.4	67.4	67.4
10-11 AM	2883	0.0	OFF	2883	0	0.00	0	67.1	67.1	67.1
11AM-NOON	2828	0.0	OFF	2828	0	0.00	0	67.2	67.2	67.2
NOON-1PM	2798	0.0	OFF	2798	0	0.00	0	67.3	67.3	67.3
1-2 PM	2991	0.0	OFF	2991	0	0.00	0	67.0	67.0	67.0
2-3 PM	3281	0.0	OFF	3281	0	0.00	0	66.6	66.6	66.6
3-4 PM	3638	0.0	OFF	3638	0	0.00	0	66.0	66.0	66.0
4-5 PM	3579	0.0	OFF	3579	0	0.00	0	66.3	66.3	66.3
5-6 PM	2934	0.0	OFF	2934	0	0.00	0	67.1	67.1	67.1
6-7 PM	2523	0.0	OFF	2523	0	0.00	0	67.6	67.6	67.6
7-8 PM	1931	0.0	3000	1931	0	0.17	0	68.3	57.3	49.7
8-9 PM	1603	0.0	3000	1603	0	0.17	0	68.7	57.4	49.7
9-10 PM	1416	0.0	3000	1416	0	0.17	0	69.0	57.4	49.7
10-11 PM	1171	0.0	3000	1171	0	0.18	0	69.3	57.6	49.7
11PM-MID	776	0.0	3000	776	0	0.18	0	69.7	57.8	49.7

"OFF" INDICATES NO ROAD WORK (ALL LANES OPEN TO TRAFFIC)

----- SITE BREAKDOWN DELAYS -----	
BREAKDOWN DURATION (MINS)	0
RANGE OF QUEUE DELAY - MIN (VEH-H) MAX	0.0
AV BREAKDOWNS PER DAY	0.00
AV QUEUE DELAY/DAY (VEH-H)	0.0
AV TOTAL DELAY/DAY (VEH-H)	0.0

----- SITE ACCIDENT DELAYS -----	
BREAKDOWN DURATION (MINS)	0
RANGE OF QUEUE DELAY - MIN (VEH-H) MAX	0
AV BREAKDOWNS PER DAY	0
AV QUEUE DELAY/DAY (VEH-H)	0
AV TOTAL DELAY/DAY (VEH-H)	0

AVERAGE ACCIDENT NUMBERS (PIA/DAY)	
MAIN ROUTE WITHOUT WORKS	0.0074
MAIN ROUTE WITH WORKS	0.0064
'DIVERSION'	0.0000

PIA: Personal Injury Accidents

ECONOMIC IMPACT ON ROAD USERS	
ROAD USER COSTS PER DAY	\$315
CONGESTED HOURS PER DAY*	0

*Delays Exceeding User-Specified Maximum

**IH 94: MN 96 TO STH 35 N
NIGHTTIME CLOSURE
NO DIVERSION ROUTE (MAX QUEUE METHOD)**

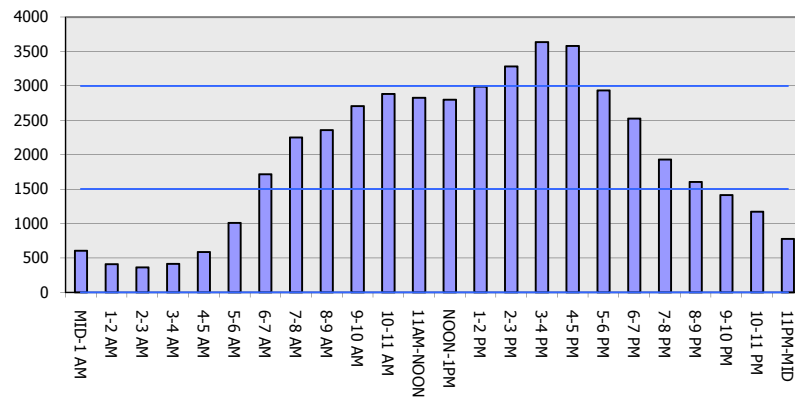
OCTOBER

Analyzed for 2009
Construction Season

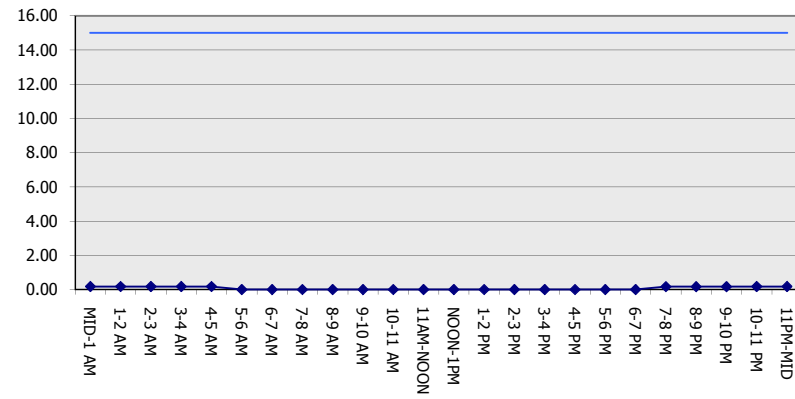
GRAPHICAL REPRESENTATION OF TRAFFIC MODEL INPUT AND OUTPUT

MON-THUR EASTBOUND DIRECTION

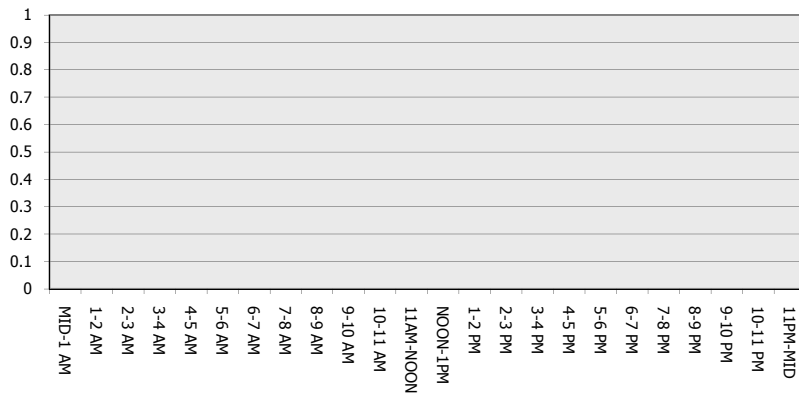
Main Route - Traffic Demand (Vehicles Per Hour)



Main Route Average Delay Per Vehicle (Minutes)



Main Route - Average Queue Length (Vehicles)



Main Route - Average Speed (MPH)

