

IH 94: MN 96 TO STH 35 N NIGHTTIME CLOSURE NO DIVERSION ROUTE (MAX QUEUE METHOD)	OCTOBER
	Analyzed for 2009 Construction Season

SUMMARY OF TRAFFIC MODEL OUTPUT

FRIDAY WESTBOUND DIRECTION

TIME OF DAY	FLOWS AND CAPACITY IN VEH/HR						AVERAGE SPEEDS IN MPH			
	MAIN ROUTE		SITE CAPA CITY	FLOW		AV.DEL PER VEH (MINS)	AVERAGE QUEUE (VEH)	MAIN ROUTE		SITE
	DEMAND FLOW	PCT HEAVY		MAIN ROUTE	'DIVER TED'			WITHOUT WORK ZONE	WITH WORK ZONE	
MID-1 AM	733	0.0	3000	733	0	0.18	0	69.8	57.8	49.7
1-2 AM	633	0.0	3000	633	0	0.18	0	69.9	57.8	49.7
2-3 AM	693	0.0	3000	693	0	0.18	0	69.9	57.8	49.7
3-4 AM	803	0.0	3000	803	0	0.18	0	69.7	57.8	49.7
4-5 AM	1215	0.0	3000	1215	0	0.18	0	69.2	57.6	49.7
5-6 AM	2181	0.0	OFF	2181	0	0.00	0	68.0	68.0	68.0
6-7 AM	2540	0.0	OFF	2540	0	0.00	0	67.6	67.6	67.6
7-8 AM	2748	0.0	OFF	2748	0	0.00	0	67.3	67.3	67.3
8-9 AM	2557	0.0	OFF	2557	0	0.00	0	67.6	67.6	67.6
9-10 AM	2660	0.0	OFF	2660	0	0.00	0	67.4	67.4	67.4
10-11 AM	3003	0.0	OFF	3003	0	0.00	0	67.0	67.0	67.0
11AM-NOON	3371	0.0	OFF	3371	0	0.00	0	66.6	66.6	66.6
NOON-1PM	3612	0.0	OFF	3612	0	0.00	0	66.2	66.2	66.2
1-2 PM	4171	0.0	OFF	4171	0	0.00	0	62.3	62.3	62.3
2-3 PM	4590	0.0	OFF	4590	0	0.00	0	59.5	59.5	59.5
3-4 PM	4578	0.0	OFF	4578	0	0.00	0	59.6	59.6	59.6
4-5 PM	4524	0.0	OFF	4524	0	0.00	0	59.9	59.9	59.9
5-6 PM	4222	0.0	OFF	4222	0	0.00	0	62.0	62.0	62.0
6-7 PM	3644	0.0	OFF	3644	0	0.00	0	66.0	66.0	66.0
7-8 PM	3034	0.0	2999	3034	0	1.26	49	66.9	27.8	37.4
8-9 PM	2586	0.0	3000	2586	0	0.26	2	67.5	52.4	45.0
9-10 PM	1988	0.0	3000	1988	0	0.17	0	68.2	57.3	49.7
10-11 PM	1570	0.0	3000	1570	0	0.17	0	68.8	57.4	49.7
11PM-MID	968	0.0	3000	968	0	0.18	0	69.6	57.6	49.7

"OFF" INDICATES NO ROAD WORK (ALL LANES OPEN TO TRAFFIC)

----- SITE BREAKDOWN DELAYS -----	
BREAKDOWN DURATION (MINS)	0
RANGE OF QUEUE DELAY - MIN (VEH-H) MAX	0.0
AV BREAKDOWNS PER DAY	0.00
AV QUEUE DELAY/DAY (VEH-H)	0.0
AV TOTAL DELAY/DAY (VEH-H)	0.0

----- SITE ACCIDENT DELAYS -----	
BREAKDOWN DURATION (MINS)	0
RANGE OF QUEUE DELAY - MIN (VEH-H) MAX	0
AV BREAKDOWNS PER DAY	0
AV QUEUE DELAY/DAY (VEH-H)	0
AV TOTAL DELAY/DAY (VEH-H)	0

AVERAGE ACCIDENT NUMBERS (PIA/DAY)	
MAIN ROUTE WITHOUT WORKS	0.0100
MAIN ROUTE WITH WORKS	0.0084
'DIVERSION'	0.0000
PIA: Personal Injury Accidents	
IMPACTS ON ROAD USERS	
ROAD USER COSTS PER DAY	\$1,643
CONGESTED HOURS PER DAY*	0

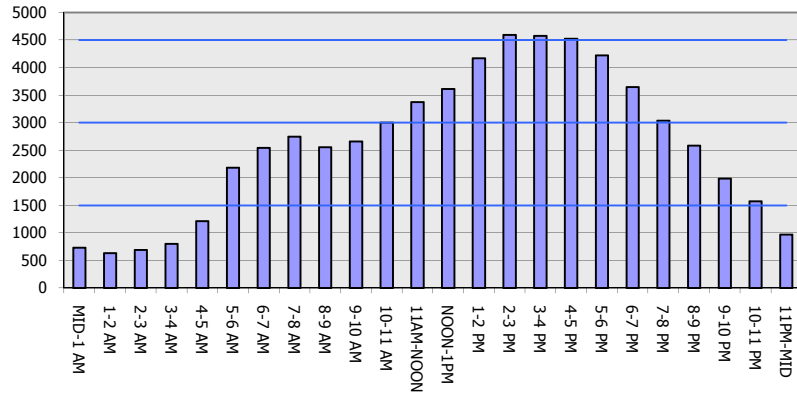
*Delays Exceeding User-Specified Maximum

**IH 94: MN 96 TO STH 35 N
NIGHTTIME CLOSURE
NO DIVERSION ROUTE (MAX QUEUE METHOD)**

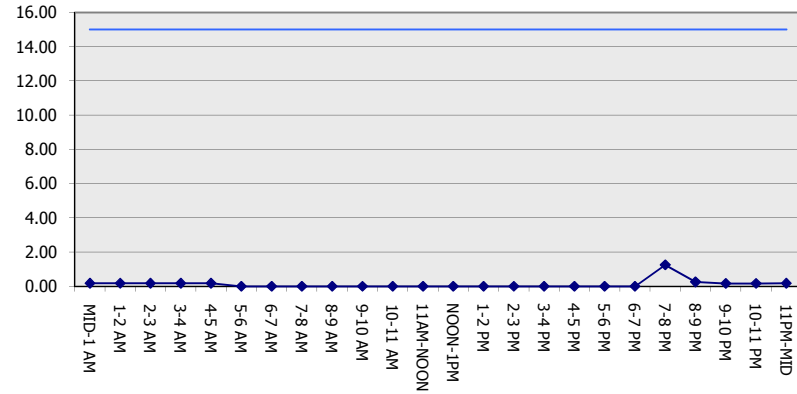
OCTOBER
Analyzed for 2009
Construction Season

GRAPHICAL REPRESENTATION OF TRAFFIC MODEL INPUT AND OUTPUT
FRIDAY WESTBOUND DIRECTION

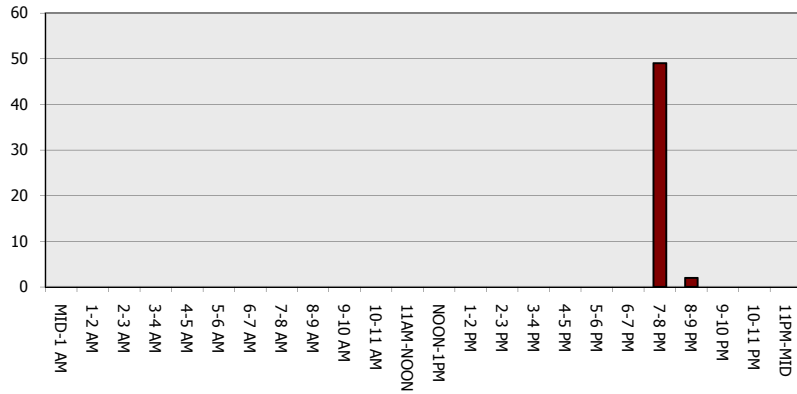
Main Route - Traffic Demand (Vehicles Per Hour)



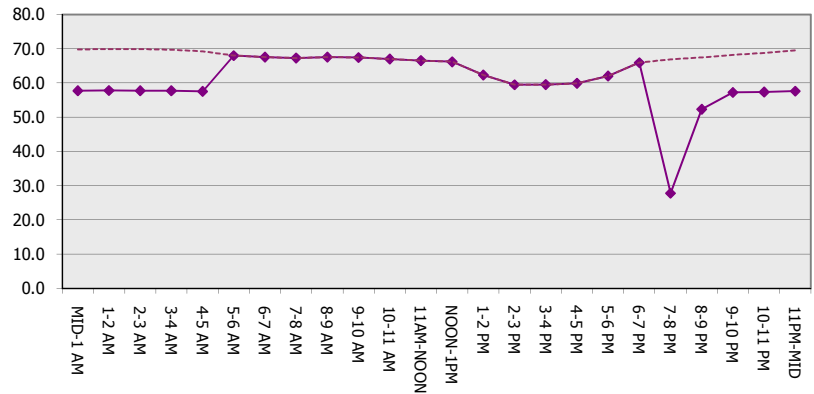
Main Route Average Delay Per Vehicle (Minutes)



Main Route - Average Queue Length (Vehicles)



Main Route - Average Speed (MPH)



IH 94: MN 96 TO STH 35 N NIGHTTIME CLOSURE NO DIVERSION ROUTE (MAX QUEUE METHOD)	OCTOBER Analyzed for 2009 Construction Season
---	--

SUMMARY OF TRAFFIC MODEL OUTPUT
FRIDAY EASTBOUND DIRECTION

TIME OF DAY	FLOWS AND CAPACITY IN VEH/HR						AVERAGE SPEEDS IN MPH			
	MAIN ROUTE		SITE CAPA CITY	FLOW		AV.DEL PER VEH (MINS)	AVERAGE QUEUE (VEH)	MAIN ROUTE		SITE
	DEMAND FLOW	PCT HEAVY		MAIN ROUTE	'DIVER TED'			WITHOUT WORK ZONE	WITH WORK ZONE	
MID-1 AM	701	0.0	3000	701	0	0.18	0	69.9	57.8	49.7
1-2 AM	515	0.0	3000	515	0	0.18	0	70.1	57.8	49.7
2-3 AM	402	0.0	3000	402	0	0.18	0	70.2	57.9	49.7
3-4 AM	466	0.0	3000	466	0	0.18	0	70.2	57.9	49.7
4-5 AM	571	0.0	3000	571	0	0.18	0	70.0	57.8	49.7
5-6 AM	1016	0.0	OFF	1016	0	0.00	0	69.5	69.5	69.5
6-7 AM	1567	0.0	OFF	1567	0	0.00	0	68.8	68.8	68.8
7-8 AM	2451	0.0	OFF	2451	0	0.00	0	67.7	67.7	67.7
8-9 AM	2761	0.0	OFF	2761	0	0.00	0	67.3	67.3	67.3
9-10 AM	3486	0.0	OFF	3486	0	0.00	0	66.4	66.4	66.4
10-11 AM	4117	0.0	OFF	4117	0	0.00	0	62.7	62.7	62.7
11AM-NOON	4203	0.0	OFF	4203	0	0.00	0	62.2	62.2	62.2
NOON-1PM	4282	0.0	OFF	4282	0	0.00	0	61.6	61.6	61.6
1-2 PM	5055	0.0	OFF	5055	0	0.00	0	56.3	56.3	56.3
2-3 PM	5369	0.0	OFF	5369	0	0.00	0	54.2	54.2	54.2
3-4 PM	5644	0.0	OFF	5644	0	0.00	0	52.3	52.3	52.3
4-5 PM	5565	0.0	OFF	5565	0	0.00	0	52.8	52.8	52.8
5-6 PM	5071	0.0	OFF	5071	0	0.00	0	56.2	56.2	56.2
6-7 PM	4662	0.0	OFF	4662	0	0.00	0	59.0	59.0	59.0
7-8 PM	3577	0.0	2999	3577	0	6.44	361	66.3	11.6	37.3
8-9 PM	2338	0.0	2999	2338	0	3.69	304	67.8	17.2	43.2
9-10 PM	1848	0.0	3000	1848	0	0.17	0	68.4	57.3	49.7
10-11 PM	1498	0.0	3000	1498	0	0.17	0	68.9	57.4	49.7
11PM-MID	1121	0.0	3000	1121	0	0.18	0	69.4	57.6	49.7

"OFF" INDICATES NO ROAD WORK (ALL LANES OPEN TO TRAFFIC)

----- SITE BREAKDOWN DELAYS -----	
BREAKDOWN DURATION (MINS)	0
RANGE OF QUEUE DELAY - MIN (VEH-H) MAX	0.0
AV BREAKDOWNS PER DAY	0.00
AV QUEUE DELAY/DAY (VEH-H)	0.0
AV TOTAL DELAY/DAY (VEH-H)	0.0

----- SITE ACCIDENT DELAYS -----	
BREAKDOWN DURATION (MINS)	0
RANGE OF QUEUE DELAY - MIN (VEH-H) MAX	0
AV BREAKDOWNS PER DAY	0
AV QUEUE DELAY/DAY (VEH-H)	0
AV TOTAL DELAY/DAY (VEH-H)	0

AVERAGE ACCIDENT NUMBERS (PIA/DAY)	
MAIN ROUTE WITHOUT WORKS	0.0109
MAIN ROUTE WITH WORKS	0.0095
'DIVERSION'	0.0000

PIA: Personal Injury Accidents

ECONOMIC IMPACT ON ROAD USERS	
ROAD USER COSTS PER DAY	\$8,999
CONGESTED HOURS PER DAY*	0

*Delays Exceeding User-Specified Maximum

**IH 94: MN 96 TO STH 35 N
NIGHTTIME CLOSURE
NO DIVERSION ROUTE (MAX QUEUE METHOD)**

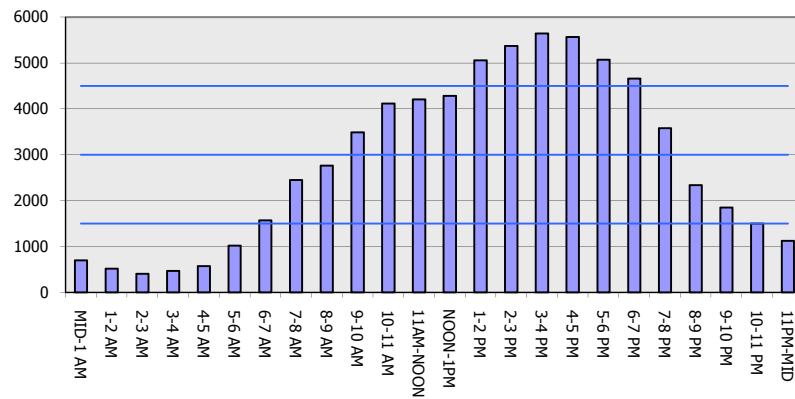
OCTOBER

Analyzed for 2009
Construction Season

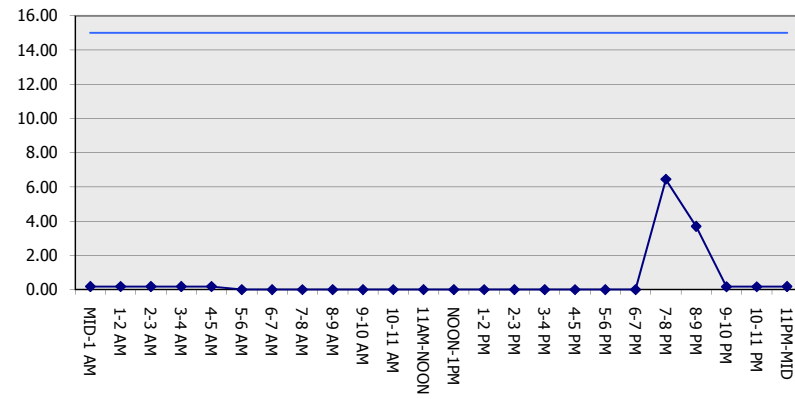
GRAPHICAL REPRESENTATION OF TRAFFIC MODEL INPUT AND OUTPUT

FRIDAY EASTBOUND DIRECTION

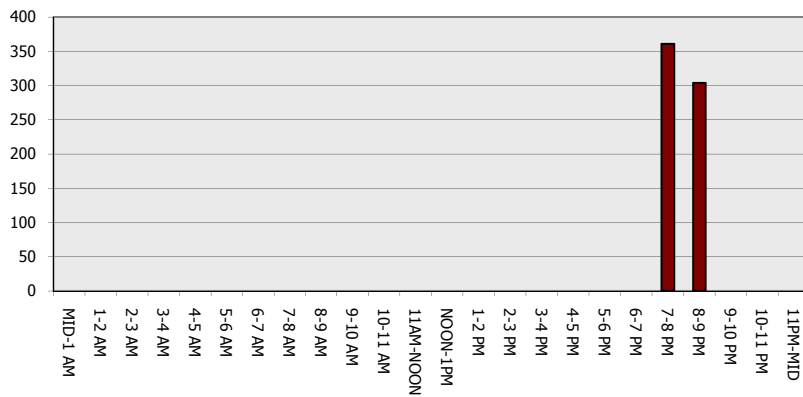
Main Route - Traffic Demand (Vehicles Per Hour)



Main Route Average Delay Per Vehicle (Minutes)



Main Route - Average Queue Length (Vehicles)



Main Route - Average Speed (MPH)

