

IH 94: MN 96 TO STH 35 N NIGHTTIME CLOSURE NO DIVERSION ROUTE (MAX QUEUE METHOD)	AUGUST
	Analyzed for 2009 Construction Season

SUMMARY OF TRAFFIC MODEL OUTPUT

FRIDAY WESTBOUND DIRECTION

TIME OF DAY	FLOWS AND CAPACITY IN VEH/HR						AVERAGE SPEEDS IN MPH				
	MAIN ROUTE		SITE CAPA CITY	FLOW		AV.DEL PER VEH (MINS)	AVERAGE QUEUE (VEH)	MAIN ROUTE		SITE	
	DEMAND FLOW	PCT HEAVY		MAIN ROUTE	'DIVER TED'			WITHOUT WORK ZONE	WITH WORK ZONE		
MID-1 AM	800	0.0	3000	800	0	0.18	0	69.7	57.8	49.7	
1-2 AM	665	0.0	3000	665	0	0.18	0	69.9	57.8	49.7	
2-3 AM	692	0.0	3000	692	0	0.18	0	69.9	57.8	49.7	
3-4 AM	805	0.0	3000	805	0	0.18	0	69.7	57.7	49.7	
4-5 AM	1339	0.0	3000	1339	0	0.17	0	69.1	57.5	49.7	
5-6 AM	2132	0.0	OFF	2132	0	0.00	0	68.1	68.1	68.1	
6-7 AM	2488	0.0	OFF	2488	0	0.00	0	67.6	67.6	67.6	
7-8 AM	2658	0.0	OFF	2658	0	0.00	0	67.4	67.4	67.4	
8-9 AM	2590	0.0	OFF	2590	0	0.00	0	67.5	67.5	67.5	
9-10 AM	2810	0.0	OFF	2810	0	0.00	0	67.3	67.3	67.3	
10-11 AM	3272	0.0	OFF	3272	0	0.00	0	66.7	66.7	66.7	
11AM-NOON	3603	0.0	OFF	3603	0	0.00	0	66.3	66.3	66.3	
NOON-1PM	3744	0.0	OFF	3744	0	0.00	0	65.3	65.3	65.3	
1-2 PM	4336	0.0	OFF	4336	0	0.00	0	61.2	61.2	61.2	
2-3 PM	4613	0.0	OFF	4613	0	0.00	0	59.4	59.4	59.4	
3-4 PM	4621	0.0	OFF	4621	0	0.00	0	59.3	59.3	59.3	
4-5 PM	4427	0.0	OFF	4427	0	0.00	0	60.6	60.6	60.6	
5-6 PM	4246	0.0	OFF	4246	0	0.00	0	61.9	61.9	61.9	
6-7 PM	3913	0.0	OFF	3913	0	0.00	0	64.1	64.1	64.1	
7-8 PM	3274	0.0	2999	3274	0	3.25	173	66.7	15.9	37.3	
8-9 PM	2744	0.0	2999	2744	0	3.08	167	67.3	16.6	38.7	
9-10 PM	2573	0.0	3000	2573	0	0.23	0	67.6	53.5	45.2	
10-11 PM	1931	0.0	3000	1931	0	0.17	0	68.3	57.3	49.7	
11PM-MID	1277	0.0	3000	1277	0	0.18	0	69.1	57.5	49.7	

"OFF" INDICATES NO ROAD WORK (ALL LANES OPEN TO TRAFFIC)

----- SITE BREAKDOWN DELAYS -----	
BREAKDOWN DURATION (MINS)	0
RANGE OF QUEUE DELAY - MIN (VEH-H) MAX	0.0
AV BREAKDOWNS PER DAY	0.00
AV QUEUE DELAY/DAY (VEH-H)	0.0
AV TOTAL DELAY/DAY (VEH-H)	0.0

----- SITE ACCIDENT DELAYS -----	
BREAKDOWN DURATION (MINS)	0
RANGE OF QUEUE DELAY - MIN (VEH-H) MAX	0
AV BREAKDOWNS PER DAY	0
AV QUEUE DELAY/DAY (VEH-H)	0
AV TOTAL DELAY/DAY (VEH-H)	0

AVERAGE ACCIDENT NUMBERS (PIA/DAY)	
MAIN ROUTE WITHOUT WORKS	0.0104
MAIN ROUTE WITH WORKS	0.0087
'DIVERSION'	0.0000
PIA: Personal Injury Accidents	
IMPACTS ON ROAD USERS	
ROAD USER COSTS PER DAY	\$5,445
CONGESTED HOURS PER DAY*	0

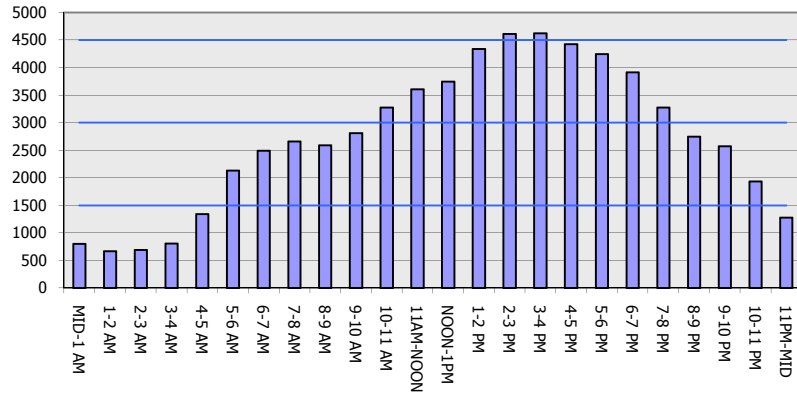
*Delays Exceeding User-Specified Maximum

**IH 94: MN 96 TO STH 35 N
NIGHTTIME CLOSURE
NO DIVERSION ROUTE (MAX QUEUE METHOD)**

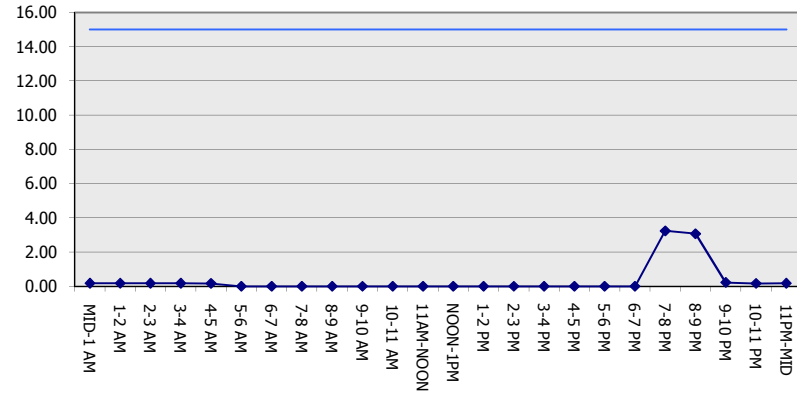
AUGUST
Analyzed for 2009
Construction Season

GRAPHICAL REPRESENTATION OF TRAFFIC MODEL INPUT AND OUTPUT
FRIDAY WESTBOUND DIRECTION

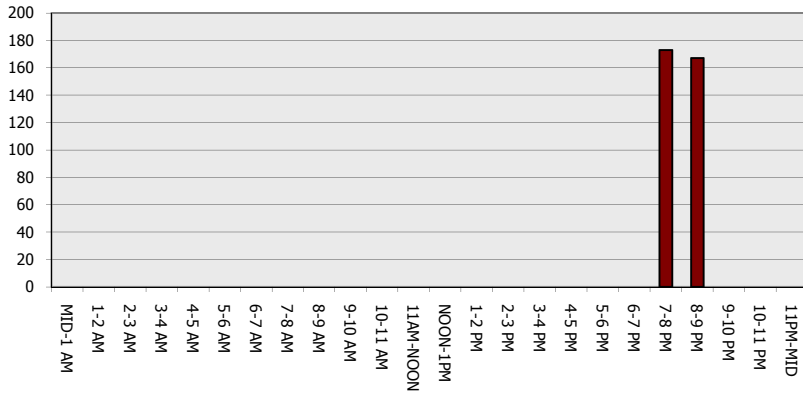
Main Route - Traffic Demand (Vehicles Per Hour)



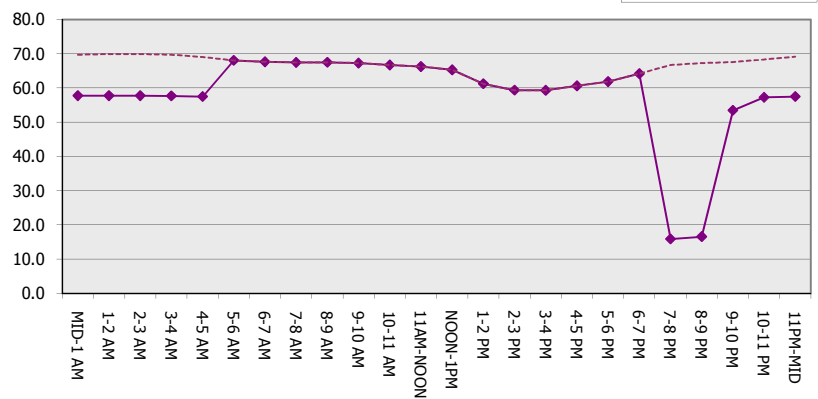
Main Route Average Delay Per Vehicle (Minutes)



Main Route - Average Queue Length (Vehicles)



Main Route - Average Speed (MPH)



IH 94: MN 96 TO STH 35 N NIGHTTIME CLOSURE NO DIVERSION ROUTE (MAX QUEUE METHOD)	AUGUST
	Analyzed for 2009 Construction Season

SUMMARY OF TRAFFIC MODEL OUTPUT

FRIDAY EASTBOUND DIRECTION

TIME OF DAY	FLOWS AND CAPACITY IN VEH/HR						AVERAGE SPEEDS IN MPH			
	MAIN ROUTE		SITE CAPA CITY	FLOW		AV.DEL PER VEH (MINS)	AVERAGE QUEUE (VEH)	MAIN ROUTE		SITE
	DEMAND FLOW	PCT HEAVY		MAIN ROUTE	'DIVER TED'			WITHOUT WORK ZONE	WITH WORK ZONE	
MID-1 AM	899	0.0	3000	899	0	0.18	0	69.6	57.7	49.7
1-2 AM	584	0.0	3000	584	0	0.18	0	70.0	57.8	49.7
2-3 AM	512	0.0	3000	512	0	0.18	0	70.1	57.8	49.7
3-4 AM	511	0.0	3000	511	0	0.18	0	70.1	57.8	49.7
4-5 AM	644	0.0	3000	644	0	0.18	0	69.9	57.8	49.7
5-6 AM	1086	0.0	OFF	1086	0	0.00	0	69.4	69.4	69.4
6-7 AM	1812	0.0	OFF	1812	0	0.00	0	68.5	68.5	68.5
7-8 AM	2659	0.0	OFF	2659	0	0.00	0	67.4	67.4	67.4
8-9 AM	3171	0.0	OFF	3171	0	0.00	0	66.8	66.8	66.8
9-10 AM	4051	0.0	OFF	4051	0	0.00	0	63.2	63.2	63.2
10-11 AM	4982	0.0	OFF	4982	0	0.00	0	56.8	56.8	56.8
11AM-NOON	5053	0.0	OFF	5053	0	0.00	0	56.3	56.3	56.3
NOON-1PM	5048	0.0	OFF	5048	0	0.00	0	56.4	56.4	56.4
1-2 PM	5837	0.0	OFF	5837	0	0.00	0	51.0	51.0	51.0
2-3 PM	6056	0.0	OFF	6056	0	0.00	0	49.5	49.5	49.5
3-4 PM	5869	0.0	OFF	5869	0	0.00	0	50.7	50.7	50.7
4-5 PM	5948	0.0	OFF	5948	0	0.00	0	50.2	50.2	50.2
5-6 PM	5707	0.0	OFF	5707	0	0.00	0	51.9	51.9	51.9
6-7 PM	5447	0.0	OFF	5447	0	0.00	0	53.7	53.7	53.7
7-8 PM	3914	0.0	2999	3914	0	9.43	541	64.1	10.1	37.3
8-9 PM	2759	0.0	2999	2759	0	15.81	852	67.3	8.4	37.3
9-10 PM	2041	0.0	2999	2041	0	2.10	263	68.2	25.0	45.7
10-11 PM	1741	0.0	3000	1741	0	0.17	0	68.6	57.3	49.7
11PM-MID	1313	0.0	3000	1313	0	0.17	0	69.1	57.5	49.7

"OFF" INDICATES NO ROAD WORK (ALL LANES OPEN TO TRAFFIC)

----- SITE BREAKDOWN DELAYS -----	
BREAKDOWN DURATION (MINS)	0
RANGE OF QUEUE DELAY - MIN (VEH-H) MAX	0.0
AV BREAKDOWNS PER DAY	0.00
AV QUEUE DELAY/DAY (VEH-H)	0.0
AV TOTAL DELAY/DAY (VEH-H)	0.0

----- SITE ACCIDENT DELAYS -----	
BREAKDOWN DURATION (MINS)	0
RANGE OF QUEUE DELAY - MIN (VEH-H) MAX	0
AV BREAKDOWNS PER DAY	0
AV QUEUE DELAY/DAY (VEH-H)	0
AV TOTAL DELAY/DAY (VEH-H)	0

AVERAGE ACCIDENT NUMBERS (PIA/DAY)	
MAIN ROUTE WITHOUT WORKS	0.0124
MAIN ROUTE WITH WORKS	0.0107
'DIVERSION'	0.0000

PIA: Personal Injury Accidents

ECONOMIC IMPACT ON ROAD USERS	
ROAD USER COSTS PER DAY	\$22,271
CONGESTED HOURS PER DAY*	0

*Delays Exceeding User-Specified Maximum

**IH 94: MN 96 TO STH 35 N
NIGHTTIME CLOSURE
NO DIVERSION ROUTE (MAX QUEUE METHOD)**

AUGUST
Analyzed for 2009
Construction Season

GRAPHICAL REPRESENTATION OF TRAFFIC MODEL INPUT AND OUTPUT
FRIDAY EASTBOUND DIRECTION

