

<b>IH 94: MN 96 TO STH 35 N                  NIGHTTIME 2 LANE CLOSURE                  NO DIVERSION ROUTE (MAX QUEUE METHOD)</b>	<b>MAY</b>
	Analyzed for 2009 Construction Season

**SUMMARY OF TRAFFIC MODEL OUTPUT**

SUNDAY WESTBOUND DIRECTION

TIME OF DAY	FLOWS AND CAPACITY IN VEH/HR						AVERAGE SPEEDS IN MPH				
	MAIN ROUTE		SITE CAPA CITY	FLOW		AV.DEL PER VEH (MINS)	AVERAGE QUEUE (VEH)	MAIN ROUTE		SITE	
	DEMAND FLOW	PCT HEAVY		MAIN ROUTE	'DIVER TED'			WITHOUT WORK ZONE	WITH WORK ZONE		
MID-1 AM	467	0.0	1499	467	0	4.16	334	70.2	16.6	38.6	
1-2 AM	386	0.0	1500	386	0	0.26	0	70.2	53.7	44.0	
2-3 AM	279	0.0	1500	279	0	0.26	0	70.2	54.0	44.3	
3-4 AM	281	0.0	1500	281	0	0.26	0	70.2	54.0	44.3	
4-5 AM	309	0.0	1500	309	0	0.26	0	70.2	53.9	44.3	
5-6 AM	407	0.0	1500	407	0	0.26	0	70.2	53.6	43.8	
6-7 AM	580	0.0	1500	580	0	0.27	0	70.0	53.0	43.2	
7-8 AM	899	0.0	1500	899	0	0.29	0	69.6	52.0	42.0	
8-9 AM	1394	0.0	1499	1394	0	0.57	3	69.0	41.6	33.7	
9-10 AM	1952	0.0	OFF	1952	0	0.00	0	68.3	68.2	68.2	
10-11 AM	2638	0.0	OFF	2638	0	0.00	0	67.4	67.4	67.4	
11AM-NOON	3266	0.0	OFF	3266	0	0.00	0	66.7	66.7	66.7	
NOON-1PM	3531	0.0	OFF	3531	0	0.00	0	66.3	66.3	66.3	
1-2 PM	3916	0.0	OFF	3916	0	0.00	0	64.1	64.1	64.1	
2-3 PM	4497	0.0	OFF	4497	0	0.00	0	60.1	60.1	60.1	
3-4 PM	4972	0.0	OFF	4972	0	0.00	0	56.9	56.9	56.9	
4-5 PM	5104	0.0	OFF	5104	0	0.00	0	56.0	56.0	56.0	
5-6 PM	5004	0.0	OFF	5004	0	0.00	0	56.7	56.7	56.7	
6-7 PM	4537	0.0	OFF	4537	0	0.00	0	59.9	59.9	59.9	
7-8 PM	3957	0.0	1499	2705	1252	35.63+	949	63.8	4.3	30.8	
8-9 PM	3444	0.0	1499	1500	1944	48.24+	1251	66.4	3.9	30.8	
9-10 PM	2660	0.0	1499	1473	1187	46.85+	1213	67.4	4.0	30.8	
10-11 PM	1980	0.0	1499	1497	483	46.46+	1202	68.2	4.0	30.8	
11PM-MID	1129	0.0	1499	1129	0	40.14+	1037	69.3	4.1	30.8	

"OFF" INDICATES NO ROAD WORK (ALL LANES OPEN TO TRAFFIC)

+ INDICATES QUEUEING EXCEEDS USER-SPECIFIED MAXIMUM LIMIT

*----- SITE BREAKDOWN DELAYS -----*	
BREAKDOWN DURATION (MINS)	0
RANGE OF QUEUE DELAY - MIN (VEH-H) MAX	0.0
AV BREAKDOWNS PER DAY	0.00
AV QUEUE DELAY/DAY (VEH-H)	0.0
AV TOTAL DELAY/DAY (VEH-H)	0.0

*----- SITE ACCIDENT DELAYS -----*	
BREAKDOWN DURATION (MINS)	0
RANGE OF QUEUE DELAY - MIN (VEH-H) MAX	0
AV BREAKDOWNS PER DAY	0
AV QUEUE DELAY/DAY (VEH-H)	0
AV TOTAL DELAY/DAY (VEH-H)	0

AVERAGE ACCIDENT NUMBERS (PIA/DAY)	
MAIN ROUTE WITHOUT WORKS	0.0092
MAIN ROUTE WITH WORKS	0.0069
'DIVERSION'	0.0018
PIA: Personal Injury Accidents	
IMPACTS ON ROAD USERS	
ROAD USER COSTS PER DAY	\$149,990
CONGESTED HOURS PER DAY*	5

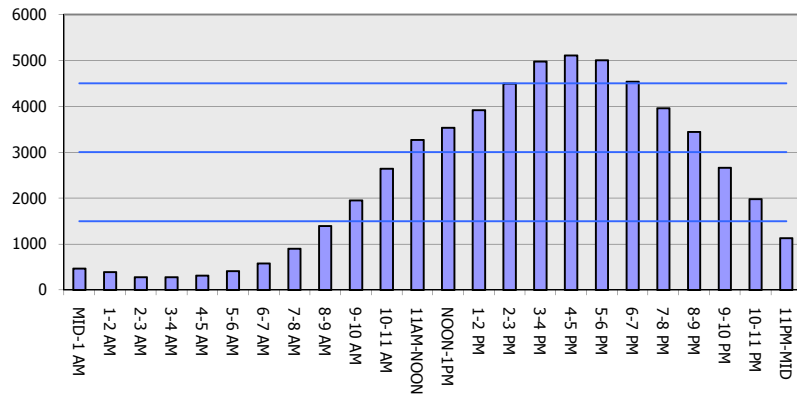
\*Delays Exceeding User-Specified Maximum

**IH 94: MN 96 TO STH 35 N  
NIGHTTIME 2 LANE CLOSURE  
NO DIVERSION ROUTE (MAX QUEUE METHOD)**

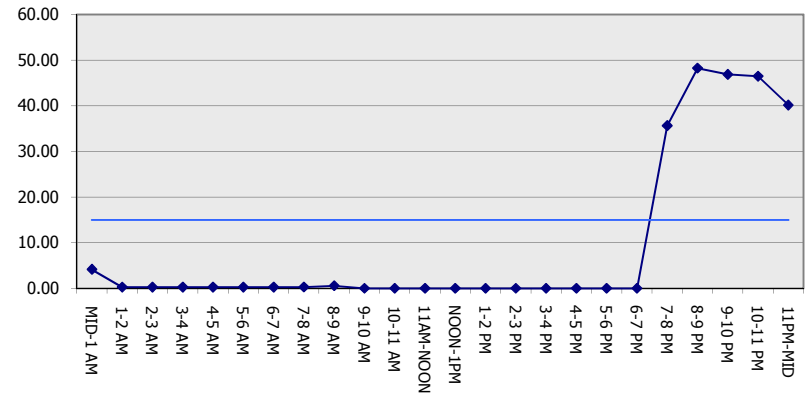
**MAY**  
Analyzed for 2009  
Construction Season

**GRAPHICAL REPRESENTATION OF TRAFFIC MODEL INPUT AND OUTPUT**  
**SUNDAY WESTBOUND DIRECTION**

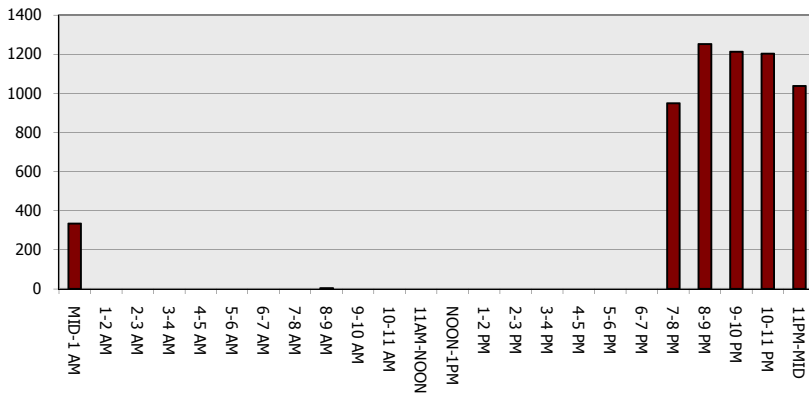
**Main Route - Traffic Demand (Vehicles Per Hour)**



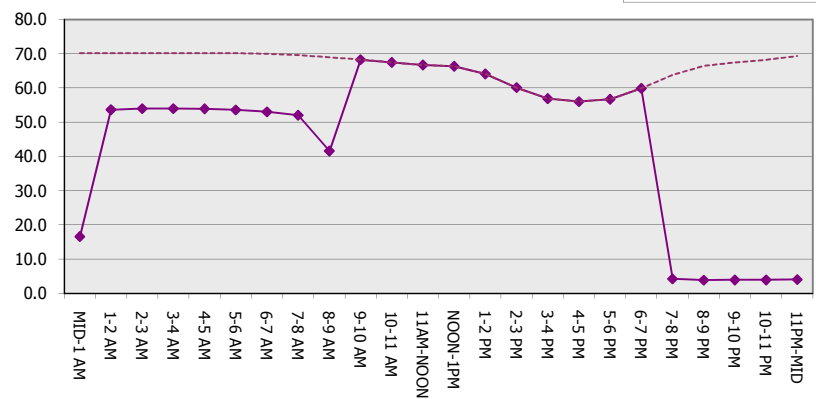
**Main Route Average Delay Per Vehicle (Minutes)**



**Main Route - Average Queue Length (Vehicles)**



**Main Route - Average Speed (MPH)**



<b>IH 94: MN 96 TO STH 35 N                  NIGHTTIME 2 LANE CLOSURE                  NO DIVERSION ROUTE (MAX QUEUE METHOD)</b>	<b>MAY</b>
	Analyzed for 2009 Construction Season

**SUMMARY OF TRAFFIC MODEL OUTPUT**

SUNDAY EASTBOUND DIRECTION

TIME OF DAY	FLOWS AND CAPACITY IN VEH/HR						AVERAGE SPEEDS IN MPH			
	MAIN ROUTE		SITE CAPA CITY	FLOW		AV.DEL PER VEH (MINS)	AVERAGE QUEUE (VEH)	MAIN ROUTE		SITE
	DEMAND FLOW	PCT HEAVY		MAIN ROUTE	'DIVER TED'			WITHOUT WORK ZONE	WITH WORK ZONE	
MID-1 AM	455	0.0	1500	455	0	0.27	0	70.2	53.5	43.7
1-2 AM	294	0.0	1500	294	0	0.26	0	70.2	54.0	44.3
2-3 AM	240	0.0	1500	240	0	0.25	0	70.2	54.1	44.5
3-4 AM	220	0.0	1500	220	0	0.25	0	70.2	54.2	44.6
4-5 AM	273	0.0	1500	273	0	0.26	0	70.2	54.0	44.4
5-6 AM	420	0.0	1500	420	0	0.27	0	70.2	53.5	43.8
6-7 AM	768	0.0	1500	768	0	0.28	0	69.8	52.4	42.5
7-8 AM	1225	0.0	1499	1225	0	0.38	0	69.2	48.3	37.7
8-9 AM	1836	0.0	1499	1836	0	3.70	123	68.4	14.1	30.8
9-10 AM	2657	0.0	OFF	2657	0	0.17	16	67.4	56.3	56.3
10-11 AM	3447	0.0	OFF	3447	0	0.00	0	66.4	66.4	66.4
11AM-NOON	3670	0.0	OFF	3670	0	0.00	0	65.8	65.8	65.8
NOON-1PM	3790	0.0	OFF	3790	0	0.00	0	65.0	65.0	65.0
1-2 PM	3816	0.0	OFF	3816	0	0.00	0	64.8	64.8	64.8
2-3 PM	3745	0.0	OFF	3745	0	0.00	0	65.3	65.3	65.3
3-4 PM	3679	0.0	OFF	3679	0	0.00	0	65.7	65.7	65.7
4-5 PM	3631	0.0	OFF	3631	0	0.00	0	66.1	66.1	66.1
5-6 PM	3291	0.0	OFF	3291	0	0.00	0	66.6	66.6	66.6
6-7 PM	2797	0.0	OFF	2797	0	0.00	0	67.3	67.3	67.3
7-8 PM	2345	0.0	1499	2345	0	16.10	453	67.8	5.8	30.8
8-9 PM	1811	0.0	1500	1811	0	39.87+	1031	68.5	4.1	30.8
9-10 PM	1359	0.0	1500	1359	0	43.01+	1111	69.1	4.0	30.8
10-11 PM	960	0.0	1500	960	0	29.41	762	69.6	4.5	30.8
11PM-MID	775	0.0	1499	775	0	2.07	167	69.7	23.2	40.0

"OFF" INDICATES NO ROAD WORK (ALL LANES OPEN TO TRAFFIC)

+ INDICATES QUEUEING EXCEEDS USER-SPECIFIED MAXIMUM LIMIT

BREAKDOWN DURATION (MINS)	0
RANGE OF QUEUE DELAY - MIN (VEH-H) MAX	0.0
AV BREAKDOWNS PER DAY	0.00
AV QUEUE DELAY/DAY (VEH-H)	0.0
AV TOTAL DELAY/DAY (VEH-H)	0.0

BREAKDOWN DURATION (MINS)	0
RANGE OF QUEUE DELAY - MIN (VEH-H) MAX	0
AV BREAKDOWNS PER DAY	0
AV QUEUE DELAY/DAY (VEH-H)	0
AV TOTAL DELAY/DAY (VEH-H)	0

MAIN ROUTE WITHOUT WORKS	0.0076
MAIN ROUTE WITH WORKS	0.0062
'DIVERSION'	0.0000

PIA: Personal Injury Accidents

ROAD USER COSTS PER DAY	\$54,133
CONGESTED HOURS PER DAY*	2

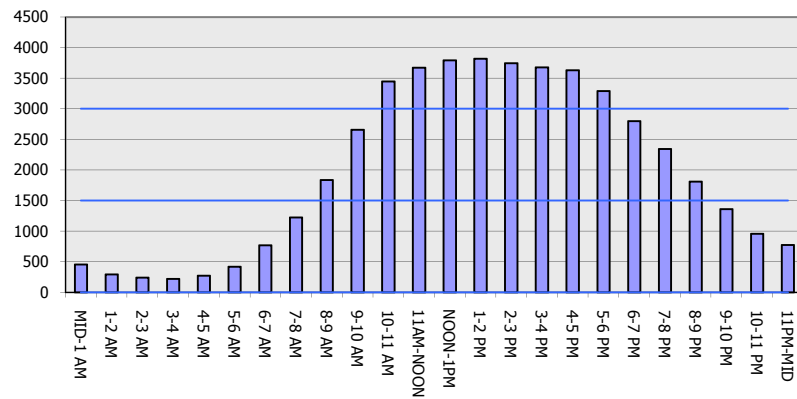
\*Delays Exceeding User-Specified Maximum

**IH 94: MN 96 TO STH 35 N  
NIGHTTIME 2 LANE CLOSURE  
NO DIVERSION ROUTE (MAX QUEUE METHOD)**

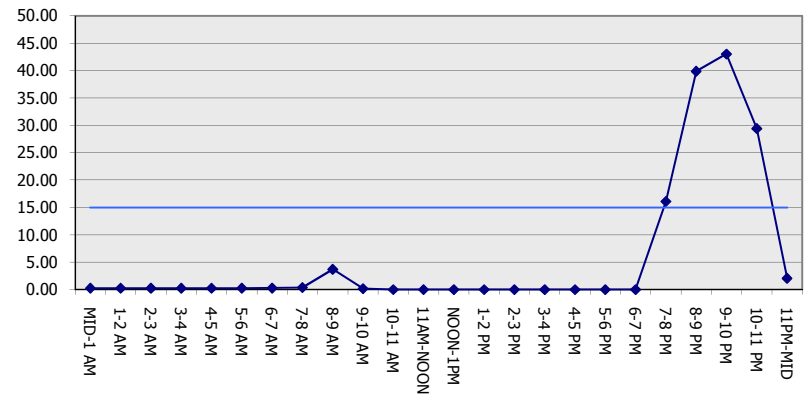
**MAY**  
Analyzed for 2009  
Construction Season

**GRAPHICAL REPRESENTATION OF TRAFFIC MODEL INPUT AND OUTPUT**  
**SUNDAY EASTBOUND DIRECTION**

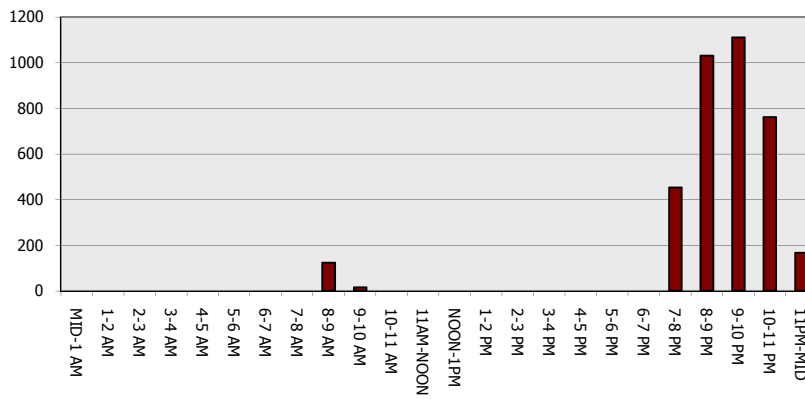
**Main Route - Traffic Demand (Vehicles Per Hour)**



**Main Route Average Delay Per Vehicle (Minutes)**



**Main Route - Average Queue Length (Vehicles)**



**Main Route - Average Speed (MPH)**

