

<b>IH 94: MN 96 TO STH 35 N NIGHTTIME CLOSURE NO DIVERSION ROUTE (MAX QUEUE METHOD)</b>	<b>MAY</b>
	Analyzed for 2009 Construction Season

**SUMMARY OF TRAFFIC MODEL OUTPUT**

SUNDAY WESTBOUND DIRECTION

TIME OF DAY	FLOWS AND CAPACITY IN VEH/HR						AVERAGE SPEEDS IN MPH				
	MAIN ROUTE		SITE CAPA CITY	FLOW		AV.DEL PER VEH (MINS)	AVERAGE QUEUE (VEH)	MAIN ROUTE		SITE	
	DEMAND FLOW	PCT HEAVY		MAIN ROUTE	'DIVER TED'			WITHOUT WORK ZONE	WITH WORK ZONE		
MID-1 AM	467	0.0	3000	467	0	0.18	0	70.2	57.9	49.7	
1-2 AM	386	0.0	3000	386	0	0.18	0	70.2	57.9	49.7	
2-3 AM	279	0.0	3000	279	0	0.18	0	70.2	57.9	49.7	
3-4 AM	281	0.0	3000	281	0	0.18	0	70.2	57.9	49.7	
4-5 AM	309	0.0	3000	309	0	0.18	0	70.2	57.9	49.7	
5-6 AM	407	0.0	3000	407	0	0.18	0	70.2	57.9	49.7	
6-7 AM	580	0.0	3000	580	0	0.18	0	70.0	57.8	49.7	
7-8 AM	899	0.0	3000	899	0	0.18	0	69.6	57.7	49.7	
8-9 AM	1394	0.0	3000	1394	0	0.17	0	69.0	57.5	49.7	
9-10 AM	1952	0.0	OFF	1952	0	0.00	0	68.3	68.3	68.3	
10-11 AM	2638	0.0	OFF	2638	0	0.00	0	67.4	67.4	67.4	
11AM-NOON	3266	0.0	OFF	3266	0	0.00	0	66.7	66.7	66.7	
NOON-1PM	3531	0.0	OFF	3531	0	0.00	0	66.3	66.3	66.3	
1-2 PM	3916	0.0	OFF	3916	0	0.00	0	64.1	64.1	64.1	
2-3 PM	4497	0.0	OFF	4497	0	0.00	0	60.1	60.1	60.1	
3-4 PM	4972	0.0	OFF	4972	0	0.00	0	56.9	56.9	56.9	
4-5 PM	5104	0.0	OFF	5104	0	0.00	0	56.0	56.0	56.0	
5-6 PM	5004	0.0	OFF	5004	0	0.00	0	56.7	56.7	56.7	
6-7 PM	4537	0.0	OFF	4537	0	0.00	0	59.9	59.9	59.9	
7-8 PM	3957	0.0	2999	3957	0	8.75	512	63.8	10.4	37.3	
8-9 PM	3444	0.0	2999	3444	0	22.42	1219	66.4	7.8	37.3	
9-10 PM	2660	0.0	2999	2660	0	23.53	1276	67.4	7.7	37.3	
10-11 PM	1980	0.0	2999	1980	0	9.86	598	68.2	10.3	43.3	
11PM-MID	1129	0.0	3000	1129	0	0.18	0	69.3	57.3	49.7	

**"OFF" INDICATES NO ROAD WORK (ALL LANES OPEN TO TRAFFIC)**

*----- SITE BREAKDOWN DELAYS -----*	
BREAKDOWN DURATION (MINS)	0
RANGE OF QUEUE DELAY - MIN (VEH-H) MAX	0.0
AV BREAKDOWNS PER DAY	0.00
AV QUEUE DELAY/DAY (VEH-H)	0.0
AV TOTAL DELAY/DAY (VEH-H)	0.0

*----- SITE ACCIDENT DELAYS -----*	
BREAKDOWN DURATION (MINS)	0
RANGE OF QUEUE DELAY - MIN (VEH-H) MAX	0
AV BREAKDOWNS PER DAY	0
AV QUEUE DELAY/DAY (VEH-H)	0
AV TOTAL DELAY/DAY (VEH-H)	0

AVERAGE ACCIDENT NUMBERS (PIA/DAY)	
MAIN ROUTE WITHOUT WORKS	0.0092
MAIN ROUTE WITH WORKS	0.0072
'DIVERSION'	0.0000
PIA: Personal Injury Accidents	
IMPACTS ON ROAD USERS	
ROAD USER COSTS PER DAY	\$52,954
CONGESTED HOURS PER DAY*	0

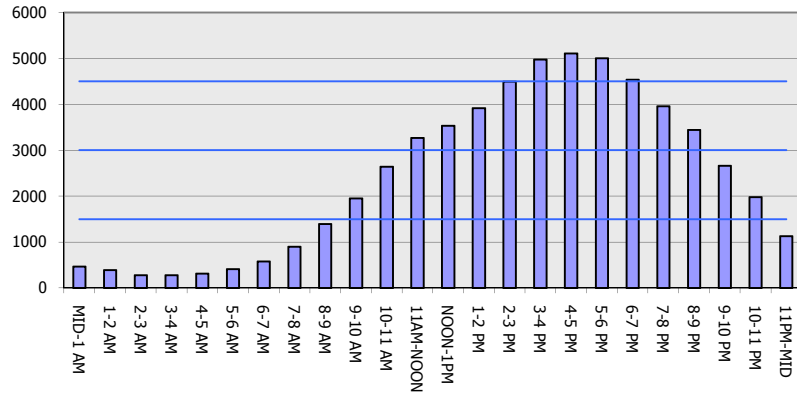
\*Delays Exceeding User-Specified Maximum

**IH 94: MN 96 TO STH 35 N  
NIGHTTIME CLOSURE  
NO DIVERSION ROUTE (MAX QUEUE METHOD)**

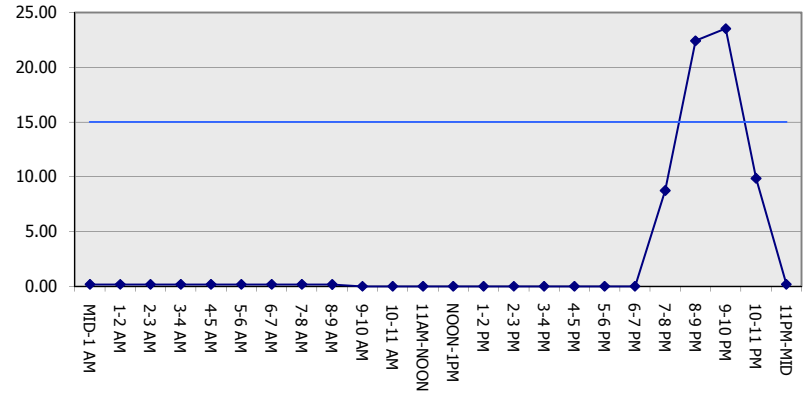
**MAY**  
Analyzed for 2009  
Construction Season

**GRAPHICAL REPRESENTATION OF TRAFFIC MODEL INPUT AND OUTPUT**  
**SUNDAY WESTBOUND DIRECTION**

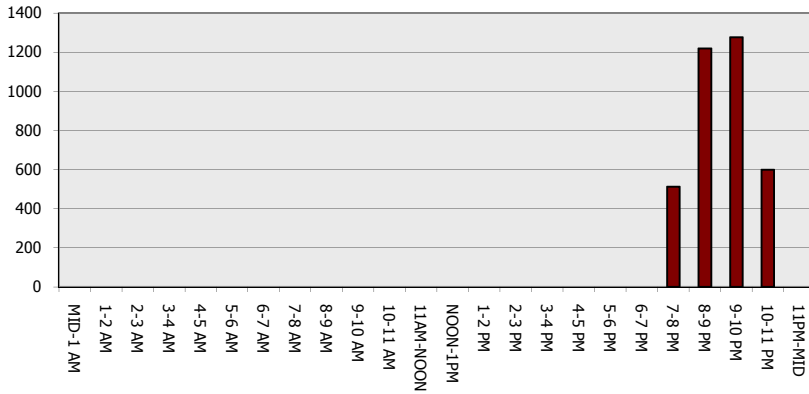
**Main Route - Traffic Demand (Vehicles Per Hour)**



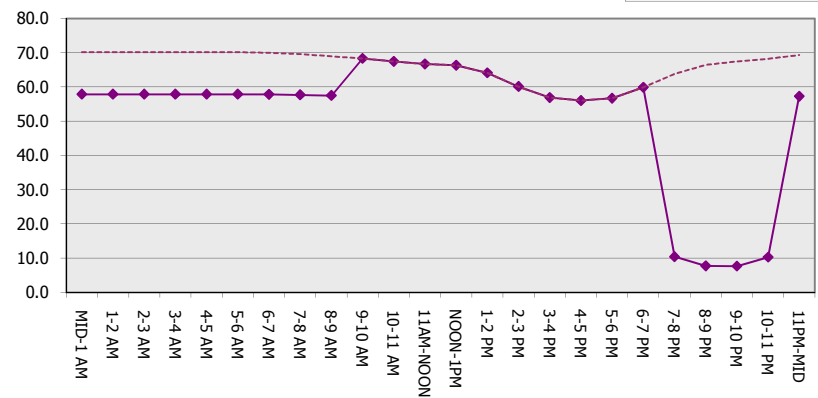
**Main Route Average Delay Per Vehicle (Minutes)**



**Main Route - Average Queue Length (Vehicles)**



**Main Route - Average Speed (MPH)**



<b>IH 94: MN 96 TO STH 35 N                  NIGHTTIME CLOSURE                  NO DIVERSION ROUTE (MAX QUEUE METHOD)</b>	<b>MAY</b>
	Analyzed for 2009 Construction Season

**SUMMARY OF TRAFFIC MODEL OUTPUT**

SUNDAY EASTBOUND DIRECTION

TIME OF DAY	FLOWS AND CAPACITY IN VEH/HR						AVERAGE SPEEDS IN MPH			
	MAIN ROUTE		SITE CAPA CITY	FLOW		AV.DEL PER VEH (MINS)	AVERAGE QUEUE (VEH)	MAIN ROUTE		SITE
	DEMAND FLOW	PCT HEAVY		MAIN ROUTE	'DIVER TED'			WITHOUT WORK ZONE	WITH WORK ZONE	
MID-1 AM	455	0.0	3000	455	0	0.18	0	70.2	57.9	49.7
1-2 AM	294	0.0	3000	294	0	0.18	0	70.2	57.9	49.7
2-3 AM	240	0.0	3000	240	0	0.18	0	70.2	57.9	49.7
3-4 AM	220	0.0	3000	220	0	0.18	0	70.2	57.9	49.7
4-5 AM	273	0.0	3000	273	0	0.18	0	70.2	57.9	49.7
5-6 AM	420	0.0	3000	420	0	0.18	0	70.2	57.9	49.7
6-7 AM	768	0.0	3000	768	0	0.18	0	69.8	57.8	49.7
7-8 AM	1225	0.0	3000	1225	0	0.18	0	69.2	57.6	49.7
8-9 AM	1836	0.0	3000	1836	0	0.17	0	68.4	57.3	49.7
9-10 AM	2657	0.0	OFF	2657	0	0.00	0	67.4	67.4	67.4
10-11 AM	3447	0.0	OFF	3447	0	0.00	0	66.4	66.4	66.4
11AM-NOON	3670	0.0	OFF	3670	0	0.00	0	65.8	65.8	65.8
NOON-1PM	3790	0.0	OFF	3790	0	0.00	0	65.0	65.0	65.0
1-2 PM	3816	0.0	OFF	3816	0	0.00	0	64.8	64.8	64.8
2-3 PM	3745	0.0	OFF	3745	0	0.00	0	65.3	65.3	65.3
3-4 PM	3679	0.0	OFF	3679	0	0.00	0	65.7	65.7	65.7
4-5 PM	3631	0.0	OFF	3631	0	0.00	0	66.1	66.1	66.1
5-6 PM	3291	0.0	OFF	3291	0	0.00	0	66.6	66.6	66.6
6-7 PM	2797	0.0	OFF	2797	0	0.00	0	67.3	67.3	67.3
7-8 PM	2345	0.0	3000	2345	0	0.17	0	67.8	57.1	49.7
8-9 PM	1811	0.0	3000	1811	0	0.17	0	68.5	57.3	49.7
9-10 PM	1359	0.0	3000	1359	0	0.17	0	69.1	57.5	49.7
10-11 PM	960	0.0	3000	960	0	0.18	0	69.6	57.6	49.7
11PM-MID	775	0.0	3000	775	0	0.18	0	69.7	57.8	49.7

**"OFF" INDICATES NO ROAD WORK (ALL LANES OPEN TO TRAFFIC)**

*----- SITE BREAKDOWN DELAYS -----*	
BREAKDOWN DURATION (MINS)	0
RANGE OF QUEUE DELAY - MIN (VEH-H) MAX	0.0
AV BREAKDOWNS PER DAY	0.00
AV QUEUE DELAY/DAY (VEH-H)	0.0
AV TOTAL DELAY/DAY (VEH-H)	0.0

*----- SITE ACCIDENT DELAYS -----*	
BREAKDOWN DURATION (MINS)	0
RANGE OF QUEUE DELAY - MIN (VEH-H) MAX	0
AV BREAKDOWNS PER DAY	0
AV QUEUE DELAY/DAY (VEH-H)	0
AV TOTAL DELAY/DAY (VEH-H)	0

AVERAGE ACCIDENT NUMBERS (PIA/DAY)	
MAIN ROUTE WITHOUT WORKS	0.0076
MAIN ROUTE WITH WORKS	0.0062
'DIVERSION'	0.0000

PIA: Personal Injury Accidents

ECONOMIC IMPACT ON ROAD USERS	
ROAD USER COSTS PER DAY	\$614
CONGESTED HOURS PER DAY*	0

\*Delays Exceeding User-Specified Maximum

**IH 94: MN 96 TO STH 35 N  
NIGHTTIME CLOSURE  
NO DIVERSION ROUTE (MAX QUEUE METHOD)**

**MAY**  
Analyzed for 2009  
Construction Season

**GRAPHICAL REPRESENTATION OF TRAFFIC MODEL INPUT AND OUTPUT**  
**SUNDAY EASTBOUND DIRECTION**

