

IH 94: MN 96 TO STH 35 N NIGHTTIME 2 LANE CLOSURE NO DIVERSION ROUTE (MAX QUEUE METHOD)	MAY
	Analyzed for 2009 Construction Season

SUMMARY OF TRAFFIC MODEL OUTPUT

FRIDAY WESTBOUND DIRECTION

TIME OF DAY	FLOWS AND CAPACITY IN VEH/HR						AVERAGE SPEEDS IN MPH			
	MAIN ROUTE		SITE CAPA CITY	FLOW		AV.DEL PER VEH (MINS)	AVERAGE QUEUE (VEH)	MAIN ROUTE		SITE
	DEMAND FLOW	PCT HEAVY		MAIN ROUTE	'DIVER TED'			WITHOUT WORK ZONE	WITH WORK ZONE	
MID-1 AM	752	0.0	1499	752	0	19.75	543	69.8	5.3	34.5
1-2 AM	701	0.0	1500	701	0	0.45	14	69.9	45.7	42.7
2-3 AM	681	0.0	1500	681	0	0.28	0	69.9	52.7	42.8
3-4 AM	773	0.0	1500	773	0	0.28	0	69.8	52.4	42.5
4-5 AM	1264	0.0	1499	1264	0	0.40	0	69.2	47.4	36.7
5-6 AM	2171	0.0	OFF	2171	0	0.00	0	68.1	68.1	68.1
6-7 AM	2902	0.0	OFF	2902	0	0.00	0	67.1	67.1	67.1
7-8 AM	2883	0.0	OFF	2883	0	0.00	0	67.1	67.1	67.1
8-9 AM	2645	0.0	OFF	2645	0	0.00	0	67.4	67.4	67.4
9-10 AM	2735	0.0	OFF	2735	0	0.00	0	67.3	67.3	67.3
10-11 AM	2838	0.0	OFF	2838	0	0.00	0	67.2	67.2	67.2
11AM-NOON	3095	0.0	OFF	3095	0	0.00	0	66.9	66.9	66.9
NOON-1PM	3463	0.0	OFF	3463	0	0.00	0	66.4	66.4	66.4
1-2 PM	3870	0.0	OFF	3870	0	0.00	0	64.4	64.4	64.4
2-3 PM	3990	0.0	OFF	3990	0	0.00	0	63.6	63.6	63.6
3-4 PM	4232	0.0	OFF	4232	0	0.00	0	61.9	61.9	61.9
4-5 PM	4278	0.0	OFF	4278	0	0.00	0	61.6	61.6	61.6
5-6 PM	4095	0.0	OFF	4095	0	0.00	0	62.9	62.9	62.9
6-7 PM	3567	0.0	OFF	3567	0	0.00	0	66.3	66.3	66.3
7-8 PM	2961	0.0	1499	2961	0	27.05+	757	67.1	4.8	30.8
8-9 PM	2696	0.0	1499	1402	1293	47.35+	1226	67.4	3.9	30.8
9-10 PM	2291	0.0	1499	1438	853	46.98+	1216	67.9	4.0	30.8
10-11 PM	1832	0.0	1499	1406	427	45.67+	1181	68.4	4.0	30.8
11PM-MID	1195	0.0	1499	1195	0	42.09+	1088	69.2	4.0	30.8

"OFF" INDICATES NO ROAD WORK (ALL LANES OPEN TO TRAFFIC)

+ INDICATES QUEUEING EXCEEDS USER-SPECIFIED MAXIMUM LIMIT

----- SITE BREAKDOWN DELAYS -----	
BREAKDOWN DURATION (MINS)	0
RANGE OF QUEUE DELAY - MIN (VEH-H) MAX	0.0
AV BREAKDOWNS PER DAY	0.00
AV QUEUE DELAY/DAY (VEH-H)	0.0
AV TOTAL DELAY/DAY (VEH-H)	0.0

----- SITE ACCIDENT DELAYS -----	
BREAKDOWN DURATION (MINS)	0
RANGE OF QUEUE DELAY - MIN (VEH-H) MAX	0
AV BREAKDOWNS PER DAY	0
AV QUEUE DELAY/DAY (VEH-H)	0
AV TOTAL DELAY/DAY (VEH-H)	0

AVERAGE ACCIDENT NUMBERS (PIA/DAY)	
MAIN ROUTE WITHOUT WORKS	0.0099
MAIN ROUTE WITH WORKS	0.0081
'DIVERSION'	0.0009
PIA: Personal Injury Accidents	
IMPACTS ON ROAD USERS	
ROAD USER COSTS PER DAY	\$109,662
CONGESTED HOURS PER DAY*	5

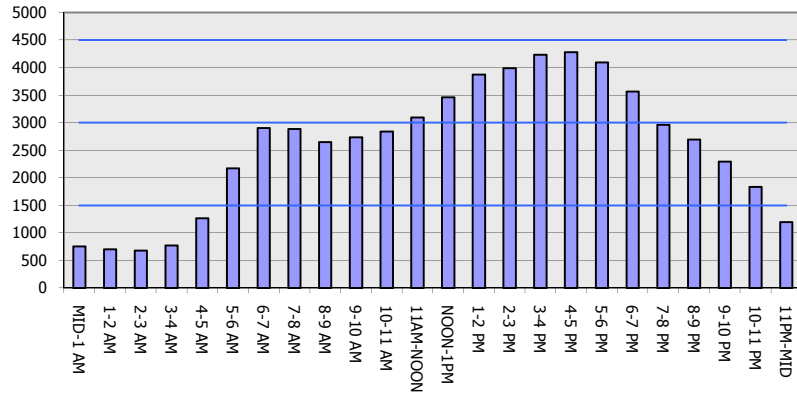
*Delays Exceeding User-Specified Maximum

**IH 94: MN 96 TO STH 35 N
NIGHTTIME 2 LANE CLOSURE
NO DIVERSION ROUTE (MAX QUEUE METHOD)**

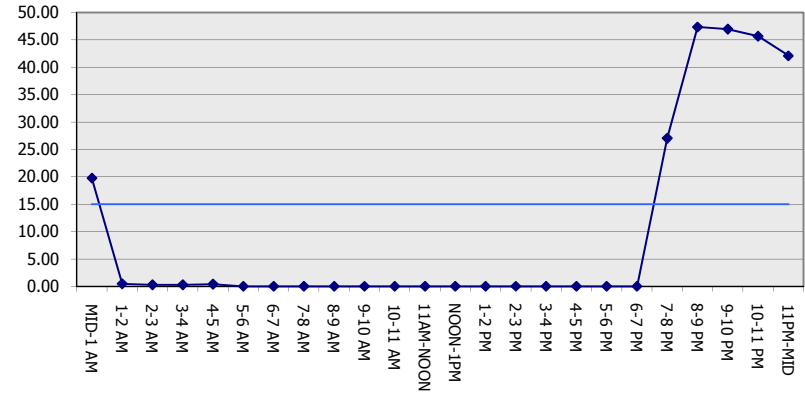
MAY
Analyzed for 2009
Construction Season

GRAPHICAL REPRESENTATION OF TRAFFIC MODEL INPUT AND OUTPUT
FRIDAY WESTBOUND DIRECTION

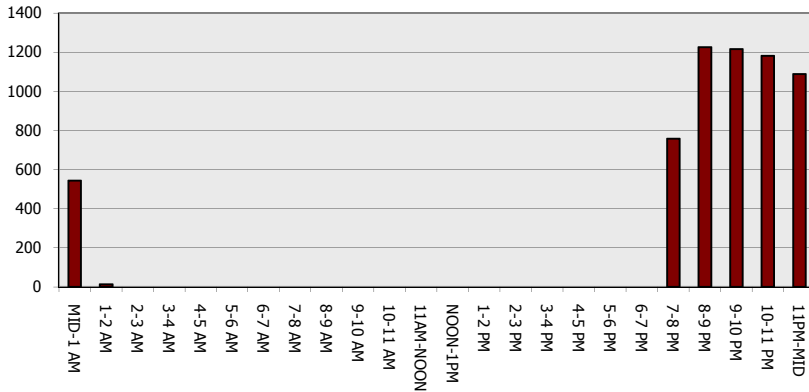
Main Route - Traffic Demand (Vehicles Per Hour)



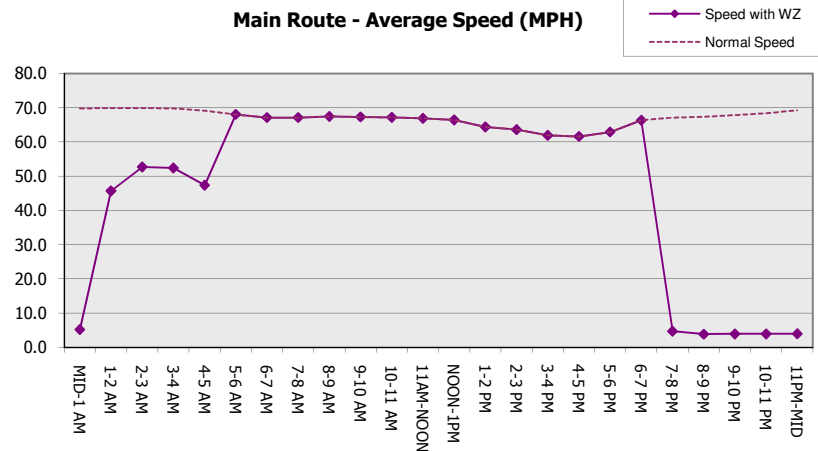
Main Route Average Delay Per Vehicle (Minutes)



Main Route - Average Queue Length (Vehicles)



Main Route - Average Speed (MPH)



IH 94: MN 96 TO STH 35 N NIGHTTIME 2 LANE CLOSURE NO DIVERSION ROUTE (MAX QUEUE METHOD)	MAY
	Analyzed for 2009 Construction Season

SUMMARY OF TRAFFIC MODEL OUTPUT

FRIDAY EASTBOUND DIRECTION

TIME OF DAY	FLOWS AND CAPACITY IN VEH/HR						AVERAGE SPEEDS IN MPH			
	MAIN ROUTE		SITE CAPA CITY	FLOW		AV.DEL PER VEH (MINS)	AVERAGE QUEUE (VEH)	MAIN ROUTE		SITE
	DEMAND FLOW	PCT HEAVY		MAIN ROUTE	'DIVER TED'			WITHOUT WORK ZONE	WITH WORK ZONE	
MID-1 AM	726	0.0	1499	726	0	15.54	460	69.8	6.0	36.1
1-2 AM	472	0.0	1500	472	0	0.30	1	70.2	52.2	43.6
2-3 AM	461	0.0	1500	461	0	0.27	0	70.2	53.4	43.7
3-4 AM	448	0.0	1500	448	0	0.27	0	70.2	53.5	43.7
4-5 AM	667	0.0	1500	667	0	0.28	0	69.9	52.8	42.8
5-6 AM	1034	0.0	OFF	1034	0	0.00	0	69.4	69.4	69.4
6-7 AM	1745	0.0	OFF	1745	0	0.00	0	68.6	68.6	68.6
7-8 AM	2615	0.0	OFF	2615	0	0.00	0	67.5	67.5	67.5
8-9 AM	2950	0.0	OFF	2950	0	0.00	0	67.1	67.1	67.1
9-10 AM	3681	0.0	OFF	3681	0	0.00	0	65.7	65.7	65.7
10-11 AM	4076	0.0	OFF	4076	0	0.00	0	63.0	63.0	63.0
11AM-NOON	4248	0.0	OFF	4248	0	0.00	0	61.9	61.9	61.9
NOON-1PM	4511	0.0	OFF	4511	0	0.00	0	60.1	60.1	60.1
1-2 PM	5189	0.0	OFF	5189	0	0.00	0	55.4	55.4	55.4
2-3 PM	5228	0.0	OFF	5228	0	0.00	0	55.1	55.1	55.1
3-4 PM	5748	0.0	OFF	5748	0	0.00	0	51.6	51.6	51.6
4-5 PM	5857	0.0	OFF	5857	0	0.00	0	50.9	50.9	50.9
5-6 PM	5624	0.0	OFF	5624	0	0.00	0	52.4	52.4	52.4
6-7 PM	5397	0.0	OFF	5397	0	0.00	0	54.0	54.0	54.0
7-8 PM	3753	0.0	1499	2696	1057	35.80+	952	65.2	4.3	30.8
8-9 PM	2515	0.0	1499	1486	1030	46.68+	1208	67.6	4.0	30.8
9-10 PM	1858	0.0	1499	1499	359	46.43+	1201	68.4	4.0	30.8
10-11 PM	1526	0.0	1499	1500	26	46.36+	1199	68.8	4.0	30.8
11PM-MID	1146	0.0	1499	1146	0	39.77+	1028	69.3	4.1	30.8

"OFF" INDICATES NO ROAD WORK (ALL LANES OPEN TO TRAFFIC)

+ INDICATES QUEUEING EXCEEDS USER-SPECIFIED MAXIMUM LIMIT

----- SITE BREAKDOWN DELAYS -----	
BREAKDOWN DURATION (MINS)	0
RANGE OF QUEUE DELAY - MIN (VEH-H) MAX	0.0
AV BREAKDOWNS PER DAY	0.00
AV QUEUE DELAY/DAY (VEH-H)	0.0
AV TOTAL DELAY/DAY (VEH-H)	0.0

----- SITE ACCIDENT DELAYS -----	
BREAKDOWN DURATION (MINS)	0
RANGE OF QUEUE DELAY - MIN (VEH-H) MAX	0
AV BREAKDOWNS PER DAY	0
AV QUEUE DELAY/DAY (VEH-H)	0
AV TOTAL DELAY/DAY (VEH-H)	0

AVERAGE ACCIDENT NUMBERS (PIA/DAY)	
MAIN ROUTE WITHOUT WORKS	0.0114
MAIN ROUTE WITH WORKS	0.0098
'DIVERSION'	0.0009

PIA: Personal Injury Accidents

ECONOMIC IMPACT ON ROAD USERS	
ROAD USER COSTS PER DAY	\$109,845
CONGESTED HOURS PER DAY*	5

*Delays Exceeding User-Specified Maximum

**IH 94: MN 96 TO STH 35 N
NIGHTTIME 2 LANE CLOSURE
NO DIVERSION ROUTE (MAX QUEUE METHOD)**

MAY
Analyzed for 2009
Construction Season

GRAPHICAL REPRESENTATION OF TRAFFIC MODEL INPUT AND OUTPUT
FRIDAY EASTBOUND DIRECTION

