

IH 94: MN 96 TO STH 35 N NIGHTTIME CLOSURE NO DIVERSION ROUTE (MAX QUEUE METHOD)	MAY
	Analyzed for 2009 Construction Season

SUMMARY OF TRAFFIC MODEL OUTPUT

FRIDAY WESTBOUND DIRECTION

TIME OF DAY	FLOWS AND CAPACITY IN VEH/HR						AVERAGE SPEEDS IN MPH			
	MAIN ROUTE		SITE CAPA CITY	FLOW		AV.DEL PER VEH (MINS)	AVERAGE QUEUE (VEH)	MAIN ROUTE		SITE
	DEMAND FLOW	PCT HEAVY		MAIN ROUTE	'DIVER TED'			WITHOUT WORK ZONE	WITH WORK ZONE	
MID-1 AM	752	0.0	3000	752	0	0.18	0	69.8	57.8	49.7
1-2 AM	701	0.0	3000	701	0	0.18	0	69.9	57.8	49.7
2-3 AM	681	0.0	3000	681	0	0.18	0	69.9	57.8	49.7
3-4 AM	773	0.0	3000	773	0	0.18	0	69.8	57.8	49.7
4-5 AM	1264	0.0	3000	1264	0	0.18	0	69.2	57.5	49.7
5-6 AM	2171	0.0	OFF	2171	0	0.00	0	68.1	68.1	68.1
6-7 AM	2902	0.0	OFF	2902	0	0.00	0	67.1	67.1	67.1
7-8 AM	2883	0.0	OFF	2883	0	0.00	0	67.1	67.1	67.1
8-9 AM	2645	0.0	OFF	2645	0	0.00	0	67.4	67.4	67.4
9-10 AM	2735	0.0	OFF	2735	0	0.00	0	67.3	67.3	67.3
10-11 AM	2838	0.0	OFF	2838	0	0.00	0	67.2	67.2	67.2
11AM-NOON	3095	0.0	OFF	3095	0	0.00	0	66.9	66.9	66.9
NOON-1PM	3463	0.0	OFF	3463	0	0.00	0	66.4	66.4	66.4
1-2 PM	3870	0.0	OFF	3870	0	0.00	0	64.4	64.4	64.4
2-3 PM	3990	0.0	OFF	3990	0	0.00	0	63.6	63.6	63.6
3-4 PM	4232	0.0	OFF	4232	0	0.00	0	61.9	61.9	61.9
4-5 PM	4278	0.0	OFF	4278	0	0.00	0	61.6	61.6	61.6
5-6 PM	4095	0.0	OFF	4095	0	0.00	0	62.9	62.9	62.9
6-7 PM	3567	0.0	OFF	3567	0	0.00	0	66.3	66.3	66.3
7-8 PM	2961	0.0	2999	2961	0	0.56	12	67.1	41.2	38.3
8-9 PM	2696	0.0	3000	2696	0	0.27	0	67.4	51.8	42.5
9-10 PM	2291	0.0	3000	2291	0	0.17	0	67.9	57.1	49.7
10-11 PM	1832	0.0	3000	1832	0	0.17	0	68.4	57.3	49.7
11PM-MID	1195	0.0	3000	1195	0	0.18	0	69.2	57.6	49.7

"OFF" INDICATES NO ROAD WORK (ALL LANES OPEN TO TRAFFIC)

----- SITE BREAKDOWN DELAYS -----	
BREAKDOWN DURATION (MINS)	0
RANGE OF QUEUE DELAY - MIN (VEH-H) MAX	0.0
AV BREAKDOWNS PER DAY	0.00
AV QUEUE DELAY/DAY (VEH-H)	0.0
AV TOTAL DELAY/DAY (VEH-H)	0.0

----- SITE ACCIDENT DELAYS -----	
BREAKDOWN DURATION (MINS)	0
RANGE OF QUEUE DELAY - MIN (VEH-H) MAX	0
AV BREAKDOWNS PER DAY	0
AV QUEUE DELAY/DAY (VEH-H)	0
AV TOTAL DELAY/DAY (VEH-H)	0

AVERAGE ACCIDENT NUMBERS (PIA/DAY)	
MAIN ROUTE WITHOUT WORKS	0.0099
MAIN ROUTE WITH WORKS	0.0082
'DIVERSION'	0.0000
PIA: Personal Injury Accidents	
IMPACTS ON ROAD USERS	
ROAD USER COSTS PER DAY	\$1,000
CONGESTED HOURS PER DAY*	0

*Delays Exceeding User-Specified Maximum

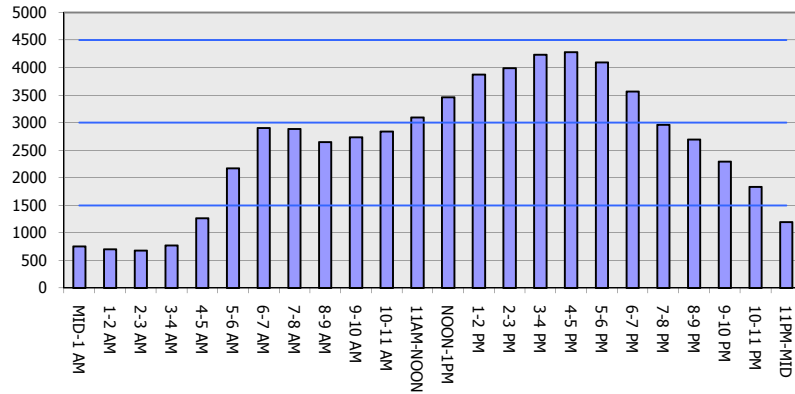
**IH 94: MN 96 TO STH 35 N
NIGHTTIME CLOSURE
NO DIVERSION ROUTE (MAX QUEUE METHOD)**

MAY
Analyzed for 2009
Construction Season

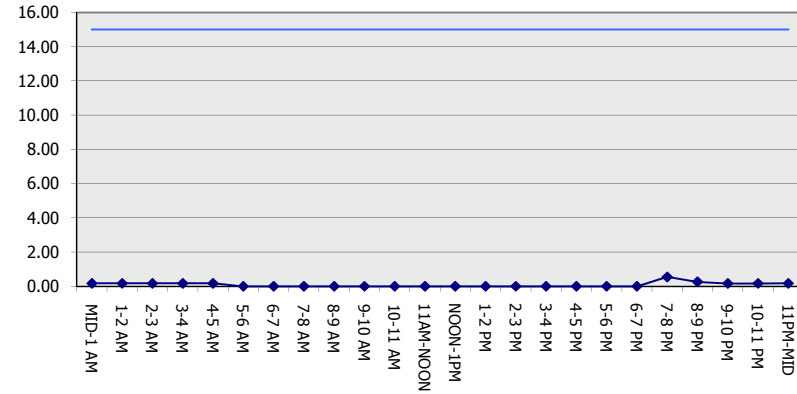
GRAPHICAL REPRESENTATION OF TRAFFIC MODEL INPUT AND OUTPUT

FRIDAY WESTBOUND DIRECTION

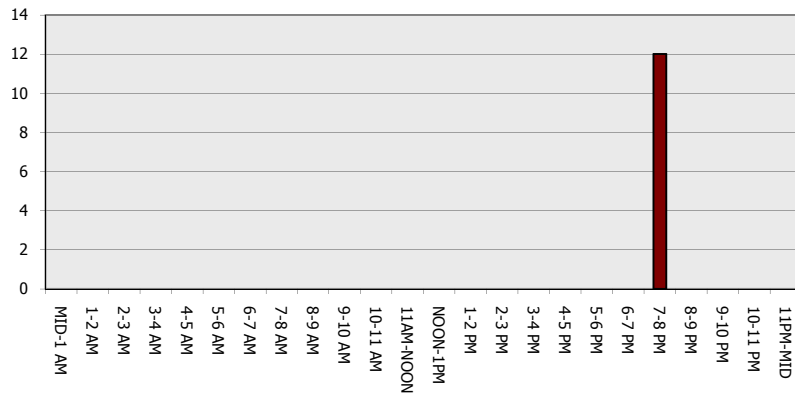
Main Route - Traffic Demand (Vehicles Per Hour)



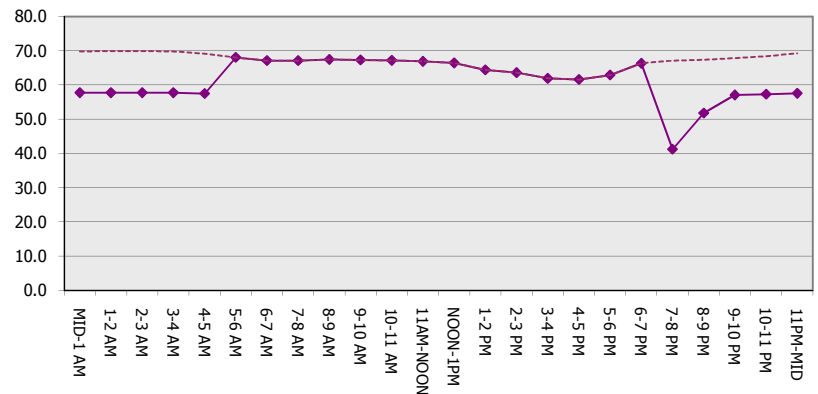
Main Route Average Delay Per Vehicle (Minutes)



Main Route - Average Queue Length (Vehicles)



Main Route - Average Speed (MPH)



IH 94: MN 96 TO STH 35 N NIGHTTIME CLOSURE NO DIVERSION ROUTE (MAX QUEUE METHOD)	MAY
	Analyzed for 2009 Construction Season

SUMMARY OF TRAFFIC MODEL OUTPUT

FRIDAY EASTBOUND DIRECTION

TIME OF DAY	FLOWS AND CAPACITY IN VEH/HR						AVERAGE SPEEDS IN MPH			
	MAIN ROUTE		SITE CAPA CITY	FLOW		AV.DEL PER VEH (MINS)	AVERAGE QUEUE (VEH)	MAIN ROUTE		SITE
	DEMAND FLOW	PCT HEAVY		MAIN ROUTE	'DIVER TED'			WITHOUT WORK ZONE	WITH WORK ZONE	
MID-1 AM	726	0.0	3000	726	0	0.18	0	69.8	57.8	49.7
1-2 AM	472	0.0	3000	472	0	0.18	0	70.2	57.9	49.7
2-3 AM	461	0.0	3000	461	0	0.18	0	70.2	57.9	49.7
3-4 AM	448	0.0	3000	448	0	0.18	0	70.2	57.9	49.7
4-5 AM	667	0.0	3000	667	0	0.18	0	69.9	57.8	49.7
5-6 AM	1034	0.0	OFF	1034	0	0.00	0	69.4	69.4	69.4
6-7 AM	1745	0.0	OFF	1745	0	0.00	0	68.6	68.6	68.6
7-8 AM	2615	0.0	OFF	2615	0	0.00	0	67.5	67.5	67.5
8-9 AM	2950	0.0	OFF	2950	0	0.00	0	67.1	67.1	67.1
9-10 AM	3681	0.0	OFF	3681	0	0.00	0	65.7	65.7	65.7
10-11 AM	4076	0.0	OFF	4076	0	0.00	0	63.0	63.0	63.0
11AM-NOON	4248	0.0	OFF	4248	0	0.00	0	61.9	61.9	61.9
NOON-1PM	4511	0.0	OFF	4511	0	0.00	0	60.1	60.1	60.1
1-2 PM	5189	0.0	OFF	5189	0	0.00	0	55.4	55.4	55.4
2-3 PM	5228	0.0	OFF	5228	0	0.00	0	55.1	55.1	55.1
3-4 PM	5748	0.0	OFF	5748	0	0.00	0	51.6	51.6	51.6
4-5 PM	5857	0.0	OFF	5857	0	0.00	0	50.9	50.9	50.9
5-6 PM	5624	0.0	OFF	5624	0	0.00	0	52.4	52.4	52.4
6-7 PM	5397	0.0	OFF	5397	0	0.00	0	54.0	54.0	54.0
7-8 PM	3753	0.0	2999	3753	0	8.23	466	65.2	10.6	37.3
8-9 PM	2515	0.0	2999	2515	0	10.44	569	67.6	9.6	38.8
9-10 PM	1858	0.0	3000	1858	0	0.40	35	68.4	47.4	49.7
10-11 PM	1526	0.0	3000	1526	0	0.17	0	68.8	57.4	49.7
11PM-MID	1146	0.0	3000	1146	0	0.18	0	69.3	57.6	49.7

"OFF" INDICATES NO ROAD WORK (ALL LANES OPEN TO TRAFFIC)

----- SITE BREAKDOWN DELAYS -----	
BREAKDOWN DURATION (MINS)	0
RANGE OF QUEUE DELAY - MIN (VEH-H) MAX	0.0
AV BREAKDOWNS PER DAY	0.00
AV QUEUE DELAY/DAY (VEH-H)	0.0
AV TOTAL DELAY/DAY (VEH-H)	0.0

----- SITE ACCIDENT DELAYS -----	
BREAKDOWN DURATION (MINS)	0
RANGE OF QUEUE DELAY - MIN (VEH-H) MAX	0
AV BREAKDOWNS PER DAY	0
AV QUEUE DELAY/DAY (VEH-H)	0
AV TOTAL DELAY/DAY (VEH-H)	0

AVERAGE ACCIDENT NUMBERS (PIA/DAY)	
MAIN ROUTE WITHOUT WORKS	0.0114
MAIN ROUTE WITH WORKS	0.0099
'DIVERSION'	0.0000

PIA: Personal Injury Accidents

ECONOMIC IMPACT ON ROAD USERS	
ROAD USER COSTS PER DAY	\$14,521
CONGESTED HOURS PER DAY*	0

*Delays Exceeding User-Specified Maximum

**IH 94: MN 96 TO STH 35 N
NIGHTTIME CLOSURE
NO DIVERSION ROUTE (MAX QUEUE METHOD)**

MAY
Analyzed for 2009
Construction Season

GRAPHICAL REPRESENTATION OF TRAFFIC MODEL INPUT AND OUTPUT
FRIDAY EASTBOUND DIRECTION

