

IH 94: STH 35 N TO CARMICHAEL RD (ST CROIX COUNTY) OFF-PEAK DAY 2 LANE CLOSURE DIVERSION ROUTE: STH 35 - COULEE RD - CARMICHAEL RD	MAY
	Analyzed for 2009 Construction Season

SUMMARY OF TRAFFIC MODEL OUTPUT

SUNDAY WESTBOUND DIRECTION

TIME OF DAY	FLOWS AND CAPACITY IN VEH/HR										AVERAGE SPEEDS IN MPH				
	MAIN ROUTE		ALTERNATE ROUTE		SITE CAPA CITY	FLOW MAIN ROUTE	FLOW DIVER -TING	TOTAL DIVN FLOW	AV.DEL PER VEH (MINS)	AVERAGE QUEUE (VEH)	MAIN ROUTE		ALTERNATE ROUTE		
	DEMAND FLOW	PCT HEAVY	NORMAL FLOW	PCT HEAVY							WITHOUT WORK ZN	WITH WORK ZN	SITE	WITHOUT WORK ZN	WITH WORK ZN
MID-1 AM	373	0.0	44	0.0	OFF	373	0	44	0.00	0	70.2	70.2	70.2	19.5	19.5
1-2 AM	309	0.0	37	0.0	OFF	309	0	37	0.00	0	70.2	70.2	70.2	19.6	19.6
2-3 AM	223	0.0	26	0.0	OFF	223	0	26	0.00	0	70.2	70.2	70.2	19.7	19.7
3-4 AM	224	0.0	26	0.0	OFF	224	0	26	0.00	0	70.2	70.2	70.2	19.7	19.7
4-5 AM	247	0.0	29	0.0	OFF	247	0	29	0.00	0	70.2	70.2	70.2	19.6	19.6
5-6 AM	325	0.0	39	0.0	OFF	325	0	39	0.00	0	70.2	70.2	70.2	19.6	19.6
6-7 AM	464	0.0	54	0.0	OFF	464	0	54	0.00	0	70.2	70.2	70.2	19.4	19.4
7-8 AM	719	0.0	85	0.0	OFF	719	0	85	0.00	0	69.9	69.9	69.9	19.2	19.2
8-9 AM	1115	0.0	131	0.0	OFF	1115	0	131	0.00	0	69.4	69.4	69.4	18.8	18.8
9-10 AM	1562	0.0	184	0.0	1499	1562	0	184	1.68	23	68.8	31.1	31.4	18.4	18.4
10-11 AM	2110	0.0	248	0.0	1500	1711	399	647	9.82	238	68.1	9.5	30.8	17.9	15.5
11A-NOON	2614	0.0	308	0.0	1500	1656	957	1265	15.86	389	67.5	7.1	30.8	17.5	11.2
NOON-1PM	2826	0.0	333	0.0	1499	1536	1289	1622+	19.80	490	67.2	6.4	30.8	17.3	9.7
1-2 PM	3134	0.0	369	0.0	1499	1504	1630	1999+	20.26	503	66.8	6.3	30.8	17.0	9.5
2-3 PM	3598	0.0	424	0.0	1500	1500	2098	2521+	20.31	505	66.3	6.3	30.8	16.5	9.5
3-4 PM	3979	0.0	469	0.0	1500	1500	2479	2947+	20.22	505	63.7	6.3	30.8	16.2	9.5
4-5 PM	4085	0.0	481	0.0	1500	1500	2585	3066+	20.20	505	63.0	6.3	30.8	16.1	9.5
5-6 PM	4004	0.0	472	0.0	1500	1500	2504	2976+	20.22	505	63.5	6.3	30.8	16.1	9.5
6-7 PM	3631	0.0	428	0.0	1500	1500	2131	2559+	20.30	505	66.1	6.3	30.8	16.5	9.5
7-8 PM	3166	0.0	372	0.0	OFF	3166	0	372	0.46	44	66.8	50.5	50.5	17.0	17.0
8-9 PM	2756	0.0	324	0.0	OFF	2756	0	324	0.00	0	67.3	67.3	67.3	17.3	17.3
9-10 PM	2128	0.0	250	0.0	OFF	2128	0	250	0.00	0	68.1	68.1	68.1	17.9	17.9
10-11 PM	1584	0.0	186	0.0	OFF	1584	0	186	0.00	0	68.7	68.7	68.7	18.4	18.4
11PM-MID	904	0.0	107	0.0	OFF	904	0	107	0.00	0	69.6	69.6	69.6	19.0	19.0

"OFF" INDICATES NO ROAD WORK (ALL LANES OPEN TO TRAFFIC)

+ INDICATES DIVERSION FLOW EXCEEDS USER-SPECIFIED WARNING LIMIT

----- SITE BREAKDOWN DELAYS -----	
BREAKDOWN DURATION (MINS)	0
RANGE OF QUEUE DELAY - MIN (VEH-H) MAX	0.0
RANGE OF DIVN DELAY - MIN (VEH-H) MAX	0.0
AV BREAKDOWNS PER DAY	0.00
AV QUEUE DELAY/DAY (VEH-H)	0.0
AV DIVN DELAY/DAY (VEH-H)	0.0
AV TOTAL DELAY/DAY (VEH-H)	0.0

----- SITE ACCIDENT DELAYS -----	
ACCIDENT DURATION (MINS)	0
RANGE OF QUEUE DELAY - MIN (VEH-H) MAX	0.0
RANGE OF DIVN DELAY - MIN (VEH-H) MAX	0.0
AV ACCIDENTS PER DAY	0.00
AV QUEUE DELAY/DAY (VEH-H)	0.0
AV DIVN DELAY/DAY (VEH-H)	0.0
AV TOTAL DELAY/DAY (VEH-H)	0.0

AVERAGE ACCIDENT NUMBERS (PIA/DAY)	
MAIN ROUTE WITHOUT WORKS	0.0117
MAIN ROUTE WITH WORKS	0.0066
DIVERSION	0.0701

PIA: Personal Injury Accidents

IMPACTS ON ROAD USERS	
ROAD USER COSTS PER DAY (DOLLARS)	\$175,665
CONGESTED HOURS PER DAY*	8

*Delays Exceeding 15 Minutes

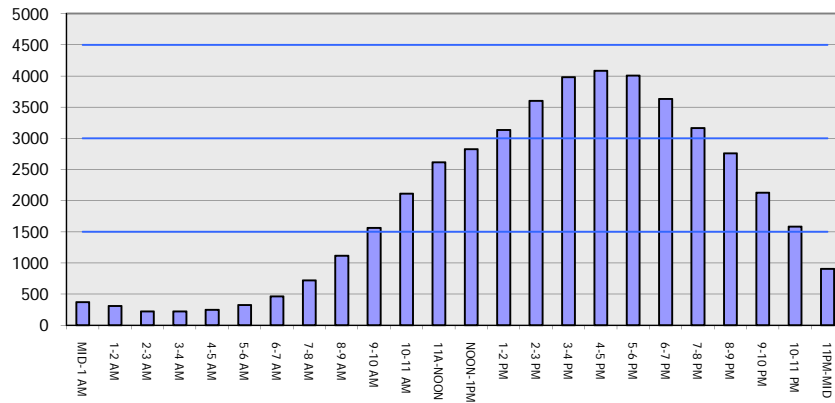
IH 94: STH 35 N TO CARMICHAEL RD (ST CROIX COUNTY)
OFF-PEAK DAY 2 LANE CLOSURE
DIVERSION ROUTE: STH 35 - COULEE RD - CARMICHAEL RD

MAY
 Analyzed for 2009
 Construction Season

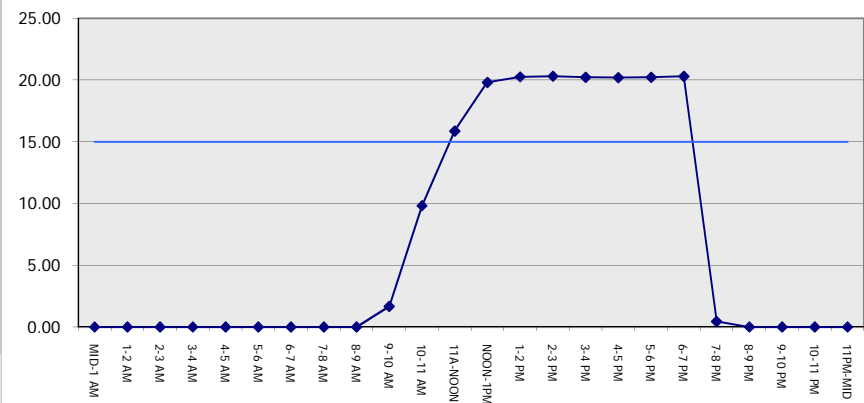
GRAPHICAL REPRESENTATION OF TRAFFIC MODEL INPUT AND OUTPUT

SUNDAY WESTBOUND DIRECTION

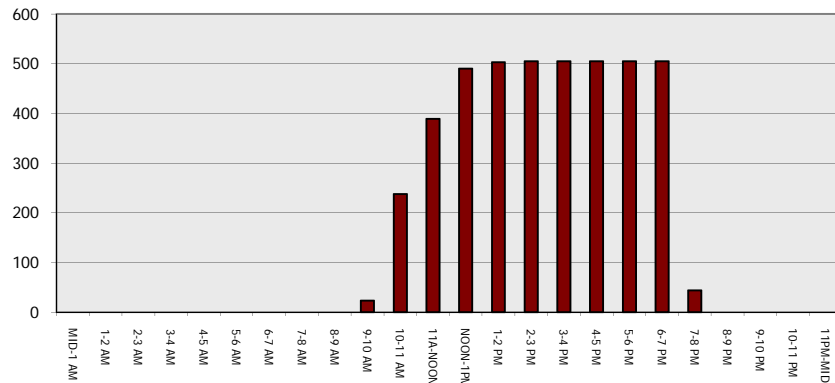
Main Route - Traffic Demand (Vehicles Per Hour)



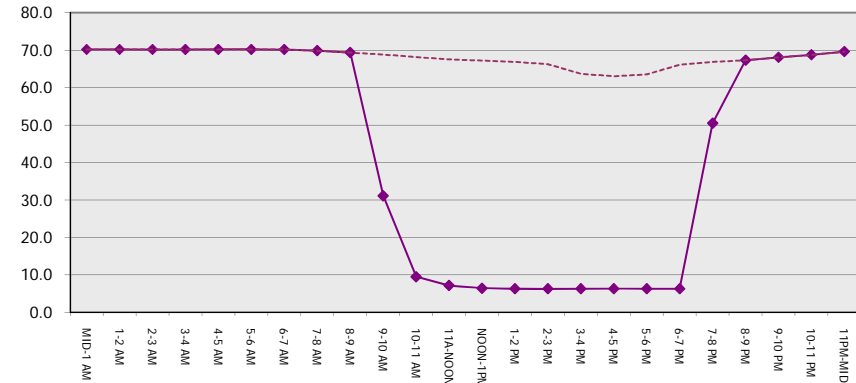
Main Route Average Delay Per Vehicle (Minutes)



Main Route - Average Queue Length (Vehicles)



Main Route - Average Speed (MPH)



IH 94: STH 35 N TO CARMICHAEL RD (ST CROIX COUNTY) OFF-PEAK DAY 2 LANE CLOSURE DIVERSION ROUTE: STH 35 - COULEE RD - CARMICHAEL RD	MAY
	Analyzed for 2009 Construction Season

SUMMARY OF TRAFFIC MODEL OUTPUT	
SUNDAY	EASTBOUND DIRECTION

TIME OF DAY	FLOWS AND CAPACITY IN VEH/HR							AVERAGE SPEEDS IN MPH							
	MAIN		DIVERSION		SITE CAPA CITY	FLOW MAIN ROUTE	FLOW DIVER -TING	TOTAL DIVN FLOW	AV.DEL PER VEH (MINS)	AVERAGE QUEUE (VEH)	MAIN ROUTE		ALTERNATE ROUTE		
	DEMAND FLOW	PCT HEAVY	NORMAL FLOW	PCT HEAVY							WITHOUT WORK ZN	WITH WORK ZN	SITE	WITHOUT WORK ZN	WITH WORK ZN
MID-1 AM	364	0.0	43	0.0	OFF	364	0	43	0.00	0	70.2	70.2	70.2	19.6	19.6
1-2 AM	236	0.0	28	0.0	OFF	236	0	28	0.00	0	70.2	70.2	70.2	19.6	19.6
2-3 AM	193	0.0	23	0.0	OFF	193	0	23	0.00	0	70.2	70.2	70.2	19.7	19.7
3-4 AM	176	0.0	21	0.0	OFF	176	0	21	0.00	0	70.2	70.2	70.2	19.7	19.7
4-5 AM	218	0.0	26	0.0	OFF	218	0	26	0.00	0	70.2	70.2	70.2	19.7	19.7
5-6 AM	336	0.0	40	0.0	OFF	336	0	40	0.00	0	70.2	70.2	70.2	19.6	19.6
6-7 AM	615	0.0	72	0.0	OFF	615	0	72	0.00	0	70.0	70.0	70.0	19.3	19.3
7-8 AM	980	0.0	115	0.0	OFF	980	0	115	0.00	0	69.5	69.5	69.5	18.9	18.9
8-9 AM	1469	0.0	173	0.0	OFF	1469	0	173	0.00	0	68.9	68.9	68.9	18.5	18.5
9-10 AM	2127	0.0	250	0.0	1499	1813	314	564	7.89	199	68.1	11.1	30.8	17.9	16.0
10-11 AM	2758	0.0	324	0.0	1500	1684	1074	1398	17.28	428	67.3	6.8	30.8	17.3	10.7
11A-NOON	2937	0.0	345	0.0	1499	1502	1435	1780+	20.11	499	67.1	6.3	30.8	17.1	9.6
NOON-1PM	3032	0.0	357	0.0	1500	1502	1529	1886+	20.20	501	66.9	6.3	30.8	17.1	9.6
1-2 PM	3053	0.0	360	0.0	1500	1501	1553	1913+	20.23	502	66.9	6.3	30.8	17.0	9.6
2-3 PM	2996	0.0	353	0.0	1500	1499	1497	1849+	20.17	500	67.0	6.3	30.8	17.1	9.6
3-4 PM	2944	0.0	346	0.0	1500	1499	1445	1792+	20.12	499	67.1	6.3	30.8	17.1	9.6
4-5 PM	2906	0.0	342	0.0	1499	1499	1407	1750+	20.08	498	67.1	6.3	30.8	17.2	9.6
5-6 PM	2634	0.0	310	0.0	1500	1446	1188	1498	19.39	480	67.4	6.5	30.8	17.5	9.8
6-7 PM	2238	0.0	264	0.0	1499	1345	893	1157	14.49	354	67.9	7.5	30.8	17.8	12.0
7-8 PM	1876	0.0	221	0.0	OFF	1876	0	221	0.11	10	68.4	63.5	63.5	18.1	18.1
8-9 PM	1448	0.0	171	0.0	OFF	1448	0	171	0.00	0	68.9	68.9	68.9	18.5	18.5
9-10 PM	1087	0.0	128	0.0	OFF	1087	0	128	0.00	0	69.4	69.4	69.4	18.9	18.9
10-11 PM	768	0.0	90	0.0	OFF	768	0	90	0.00	0	69.8	69.8	69.8	19.2	19.2
11PM-MID	621	0.0	73	0.0	OFF	621	0	73	0.00	0	70.0	70.0	70.0	19.3	19.3

"OFF" INDICATES NO ROAD WORK (ALL LANES OPEN TO TRAFFIC)

+ INDICATES DIVERSION FLOW EXCEEDS USER-SPECIFIED WARNING LIMIT

----- SITE BREAKDOWN DELAYS -----	
BREAKDOWN DURATION (MINS)	0
RANGE OF QUEUE DELAY - MIN	0.0
(VEH-H) MAX	0.0
RANGE OF DIVN DELAY - MIN	0.0
(VEH-H) MAX	0.0
AV BREAKDOWNS PER DAY	0.00
AV QUEUE DELAY/DAY (VEH-H)	0.0
AV DIVN DELAY/DAY (VEH-H)	0.0
AV TOTAL DELAY/DAY (VEH-H)	0.0

----- SITE ACCIDENT DELAYS -----	
ACCIDENT DURATION (MINS)	0
RANGE OF QUEUE DELAY - MIN	0.0
(VEH-H) MAX	0.0
RANGE OF DIVN DELAY - MIN	0.0
(VEH-H) MAX	0.0
AV ACCIDENTS PER DAY	0.00
AV QUEUE DELAY/DAY (VEH-H)	0.0
AV DIVN DELAY/DAY (VEH-H)	0.0
AV TOTAL DELAY/DAY (VEH-H)	0.0

AVERAGE ACCIDENT NUMBERS (PIA/DAY)	
MAIN ROUTE WITHOUT WORKS	0.0097
MAIN ROUTE WITH WORKS	0.0055
DIVERSION	0.0548

PIA: Personal Injury Accidents

IMPACTS ON ROAD USERS	
ROAD USER COSTS PER DAY (DOLLARS)	\$154,884
CONGESTED HOURS PER DAY*	8

*Delays Exceeding 15 Minutes

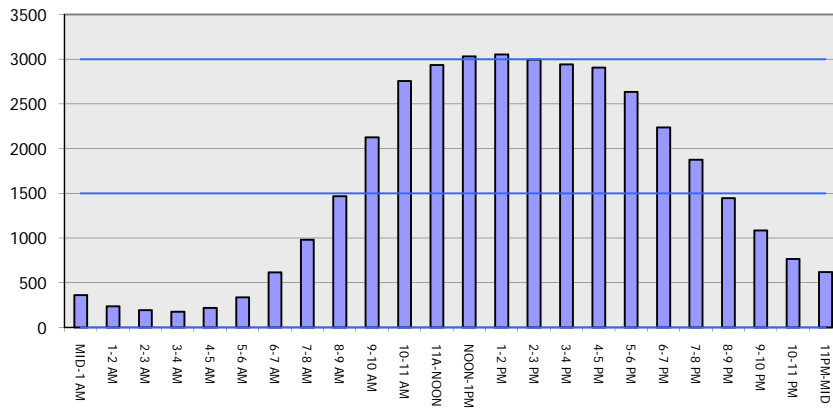
**IH 94: STH 35 N TO CARMICHAEL RD (ST CROIX COUNTY)
 OFF-PEAK DAY 2 LANE CLOSURE
 DIVERSION ROUTE: STH 35 - COULEE RD - CARMICHAEL RD**

MAY
 Analyzed for 2009
 Construction Season

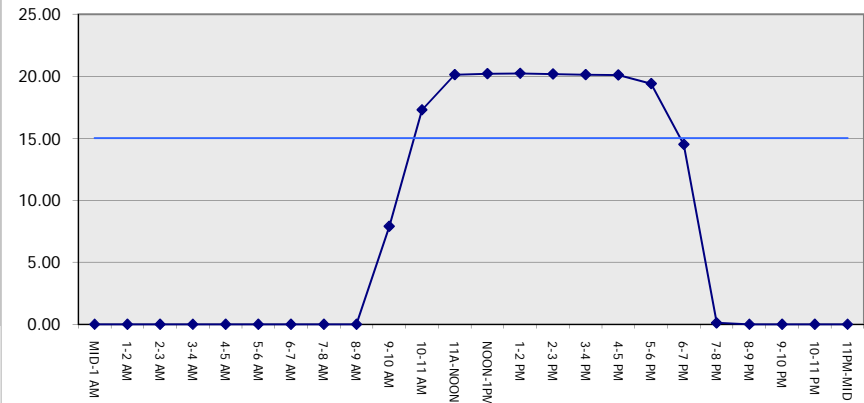
GRAPHICAL REPRESENTATION OF TRAFFIC MODEL INPUT AND OUTPUT

SUNDAY EASTBOUND DIRECTION

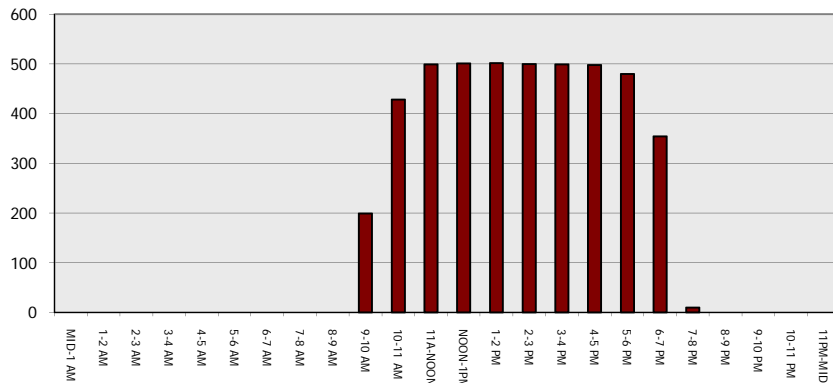
Main Route - Traffic Demand (Vehicles Per Hour)



Main Route Average Delay Per Vehicle (Minutes)



Main Route - Average Queue Length (Vehicles)



Main Route - Average Speed (MPH)

