

IH 94: STH 35 N TO CARMICHAEL RD (ST CROIX COUNTY) OFF-PEAK CLOSURE DIVERSION ROUTE: STH 35 - COULEE RD - CARMICHAEL RD	MAY
	Analyzed for 2009 Construction Season

SUMMARY OF TRAFFIC MODEL OUTPUT

SUNDAY WESTBOUND DIRECTION

TIME OF DAY	FLOWS AND CAPACITY IN VEH/HR								AVERAGE SPEEDS IN MPH						
	MAIN ROUTE		ALTERNATE ROUTE		SITE CAPA CITY	FLOW MAIN ROUTE	FLOW DIVER -TING	TOTAL DIVN FLOW	AV.DEL PER VEH (MINS)	AVERAGE QUEUE (VEH)	MAIN ROUTE		ALTERNATE ROUTE		
	DEMAND FLOW	PCT HEAVY	NORMAL FLOW	PCT HEAVY							WITHOUT WORK ZN	WITH WORK ZN	SITE	WITHOUT WORK ZN	WITH WORK ZN
MID-1 AM	373	0.0	44	0.0	OFF	373	0	44	0.00	0	70.2	70.2	70.2	19.5	19.5
1-2 AM	309	0.0	37	0.0	OFF	309	0	37	0.00	0	70.2	70.2	70.2	19.6	19.6
2-3 AM	223	0.0	26	0.0	OFF	223	0	26	0.00	0	70.2	70.2	70.2	19.7	19.7
3-4 AM	224	0.0	26	0.0	OFF	224	0	26	0.00	0	70.2	70.2	70.2	19.7	19.7
4-5 AM	247	0.0	29	0.0	OFF	247	0	29	0.00	0	70.2	70.2	70.2	19.6	19.6
5-6 AM	325	0.0	39	0.0	OFF	325	0	39	0.00	0	70.2	70.2	70.2	19.6	19.6
6-7 AM	464	0.0	54	0.0	OFF	464	0	54	0.00	0	70.2	70.2	70.2	19.4	19.4
7-8 AM	719	0.0	85	0.0	OFF	719	0	85	0.00	0	69.9	69.9	69.9	19.2	19.2
8-9 AM	1115	0.0	131	0.0	OFF	1115	0	131	0.00	0	69.4	69.4	69.4	18.8	18.8
9-10 AM	1562	0.0	184	0.0	3000	1562	0	184	0.34	0	68.8	55.2	49.7	18.4	18.4
10-11 AM	2110	0.0	248	0.0	3000	2110	0	248	0.33	0	68.1	55.1	49.7	17.9	17.9
11A-NOON	2614	0.0	308	0.0	3000	2614	0	308	0.48	0	67.5	50.5	44.2	17.5	17.5
NOON-1PM	2826	0.0	333	0.0	2999	2826	0	333	0.61	0	67.2	47.0	40.1	17.3	17.3
1-2 PM	3134	0.0	369	0.0	2999	3134	0	369	1.37	42	66.8	34.2	37.3	17.0	17.0
2-3 PM	3598	0.0	424	0.0	3000	3497	101	525	7.29	387	66.3	13.8	37.3	16.5	17.5
3-4 PM	3979	0.0	469	0.0	2999	3285	693	1162	14.84	788	63.7	10.0	37.3	16.2	14.2
4-5 PM	4085	0.0	481	0.0	2999	3147	938	1419	18.65	998	63.0	9.3	37.3	16.1	12.6
5-6 PM	4004	0.0	472	0.0	2999	2989	1015	1487	20.01	1071	63.5	9.1	37.3	16.1	12.2
6-7 PM	3631	0.0	428	0.0	2999	2726	904	1332	17.34	919	66.1	9.5	37.3	16.5	13.1
7-8 PM	3166	0.0	372	0.0	OFF	3166	0	372	1.13	106	66.8	37.3	37.3	17.0	17.0
8-9 PM	2756	0.0	324	0.0	OFF	2756	0	324	0.00	0	67.3	67.3	67.3	17.3	17.3
9-10 PM	2128	0.0	250	0.0	OFF	2128	0	250	0.00	0	68.1	68.1	68.1	17.9	17.9
10-11 PM	1584	0.0	186	0.0	OFF	1584	0	186	0.00	0	68.7	68.7	68.7	18.4	18.4
11PM-MID	904	0.0	107	0.0	OFF	904	0	107	0.00	0	69.6	69.6	69.6	19.0	19.0

"OFF" INDICATES NO ROAD WORK (ALL LANES OPEN TO TRAFFIC)

----- SITE BREAKDOWN DELAYS -----	
BREAKDOWN DURATION (MINS)	0
RANGE OF QUEUE DELAY - MIN	0.0
(VEH-H) MAX	0.0
RANGE OF DIVN DELAY - MIN	0.0
(VEH-H) MAX	0.0
AV BREAKDOWNS PER DAY	0.00
AV QUEUE DELAY/DAY (VEH-H)	0.0
AV DIVN DELAY/DAY (VEH-H)	0.0
AV TOTAL DELAY/DAY (VEH-H)	0.0

----- SITE ACCIDENT DELAYS -----	
ACCIDENT DURATION (MINS)	0
RANGE OF QUEUE DELAY - MIN	0.0
(VEH-H) MAX	0.0
RANGE OF DIVN DELAY - MIN	0.0
(VEH-H) MAX	0.0
AV ACCIDENTS PER DAY	0.00
AV QUEUE DELAY/DAY (VEH-H)	0.0
AV DIVN DELAY/DAY (VEH-H)	0.0
AV TOTAL DELAY/DAY (VEH-H)	0.0

AVERAGE ACCIDENT NUMBERS (PIA/DAY)	
MAIN ROUTE WITHOUT WORKS	0.0117
MAIN ROUTE WITH WORKS	0.0089
DIVERSION	0.0296

PIA: Personal Injury Accidents

IMPACTS ON ROAD USERS	
ROAD USER COSTS PER DAY (DOLLARS)	\$91,099
CONGESTED HOURS PER DAY*	3

*Delays Exceeding 15 Minutes

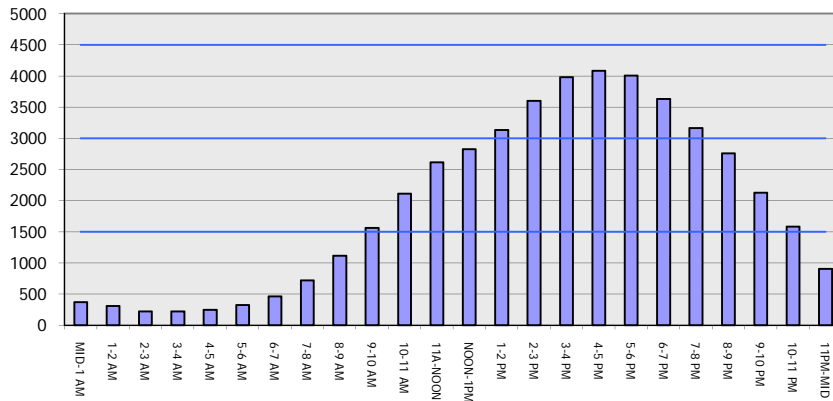
**IH 94: STH 35 N TO CARMICHAEL RD (ST CROIX COUNTY)
OFF-PEAK CLOSURE
DIVERSION ROUTE: STH 35 - COULEE RD - CARMICHAEL RD**

MAY
Analyzed for 2009
Construction Season

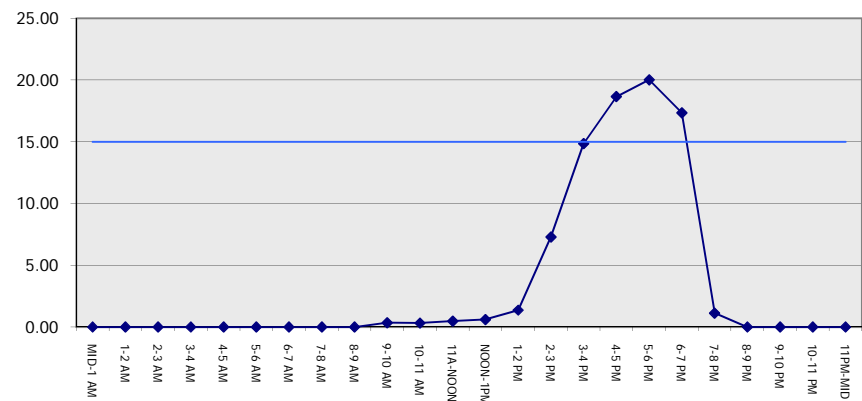
GRAPHICAL REPRESENTATION OF TRAFFIC MODEL INPUT AND OUTPUT

SUNDAY WESTBOUND DIRECTION

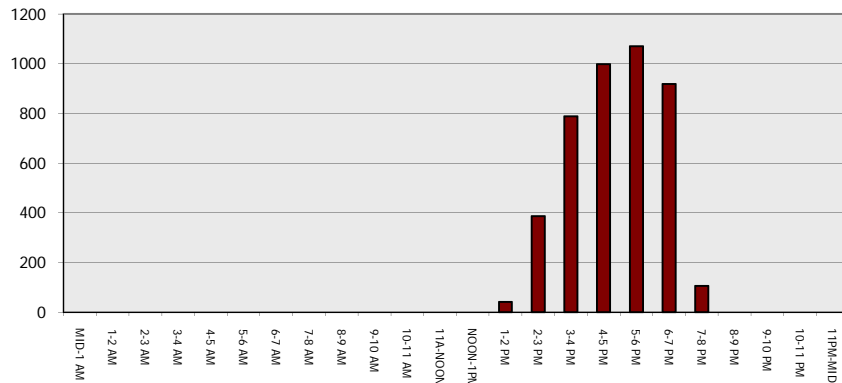
Main Route - Traffic Demand (Vehicles Per Hour)



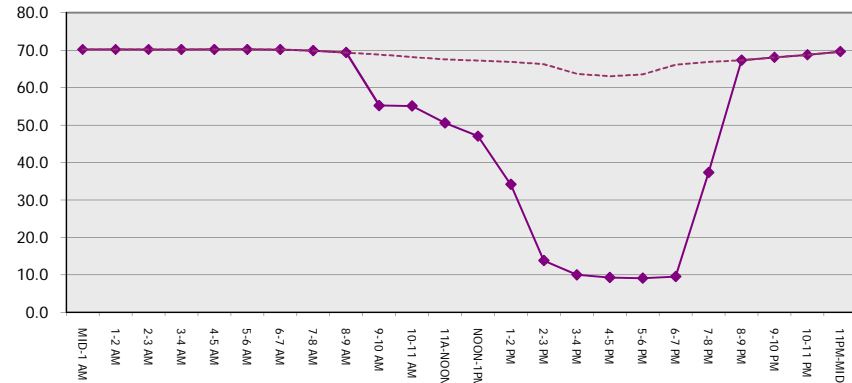
Main Route Average Delay Per Vehicle (Minutes)



Main Route - Average Queue Length (Vehicles)



Main Route - Average Speed (MPH)



IH 94: STH 35 N TO CARMICHAEL RD (ST CROIX COUNTY) OFF-PEAK CLOSURE DIVERSION ROUTE: STH 35 - COULEE RD - CARMICHAEL RD	MAY
	Analyzed for 2009 Construction Season

SUMMARY OF TRAFFIC MODEL OUTPUT

SUNDAY EASTBOUND DIRECTION

TIME OF DAY	FLOWS AND CAPACITY IN VEH/HR								AVERAGE SPEEDS IN MPH						
	MAIN		DIVERSION		SITE CAPA CITY	FLOW MAIN ROUTE	FLOW DIVER -TING	TOTAL DIVN FLOW	AV.DEL PER VEH (MINS)	AVERAGE QUEUE (VEH)	MAIN ROUTE		SITE	ALTERNATE ROUTE	
	DEMAND FLOW	PCT HEAVY	NORMAL FLOW	PCT HEAVY							WITHOUT WORK ZN	WITH WORK ZN		WITHOUT WORK ZN	WITH WORK ZN
MID-1 AM	364	0.0	43	0.0	OFF	364	0	43	0.00	0	70.2	70.2	70.2	19.6	19.6
1-2 AM	236	0.0	28	0.0	OFF	236	0	28	0.00	0	70.2	70.2	70.2	19.6	19.6
2-3 AM	193	0.0	23	0.0	OFF	193	0	23	0.00	0	70.2	70.2	70.2	19.7	19.7
3-4 AM	176	0.0	21	0.0	OFF	176	0	21	0.00	0	70.2	70.2	70.2	19.7	19.7
4-5 AM	218	0.0	26	0.0	OFF	218	0	26	0.00	0	70.2	70.2	70.2	19.7	19.7
5-6 AM	336	0.0	40	0.0	OFF	336	0	40	0.00	0	70.2	70.2	70.2	19.6	19.6
6-7 AM	615	0.0	72	0.0	OFF	615	0	72	0.00	0	70.0	70.0	70.0	19.3	19.3
7-8 AM	980	0.0	115	0.0	OFF	980	0	115	0.00	0	69.5	69.5	69.5	18.9	18.9
8-9 AM	1469	0.0	173	0.0	OFF	1469	0	173	0.00	0	68.9	68.9	68.9	18.5	18.5
9-10 AM	2127	0.0	250	0.0	3000	2127	0	250	0.33	0	68.1	55.1	49.7	17.9	17.9
10-11 AM	2758	0.0	324	0.0	3000	2758	0	324	0.57	0	67.3	48.1	41.4	17.3	17.3
11A-NOON	2937	0.0	345	0.0	2999	2937	0	345	0.69	0	67.1	45.3	38.3	17.1	17.1
NOON-1PM	3032	0.0	357	0.0	2999	3032	0	357	0.94	12	66.9	40.4	37.3	17.1	17.1
1-2 PM	3053	0.0	360	0.0	3000	3053	0	360	1.79	59	66.9	29.7	37.3	17.0	17.0
2-3 PM	2996	0.0	353	0.0	2999	2996	0	353	2.29	86	67.0	25.7	37.3	17.1	17.1
3-4 PM	2944	0.0	346	0.0	2999	2944	0	346	1.71	55	67.1	30.5	37.3	17.1	17.1
4-5 PM	2906	0.0	342	0.0	3000	2906	0	342	0.77	5	67.1	43.7	38.6	17.2	17.2
5-6 PM	2634	0.0	310	0.0	3000	2634	0	310	0.49	0	67.4	50.2	43.8	17.5	17.5
6-7 PM	2238	0.0	264	0.0	3000	2238	0	264	0.33	0	67.9	55.0	49.7	17.8	17.8
7-8 PM	1876	0.0	221	0.0	OFF	1876	0	221	0.00	0	68.4	68.4	68.4	18.1	18.1
8-9 PM	1448	0.0	171	0.0	OFF	1448	0	171	0.00	0	68.9	68.9	68.9	18.5	18.5
9-10 PM	1087	0.0	128	0.0	OFF	1087	0	128	0.00	0	69.4	69.4	69.4	18.9	18.9
10-11 PM	768	0.0	90	0.0	OFF	768	0	90	0.00	0	69.8	69.8	69.8	19.2	19.2
11PM-MID	621	0.0	73	0.0	OFF	621	0	73	0.00	0	70.0	70.0	70.0	19.3	19.3

"OFF" INDICATES NO ROAD WORK (ALL LANES OPEN TO TRAFFIC)

----- SITE BREAKDOWN DELAYS -----	
BREAKDOWN DURATION (MINS)	0
RANGE OF QUEUE DELAY - MIN	0.0
(VEH-H) MAX	0.0
RANGE OF DIVN DELAY - MIN	0.0
(VEH-H) MAX	0.0
AV BREAKDOWNS PER DAY	0.00
AV QUEUE DELAY/DAY (VEH-H)	0.0
AV DIVN DELAY/DAY (VEH-H)	0.0
AV TOTAL DELAY/DAY (VEH-H)	0.0

----- SITE ACCIDENT DELAYS -----	
ACCIDENT DURATION (MINS)	0
RANGE OF QUEUE DELAY - MIN	0.0
(VEH-H) MAX	0.0
RANGE OF DIVN DELAY - MIN	0.0
(VEH-H) MAX	0.0
AV ACCIDENTS PER DAY	0.00
AV QUEUE DELAY/DAY (VEH-H)	0.0
AV DIVN DELAY/DAY (VEH-H)	0.0
AV TOTAL DELAY/DAY (VEH-H)	0.0

AVERAGE ACCIDENT NUMBERS (PIA/DAY)	
MAIN ROUTE WITHOUT WORKS	0.0097
MAIN ROUTE WITH WORKS	0.0078
DIVERSION	0.0146

PIA: Personal Injury Accidents

IMPACTS ON ROAD USERS	
ROAD USER COSTS PER DAY (DOLLARS)	\$8,280
CONGESTED HOURS PER DAY*	0

*Delays Exceeding 15 Minutes

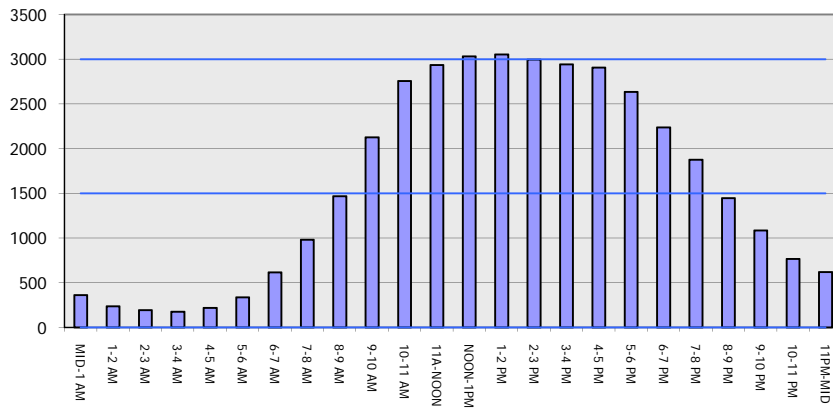
**IH 94: STH 35 N TO CARMICHAEL RD (ST CROIX COUNTY)
 OFF-PEAK CLOSURE
 DIVERSION ROUTE: STH 35 - COULEE RD - CARMICHAEL RD**

MAY
 Analyzed for 2009
 Construction Season

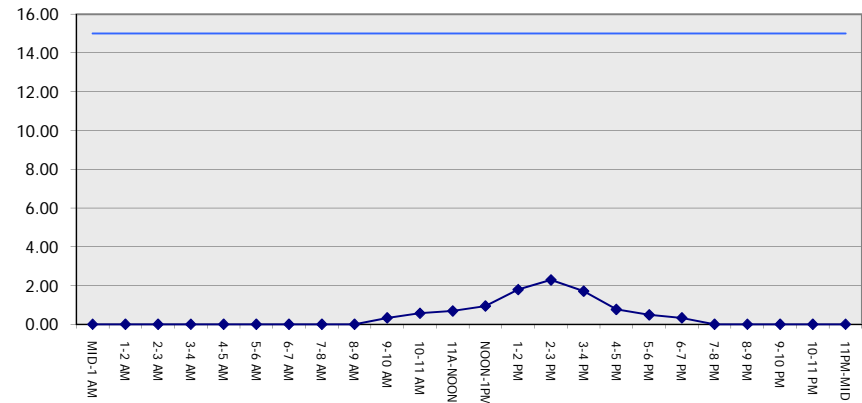
GRAPHICAL REPRESENTATION OF TRAFFIC MODEL INPUT AND OUTPUT

SUNDAY EASTBOUND DIRECTION

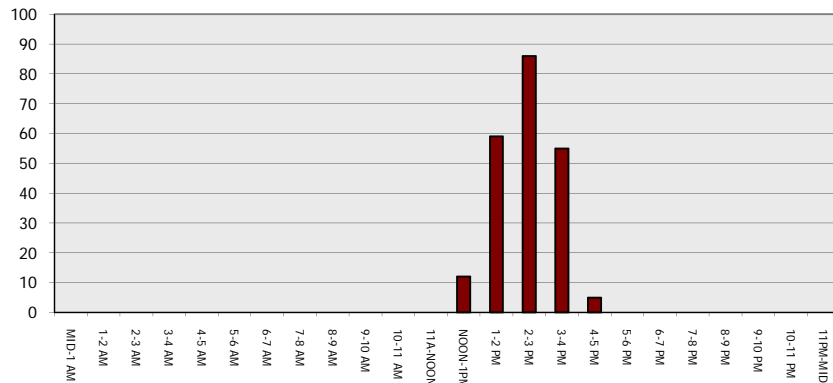
Main Route - Traffic Demand (Vehicles Per Hour)



Main Route Average Delay Per Vehicle (Minutes)



Main Route - Average Queue Length (Vehicles)



Main Route - Average Speed (MPH)

