

<b>IH 94: STH 35 N TO CARMICHAEL RD (ST CROIX COUNTY)</b> <b>OFF-PEAK DAY 2 LANE CLOSURE</b> <b>DIVERSION ROUTE: STH 35 - COULEE RD - CARMICHAEL RD</b>	<b>MAY</b>
	Analyzed for 2009 Construction Season

**SUMMARY OF TRAFFIC MODEL OUTPUT**

**SATURDAY WESTBOUND DIRECTION**

TIME OF DAY	FLOWS AND CAPACITY IN VEH/HR								AVERAGE SPEEDS IN MPH						
	MAIN ROUTE		ALTERNATE ROUTE		SITE CAPA CITY	FLOW MAIN ROUTE	FLOW DIVER -TING	TOTAL DIVN FLOW	AV.DEL PER VEH (MINS)	AVERAGE QUEUE (VEH)	MAIN ROUTE		ALTERNATE ROUTE		
	DEMAND FLOW	PCT HEAVY	NORMAL FLOW	PCT HEAVY							WITHOUT WORK ZN	WITH WORK ZN	SITE	WITHOUT WORK ZN	WITH WORK ZN
MID-1 AM	602	0.0	71	0.0	OFF	602	0	71	0.00	0	70.0	70.0	70.0	19.3	19.3
1-2 AM	483	0.0	56	0.0	OFF	483	0	56	0.00	0	70.1	70.1	70.1	19.4	19.4
2-3 AM	429	0.0	50	0.0	OFF	429	0	50	0.00	0	70.2	70.2	70.2	19.5	19.5
3-4 AM	399	0.0	47	0.0	OFF	399	0	47	0.00	0	70.2	70.2	70.2	19.5	19.5
4-5 AM	489	0.0	58	0.0	OFF	489	0	58	0.00	0	70.1	70.1	70.1	19.4	19.4
5-6 AM	617	0.0	72	0.0	OFF	617	0	72	0.00	0	70.0	70.0	70.0	19.3	19.3
6-7 AM	855	0.0	100	0.0	OFF	855	0	100	0.00	0	69.7	69.7	69.7	19.1	19.1
7-8 AM	1293	0.0	152	0.0	OFF	1293	0	152	0.00	0	69.1	69.1	69.1	18.7	18.7
8-9 AM	1793	0.0	211	0.0	1499	1766	27	238	4.24	108	68.5	17.3	30.8	18.2	18.1
9-10 AM	2324	0.0	274	0.0	1499	1594	731	1005	12.84	309	67.9	8.0	30.8	17.7	13.0
10-11 AM	2753	0.0	324	0.0	1500	1633	1120	1444	18.09	447	67.3	6.7	30.8	17.3	10.3
11A-NOON	2816	0.0	332	0.0	1500	1503	1313	1645+	19.99	495	67.3	6.3	30.8	17.3	9.6
NOON-1PM	2802	0.0	330	0.0	1500	1500	1302	1632+	19.98	495	67.3	6.3	30.8	17.3	9.6
1-2 PM	2765	0.0	325	0.0	1500	1499	1266	1591	19.94	494	67.3	6.3	30.8	17.3	9.6
2-3 PM	2643	0.0	311	0.0	1499	1473	1170	1481	19.46	481	67.4	6.5	30.8	17.5	9.8
3-4 PM	2635	0.0	311	0.0	1500	1494	1141	1452	18.87	466	67.4	6.5	30.8	17.5	10.0
4-5 PM	2568	0.0	302	0.0	1500	1458	1110	1413	18.13	447	67.6	6.6	30.8	17.5	10.2
5-6 PM	2241	0.0	264	0.0	1499	1372	869	1132	14.19	345	67.9	7.6	30.8	17.8	12.2
6-7 PM	1932	0.0	227	0.0	OFF	1932	0	227	0.11	10	68.3	63.3	63.3	18.1	18.1
7-8 PM	1655	0.0	195	0.0	OFF	1655	0	195	0.00	0	68.7	68.7	68.7	18.3	18.3
8-9 PM	1531	0.0	180	0.0	OFF	1531	0	180	0.00	0	68.8	68.8	68.8	18.4	18.4
9-10 PM	1270	0.0	150	0.0	OFF	1270	0	150	0.00	0	69.2	69.2	69.2	18.7	18.7
10-11 PM	960	0.0	113	0.0	OFF	960	0	113	0.00	0	69.6	69.6	69.6	19.0	19.0
11PM-MID	579	0.0	68	0.0	OFF	579	0	68	0.00	0	70.0	70.0	70.0	19.3	19.3

"OFF" INDICATES NO ROAD WORK (ALL LANES OPEN TO TRAFFIC)

+ INDICATES DIVERSION FLOW EXCEEDS USER-SPECIFIED WARNING LIMIT

*----- SITE BREAKDOWN DELAYS -----*	
BREAKDOWN DURATION (MINS)	0
RANGE OF QUEUE DELAY - MIN	0.0
(VEH-H) MAX	0.0
RANGE OF DIVN DELAY - MIN	0.0
(VEH-H) MAX	0.0
AV BREAKDOWNS PER DAY	0.00
AV QUEUE DELAY/DAY (VEH-H)	0.0
AV DIVN DELAY/DAY (VEH-H)	0.0
AV TOTAL DELAY/DAY (VEH-H)	0.0

*----- SITE ACCIDENT DELAYS -----*	
ACCIDENT DURATION (MINS)	0
RANGE OF QUEUE DELAY - MIN	0.0
(VEH-H) MAX	0.0
RANGE OF DIVN DELAY - MIN	0.0
(VEH-H) MAX	0.0
AV ACCIDENTS PER DAY	0.00
AV QUEUE DELAY/DAY (VEH-H)	0.0
AV DIVN DELAY/DAY (VEH-H)	0.0
AV TOTAL DELAY/DAY (VEH-H)	0.0

AVERAGE ACCIDENT NUMBERS (PIA/DAY)	
MAIN ROUTE WITHOUT WORKS	0.0098
MAIN ROUTE WITH WORKS	0.0062
DIVERSION	0.0475

PIA: Personal Injury Accidents

IMPACTS ON ROAD USERS	
ROAD USER COSTS PER DAY ( DOLLARS)	\$131,754
CONGESTED HOURS PER DAY*	7

\*Delays Exceeding 15 Minutes

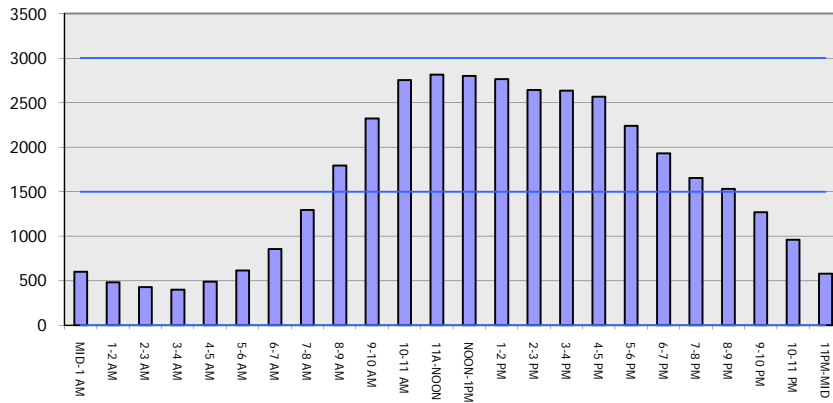
**IH 94: STH 35 N TO CARMICHAEL RD (ST CROIX COUNTY)**  
**OFF-PEAK DAY 2 LANE CLOSURE**  
**DIVERSION ROUTE: STH 35 - COULEE RD - CARMICHAEL RD**

**MAY**  
 Analyzed for 2009  
 Construction Season

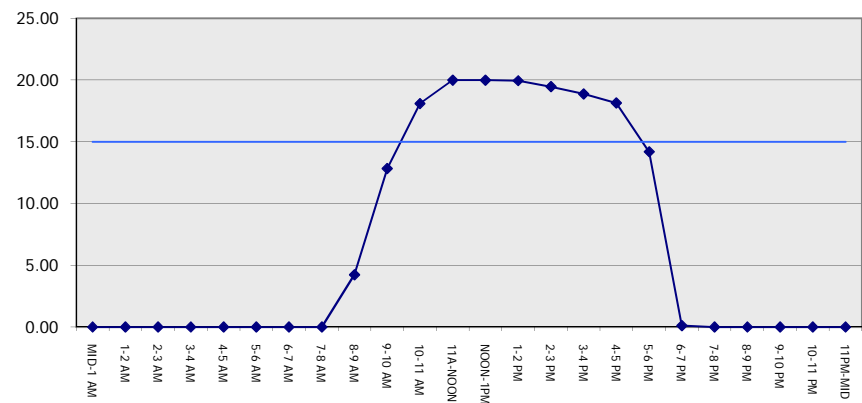
**GRAPHICAL REPRESENTATION OF TRAFFIC MODEL INPUT AND OUTPUT**

**SATURDAY WESTBOUND DIRECTION**

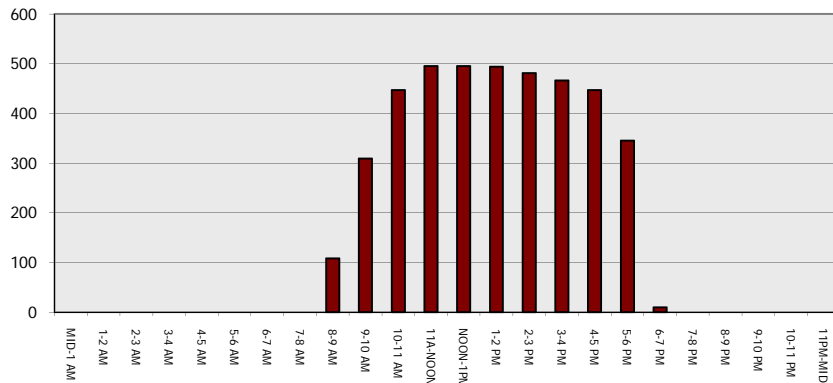
**Main Route - Traffic Demand (Vehicles Per Hour)**



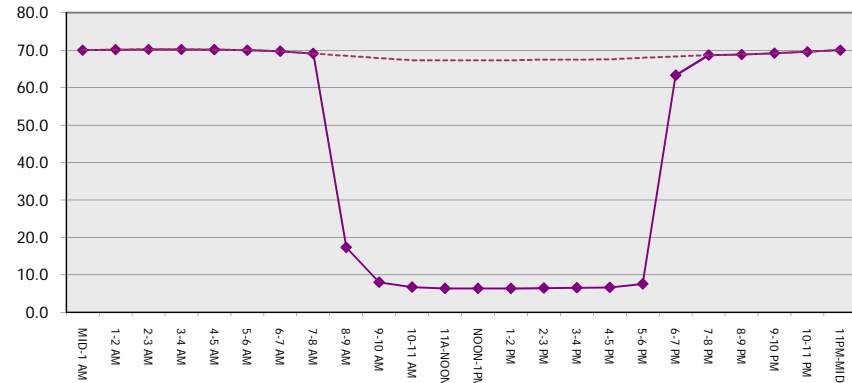
**Main Route Average Delay Per Vehicle (Minutes)**



**Main Route - Average Queue Length (Vehicles)**



**Main Route - Average Speed (MPH)**



<b>IH 94: STH 35 N TO CARMICHAEL RD (ST CROIX COUNTY)</b> <b>OFF-PEAK DAY 2 LANE CLOSURE</b> <b>DIVERSION ROUTE: STH 35 - COULEE RD - CARMICHAEL RD</b>	<b>MAY</b>
	Analyzed for 2009 Construction Season

**SUMMARY OF TRAFFIC MODEL OUTPUT**

SATURDAY EASTBOUND DIRECTION

TIME OF DAY	FLOWS AND CAPACITY IN VEH/HR							TOTAL DIVN FLOW	AV.DEL PER VEH (MINS)	AVERAGE QUEUE (VEH)	AVERAGE SPEEDS IN MPH				
	MAIN		DIVERSION		SITE CAPA CITY	FLOW MAIN ROUTE	FLOW DIVER -TING				MAIN ROUTE		SITE	ALTERNATE ROUTE	
	DEMAND FLOW	PCT HEAVY	NORMAL FLOW	PCT HEAVY							WITHOUT WORK ZN	WITH WORK ZN		WITHOUT WORK ZN	WITH WORK ZN
MID-1 AM	584	0.0	69	0.0	OFF	584	0	69	0.00	0	70.0	70.0	70.0	19.3	19.3
1-2 AM	380	0.0	45	0.0	OFF	380	0	45	0.00	0	70.2	70.2	70.2	19.5	19.5
2-3 AM	301	0.0	36	0.0	OFF	301	0	36	0.00	0	70.2	70.2	70.2	19.6	19.6
3-4 AM	305	0.0	36	0.0	OFF	305	0	36	0.00	0	70.2	70.2	70.2	19.6	19.6
4-5 AM	452	0.0	53	0.0	OFF	452	0	53	0.00	0	70.2	70.2	70.2	19.4	19.4
5-6 AM	642	0.0	75	0.0	OFF	642	0	75	0.00	0	69.9	69.9	69.9	19.3	19.3
6-7 AM	1198	0.0	141	0.0	OFF	1198	0	141	0.00	0	69.2	69.2	69.2	18.8	18.8
7-8 AM	2066	0.0	243	0.0	OFF	2066	0	243	0.00	0	68.2	68.2	68.2	17.9	17.9
8-9 AM	2644	0.0	311	0.0	1499	1999	645	955	12.84	335	67.4	8.2	30.8	17.5	13.6
9-10 AM	3170	0.0	373	0.0	1499	1503	1667	2040+	20.29	504	66.8	6.3	30.8	17.0	9.5
10-11 AM	3322	0.0	391	0.0	1500	1500	1822	2213+	20.32	505	66.6	6.3	30.8	16.8	9.5
11A-NOON	3154	0.0	371	0.0	1500	1501	1653	2025+	20.29	504	66.8	6.3	30.8	17.0	9.5
NOON-1PM	2786	0.0	327	0.0	1500	1490	1295	1623+	19.97	495	67.3	6.3	30.8	17.3	9.6
1-2 PM	2512	0.0	296	0.0	1499	1408	1104	1400	17.94	442	67.6	6.7	30.8	17.5	10.3
2-3 PM	2458	0.0	290	0.0	1500	1479	979	1269	15.86	387	67.7	7.1	30.8	17.6	11.2
3-4 PM	2470	0.0	291	0.0	1500	1502	967	1258	15.71	383	67.7	7.2	30.8	17.6	11.3
4-5 PM	2388	0.0	281	0.0	1499	1461	927	1209	15.07	366	67.8	7.3	30.8	17.6	11.6
5-6 PM	2050	0.0	242	0.0	1499	1403	646	888	11.81	282	68.2	8.4	30.8	17.9	13.8
6-7 PM	1775	0.0	209	0.0	OFF	1775	0	209	0.08	7	68.6	64.9	64.9	18.2	18.2
7-8 PM	1514	0.0	178	0.0	OFF	1514	0	178	0.00	0	68.9	68.9	68.9	18.4	18.4
8-9 PM	1209	0.0	142	0.0	OFF	1209	0	142	0.00	0	69.2	69.2	69.2	18.8	18.8
9-10 PM	1127	0.0	133	0.0	OFF	1127	0	133	0.00	0	69.3	69.3	69.3	18.8	18.8
10-11 PM	863	0.0	101	0.0	OFF	863	0	101	0.00	0	69.7	69.7	69.7	19.1	19.1
11PM-MID	583	0.0	69	0.0	OFF	583	0	69	0.00	0	70.0	70.0	70.0	19.3	19.3

"OFF" INDICATES NO ROAD WORK (ALL LANES OPEN TO TRAFFIC)

+ INDICATES DIVERSION FLOW EXCEEDS USER-SPECIFIED WARNING LIMIT

*----- SITE BREAKDOWN DELAYS -----*	
BREAKDOWN DURATION (MINS)	0
RANGE OF QUEUE DELAY - MIN	0.0
(VEH-H) MAX	0.0
RANGE OF DIVN DELAY - MIN	0.0
(VEH-H) MAX	0.0
AV BREAKDOWNS PER DAY	0.00
AV QUEUE DELAY/DAY (VEH-H)	0.0
AV DIVN DELAY/DAY (VEH-H)	0.0
AV TOTAL DELAY/DAY (VEH-H)	0.0

*----- SITE ACCIDENT DELAYS -----*	
ACCIDENT DURATION (MINS)	0
RANGE OF QUEUE DELAY - MIN	0.0
(VEH-H) MAX	0.0
RANGE OF DIVN DELAY - MIN	0.0
(VEH-H) MAX	0.0
AV ACCIDENTS PER DAY	0.00
AV QUEUE DELAY/DAY (VEH-H)	0.0
AV DIVN DELAY/DAY (VEH-H)	0.0
AV TOTAL DELAY/DAY (VEH-H)	0.0

AVERAGE ACCIDENT NUMBERS (PIA/DAY)	
MAIN ROUTE WITHOUT WORKS	0.0102
MAIN ROUTE WITH WORKS	0.0062
DIVERSION	0.0535

PIA: Personal Injury Accidents

IMPACTS ON ROAD USERS	
ROAD USER COSTS PER DAY ( DOLLARS)	\$142,132
CONGESTED HOURS PER DAY*	8

\*Delays Exceeding 15 Minutes

**IH 94: STH 35 N TO CARMICHAEL RD (ST CROIX COUNTY)  
 OFF-PEAK DAY 2 LANE CLOSURE  
 DIVERSION ROUTE: STH 35 - COULEE RD - CARMICHAEL RD**

**MAY**  
 Analyzed for 2009  
 Construction Season

**GRAPHICAL REPRESENTATION OF TRAFFIC MODEL INPUT AND OUTPUT**  
**SATURDAY EASTBOUND DIRECTION**

