

IH 94: STH 35 N TO CARMICHAEL RD (ST CROIX COUNTY) OFF-PEAK DAY 2 LANE CLOSURE DIVERSION ROUTE: STH 35 - COULEE RD - CARMICHAEL RD	MAY
	Analyzed for 2009 Construction Season

SUMMARY OF TRAFFIC MODEL OUTPUT

MON-THUR WESTBOUND DIRECTION

TIME OF DAY	FLOWS AND CAPACITY IN VEH/HR								AVERAGE SPEEDS IN MPH						
	MAIN ROUTE		ALTERNATE ROUTE		SITE CAPA CITY	FLOW MAIN ROUTE	FLOW DIVER -TING	TOTAL DIVN FLOW	AV.DEL PER VEH (MINS)	AVERAGE QUEUE (VEH)	MAIN ROUTE		ALTERNATE ROUTE		
	DEMAND FLOW	PCT HEAVY	NORMAL FLOW	PCT HEAVY							WITHOUT WORK ZN	WITH WORK ZN	SITE	WITHOUT WORK ZN	WITH WORK ZN
MID-1 AM	492	0.0	58	0.0	OFF	492	0	58	0.00	0	70.1	70.1	70.1	19.4	19.4
1-2 AM	425	0.0	50	0.0	OFF	425	0	50	0.00	0	70.2	70.2	70.2	19.5	19.5
2-3 AM	454	0.0	53	0.0	OFF	454	0	53	0.00	0	70.2	70.2	70.2	19.4	19.4
3-4 AM	651	0.0	76	0.0	OFF	651	0	76	0.00	0	69.9	69.9	69.9	19.3	19.3
4-5 AM	1197	0.0	141	0.0	OFF	1197	0	141	0.00	0	69.2	69.2	69.2	18.8	18.8
5-6 AM	1988	0.0	234	0.0	OFF	1988	0	234	0.00	0	68.2	68.2	68.2	18.0	18.0
6-7 AM	2174	0.0	256	0.0	OFF	2174	0	256	0.00	0	68.1	68.1	68.1	17.9	17.9
7-8 AM	2135	0.0	251	0.0	OFF	2135	0	251	0.00	0	68.1	68.1	68.1	17.9	17.9
8-9 AM	1916	0.0	226	0.0	OFF	1916	0	226	0.00	0	68.4	68.4	68.4	18.1	18.1
9-10 AM	1929	0.0	227	0.0	1499	1739	190	417	6.91	166	68.3	12.0	30.8	18.1	17.0
10-11 AM	2002	0.0	235	0.0	1499	1515	487	722	10.55	247	68.2	9.0	30.8	18.0	15.0
11A-NOON	2080	0.0	245	0.0	1500	1518	563	807	11.16	263	68.1	8.7	30.8	17.9	14.3
NOON-1PM	2197	0.0	258	0.0	1500	1532	665	923	12.08	288	68.0	8.3	30.8	17.8	13.5
1-2 PM	2403	0.0	282	0.0	1500	1562	841	1124	14.05	340	67.8	7.6	30.8	17.6	12.2
2-3 PM	2496	0.0	294	0.0	1499	1536	961	1255	15.66	382	67.6	7.2	30.8	17.6	11.3
3-4 PM	2664	0.0	314	0.0	1500	1574	1090	1404	17.98	443	67.4	6.7	30.8	17.4	10.3
4-5 PM	2692	0.0	317	0.0	OFF	2692	0	317	0.35	34	67.4	54.0	54.0	17.4	17.4
5-6 PM	2317	0.0	273	0.0	OFF	2317	0	273	0.00	0	67.9	67.9	67.9	17.7	17.7
6-7 PM	1987	0.0	234	0.0	OFF	1987	0	234	0.00	0	68.2	68.2	68.2	18.0	18.0
7-8 PM	1705	0.0	201	0.0	OFF	1705	0	201	0.00	0	68.6	68.6	68.6	18.3	18.3
8-9 PM	1496	0.0	176	0.0	OFF	1496	0	176	0.00	0	68.9	68.9	68.9	18.5	18.5
9-10 PM	1200	0.0	141	0.0	OFF	1200	0	141	0.00	0	69.2	69.2	69.2	18.8	18.8
10-11 PM	903	0.0	107	0.0	OFF	903	0	107	0.00	0	69.6	69.6	69.6	19.0	19.0
11PM-MID	594	0.0	70	0.0	OFF	594	0	70	0.00	0	70.0	70.0	70.0	19.3	19.3

"OFF" INDICATES NO ROAD WORK (ALL LANES OPEN TO TRAFFIC)

----- SITE BREAKDOWN DELAYS -----	
BREAKDOWN DURATION (MINS)	0
RANGE OF QUEUE DELAY - MIN	0.0
(VEH-H) MAX	0.0
RANGE OF DIVN DELAY - MIN	0.0
(VEH-H) MAX	0.0
AV BREAKDOWNS PER DAY	0.00
AV QUEUE DELAY/DAY (VEH-H)	0.0
AV DIVN DELAY/DAY (VEH-H)	0.0
AV TOTAL DELAY/DAY (VEH-H)	0.0

----- SITE ACCIDENT DELAYS -----	
ACCIDENT DURATION (MINS)	0
RANGE OF QUEUE DELAY - MIN	0.0
(VEH-H) MAX	0.0
RANGE OF DIVN DELAY - MIN	0.0
(VEH-H) MAX	0.0
AV ACCIDENTS PER DAY	0.00
AV QUEUE DELAY/DAY (VEH-H)	0.0
AV DIVN DELAY/DAY (VEH-H)	0.0
AV TOTAL DELAY/DAY (VEH-H)	0.0

AVERAGE ACCIDENT NUMBERS (PIA/DAY)	
MAIN ROUTE WITHOUT WORKS	0.0102
MAIN ROUTE WITH WORKS	0.0082
DIVERSION	0.0310

PIA: Personal Injury Accidents

IMPACTS ON ROAD USERS	
ROAD USER COSTS PER DAY (DOLLARS)	\$49,120
CONGESTED HOURS PER DAY*	2

*Delays Exceeding 15 Minutes

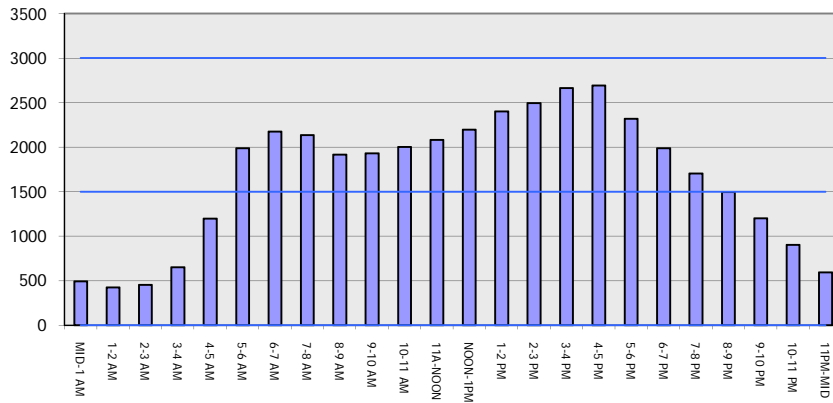
IH 94: STH 35 N TO CARMICHAEL RD (ST CROIX COUNTY)
OFF-PEAK DAY 2 LANE CLOSURE
DIVERSION ROUTE: STH 35 - COULEE RD - CARMICHAEL RD

MAY
 Analyzed for 2009
 Construction Season

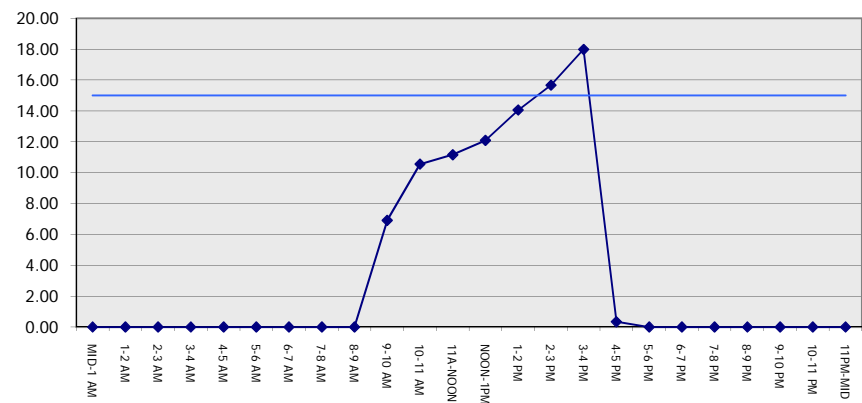
GRAPHICAL REPRESENTATION OF TRAFFIC MODEL INPUT AND OUTPUT

MON-THUR WESTBOUND DIRECTION

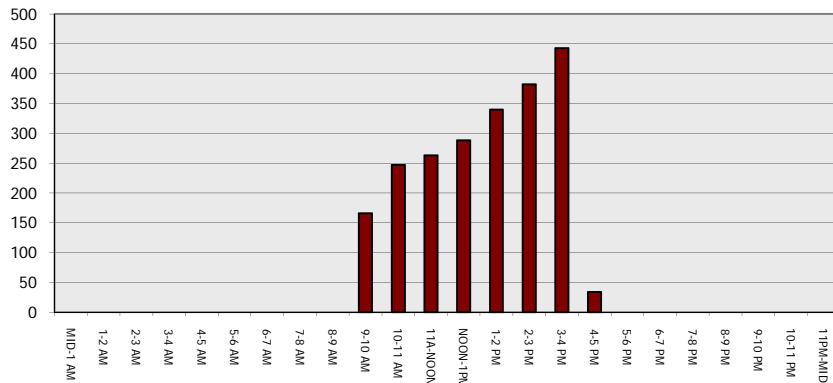
Main Route - Traffic Demand (Vehicles Per Hour)



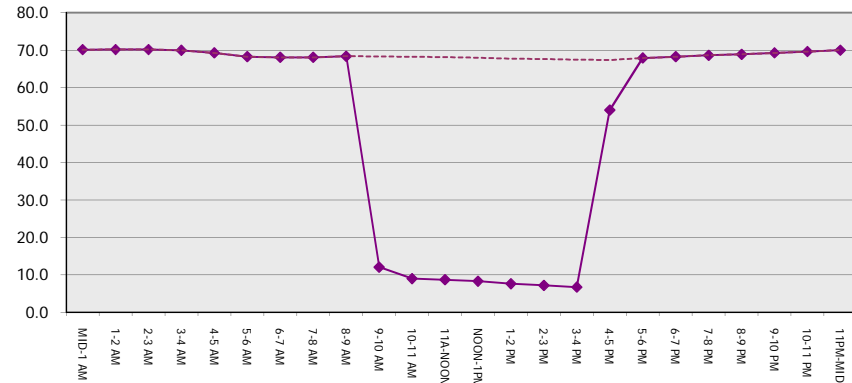
Main Route Average Delay Per Vehicle (Minutes)



Main Route - Average Queue Length (Vehicles)



Main Route - Average Speed (MPH)



IH 94: STH 35 N TO CARMICHAEL RD (ST CROIX COUNTY) OFF-PEAK DAY 2 LANE CLOSURE DIVERSION ROUTE: STH 35 - COULEE RD - CARMICHAEL RD	MAY
	Analyzed for 2009 Construction Season

SUMMARY OF TRAFFIC MODEL OUTPUT

MON-THUR EASTBOUND DIRECTION

TIME OF DAY	FLOWS AND CAPACITY IN VEH/HR							TOTAL			AVERAGE SPEEDS IN MPH				
	MAIN		DIVERSION		SITE CAPA CITY	FLOW MAIN ROUTE	FLOW DIVER -TING	DIVN FLOW	AV.DEL PER VEH (MINS)	AVERAGE QUEUE (VEH)	MAIN ROUTE		ALTERNATE ROUTE		
	DEMAND FLOW	PCT HEAVY	NORMAL FLOW	PCT HEAVY							WITHOUT WORK ZN	WITH WORK ZN	SITE	WITHOUT WORK ZN	WITH WORK ZN
MID-1 AM	455	0.0	53	0.0	OFF	455	0	53	0.00	0	70.2	70.2	70.2	19.4	19.4
1-2 AM	325	0.0	39	0.0	OFF	325	0	39	0.00	0	70.2	70.2	70.2	19.6	19.6
2-3 AM	284	0.0	33	0.0	OFF	284	0	33	0.00	0	70.2	70.2	70.2	19.6	19.6
3-4 AM	327	0.0	39	0.0	OFF	327	0	39	0.00	0	70.2	70.2	70.2	19.6	19.6
4-5 AM	491	0.0	58	0.0	OFF	491	0	58	0.00	0	70.1	70.1	70.1	19.4	19.4
5-6 AM	855	0.0	100	0.0	OFF	855	0	100	0.00	0	69.7	69.7	69.7	19.1	19.1
6-7 AM	1437	0.0	169	0.0	OFF	1437	0	169	0.00	0	68.9	68.9	68.9	18.6	18.6
7-8 AM	1694	0.0	200	0.0	OFF	1694	0	200	0.00	0	68.6	68.6	68.6	18.3	18.3
8-9 AM	1879	0.0	221	0.0	OFF	1879	0	221	0.00	0	68.4	68.4	68.4	18.1	18.1
9-10 AM	2223	0.0	262	0.0	1499	1820	402	664	9.91	246	68.0	9.4	30.8	17.8	15.4
10-11 AM	2324	0.0	274	0.0	1500	1515	810	1084	13.61	328	67.9	7.8	30.8	17.7	12.5
11A-NOON	2311	0.0	272	0.0	1499	1494	817	1089	13.67	329	67.9	7.8	30.8	17.8	12.4
NOON-1PM	2338	0.0	275	0.0	1500	1512	825	1101	13.79	333	67.8	7.7	30.8	17.7	12.4
1-2 PM	2466	0.0	291	0.0	1500	1550	916	1207	15.04	366	67.7	7.3	30.8	17.6	11.6
2-3 PM	2681	0.0	316	0.0	1500	1602	1079	1395	17.84	440	67.4	6.7	30.8	17.4	10.4
3-4 PM	3014	0.0	355	0.0	1499	1508	1507	1861+	20.18	501	67.0	6.3	30.8	17.1	9.6
4-5 PM	2831	0.0	334	0.0	OFF	2831	0	334	0.41	39	67.2	52.2	52.2	17.3	17.3
5-6 PM	2374	0.0	279	0.0	OFF	2374	0	279	0.00	0	67.8	67.8	67.8	17.7	17.7
6-7 PM	2067	0.0	244	0.0	OFF	2067	0	244	0.00	0	68.2	68.2	68.2	17.9	17.9
7-8 PM	1708	0.0	201	0.0	OFF	1708	0	201	0.00	0	68.6	68.6	68.6	18.3	18.3
8-9 PM	1338	0.0	158	0.0	OFF	1338	0	158	0.00	0	69.1	69.1	69.1	18.6	18.6
9-10 PM	1146	0.0	135	0.0	OFF	1146	0	135	0.00	0	69.3	69.3	69.3	18.8	18.8
10-11 PM	917	0.0	108	0.0	OFF	917	0	108	0.00	0	69.6	69.6	69.6	19.0	19.0
11PM-MID	587	0.0	69	0.0	OFF	587	0	69	0.00	0	70.0	70.0	70.0	19.3	19.3

"OFF" INDICATES NO ROAD WORK (ALL LANES OPEN TO TRAFFIC)

+ INDICATES DIVERSION FLOW EXCEEDS USER-SPECIFIED WARNING LIMIT

----- SITE BREAKDOWN DELAYS -----	
BREAKDOWN DURATION (MINS)	0
RANGE OF QUEUE DELAY - MIN	0.0
(VEH-H) MAX	0.0
RANGE OF DIVN DELAY - MIN	0.0
(VEH-H) MAX	0.0
AV BREAKDOWNS PER DAY	0.00
AV QUEUE DELAY/DAY (VEH-H)	0.0
AV DIVN DELAY/DAY (VEH-H)	0.0
AV TOTAL DELAY/DAY (VEH-H)	0.0

----- SITE ACCIDENT DELAYS -----	
ACCIDENT DURATION (MINS)	0
RANGE OF QUEUE DELAY - MIN	0.0
(VEH-H) MAX	0.0
RANGE OF DIVN DELAY - MIN	0.0
(VEH-H) MAX	0.0
AV ACCIDENTS PER DAY	0.00
AV QUEUE DELAY/DAY (VEH-H)	0.0
AV DIVN DELAY/DAY (VEH-H)	0.0
AV TOTAL DELAY/DAY (VEH-H)	0.0

AVERAGE ACCIDENT NUMBERS (PIA/DAY)	
MAIN ROUTE WITHOUT WORKS	0.0097
MAIN ROUTE WITH WORKS	0.0073
DIVERSION	0.0354

PIA: Personal Injury Accidents

IMPACTS ON ROAD USERS	
ROAD USER COSTS PER DAY (DOLLARS)	\$63,076
CONGESTED HOURS PER DAY*	3

*Delays Exceeding 15 Minutes

**IH 94: STH 35 N TO CARMICHAEL RD (ST CROIX COUNTY)
 OFF-PEAK DAY 2 LANE CLOSURE
 DIVERSION ROUTE: STH 35 - COULEE RD - CARMICHAEL RD**

MAY
 Analyzed for 2009
 Construction Season

GRAPHICAL REPRESENTATION OF TRAFFIC MODEL INPUT AND OUTPUT
MON-THUR EASTBOUND DIRECTION

