

<b>IH 94: STH 35 N TO CARMICHAEL RD (ST CROIX COUNTY)</b> <b>OFF-PEAK DAY 2 LANE CLOSURE</b> <b>DIVERSION ROUTE: STH 35 - COULEE RD - CARMICHAEL RD</b>	<b>MAY</b>
	Analyzed for 2009 Construction Season

**SUMMARY OF TRAFFIC MODEL OUTPUT**

**FRIDAY WESTBOUND DIRECTION**

TIME OF DAY	FLOWS AND CAPACITY IN VEH/HR										AVERAGE SPEEDS IN MPH				
	MAIN ROUTE		ALTERNATE ROUTE		SITE CAPA CITY	FLOW MAIN ROUTE	FLOW DIVER -TING	TOTAL DIVN FLOW	AV.DEL PER VEH (MINS)	AVERAGE QUEUE (VEH)	MAIN ROUTE		ALTERNATE ROUTE		
	DEMAND FLOW	PCT HEAVY	NORMAL FLOW	PCT HEAVY							WITHOUT WORK ZN	WITH WORK ZN	SITE	WITHOUT WORK ZN	WITH WORK ZN
MID-1 AM	601	0.0	71	0.0	OFF	601	0	71	0.00	0	70.0	70.0	70.0	19.3	19.3
1-2 AM	561	0.0	66	0.0	OFF	561	0	66	0.00	0	70.0	70.0	70.0	19.4	19.4
2-3 AM	545	0.0	64	0.0	OFF	545	0	64	0.00	0	70.0	70.0	70.0	19.4	19.4
3-4 AM	619	0.0	73	0.0	OFF	619	0	73	0.00	0	70.0	70.0	70.0	19.3	19.3
4-5 AM	1011	0.0	119	0.0	OFF	1011	0	119	0.00	0	69.5	69.5	69.5	18.9	18.9
5-6 AM	1738	0.0	205	0.0	OFF	1738	0	205	0.00	0	68.6	68.6	68.6	18.3	18.3
6-7 AM	2322	0.0	273	0.0	OFF	2322	0	273	0.00	0	67.9	67.9	67.9	17.7	17.7
7-8 AM	2308	0.0	272	0.0	OFF	2308	0	272	0.00	0	67.9	67.9	67.9	17.8	17.8
8-9 AM	2116	0.0	249	0.0	OFF	2116	0	249	0.00	0	68.1	68.1	68.1	17.9	17.9
9-10 AM	2189	0.0	257	0.0	1499	1802	386	644	9.79	240	68.0	9.5	30.8	17.8	15.5
10-11 AM	2271	0.0	267	0.0	1500	1522	749	1016	12.93	310	67.9	8.0	30.8	17.8	12.9
11A-NOON	2476	0.0	292	0.0	1500	1575	901	1193	14.87	361	67.6	7.4	30.8	17.6	11.7
NOON-1PM	2770	0.0	326	0.0	1500	1586	1185	1511	18.75	464	67.3	6.6	30.8	17.3	10.1
1-2 PM	3096	0.0	364	0.0	1500	1514	1583	1947+	20.24	502	66.9	6.3	30.8	17.0	9.6
2-3 PM	3193	0.0	376	0.0	1500	1502	1691	2067+	20.31	504	66.8	6.3	30.8	16.9	9.5
3-4 PM	3387	0.0	399	0.0	1500	1500	1887	2285+	20.32	505	66.5	6.3	30.8	16.8	9.5
4-5 PM	3423	0.0	403	0.0	OFF	3423	0	403	0.54	48	66.5	48.4	48.4	16.7	16.7
5-6 PM	3277	0.0	386	0.0	OFF	3277	0	386	0.00	0	66.6	66.6	66.6	16.8	16.8
6-7 PM	2855	0.0	336	0.0	OFF	2855	0	336	0.00	0	67.2	67.2	67.2	17.2	17.2
7-8 PM	2369	0.0	279	0.0	OFF	2369	0	279	0.00	0	67.8	67.8	67.8	17.7	17.7
8-9 PM	2157	0.0	254	0.0	OFF	2157	0	254	0.00	0	68.1	68.1	68.1	17.9	17.9
9-10 PM	1833	0.0	216	0.0	OFF	1833	0	216	0.00	0	68.4	68.4	68.4	18.2	18.2
10-11 PM	1467	0.0	173	0.0	OFF	1467	0	173	0.00	0	68.9	68.9	68.9	18.5	18.5
11PM-MID	956	0.0	113	0.0	OFF	956	0	113	0.00	0	69.6	69.6	69.6	19.0	19.0

"OFF" INDICATES NO ROAD WORK (ALL LANES OPEN TO TRAFFIC)

+ INDICATES DIVERSION FLOW EXCEEDS USER-SPECIFIED WARNING LIMIT

*----- SITE BREAKDOWN DELAYS -----*	
BREAKDOWN DURATION (MINS)	0
RANGE OF QUEUE DELAY - MIN	0.0
(VEH-H) MAX	0.0
RANGE OF DIVN DELAY - MIN	0.0
(VEH-H) MAX	0.0
AV BREAKDOWNS PER DAY	0.00
AV QUEUE DELAY/DAY (VEH-H)	0.0
AV DIVN DELAY/DAY (VEH-H)	0.0
AV TOTAL DELAY/DAY (VEH-H)	0.0

*----- SITE ACCIDENT DELAYS -----*	
ACCIDENT DURATION (MINS)	0
RANGE OF QUEUE DELAY - MIN	0.0
(VEH-H) MAX	0.0
RANGE OF DIVN DELAY - MIN	0.0
(VEH-H) MAX	0.0
AV ACCIDENTS PER DAY	0.00
AV QUEUE DELAY/DAY (VEH-H)	0.0
AV DIVN DELAY/DAY (VEH-H)	0.0
AV TOTAL DELAY/DAY (VEH-H)	0.0

AVERAGE ACCIDENT NUMBERS (PIA/DAY)	
MAIN ROUTE WITHOUT WORKS	0.0126
MAIN ROUTE WITH WORKS	0.0097
DIVERSION	0.0464

PIA: Personal Injury Accidents

IMPACTS ON ROAD USERS	
ROAD USER COSTS PER DAY ( DOLLARS)	\$83,586
CONGESTED HOURS PER DAY*	4

\*Delays Exceeding 15 Minutes

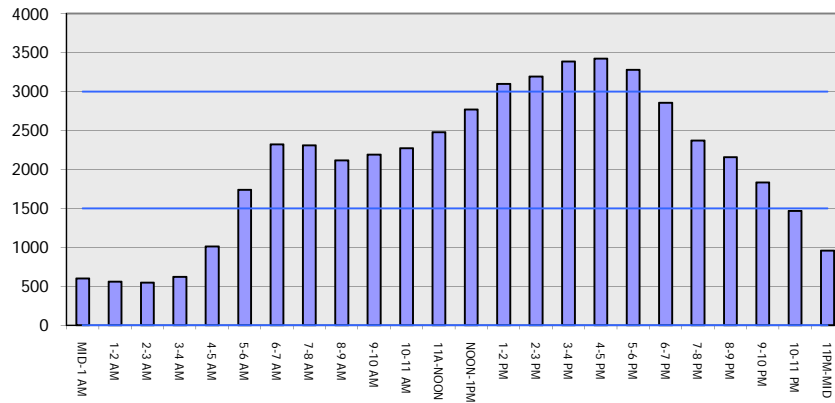
**IH 94: STH 35 N TO CARMICHAEL RD (ST CROIX COUNTY)**  
**OFF-PEAK DAY 2 LANE CLOSURE**  
**DIVERSION ROUTE: STH 35 - COULEE RD - CARMICHAEL RD**

**MAY**  
 Analyzed for 2009  
 Construction Season

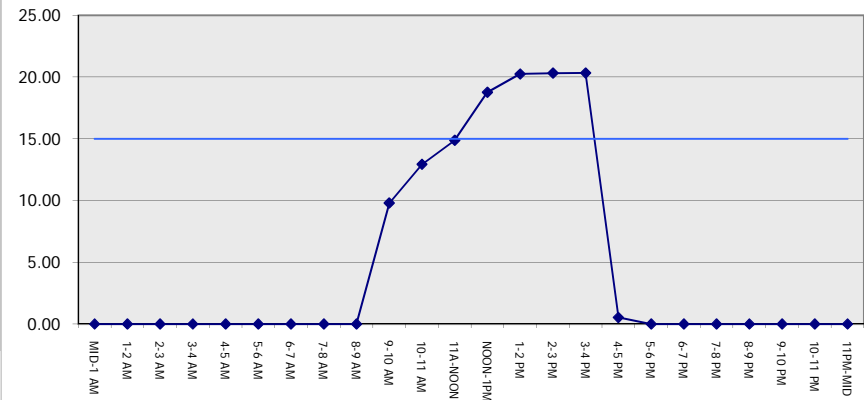
**GRAPHICAL REPRESENTATION OF TRAFFIC MODEL INPUT AND OUTPUT**

**FRIDAY WESTBOUND DIRECTION**

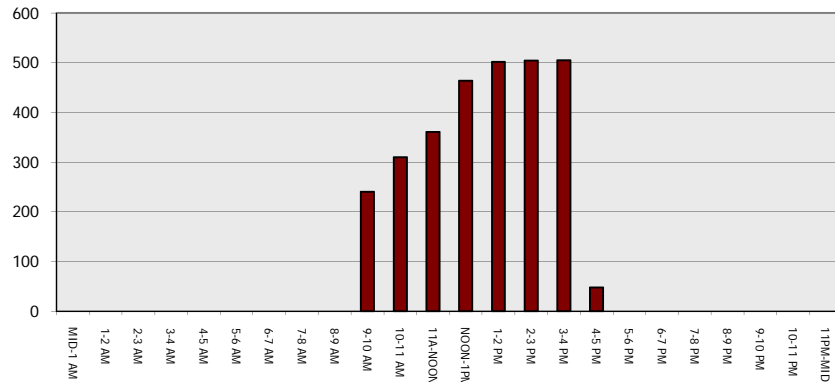
**Main Route - Traffic Demand (Vehicles Per Hour)**



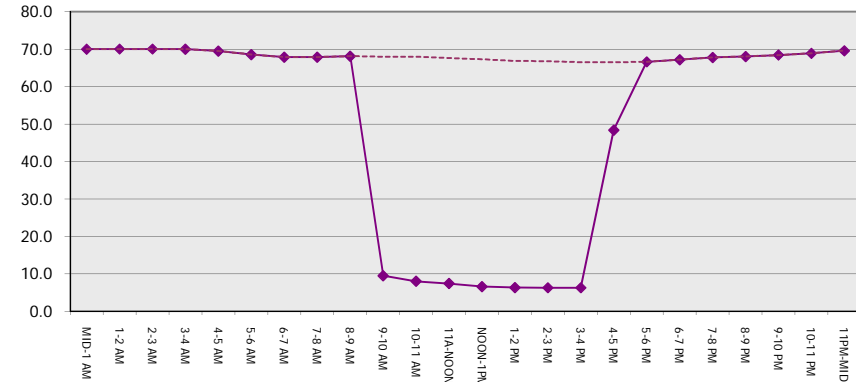
**Main Route Average Delay Per Vehicle (Minutes)**



**Main Route - Average Queue Length (Vehicles)**



**Main Route - Average Speed (MPH)**



<b>IH 94: STH 35 N TO CARMICHAEL RD (ST CROIX COUNTY)</b> <b>OFF-PEAK DAY 2 LANE CLOSURE</b> <b>DIVERSION ROUTE: STH 35 - COULEE RD - CARMICHAEL RD</b>	<b>MAY</b>
	Analyzed for 2009 Construction Season

<b>SUMMARY OF TRAFFIC MODEL OUTPUT</b>	
FRIDAY	EASTBOUND DIRECTION

TIME OF DAY	FLOWS AND CAPACITY IN VEH/HR							AVERAGE SPEEDS IN MPH							
	MAIN		DIVERSION		SITE CAPA CITY	FLOW MAIN ROUTE	FLOW DIVER -TING	TOTAL DIVN FLOW	AV.DEL PER VEH (MINS)	AVERAGE QUEUE (VEH)	MAIN ROUTE		ALTERNATE ROUTE		
	DEMAND FLOW	PCT HEAVY	NORMAL FLOW	PCT HEAVY							WITHOUT WORK ZN	WITH WORK ZN	SITE	WITHOUT WORK ZN	WITH WORK ZN
MID-1 AM	581	0.0	68	0.0	OFF	581	0	68	0.00	0	70.0	70.0	70.0	19.3	19.3
1-2 AM	378	0.0	44	0.0	OFF	378	0	44	0.00	0	70.2	70.2	70.2	19.5	19.5
2-3 AM	369	0.0	44	0.0	OFF	369	0	44	0.00	0	70.2	70.2	70.2	19.5	19.5
3-4 AM	358	0.0	42	0.0	OFF	358	0	42	0.00	0	70.2	70.2	70.2	19.6	19.6
4-5 AM	533	0.0	63	0.0	OFF	533	0	63	0.00	0	70.0	70.0	70.0	19.4	19.4
5-6 AM	827	0.0	97	0.0	OFF	827	0	97	0.00	0	69.7	69.7	69.7	19.1	19.1
6-7 AM	1397	0.0	164	0.0	OFF	1397	0	164	0.00	0	69.0	69.0	69.0	18.6	18.6
7-8 AM	2093	0.0	246	0.0	OFF	2093	0	246	0.00	0	68.1	68.1	68.1	17.9	17.9
8-9 AM	2361	0.0	278	0.0	OFF	2361	0	278	0.00	0	67.8	67.8	67.8	17.7	17.7
9-10 AM	2945	0.0	346	0.0	1499	1996	949	1296	14.34	372	67.1	7.7	30.8	17.1	12.5
10-11 AM	3261	0.0	384	0.0	1500	1500	1761	2145+	20.32	505	66.7	6.3	30.8	16.8	9.5
11A-NOON	3399	0.0	400	0.0	1499	1500	1899	2299+	20.32	505	66.5	6.3	30.8	16.7	9.5
NOON-1PM	3609	0.0	425	0.0	1499	1500	2109	2534+	20.31	505	66.2	6.3	30.8	16.5	9.5
1-2 PM	4152	0.0	489	0.0	1500	1500	2652	3140+	20.18	505	62.5	6.3	30.8	16.0	9.5
2-3 PM	4184	0.0	493	0.0	1500	1500	2684	3176+	20.17	505	62.3	6.3	30.8	16.0	9.5
3-4 PM	4599	0.0	542	0.0	1500	1500	3099	3641+	20.07	505	59.4	6.3	30.8	15.6	9.5
4-5 PM	4687	0.0	551	0.0	OFF	4687	0	551	1.04	93	58.8	36.0	36.0	15.5	15.5
5-6 PM	4501	0.0	529	0.0	OFF	4501	0	529	0.00	0	60.1	60.1	60.1	15.7	15.7
6-7 PM	4318	0.0	508	0.0	OFF	4318	0	508	0.00	0	61.4	61.4	61.4	15.9	15.9
7-8 PM	3003	0.0	354	0.0	OFF	3003	0	354	0.00	0	67.0	67.0	67.0	17.1	17.1
8-9 PM	2013	0.0	236	0.0	OFF	2013	0	236	0.00	0	68.2	68.2	68.2	18.0	18.0
9-10 PM	1486	0.0	175	0.0	OFF	1486	0	175	0.00	0	68.9	68.9	68.9	18.5	18.5
10-11 PM	1221	0.0	143	0.0	OFF	1221	0	143	0.00	0	69.2	69.2	69.2	18.8	18.8
11PM-MID	917	0.0	108	0.0	OFF	917	0	108	0.00	0	69.6	69.6	69.6	19.0	19.0

"OFF" INDICATES NO ROAD WORK (ALL LANES OPEN TO TRAFFIC)

+ INDICATES DIVERSION FLOW EXCEEDS USER-SPECIFIED WARNING LIMIT

*----- SITE BREAKDOWN DELAYS -----*	
BREAKDOWN DURATION (MINS)	0
RANGE OF QUEUE DELAY - MIN	0.0
(VEH-H) MAX	0.0
RANGE OF DIVN DELAY - MIN	0.0
(VEH-H) MAX	0.0
AV BREAKDOWNS PER DAY	0.00
AV QUEUE DELAY/DAY (VEH-H)	0.0
AV DIVN DELAY/DAY (VEH-H)	0.0
AV TOTAL DELAY/DAY (VEH-H)	0.0

*----- SITE ACCIDENT DELAYS -----*	
ACCIDENT DURATION (MINS)	0
RANGE OF QUEUE DELAY - MIN	0.0
(VEH-H) MAX	0.0
RANGE OF DIVN DELAY - MIN	0.0
(VEH-H) MAX	0.0
AV ACCIDENTS PER DAY	0.00
AV QUEUE DELAY/DAY (VEH-H)	0.0
AV DIVN DELAY/DAY (VEH-H)	0.0
AV TOTAL DELAY/DAY (VEH-H)	0.0

AVERAGE ACCIDENT NUMBERS (PIA/DAY)	
MAIN ROUTE WITHOUT WORKS	0.0145
MAIN ROUTE WITH WORKS	0.0100
DIVERSION	0.0714

PIA: Personal Injury Accidents

IMPACTS ON ROAD USERS	
ROAD USER COSTS PER DAY ( DOLLARS)	\$127,759
CONGESTED HOURS PER DAY*	6

\*Delays Exceeding 15 Minutes

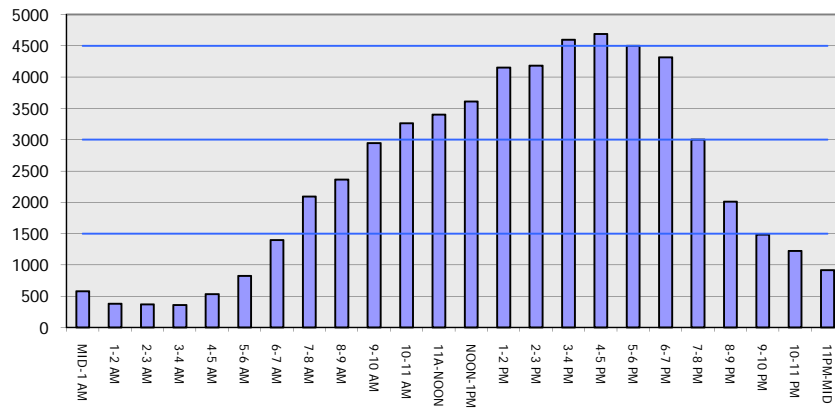
**IH 94: STH 35 N TO CARMICHAEL RD (ST CROIX COUNTY)  
 OFF-PEAK DAY 2 LANE CLOSURE  
 DIVERSION ROUTE: STH 35 - COULEE RD - CARMICHAEL RD**

**MAY**  
 Analyzed for 2009  
 Construction Season

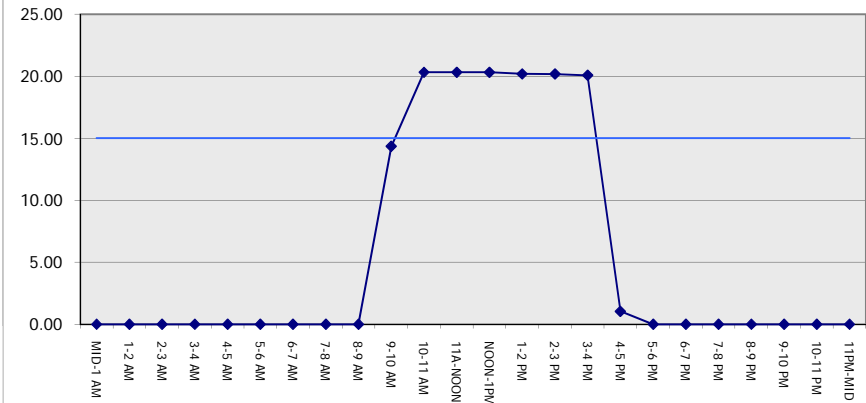
**GRAPHICAL REPRESENTATION OF TRAFFIC MODEL INPUT AND OUTPUT**

**FRIDAY EASTBOUND DIRECTION**

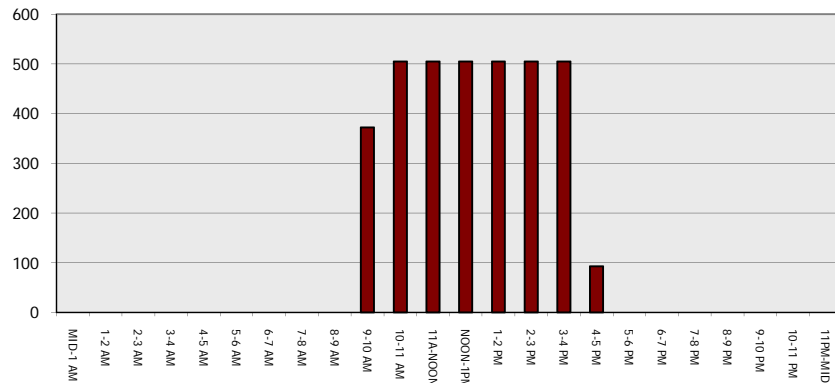
**Main Route - Traffic Demand (Vehicles Per Hour)**



**Main Route Average Delay Per Vehicle (Minutes)**



**Main Route - Average Queue Length (Vehicles)**



**Main Route - Average Speed (MPH)**

