

IH 94: STH 35 N TO CARMICHAEL RD (ST CROIX COUNTY) OFF-PEAK CLOSURE DIVERSION ROUTE: STH 35 - COULEE RD - CARMICHAEL RD	MAY
	Analyzed for 2009 Construction Season

SUMMARY OF TRAFFIC MODEL OUTPUT

FRIDAY WESTBOUND DIRECTION

TIME OF DAY	FLOWS AND CAPACITY IN VEH/HR						AVERAGE SPEEDS IN MPH								
	MAIN ROUTE		ALTERNATE ROUTE		SITE CAPA CITY	FLOW MAIN ROUTE	FLOW DIVER -TING	TOTAL DIVN FLOW	AV.DEL PER VEH (MINS)	AVERAGE QUEUE (VEH)	MAIN ROUTE		ALTERNATE ROUTE		
	DEMAND FLOW	PCT HEAVY	NORMAL FLOW	PCT HEAVY							WITHOUT WORK ZN	WITH WORK ZN	SITE	WITHOUT WORK ZN	WITH WORK ZN
MID-1 AM	601	0.0	71	0.0	OFF	601	0	71	0.00	0	70.0	70.0	70.0	19.3	19.3
1-2 AM	561	0.0	66	0.0	OFF	561	0	66	0.00	0	70.0	70.0	70.0	19.4	19.4
2-3 AM	545	0.0	64	0.0	OFF	545	0	64	0.00	0	70.0	70.0	70.0	19.4	19.4
3-4 AM	619	0.0	73	0.0	OFF	619	0	73	0.00	0	70.0	70.0	70.0	19.3	19.3
4-5 AM	1011	0.0	119	0.0	OFF	1011	0	119	0.00	0	69.5	69.5	69.5	18.9	18.9
5-6 AM	1738	0.0	205	0.0	OFF	1738	0	205	0.00	0	68.6	68.6	68.6	18.3	18.3
6-7 AM	2322	0.0	273	0.0	OFF	2322	0	273	0.00	0	67.9	67.9	67.9	17.7	17.7
7-8 AM	2308	0.0	272	0.0	OFF	2308	0	272	0.00	0	67.9	67.9	67.9	17.8	17.8
8-9 AM	2116	0.0	249	0.0	OFF	2116	0	249	0.00	0	68.1	68.1	68.1	17.9	17.9
9-10 AM	2189	0.0	257	0.0	3000	2189	0	257	0.33	0	68.0	55.0	49.7	17.8	17.8
10-11 AM	2271	0.0	267	0.0	3000	2271	0	267	0.33	0	67.9	55.0	49.7	17.8	17.8
11A-NOON	2476	0.0	292	0.0	3000	2476	0	292	0.39	0	67.6	53.2	47.4	17.6	17.6
NOON-1PM	2770	0.0	326	0.0	2999	2770	0	326	0.58	0	67.3	47.9	41.2	17.3	17.3
1-2 PM	3096	0.0	364	0.0	2999	3096	0	364	1.29	35	66.9	35.1	37.3	17.0	17.0
2-3 PM	3193	0.0	376	0.0	3000	3193	0	376	3.94	184	66.8	18.6	37.3	16.9	17.3
3-4 PM	3387	0.0	399	0.0	3000	3273	114	513	8.78	451	66.5	12.4	37.3	16.8	18.0
4-5 PM	3423	0.0	403	0.0	OFF	3423	0	403	0.68	61	66.5	45.2	45.2	16.7	16.7
5-6 PM	3277	0.0	386	0.0	OFF	3277	0	386	0.00	0	66.6	66.6	66.6	16.8	16.8
6-7 PM	2855	0.0	336	0.0	OFF	2855	0	336	0.00	0	67.2	67.2	67.2	17.2	17.2
7-8 PM	2369	0.0	279	0.0	OFF	2369	0	279	0.00	0	67.8	67.8	67.8	17.7	17.7
8-9 PM	2157	0.0	254	0.0	OFF	2157	0	254	0.00	0	68.1	68.1	68.1	17.9	17.9
9-10 PM	1833	0.0	216	0.0	OFF	1833	0	216	0.00	0	68.4	68.4	68.4	18.2	18.2
10-11 PM	1467	0.0	173	0.0	OFF	1467	0	173	0.00	0	68.9	68.9	68.9	18.5	18.5
11PM-MID	956	0.0	113	0.0	OFF	956	0	113	0.00	0	69.6	69.6	69.6	19.0	19.0

"OFF" INDICATES NO ROAD WORK (ALL LANES OPEN TO TRAFFIC)

----- SITE BREAKDOWN DELAYS -----	
BREAKDOWN DURATION (MINS)	0
RANGE OF QUEUE DELAY - MIN	0.0
(VEH-H) MAX	0.0
RANGE OF DIVN DELAY - MIN	0.0
(VEH-H) MAX	0.0
AV BREAKDOWNS PER DAY	0.00
AV QUEUE DELAY/DAY (VEH-H)	0.0
AV DIVN DELAY/DAY (VEH-H)	0.0
AV TOTAL DELAY/DAY (VEH-H)	0.0

----- SITE ACCIDENT DELAYS -----	
ACCIDENT DURATION (MINS)	0
RANGE OF QUEUE DELAY - MIN	0.0
(VEH-H) MAX	0.0
RANGE OF DIVN DELAY - MIN	0.0
(VEH-H) MAX	0.0
AV ACCIDENTS PER DAY	0.00
AV QUEUE DELAY/DAY (VEH-H)	0.0
AV DIVN DELAY/DAY (VEH-H)	0.0
AV TOTAL DELAY/DAY (VEH-H)	0.0

AVERAGE ACCIDENT NUMBERS (PIA/DAY)	
MAIN ROUTE WITHOUT WORKS	0.0126
MAIN ROUTE WITH WORKS	0.0113
DIVERSION	0.0194

PIA: Personal Injury Accidents

IMPACTS ON ROAD USERS	
ROAD USER COSTS PER DAY (DOLLARS)	\$11,250
CONGESTED HOURS PER DAY*	0

*Delays Exceeding 15 Minutes

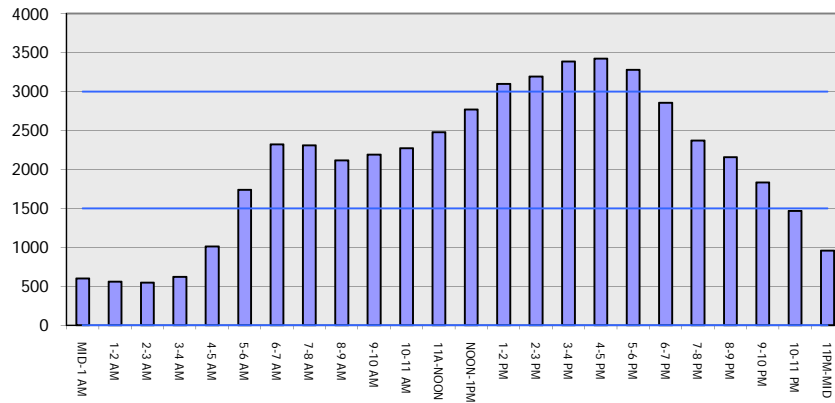
IH 94: STH 35 N TO CARMICHAEL RD (ST CROIX COUNTY)
OFF-PEAK CLOSURE
DIVERSION ROUTE: STH 35 - COULEE RD - CARMICHAEL RD

MAY
 Analyzed for 2009
 Construction Season

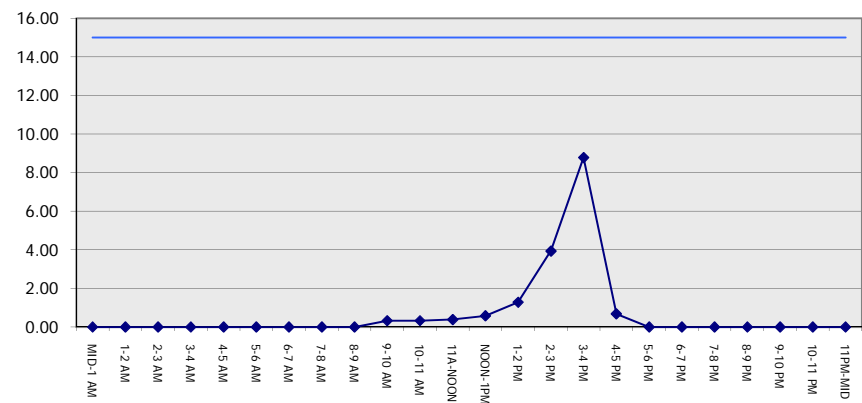
GRAPHICAL REPRESENTATION OF TRAFFIC MODEL INPUT AND OUTPUT

FRIDAY WESTBOUND DIRECTION

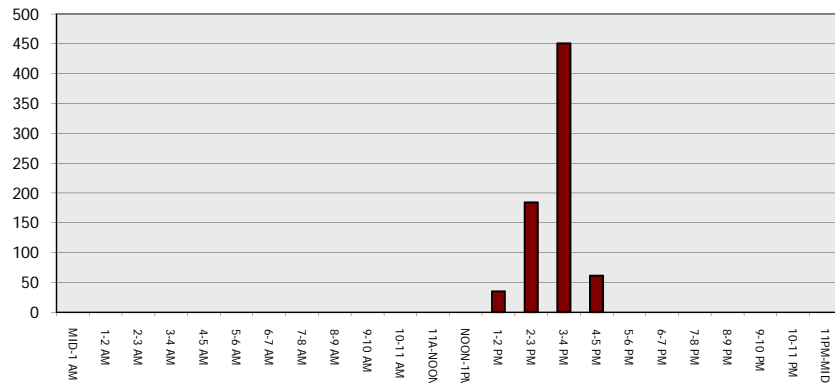
Main Route - Traffic Demand (Vehicles Per Hour)



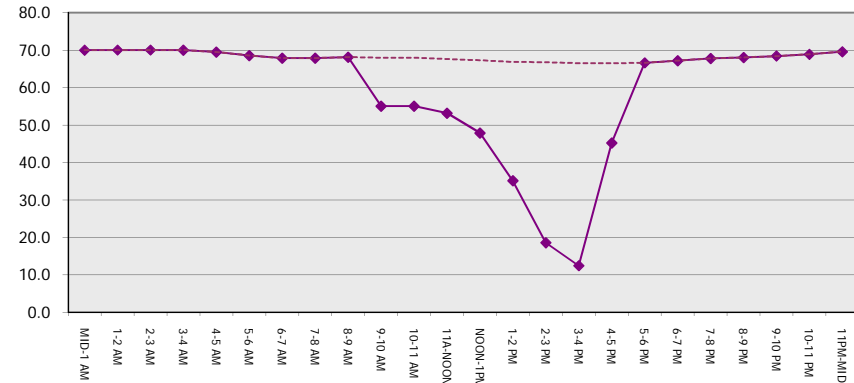
Main Route Average Delay Per Vehicle (Minutes)



Main Route - Average Queue Length (Vehicles)



Main Route - Average Speed (MPH)



IH 94: STH 35 N TO CARMICHAEL RD (ST CROIX COUNTY) OFF-PEAK CLOSURE DIVERSION ROUTE: STH 35 - COULEE RD - CARMICHAEL RD	MAY
	Analyzed for 2009 Construction Season

SUMMARY OF TRAFFIC MODEL OUTPUT	
FRIDAY	EASTBOUND DIRECTION

TIME OF DAY	FLOWS AND CAPACITY IN VEH/HR							AVERAGE SPEEDS IN MPH							
	MAIN		DIVERSION		SITE CAPA CITY	FLOW MAIN ROUTE	FLOW DIVER -TING	TOTAL DIVN FLOW	AV.DEL PER VEH (MINS)	AVERAGE QUEUE (VEH)	MAIN ROUTE		ALTERNATE ROUTE		
	DEMAND FLOW	PCT HEAVY	NORMAL FLOW	PCT HEAVY							WITHOUT WORK ZN	WITH WORK ZN	SITE	WITHOUT WORK ZN	WITH WORK ZN
MID-1 AM	581	0.0	68	0.0	OFF	581	0	68	0.00	0	70.0	70.0	70.0	19.3	19.3
1-2 AM	378	0.0	44	0.0	OFF	378	0	44	0.00	0	70.2	70.2	70.2	19.5	19.5
2-3 AM	369	0.0	44	0.0	OFF	369	0	44	0.00	0	70.2	70.2	70.2	19.5	19.5
3-4 AM	358	0.0	42	0.0	OFF	358	0	42	0.00	0	70.2	70.2	70.2	19.6	19.6
4-5 AM	533	0.0	63	0.0	OFF	533	0	63	0.00	0	70.0	70.0	70.0	19.4	19.4
5-6 AM	827	0.0	97	0.0	OFF	827	0	97	0.00	0	69.7	69.7	69.7	19.1	19.1
6-7 AM	1397	0.0	164	0.0	OFF	1397	0	164	0.00	0	69.0	69.0	69.0	18.6	18.6
7-8 AM	2093	0.0	246	0.0	OFF	2093	0	246	0.00	0	68.1	68.1	68.1	17.9	17.9
8-9 AM	2361	0.0	278	0.0	OFF	2361	0	278	0.00	0	67.8	67.8	67.8	17.7	17.7
9-10 AM	2945	0.0	346	0.0	2999	2945	0	346	0.79	7	67.1	43.2	38.6	17.1	17.1
10-11 AM	3261	0.0	384	0.0	3000	3261	0	384	3.07	145	66.7	21.9	37.3	16.8	17.1
11A-NOON	3399	0.0	400	0.0	3000	3281	119	518	8.81	452	66.5	12.4	37.3	16.7	18.0
NOON-1PM	3609	0.0	425	0.0	2999	3135	475	899	12.18	633	66.2	10.8	37.3	16.5	15.8
1-2 PM	4152	0.0	489	0.0	3000	3346	806	1294	16.61	889	62.5	9.6	37.3	16.0	13.4
2-3 PM	4184	0.0	493	0.0	2999	3060	1124	1617+	20.30	1092	62.3	9.0	37.3	16.0	12.0
3-4 PM	4599	0.0	542	0.0	3000	3059	1541	2083+	21.31	1157	59.4	8.9	37.3	15.6	11.7
4-5 PM	4687	0.0	551	0.0	OFF	4687	0	551	5.46	520	58.8	13.5	13.5	15.5	15.5
5-6 PM	4501	0.0	529	0.0	OFF	4501	0	529	0.00	0	60.1	60.1	60.1	15.7	15.7
6-7 PM	4318	0.0	508	0.0	OFF	4318	0	508	0.00	0	61.4	61.4	61.4	15.9	15.9
7-8 PM	3003	0.0	354	0.0	OFF	3003	0	354	0.00	0	67.0	67.0	67.0	17.1	17.1
8-9 PM	2013	0.0	236	0.0	OFF	2013	0	236	0.00	0	68.2	68.2	68.2	18.0	18.0
9-10 PM	1486	0.0	175	0.0	OFF	1486	0	175	0.00	0	68.9	68.9	68.9	18.5	18.5
10-11 PM	1221	0.0	143	0.0	OFF	1221	0	143	0.00	0	69.2	69.2	69.2	18.8	18.8
11PM-MID	917	0.0	108	0.0	OFF	917	0	108	0.00	0	69.6	69.6	69.6	19.0	19.0

"OFF" INDICATES NO ROAD WORK (ALL LANES OPEN TO TRAFFIC)

+ INDICATES DIVERSION FLOW EXCEEDS USER-SPECIFIED WARNING LIMIT

----- SITE BREAKDOWN DELAYS -----	
BREAKDOWN DURATION (MINS)	0
RANGE OF QUEUE DELAY - MIN	0.0
(VEH-H) MAX	0.0
RANGE OF DIVN DELAY - MIN	0.0
(VEH-H) MAX	0.0
AV BREAKDOWNS PER DAY	0.00
AV QUEUE DELAY/DAY (VEH-H)	0.0
AV DIVN DELAY/DAY (VEH-H)	0.0
AV TOTAL DELAY/DAY (VEH-H)	0.0

----- SITE ACCIDENT DELAYS -----	
ACCIDENT DURATION (MINS)	0
RANGE OF QUEUE DELAY - MIN	0.0
(VEH-H) MAX	0.0
RANGE OF DIVN DELAY - MIN	0.0
(VEH-H) MAX	0.0
AV ACCIDENTS PER DAY	0.00
AV QUEUE DELAY/DAY (VEH-H)	0.0
AV DIVN DELAY/DAY (VEH-H)	0.0
AV TOTAL DELAY/DAY (VEH-H)	0.0

AVERAGE ACCIDENT NUMBERS (PIA/DAY)	
MAIN ROUTE WITHOUT WORKS	0.0145
MAIN ROUTE WITH WORKS	0.0120
DIVERSION	0.0352

PIA: Personal Injury Accidents

IMPACTS ON ROAD USERS	
ROAD USER COSTS PER DAY (DOLLARS)	\$77,670
CONGESTED HOURS PER DAY*	3

*Delays Exceeding 15 Minutes

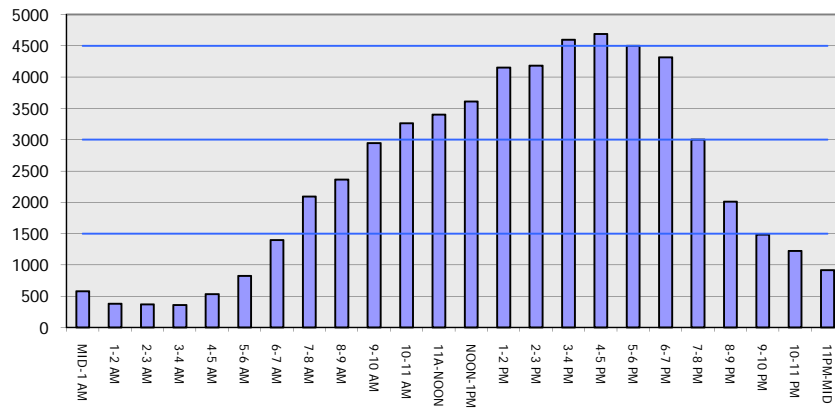
**IH 94: STH 35 N TO CARMICHAEL RD (ST CROIX COUNTY)
OFF-PEAK CLOSURE
DIVERSION ROUTE: STH 35 - COULEE RD - CARMICHAEL RD**

MAY
Analyzed for 2009
Construction Season

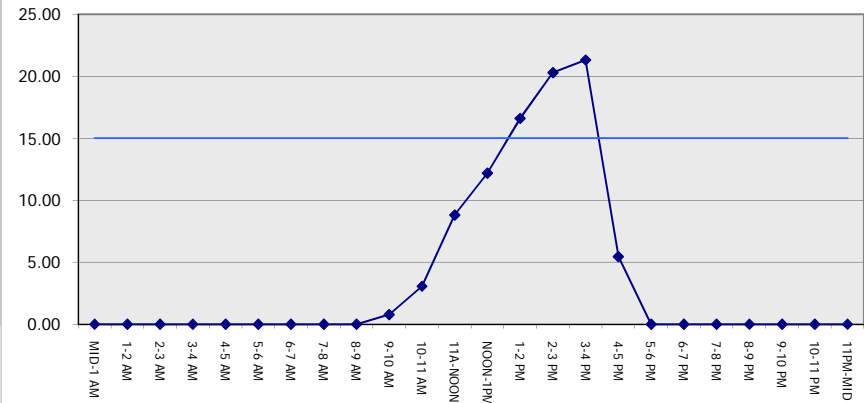
GRAPHICAL REPRESENTATION OF TRAFFIC MODEL INPUT AND OUTPUT

FRIDAY EASTBOUND DIRECTION

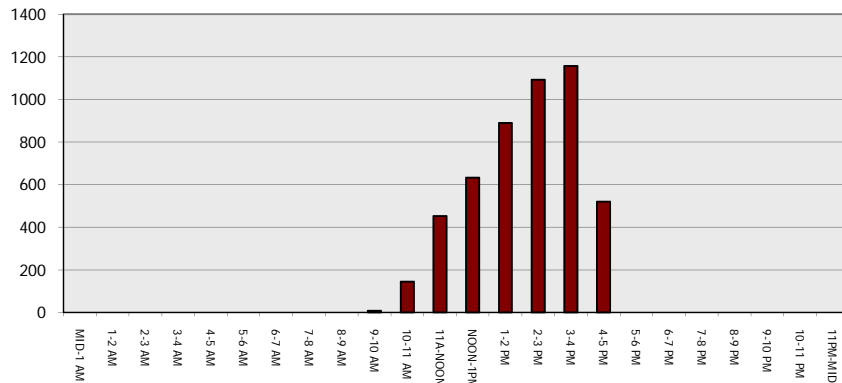
Main Route - Traffic Demand (Vehicles Per Hour)



Main Route Average Delay Per Vehicle (Minutes)



Main Route - Average Queue Length (Vehicles)



Main Route - Average Speed (MPH)

